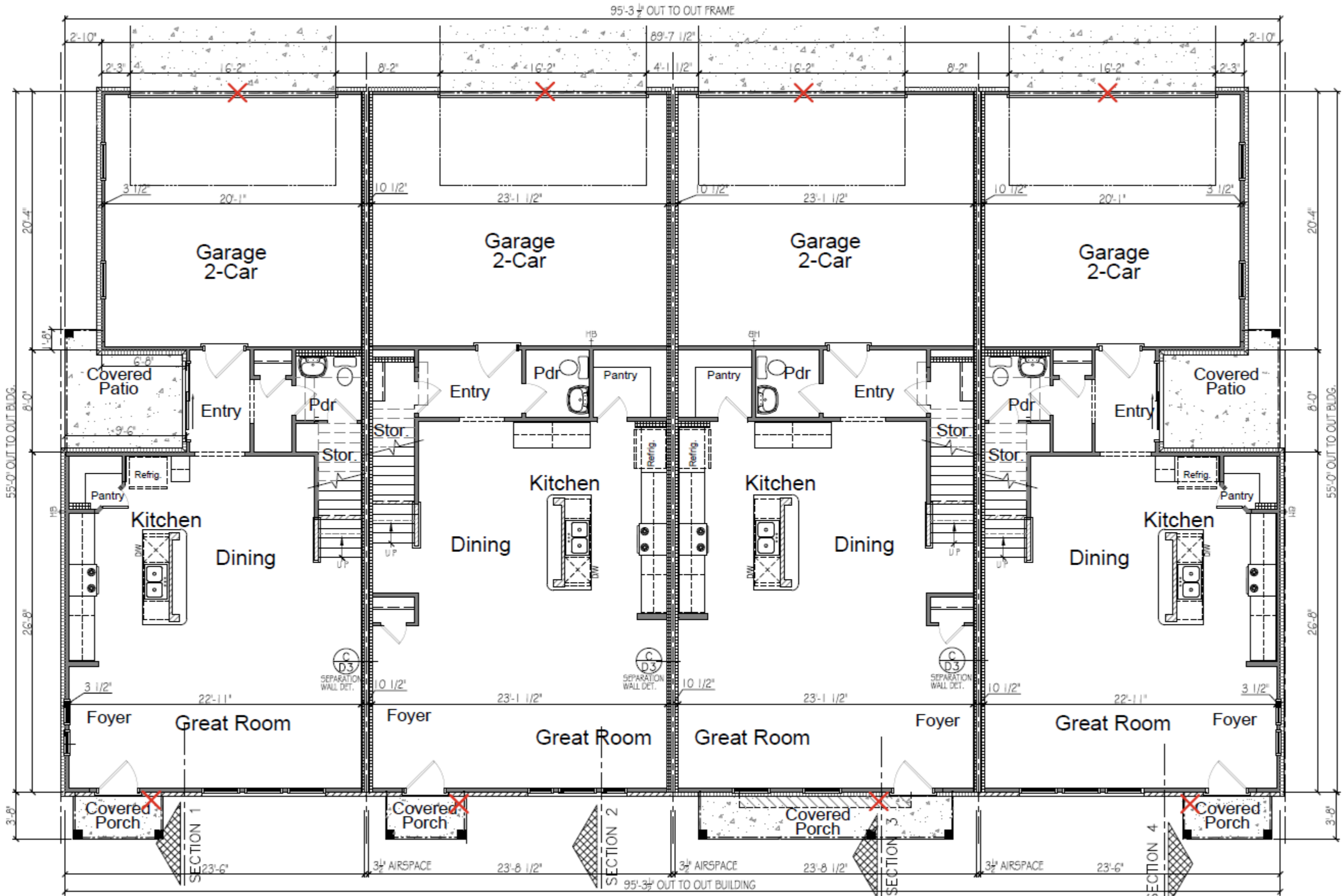


X = Exterior Photo Cell Coach Light Location



9' CEILING

AVON LEFT - LOT XXX ASPEN LEFT - LOT XXX ASPEN II RIGHT - LOT XXX AVON RIGHT - LOT XXX

FIRST FLOOR

SCALE: 1/8" = 1'-0"



COPYRIGHT 2025

LOT #: 000

HOBBS STATION TOWNHOMES

BUYER: SPEC.

MODEL # 4 UNIT

DATE: 3/11/25

DRAWN BY: JCB

SHEET NO.

3

VISUAL COMFORT & Co.

8638501EN3-12: Large One Light Outdoor Wall Lantern Dimensions:



Width: 13.0"
Height: 10.38"
Weight: 2.2 lbs.

Extends: 15.125'
Wire: 6.5" (color;Black/White)
Mounting Proc.: Cap Nuts
Connection: Mounted To Box
Watts: 9
Lumens: 800

Bulbs:

1 - LEDMedium A19 9.0w Max. 120v included

Features:

- ENERGY STAR® Qualified
- Dark Sky friendly. Designed to emit no light above the 90° horizontal plane. Photometry unavailable.
- LED Bulbs are an efficient, versatile and durable light source that deliver exceptional performance.
- Meets Title 24 energy efficiency standards
- Title 24 compliant when used with included Joint Appendix (JA8) approved lamp.

Material List:

1 Body - Aluminum - Black

Safety Listing:

Safety Listed for Wet Locations

Instruction Sheets:

English (8438501 8538501 8638501)
Trilingual (English, Spanish, and French) (8438501 8538501 8638501)
Trilingual (English, Spanish, and French) (990W8538501-CRI)

Collection: Crittenden

Featured in the decorative Crittenden collection

1 A19 Medium 9.3 watt light bulb

Fixture is supplied with 1 light bulb

ENERGY STAR® Qualified

Dark sky friendly. Designed to emit no light above the 90° horizontal plane. Photometry unavailable.

UPC #:785652083211

Finish: Black (12)

Backplate / Canopy Details:

Type	Height / Length	Width	Depth	Diameter	Outlet Box Up	Outlet Box Down
Back Plate			0.88	5.0	3.38	

Replacement Bulb Data:

Product #	Type	Base	Watts	Watts Consumed	Volts	Hours	Lumens	Temp (°K)	CRI
-----------	------	------	-------	----------------	-------	-------	--------	-----------	-----

Shipping Information:

Package Type	Product #	Quantity	UPC	Length	Width	Height	Cube	Weight	Fr. Class	UPS Ship
Individual	8638501-12	1	785652083211	17.25	16.0	13.25	2.12	4.3	0	Yes
Master Pack	8638501EN3-12	0	10785652083218							No
NJ Pallet		32		48.0	40.0	75.0	83.33	137.6		No
NV Pallet		32		48.0	40.0	75.0	83.33	137.6		No

