

# **VILLAGE** AT PLANK ROAD

**PLANNED UNIT DEVELOPMENT REVIEW**

10.10.2025

**BCG**



# VILLAGE AT PLANK ROAD



FRONT CORNER PERSPECTIVE | BUILDING 1

# VILLAGE AT PLANK ROAD

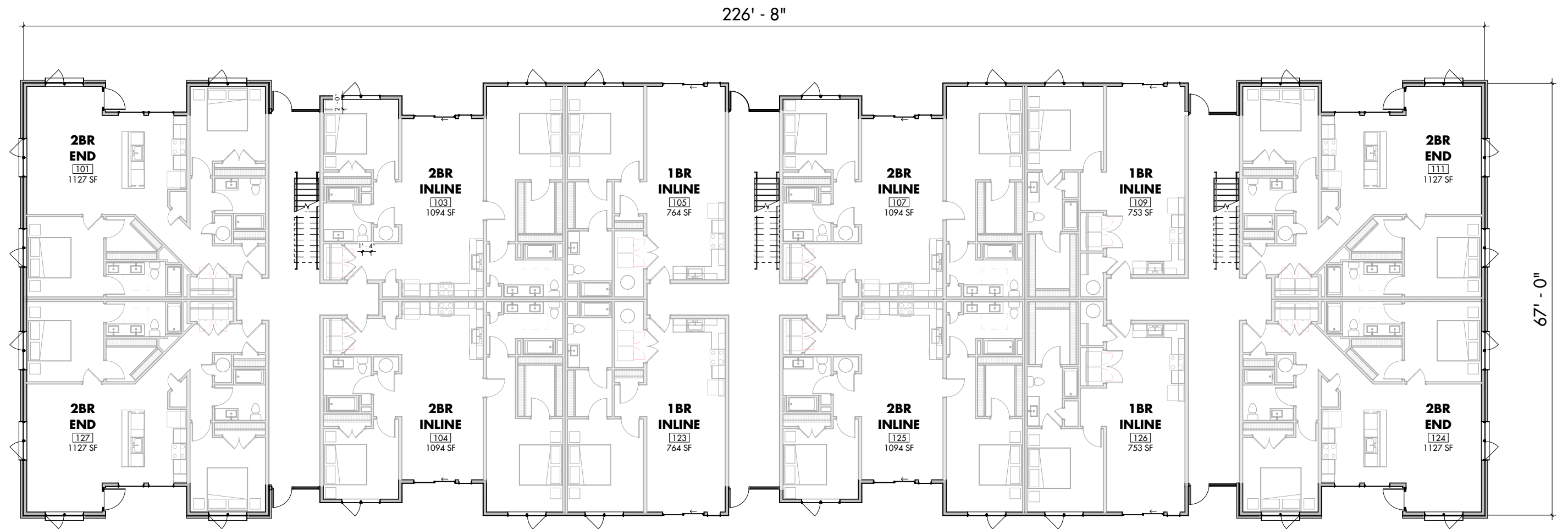


**FRONT CORNER** PERSPECTIVE | BUILDING 2

# VILLAGE AT PLANK ROAD



FRONT CORNER PERSPECTIVE | AMENITY BUILDING



## MATERIALS PER FACADE:

BRICK	65%
WINDOWS/GLAZING:	19%
FIBER CEMENT:	16%
LAP (TAN)	1.6%
LAP (BLACK)	0%
PANEL:	0%
BOARD AND BATTEN:	0%
SHAKES:	0%



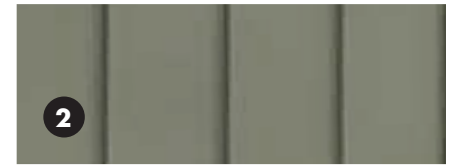
LEFT ELEVATION (RIGHT SIMILAR)

## MATERIAL PALETTE

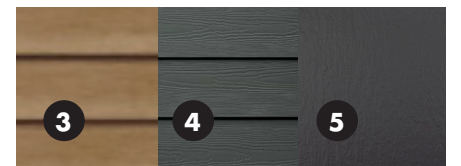
**BRICK - LIGHT**  
MANUF. TBD.



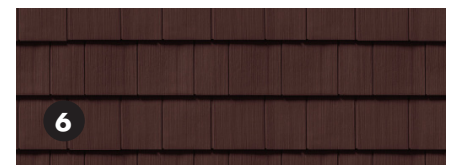
**FIBER CEMENT BOARD + BATTEN**  
HARDIE PANEL AS B.O.D.  
1'-0" TO 1'-6" WIDE PANELS WITH 1x FIBER CEMENT BATTEN STRIPS - PAINTED



**FIBER CEMENT SIDING**  
HARDIE PLANKS/PANEL AS B.O.D.  
PRE-FINISHED STAIN, CEDAR APPEARANCE OR SMOOTH FACE WITH BLACK PAINT WITH 6" EXPOSURE



**FIBER CEMENT SHAKES**  
HARDIE SHINGLE AS B.O.D.  
PAINTED FINISH

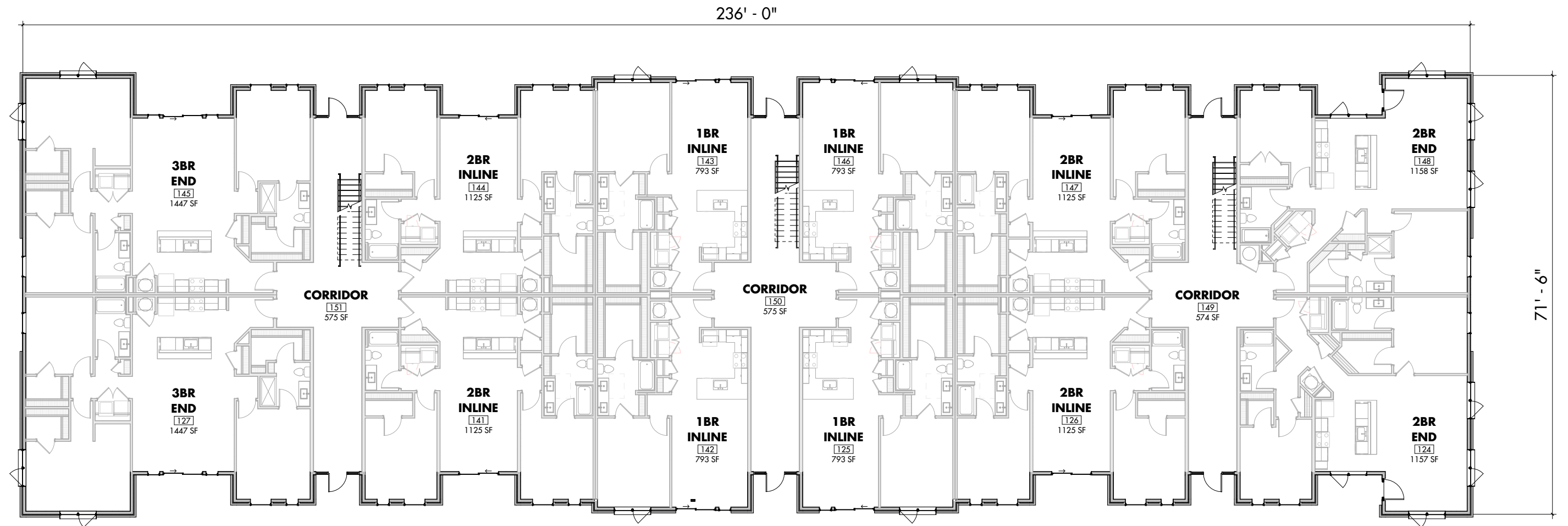


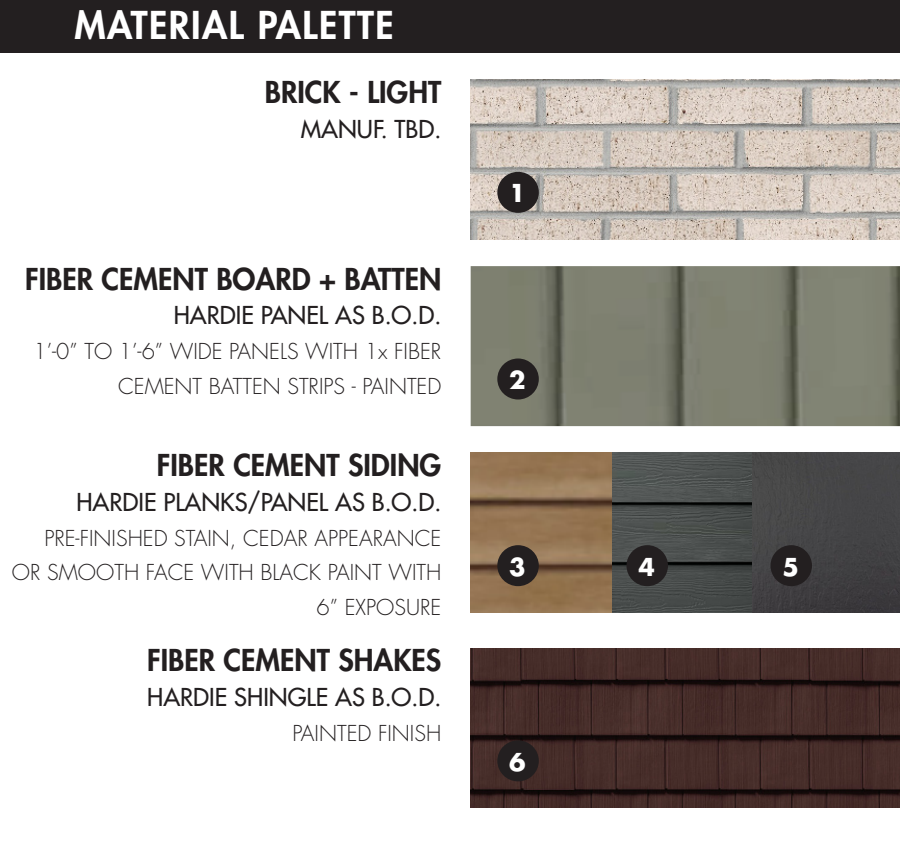
## MATERIALS PER FACADE:

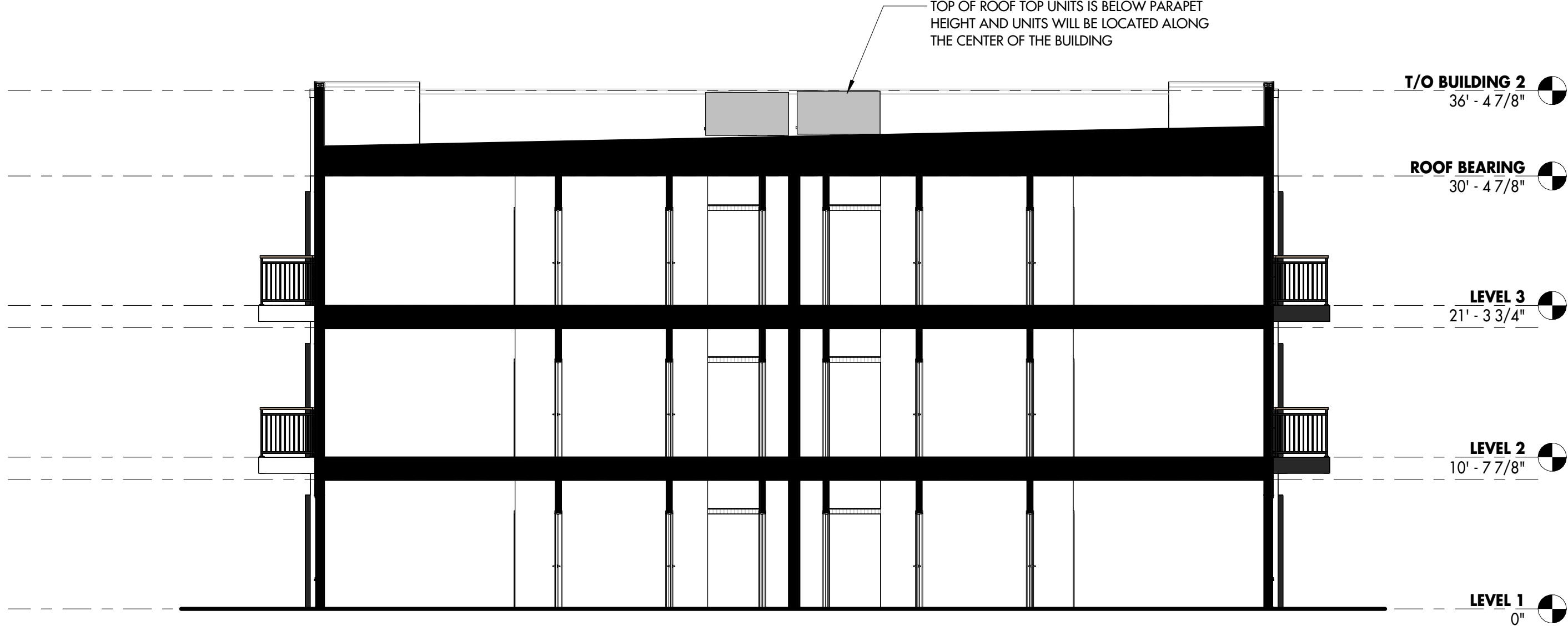
BRICK	20%
WINDOWS/GLAZING:	36%
FIBER CEMENT:	44%
LAP (TAN)	10%
LAP (BLACK)	5%
PANEL:	6%
BOARD AND BATTEN:	1.5%
SHAKES:	8%

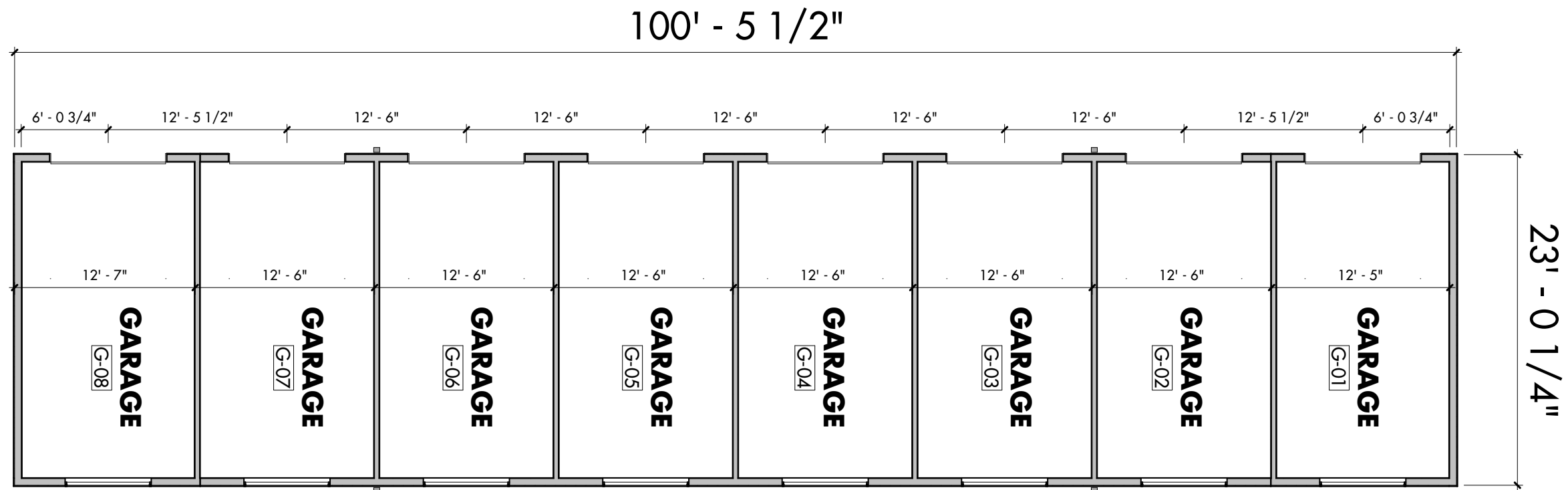


FRONT ELEVATION (BACK SIMILAR)



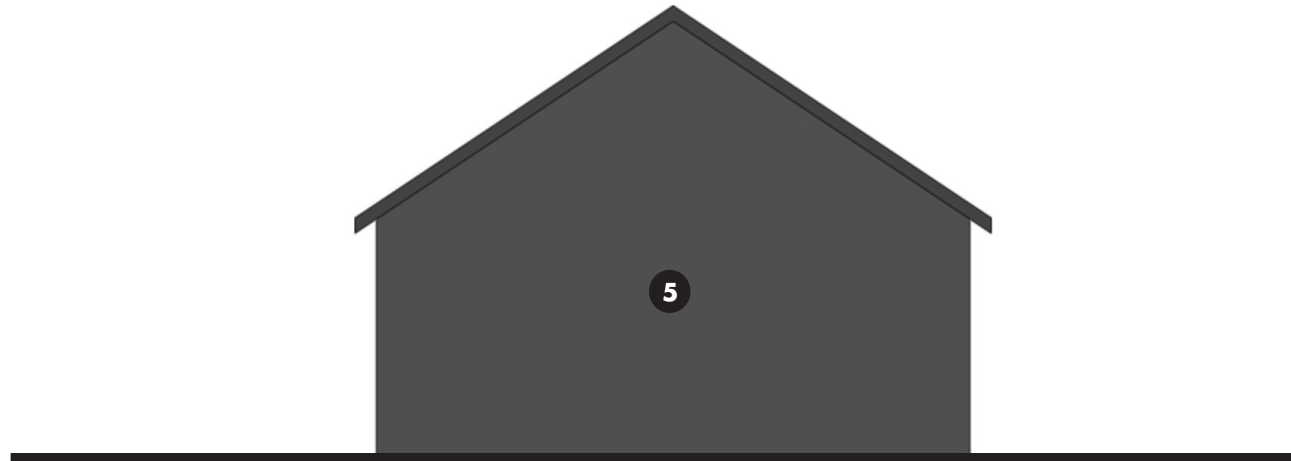






**MATERIALS PER FACADE:**

BRICK	0%
WINDOWS/GLAZING:	0%
FIBER CEMENT:	100%
LAP (TAN)	0%
LAP (BLACK)	0%
PANEL:	100%
BOARD AND BATTEN:	0%
SHAKES:	0%



**LEFT ELEVATION (RIGHT SIMILAR)**

**MATERIAL PALETTE**

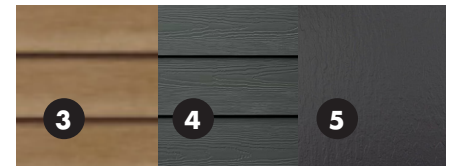
**BRICK - LIGHT**  
MANUF. TBD.



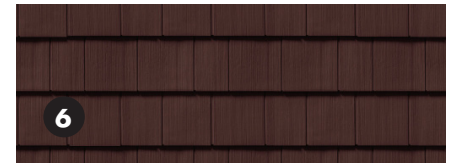
**FIBER CEMENT BOARD + BATTEN**  
HARDIE PANEL AS B.O.D.  
1'-0" TO 1'-6" WIDE PANELS WITH 1x FIBER  
CEMENT BATTEN STRIPS - PAINTED



**FIBER CEMENT SIDING**  
HARDIE PLANKS/PANEL AS B.O.D.  
PRE-FINISHED STAIN, CEDAR APPEARANCE  
OR SMOOTH FACE WITH BLACK PAINT WITH  
6" EXPOSURE

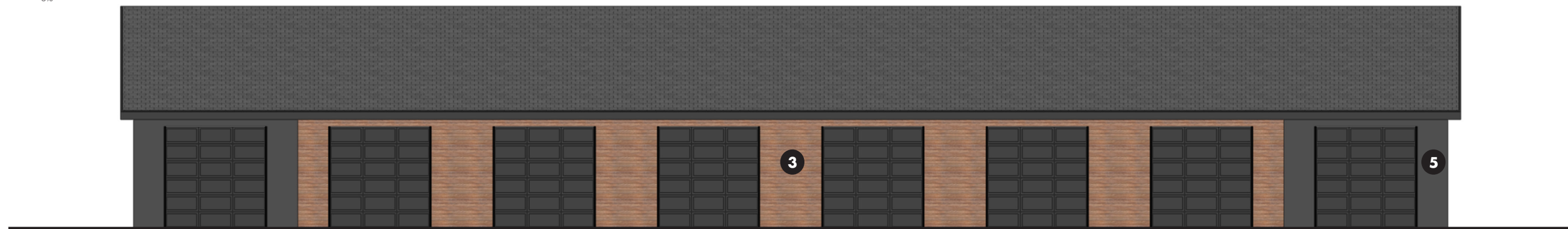


**FIBER CEMENT SHAKES**  
HARDIE SHINGLE AS B.O.D.  
PAINTED FINISH

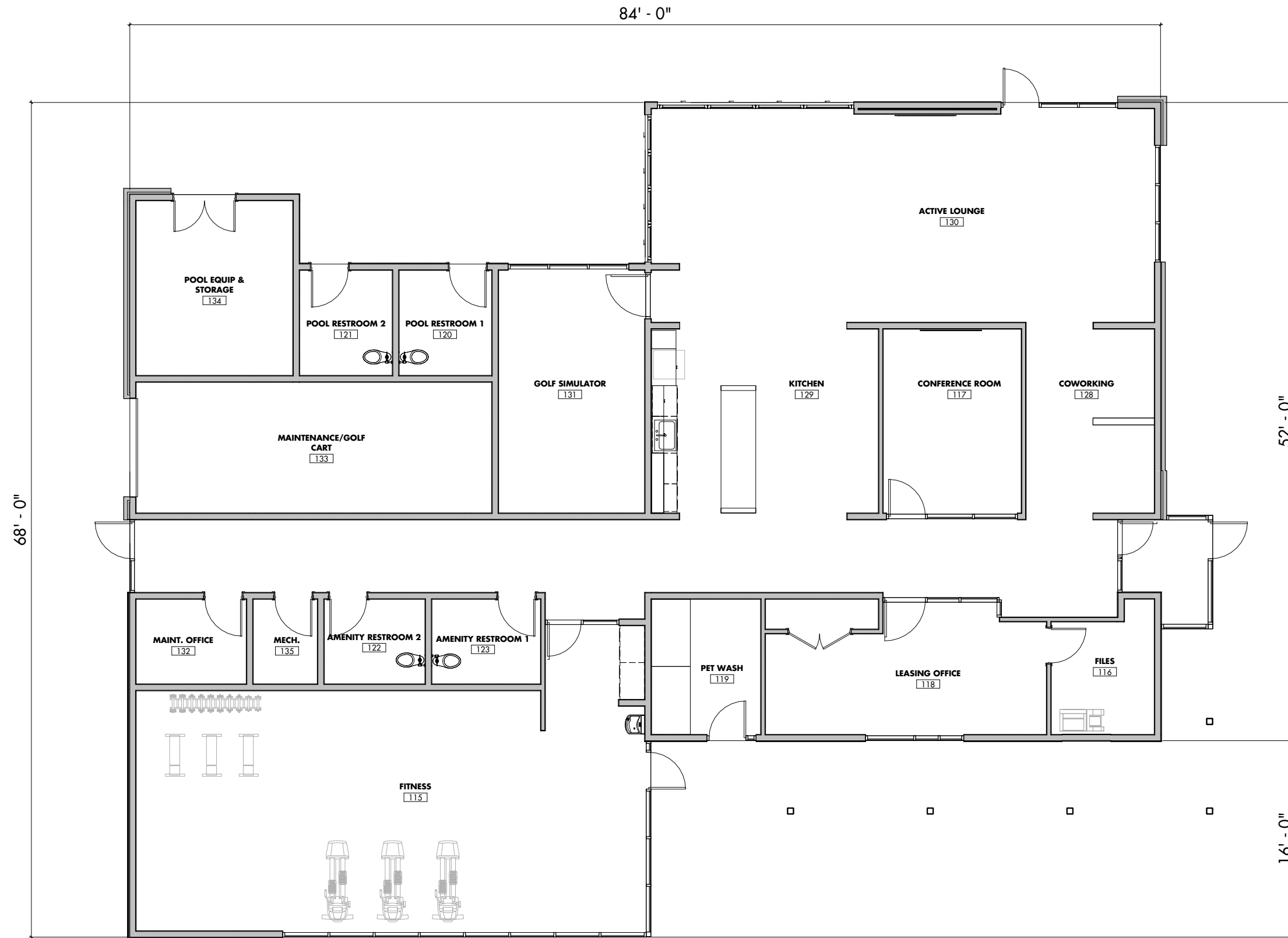


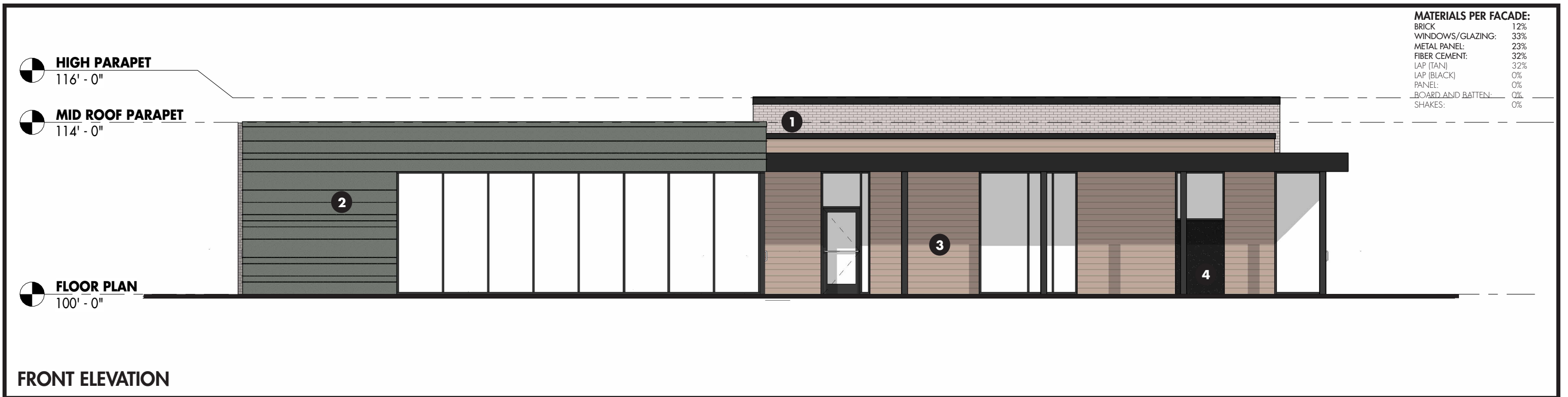
**MATERIALS PER FACADE:**

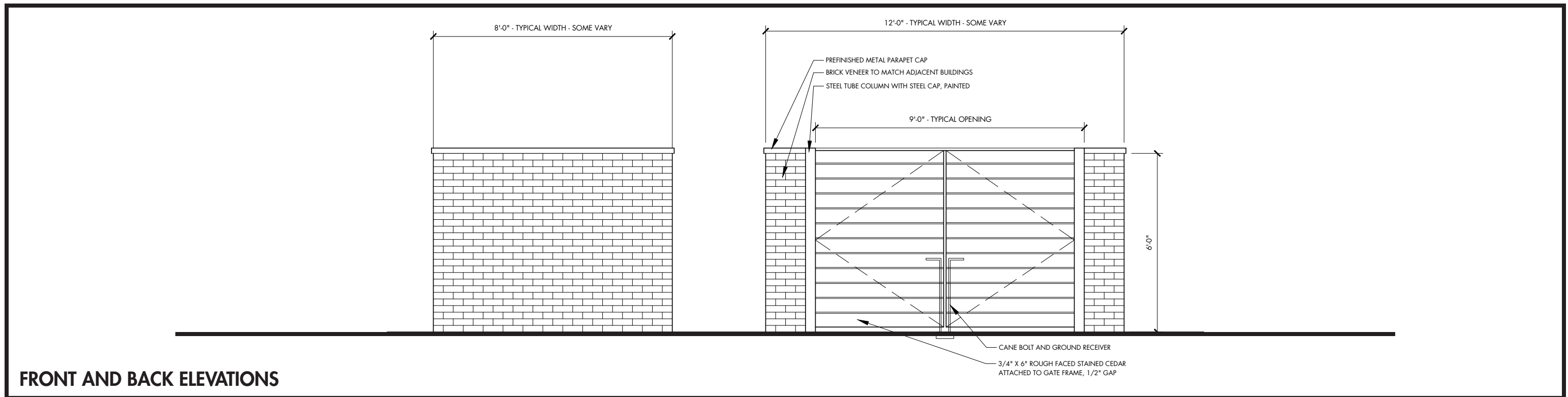
BRICK	0%
WINDOWS/GLAZING:	0%
FIBER CEMENT:	100%
LAP (TAN)	75%
LAP (BLACK)	0%
PANEL:	2.5%
BOARD AND BATTEN:	0%
SHAKES:	0%



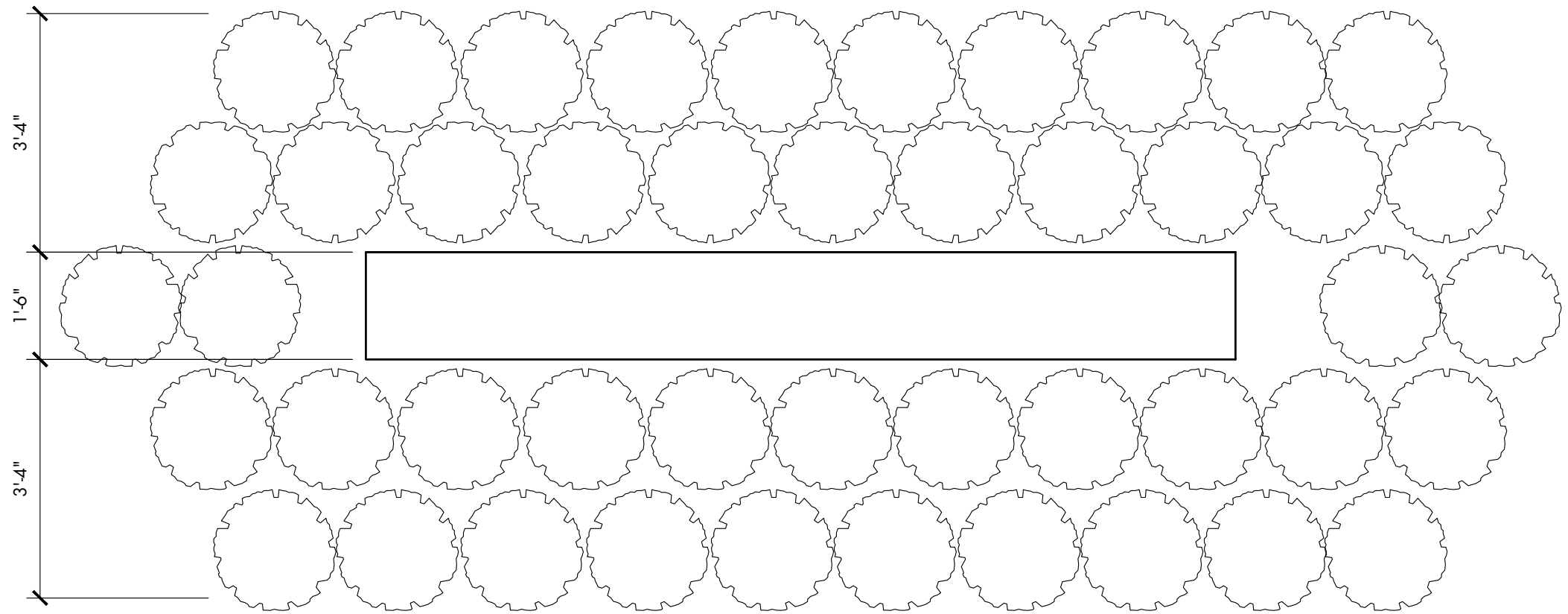
**FRONT ELEVATION (BACK SIMILAR)**





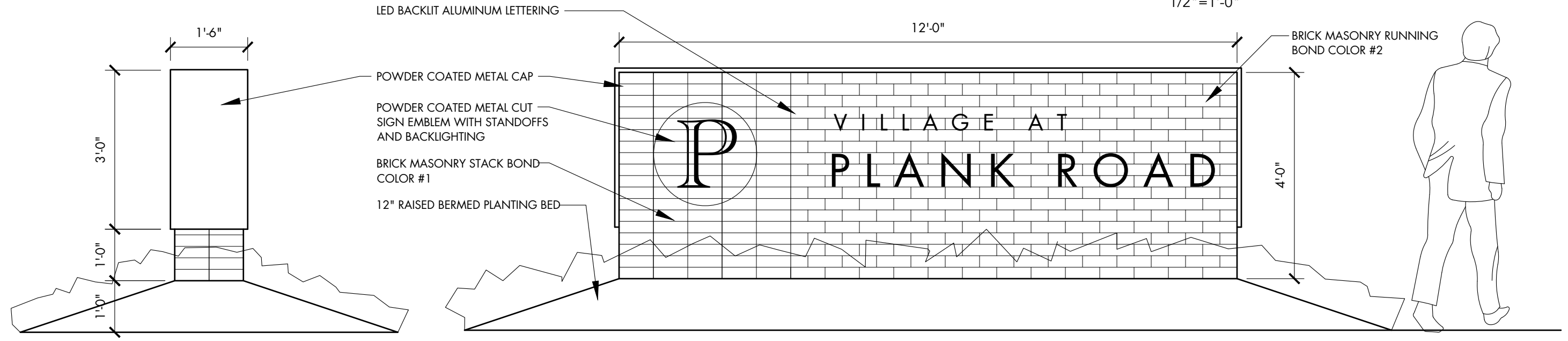


NOTE:  
LOGO AND GRAPHICS SUBJECT TO  
CHANGE WITH FINAL NAMING  
AND BRAND DESIGN



GROUND SIGN PLAN

1/2" = 1'-0"



GROUND SIGN SIDE ELEVATION

1/2" = 1'-0"

GROUND SIGN ELEVATION

1/2" = 1'-0"

