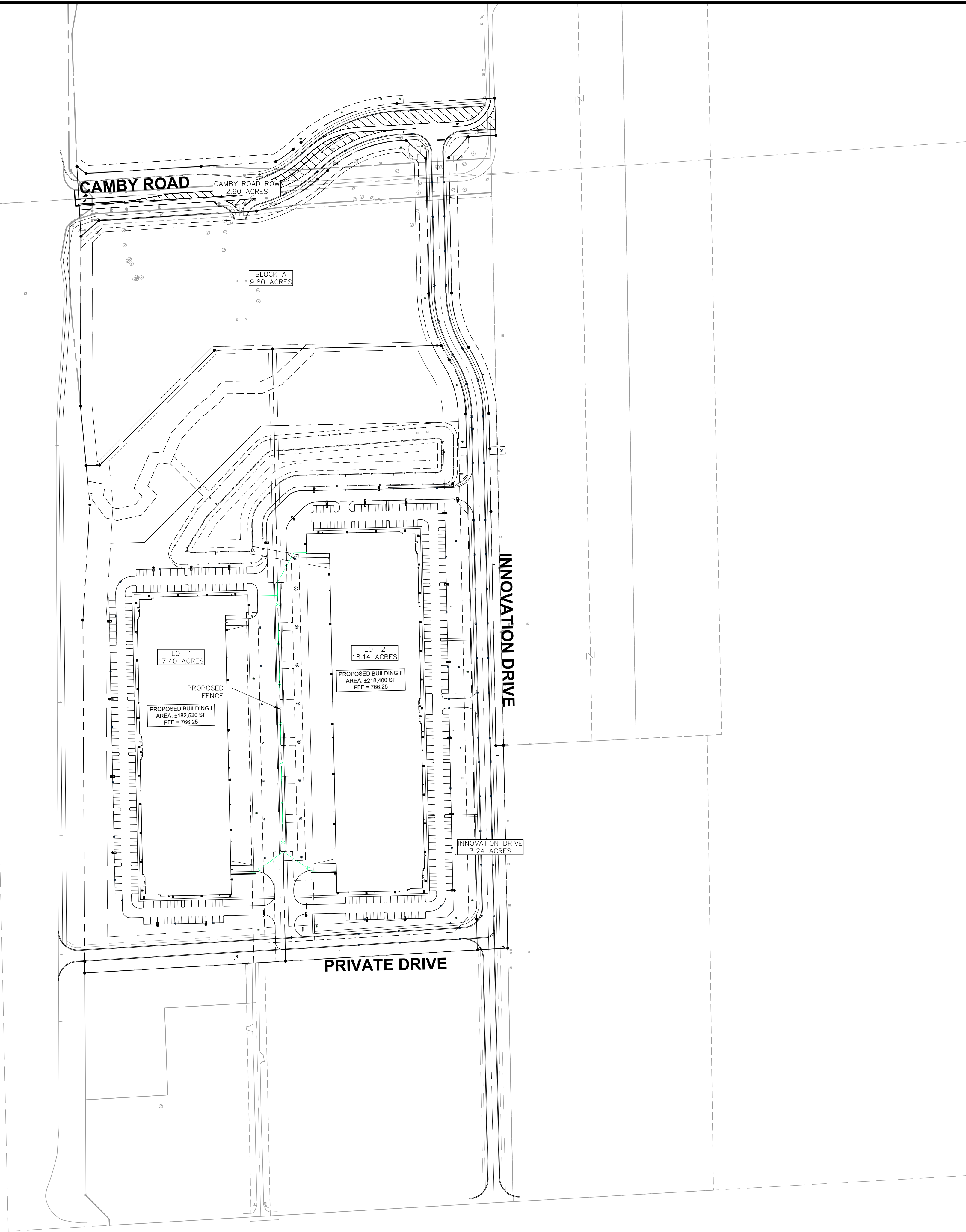
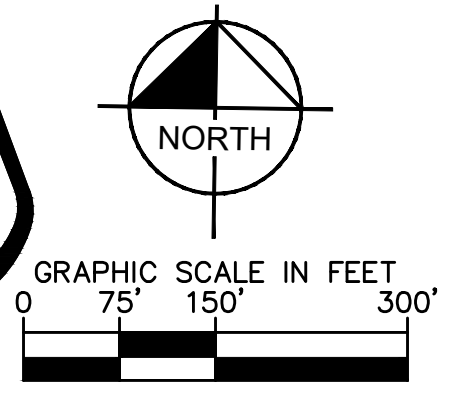


Drawing name: K:\IND\DEV\170008020_Ambrose\Rock-Creek\Plainfield\IN\2_Design\CADD\PlanSheets\Primary\Plan\Plainfield_Logistics_Park_East_Phase_1\70008020_Ambrose_PlanSheets\ProposedFence.kml_Rev_2024-0709.dwg C:\0 Jul 30, 2024 6:26pm by: collin.koski

This document, together with the concepts and designs presented herein, as an instrument of service, is intended only for the specific purpose and client for which it was prepared. Reuse of and improper reliance on this document without written authorization and adaptation by Kimley-Horn and Associates, Inc. shall be without liability to Kimley-Horn and Associates, Inc.



Indiana Utilities Protection Service
Call 811
before you dig



PLAINFIELD INNOVATION PARK PLAINFIELD, IN	PROPOSED FENCE PLAN	AMBROSE	 Bryan Steward Professional Engineer	SCALE: AS NOTED DESIGNED BY: CSM DRAWN BY: CAN CHECKED BY: BAS	Kimley»Horn ©2024 KIMLEY-HORN AND ASSOCIATES, INC. 500 EAST 96TH STREET, SUITE 300, INDIANAPOLIS, IN 46240 WWW.KIMLEY-HORN.COM	NO. _____ REVISIONS _____ DATE _____ BY _____
-------------------------------------------------	------------------------	----------------	--------------------------------------------	----------------------------------------------------------------------------	---------------------------------------------------------------------------------------------------------------------------------------------------	--------------------------------------------------------

ORIGINAL ISSUE:
06/20/2024
KHA PROJECT NO.
170008020
SHEET NUMBER
EX.1