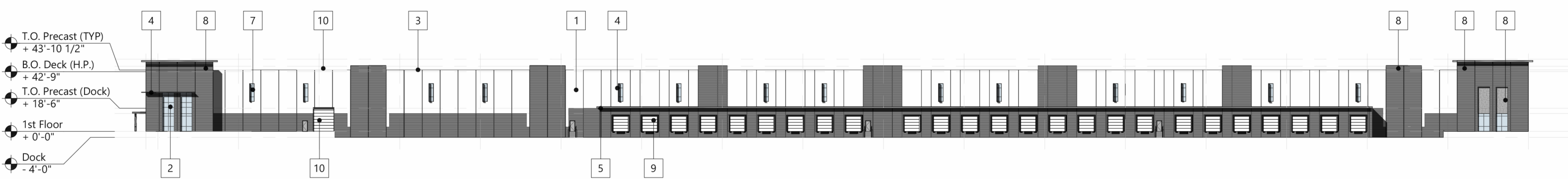


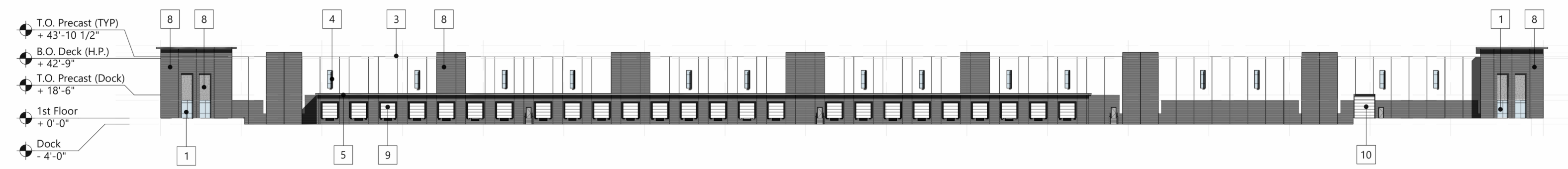
East Elevation



West Elevation



South Elevation



North Elevation

**MATERIALS KEY:**

- 1 1" Insulated Aluminum Storefront Glazing System (Vision)  
Color: Clear Anodized
- 2 1" Insulated Aluminum Curtainwall Glazing System  
Color: Clear Anodized
- 3 Aluminum Coping  
Color: Medium Grey
- 4 Prefinished Aluminum Sunshade  
Color: Clear Anodized
- 5 Aluminum Canopy  
Color: Light Grey
- 6 Prefinished Aluminum Column-Wrap  
Color: Clear Anodized
- 7 Precast Concrete Panel, Smooth, with Reveals, Painted  
Color: White, and Medium Grey
- 8 Precast Concrete Panel with Ribbed/Patterned Formliner,  
Color: Medium Grey
- 9 Dock Door with Bumper
- 10 Drive-In Door

**FACADE POINT VALUE SYSTEM:**

PRIMARY FACE	450 TO PASS	%	Mult.	Value
<b>EAST (EXPANSION SIDE):</b>				
Painted Precast		55.45%	A(x2)	= 110.9
Painted Precast w/ Formliner		42.66%	P(x8)	= 341.3
Windows/Storefront		1.38%	P(x8)	= 11.0
Architectural Metal/ACM		0.00%	P(x8)	= 0.0
Misc. (Not Counted)		0.51%	D(x0)	= 0.0
<b>Total</b>		<b>100.00%</b>		<b>= 463.2</b>
<b>WEST (MAIN ENTRY):</b>				
Painted Precast		31.37%	A(x2)	= 62.7
Painted Precast w/ Formliner		50.72%	P(x8)	= 405.8
Windows/Storefront		16.23%	P(x8)	= 129.9
Architectural Metal/ACM		1.05%	P(x8)	= 8.4
Misc. (Not Counted)		0.63%	D(x0)	= 0.0
<b>Total</b>		<b>100.00%</b>		<b>= 606.8</b>
<b>SOUTH (DOCK):</b>				
Painted Precast		42.60%	A(x2)	= 85.2
Painted Precast w/ Formliner		46.02%	P(x8)	= 368.1
Windows/Storefront		2.71%	P(x8)	= 21.7
Architectural Metal/ACM		0.29%	P(x8)	= 2.4
Misc. (Not Counted)		8.38%	D(x0)	= 0.0
<b>Total</b>		<b>100.00%</b>		<b>= 477.4</b>
<b>NORTH (DOCK):</b>				
Painted Precast		42.60%	A(x2)	= 85.2
Painted Precast w/ Formliner		46.02%	P(x8)	= 368.1
Windows/Storefront		2.71%	P(x8)	= 21.7
Architectural Metal/ACM		0.07%	P(x8)	= 0.5
Misc. (Not Counted)		8.61%	D(x0)	= 0.0
<b>Total</b>		<b>100.00%</b>		<b>= 475.5</b>

Exterior Elevations

