






Entry Monument Variance Request
Pulte Westlyn - Plainfield, IN
November 21, 2025



 Indicates PZO Section 7.5.B Sign Location Variance Request

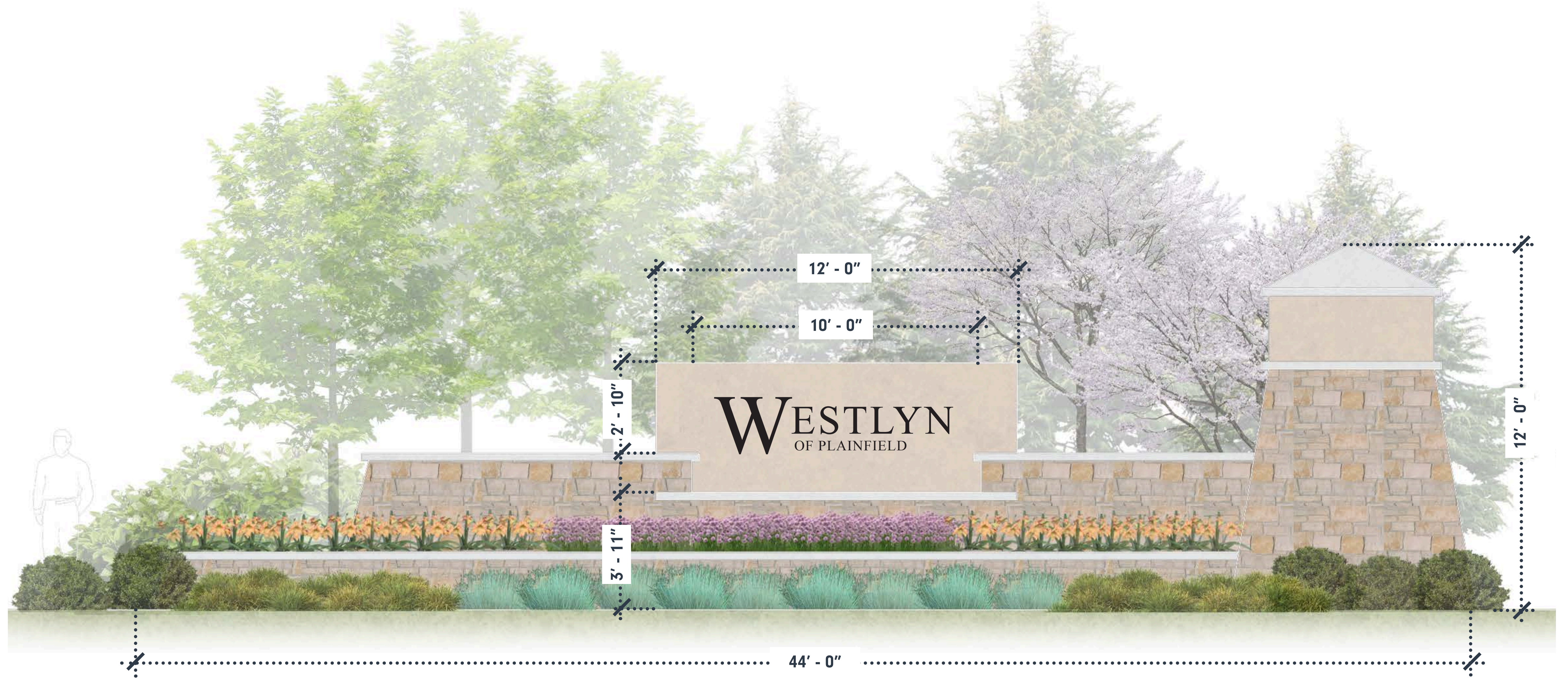
VARIANCE REQUEST SUMMARY



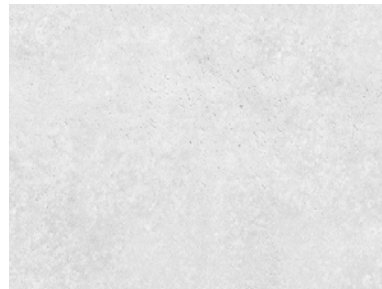
| Signage Type | Standard Sign Base | Requested Sign Base | Standard Sign Height | Requested Sign Height | Standard Sign Surface Area | Requested Sign Surface Area |
|---|-----------------------|---------------------|-----------------------|-----------------------|----------------------------|-----------------------------|
|  North Monument (Qty: 1) | 2' - 0" Max Height | 3' - 11" Height* | 6' - 0" Max Height | 12' - 0" Height* | 48 Square Feet | 46 Square Feet |
|  South Monument (Qty: 1) | 2' - 0" Max Height | 3' - 11" Height* | 6' - 0" Max Height | 10' - 0" Height* | 48 Square Feet | 46 Square Feet |
|  Westlyn Entry Column (Qty: 8) | 2' - 0" Max Height | 0' - 0" Height | 6' - 0" Max Height | 6' - 0" Height | 48 Square Feet | 4 Square Feet |
|  Enclave Entry Column (Qty: 2) | 2' - 0" Max Height | 0' - 0" Height | 6' - 0" Max Height | 6' - 0" Height | 48 Square Feet | 4 Square Feet |
|  Blank Column (No Sign) | N/A | N/A | N/A | N/A | N/A | N/A |

* Indicates PZO Section 7.5.A.1 Sign Height & Base Variance Request



| Legend | |
|--|-------------------------------|
| ● | North Entry Monument (Qty: 1) |
| ● | South Entry Monument (Qty: 1) |
| ● | Westlyn Entry Column (Qty: 8) |
| ● | Encalve Entry Column (Qty: 2) |
| | Blank Column (Qty: 10) |

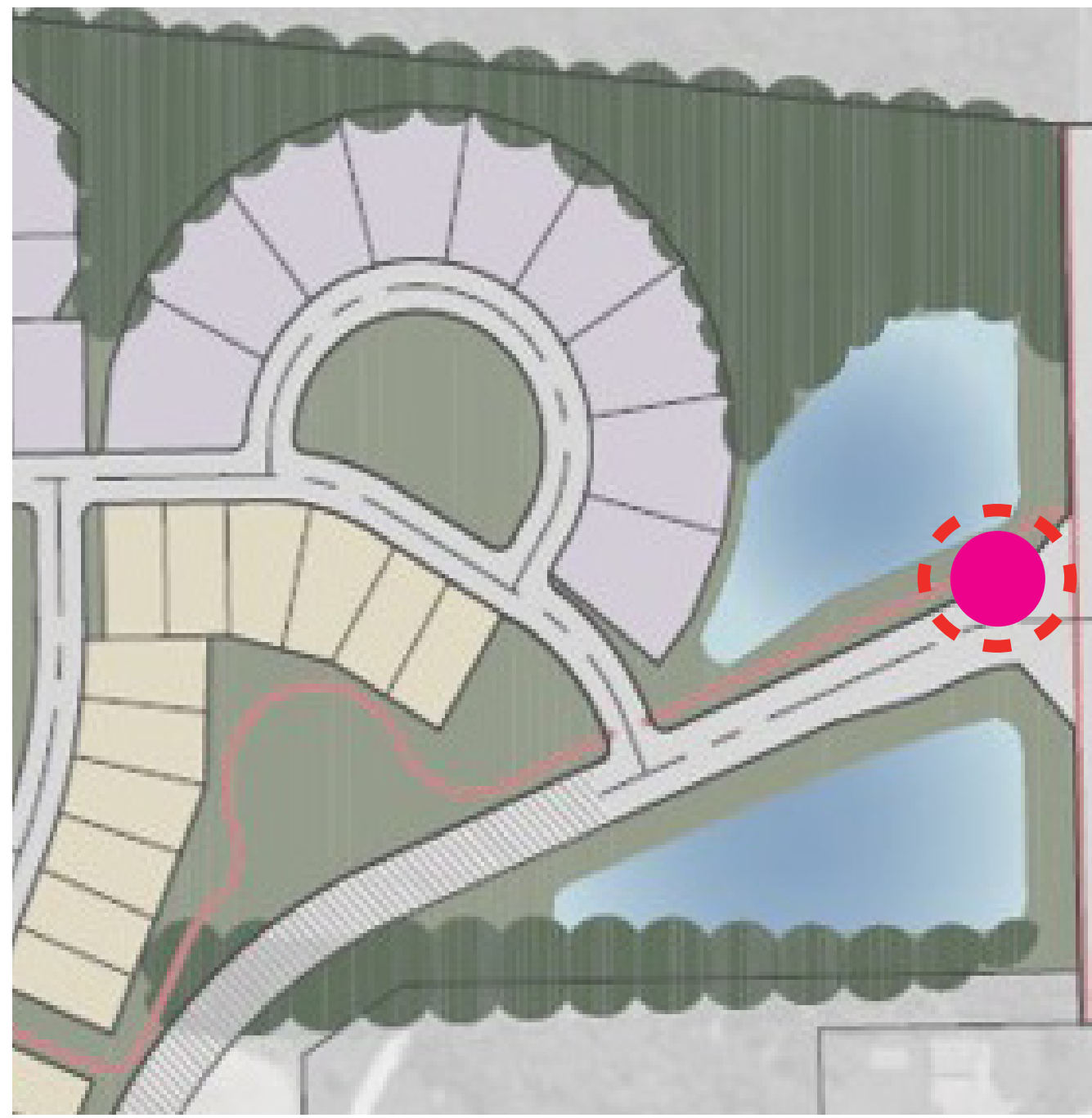


| MATERIALS | | |
|---|--|---|
| Sign: Stucco Finish / EIFS | Wall: Stone Veneer | Wall Cap: Concrete |
|  |  |  |

| NORTH ENTRY MONUMENT SUMMARY | | | |
|------------------------------|--------------------|--------------------|-------------------|
| | Sign Base | Sign Height | Sign Surface Area |
| Ordinance Requirements | 2' - 0" Max Height | 6' - 0" Max Height | 48 Square Feet |
| Proposed Monument Design | 3' - 11" Height* | 12' - 0" Height* | 46 Square Feet |

* PZO Section 7.5.A.1 Sign Height & Base Variance Request

 PZO Section 7.5.B Sign Location Variance Request



| Legend | |
|--|-------------------------------|
| ● | North Entry Monument (Qty: 1) |
| ● | South Entry Monument (Qty: 1) |
| ● | Westlyn Entry Column (Qty: 8) |
| ● | Encalve Entry Column (Qty: 2) |
| ○ | Blank Column (Qty: 10) |



| MATERIALS | | |
|-------------------------------|-----------------------|-----------------------|
| Sign: Stucco Finish / EIFS | Wall: Stone Veneer | Wall Cap: Concrete |
| | | |

| SOUTH ENTRY MONUMENT SUMMARY | | | |
|------------------------------|--------------------|--------------------|-------------------|
| | Sign Base | Sign Height | Sign Surface Area |
| Ordinance Requirements | 2' - 0" Max Height | 6' - 0" Max Height | 48 Square Feet |
| Proposed Monument Design | 3' - 11" Height* | 10' - 0" Height* | 46 Square Feet |

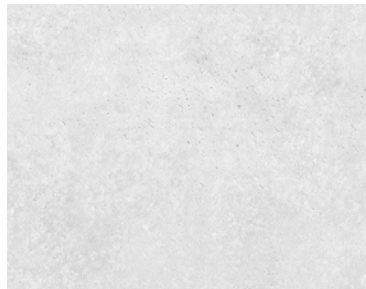
* PZO Section 7.5.A.1 Sign Height & Base Variance Request

PZO Section 7.5.B Sign Location Variance Request



| Legend | |
|--|-------------------------------|
| ● | North Entry Monument (Qty: 1) |
| ● | South Entry Monument (Qty: 1) |
| ● | Westlyn Entry Column (Qty: 8) |
| ● | Encalve Entry Column (Qty: 2) |
| | Blank Column (Qty: 10) |



| MATERIALS | | |
|---|---|---|
| Sign: Stucco Finish / EIFS | Wall: Stone Veneer | Wall Cap: Concrete |
|  |  |  |



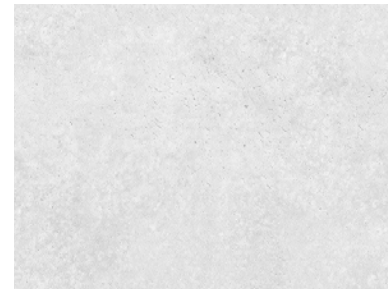
| WESTLYN ENTRY COLUMN SUMMARY | | | |
|------------------------------|--------------------|--------------------|-------------------|
| | Sign Base | Sign Height | Sign Surface Area |
| Ordinance Requirements | 2' - 0" Max Height | 6' - 0" Max Height | 48 Square Feet |
| Proposed Entry Column Design | 0' - 0" Height | 6' - 0" Height | 4 Square Feet |

No Variance needed. U.S. 40 entrance will have Signs on both right and left columns.



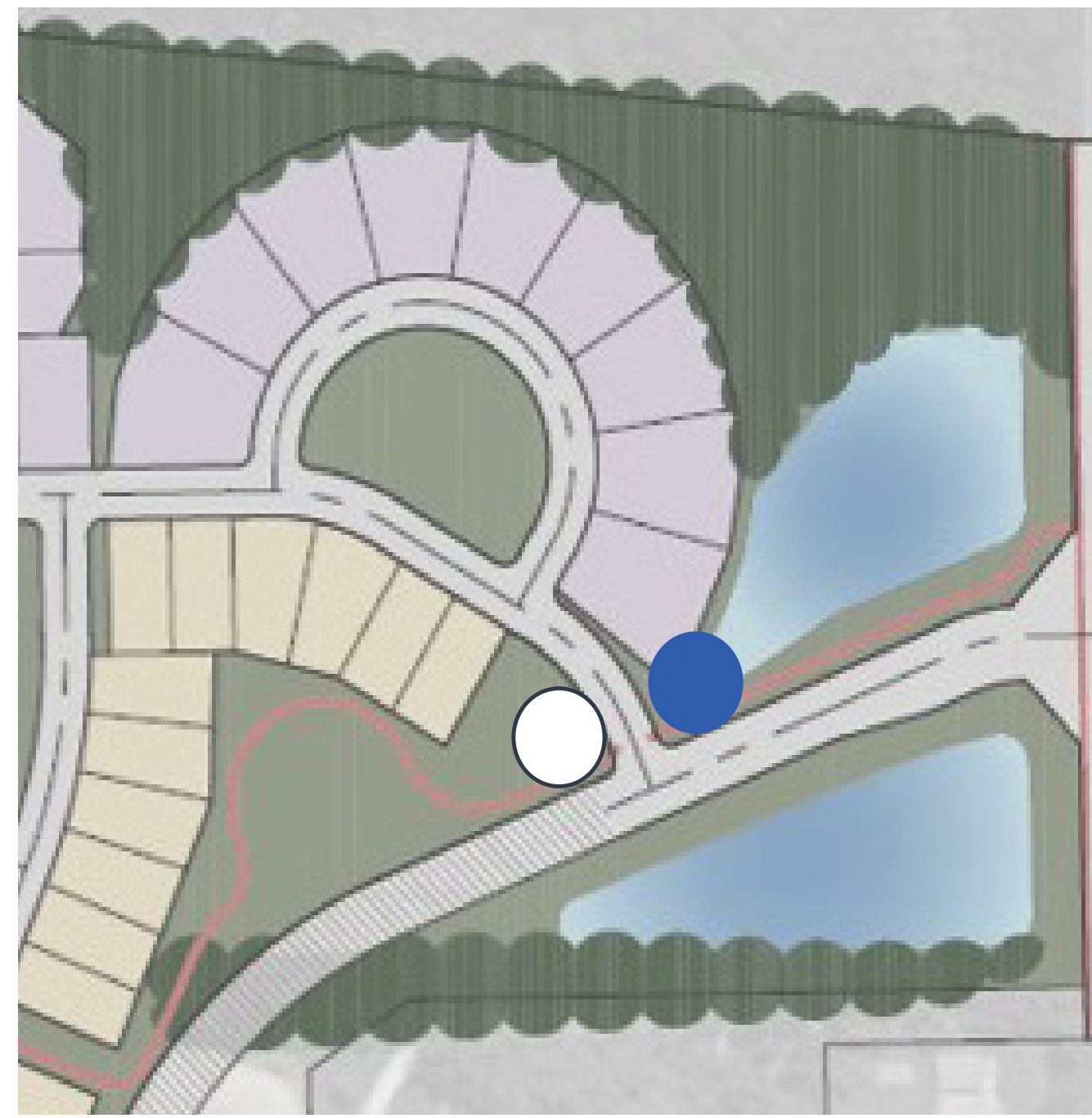
| Legend | |
|--|-------------------------------|
| ● | North Entry Monument (Qty: 1) |
| ● | South Entry Monument (Qty: 1) |
| ● | Westlyn Entry Column (Qty: 8) |
| ● | Encalve Entry Column (Qty: 2) |
| | Blank Column (Qty: 10) |



| MATERIALS | | |
|---|---|---|
| Sign: Stucco Finish / EIFS | Wall: Stone Veneer | Wall Cap: Concrete |
|  |  |  |



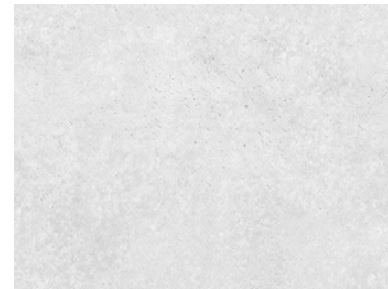
| WESTLYN ENTRY COLUMN SUMMARY | | | |
|------------------------------|--------------------|--------------------|-------------------|
| | Sign Base | Sign Height | Sign Surface Area |
| Ordinance Requirements | 2' - 0" Max Height | 6' - 0" Max Height | 48 Square Feet |
| Proposed Entry Column Design | 0' - 0" Height | 6' - 0" Height | 4 Square Feet |

No Variance needed. Sign on Right Column only.



| Legend | |
|--|-------------------------------|
| ● | North Entry Monument (Qty: 1) |
| ● | South Entry Monument (Qty: 1) |
| ● | Westlyn Entry Column (Qty: 8) |
| ● | Encalve Entry Column (Qty: 2) |
| | Blank Column (Qty: 10) |



| MATERIALS | | |
|---|---|---|
| Sign: Stucco Finish / EIFS | Wall: Stone Veneer | Wall Cap: Concrete |
|  |  |  |

| WESTLYN ENTRY COLUMN SUMMARY | | | |
|------------------------------|--------------------|--------------------|-------------------|
| | Sign Base | Sign Height | Sign Surface Area |
| Ordinance Requirements | 2' - 0" Max Height | 6' - 0" Max Height | 48 Square Feet |
| Proposed Entry Column Design | 0' - 0" Height | 6' - 0" Height | 4 Square Feet |

No Variance needed. Sign on Right Column only.



| Legend | |
|--|-------------------------------|
| ● | North Entry Monument (Qty: 1) |
| ● | South Entry Monument (Qty: 1) |
| ● | Westlyn Entry Column (Qty: 8) |
| ● | Encalve Entry Column (Qty: 2) |
| ○ | Blank Column (Qty: 10) |

| MATERIALS | | |
|---|---|---|
| Sign: Stucco Finish / EIFS | Wall: Stone Veneer | Wall Cap: Concrete |
|  |  |  |

| WESTLYN ENTRY COLUMN SUMMARY | | | |
|------------------------------|--------------------|--------------------|-------------------|
| | Sign Base | Sign Height | Sign Surface Area |
| Ordinance Requirements | 2' - 0" Max Height | 6' - 0" Max Height | 48 Square Feet |
| Proposed Entry Column Design | 0' - 0" Height | 6' - 0" Height | 4 Square Feet |

Sign on Right Column only.
⊗ PZO Section 7.5.B Sign Location Variance Request



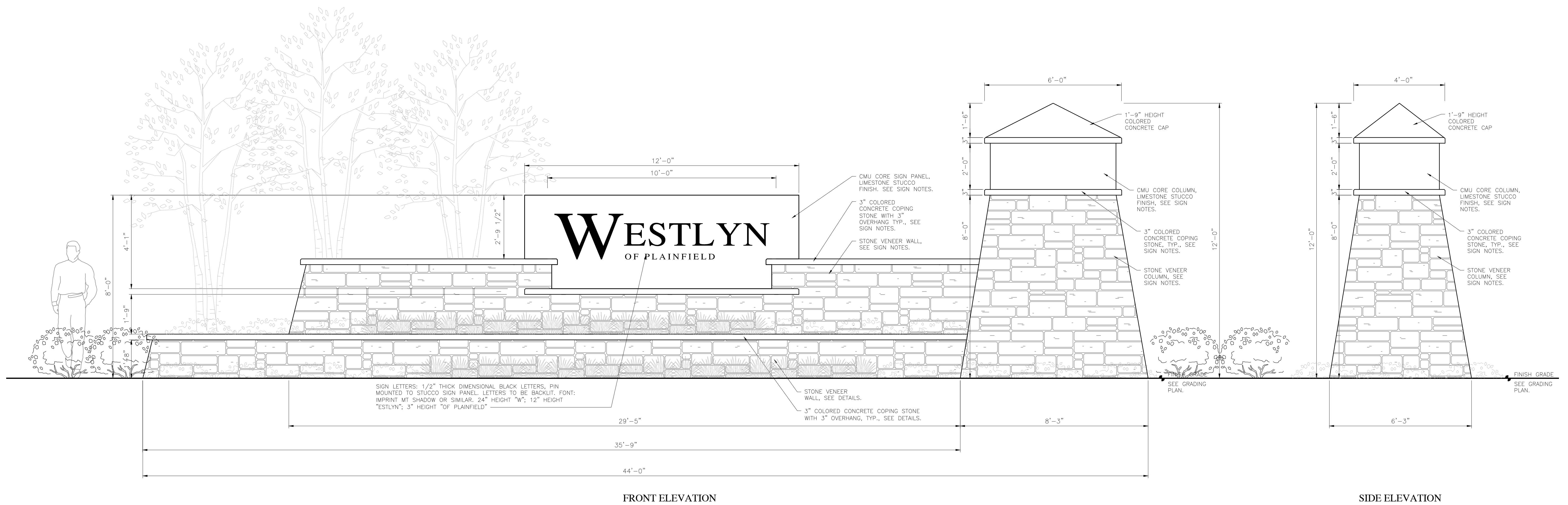
| Legend | |
|--|-------------------------------|
| ● | North Entry Monument (Qty: 1) |
| ● | South Entry Monument (Qty: 1) |
| ● | Westlyn Entry Column (Qty: 8) |
| ● | Enclave Entry Column (Qty: 2) |
| | Blank Column (Qty: 10) |

| MATERIALS | | |
|---|---|---|
| Sign: Stucco Finish / EIFS | Wall: Stone Veneer | Wall Cap: Concrete |
|  |  |  |

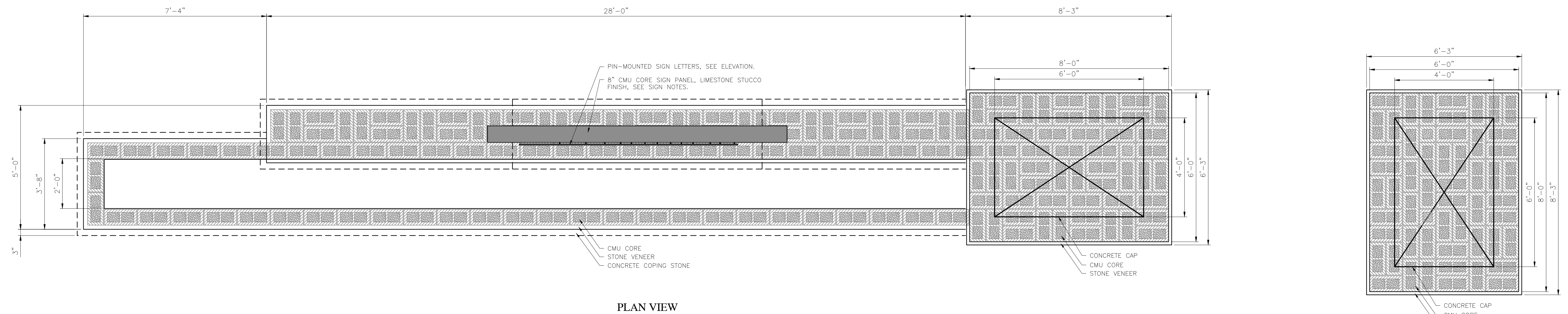
| THE ENCLAVE ENTRY COLUMN SUMMARY | | | |
|----------------------------------|--------------------|--------------------|-------------------|
| | Sign Base | Sign Height | Sign Surface Area |
| Ordinance Requirements | 2' - 0" Max Height | 6' - 0" Max Height | 48 Square Feet |
| Proposed Entry Column Design | 0' - 0" Height | 6' - 0" Height | 4 Square Feet |

Sign on Right Column only.

⊗ PZO Section 7.5.B Sign Location Variance Request



1 MAIN ENTRY SIGN WALL (NORTH ENTRANCE): ELEVATION
SCALE: 1/2" = 1'



2 MAIN ENTRY SIGN WALL (NORTH ENTRANCE): CMU FOUNDATION PLAN
SCALE: 1/2" = 1'

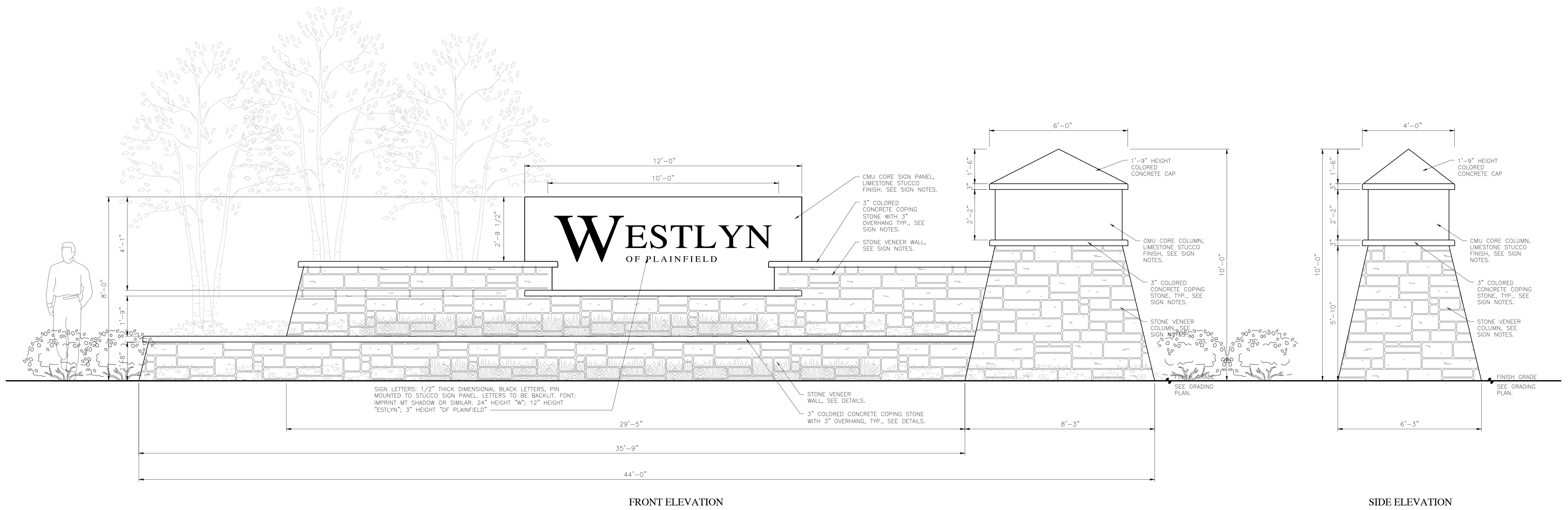
PULTE WESTLYN
NORTH ENTRY MONUMENT : U.S. 40 ENTRANCE

PLAINFIELD, IN

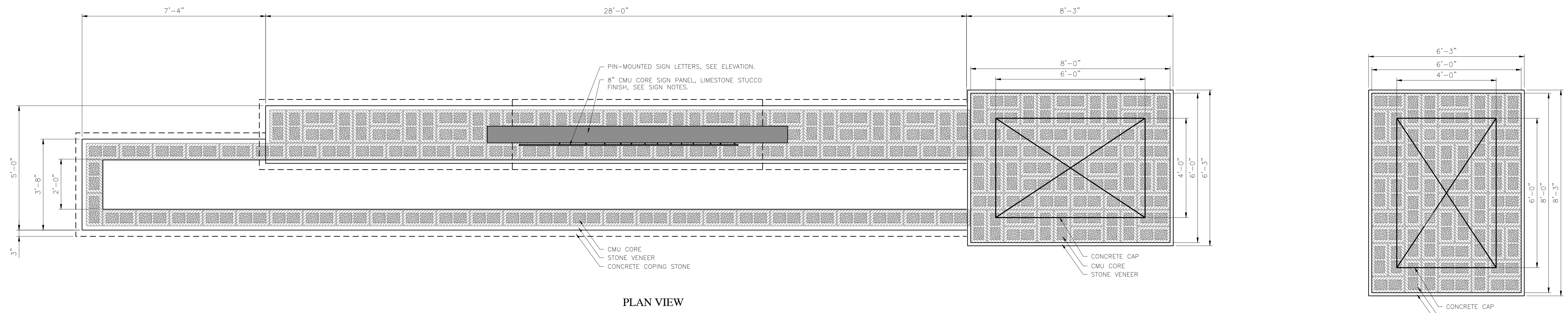


NOVEMBER 24, 2025

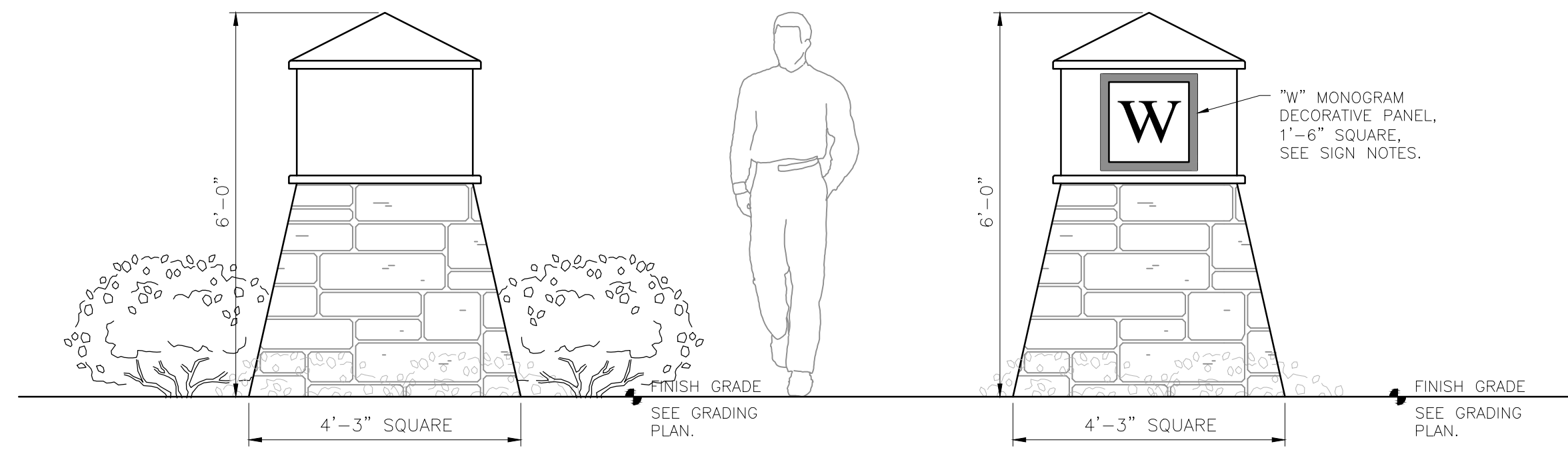




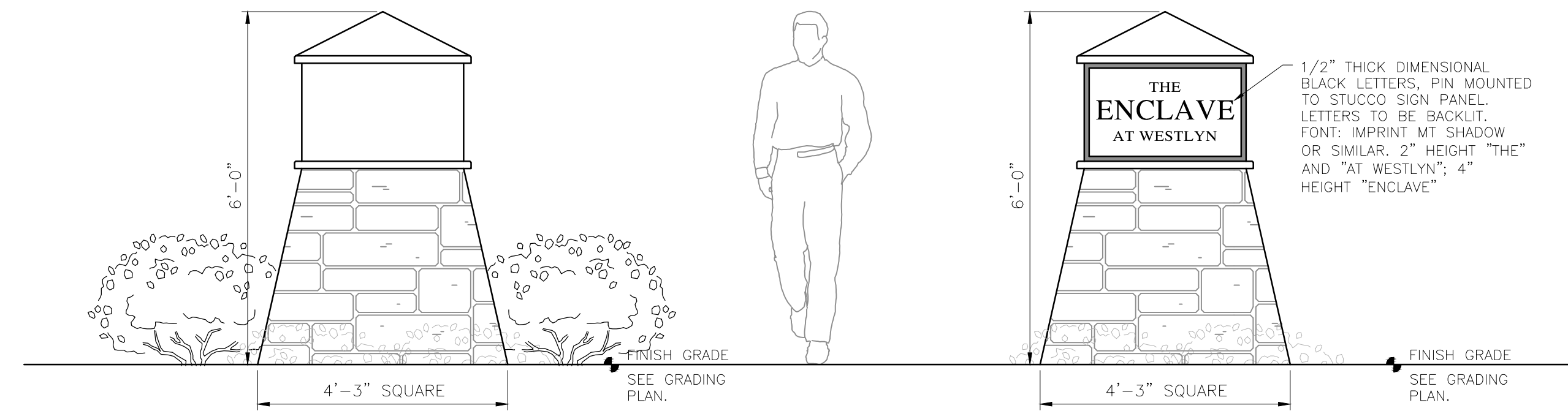
1 MAIN ENTRY SIGN WALL (SOUTH ENTRANCE): ELEVATION
SCALE: 1/2" = 1'



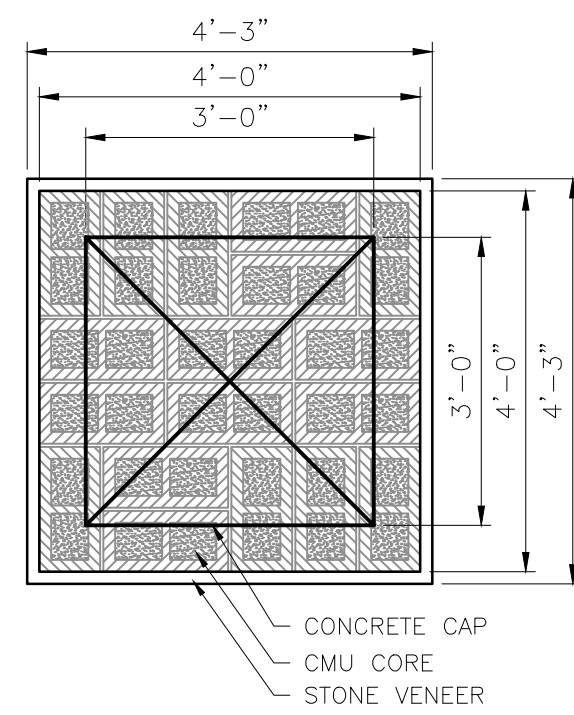
2 MAIN ENTRY SIGN WALL (SOUTH ENTRANCE): CMU FOUNDATION PLAN
SCALE: 1/2" = 1'



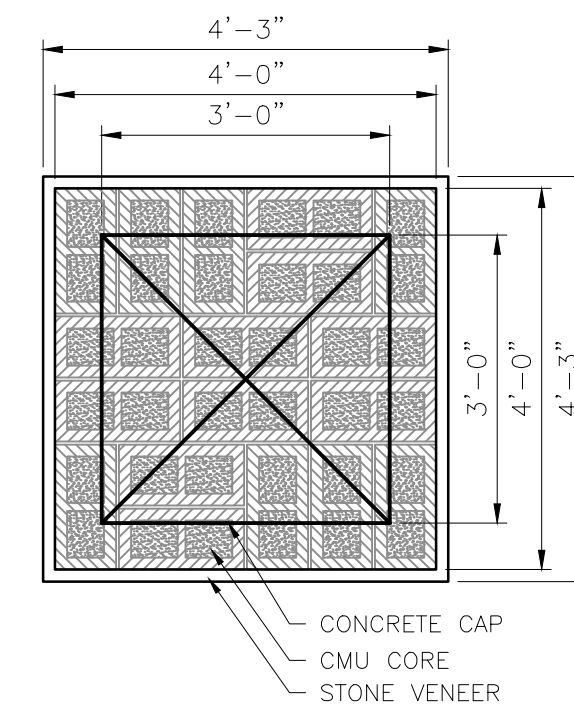
1 WESTLYN ENTRY COLUMN: ELEVATION (ALL SIDES)
SCALE: 1/2" = 1'



2 THE ENCLAVE AT WESTLYN ENTRY COLUMN: ELEVATION (ALL SIDES)
SCALE: 1/2" = 1'



3 WESTLYN ENTRY COLUMN: CMU FOUNDATION PLAN
SCALE: 1/2" = 1'



4 THE ENCLAVE AT WESTLYN ENTRY COLUMN: CMU FOUNDATION PLAN
SCALE: 1/2" = 1'