



COMPONENT DESIGN DRAWINGS & DETAILS

**Simpson Strong-Tie
Company, Inc.**

5956 W. Las Positas Blvd.
Pleasanton, CA 94588
(800) 999-5099
www.strongtie.com

Prepared for: Midwest Manufacturing - Eau Claire, WI
Project: QTREC0927061 - NEW JOB
Date: 3/26/2026 1:34 PM
Project Location: Project location has not been provided.
SST Project (TID): 309668

Notes:

1. The component design drawings referenced below have been prepared based on design criteria and requirements set forth in the Construction Documents, as communicated by the Component Manufacturer.
2. The engineer's signature on these drawings indicates professional engineering responsibility solely for the individual components to be able to resist the design loads indicated, utilizing all the design parameter and materials indicated or referenced on each individual design.
3. It is the Building Designer's responsibility to review the component design drawings to insure compatibility with the Building design. Refer to all notes on the individual component design drawings.

1 Component Design Drawing(s):

1-T1: SID 4155921

General Notes

- Each Truss Design Drawing (TDD) provided with this sheet has been prepared in conformance with ANSI/TPI 1. Refer to ANSI/TPI 1 Chapter 2 for the responsibilities of all parties involved, which include but are not limited to the responsibilities listed on this sheet, and for the definitions of all capitalized terms referenced in this document.
- TDDs should not be assumed to be to scale.
- The Contractor and Building Designer shall review and approve the Truss Submittal Package.
- The suitability and use of the component depicted on the TDD for any particular building design is the responsibility of the Building Designer.
- The Building Designer is responsible for the anchorage of the truss at all bearing locations as required to resist uplift, gravity and lateral loads, and for all Truss-to-Structural Element connections except Truss-to-Truss connections.
- The Building Designer shall ensure that the supporting structure can accommodate the vertical and/or horizontal truss deflections.
- Unless specifically stated otherwise, each Design assumes trusses will be adequately protected from the environment and will not be used in corrosive environments unless protected using an approved method. This includes not being used in locations where the sustained temperature is greater than 150°F.
- Trusses are designed to carry loads within their plane. Any out-of-plane loads must be resisted by the Permanent Building Stability Bracing.
- Design dead loads must account for all materials, including self-weight. The TDD notes will indicate the min. pitch above which the dead loads are automatically increased for pitch effects.
- Trusses installed with roof slopes less than 0.25/12 may experience (but are not designed for) ponding. The Building Designer must ensure that adequate drainage is provided to prevent ponding.
- Camber is a non-structural consideration and is the responsibility of truss fabricator.

Handling, Installing, Restraint & Bracing

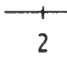

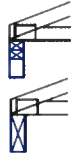
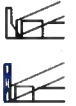
- The Contractor is responsible for the proper handling, erection, restraint and bracing of the Trusses. In lieu of job-specific details, refer to BCSI.
- ANSI/TPI 1 stipulates that for trusses spanning 60' or greater, the Owner shall contract with any Registered Design Professional for the design and inspection of the temporary and permanent truss restraint and bracing. Simpson Strong-Tie is not responsible for providing these services.
- Trusses require permanent lateral restraint to be applied to chords and certain web members (when indicated) at the locations or intervals indicated on the TDD. Web restraints are to be located at mid points, or third points of the member and chord purlins are not to exceed the spacing specified by the TDD. Chords shown without bracing indicated are assumed to be continuously braced by sheathing or drywall. Permanent lateral restraint shall be accomplished in accordance with: standard industry lateral restraint/bracing details in BCSI-B3 or BCSI-B7, supplemental bracing details referenced on the TDD, or as specified in a project-specific truss permanent bracing plan provided by the Building Designer.
- Additional building stability permanent bracing shall be installed as specified in the Construction Documents.
- Special end wall bracing design considerations may be required if a flat gable end frame is used with adjacent trusses that have sloped bottom chords (see BCSI-B3).
- Do not cut, drill, trim, or otherwise alter truss members or plates without prior written approval of an engineer, unless specifically noted on the TDD.
- Piggyback assemblies shall be braced as per BCSI-B3 unless otherwise specified in the Construction Documents.
- For floor trusses, when specified, Strongbacking shall be installed per BCSI-B7 unless otherwise specified in the Construction Documents.
- For IBC 2021 and newer, truss chords without a diaphragm require a project specific bracing design prepared by a registered design professional.

Referenced Standards

ANSI/TPI 1: National Design Standard for Metal Plate Connected Wood Truss Construction, a Truss Plate Institute publication (www.tpinst.org).

BCSI: Guide to Good Practice for Handling, Installing, Restraining & Bracing Metal Plate Connected Wood Trusses, a joint publication of the Truss Plate Institute (www.tpinst.org) and the Structural Building Components Association (www.sbcindustry.com).

Symbols and Nomenclature

- 5x7** Plate size; the first digit is the plate width (perp. to the slots) and the second digit is the plate length (parallel to the slots).
- 5x7-18** -18, -18S5, or -18S6 following the plate size indicates different 18 gauge plate types.
- These symbols following the plate size indicate the direction of the plate length (and tooth slots) for square and nearly square plates.
- 10-3-14** Dimensions are shown in feet-inches-sixteenths (for this example, the dimension is 10'-3 14/16").
-  Joints are numbered left to right, first along the top chord and then along the bottom chord. Mid-panel splice joint numbers are not shown on the drawing. Members are identified using their end joint numbers (e.g., TC 2-3).
-  When this symbol is shown, permanent lateral restraint is required. Lateral restraint may be applied to either edge of the member. See Note 3 under Handling, Installing, Restraint & Bracing for more information.
-  Bearing supports (wall, beam, etc.), locations at which the truss is required to have full bearing. Minimum required bearing width for the given reactions are reported on the TDD. Required bearing widths are based on the truss material and indicated PSI of the support material. The Building Designer is responsible for verifying that the capacity of the support material exceeds the indicated PSI, and for all other bearing design considerations.
-  Truss-to-Truss or Truss-to-Structural Element connection, which require a hanger or other structural connection (e.g., toe-nail) that has adequate capacity to resist the maximum reactions specified in the Reaction Summary. Structural connection type is not limited by type shown on TDD. Toe-nails may be used where hanger type shown where allowed by detail or other connection design information. Design of the Structural Element and the connection of the Truss to a Structural Element is by others.

Note: These symbols are for graphical interpretation only; they are not intended to give any indication of the geometry requirements of the actual item that is represented.

Materials and Fabrication

- Design assumes truss is manufactured in accordance with the TDD and the quality criteria in ANSI/TPI 1 Chapter 3, unless more restrictive criteria are part of the contract specifications.
- Unless specifically stated, lumber shall not exceed 19% moisture content at time of fabrication or in service.
- Design is not applicable for use with fire retardant, preservative treated or green lumber unless specifically stated on the TDD.
- Plate type, size, orientation and location indicated are based on the specified design parameters. Larger plate sizes may be substituted in accordance with ANSI/TPI, Section 3.6.3. Plates shall be embedded within ANSI/TPI 1 tolerances on both faces of the truss at each joint, unless noted otherwise.
- Strong plates shall be centered on the joint unless otherwise specified.

DSB-89 Recommended Design Specification for Temporary Bracing of Metal Plate Connected Wood Trusses, a Truss Plate Institute publication (www.tpinst.org).

NDS: National Design Specification for Wood Construction published by American Forest & Paper Association and American Wood Council.
ESR-2762 Simpson Strong-Tie® AS Truss Plates are covered under ESR-2762 published by the International Code Council Evaluation Service (www.icc-es.org).

Project: QTREC0927061 - NEW JOB

Truss ID: T1

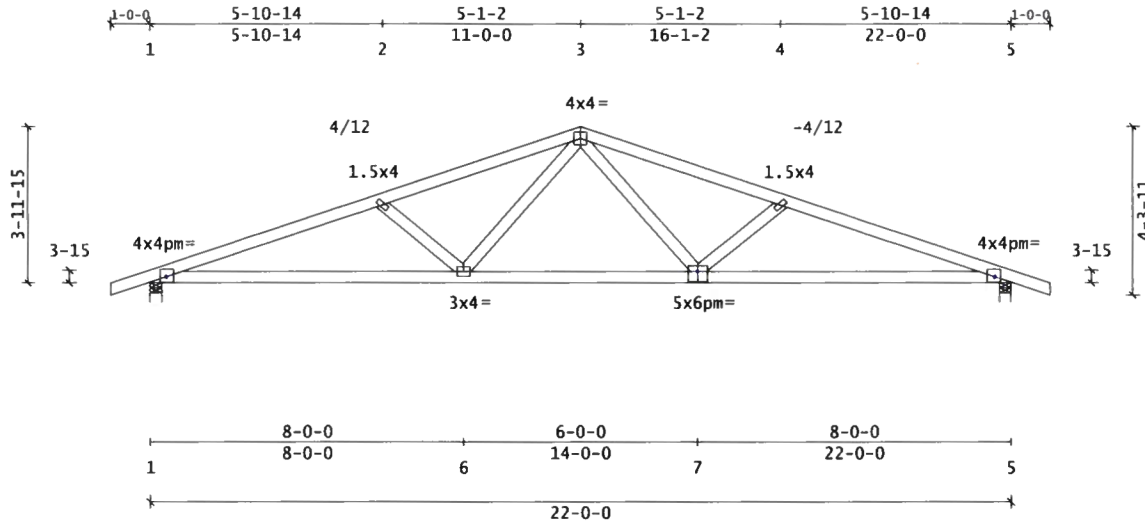
Truss Mfr Customer: NEW JOB
 Truss Mfr Contact: Kim
 Project Location:
 Project Note(s):

Midwest Manufacturing - Eau Claire, WI

Plies: 1
 Spacing: 2-00-00 o.c.
 Quantity: 1
 Weight: 90.6 lb

SID: 0004155921
 TID: 309668
 Date: 03 / 27 / 26
 Page: 1 of 1

TC Plate offsets (X,Y): J1(0-03,0-05), J5(0-04,0-06)



BC Plate offsets (X,Y): J7(0,-0-11)

IRC-2018 | ASCE7-16 | TPI 1-2014

PSF Live	20.0	Dead	7.0	Load Duration	Factors
TC	0.0	Lbr	1.15	Live	1.15
BC	0.0	Plt	1.15	Snow	1.60
Total	37.0				
OH Soffit	1.0				
Spacing:	2-00-00 o.c.	Plies:	1		
Repetitive Member Increase:	Yes				
Green Lbr:	No Temp: T ≤ 100				
Treated Lbr:	No Incised Lbr: No				
Seasoned Lbr:	Yes Wet Service: No				

Ground Snow Load (Pg) = 30.0 psf

Pf = 20.8 psf, Cs = 1.00, Ps = 20.8 psf
 Risk Category: II (Is = 1.00)
 Terrain Category: B
 Roof Exp: Fully Exposed (Ce = 0.90)
 Thermal Cond: Above Freeze (Ct = 1.10)
 Unobstructed Slippery Roof: No
 Low-Slope Minimum (Pm): No
 Unbalanced Snow Loads: Yes
 Rain Surcharge: No | Ice Dam Chk: Yes
 Lu (max) = 20-00-00

Wind Speed (Vult) = 115 mph

Risk Category: II (I = 1.00)
 Exposure Category: B
 Bldg Dims: L = 0.0 ft B = 0.0 ft
 MRH(h) = 15.0ft Kzt = 1.00 Ke = 1.00
 Bldg Type: Enclosed
 Wind DL (psf): TC = 4.2 BC = 6.0
 End Vertical Exposed: L = Yes R = Yes
 C&C Location: End Zone | a = 4-00-00
 Design: MWFRS/C&C | Reactions: MWFRS
 Net Uplift: 0.0 psf

--Additional Live Load Checks--

10 psf Non-Concurrent BCLL:	Yes
20 psf BCLL Limited Storage:	Yes
200 lb Moving BCLL Access:	No
300 lb. Moving TCLL Maint:	No
2000 lb. Moving TCLL Office:	No
300 lb. TC/BC Person Loading:	No
Partial Length TCLL:	Yes

----Plate Tolerance Checks----

Fabrication: 15% (Cq = 0.85), u.n.o.
 Rotation: +/- 10 degrees, u.n.o.

Material Summary

TC	2x4	SYP	#1
BC	2x4	SYP	#1
Webs	2x4	SYP	#1

Member Forces Summary

Max CSI in TC PANEL	1 - 2	0.38	
Max CSI in BC PANEL	1 - 6	0.46	
Max CSI in Web	6 - 3	0.10	
Mbr Jnt-Jnt	Tens	Comp	CSI
TC OH-1	20	0	0.05
1-2	41	2064	0.38
2-3	13	1717	0.37
3-4	13	1717	0.37
4-5	41	2064	0.38
5-OH	20	0	0.05
BC 1-6	1924	3	0.46
5-7	1924	3	0.46
6-7	1199	0	0.34
Web 2-6	82	487	0.07
3-6	603	0	0.10
3-7	603	0	0.10
4-7	82	487	0.07

Reaction Summary (lbs)

Jnt	X	Location	Model	Maximum LDF	Minimum LDF	Brg_Width	Req_Width	Type	Mat	PSI
1	01-12	Pin		939	1.15	-11	1.60	03-08	01-08	Wall DFL 781-
5	21-10-04	HRoll		939	1.15	-11	1.60	03-08	01-08	Wall DFL 781-
Horizontal @ Jnt 1:				26	1.15	-26	1.15			

~ Includes adjustment for Bearing Area Factor, Cb.

Loads Summary

· User-defined unbalanced Top Chord Live Loads (TCLL) occurring at 11-00-00 are based on 1.00 full and 0.00 reduced load factors.
 · See Loadcase Report for load combinations and additional details.

Design Notes:

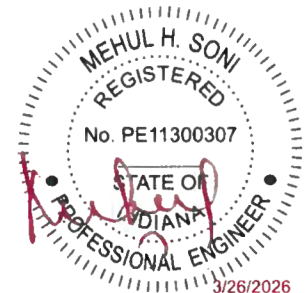
- Plates designed for Cq at 0.85 and Rotational Tolerance of 10.0 degrees.
- Plates located at TC pitch breaks meet the prescriptive minimum size requirement to transfer unblocked diaphragm loads across those joints.
- A "pm" next to the plate size indicates that the plate has been user modified; see Plate Offsets for any special positioning requirements.

Deflection Summary

TrussSpan	Limit	Actual(in)	Location
Vert LL	L/240	L/999(-0.10)	6- 7
Vert DL	L/90	L/999(-0.12)	7- 5
Vert CR	L/180	L/999(-0.22)	7- 5
Horz LL	0.75in	(0.03)	@t 5
Horz CR	1.25in	(0.05)	@t 5
Ohng CR	2L/180	2L/999(-0.00)	1- 1
Ohng CR	2L/180	2L/999(-0.00)	5- 5

Bracing Data Summary

-----Bracing Data-----
 Chords; continuous except where shown
 Web Bracing -- None



NOTICE A copy of this design shall be furnished to the erection contractor. The design of this individual truss is based on design criteria and requirements supplied by the Truss Manufacturer and relies upon the accuracy and completeness of the information set forth by the Building Designer. A seal on this drawing indicates acceptance of professional engineering responsibility solely for the truss component design shown. See the cover page and the "Important Information & General Notes" page for additional information. All connector plates shall be manufactured by Simpson Strong-Tie Company, Inc in accordance with ESR-2762. All connector plates are 20 gauge, unless the specified plate size is followed by a "-18" which indicates an 18 gauge plate, or "S# 18", which indicates a high tension 18 gauge plate.



Component Solutions
 Truss Studio V
 2025.5.0.97
 Helpdesk: 1-866-252-8606
 CSHelp@strongtie.com



COMPONENT DESIGN DRAWINGS & DETAILS

**Simpson Strong-Tie
Company, Inc.**

5956 W. Las Positas Blvd.
Pleasanton, CA 94588
(800) 999-5099
www.strongtie.com

Prepared for: Midwest Manufacturing - Eau Claire, WI
Project: QTREC0905238
Date: 3/26/2026 1:36 PM
Project Location: Project location has not been provided.
SST Project (TID): 309669

Notes:

1. The component design drawings referenced below have been prepared based on design criteria and requirements set forth in the Construction Documents, as communicated by the Component Manufacturer.
2. The engineer's signature on these drawings indicates professional engineering responsibility solely for the individual components to be able to resist the design loads indicated, utilizing all the design parameter and materials indicated or referenced on each individual design.
3. It is the Building Designer's responsibility to review the component design drawings to insure compatibility with the Building design, Refer to all notes on the individual component design drawings.

1 Component Design Drawing(s):

1-T1E: SID 4155922

General Notes

1. Each Truss Design Drawing (TDD) provided with this sheet has been prepared in conformance with ANSI/TPI 1. Refer to ANSI/TPI 1 Chapter 2 for the responsibilities of all parties involved, which include but are not limited to the responsibilities listed on this sheet, and for the definitions of all capitalized terms referenced in this document.
2. TDDs should not be assumed to be to scale.
3. The Contractor and Building Designer shall review and approve the Truss Submittal Package.
4. The suitability and use of the component depicted on the TDD for any particular building design is the responsibility of the Building Designer.
5. The Building Designer is responsible for the anchorage of the truss at all bearing locations as required to resist uplift, gravity and lateral loads, and for all Truss-to-Structural Element connections except Truss-to-Truss connections.
6. The Building Designer shall ensure that the supporting structure can accommodate the vertical and/or horizontal truss deflections.
7. Unless specifically stated otherwise, each Design assumes trusses will be adequately protected from the environment and will not be used in corrosive environments unless protected using an approved method. This includes not being used in locations where the sustained temperature is greater than 150°F.
8. Trusses are designed to carry loads within their plane. Any out-of-plane loads must be resisted by the Permanent Building Stability Bracing.
9. Design dead loads must account for all materials, including self-weight. The TDD notes will indicate the min. pitch above which the dead loads are automatically increased for pitch effects.
10. Trusses installed with roof slopes less than 0.25/12 may experience (but are not designed for) ponding. The Building Designer must ensure that adequate drainage is provided to prevent ponding.
11. Camber is a non-structural consideration and is the responsibility of truss fabricator.

Handling, Installing, Restraint & Bracing

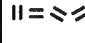
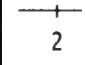



1. The Contractor is responsible for the proper handling, erection, restraint and bracing of the Trusses. In lieu of job-specific details, refer to BCSI.
2. ANSI/TPI 1 stipulates that for trusses spanning 60' or greater, the Owner shall contract with any Registered Design Professional for the design and inspection of the temporary and permanent truss restraint and bracing. Simpson Strong-Tie is not responsible for providing these services.
3. Trusses require permanent lateral restraint to be applied to chords and certain web members (when indicated) at the locations or intervals indicated on the TDD. Web restraints are to be located at mid points, or third points of the member and chord purlins are not to exceed the spacing specified by the TDD. Chords shown without bracing indicated are assumed to be continuously braced by sheathing or drywall. Permanent lateral restraint shall be accomplished in accordance with: standard industry lateral restraint/bracing details in BCSI-B3 or BCSI-B7, supplemental bracing details referenced on the TDD, or as specified in a project-specific truss permanent bracing plan provided by the Building Designer.
4. Additional building stability permanent bracing shall be installed as specified in the Construction Documents.
5. Special end wall bracing design considerations may be required if a flat gable end frame is used with adjacent trusses that have sloped bottom chords (see BCSI-B3).
6. Do not cut, drill, trim, or otherwise alter truss members or plates without prior written approval of an engineer, unless specifically noted on the TDD.
7. Piggyback assemblies shall be braced as per BCSI-B3 unless otherwise specified in the Construction Documents.
8. For floor trusses, when specified, Strongbacking shall be installed per BCSI-B7 unless otherwise specified in the Construction Documents.
9. For IBC 2021 and newer, truss chords without a diaphragm require a project specific bracing design prepared by a registered design professional.

Referenced Standards

ANSI/TPI 1: National Design Standard for Metal Plate Connected Wood Truss Construction, a Truss Plate Institute publication (www.tpinst.org).

BCSI: Guide to Good Practice for Handling, Installing, Restraining & Bracing Metal Plate Connected Wood Trusses, a joint publication of the Truss Plate Institute (www.tpinst.org) and the Structural Building Components Association (www.sbcindustry.com).

Symbols and Nomenclature

- 5x7** Plate size; the first digit is the plate width (perp. to the slots) and the second digit is the plate length (parallel to the slots).
- 5x7-18** -18, -18S5, or -18S6 following the plate size indicates different 18 gauge plate types.
-  These symbols following the plate size indicate the direction of the plate length (and tooth slots) for square and nearly square plates.
- 10-3-14** Dimensions are shown in feet-inches-sixteenths (for this example, the dimension is 10'-3 14/16").
-  Joints are numbered left to right, first along the top chord and then along the bottom chord. Mid-panel splice joint numbers are not shown on the drawing. Members are identified using their end joint numbers (e.g., TC 2-3).
-  When this symbol is shown, permanent lateral restraint is required. Lateral restraint may be applied to either edge of the member. See Note 3 under Handling, Installing, Restraint & Bracing for more information.
-  Bearing supports (wall, beam, etc.), locations at which the truss is required to have full bearing. Minimum required bearing width for the given reactions are reported on the TDD. Required bearing widths are based on the truss material and indicated PSI of the support material. The Building Designer is responsible for verifying that the capacity of the support material exceeds the indicated PSI, and for all other bearing design considerations.
-  Truss-to-Truss or Truss-to-Structural Element connection, which require a hanger or other structural connection (e.g., toe-nail) that has adequate capacity to resist the maximum reactions specified in the Reaction Summary. Structural connection type is not limited by type shown on TDD. Toe-nails may be used where hanger type shown where allowed by detail or other connection design information. Design of the Structural Element and the connection of the Truss to a Structural Element is by others.

Note: These symbols are for graphical interpretation only; they are not intended to give any indication of the geometry requirements of the actual item that is represented.

Materials and Fabrication

1. Design assumes truss is manufactured in accordance with the TDD and the quality criteria in ANSI/TPI 1 Chapter 3, unless more restrictive criteria are part of the contract specifications.
2. Unless specifically stated, lumber shall not exceed 19% moisture content at time of fabrication or in service.
3. Design is not applicable for use with fire retardant, preservative treated or green lumber unless specifically stated on the TDD.
4. Plate type, size, orientation and location indicated are based on the specified design parameters. Larger plate sizes may be substituted in accordance with ANSI/TPI, Section 3.6.3. Plates shall be embedded within ANSI/TPI 1 tolerances on both faces of the truss at each joint, unless noted otherwise.
5. Truss plates shall be centered on the joint unless otherwise specified.

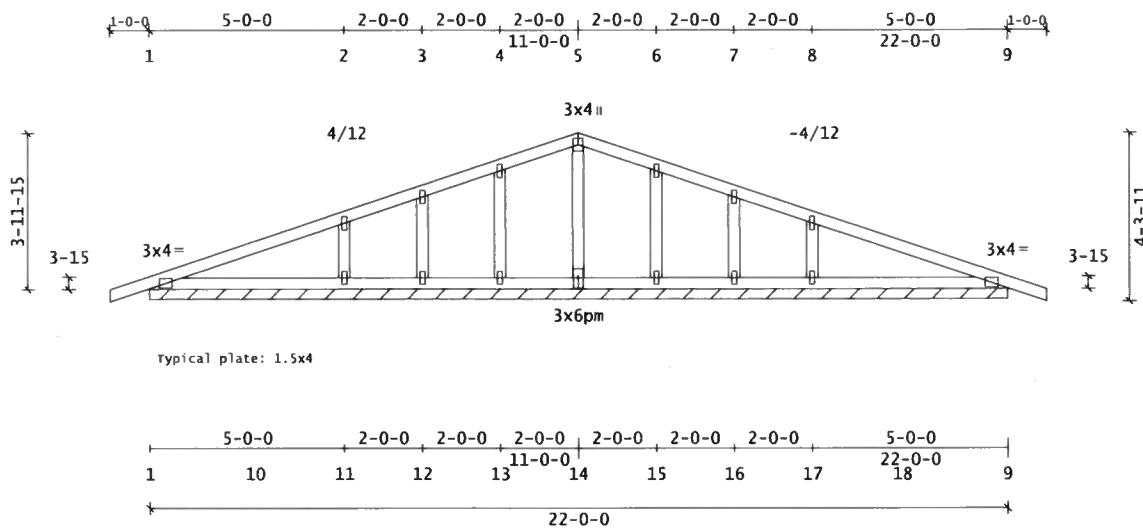
DSB-89 Recommended Design Specification for Temporary Bracing of Metal Plate Connected Wood Trusses, a Truss Plate Institute publication (www.tpinst.org).

NDS: National Design Specification for Wood Construction published by American Forest & Paper Association and American Wood Council.

ESR-2762 Simpson Strong-Tie® AS Truss Plates are covered under ESR-2762 published by the International Code Council Evaluation Service (www.icc-es.org).

Truss Mfr Customer: NEW JOB Midwest Manufacturing - Eau Claire, WI Plies: 1 SID: 0004155922
 Truss Mfr Contact: Kim Spacing: 2-00-00 o.c. TID: 309669
 Project Location: Quantity: 2 Date: 03 / 27 / 26
 Project Note(s): Weight: 76.3 lb Page: 1 of 1

TC Plate offsets (X,Y): None



BC Plate offsets (X,Y): J14(0,0-04)

<p>IRC-2018 ASCE7-16 TPI 1-2014</p> <p>PSF Live Dead Load Duration Factors TC 42.0 7.0 Live Snow Wind BC 0.0 10.0 Lbr 1.15 1.15 1.60 Total 59.0 Plt 1.15 1.15 1.60 OH Soffit 1.0 Spacing: 2-00-00 o.c. Plies: 1 Repetitive Member Increase: Yes Green Lbr: No Temp: T ≤ 100° Treated Lbr: No Incised Lbr: No Seasoned Lbr: Yes Wet Service: No</p>	<p>Ground Snow Load (Pg) = 60.0 psf</p> <p>Pf = 41.6 psf, Cs = 1.00, Ps = 41.6 psf Risk Category: II (Is = 1.00) Terrain Category: B Roof Exp: Fully Exposed (Ce = 0.90) Thermal Cond: Above Freeze (Ct = 1.10) Unobstructed Slippery Roof: No Low-Slope Minimum (Pm): No Unbalanced Snow Loads: Yes Rain Surcharge: No Ice Dam Chk: Yes Lu (max) = 20-00-00</p>	<p>Wind Speed (Vult) = 115 mph</p> <p>Risk Category: II (I = 1.00) Exposure Category: B Bldg Dims: L = 0.0 ft B = 0.0 ft MRH(h) = 15.0ft Kzt = 1.00 Ke = 1.00 Bldg Type: Enclosed Wind DL (psf): TC = 4.2 BC = 6.0 End Vertical Exposed: L = Yes R = Yes C&C Location: End Zone a = 4-00-00 Design: MWFRS/C&C Reactions: MWFRS Net Uplift: 0.0 psf</p>	<p>--Additional Live Load Checks--</p> <p>10 psf Non-Concurrent BCLL: Yes 20 psf BCLL Limited Storage: Yes 200 lb Moving BCLL Access: No 300 lb. Moving TC/LL Maint: No 2000 lb. Moving TC/LL Office: No 300 lb. TC/BC Person Loading: No Partial Length TC/LL: Yes</p> <p>---Plate Tolerance Checks---</p> <p>Fabrication: 15% (Cq = 0.85), u.n.o. Rotation: +/- 10 degrees, u.n.o.</p>
--	--	--	---

Material Summary

TC	2x4	SPF	#2
BC	2x4	SPF	#2
Webs	2x4	SPF	Stud

Member Forces Summary

Max CSI in TC PANEL	1 - 2	0.34
Max CSI in BC PANEL	1 - 10	0.20
Max CSI in Web	11 - 2	0.12

Mbr Jnt-Jnt Tens Comp CSI

TC	1-5	36	161	0.34
	5-9	36	161	0.34
BC	1-14	95	1	0.20
	9-14	95	1	0.20
Web	2-11	54	533	0.12
	3-12	19	194	0.04
	4-13	30	323	0.09
	5-14	0	136	0.04
	6-15	30	323	0.09
	7-16	19	194	0.04
	8-17	54	533	0.12

Reaction Summary (lbs except as noted)

Jnt	XLocation	Model	Maximum LDF	Minimum LDF	Brg_Width	Req_Width	Type	Mat	PSI
1	04-14	Pin	401 1.15	-19	1.60	22-00-00	04-06	Wall	DFL 625~
11	5-00-00	Pin	562 1.15	-27	1.60	22-00-00	04-06	Wall	DFL 625~
17	17-00-00	Pin	562 1.15	-27	1.60	22-00-00	04-06	Wall	DFL 625~
9	21-07-02	Pin	401 1.15	-19	1.60	22-00-00	04-06	Wall	DFL 625~
Horizontal @ Jnt 14:			26 1.15	-26 1.15					
Jnt 1 - Jnt 9 (p/f):			39 1.15	0					

Reactions not shown: < 400 > -150
 ~ Includes adjustment for Bearing Area Factor, Cb.

Loads Summary

- User-defined unbalanced Top Chord Live Loads (TC/LL) occurring at 11-00-00 are based on 1.00 full and 0.00 reduced load factors.
- See Loadcase Report for load combinations and additional details.

Design Notes:

- Plates designed for Cq at 0.85 and Rotational Tolerance of 10.0 degrees.
- Plates located at TC pitch breaks meet the prescriptive minimum size requirement to transfer unblocked diaphragm loads across those joints.
- A "pm" next to the plate size indicates that the plate has been user modified; see Plate Offsets for any special positioning requirements.
- Lumber and plating have been applied symmetrically.

Installation Notes:

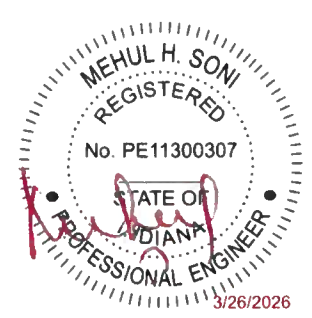
- If this truss is exposed to wind load perpendicular to the plane of the truss, gable studs must be braced according to the Construction Documents, BCSI-83, or a gable stud bracing detail matching the design wind speed shown. Lateral bracing of the truss itself to resist out-of-plane wind load must be in accordance with the Construction Documents.
- The maximum rake overhang length is 12.0".

Deflection Summary

TrussSpan	Limit	Actual(in)	Location
Vert LL	L/240	L/999(-0.01)	18- 9
Vert DL	L/90	L/999(-0.00)	18- 9
Vert CR	L/180	L/999(-0.01)	18- 9
Horz LL	0.75in	(0.00)	@Jt 9
Horz CR	1.25in	(0.00)	@Jt 9
Ohng CR	2L/180	2L/999(-0.00)	1- 1
Ohng CR	2L/180	2L/999(-0.00)	9- 9

Bracing Data Summary

-----Bracing Data-----
 Chords; continuous except where shown
 Web Bracing -- None

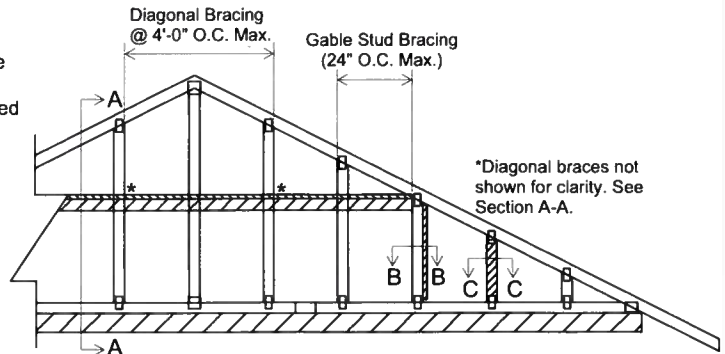


NOTICE A copy of this design shall be furnished to the erection contractor. The design of this individual truss is based on design criteria and requirements supplied by the Truss Manufacturer and relies upon the accuracy and completeness of the information set forth by the Building Designer. A seal on this drawing indicates acceptance of professional engineering responsibility solely for the truss component design shown. See the cover page and the "Important Information & General Notes" page for additional information. All connector plates shall be manufactured by Simpson Strong-Tie Company, Inc in accordance with ESR-2762. All connector plates are 20 gauge, unless the specified plate size is followed by a "-18" which indicates an 18 gauge plate, or "#18", which indicates a high tension 18 gauge plate.

Component Solutions
 Truss Studio V
 2025.5.0.97
 Helpdesk: 1-866-252-8606
 CSHelp@strongtie.com

NOTES:

1. This detail provides bracing/reinforcement options for the gable studs to resist the out-of-plane wind loading. Refer to the individual truss design drawing for bracing/reinforcement requirements for resisting the vertical (in-plane) loads assumed in the design of the gable end frame. Additional bracing/reinforcement at the end of the building and/or at the gable end wall may be required. Refer to the Building Designer/Construction Documents for all gable end frame and roof system bracing requirements. For additional information, see BCSI-B3.
2. This detail does not apply to structural gables.
3. Connection requirements between the gable end frame and the wall to be specified by the Building Designer.
4. The gable end frame must match the profile of the adjacent trusses. Do not use a gable end frame with a flat bottom chord next to trusses with sloped bottom chords, such as scissor or vaulted trusses.

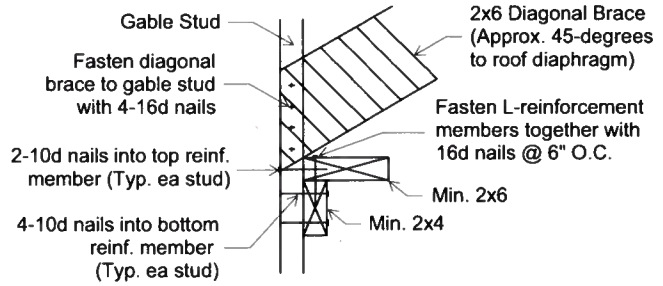
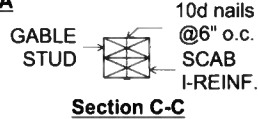
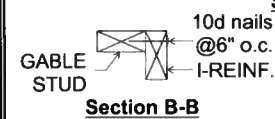
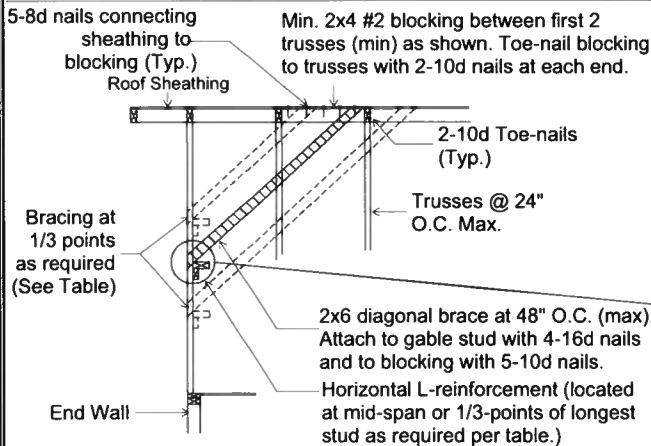


GABLE END WITH STUD BRACING/REINFORCEMENT

MINIMUM GABLE STUD SIZE, SPECIES & GRADE	MAX. GABLE STUD SPACING	WITHOUT BRACE	L-REINFORCEMENT ¹	SCAB REINFORCEMENT	DIAGONAL BRACING @ MID-SPAN ²	DIAGONAL BRACING @ 1/3 POINTS ²
		MAXIMUM STUD LENGTH ³				
2X4 SPF STUD or STANDARD	12" O.C.	5-1-12	9-0-12	10-3-12	10-3-12	15-5-12
	16" O.C.	4-8-4	8-3-0	9-4-8	9-4-8	14-0-12
	24" O.C.	4-1-0	7-0-0	8-2-4	8-2-4	12-3-8

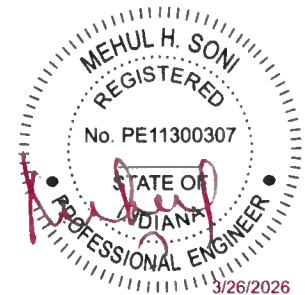
DETAIL LIMITATIONS:
 Max. Mean Roof Height: 30'
 Category: II
 Exposure: B or C
 Load Duration Factor: 1.6
 Wind Speed: 90 mph Nominal
 (115 mph Ultimate)

1. L- and Scab Reinforcements shall be minimum 2x4 stud grade and must be a minimum of 90% of the gable stud length. Fasten the reinforcement member to the gable stud with 10d nails @ 6" o.c.
2. Attach horizontal reinforcing member at mid-span (or 1/3 points as required) of the longest stud and install diagonal bracing @ 4' o.c. (max) as shown in Section A-A.
3. Tabulated maximum stud lengths are based on components and cladding wind pressures using the wind design parameters listed in the detail limitations. Gable stud deflection criteria is L/240.



NOTE: Diagonal braces over 6'-3" require a 2x4 T-brace attached to one narrow edge. Diagonal braces over 12'-6" require 2x4s attached on both narrow edges. The braces must cover 90% of the diagonal brace and shall be fastened to the narrow edge with 10d nails at 6" o.c. (min. 3" end distance). When attached on both narrow edges, stagger the nails on each side by 3".

Nail Dimension
 16d = 3.5" x 0.162"
 10d = 3" x 0.148"
 8d = 2.5" x 0.131"





STORE # 3136 AVON
10555 E US HIGHWAY 36
AVON, IN 46123

EMAIL: AVONBuildingMaterials@menards.com

Product must be paid for before it
will be ordered from our vendor.
Prices shown are valid today only.

Scan Barcode at Order Pickup Entrance

AVON 30367093



**SPECIAL ORDER CONTRACT
CUSTOMER COPY
PAGE 1 OF 1**

CUSTOMER NAME - ADDRESS - PHONE

Trisler, Hiram
110 W Mitchell Ave
Martinsville, IN 46151-2117
Ph: (765) 318-2683

ADDITIONAL INFORMATION
Ship Direct to Guest (UPS/FedEx)

Trisler, Hiram
110 W Mitchell Ave
Martinsville, IN 46151

TEXT: (765)318-2683

IMPORTANT

1. Verify quoted product and quantity
2. Product will be ordered upon payment
3. Track order on Menards.com
4. Pick up order within 14 days of arrival
5. Retain receipt

Note: All vehicles entering the outside yard
will be subject to inspection upon exiting

ESTIMATED ARRIVAL DATE
NOT BINDING ON MENARD, INC.
BASED ON PROMISES BY OTHERS 04/02/26

SOLD BY	ORDER DATE
STEVE G.	03/26/26

NOTIFICATION:
EMAIL: trislerh@hotmail.com
JOB DESC: 22x28 plans, stamps

QTY ORDERED	DESCRIPTION		SKU	UNIT PRICE	EXTENDED PRICE
1 EACH	CUSTOM GARAGE-D Blue Print DesignID=313653753753	DIC USE ONLY	195-9908	499.00	499.00

Site Plan & Setbacks

READ THIS CONTRACT CAREFULLY. The terms and conditions set forth in this document are a complete and final expression of the parties. The contract cannot be altered except by written instrument explicitly signed and executed by the General Manager. Any and all claims under this contract must be brought within one year of purchase. "Custom made" special order merchandise purchased from Menards is **NON-REFUNDABLE**. "Non-custom made" Special order product may be refunded at Menards sole discretion with a 25% restocking fee. Purchaser is responsible for providing to Menards all measurements, sizes, and colors stated above. Purchaser's exclusive remedy, if any product is defective or fails to conform to the terms of the contract, is replacement of the product. All defects and non-conformities must be reported to Menards within 3 days of receiving the product. Purchaser understands that all product is sold "AS IS," and the manufacturer's warranty, if any, is controlling. **MENARDS MAKES NO WARRANTIES, EXPRESS OR IMPLIED AS TO THE MERCHANTABILITY OR FITNESS FOR A PARTICULAR PURPOSE OF THE PRODUCT.** There are no representations that the products listed herein meet local, state, or federal code requirements. Menards liability shall not exceed the purchase price of the products sold. **MENARDS SHALL NOT BE LIABLE FOR ANY SPECIAL, INCIDENTAL, OR CONSEQUENTIAL DAMAGES.** Menards agrees to email Purchaser when the product is available for pick-up. If Purchaser fails to provide an email address, it is Purchaser's responsibility to check the status of the order by visiting Menards.com. If Purchaser refuses or fails to pick up the product within 14 days from the date of its availability, Menards may liquidate the product and shall be entitled to a 25% restocking fee. Menards may withhold any payment received as partial satisfaction. Purchaser agrees that Menards is not liable if the vendor, which supplies the product on this contract, fails to perform. Purchaser agrees that any and all controversies or claims arising out of or relating to this contract, or the breach thereof, shall be settled by binding arbitration administered by the American Arbitration Association under its applicable Consumer or Commercial Arbitration Rules. Purchaser agrees that all arbitrators selected shall be attorneys. This provision shall supersede any contrary rule or provision of the forum state. **YOUR PURCHASE OF THE PRODUCT ON THIS CONTRACT CONSTITUTES YOUR AGREEMENT TO ALL TERMS AND CONDITIONS STATED ABOVE.**

SUB-TOTAL: 499.00
SHIPPING: 25.00
PRE-TAX TOTAL: 524.00

VENDOR:ADVANCED HOUSE PLANS

For the most accurate and up-to-date status
of your order, please visit:

www.menards.com



Date: 3/26/2026 - 11:36 AM
Design ID: 313653753753
Estimate ID: 6361
Estimated Price: \$8,931.73

**Today's estimated price. Future pricing may go up or down. Tax, labor, and delivery not included.*

MENARDS®

Design & Buy™

GARAGE

How to recall and purchase your design at home:

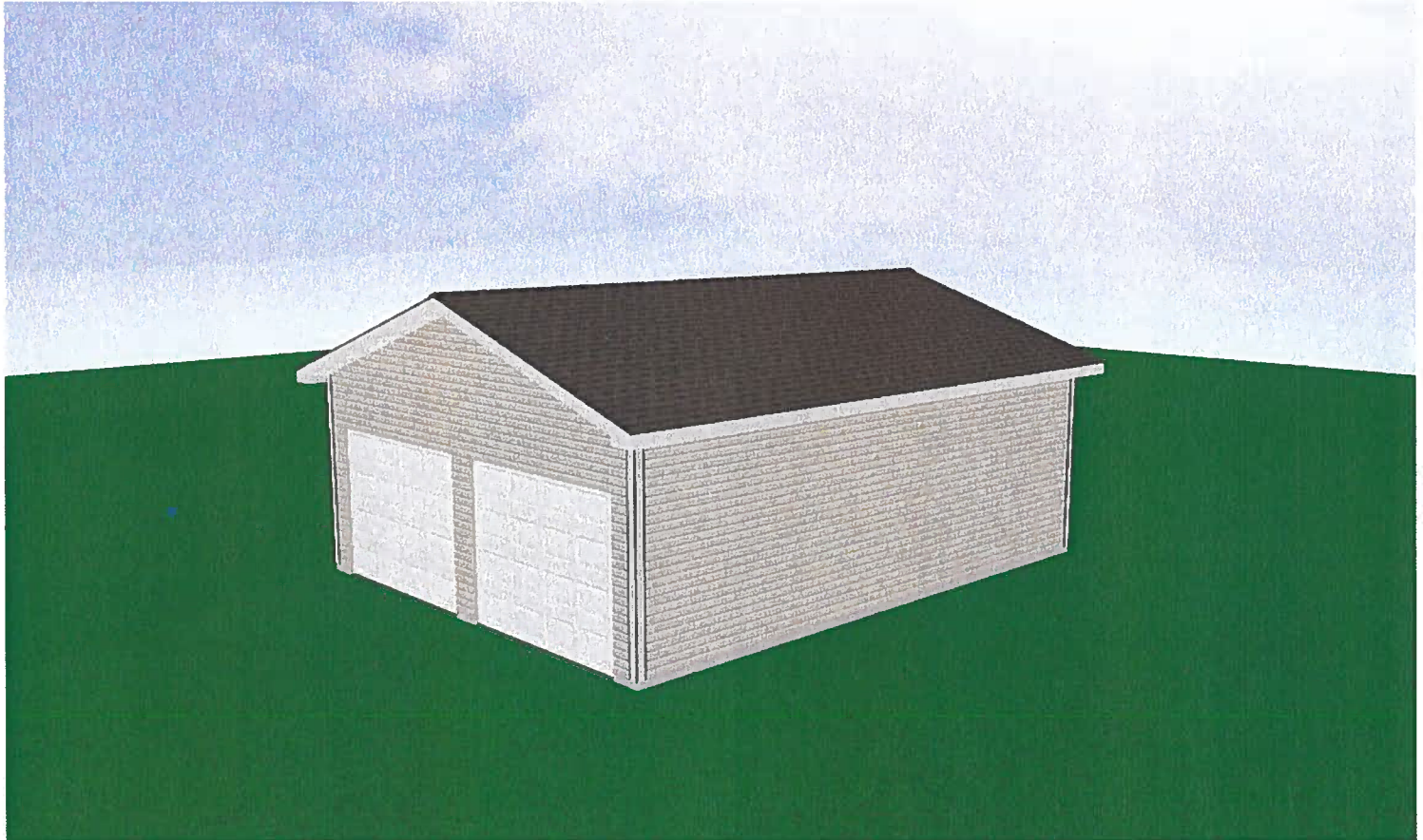


OR

1. On Menards.com, enter "Design & Buy" in the search bar
2. Select the Garage Designer
3. Recall your design by entering Design ID: 313653753753
4. Follow the on-screen purchasing instructions

How to purchase your design at the store:

1. Enter Design ID: 313653753753 at the Design-It Center Kiosk in the Building Materials Department
2. Follow the on-screen purchasing instructions



Floor type (concrete, dirt, gravel) is NOT included in estimated price. The floor type is used in the calculation of materials needed. Labor, foundation, steel beams, paint, electrical, heating, plumbing and delivery are also NOT included in estimated price. This is an estimate. It is only for general price information. This is not an offer and there can be no legally binding contract between the parties based on this estimate. The prices stated herein are subject to change depending upon the market conditions. The prices stated on this estimate are not firm for any time period unless specifically written otherwise on this form. The availability of materials is subject to inventory conditions.

MENARDS IS NOT RESPONSIBLE FOR ANY LOSS INCURRED BY THE CUSTOMER WHO RELIES ON PRICES SET FORTH HEREIN OR ON THE AVAILABILITY OF ANY MATERIALS STATED HEREIN. All information on this form, other than price, has been provided by the customer and Menards is not responsible for any errors in the information on this estimate, including but not limited to quantity, dimension and quality. Please examine this estimate carefully.

MENARDS MAKES NO REPRESENTATIONS, ORAL, WRITTEN OR OTHERWISE THAT THE MATERIALS LISTED ARE SUITABLE FOR ANY PURPOSE BEING CONSIDERED BY THE CUSTOMER. BECAUSE OF WIDE VARIATIONS IN CODES, THERE ARE NO REPRESENTATIONS THAT THE MATERIALS LISTED HEREIN MEET YOUR CODE REQUIREMENTS. THE PLANS AND/OR DESIGNS PROVIDED ARE NOT ENGINEERED. LOCAL CODE OR ZONING REGULATIONS MAY REQUIRE SUCH STRUCTURES TO BE PROFESSIONALLY ENGINEERED AND CERTIFIED PRIOR TO CONSTRUCTION.

For other design systems search "Design & Buy" on Menards.com

Page 1 of 11

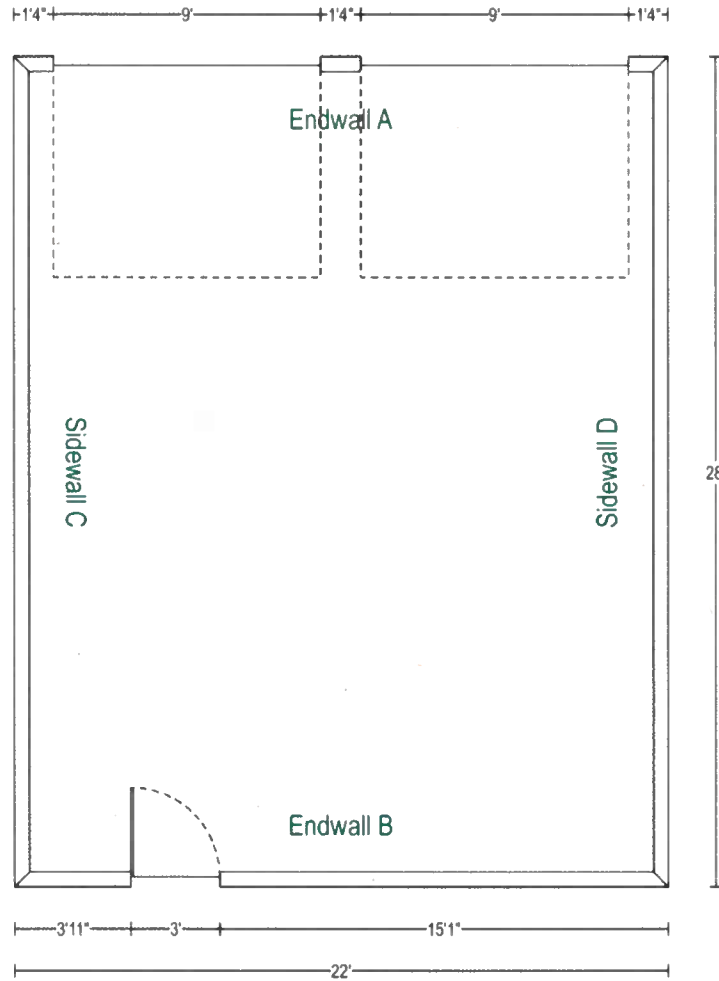
Date: 3/26/2026 - 11:36 AM
Design ID: 313653753753
Estimate ID: 6361
Estimated Price: \$8,931.73

**Today's estimated price. Future pricing may go up or down. Tax, labor, and delivery not included.*

MENARDS®

Design & Buy™ GARAGE

Garage Image



Date: 3/26/2026 - 11:36 AM

Design ID: 313653753753

Estimate ID: 6361

Estimated Price: \$8,931.73

**Today's estimated price. Future pricing may go up or down. Tax, labor, and delivery not included.*

MENARDS®

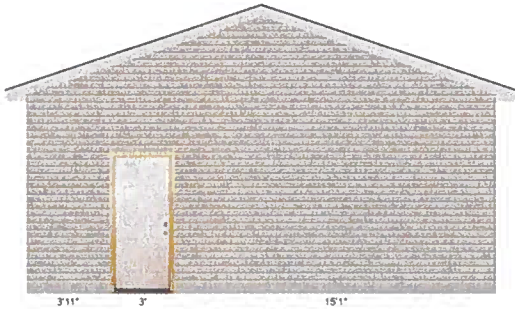
Design & Buy™

GARAGE

Dimensions

Wall Configurations

*Some items like wainscot, gutter, gable accents, are not displayed if selected.



ENDWALL B

Mastercraft® 36W x 80H Primed Steel 6-Panel



SIDEWALL D

Date: 3/26/2026 - 11:36 AM
Design ID: 313653753753
Estimate ID: 6361
Estimated Price: \$8,931.73

**Today's estimated price. Future pricing may go up or down. Tax, labor, and delivery not included.*

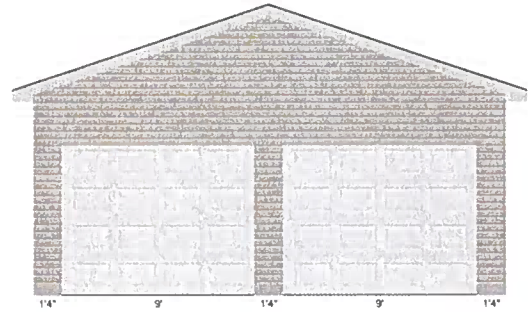
MENARDS®

Design & Buy™

GARAGE



SIDEWALL C



ENDWALL A

9X7 White Raised Panel Extension Spring
9X7 White Raised Panel Extension Spring

Date: 3/26/2026 - 11:36 AM
Design ID: 313653753753
Estimate ID: 6361
Estimated Price: \$8,931.73

**Today's estimated price. Future pricing may go up or down. Tax, labor, and delivery not included.*

Materials

Building Type

Building Location Zip Code: 46168
Building Type: Gable
Framing Type: Stud Wall Framing

Building Info

Building Width: 22'
Building Length: 28'
Building Height: 8'
Wall Framing Stud: 2 x 4
Roof Framing: Truss Construction (Sealed truss designs available on request)
Truss Type: Common (24" on center spacing)
Roof Pitch: 4/12 Pitch
Eave Overhang: 12"
Gable Overhang: 12"
Curb: Poured Curb
Curb Height: 4"
Foundation Type: Poured
Building Plan: Yes I need a Building Plan

Wall Info

Siding Material Types: Vinyl
Vinyl Siding: Concord® Double 4 Dutchlap, Color: Linen
Vinyl Corner Trim Color: Linen
Accent Material Type: None
Wainscot Material Type: None
Wall Sheathing: 7/16 x 4 x 8 OSB(Oriented Strand Board)
House Wrap: Kimberly-Clark BLOCK-IT® 9' x 75' House Wrap
Gable Vents: None

Roof Info

Roof Sheathing: 1/2 x 4 x 8 OSB(Oriented Strand Board)

Date: 3/26/2026 - 11:36 AM
Design ID: 313653753753
Estimate ID: 6361
Estimated Price: \$8,931.73

**Today's estimated price. Future pricing may go up or down. Tax, labor, and delivery not included.*

MENARDS®

Design & Buy™

GARAGE

Roofing Material Type:	Architectural Shingle
Architectural Roofing:	Atlas Castlebrook™ Limited Lifetime Warranty Architectural Shingles (32.8 sq. ft.), Color: Weathered Wood
Roof Underlayment:	VB Shield Synthetic Underlayment 48" x 250' (1000 sq. ft.)
Ice and Water Barrier:	None
Fascia Material Type:	Textured Aluminum Fascia
Fascia:	6" x 12' Aluminum Rustic Fascia, Color: White
Soffit Material Type:	Aluminum Soffit
Soffit:	16" x 12' Aluminum Vented Soffit, Color: White
Gutter Material Type:	None
Ridge Vent:	Owens Corning® VentSure® 11-1/4" x 20' Shingle Over Ridge Vent
Roof Vents:	None

Openings

Service Door:	Mastercraft® 36W x 80H Primed Steel 6-Panel
Overhead Door:	9X7 White Raised Panel Extension Spring
Additional Information:	M5ST Extension Spring
Overhead Door:	9X7 White Raised Panel Extension Spring
Additional Information:	M5ST Extension Spring
Overhead Door Trim Type:	Vinyl
Vinyl Trim Color:	White

Additional Options

Ceiling Insulation:	None
Wall Insulation:	None
Ceiling Finish:	None
Wall Finish:	None
Mounting Blocks:	No
Hydronic Radiant Heat:	No
Anchor bolt:	Grip Fast® 1/2 x 10 HDG Anchor Bolt w/ Nut & Washer
Framing Fasteners:	Grip Fast® 3-1/4 16D Vinyl-Coated Smooth Shank Sinker Nail - 5 lb. Box

Date: 3/26/2026 - 11:36 AM
Design ID: 313653753753
Estimate ID: 6361
Estimated Price: \$8,931.73

**Today's estimated price. Future pricing may go up or down. Tax, labor, and delivery not included.*

MENARDS®

Design & Buy™

GARAGE

Sheathing Fasteners:

Grip Fast® 2-1/2 8D Vinyl-Coated Smooth Shank Sinker Nail -
5 lb. Box

Roofing/Shingle Fasteners:

Grip Fast® 1-1/4 Electro-Galvanized Coil Roofing Nails -
7,200 Count

Truss Fastener:

FastenMaster® TimberLOK® 5/16 x 6 Hex Drive Black Hex
Head Timber Screw - 50 Count

Overhead Opening Hardware:

No

Date: 3/26/2026 - 11:36 AM
Design ID: 313653753753
Estimate ID: 6361
Estimated Price: \$8,931.73

**Today's estimated price. Future pricing may go up or down. Tax, labor, and delivery not included.*



Menards Building Checklist Planning

- Get a permit. Check restrictions, building codes or local zoning to make sure your design complies with all requirements.

THE PLANS AND/OR DESIGNS PROVIDED ARE NOT ENGINEERED. LOCAL CODE OR ZONING REGULATIONS MAY REQUIRE SUCH STRUCTURES TO BE PROFESSIONALLY ENGINEERED AND CERTIFIED PRIOR TO CONSTRUCTION.

- Contact local utilities to ensure construction will not disturb any electrical, cable or plumbing.
- If necessary, hire a professional to help with planning and construction.
- Consider site conditions including soil type, grade, and runoff before finalizing your design.
- Material estimates are calculated based on approximate plate heights of 97", 109", 121" and 145".
- STEEL LENGTHS if selected should be verified prior to purchase.
- Menards offers professional delivery of materials. Delivery is extra based on the distance from your local Menards store to your building site.
- Practice good safety habits, use PPE including eye protection & dust masks during construction.
- Make sure to follow good building practice and all manufacturer's instructions. Use all the hardware and fasteners recommended.

Date: 3/26/2026 - 11:36 AM

Design ID: 313653753753

Estimate ID: 6361

Estimated Price: \$8,931.73

**Today's estimated price. Future pricing may go up or down. Tax, labor, and delivery not included.*

MENARDS®

Design & Buy™

GARAGE

Helpful Hints for Garage Construction

- Studs are estimated 16 inches on center with single treated bottom plate and double top plate.
- For 10- and 12-foot-tall buildings studs should be cut for an approximate 10- or 12-foot plate height.
- If steel is estimated (Pro-Rib or Pro-Snap), the steel lengths should be verified based off the actual framing. Plate height (stud length), truss heel and other framing should be confirmed. Steel is estimated to the inch, make sure the lengths are accurate based on final overall building design.
- Trusses included are estimated at 2 feet on center spacing. The design is based on the zip code provided, design and loading should be verified.
- Trusses should not be cut or modified with the exception of trimming the truss tails to the correct overhang.
- The bottom chord is designed to support standard ceiling and insulation materials.
- Dropped end trusses are estimated with 18 inch and 24 inch gable overhangs.

