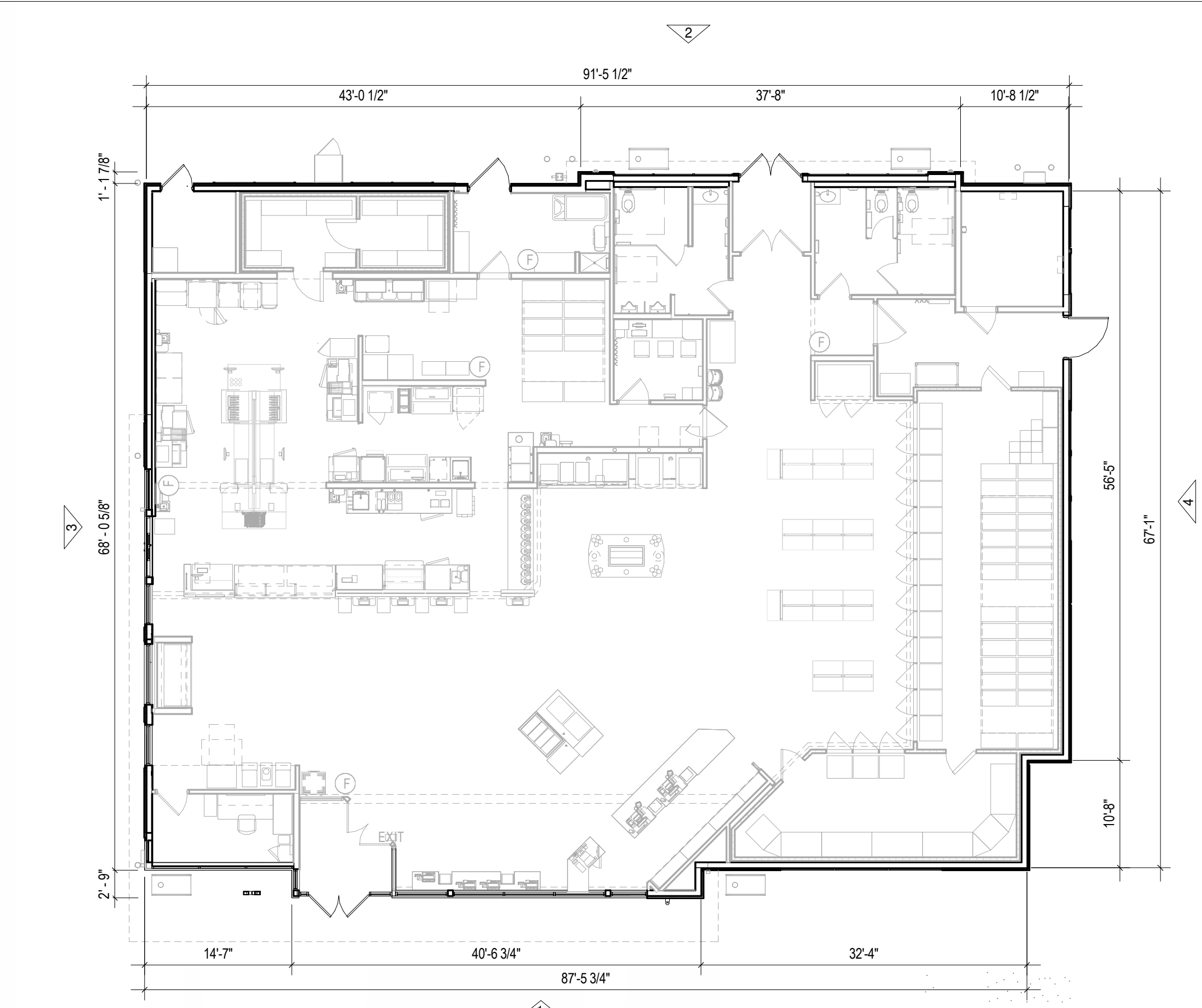




GLAZING CALCULATIONS - FRONT ELEVATIONS		MATERIAL CALCULATIONS - FRONT ELEVATIONS	
TRANSPARENT GLAZING - 313 SQFT	16%	BRICK 1 - 374 SQFT	19%
SPANDREL GLAZING - 291 SQFT	15%	BRICK 3 - 580 SQFT	29%
TOTAL GLAZING - 604 SQFT	31%	COMPOSITE SIDING - 344 SQFT	17%
		GLAZING - 604 SQFT	31%
		AWNING - 67 SQFT	4%
		TOTAL = 1,969 SQFT	100%



5 KEY PLAN
A0.10 3/16" = 1'-0"
GROSS SQUARE FOOTAGE - 6,372

MATERIALS:

1a BRICK - 1 2a COMPOSITE SIDING 1c BRICK - 3 4c TPO ROOFING

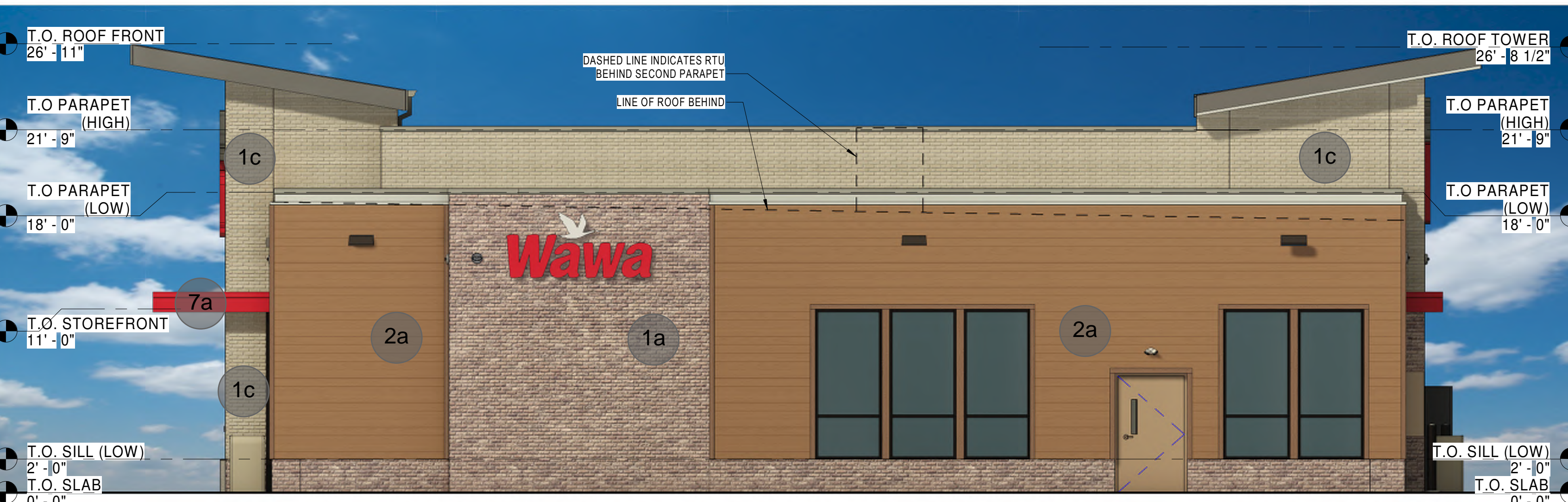
7a METAL OVERHANG BRITE RED



GLAZING CALCULATIONS - REAR ELEVATIONS		MATERIAL CALCULATIONS - REAR ELEVATIONS	
TRANSPARENT GLAZING - 66 SQFT	3%	BRICK 1 - 505 SQFT	26%
SPANDREL GLAZING - 256 SQFT	8%	BRICK 3 - 500 SQFT	25%
TOTAL GLAZING - 324 SQFT	11%	COMPOSITE SIDING - 534 SQFT	31%
		TILE - 76 SQFT	4%
		AWNING - 49 SQFT	3%
		TOTAL = 1,756 SQFT	89%



GLAZING CALCULATIONS - LEFT ELEVATIONS		MATERIAL CALCULATIONS - LEFT ELEVATIONS	
TRANSPARENT GLAZING - 186 SQFT	12%	BRICK 1 - 795 SQFT	56%
SPANDREL GLAZING - 47 SQFT	3%	BRICK 3 - 85 SQFT	5%
TOTAL GLAZING - 233 SQFT	15%	COMPOSITE SIDING - 323 SQFT	20%
		AWNING - 65 SQFT	4%
		TOTAL = 1,375 SQFT	85%



GLAZING CALCULATIONS - RIGHT ELEVATIONS		MATERIAL CALCULATIONS - RIGHT ELEVATIONS	
TRANSPARENT GLAZING - 0 SQFT	0%	BRICK 1 - 297 SQFT	29%
SPANDREL GLAZING - 192 SQFT	14%	BRICK 3 - 183 SQFT	13%
TOTAL GLAZING - 192 SQFT	14%	COMPOSITE SIDING - 586 SQFT	43%
		AWNING - 11 SQFT	1%
		TOTAL = 1,173 SQFT	86%



C#07022 U63FB-R FLY THRU - STORE #7444

E. MAIN STREET
PLAINFIELD, IN 46168





1 FRONT RIGHT VIEW
A0.11



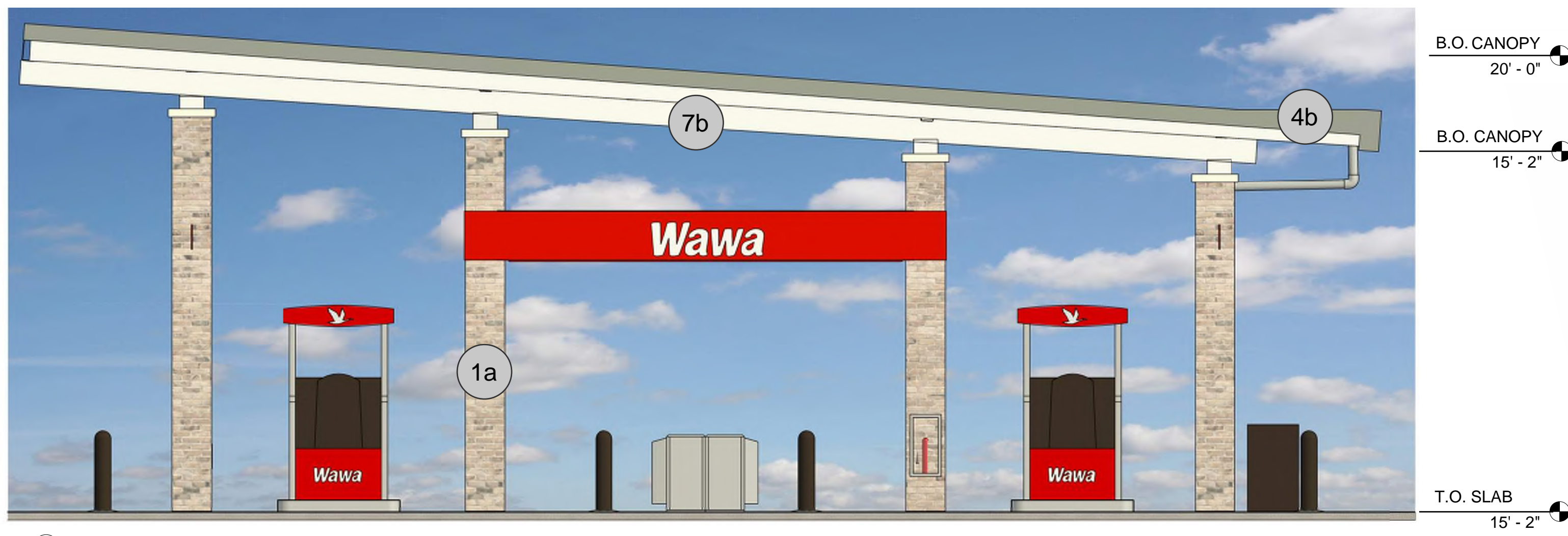
2 FRONT LEFT VIEW
A0.11



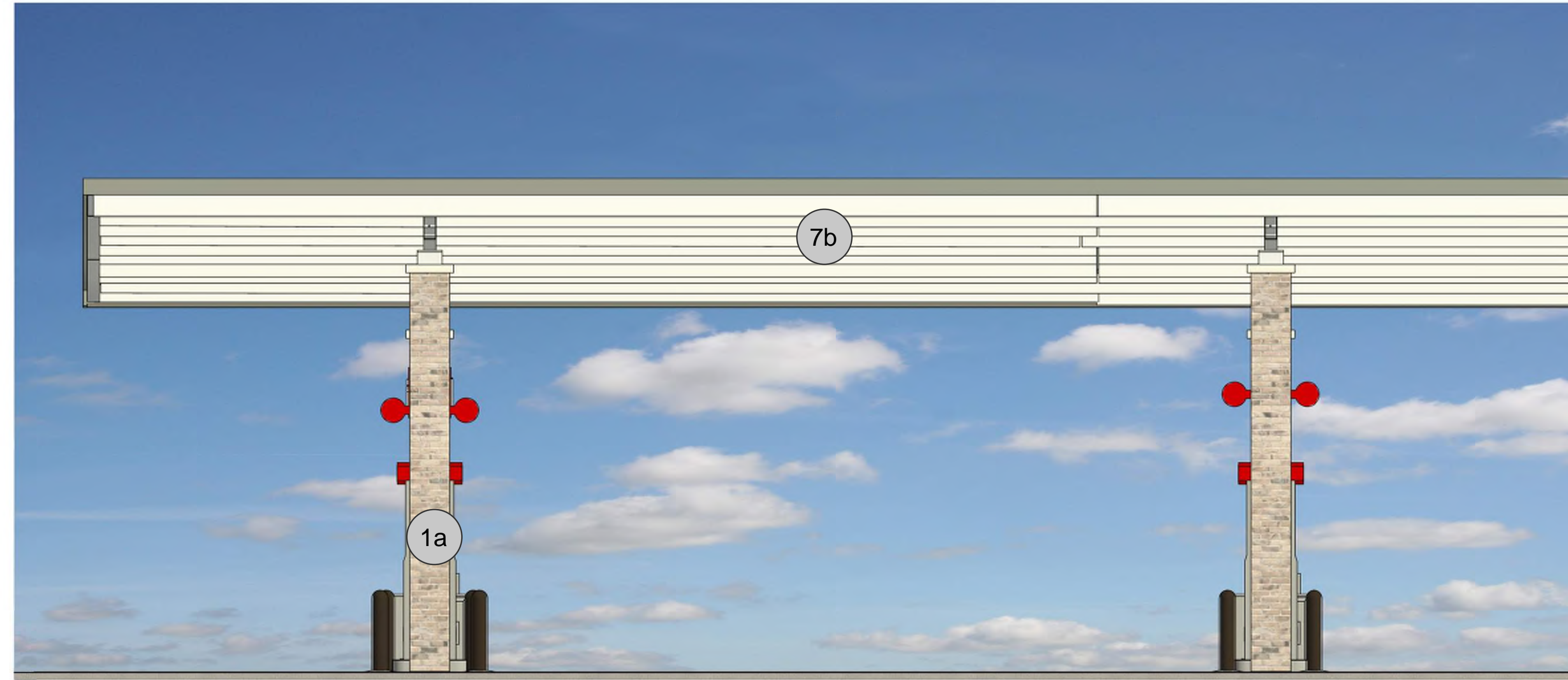
3 REAR LEFT VIEW
A0.11



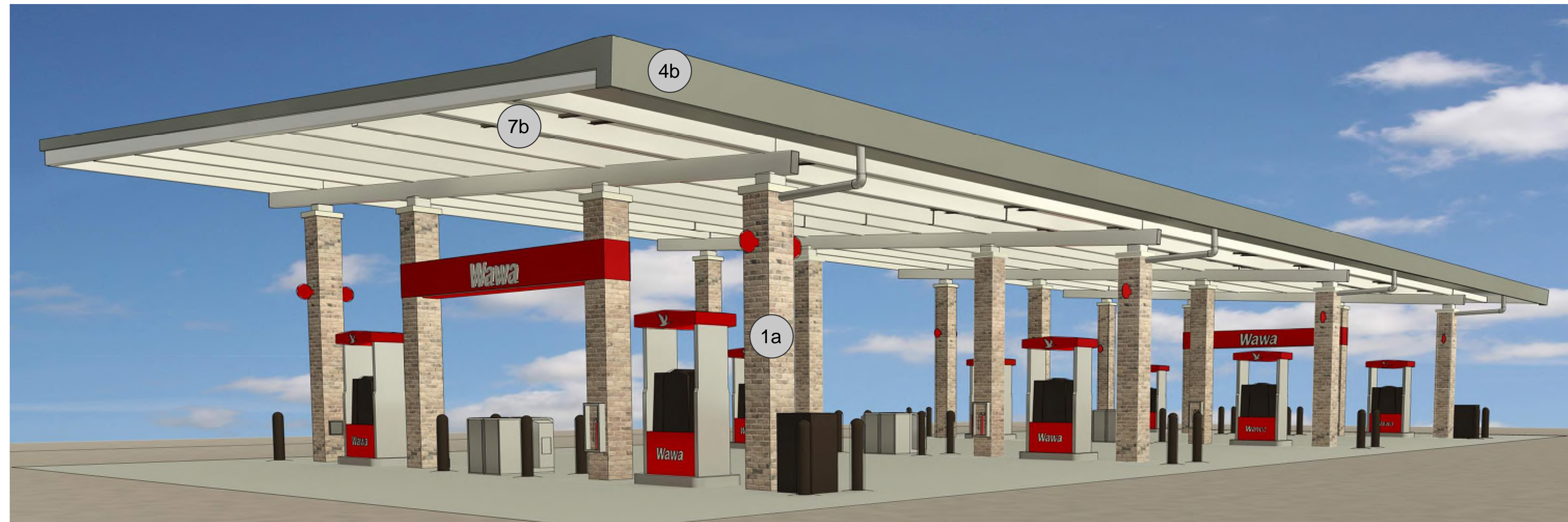
4 REAR RIGHT VIEW
A0.11



③ FUEL CANOPY ELEVATION
1/4" = 1'-0" 1/4" = 1'-0"

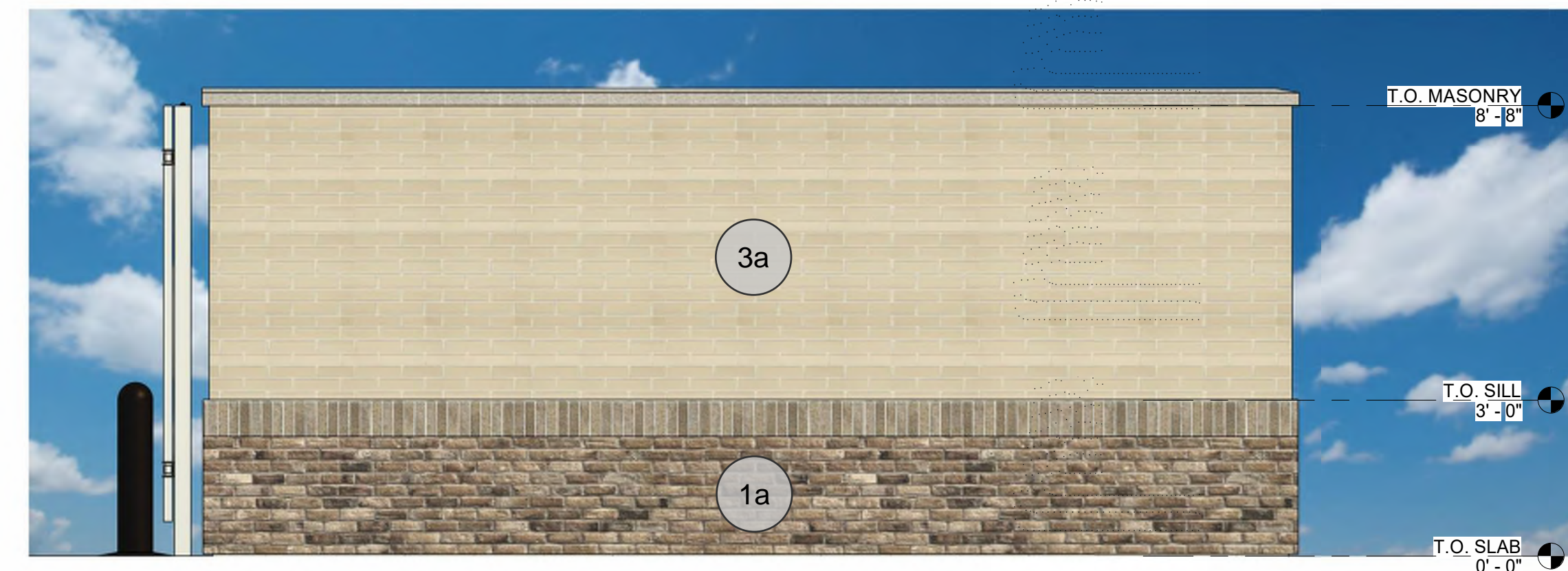


② FUEL CANOPY ELEVATION - LONG
1/4" = 1'-0"

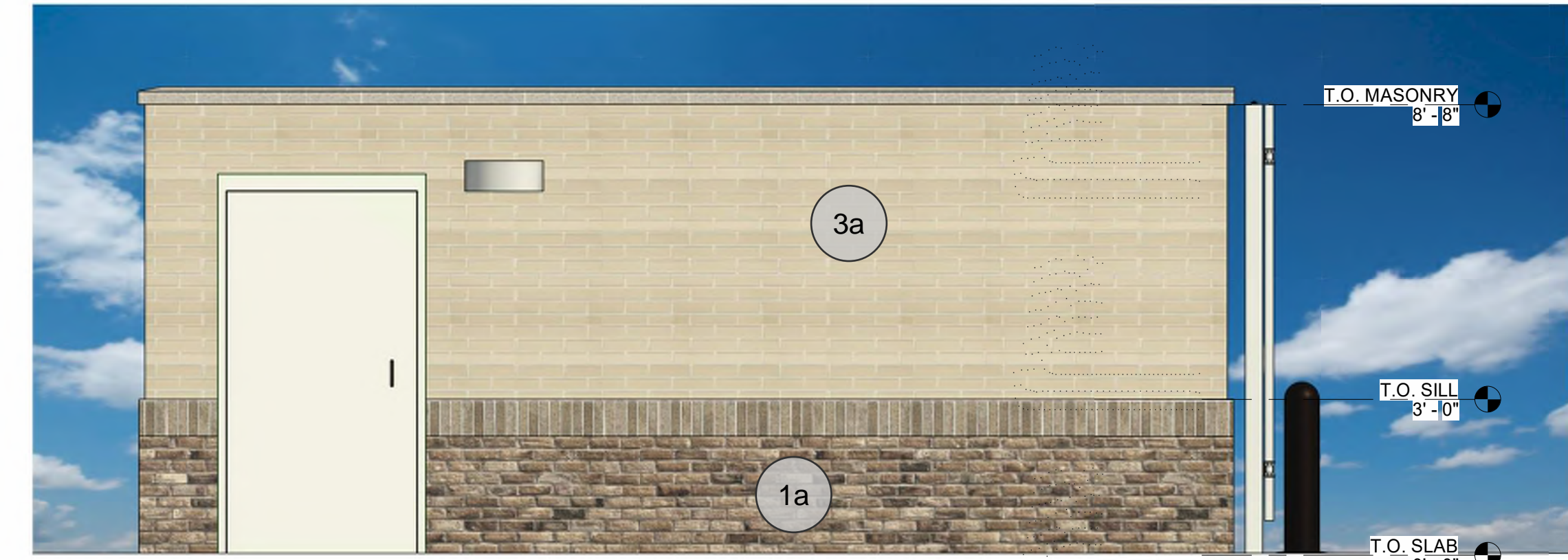


① FUEL CANOPY PERSPECTIVE

MATERIALS:



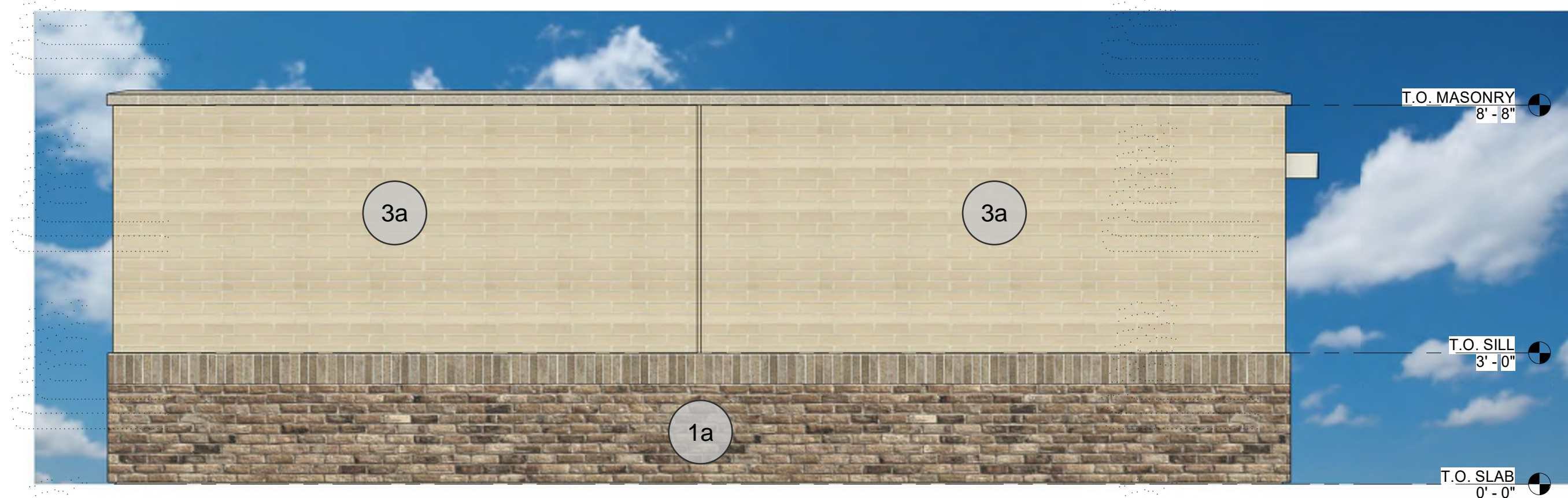
⑦ TRASH COMPOUND SIDE ELEVATION
3/8" = 1'-0"



⑥ TRASH COMPOUND SIDE ELEVATION
3/8" = 1'-0"



⑤ TRASH COMPOUND FRONT ELEVATION
3/8" = 1'-0"



④ TRASH COMPOUND REAR ELEVATION
3/8" = 1'-0"