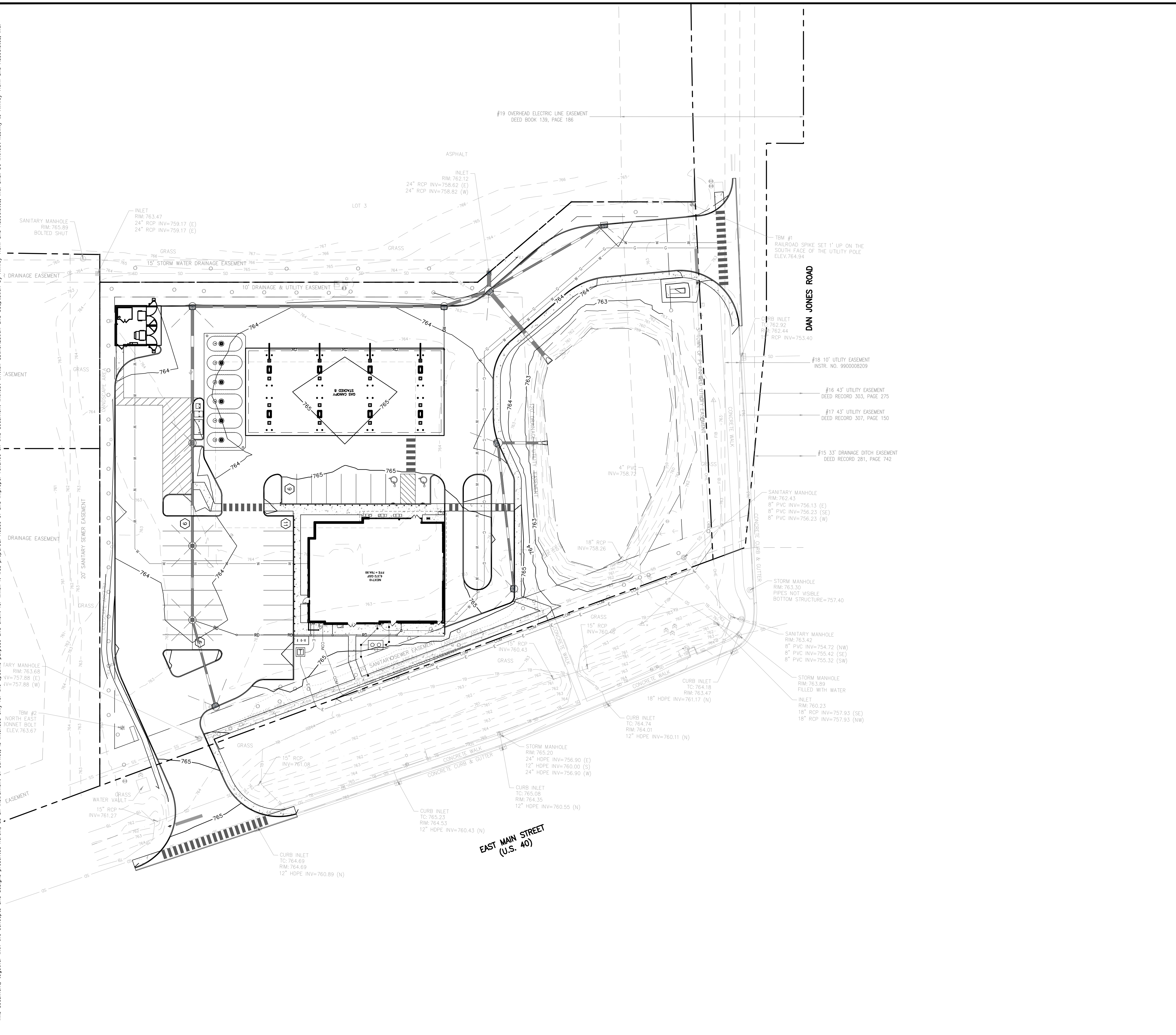


Drawing name: K:\IND\170278002_Bicastorekuretz-Wawa_Plainfield_V12_Design\CADD\PlanSheets\C5.0 - GRADING AND DRAINAGE PLAN.dwg C5.0 Mar 31, 2026 3:04pm by Colin Nicksal
 This document, together with the concepts and designs presented herein, is intended only for the specific purpose and client for which it was prepared. Reuse of and improper reliance on this document without written authorization and adaptation by Kimley-Horn and Associates, Inc. shall be without liability to Kimley-Horn and Associates, Inc.

Indiana Utilities Protection Service
Call 811
 before you dig



GRADING LEGEND

XXX.XX	FINISHED GRADE SPOT ELEVATION
TC XXX.XX BC XXX.XX	TOP OF CURB / BOTTOM OF CURB SPOT ELEVATION
FL XXX.XX	FLOW LINE SPOT ELEVATION
ME XXX.XX	MATCH EXISTING SPOT ELEVATION
FF XXX.XX	FINISHED FLOOR SPOT ELEVATION
FG XXX.XX	FINISHED GRADE NEAR BUILDING SPOT ELEVATION
TW XXX.XX	TOP OF WALL SPOT ELEVATION
BW XXX.XX	BOTTOM OF WALL SPOT ELEVATION
R XXX.XX	RIM ELEVATION
STR XX R XXX.XX STR XX INV XXX.XX	STRUCTURE ID & RIM ELEVATION
620	PROPOSED CONTOUR
—	RIDGE LINE
X XXX	SLOPE AND FLOW DIRECTION
←	100-YEAR OVERLAND OVERFLOW ROUTE
←	DETENTION BASIN 100-YEAR EMERGENCY
←	PROPOSED SWALE
○	PROPOSED STORM SEWER
○	PROPOSED STORM STRUCTURES
○	PROPOSED SANITARY MANHOLE
○	PROPOSED STORM/SANITARY CLEANOUT
○	PROPOSED WATER STRUCTURES
○	PROPOSED LIGHT POLES
○	PROPOSED TRANSFORMER PAD

EXISTING LEGEND

○	BOLLARD	○	MISC LID	○	YARD LIGHT
⊕	CONTROL BENCHMARK	○	MONITOR WELL	○	SANITARY CLEANOUT
⊕	ROW MONUMENT	○	GAS MARKER	○	SANITARY MANHOLE
⊕	FLAG POLE	○	GAS METER	○	VENT PIPE
⊕	MAIL BOX	○	GAS VALVE	○	STORM CURB INLET
○	UTILITY POLE	○	AC UNIT	○	STORM INLET
○	POST	○	AREA LIGHT	○	STORM ROOF DRAIN
○	SOIL BORING	○	ELECTRICAL BOX	○	STORM DRAIN MANHOLE
○	HANDICAP SYMBOL	○	ELECTRICAL HAND HOLE	○	STORM YARD DRAIN
○	SIGN	○	ELECTRICAL METER	○	FIRE HYDRANT
○	CABLE MANHOLE	○	ELECTRICAL MARKER	○	FIRE DEPT CONNECTION
○	CABLE PEDESTAL	○	ELECTRICAL TRANSFORMER	○	POST INDICATOR VALVE
○	TELEPHONE PEDESTAL	○	GUY POLE/WIRE	○	WELL
○	TELEPHONE HAND HOLE	○	POWER POLE	○	WATER METER
○	TELEPHONE MARKER	○	TRAFFIC SIGNAL POLE	○	WATER VALVE
○	TELEPHONE MANHOLE	○	TRAFFIC MANHOLE	○	TREE / STUMP
○	FIBER OPTIC MAKER	○	TOE OF SLOPE		
—	SWALE	—	TS	—	TOE OF SLOPE
—	FENCE LINE	—	TB	—	TOP OF BANK
—	SANITARY SEWER	—	FB	—	UNDERGROUND FIBER OPTIC
—	STORM DRAIN	—	OE	—	OVERHEAD ELECTRICAL
—	WATER LINE	—	GE	—	UNDERGROUND GAS
—	TREE LINE	—	TL	—	UNDERGROUND TELEPHONE

BENCHMARKS

ORIGINATING BENCHMARKS: L61
 1/2 MI SE FORM PLAINFIELD, ABOUT 1.2 MILES ALONG STATE HIGHWAY 267 FROM ITS JUNCTION WITH U.S. HIGHWAY 40 AT PLAINFIELD, AT A CROSS ROAD, 45 FEET WEST OF AND ABOUT LEVEL WITH THE CENTER LINE OF THE HIGHWAY, 26 FEET NORTH OF THE CENTER LINE OF THE ENTRANCE TO THE EDWARD CUMMINGS FARM, 14 FEET NORTHWEST OF THE NORTH END OF A 12 INCH CORRUGATED PIPE CULVERT, 7 FEET WEST OF THE TELEPHONE POLE NO. 36-H 62, 4 FEET WEST OF A CONCRETE FENCE CORNER POST, AND 2 FEET EAST OF A WHITE WOODEN WITNESS POST. A STANDARD DISK, STAMPED L 61 1946 AND SET IN THE TOP OF A CONCRETE POST PROJECTING 8 INCHES ABOVE GROUND. ELEVATION=715.41 (NAVD 88 DATUM).

TEMPORARY BENCHMARKS
 TBM #1 RAILROAD SPIKE SET 1' UP ON THE SOUTH FACE OF THE UTILITY POLE ELEVATION=764.94
 TBM #2 CUT X ON THE NORTH EAST BONNET BOLT ELEVATION=763.67

GENERAL PLAN NOTES

REFER TO GENERAL NOTES SHEET FOR MORE INFORMATION INCLUDING THE FOLLOWING: (EXISTING LEGEND, BENCHMARK INFORMATION, AND SPECIFIC GENERAL PLAN NOTES.)

REVISIONS

NO.	DATE	BY

AS NOTED
 DESIGNED BY: CAN
 DRAWN BY: CAN
 CHECKED BY: CSM

Kimley-Horn
 6020 KIMLEY-HORN AND ASSOCIATES, INC.
 500 EAST 96TH STREET, SUITE 300,
 INDIANAPOLIS, IN 46240
 WWW.KIMLEY-HORN.COM

CHAD STEVEN
 REGISTERED PROFESSIONAL ENGINEER
 NOT APPROVED FOR CONSTRUCTION
 CHAD STEVEN

TRRS
 KENTUCKY

GRADING AND DRAINAGE PLAN

WAWA PLAINFIELD
 1516 EAST MAIN STREET,
 PLAINFIELD, IN 46168

ORIGINAL ISSUE:
 12/26/2025
 KHA PROJECT NO.
 170278002
 SHEET NUMBER
C5.0