

Drawing name: K:\IND\DEV\170278002_Bicostore\urwitz_Wawa_Planfield_V2 Design\CADD\PlanSheets\C3.0-SITE PLAN.dwg C3.0 Mar 31, 2026 2:30pm by Colin Nicaski
 This document, together with the concepts and designs presented herein, is intended only for the specific purpose and client for which it was prepared. Reuse of and improper reliance on this document without written authorization and adaptation by Kimley-Horn and Associates, Inc. shall be without liability to Kimley-Horn and Associates, Inc.

Indiana Utilities Protection Service

Call 811

before you dig

GRAPHIC SCALE IN FEET
0 15' 30' 60'

PAVING LEGEND

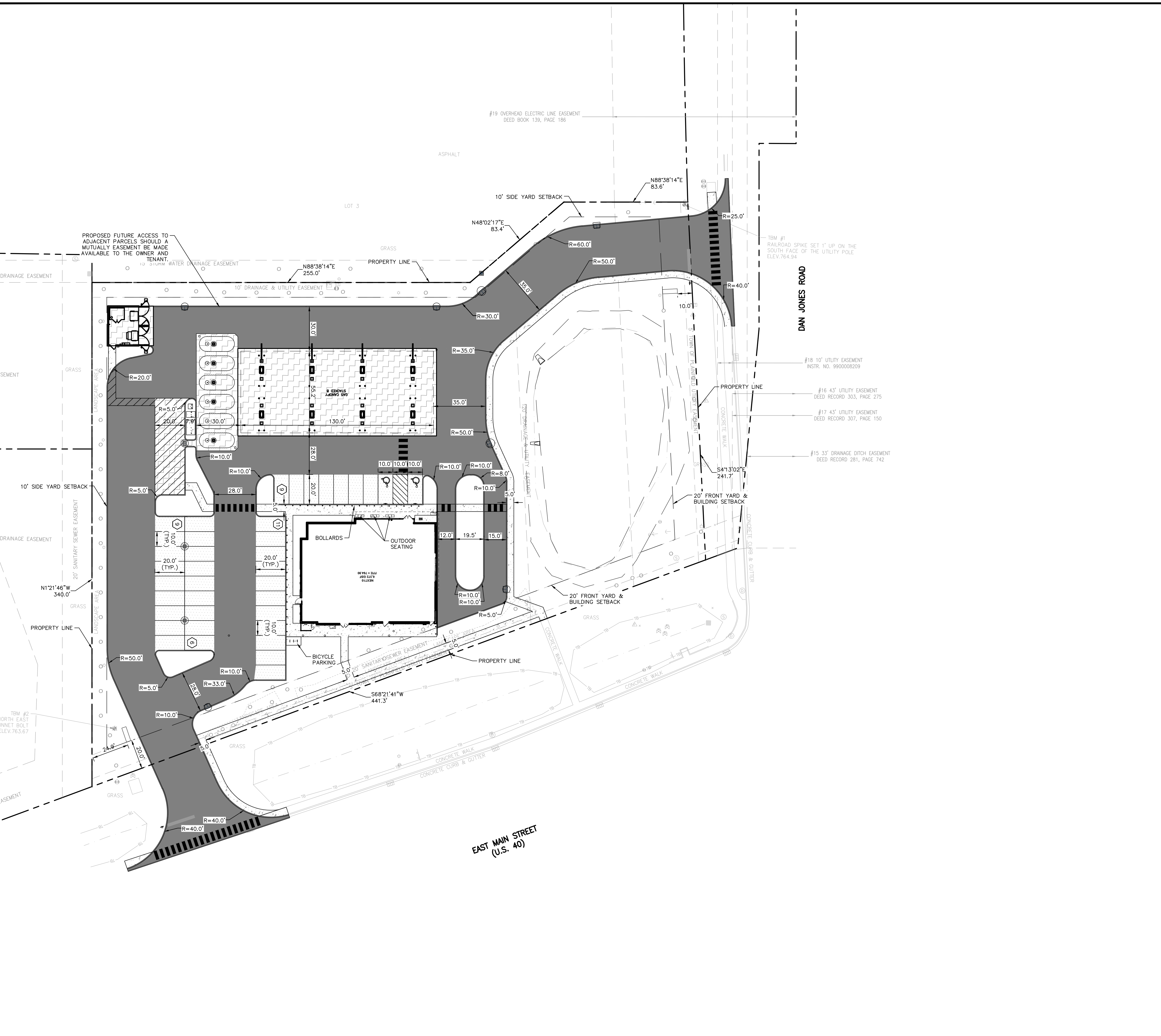
	HEAVY DUTY ASPHALT PAVEMENT SEE CONSTRUCTION DETAILS FOR PAVEMENT SECTION
	RIGHT OF WAY PAVEMENT SEE CONSTRUCTION DETAILS FOR PAVEMENT SECTION
	CONCRETE SIDEWALK SEE CONSTRUCTION DETAILS FOR PAVEMENT SECTION
	HEAVY DUTY CONCRETE PAVEMENT SEE CONSTRUCTION DETAILS FOR PAVEMENT SECTION

SITE SUMMARY

SITE ZONING*	GC
SITE ACREAGE	2.63 AC.±
BUILDING AREA	6,372 SF
PARKING SPACES (STANDARD) REQUIRED**	35 SPACES
PARKING SPACES (ACCESSIBLE) REQUIRED	2 SPACES
PARKING SPACES (BICYCLE) REQUIRED***	5 SPACES
PARKING SPACES (STANDARD) PROVIDED	38 SPACES
PARKING SPACES (ACCESSIBLE) PROVIDED	2 SPACES
TOTAL PARKING SPACES PROVIDED	40 SPACES

*ZONE MAP AMENDMENT BEING PURSUED TO REZONE TO AC
 **MARKET BASED PARKING, PROVIDE JUSTIFICATION FOR NUMBER OF SPACES
 ***1 BICYCLE SPACE PER PUBLIC ACCESS DOOR REQUIRED

 20206 KIMLEY-HORN AND ASSOCIATES, INC. INDIANAPOLIS, IN 46240 WWW.KIMLEY-HORN.COM	AS NOTED DESIGNED BY: CAN DRAWN BY: CAN CHECKED BY: CSM
 CHAD STEVEN HORN REGISTERED PROFESSIONAL ENGINEER INDIANA NO. 12222	 MTRSR KENTUCKY
SITE PLAN	
WAWA PLAINFIELD 1516 EAST MAIN STREET, PLAINFIELD, IN 46168	
ORIGINAL ISSUE: 12/26/2025 KHA PROJECT NO. 170278002 SHEET NUMBER C3.0	



GENERAL PLAN NOTES

REFER TO GENERAL NOTES SHEET FOR MORE INFORMATION INCLUDING THE FOLLOWING: (EXISTING LEGEND, BENCHMARK INFORMATION, AND SPECIFIC GENERAL PLAN NOTES.)