

MATERIAL LEGEND PER SOUTH ELEVATION (A/6.1)				MATERIAL LEGEND PER WEST ELEVATION (A/6.1)			
TAG	MATERIAL	SQFT	PCT.	TAG	MATERIAL	SQFT	PCT.
1A/1B	BRICK	698.1	68%	1A/1B	BRICK	423.39	75%
2	NICHIHA	250.62	24%	2	NICHIHA	99.55	17%
WINDOWS	GLAZING	79.34	8%	DOORS	DOORS	48.35	8%
TOTAL		1028.06	100%	TOTAL		571.29	100%

MATERIAL LEGEND PER NORTH ELEVATION (A/6.1)				MATERIAL LEGEND PER EAST ELEVATION (A/6.1)			
TAG	MATERIAL	SQFT	PCT.	TAG	MATERIAL	SQFT	PCT.
1A/1B	BRICK	934.09	93%	1A/1B	BRICK	278.5	50%
2	NICHIHA	50.92	5%	2	NICHIHA	217.49	39%
WINDOWS	GLAZING	23.77	2%	DOORS	DOORS	56.67	11%
TOTAL		1008.78	100%	TOTAL		552.66	100%

EXTERIOR FINISH SCHEDULE - PROTOTYPICAL w/ CANOPY				
ID TAG	MATERIAL	MANUFACTURER	MODEL	REMARKS
1A	THIN BRICK	GLEN GARY	FACE BRICK - THIN BRICK VENEER MODULAR - 2 1/4" x 1 1/2" x 7 5/8"	COLOR: STONE GRAY KLAYCOAT
1B	THIN BRICK	HEBRON BRICK	FACE BRICK - THIN BRICK VENEER MODULAR - 2 1/4" x 1 1/2" x 7 5/8"	COLOR: SLATE GRAY WIRECUT TEXTURE
2	FIBER CEMENT SIDING	NICHIHA	ILLUMINATION AWP 1818 W/ MATCHING PANEL CORNERS	COLOR: BLDG DB BLUE- PROVIDE 2) ADDITIONAL COATS OF SW DB BLUE PAINT
4	FASCIA	WESTERN STATES METAL ROOFING	T-GROOVE, 10"	3 SIDES; COLOR: BLDG DB DARK GRAY
5	SOFFIT	HEWN ELEMENTS	NATURAL NORTHWESTERN SPRUCE	1x6, T&G, 1/8" REVEAL, SEALED



**ARCHITECT**  
CORALIC, LLC  
9700 MACKENZIE ROAD, STE. 222  
ST. LOUIS, MO 63125

TJ 314.578.4953  
EDIN@CORALICARCHITECTURE.COM

**STRUCTURAL ENGINEER**  
KREHER ENGINEERING, INC.  
208 N. MAIN STREET,  
COLUMBIA, IL 62236

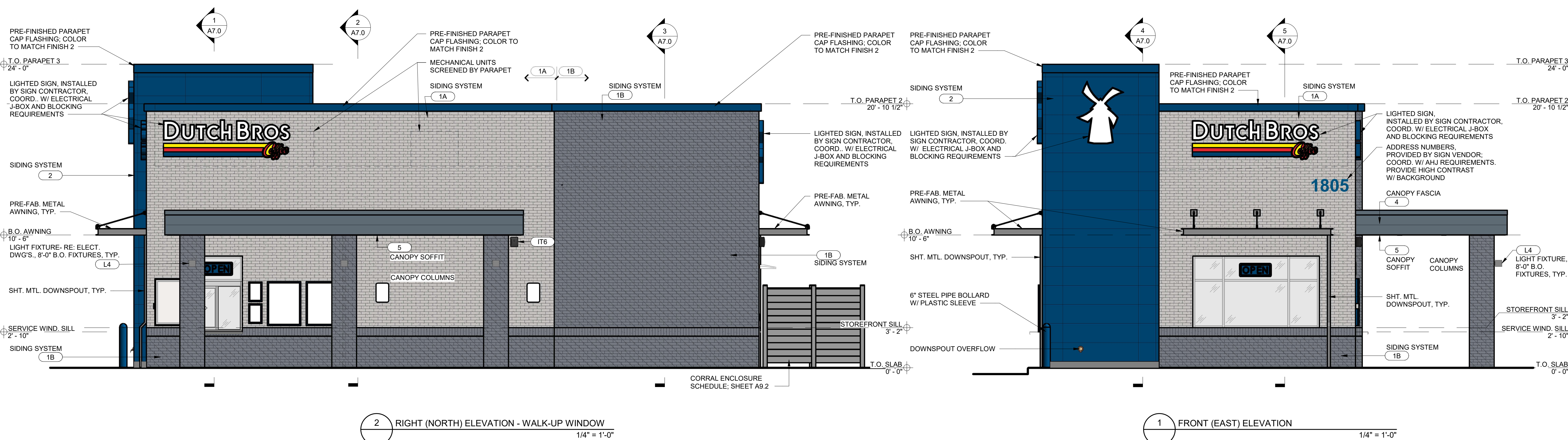
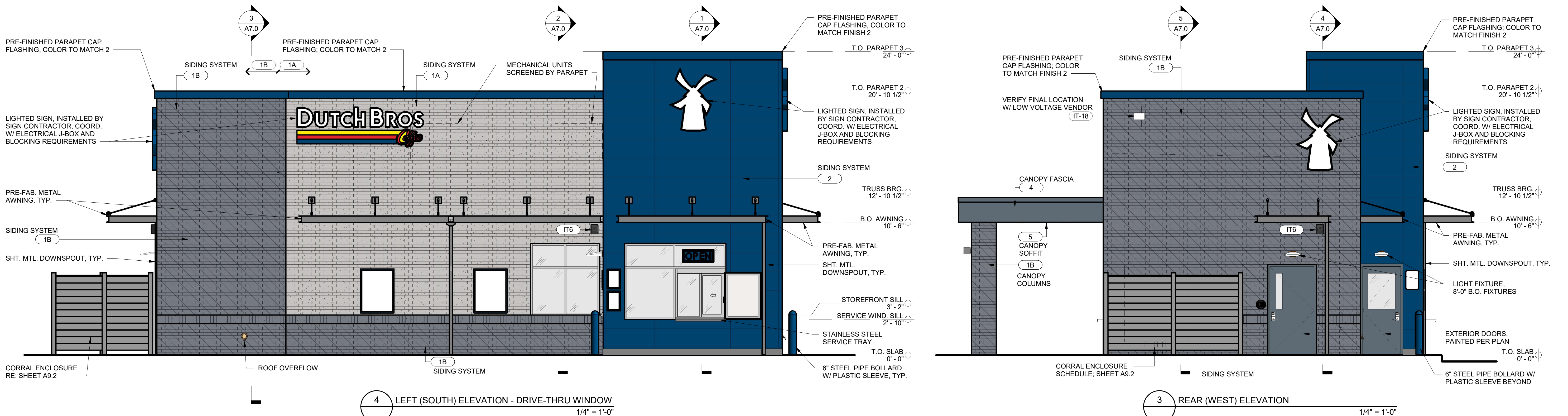
TJ 618.281.8505  
JIMK@KREHERENGINEERING.COM

**MEP ENGINEER**  
CASE ENGINEERING, INC.  
796 MERUS CT.  
FENTON, MO 63026

TJ 636.349.1600  
MCASE@CASEENGINEERINGINC.COM



3.4.2026



**Project No: IN0110**  
Dutch Bros Coffee - New Freestanding Store  
1805 E MAIN ST.  
PLAINFIELD, IN 46168  
For: Dutch Bros Coffee  
Tempe, AZ 85281

ISSUED FOR PERMIT  
3.4.2026

REV.	DATE	DESCRIPTION

SHEET NAME:  
BUILDING ELEVATIONS - COLOR

SHEET NUMBER:

A6.1

© 2025 DB Franchising USA, LLC

The name DUTCH BROS. and all associated logos, distinctive designs, content, information, and other materials featured, contained herein, and made available by Dutch Bros., including but not limited to, the "hook and feet" of the establishments and products, all text, images, colors, configurations, graphics, designs, illustrations, photographs, and pictures (collectively, the "Materials") are owned by and/or licensed by DB Franchising USA, LLC and are protected by copyright, trademark, trade dress, patent, and/or other intellectual property rights and under the laws of the United States and foreign laws.