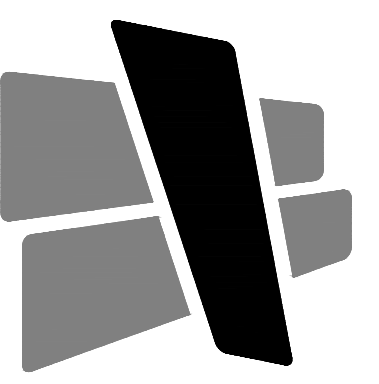


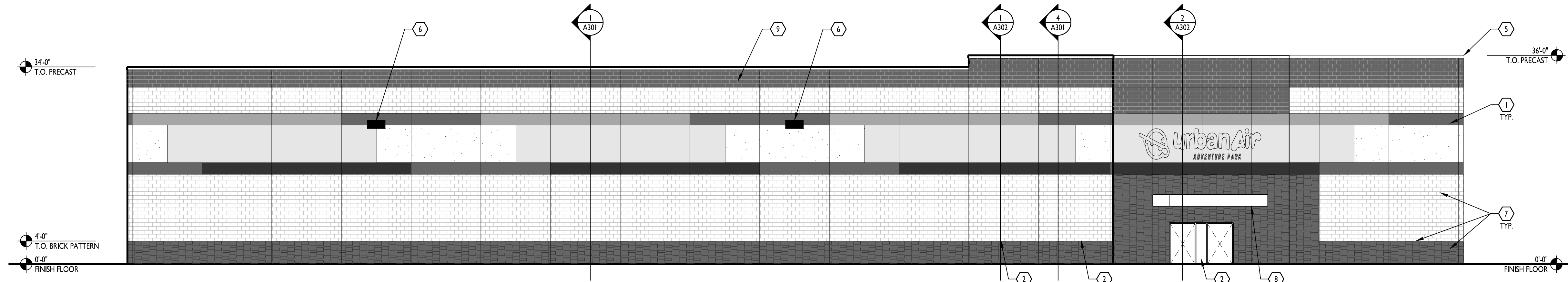
KEYED NOTES

1. PRE-CAST CONCRETE PANEL WITH PAINTED FINISH. REVEALS CAST IN AS SHOWN. REFER TO WALL SECTIONS AND DETAILS FOR ADDITIONAL DETAIL.
2. 1" INSULATED TINTED GLASS IN THERMALLY BROKEN ALUMINUM FRAMING. REFER TO STOREFRONT ELEVATIONS FOR MORE INFORMATION.
3. INSULATED HM MAN-DOOR AD FRAME. PAINTED TO MATCH WALL COLOR.
4. INSULATED STEEL OVERHEAD DOOR, PRE-FINISHED WHITE.
5. PREFINISHED METAL COPING.
6. WALL PACK FIXTURE, CENTER ON WIDTH OF PANEL. HORIZONTALLY AND BETWEEN REVEALS VERTICALLY. REFER TO ELECTRICAL DRAWINGS FOR INFORMATION.
7. TYPICAL REVEAL.
8. CANOPY, REFER TO WALL SECTIONS.
9. OUTLINE OF ROOF SHOWN FOR REFERENCE ONLY.

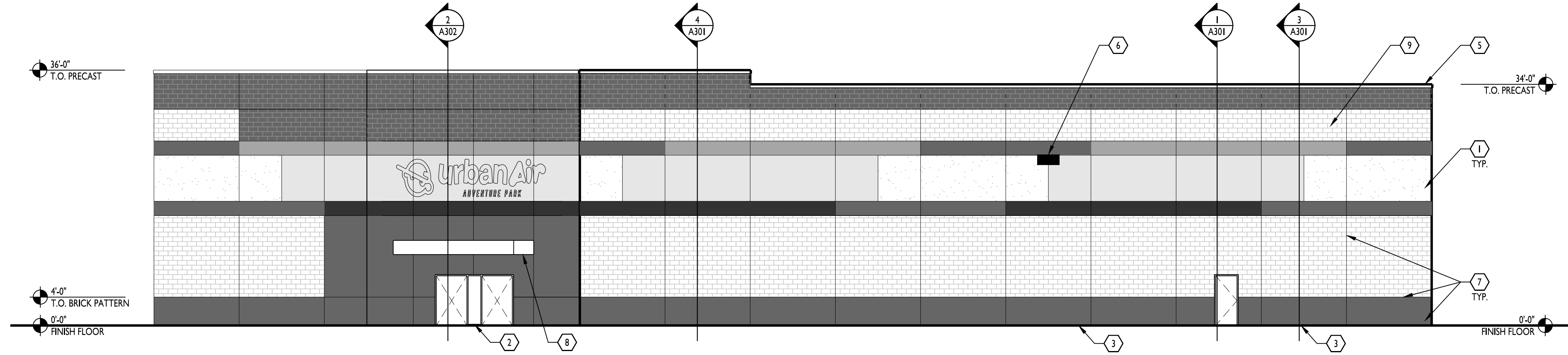


CURRAN
ARCHITECTURE

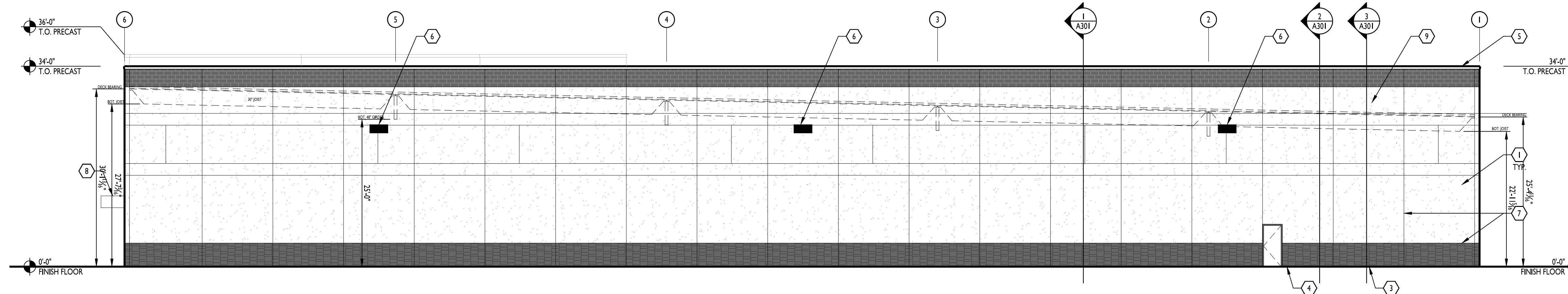
5719 LAWTON LOOP E. DR. #212
INDIANAPOLIS, IN 46216
O :: 317 . 288 . 0681
F :: 317 . 288 . 0753



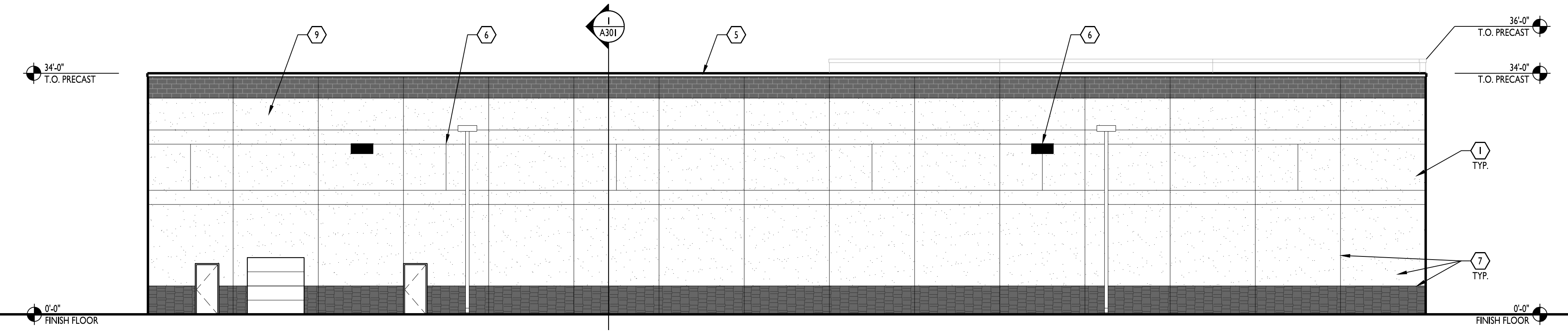
SOUTH ELEVATION 1
3/32"=1'-0"



EAST ELEVATION 2
3/32"=1'-0"



NORTH ELEVATION 3
3/32"=1'-0"



WEST ELEVATION 4
3/32"=1'-0"

CERTIFICATION

PRELIMINARY
NOT FOR CONSTRUCTION

00.00.00

THIS DRAWING AND THE IDEAS, DESIGNS AND CONCEPTS CONTAINED HEREIN ARE THE EXCLUSIVE INTELLECTUAL PROPERTY OF CURRAN ARCHITECTURE, AND ARE NOT TO BE USED OR REPRODUCED, WHOLE OR IN PART, WITHOUT THE WRITTEN CONSENT OF CURRAN ARCHITECTURE.
© COPYRIGHT 2022, CURRAN ARCHITECTURE

PROJECT INFORMATION

URBAN AIR PLAINFIELD

385 S. PERRY ROAD
PLAINFIELD, INDIANA 46168

PAINT COLORS

- PAINT 1 - WHITE
PPG1010-1 PEGASUS
(PPG SPEEDHIDE SEMI-GLOSS)
- PAINT 2 - GREEN/YELLOW
FORMULA: DX-4, GX-9Y, WX-1Y6
PPG SPEEDHIDE EXTERIOR SATIN
(BASE 6-2300X1)
- PAINT 3 - GRAY
PPG1007-6 COOL CHARCOAL
PPG SPEEDHIDE EXTERIOR SATIN
- PAINT 4 - BLUE
PPG1157-6 COSMIC DUST
PPG SPEEDHIDE SEMI-GLOSS
- PAINT 5 - PINK

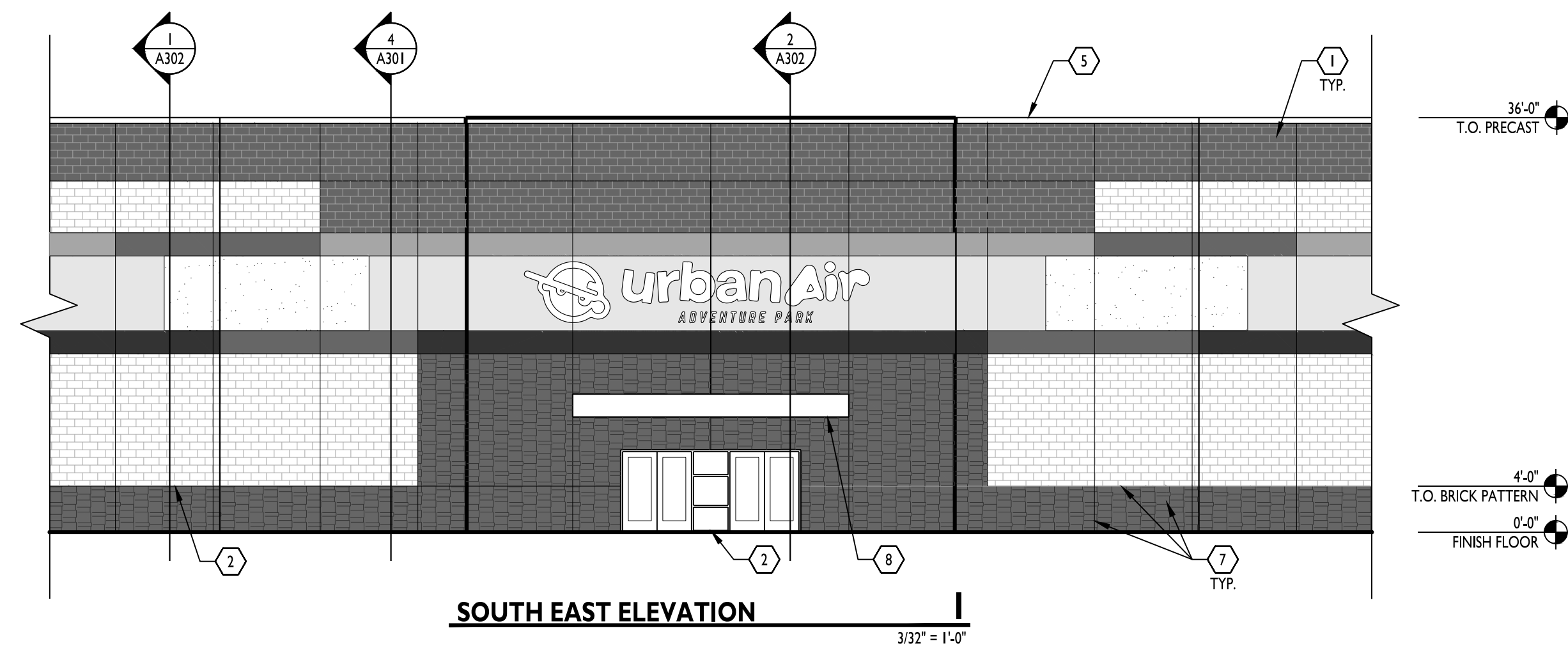
ISSUE DATES

ISSUE	DATE

220232

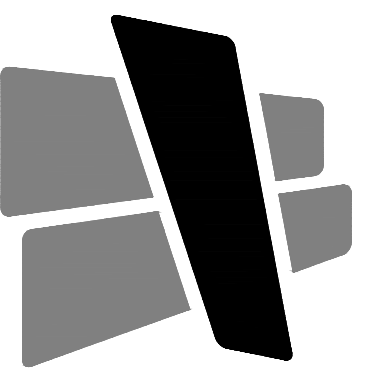
EXTERIOR ELEVATIONS

A201



KEYED NOTES

1. PRE-CAST CONCRETE PANEL WITH PAINTED FINISH. REVEALS CAST IN AS SHOWN. REFER TO WALL SECTIONS AND DETAILS FOR ADDITIONAL DETAIL.
2. 1" INSULATED TINTED GLASS IN THERMALLY BROKEN ALUMINUM FRAMING. REFER TO STOREFRONT ELEVATIONS FOR MORE INFORMATION.
3. INSULATED HM MAN-DOOR AD FRAME. PAINTED TO MATCH WALL COLOR.
4. INSULATED STEEL OVERHEAD DOOR, PRE-FINISHED WHITE.
5. PREFINISHED METAL COPING.
6. WALL PACK FIXTURE, CENTER ON WIDTH OF PANEL. HORIZONTALLY AND BETWEEN REVEALS VERTICALLY. REFER TO ELECTRICAL DRAWINGS FOR INFORMATION.
7. TYPICAL REVEAL.
8. CANOPY, REFER TO WALL SECTIONS.
9. OUTLINE OF ROOF SHOWN FOR REFERENCE ONLY.



CURRAN
ARCHITECTURE

5719 LAWTON LOOP E. DR. #212
INDIANAPOLIS, IN 46216
O :: 317 . 288 . 0681
F :: 317 . 288 . 0753

CERTIFICATION

PRELIMINARY
NOT FOR CONSTRUCTION

00.00.00

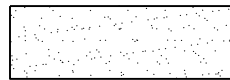



THIS DRAWING AND THE IDEAS, DESIGNS AND CONCEPTS CONTAINED HEREIN ARE THE EXCLUSIVE INTELLECTUAL PROPERTY OF CURRAN ARCHITECTURE, AND ARE NOT TO BE USED OR REPRODUCED, WHOLE OR IN PART, WITHOUT THE WRITTEN CONSENT OF CURRAN ARCHITECTURE.
© COPYRIGHT 2022, CURRAN ARCHITECTURE

PROJECT INFORMATION

URBAN AIR PLAINFIELD

385 S. PERRY ROAD
PLAINFIELD, INDIANA 46168

PAINT COLORS

-  PAINT 1 - WHITE
PPG1010-1 PEGASUS
(PPG SPEEDHIDE SEMI-GLOSS)
-  PAINT 2 - GREEN/YELLOW
FORMULA: DX-4, GX-9Y, WX-1Y6
PPG SPEEDHIDE EXTERIOR SATIN
(BASE 6-2300X1)
-  PAINT 3 - GRAY
PPG1007-6 COOL CHARCOAL
PPG SPEEDHIDE EXTERIOR SATIN
-  PAINT 4 - BLUE
PPG1157-6 COSMIC DUST
PPG SPEEDHIDE SEMI-GLOSS

ISSUE DATES

ISSUE	DATE

220232

EXTERIOR ELEVATIONS

A202