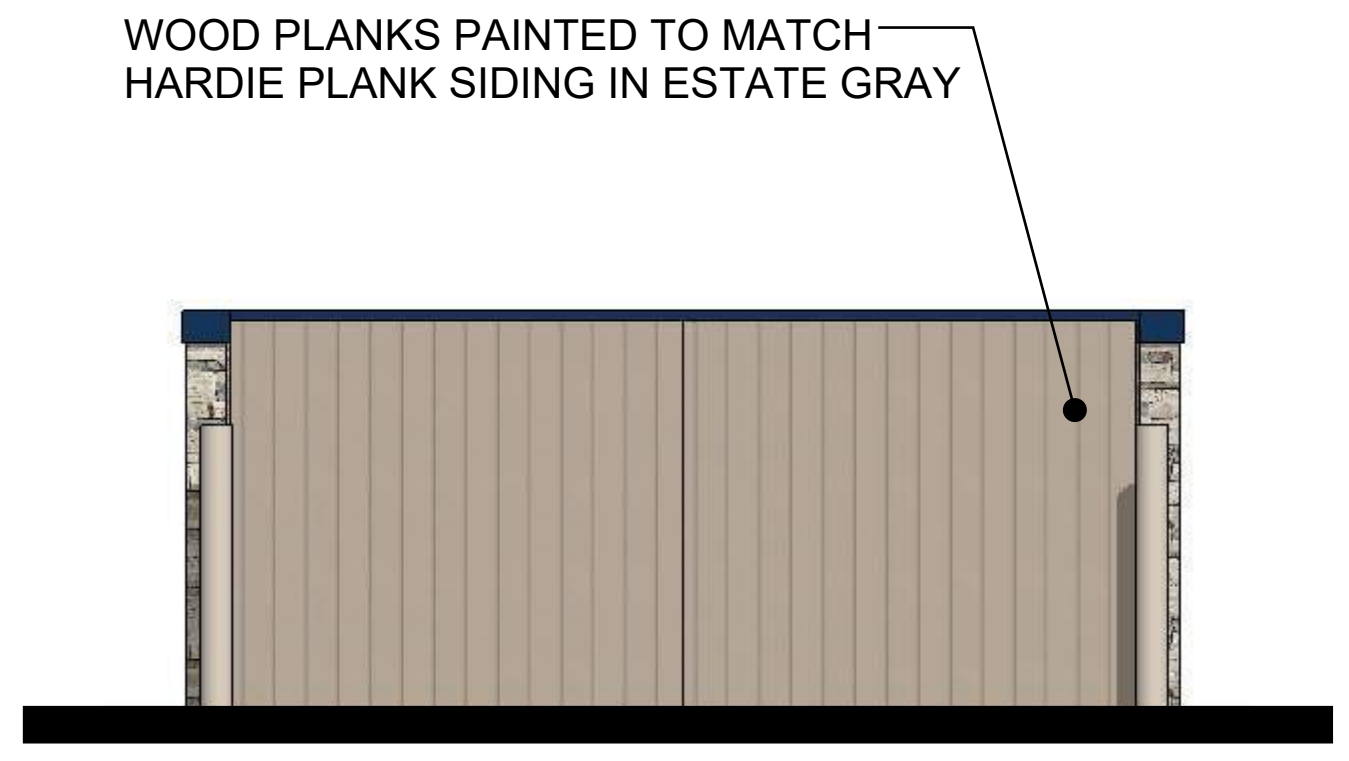


FRONT / SOUTH ELEVATION

SOUTH ELEVATION	Area	% of Facade	Type	FP
CLADDING	360 SF	18.7%	A	37.4
FIBER CEMENT	135 SF	7.0%	P	56
MFGR'D STONE	1,308 SF	68.0%	P	544
GLASS	119 SF	6.2%	P	49.6
<b>FACADE POINT VALUE</b>				<b>744</b>



DETACHED DUMPSTER ENCLOSURE

EAST ELEVATION	Area	% of Facade	Type	FP
CLADDING	270 SF	12.5%	A	25
FIBER CEMENT	960 SF	44.5%	P	356
MFGR'D STONE	773 SF	35.8%	P	286.4
GLASS	155 SF	7.2%	P	57.6
<b>FACADE POINT VALUE</b>				<b>725</b>



MAIN ENTRY / EAST ELEVATION

REPRESENTATION	MATERIAL	COLOR
ROOF EDGE	EXCEPTIONAL METALS	"REGAL BLUE"
ALUM. CLADDING SYSTEM (LONGBOARD)		"GREY DOUGLAS FIR"
CANVAS AWNINGS (BY OTHERS)		"ROYAL BLUE" 4617 SUNBRELLA
HARDIE PLANK SIDING & TRIM BOARDS, SMOOTH FACE		ESTATE GRAY (TRIM BOARDS PAINTED TO MATCH)
MANUFACTURED STONE w/ STONE SILL TRIM		"ECHO RIDGE" CULTURED STONE (WESTLAKE ROYAL STONE)
SCONCE FIXTURES		BRONZE

©2026

**NEW CULVER'S RESTAURANT**  
**5074 GATEWAY DRIVE**  
 Plainfield, IN 46168  
 County of HENDRICKS



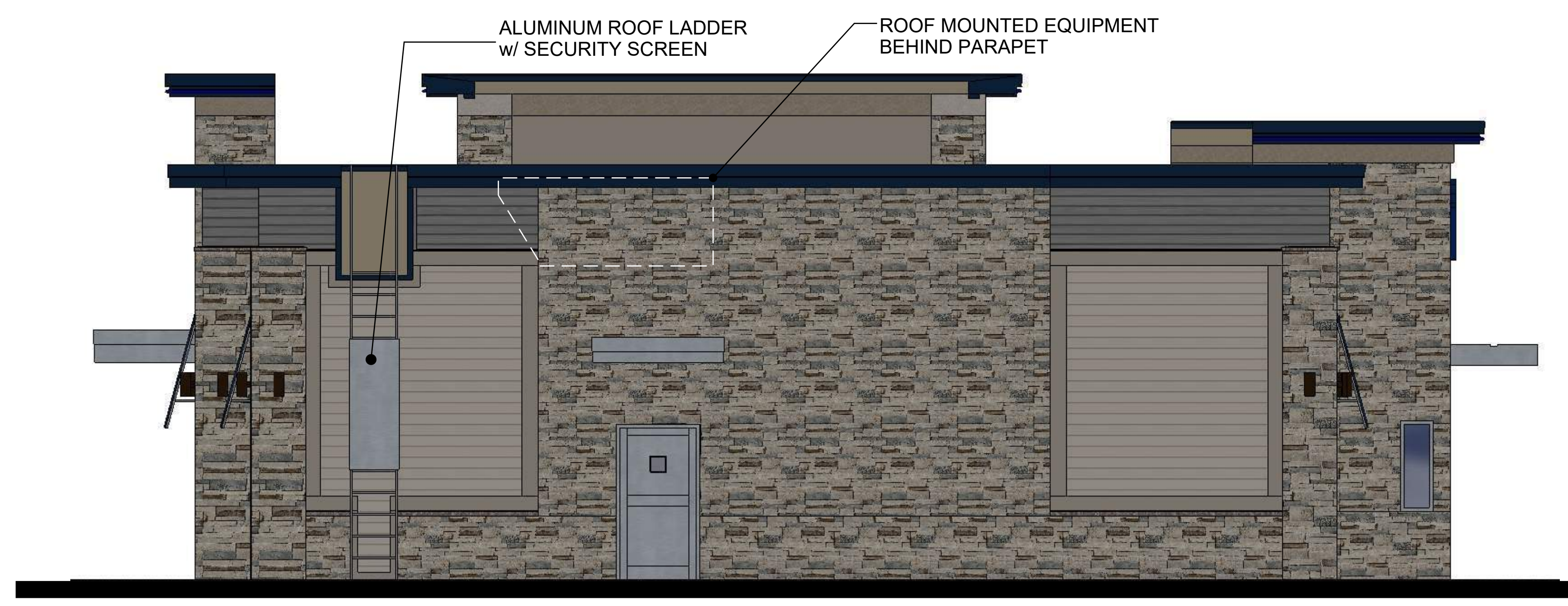
Culver Franchising System, Inc  
 1240 Water Street  
 Prairie du Sac, WI 53578  
 608-643-7960

OLLMANN ASSOCIATES ARCHITECTS  
 200 South State Street  
 Belvidere, Illinois 61008  
 815-544-7790 Phone

**2D ELEVATIONS**  
 NOTE: THOUGH THESE IMAGES HAVE PHOTO REALISTIC QUALITIES, THE ACTUAL BUILDING MATERIALS MAY VARY IN APPEARANCE.  
 Date: 01-13-2026  
 Revision:

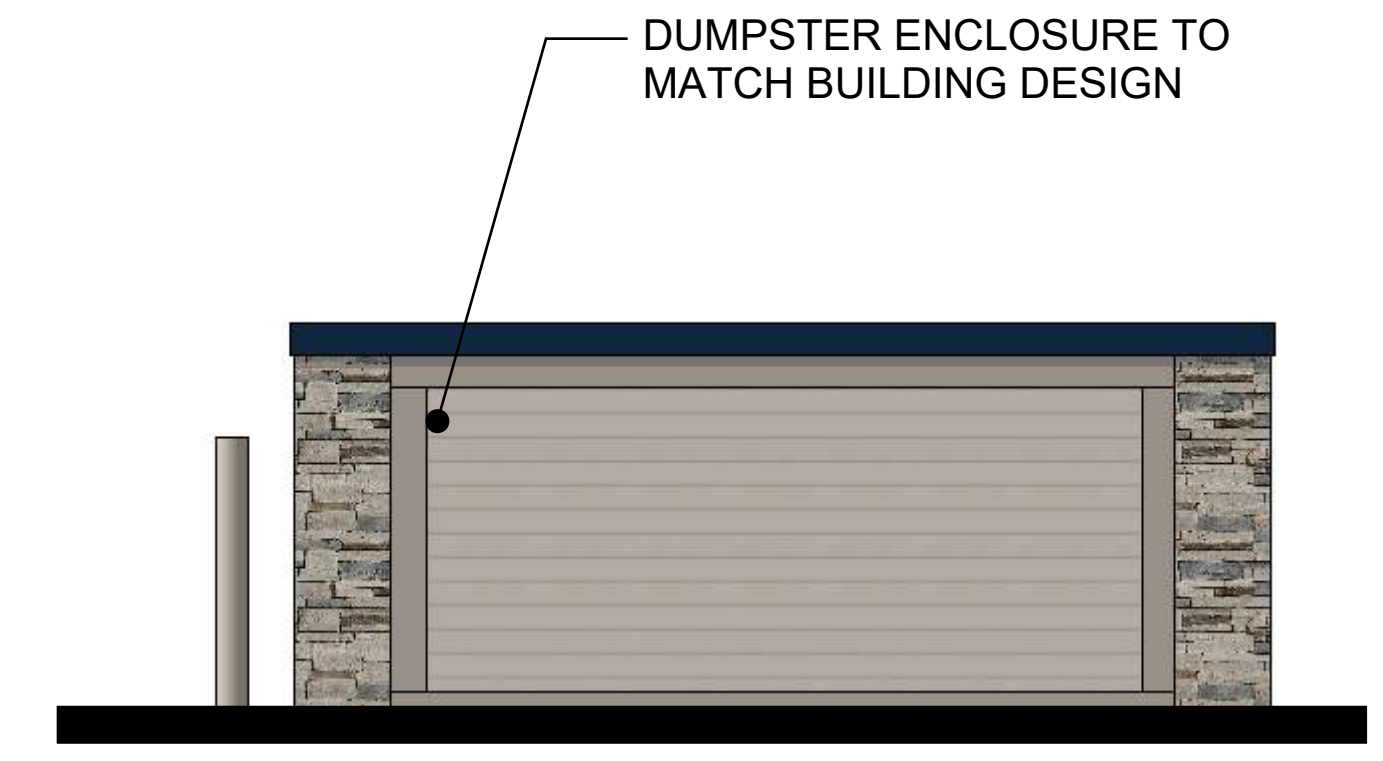
2025-088

A1.1



REAR / NORTH ELEVATION

NORTH ELEVATION	Area	% of Facade	Type	FP
CLADDING	66 SF	5.7%	A	11.4
FIBER CEMENT	464 SF	40.2%	P	321.6
MFGR'D STONE	596 SF	51.6%	P	412.8
GLASS	28 SF	2.5%	P	20
<b>FACADE POINT VALUE</b>				<b>765.8</b>



DETACHED DUMPSTER ENCLOSURE

WEST ELEVATION	Area	% of Facade	Type	FP
CLADDING	270 SF	12.1%	A	24.2
FIBER CEMENT	948 SF	42.4%	P	339.2
MFGR'D STONE	837 SF	37.4%	P	299.2
GLASS	182 SF	8.1%	P	64.8
<b>FACADE POINT VALUE</b>				<b>727.4</b>



DRIVE THRU / WEST ELEVATION



REAR LEFT (NWC) VIEW



REAR RIGHT (NEC) VIEW



FRONT RIGHT (SEC) VIEW

BLUE LED STRIP LIGHTING  
(NON-FLASHING)



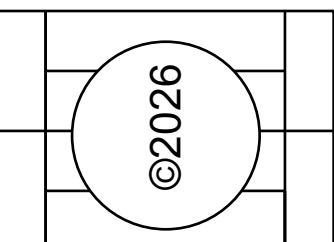
FRONT LEFT (SWC) VIEW

CAN LIGHTING RECESSED  
IN SOFFIT

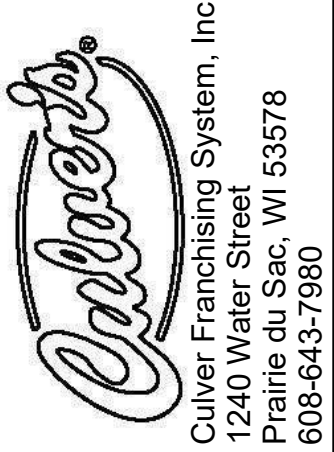


LEFT (WEST) PERSPECTIVE

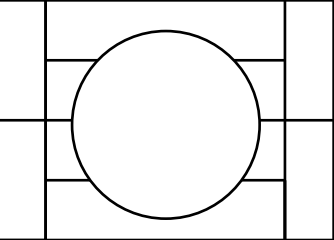
RIGHT (EAST) PERSPECTIVE



NEW CULVER'S RESTAURANT  
5074 GATEWAY DRIVE  
Plainfield, IN 46168  
County of HENDRICKS

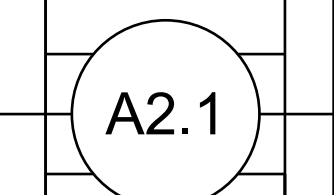


OLLMANN ASSOCIATES ARCHITECTS  
200 South State Street  
Belvidere, Illinois 61008  
815-544-7790 Phone



**3D IMAGES**  
NOTE: THOUGH THESE IMAGES HAVE PHOTO  
REALISTIC QUALITIES, THE ACTUAL BUILDING  
MATERIALS MAY VARY IN APPEARANCE.  
Date: 01-13-2026  
Revision:

2025-088



**URBAN WALL FACADE**



**SWC VIEW FROM STREET PARKING**



**SEC VIEW FROM STREET PARKING**



**LOOKING EAST**



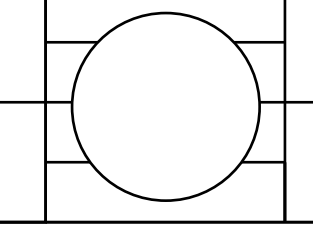
**LOOKING WEST**

©2026

NEW CULVER'S RESTAURANT  
**5074 GATEWAY DRIVE**  
 Plainfield, IN 46168  
 County of HENDRICKS

*Culver's*  
 Culver Franchising System, Inc  
 1240 Water Street  
 Prairie du Sac, WI 53578  
 608-643-7960

OLLMANN ASSOCIATES ARCHITECTS  
 200 South State Street  
 Belvidere, Illinois 61008  
 815-544-7790 Phone



**3D IMAGES**  
 NOTE: THOUGH THESE IMAGES HAVE PHOTO  
 REALISTIC QUALITIES, THE ACTUAL BUILDING  
 MATERIALS MAY VARY IN APPEARANCE.  
 Date: 01-15-2026 Revision:

2025-088

A2.2