



ISSUE FOR PERMIT SET

ISSUE DATE 01/29/25

NO.	REASON	DATE
B	CITY COMMENTS CORR.	02/26/25

PROJECT TEAM
PRINCIPAL IN CHARGE: CHARLES TODD
PROJECT MANAGER: STEVEN GARCIA
CORE PROJECT MANAGER: BETTY LEU

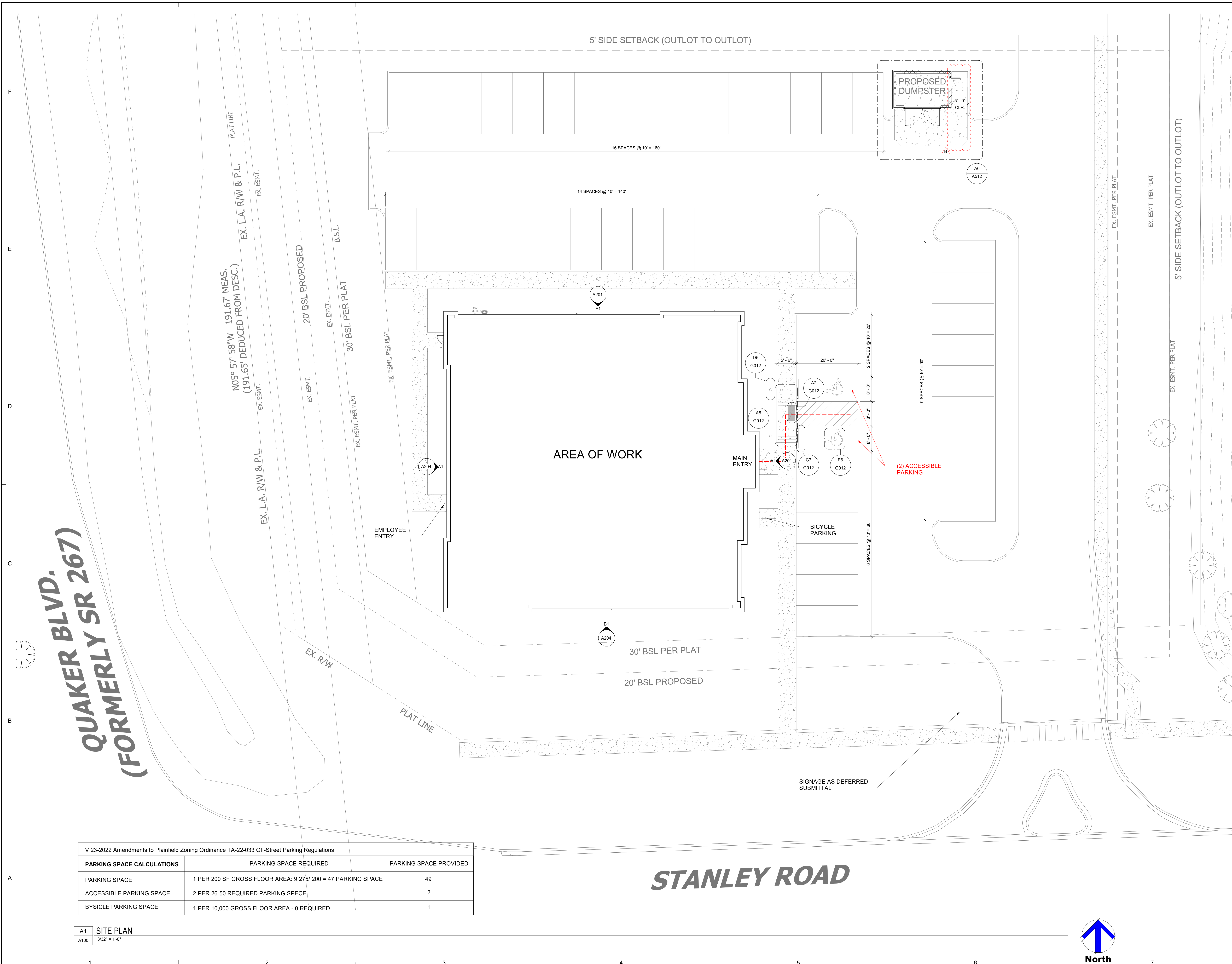
PROJECT NAME: IN PLAINFIELD OPTUM

Location Code: IN 135
UHG #: K1116805
1192 EDWARDS DR
PLAINFIELD, IN 46168
PARCEL #32-10-36-479-005-000-012

PROJECT NO.: 6722159700

SHEET TITLE: SITE PLAN

SHEET NUMBER: A100

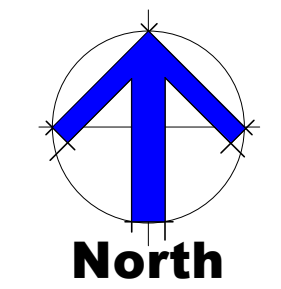


**QUAKER BLVD.
(FORMERLY SR 267)**

V 23-2022 Amendments to Plainfield Zoning Ordinance TA-22-033 Off-Street Parking Regulations		
PARKING SPACE CALCULATIONS	PARKING SPACE REQUIRED	PARKING SPACE PROVIDED
PARKING SPACE	1 PER 200 SF GROSS FLOOR AREA: 9,275 / 200 = 47 PARKING SPACE	49
ACCESSIBLE PARKING SPACE	2 PER 26-50 REQUIRED PARKING SPECE	2
BYSICLE PARKING SPACE	1 PER 10,000 GROSS FLOOR AREA - 0 REQUIRED	1

A1 SITE PLAN
A100 3/32" = 1'-0"

STANLEY ROAD



F
E
D
C
B
A

1 2 3 4 5 6 7



ISSUE FOR PERMIT SET

ISSUE DATE: 01/29/25

NO.	REASON	DATE
A	Addendum A	02/07/25
B	CITY COMMENTS CORR.	02/26/25

PROJECT TEAM	
PRINCIPAL IN CHARGE	CHARLES TODD
PROJECT MANAGER	STEVEN GARCIA
CORE PROJECT MANAGER	BETTY LEU

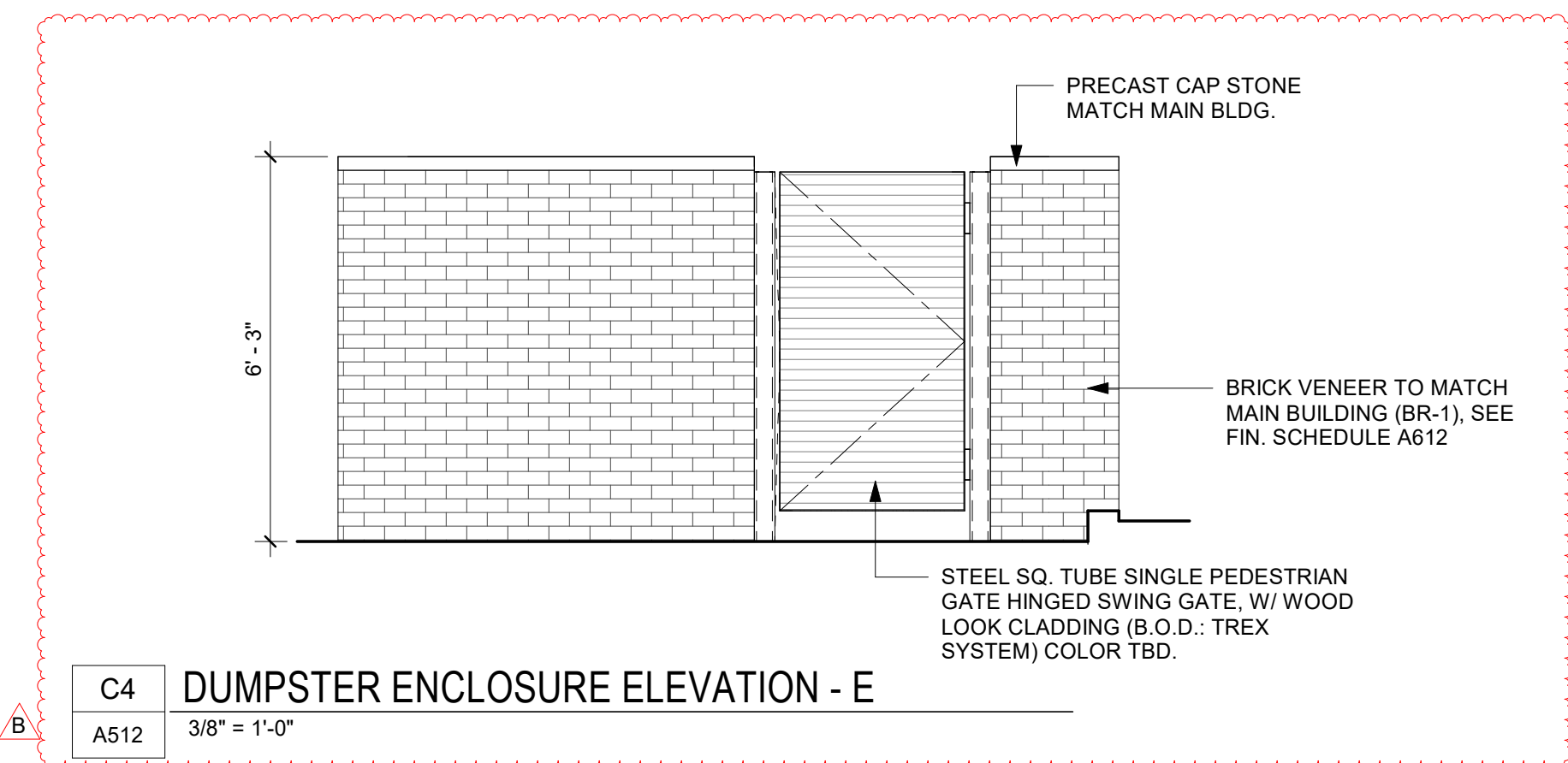
PROJECT NAME: IN PLAINFIELD OPTUM
Location Code: IN 135
UHG #: K1116805
1192 EDWARDS DR.
PLAINFIELD, IN 46168
PARCEL #32-10-36-479-005-000-012

PROJECT NO.: 6722159700

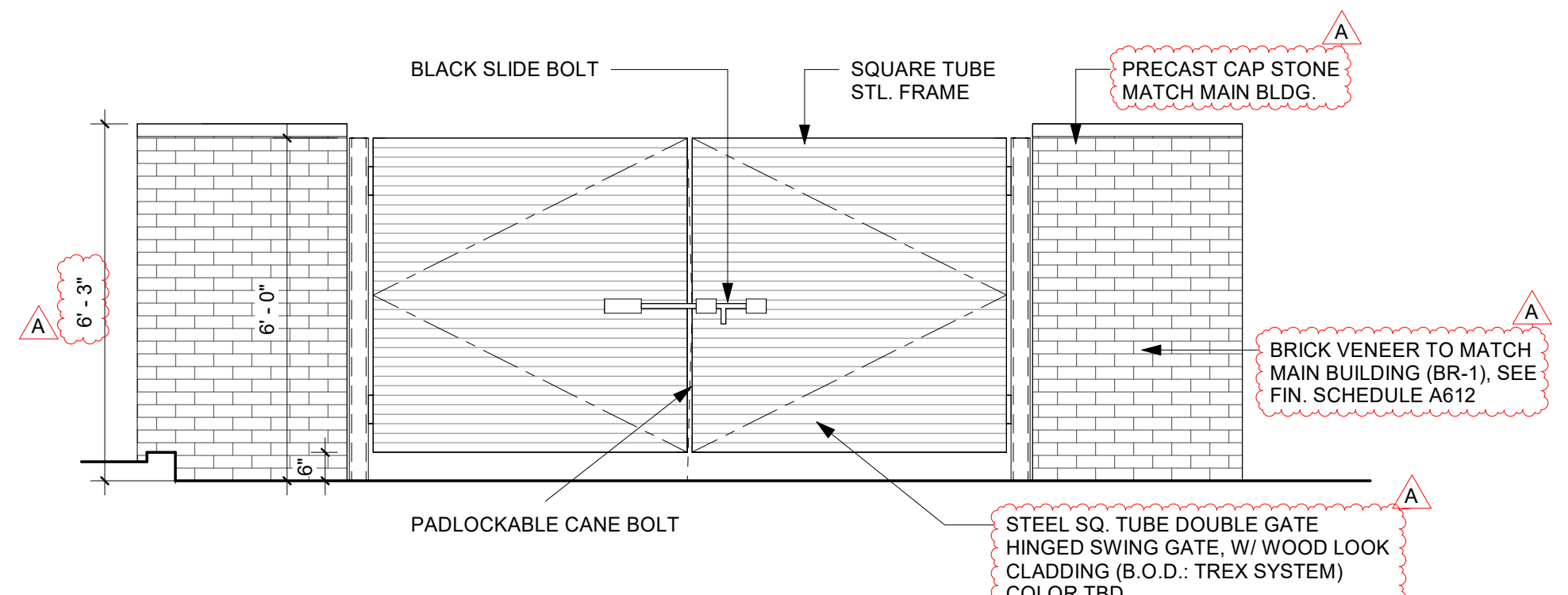
SHEET TITLE: SITE DETAILS

SHEET NUMBER: A512

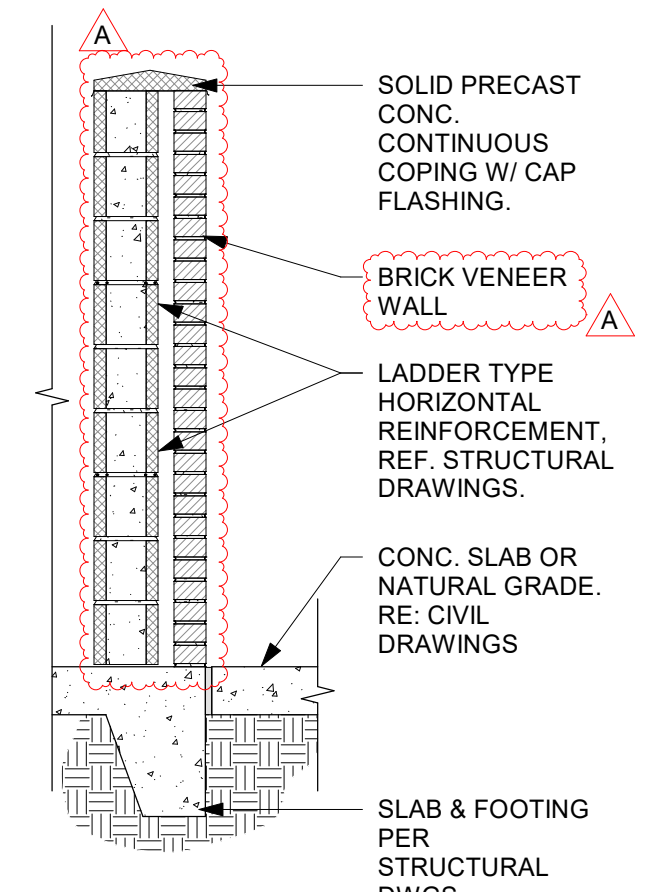
F
E
D
C
B
A



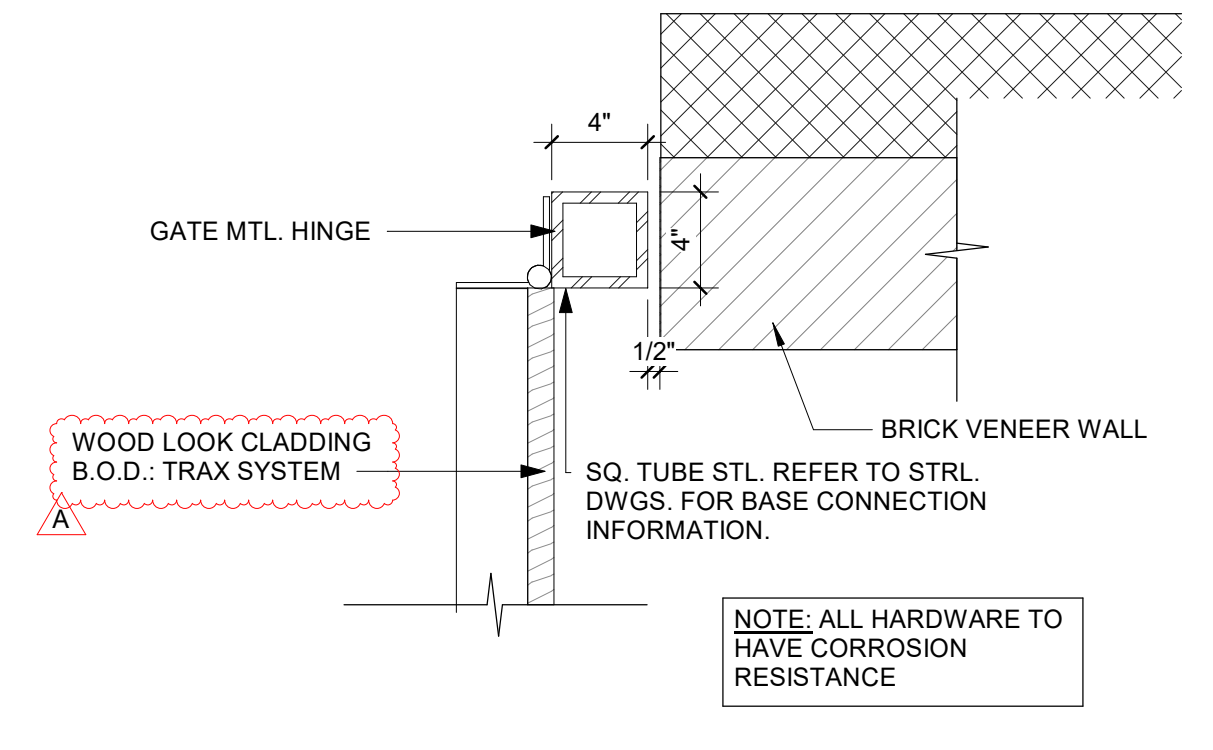
C4 DUMPSTER ENCLOSURE ELEVATION - E
A512 3/8" = 1'-0"



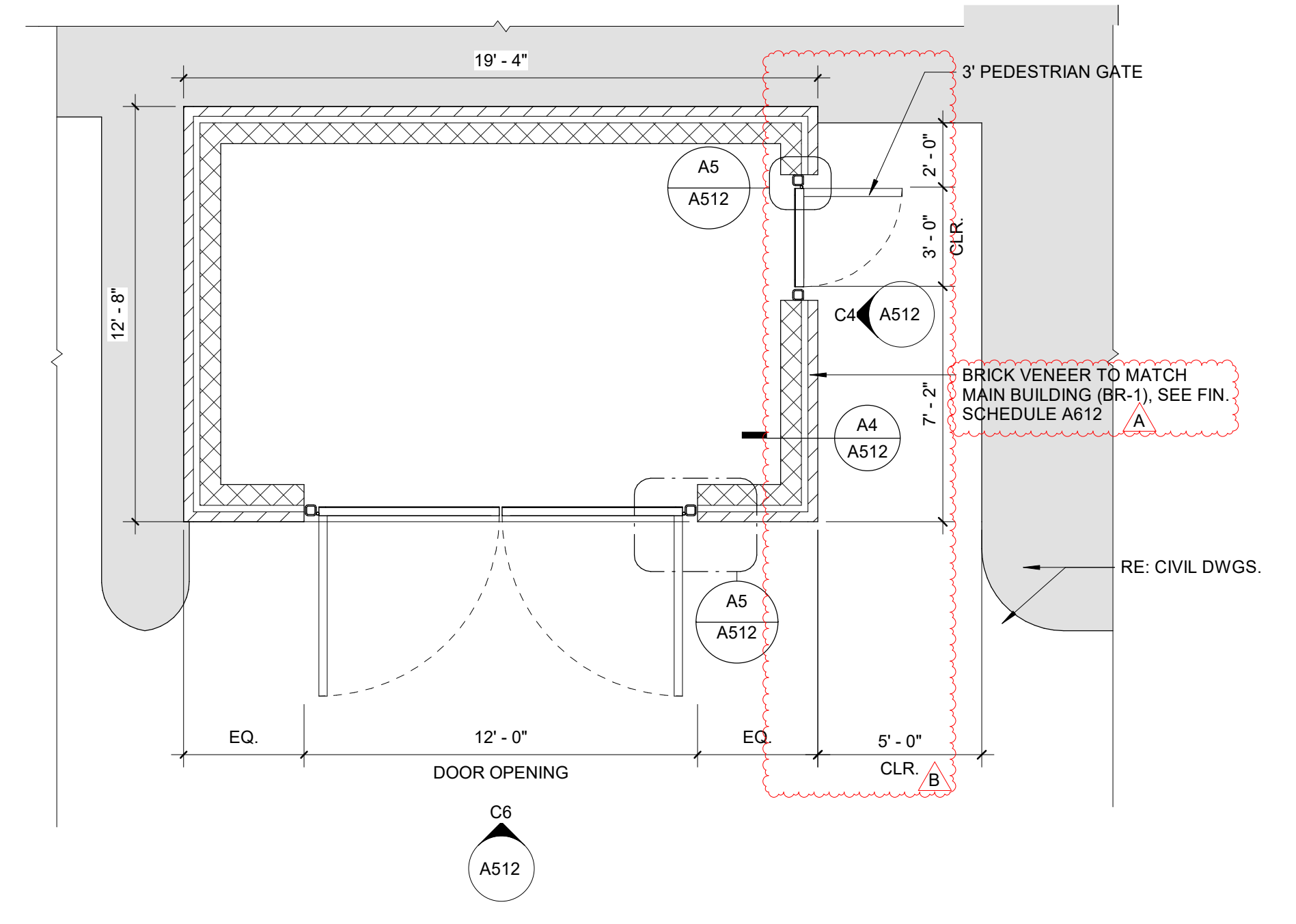
C6 DUMPSTER ENCLOSURE ELEVATION - S
A512 3/8" = 1'-0"



A4 CMU TYP. W/ BRICK VENEER WALL SECTION
A512 1/2" = 1'-0"



A5 ENCLOSURE HINGE DETAIL
A512 1 1/2" = 1'-0"



A6 DUMPSTER ENCLOSURE
A512 1/4" = 1'-0"