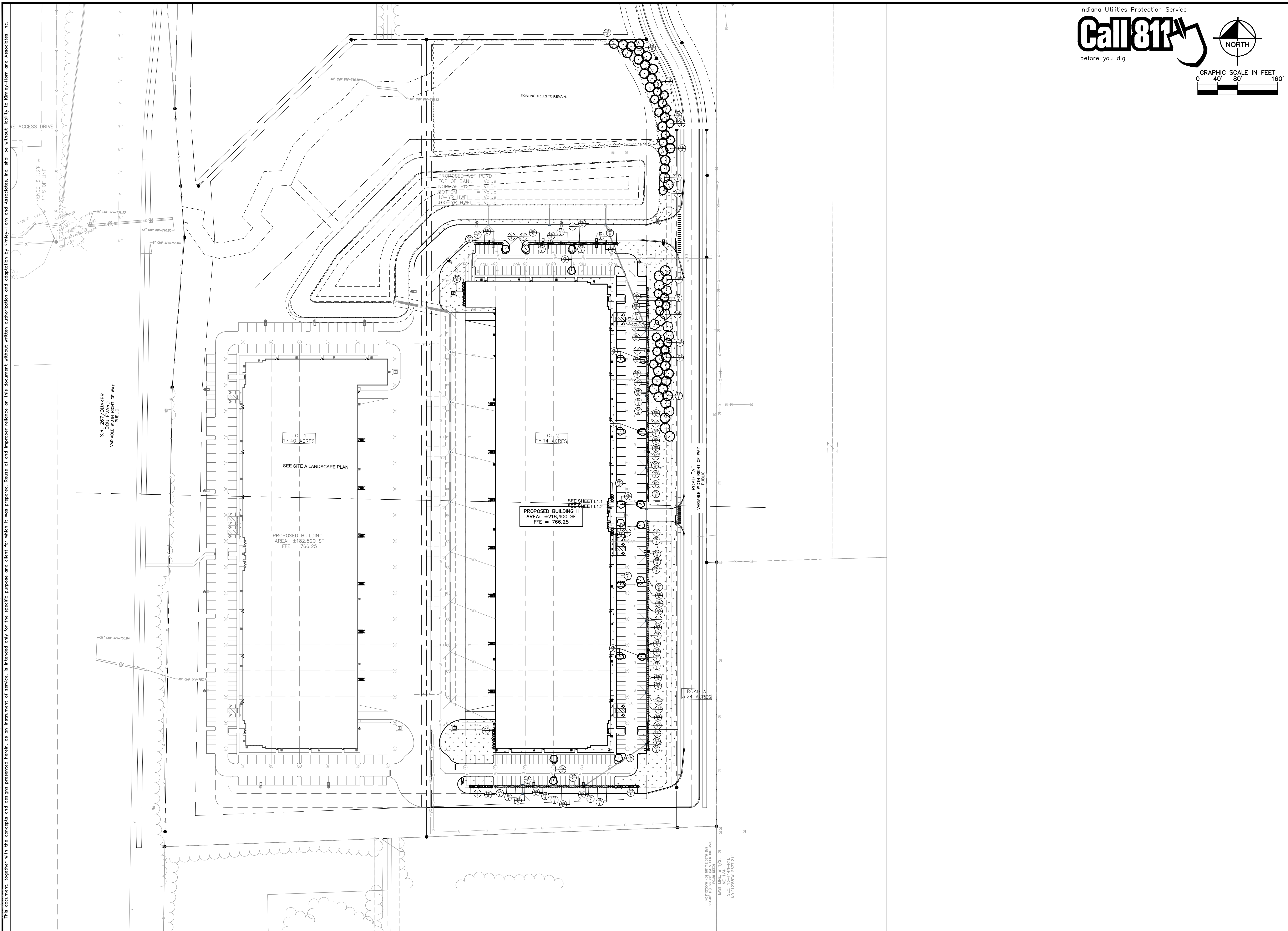




Drawing name: K:\IND_DEV\170008027_Ambrose_jrp_Bldg_IL_Planfiled_IL2_Design\CADD\PlanSheets\L1.0-LANDSCAPE PLAN.dwg L1.0 Aug 15, 2024 1:12pm by Chad Moyes
 This document, together with the concepts and designs presented herein, as an instrument of service, is intended only for the specific purpose and client for which it was prepared. Reuse of and improper reliance on this document without written authorization and approval by Kimley-Horn and Associates, Inc. shall be without liability to Kimley-Horn and Associates, Inc.



Indiana Utilities Protection Service
Call 811
 before you dig

NORTH

GRAPHIC SCALE IN FEET
 0 40' 80' 160'

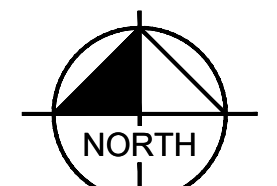
PLAINFIELD INNOVATION PARK - BUILDING II PLAINFIELD, IN	LANDSCAPE PLAN AMBROSE	 <i>Michele Kasper</i>	SCALE: AS NOTED DESIGNED BY: CSM DRAWN BY: CAN CHECKED BY: BAS	 ©2024 KIMLEY-HORN AND ASSOCIATES, INC. 500 EAST 96TH STREET, SUITE 300, INDIANAPOLIS, IN 46240 WWW.KIMLEY-HORN.COM	NO. REVISIONS DATE BY
			ORIGINAL ISSUE: 08/29/2024 KHA PROJECT NO. 170008027 SHEET NUMBER L1.0		

Drawing name: K:\IND_DEV\170008027_Ambrose_Plan\Bldg_IL_Planfiled_IL2_Design\CADD\PlanSheets\110-LANDSCAPE PLAN.dwg L1.1 Aug 15, 2024 1:13pm by: ChadMoyes
 This document, together with the concepts and designs presented herein, is intended only for the specific purpose and client for which it was prepared. Reuse of and improper reliance on this document without written authorization and adaptation by Kimley-Horn and Associates, Inc. shall be without liability to Kimley-Horn and Associates, Inc.

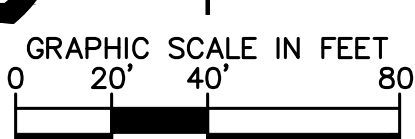
Indiana Utilities Protection Service

Call 811

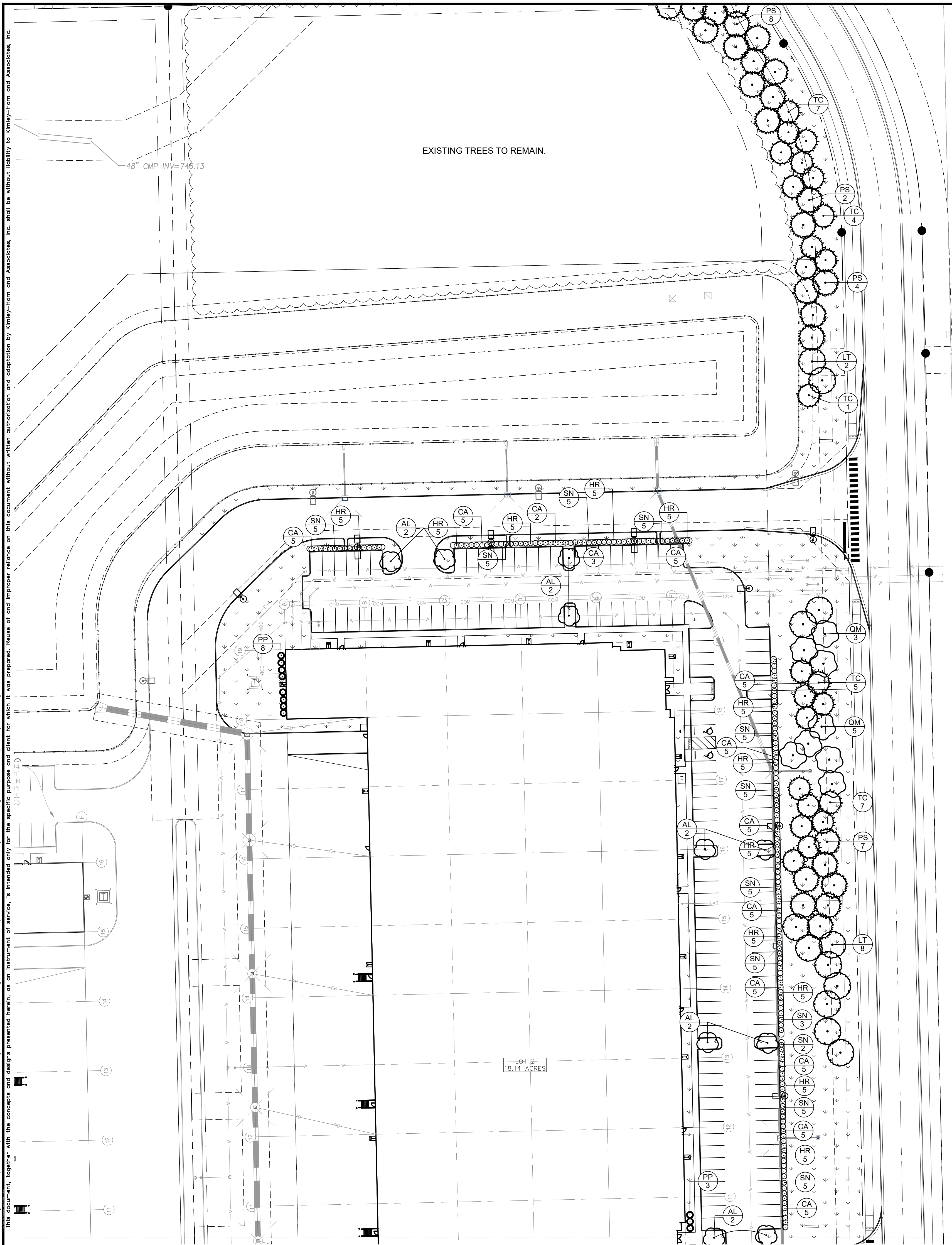
before you dig



NORTH



GRAPHIC SCALE IN FEET


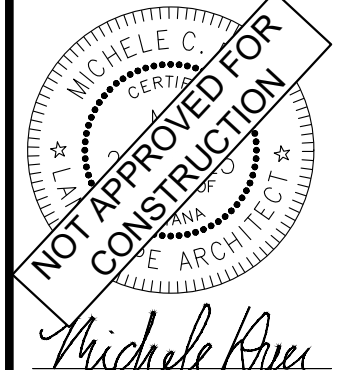


PLANT SCHEDULE

CODE	QTY	BOTANICAL NAME	COMMON NAME	CONT	CAL	HT
DECIDUOUS TREES						
LT	12	LIRIODENDRON TULIPIFERA	TULIP POPLAR	B & B	2.5" CAL MIN	--
QM	8	QUERCUS MACROCARPA	BURR OAK	B & B	2.5" CAL MIN	--
EVERGREEN TREES						
PC	18	PICEA ABIES 'CUPRESSINA'	CUPRESSINA NORWAY SPRUCE	B & B	--	6' HT MIN
PP	22	PLATYCLADUS ORIENTALIS 'DEGROOT'S SPIRE'	DEGROOT'S SPIRE ARBORVITAE	B & B	--	6' HT MIN
PS	26	PINUS STROBUS	WHITE PINE	B & B	--	6' HT MIN
TC	24	TSUGA CANADENSIS	EASTERN HEMLOCK	B & B	--	6' HT MIN
ORNAMENTAL TREES						
AL	19	AMELANCHIER LAEVIS	ALLEGHENY SERVICEBERRY MULTI-TRUNK	B & B	1.5" CAL MIN	--
SHRUBS AND GRASSES						
CA	118	CEANOTHUS AMERICANUS	NEW JERSEY TEA	--	SEE PLAN	24" HT MIN
HR	124	HYDRANGEA PANICULATA 'BOBO'	PANICLE HYDRANGEA	--	SEE PLAN	24" HT MIN
SN	115	SORGHASTRUM NUTANS	INDIAN GRASS	--	SEE PLAN	24" HT MIN

ORDINANCE CHART

ZONING: Promenade of Noblesville PUD / PB - Building B		
REQUIREMENT	REQUIRED	PROVIDED
PERIMETER LANDSCAPING		
North Perimeter: • Level 2 perimeter: Any combination of plants selected from the plant categories listed in Table 4.7-C which equals or exceeds a plant unit value of 2.0 for each 100 lineal feet. East Perimeter: • Level 4 perimeter: Any combination of plants selected from the plant categories listed in Table 4.7-C which equals or exceeds a plant unit value of 4 for each 100 lineal feet. South Perimeter: • Level 4 perimeter: Any combination of plants selected from plant categories listed in Table 4.7-C which equals or exceeds a plant unit value of 4.0 for each 100 lineal feet.	• North Perimeter: 440 LF/100 = 12.2 PUV required. Existing trees to remain. • East Perimeter: 1,483 LF/100 = 59.32 PUV required. Existing trees to remain. • South Perimeter: 502 LF/100 = 20.08 PUV required. Existing trees to remain.	• North Perimeter: 12.75 PUV provided 11 existing trees over 6" cal. = 8.25 PUV 6 evergreen tree 6' high = 2.25 PUV • East Perimeter: 59.75 PUV provided 28 existing trees over 6" cal. = 21 PUV 20 deciduous trees 2.5" cal. = 5 PUV 45 evergreen trees 6' high = 33.75 PUV • South Perimeter: 20.25 PUV provided 9 existing trees over 6" cal. = 6.75 PUV 18 evergreen trees 6' high = 13.5 PUV
FOUNDATION PLANTINGS		
• Front, side, and rear of the Building shall have foundation planting areas. • Foundation planting areas shall maintain a minimum depth of six (6) feet and any combination of plants selected from the Plant Categories listed in Table 4.7-C which equals or exceeds a Plant Unit Value of 1.0 for each one-hundred (100) lineal feet.	• 1,566 LF/100 = 16 PUV required	• 16.5 PUV provided 22 evergreen trees 6' high = 16.5 PUV
PARKING LOT INTERIOR		
• All new surface lots shall include at least one interior landscape island with one deciduous tree, ornamental tree, or evergreen tree per island.	• 18 interior islands = 18 deciduous, ornamental, or evergreen trees required minimum	• 18 ornamental trees provided.
PARKING LOT PERIMETER		
• A compact hedge row planted 3' o.c. and between twenty-four and thirty inches in height at the time of planting.	• Compact hedge row planted 3 o.c. between front yard and edge of parking.	• Compact hedge rows planted 3' o.c. provided.

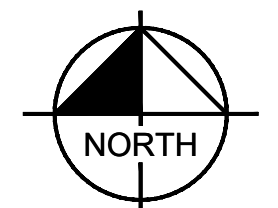
NO.	DATE	BY
 <p style="font-size: small;"> 2024 KIMLEY-HORN AND ASSOCIATES, INC. 500 EAST 96TH STREET, SUITE 300, INDIANAPOLIS, IN 46240 WWW.KIMLEY-HORN.COM </p>		
SCALE:	AS NOTED	DESIGNED BY: CSM
DRAWN BY:	CAN	CHECKED BY: BAS
 <p style="text-align: center;">NOT APPROVED FOR CONSTRUCTION FOR ARCHITECT</p> <p style="text-align: center;"><i>Michelle Rye</i></p>		
LANDSCAPE PLAN - AMBROSE		
PLAINFIELD INNOVATION PARK - BUILDING II LANDSCAPE PLAN - BUILDING II, IN		
ORIGINAL ISSUE: 08/29/2024 KHA PROJECT NO. 170008027 SHEET NUMBER L1.1		

Drawing name: K:\IND_DEV\170008027_Ambrose_Bldg_IL_Planfiled_INV2_Design\CADD\PlanSheets\110-LANDSCAPE PLAN.dwg L1.2 Aug 15, 2024 11:10am by Chad Moyes
 This document, together with the concepts and designs presented herein, is intended only for the specific purpose and client for which it was prepared. Reuse of and improper reliance on this document without written authorization and adaptation by Kimley-Horn and Associates, Inc. shall be without liability to Kimley-Horn and Associates, Inc.

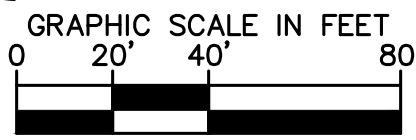
Indiana Utilities Protection Service

Call 811

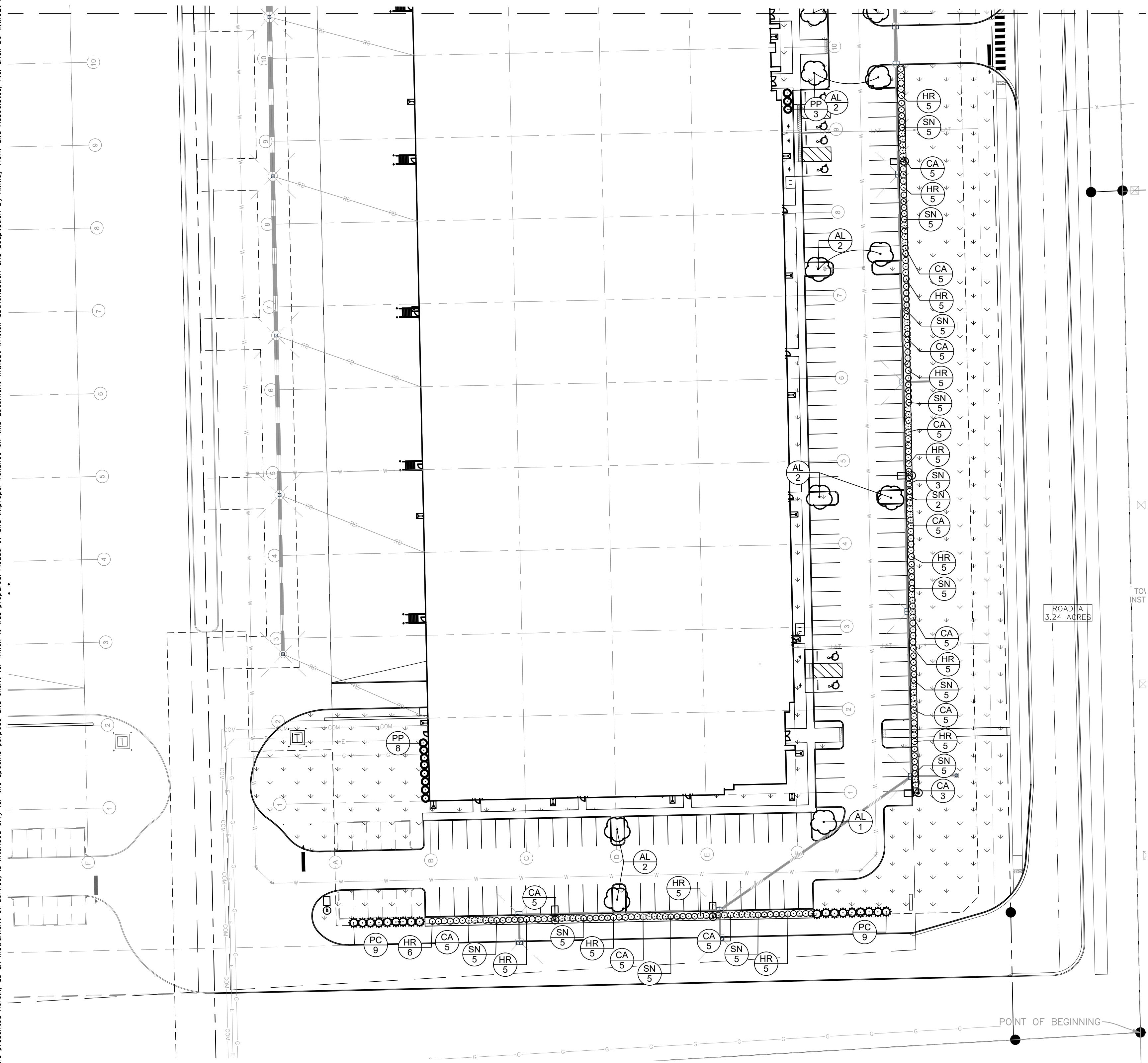
before you dig



NORTH



GRAPHIC SCALE IN FEET





PLANT SCHEDULE

CODE	QTY	BOTANICAL NAME	COMMON NAME	CONT	CAL	HT
DECIDUOUS TREES						
LT	12	LIRIODENDRON TULIPIFERA	TULIP POPLAR	B & B	2.5" CAL MIN	--
QM	8	QUERCUS MACROCARPA	BURR OAK	B & B	2.5" CAL MIN	--
EVERGREEN TREES						
PC	18	PICEA ABIES 'CUPRESSINA'	CUPRESSINA NORWAY SPRUCE	B & B	--	6' HT MIN
PP	22	PLATYCLADUS ORIENTALIS 'DEGROOT'S SPIRE'	DEGROOT'S SPIRE ARBORVITAE	B & B	--	6' HT MIN
PS	26	PINUS STROBUS	WHITE PINE	B & B	--	6' HT MIN
TC	24	TSUGA CANADENSIS	EASTERN HEMLOCK	B & B	--	6' HT MIN
ORNAMENTAL TREES						
AL	19	AMELANCHIER LAEVIS	ALLEGHENY SERVICEBERRY MULTI-TRUNK	B & B	1.5" CAL MIN	--
SHRUBS AND GRASSES						
CA	118	CEANOTHUS AMERICANUS	NEW JERSEY TEA	--	SEE PLAN	24" HT MIN
HR	124	HYDRANGEA PANICULATA 'BOBO'	PANICLE HYDRANGEA	--	SEE PLAN	24" HT MIN
SN	115	SORGHASTRUM NUTANS	INDIAN GRASS	--	SEE PLAN	24" HT MIN

ORDINANCE CHART

ZONING: Promenade of Noblesville PUD / PB - Building B		
REQUIREMENT	REQUIRED	PROVIDED
PERIMETER LANDSCAPING		
North Perimeter: • Level 2 perimeter: Any combination of plants selected from the plant categories listed in Table 4.7-C which equals or exceeds a plant unit value of 2.0 for each 100 lineal feet.	• North Perimeter: 440 LF/100 = 12.2 PUV required. Existing trees to remain.	• North Perimeter: 12.75 PUV provided 11 existing trees over 6" cal. = 8.25 PUV 6 evergreen tree 6' high = 2.25 PUV
East Perimeter: • Level 4 perimeter: Any combination of plants selected from the plant categories listed in Table 4.7-C which equals or exceeds a plant unit value of 4 for each 100 lineal feet.	• East Perimeter: 1,483 LF/100 = 59.32 PUV required. Existing trees to remain.	• East Perimeter: 59.75 PUV provided 28 existing trees over 6" cal. = 21 PUV 20 deciduous trees 2.5" cal. = 5 PUV 45 evergreen trees 6' high = 33.75 PUV
South Perimeter: • Level 4 perimeter: Any combination of plants selected from the plant categories listed in Table 4.7-C which equals or exceeds a plant unit value of 4.0 for each 100 lineal feet.	• South Perimeter: 502 LF/100 = 20.08 PUV required. Existing trees to remain.	• South Perimeter: 20.25 PUV provided 9 existing trees over 6" cal. = 6.75 PUV 18 evergreen trees 6' high = 13.5 PUV
FOUNDATION PLANTINGS		
• Front, side, and rear of the Building shall have foundation planting areas. • Foundation planting areas shall maintain a minimum depth of six (6) feet and any combination of plants selected from the Plant Categories listed in Table 4.7-C which equals or exceeds a Plant Unit Value of 1.0 for each one-hundred (100) lineal feet.	• 1,566 LF/100 = 16 PUV required	• 16.5 PUV provided 22 evergreen trees 6' high = 16.5 PUV
PARKING LOT INTERIOR		
• All new surface lots shall include at least one interior landscape island with one deciduous tree, ornamental tree, or evergreen tree per island.	• 18 interior islands = 18 deciduous, ornamental, or evergreen trees required minimum	• 18 ornamental trees provided.
PARKING LOT PERIMETER		
• A compact hedge row planted 3' o.c. and between twenty-four and thirty inches in height at the time of planting.	• Compact hedge row planted 3 o.c. between front yard and edge of parking.	• Compact hedge rows planted 3' o.c. provided.

 <p>Kimley-Horn <small>©2024 KIMLEY-HORN AND ASSOCIATES, INC. 500 EAST 96TH STREET, SUITE 300, INDIANAPOLIS, IN 46240 WWW.KIMLEY-HORN.COM</small></p>	<p>AS NOTED DESIGNED BY: CSM DRAWN BY: CAN CHECKED BY: BAS</p>
 <p>NOT APPROVED FOR CONSTRUCTION MICHELLE C. AMBROSE ARCHITECT</p>	<p>AMBROSE</p>
<p>PLAINFIELD INNOVATION PARK - BUILDING II PLAINFIELD, IN</p>	<p>LANDSCAPE PLAN</p>
<p>ORIGINAL ISSUE: 08/29/2024 KHA PROJECT NO. 170008027</p>	<p>SHEET NUMBER L1.2</p>

