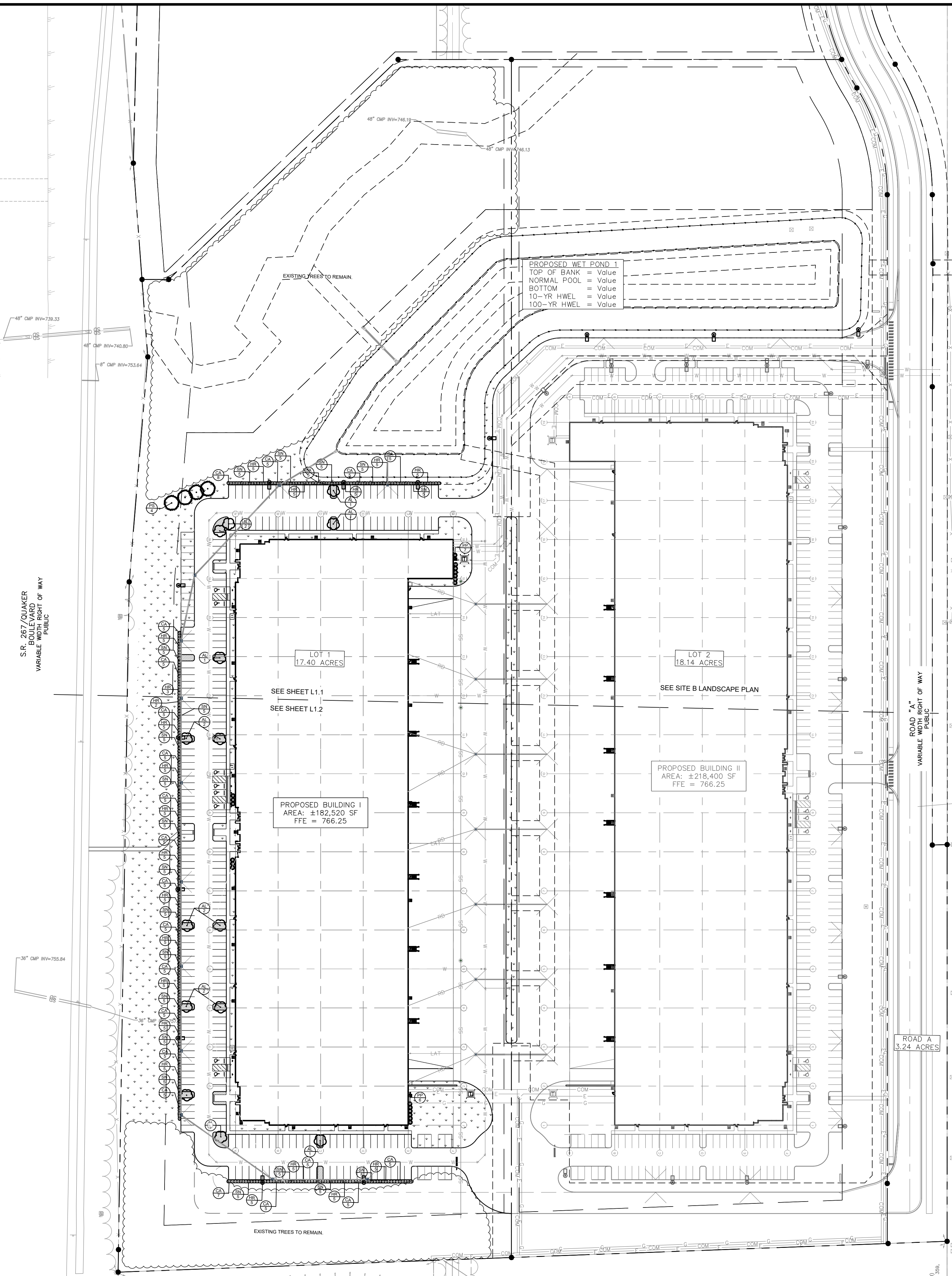
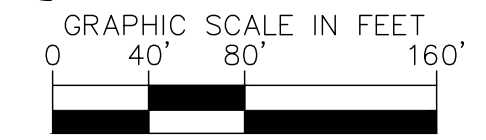
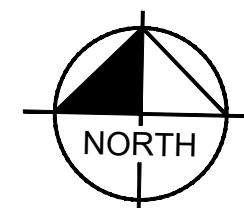


Drawing name: K:\IND\_DEV\170008020\_Ambrose\_Park\_Planfield\IN\2\_Design\CADD\PlanSheets\L1.0-LANDSCAPE PLAN.dwg L1.0 Aug 15, 2024 1:00pm by: ChadMoyes  
 This document, together with the concepts and designs presented herein, as an instrument of service, is intended only for the specific purpose and client for which it was prepared. Reuse of and improper reliance on this document without written authorization and adaptation by Kimley-Horn and Associates, Inc. shall be without liability to Kimley-Horn and Associates, Inc.

Indiana Utilities Protection Service



PROPOSED WET POND I  
 TOP OF BANK = Value  
 NORMAL POOL = Value  
 BOTTOM = Value  
 10-YR HWEL = Value  
 100-YR HWEL = Value

PROPOSED BUILDING I  
 AREA: ±182,520 SF  
 FFE = 766.25

PROPOSED BUILDING II  
 AREA: ±218,400 SF  
 FFE = 766.25

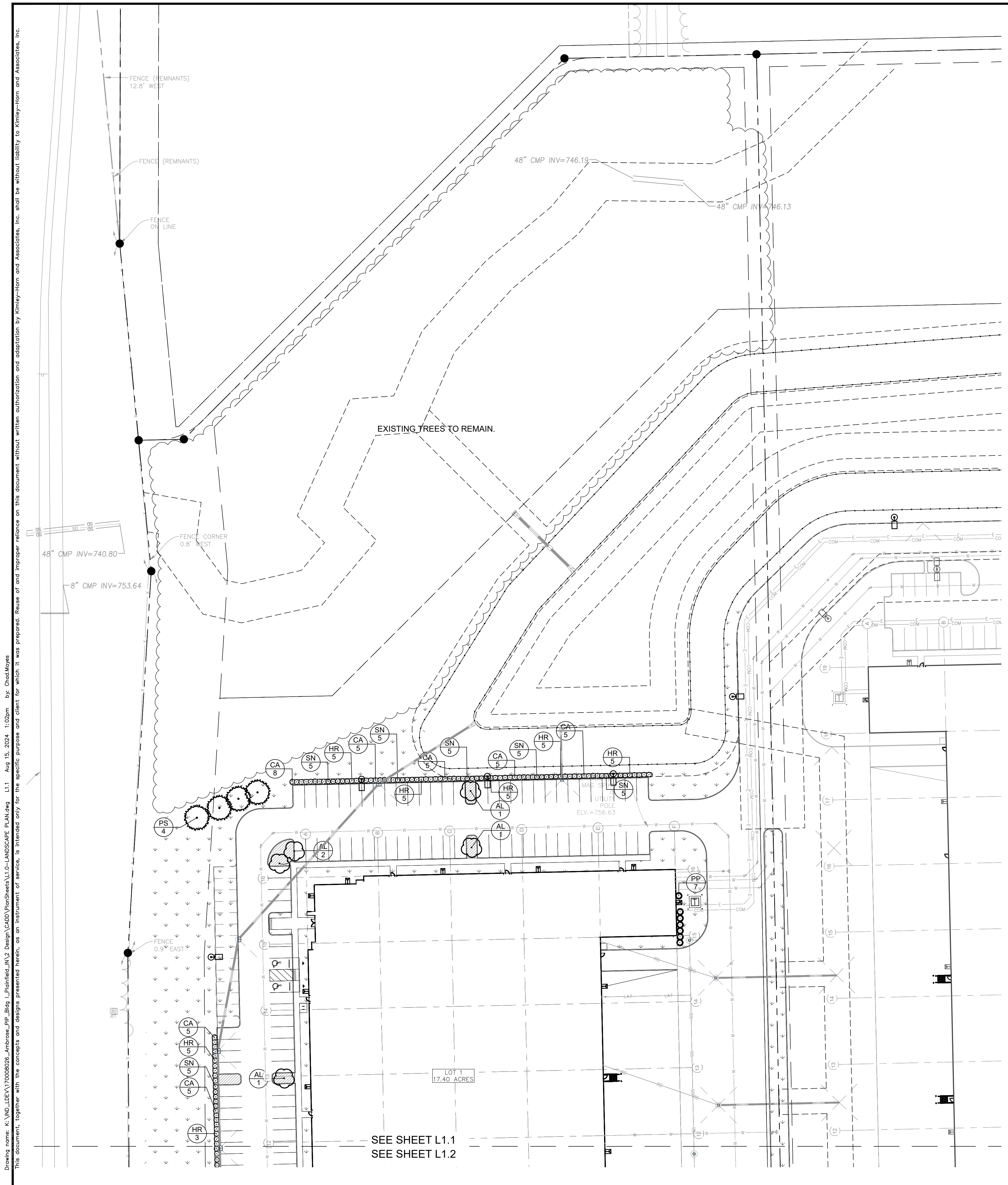
LOT 1  
 17.40 ACRES

LOT 2  
 18.14 ACRES

ROAD A  
 3.24 ACRES

NOT TO SCALE  
 EAST LINE, N 1/2, SEC. 13-14-N-R1E, T11N23S7W, R87721  
 661.45' (D) 90.00' (D) PER 30'

PLAINFIELD INNOVATION PARK PLAINFIELD, IN	OVERALL LANDSCAPE PLAN	<b>AMBROSE</b>	AS NOTED DESIGNED BY: CSM DRAWN BY: CAN CHECKED BY: BAS		<p>©2024 KIMLEY-HORN AND ASSOCIATES, INC.          500 EAST 96TH STREET, SUITE 300,          INDIANAPOLIS, IN 46240          WWW.KIMLEY-HORN.COM</p>	NO.	REVISIONS	DATE	BY
ORIGINAL ISSUE: 06/20/2024 KHA PROJECT NO. 170008020	SHEET NUMBER <b>L1.0</b>								



SEE SHEET L1.1  
 SEE SHEET L1.2

**PLANT SCHEDULE**

CODE	QTY	BOTANICAL NAME	COMMON NAME	CONT	CAL	HT
<b>EVERGREEN TREES</b>						
PP	19	PLATYCLADUS ORIENTALIS 'DEGROOT'S SPIRE'	DEGROOT'S SPIRE ARBORVITAE	B & B	--	6' HT MIN
PS	4	PINUS STROBUS	WHITE PINE	B & B	--	6' HT MIN
<b>ORNAMENTAL TREES</b>						
AL	14	AMELANCHIER LAEVIS	ALLEGHENY SERVICEBERRY MULTI-TRUNK	B & B	1.5" CAL MIN	
<b>SHRUBS AND GRASSES</b>						
CA	115	CEANOTHUS AMERICANUS	NEW JERSEY TEA	--	SEE PLAN	24" HT MIN
HR	100	HYDRANGEA PANICULATA 'BOBO'	PANICLE HYDRANGEA	--	SEE PLAN	24" HT MIN
SN	100	SORGHASTRUM NUTANS	INDIAN GRASS	--	SEE PLAN	24" HT MIN

**ORDINANCE CHART**

ZONING: Promenade of Noblesville PUD / PB		
REQUIREMENT	REQUIRED	PROVIDED
<b>PERIMETER LANDSCAPING</b>		
<b>North Perimeter:</b> • Level 2 perimeter: Any combination of plants selected from the plant categories listed in Table 4.7-C which equals or exceeds a plant unit value of 2.0 for each 100 lineal feet.	• North Perimeter: 610 LF/100 = 12.2 PUV required. Existing trees to remain.	• North Perimeter: 12.75 PUV provided 13 existing trees over 6" cal. = 9.75 PUV 4 evergreen trees 6' high = 3 PUV
<b>West Perimeter:</b> • Level 4 perimeter: Any combination of plants selected from plant categories listed in Table 4.7-C which equals or exceeds a plant unit value of 4.0 for each 100 lineal feet.	• West Perimeter: 1,324 LF/100 = 52.96 PUV required. Existing trees to remain.	• West Perimeter: 53.25 PUV provided 71 existing trees over 6" cal. = 53.25 PUV
<b>FOUNDATION PLANTINGS</b>		
• Front, side, and rear of the Building shall have foundation planting areas. • Foundation planting areas shall maintain a minimum depth of six (6) feet and any combination of plants selected from the Plant Categories listed in Table 4.7-C which equals or exceeds a Plant Unit Value of 1.0 for each one-hundred (100) lineal feet.	• 1,409 LF/ 100 = 14 PUV required	• 14.25 PUV provided 19 evergreen trees 6' high = 14.25 PUV
<b>PARKING LOT INTERIOR</b>		
• All new surface lots shall include at least one interior landscape island with one deciduous tree, ornamental tree, or evergreen tree per island.	• 18 interior islands = 18 deciduous, ornamental or evergreen trees required minimum.	• 18 ornamental trees provided.
<b>PARKING LOT PERIMETER</b>		
• A compact hedge row planted 3' o.c. and between twenty-four and thirty inches in height at the time of planting between the front yard and the edge of parking area.	• Compact hedge row planted 3' o.c. between front yard and edge of parking.	• Compact hedge rows planted 3' o.c. provided.

Drawing name: K:\IND\_DEV\170008020\_Ambrose\_Plan\Drawings\LANDSCAPE\LANDSCAPE PLAN.dwg L1.1 Aug 15, 2024 1:02pm by: Chad Moyes  
 This document, together with the concepts and designs presented herein, is intended only for the specific purpose and client for which it was prepared. Reuse of and improper reliance on this document without written authorization and adaptation by Kimley-Horn and Associates, Inc. shall be without liability to Kimley-Horn and Associates, Inc.

SCALE: AS NOTED  
 DESIGNED BY: CSM  
 DRAWN BY: CAN  
 CHECKED BY: BAS

**Kimley-Horn**  
 2024 KIMLEY-HORN AND ASSOCIATES, INC.  
 500 EAST 96TH STREET, SUITE 300,  
 INDIANAPOLIS, IN 46240  
 WWW.KIMLEY-HORN.COM

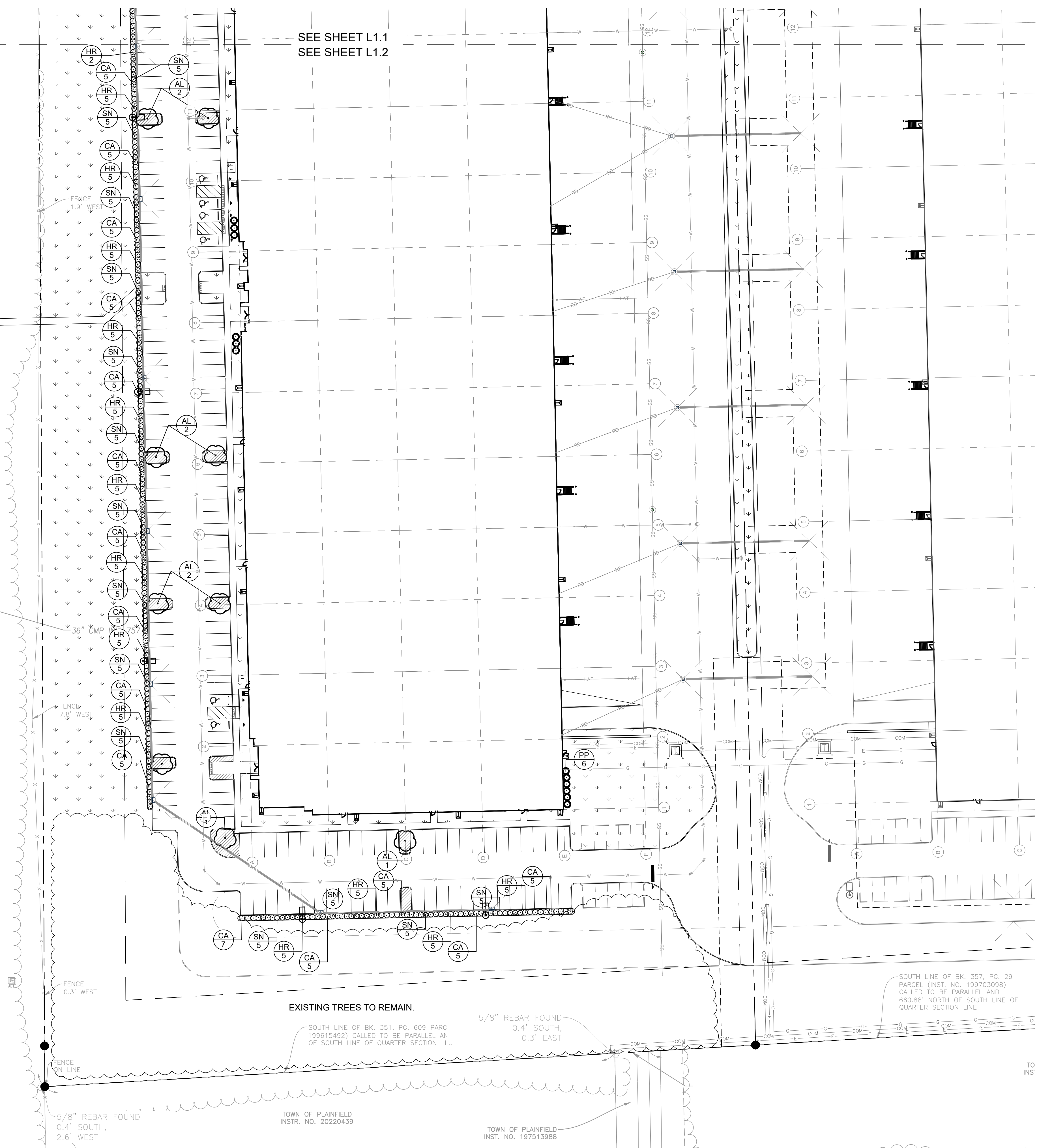
REVISIONS  
 NO. DATE BY

**LANDSCAPE PLAN AMBROSE**

**PLAINFIELD INNOVATION PARK**  
 PLAINFIELD, IN

ORIGINAL ISSUE:  
 06/20/2024  
 KHA PROJECT NO.  
 170008020  
 SHEET NUMBER  
**L1.1**

Drawing name: K:\IND\_DEV\170008020\_Ambrose\_Plan\Drawings\LANDSCAPE\_PLAN.dwg L1.2 Aug 15, 2024 1:03pm by: ChadMoyes  
 This document, together with the concepts and designs presented herein, is intended only for the specific purpose and client for which it was prepared. Reuse of and improper reliance on this document without written authorization and adaptation by Kimley-Horn and Associates, Inc. shall be without liability to Kimley-Horn and Associates, Inc.



**PLANT SCHEDULE**

CODE	QTY	BOTANICAL NAME	COMMON NAME	CONT	CAL	HT
<b>EVERGREEN TREES</b>						
PP	19	PLATYCLADUS ORIENTALIS 'DEGROOT'S SPIRE'	DEGROOT'S SPIRE ARBORVITAE	B & B	--	6' HT MIN
PS	4	PINUS STROBUS	WHITE PINE	B & B	--	6' HT MIN
<b>ORNAMENTAL TREES</b>						
AL	14	AMELANCHIER LAEVIS	ALLEGHENY SERVICEBERRY MULTI-TRUNK	B & B	1.5" CAL MIN	
<b>SHRUBS AND GRASSES</b>						
CA	115	CEANOTHUS AMERICANUS	NEW JERSEY TEA	--	SEE PLAN	24" HT MIN
HR	100	HYDRANGEA PANICULATA 'BOBO'	PANICLE HYDRANGEA	--	SEE PLAN	24" HT MIN
SN	100	SORGHASTRUM NUTANS	INDIAN GRASS	--	SEE PLAN	24" HT MIN

ORDINANCE CHART		
ZONING: Promenade of Noblesville PUD / PB		
REQUIREMENT	REQUIRED	PROVIDED
<b>PERIMETER LANDSCAPING</b>		
<b>North Perimeter:</b> • Level 2 perimeter: Any combination of plants selected from the plant categories listed in Table 4.7-C which equals or exceeds a plant unit value of 2.0 for each 100 lineal feet.	• North Perimeter: 610 LF/100 = 12.2 PUV required. Existing trees to remain.	• North Perimeter: 12.75 PUV provided 13 existing trees over 6" cal. = 9.75 PUV 4 evergreen trees 6' high = 3 PUV
<b>West Perimeter:</b> • Level 4 perimeter: Any combination of plants selected from plant categories listed in Table 4.7-C which equals or exceeds a plant unit value of 4.0 for each 100 lineal feet.	• West Perimeter: 1,324 LF/100 = 52.96 PUV required. Existing trees to remain.	• West Perimeter: 53.25 PUV provided 71 existing trees over 6" cal. = 53.25 PUV
<b>FOUNDATION PLANTINGS</b>		
• Front, side, and rear of the Building shall have foundation planting areas. • Foundation planting areas shall maintain a minimum depth of six (6) feet and any combination of plants selected from the Plant Categories listed in Table 4.7-C which equals or exceeds a Plant Unit Value of 1.0 for each one-hundred (100) lineal feet.	• 1,409 LF/ 100 = 14 PUV required	• 14.25 PUV provided 19 evergreen trees 6' high = 14.25 PUV
<b>PARKING LOT INTERIOR</b>		
• All new surface lots shall include at least one interior landscape island with one deciduous tree, ornamental tree, or evergreen tree per island.	• 18 interior islands = 18 deciduous, ornamental or evergreen trees required minimum.	• 18 ornamental trees provided.
<b>PARKING LOT PERIMETER</b>		
• A compact hedge row planted 3' o.c. and between twenty-four and thirty inches in height at the time of planting between the front yard and the edge of parking area.	• Compact hedge row planted 3' o.c. between front yard and edge of parking.	• Compact hedge rows planted 3' o.c. provided.

REVISIONS: \_\_\_\_\_ DATE \_\_\_\_\_ BY \_\_\_\_\_  
 No. \_\_\_\_\_  
 SCALE: AS NOTED  
 DESIGNED BY: CSM  
 DRAWN BY: CAN  
 CHECKED BY: BAS  
  
**LANDSCAPE PLAN AMBROSE**  
**PLAINFIELD INNOVATION PARK**  
 PLAINFIELD, IN  
 ORIGINAL ISSUE: 06/20/2024  
 KHA PROJECT NO. 170008020  
 SHEET NUMBER **L1.2**

