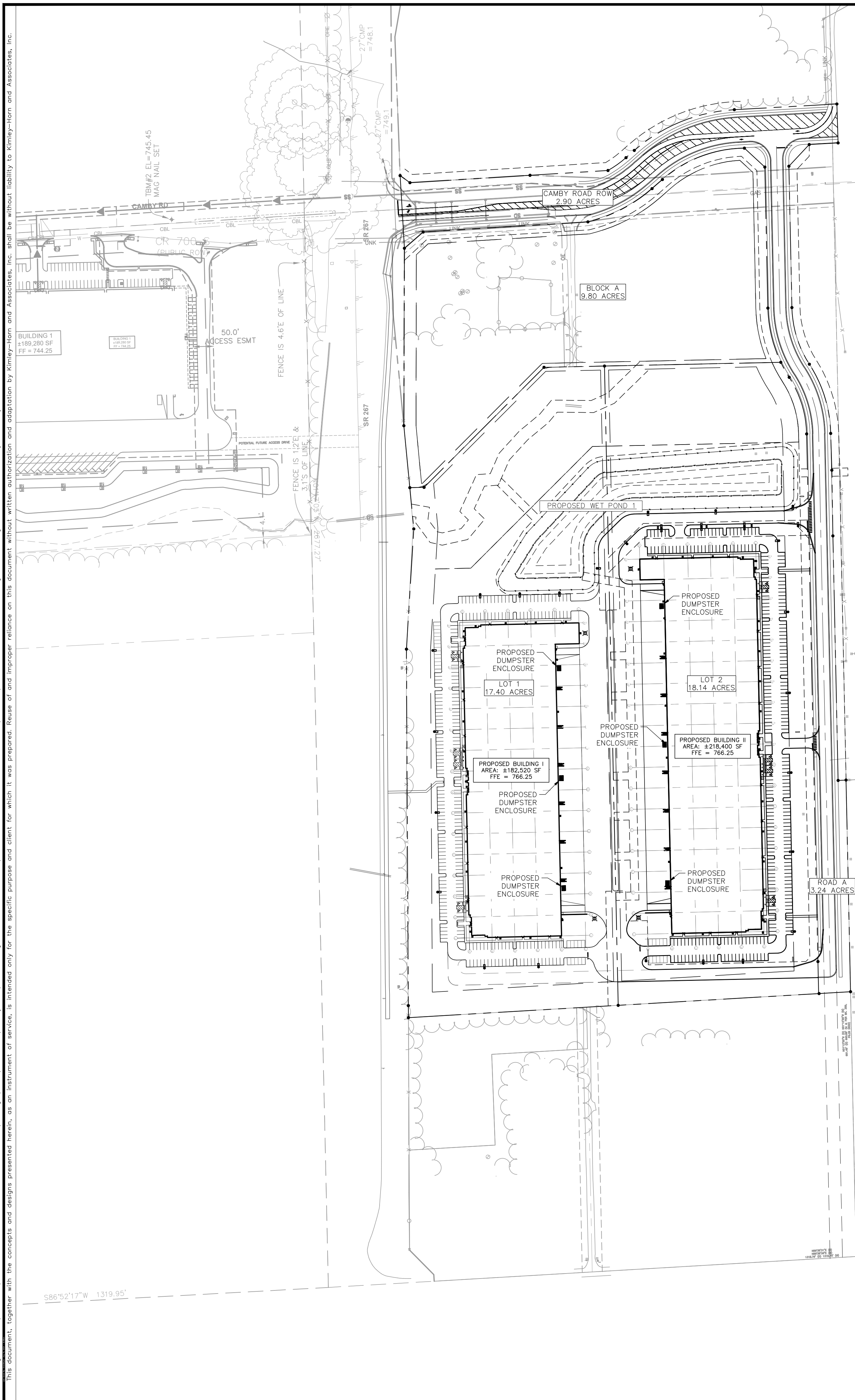
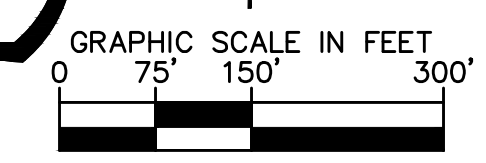
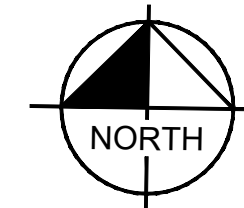


Drawing name: K:\IND\_DEV\170008020\_Ambrose\_Rock\_Creek\_Plainfield\_IN\2\_Design\CADD\PlanSheets\Primary\_Plan\Plainfield\_Logistics\_Park\_East\_Phase\170008020\_Ambrose\_Rock\_Creek\_Plainfield\_Phase1\_ProposedDumperExhibit.dwg C:\0 Aug 15, 2024 8:59am by: Chad Mayes

This document, together with the concepts and designs presented herein, as an instrument of service, is intended only for the specific purpose and client for which it was prepared. Reuse of and improper reliance on this document without written authorization and adaptation by Kimley-Horn and Associates, Inc. shall be without liability to Kimley-Horn and Associates, Inc.



Indiana Utilities Protection Service



**NOTES**

TRASH ENCLOSURE'S CONCRETE PAINTED TO MATCH BUILDING.

|  |  |   |                       |   |
|--|--|---|-----------------------|---|
| <p>ORIGINAL ISSUE:<br/>06/20/2024</p> <p>KHA PROJECT NO.<br/>170008020</p> <p>SHEET NUMBER<br/><b>EX.1</b></p> | <p>PLAINFIELD<br/>INNOVATION PARK<br/>PLAINFIELD, IN</p> | <p><b>PROPOSED<br/>DUMPSITER PLAN</b></p> | <p><b>Ambrose</b></p> | <p>SCALE: AS NOTED<br/>DESIGNED BY: CSM<br/>DRAWN BY: CAN<br/>CHECKED BY: BAS</p> <p><b>Kimley-Horn</b><br/>©2024 KIMLEY-HORN AND ASSOCIATES, INC.<br/>500 EAST 96TH STREET, SUITE 300,<br/>INDIANAPOLIS, IN 46240<br/>WWW.KIMLEY-HORN.COM</p> <p>BRYAN ALLEN S.<br/>REGISTERED PROFESSIONAL ENGINEER<br/>NOT APPROVED FOR CONSTRUCTION</p> <p>BY: <i>Bryan Allen</i></p> |
| <p>NO.</p>   | <p>REVISIONS</p>   | <p>DATE</p>                               | <p>BY</p>             |   |