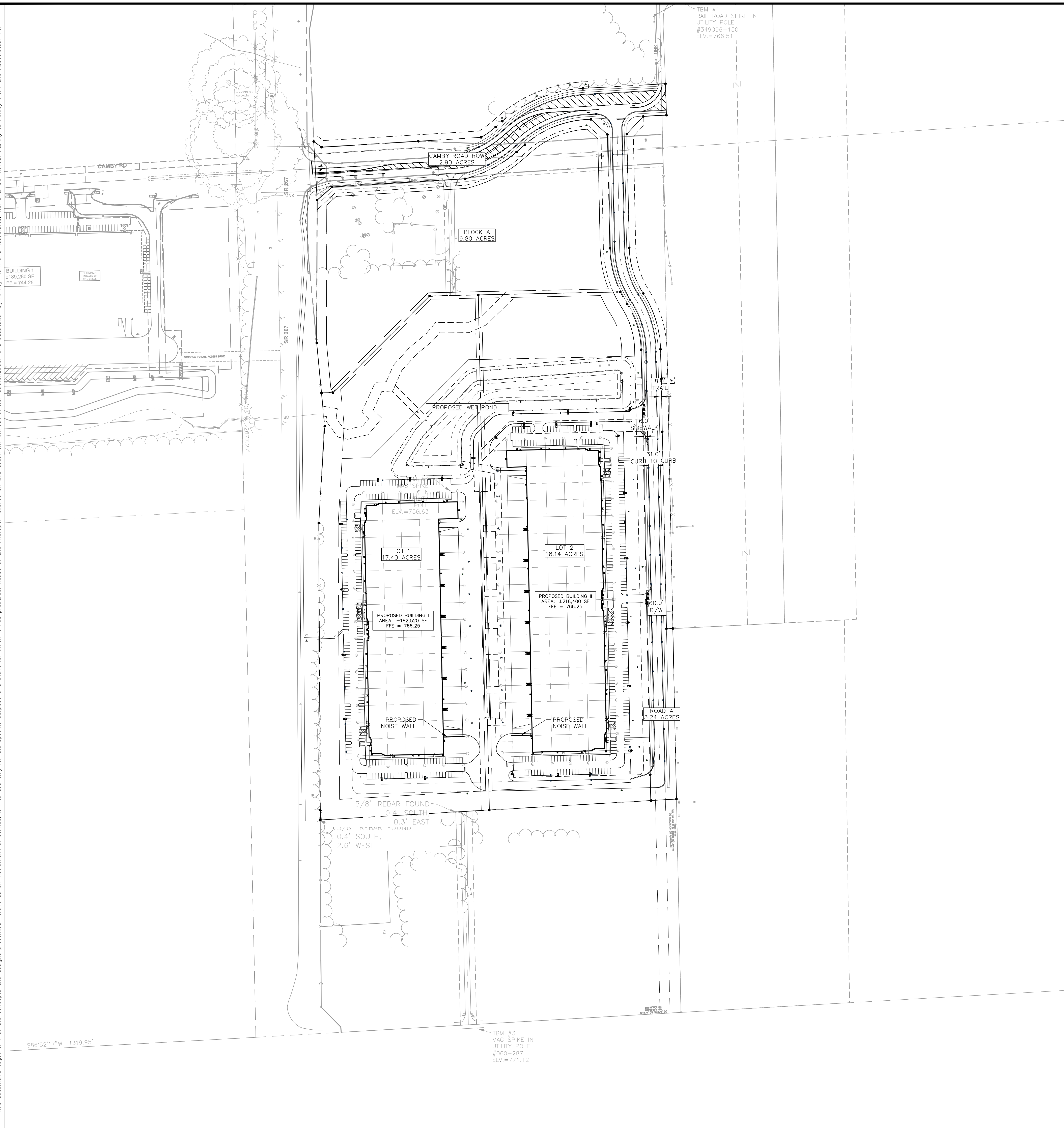
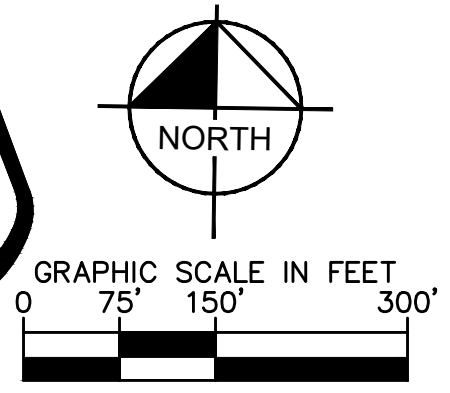


Drawing name: K:\IND\DEV\170008020\_Ambrose\_Rock\_Creek\_Plainfield\IND\Design\CADD\PlanSheets\Primary\Plan\Plainfield\Innovation\_Park\Plainfield\_SitePlan\_Rev\_2024-0613.dwg C3.0 Aug 15, 2024 8:45am by Chad Mayes  
 This document, together with the concepts and designs presented herein, is intended only for the specific purpose and client for which it was prepared. Reuse of and improper reliance on this document without written authorization and adaptation by Kimley-Horn and Associates, Inc. shall be without liability to Kimley-Horn and Associates, Inc.



Indiana Utilities Protection Service  
**Call 811**  
 before you dig



SITE SUMMARY	
SITE ZONING	= I-2 & HB
SITE ACREAGE	= 39.32 AC.±
BUILDING 1 AREA	= 182,520 SF
BUILDING 2 AREA	= 216,400 SF
PARKING SPACES (STANDARD) REQUIRED	
BUILDING 1	= 246 SPACES
BUILDING 2	= 279 SPACES
PARKING SPACES (STANDARD) PROVIDED	
BUILDING 1 (FUTURE)	= 246 SPACES
BUILDING 2 (FUTURE)	= 279 SPACES
BUILDING 2 (FUTURE)	= 10 SPACES
TOTAL PARKING SPACES PROVIDED	= 558 SPACES

<b>Kimley-Horn</b>	DESIGNED BY: CSM	DRAWN BY: CAN	CHECKED BY: BAS	REVISED
	<p><b>OVERALL SITE PLAN</b></p> <p><b>AMBROSE</b></p>			
<p>PLAINFIELD                  INNOVATION PARK                  PLAINFIELD, IN</p>	<p>ORIGINAL ISSUE:                  06/20/2024</p> <p>KHA PROJECT NO.                  170008020</p> <p>SHEET NUMBER  <b>C3.0</b></p>			