

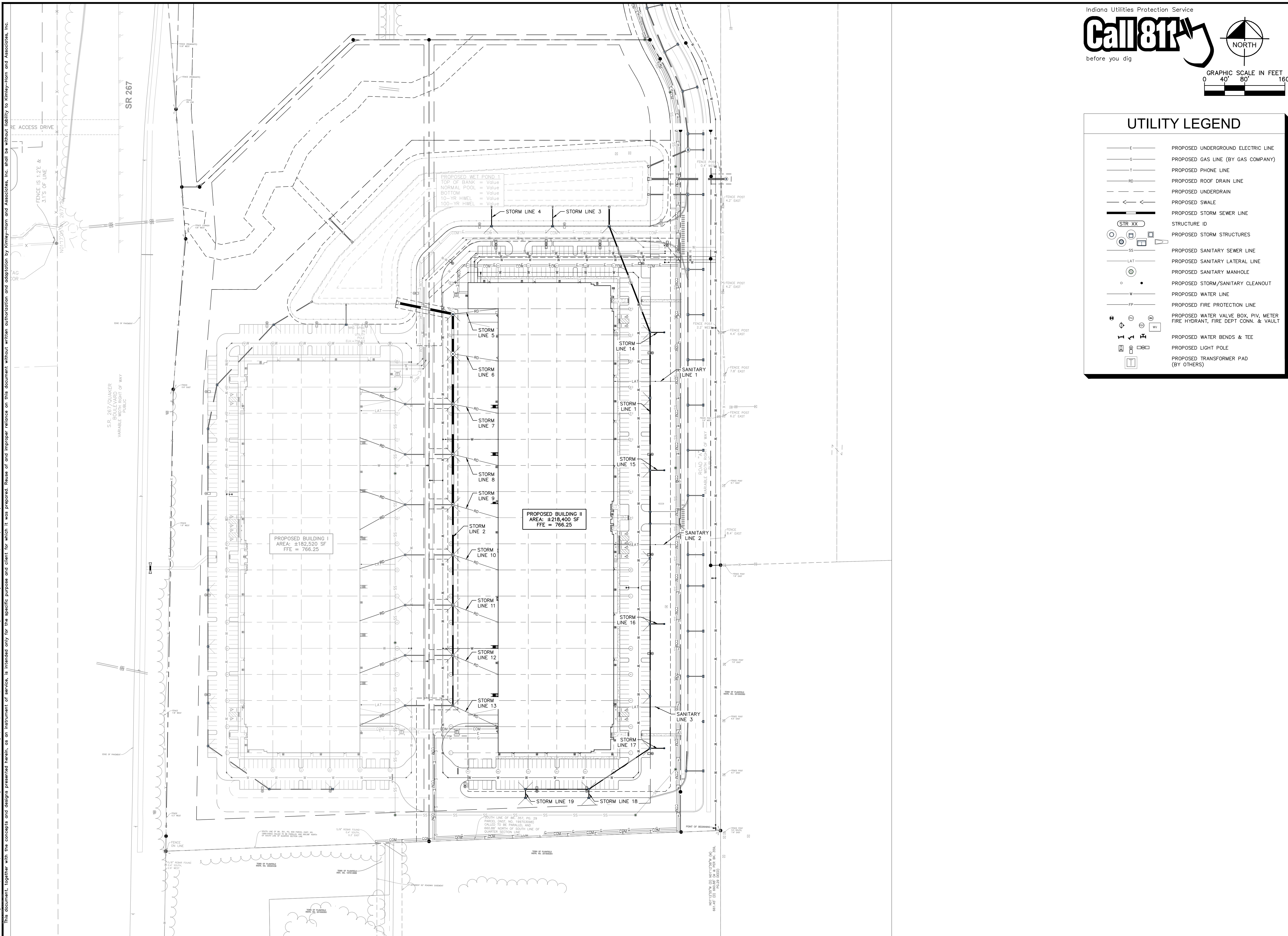
Drawing name: K:\IND_LDEV\170008027_Ambrose_PIP_Bldg_II_Planned_II_V2_Design\CADD\PlanSheets\06-OVERALL UTILITY PLAN.dwg C6.0 Aug 15, 2024 3:03pm by: ChadMoyes
 This document, together with the concepts and designs presented herein, as an instrument of service, is intended only for the specific purpose and client for which it was prepared. Reuse of and improper reliance on this document without written authorization and adaptation by Kimley-Horn and Associates, Inc. shall be without liability to Kimley-Horn and Associates, Inc.

Indiana Utilities Protection Service
Call 811
 before you dig

GRAPHIC SCALE IN FEET
 0 40' 80' 160'

UTILITY LEGEND

	PROPOSED UNDERGROUND ELECTRIC LINE
	PROPOSED GAS LINE (BY GAS COMPANY)
	PROPOSED PHONE LINE
	PROPOSED ROOF DRAIN LINE
	PROPOSED UNDERDRAIN
	PROPOSED SWALE
	PROPOSED STORM SEWER LINE
	STRUCTURE ID
	PROPOSED STORM STRUCTURES
	PROPOSED SANITARY SEWER LINE
	PROPOSED SANITARY LATERAL LINE
	PROPOSED SANITARY MANHOLE
	PROPOSED STORM/SANITARY CLEANOUT
	PROPOSED WATER LINE
	PROPOSED FIRE PROTECTION LINE
	PROPOSED WATER VALVE BOX, PIV, METER, FIRE HYDRANT, FIRE DEPT CONN. & VAULT
	PROPOSED WATER BENDS & TEE
	PROPOSED LIGHT POLE
	PROPOSED TRANSFORMER PAD (BY OTHERS)



NO.	REVISIONS	DATE	BY

SCALE: AS NOTED
 DESIGNED BY: CSM
 DRAWN BY: CAN
 CHECKED BY: BAS

Kimley-Horn
 2024 KIMLEY-HORN AND ASSOCIATES, INC.
 500 EAST 96TH STREET, SUITE 300,
 INDIANAPOLIS, IN 46240
 WWW.KIMLEY-HORN.COM

BRYAN ALLEN S.
 REGISTERED PROFESSIONAL ENGINEER
 NOT APPROVED FOR CONSTRUCTION
 DIANA
Bryan Starnard

AMBROSE

PLAINFIELD INNOVATION PARK - OVERALL UTILITY PLAN

BUILDING II
 PLAINFIELD, IN

ORIGINAL ISSUE:
 08/29/2024
 KHA PROJECT NO.
 170008027
 SHEET NUMBER
C6.0