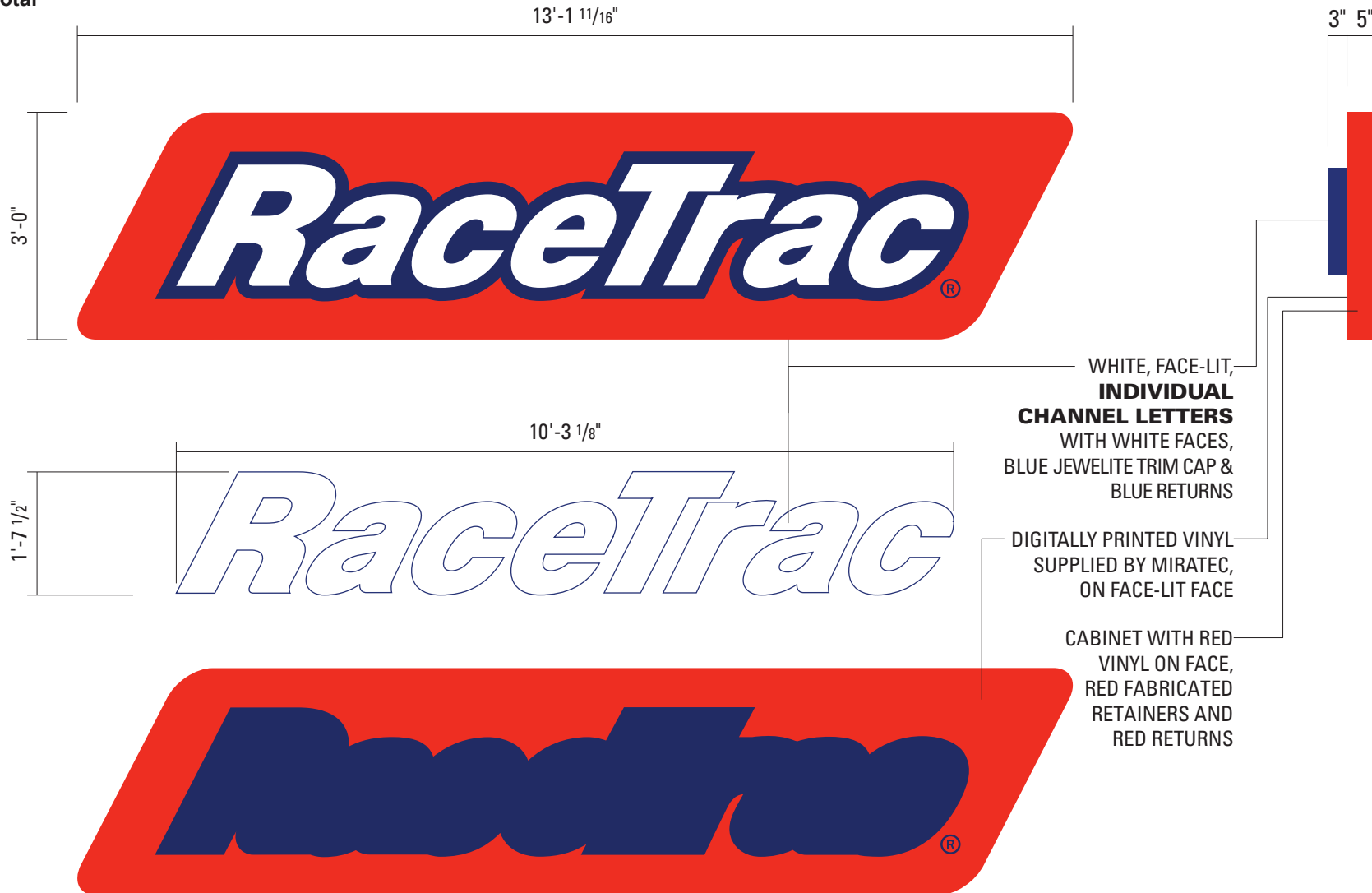


40 SqFt Main Identification Sign - A1, A2, A3

SINGLE FACED
QUANTITY 3
40 SqFt Each
120 SqFt Total



WHITE, FACE-LIT,
**INDIVIDUAL
CHANNEL LETTERS**
WITH WHITE FACES,
BLUE JEWELITE TRIM CAP &
BLUE RETURNS

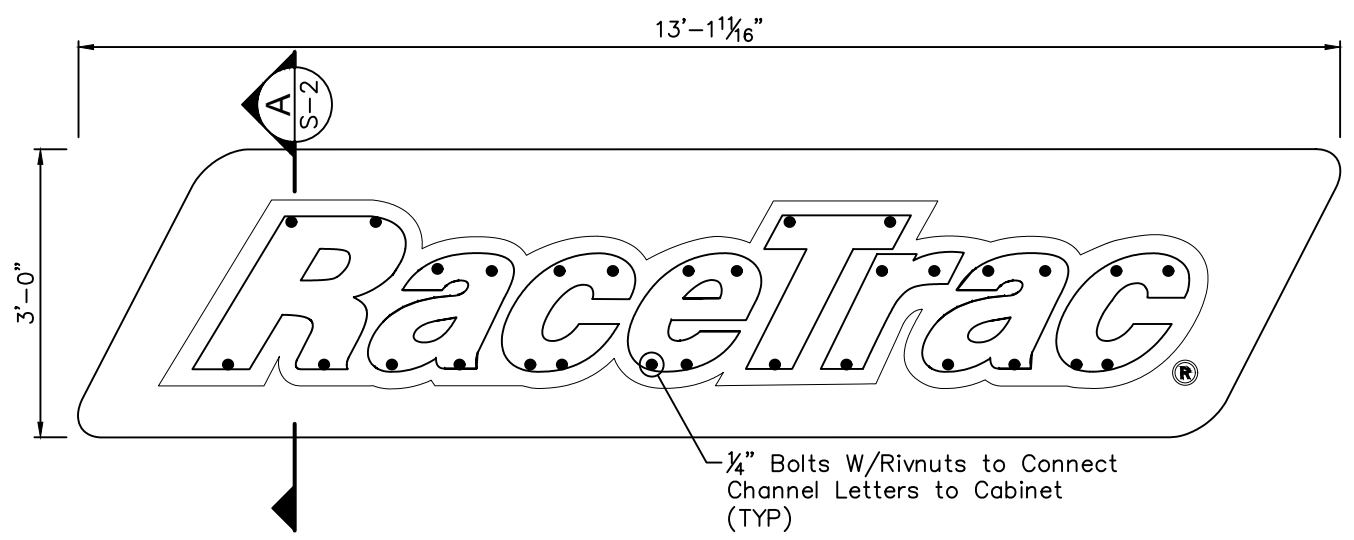
DIGITALLY PRINTED VINYL
SUPPLIED BY MIRATEC,
ON FACE-LIT FACE

CABINET WITH RED
VINYL ON FACE,
RED FABRICATED
RETAINERS AND
RED RETURNS

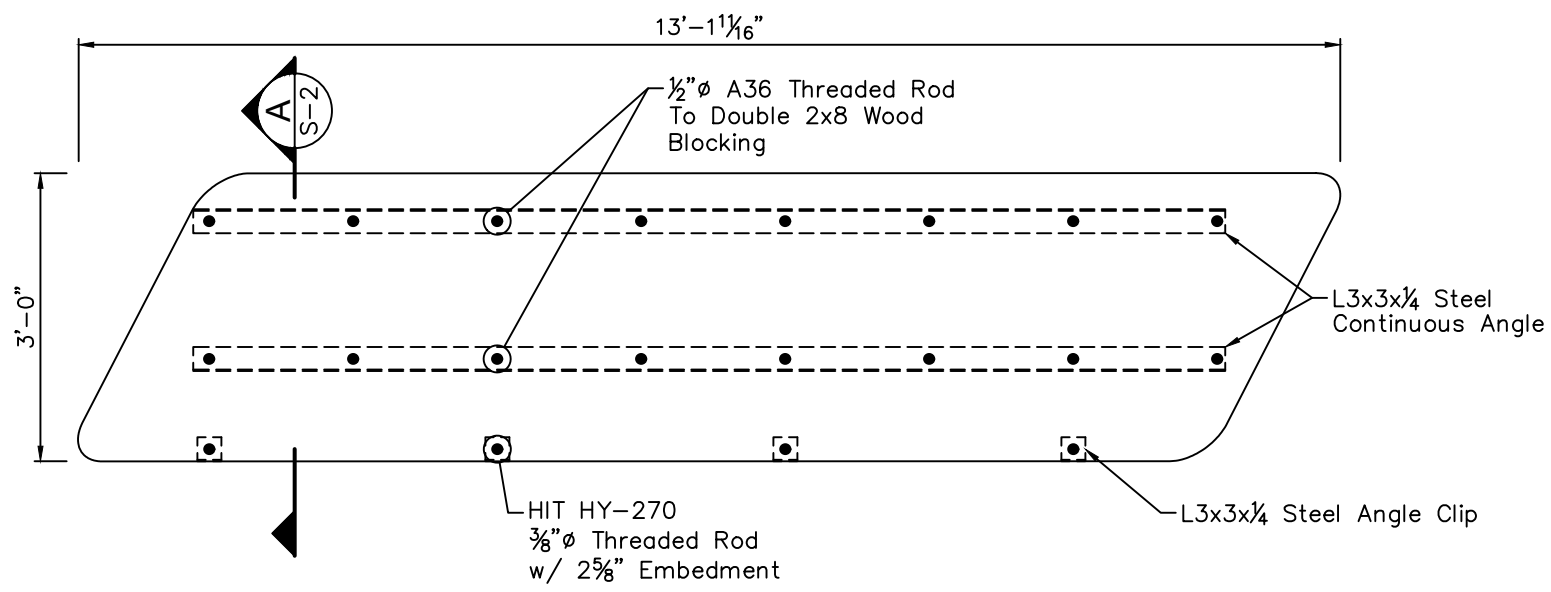


See Color Schedule on Page 2

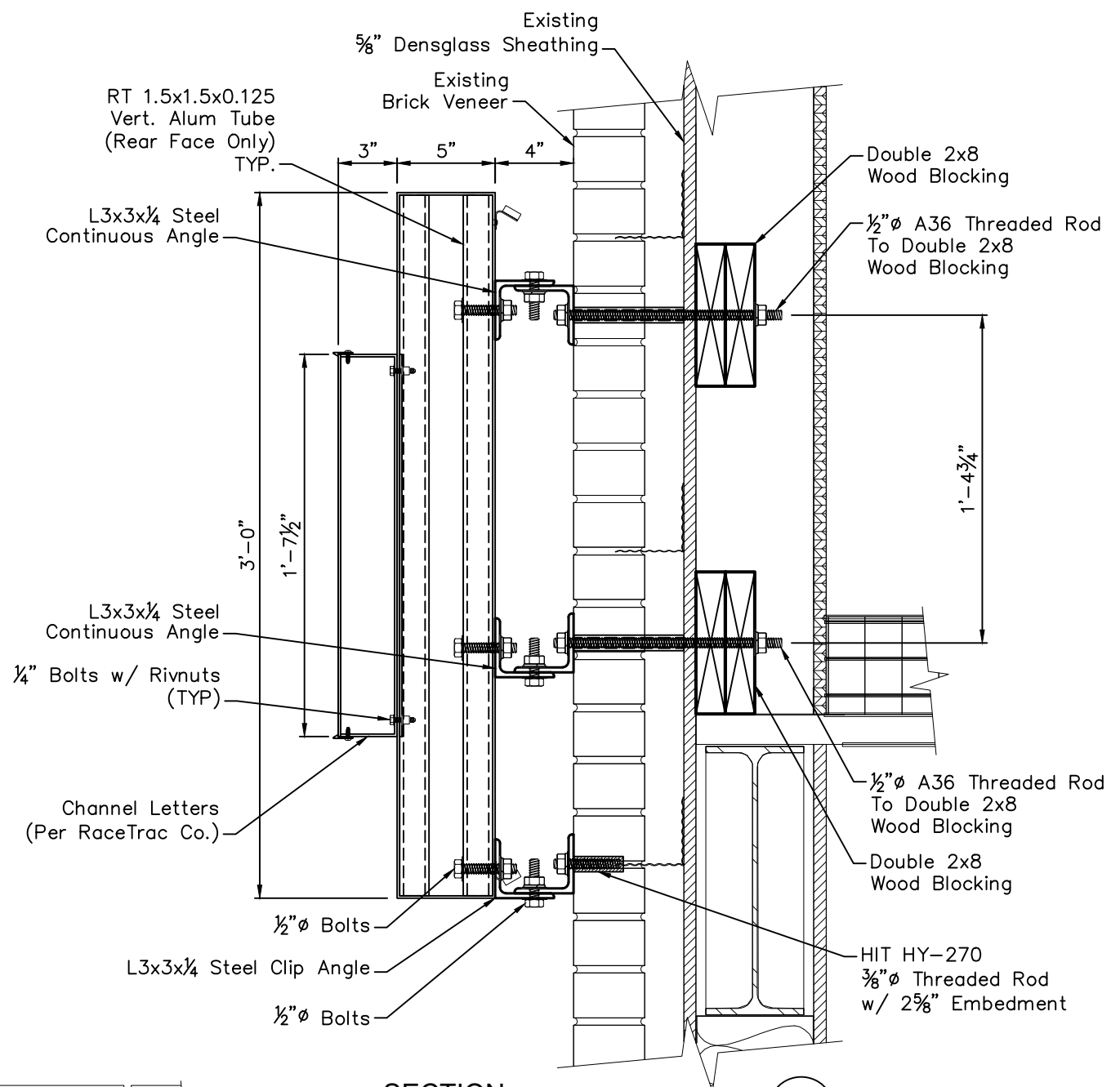
GENERAL NOTE: ALL WORK SHALL BE IN COMPLIANCE WITH RECOGNIZED INDUSTRY STANDARDS, MANUFACTURER'S RECOMMENDATIONS AND ALL APPLICABLE STATE AND LOCAL CODES. NO SUBSTITUTIONS ALLOWED.



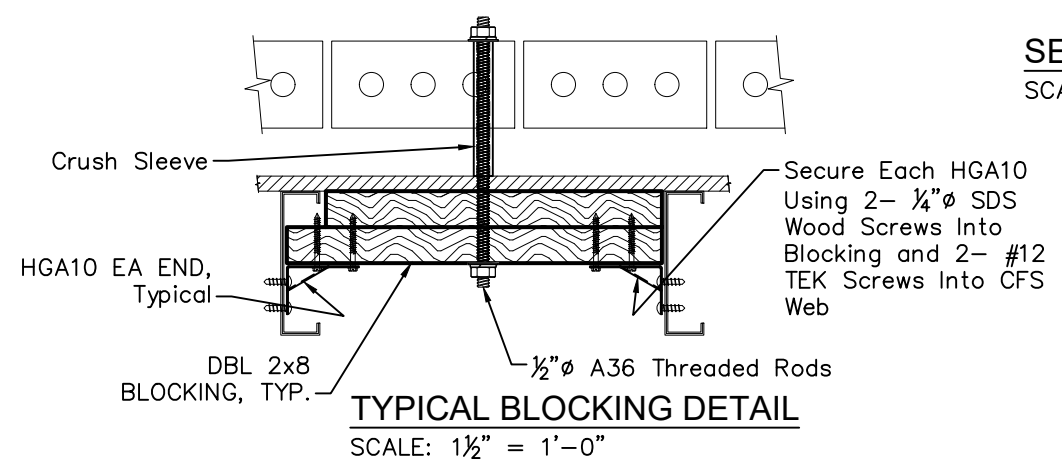
MAIN ID SIGN - A
SCALE: 1/2" = 1'-0"



MAIN ID SIGN - A (WALL ATTACHMENT)
SCALE: 1/2" = 1'-0"



SECTION A
SCALE: 1 1/2" = 1'-0"



TYPICAL BLOCKING DETAIL
SCALE: 1 1/2" = 1'-0"

DESIGN CRITERIA
Building Code: FBC 2017 (6th Edition)/ASCE 7-10
Analysis: LRFD-AISC 14th
Chapter 16; Section 1609.3.1
Ultimate Wind Speed $V_{ult} = 175$ mph
Nominal Wind Speed $V_{asd} = 136$ mph
Risk Category: II $V_{asd} = V_{ult} \cdot 0.6$
Exposure: C

Drawn	BLR
Checked	ERA
EAC Job#	100z3561
Filename	100x3561.dwg
Created	9/10/2020

Engineer:
ERNEST ROBERTS ALLEY
License Number:

Elrod Engineering, LLC
Certificate of Authorization:
30647
871 Seven Oaks Blvd., Suite 220
Smyrna, TN 37167
800-553-5111

CLIENT:
RaceTrac
200 Galleria Pkwy, Suite 900
Atlanta, GA 30339

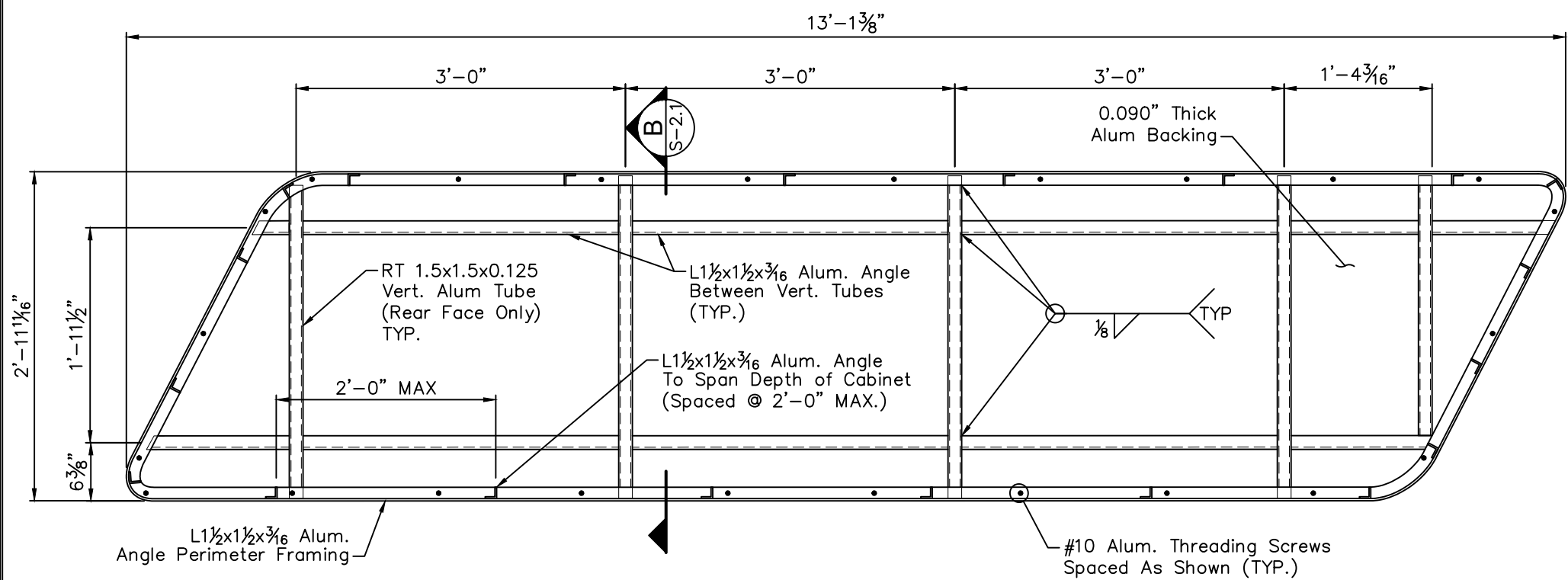
SIGN A - 40SF (BRICK MOUNTED)
RaceTrac
TBD
TBD

Revisions	

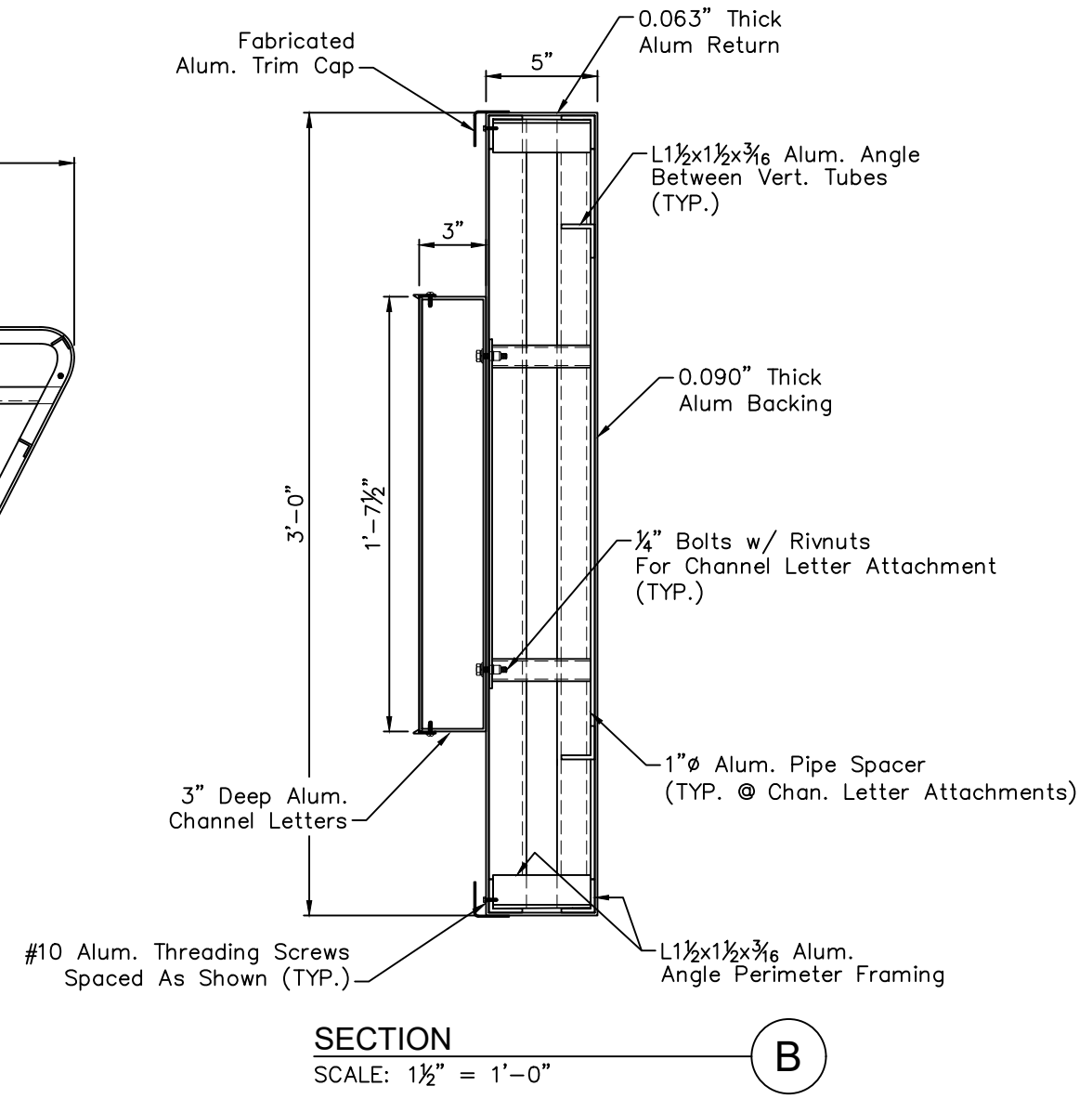
Sheet No.
S-2

9/10/2020

WELD ALL AROUND ALL FRAMING MEMBERS JOINTS UNLESS NOTED OTHERWISE.



40 SF LOGO SIGN FRAMING ELEVATION
SCALE: 3/4" = 1'-0"



Drawn	BLR
Checked	ERA
EAC Job#	100z3561
Filename	100x3561.dwg
Created	9/10/2020

Engineer:
ERNEST ROBERTS ALLEY
License Number:



Elrod Engineering, LLC
Certificate of Authorization:
30647
871 Seven Oaks Blvd., Suite 220
Smyrna, TN 37167
800-553-5111

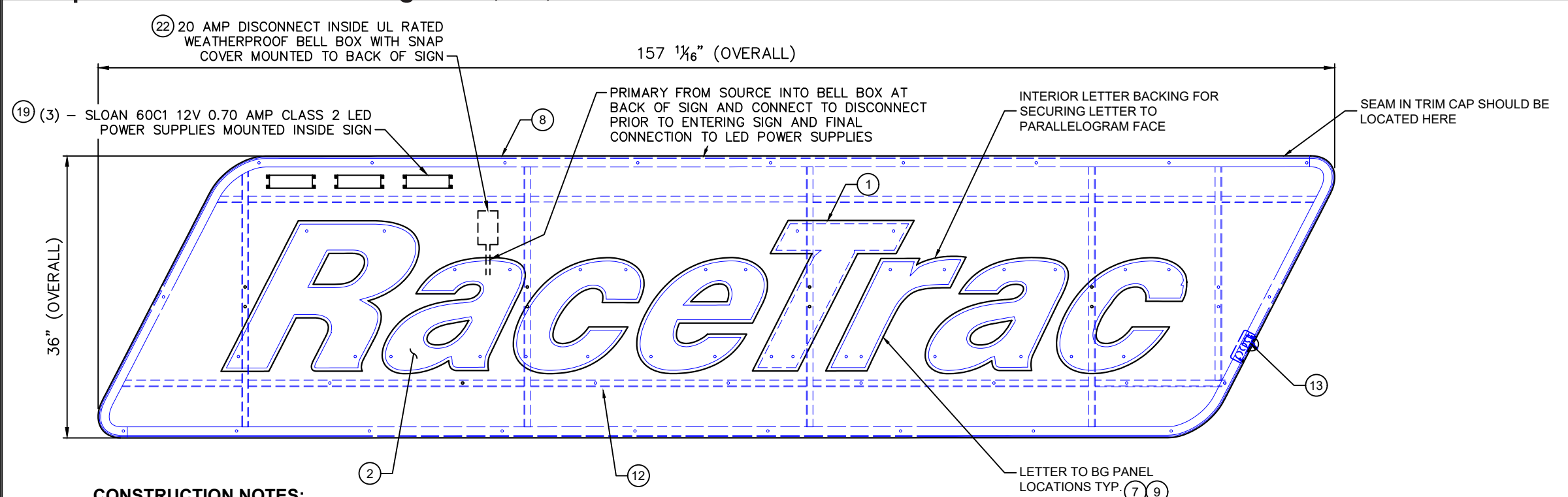
CLIENT:
RaceTrac
200 Galleria Pkwy, Suite 900
Atlanta, GA 30339

SIGN A - 40SF - FRAME
RaceTrac
TBD
TBD

Revisions	

Sheet No.
S-2.1

9/10/2020



CONSTRUCTION NOTES:

- FACE TREATMENT:**
SEE COLOR SCHEDULE.
- RETURN TO FACE ATTACHMENT:**
WELDED OR ADHERED WITH STRUCTURAL ADHESIVE.
- LED SPECIFICATIONS:**
SLOAN PRISM (701269-6WSJ1-MB) LED'S FOR FACE LIGHTING LETTERS.
SLOAN BendLUX (701960-6WS241) WHITE LED FOR HALO LIGHTING LETTERS.
SLOAN PRISM HO (701269-6WHJ1-MB) WHITE LED FOR HALO LIGHTING PARALLELOGRAM.
- LETTER INTERIOR:**
PAINT INTERIOR STARBRITE WHITE OR EQUIV.
CAULK INSIDE PERIMETER OF LETTERS TO PREVENT LIGHT LEAKS.
- PAINT:**
ALL EXTERIOR PAINTS TO HAVE SEMI-GLOSS FINISH (SEE COLOR SCHEDULE)
ALL PAINTS TO HAVE A 2.8 VOC.
OR LESS AS REQUIRED BY CODE.
- FRAMING:**
WELD ALL AROUND ALL ANGLE FRAME JOINTS UNLESS NOTED OTHERWISE.
- ALL DISSIMILAR MATERIALS THAT CONTACT EACH OTHER MUST BE PRIMED, PAINT, OR COATED TO PREVENT CORROSION.

FRONT ELEVATION @ 40 SQFT PARALLELOGRAM - FOR EFIS/BRICK

(SEE COLOR SCHEDULE ON SHT 2)

INSTALLATION NOTES:

- MANUFACTURER TO PROVIDE FULL SIZE MOUNTING PATTERN.
- INSTALLER TO DRILL MOUNTING HOLES, INSTALL CONDUIT ON BACK OF LETTERS TO PASS THRU WALL.
- JUNCTION BOXES TO BE INSTALLED ON THE INSIDE OF WALL BEHIND LETTERS & BACKGROUND PANEL.
- INSTALLER TO RUN CONDUIT AND CONNECTING WIRE TO EACH JUNCTION BOX.
- INSTALLATION OF JUNCTION BOXES AND ELECTRICAL CONNECTIONS TO BE DONE BY QUALIFIED INDIVIDUAL THAT MEETS LOCAL AND NATIONAL CODES.
- MANUFACTURER TO SUPPLY TRANSFORMER BOXES WITH LOUVERED VENTS AND SCREENS, TO HELP IN THE DISSIPATION OF HEAT.
- INSTALLER TO SUPPLY MOUNTING ANGLE.
- WHEN USING HILTI ANCHORING SYSTEM, IT IS TO BE USED IN STRICT ACCORDANCE WITH MANUFACTURER'S GUIDELINES.
- INSTALLER TO SUPPLY FASTENERS TO MOUNT BACKGROUND PANEL TO BUILDING WALL.

GENERAL NOTES:

- DO NOT USE GRAPHICS SHOWN ON THIS DRAWING FOR PRODUCTION REFER TO PRODUCTION ELECTRONIC FILES.
- MANUFACTURER TO REFERENCE COLOR ART WORK TO ENSURE THAT ALL COLORS ARE CORRECT, IMMEDIATELY CONTACT RACETRAC IF COLOR ART WORK AND PRODUCT DRAWING HAVE ANY DISCREPANCIES OR HAVE NOT BEEN PROVIDED.
- INSTALLER SHALL VERIFY ALL SITE CONDITIONS AND DIMENSIONS.
- EXISTING WALL CONSTRUCTION TYPE MUST BE DETERMINED AT THE ACTUAL PROPOSED LOCATION OF THE LETTERS BY THE INSTALLER.
- INSTALLER SHALL VERIFY THAT FASTENERS CHOSEN ARE SUITABLE WITH WALL CONDITION TO WITHSTAND THE STATED PULLOUT FORCE.
- THE BUILDING ENGINEER SHALL INCLUDE THE LOADS APPLIED BY THE SIGN STRUCTURE IN THE DESIGN OF THE WALL SYSTEM.
- INSTALLATION SHALL CONFORM TO NATIONAL ELECTRICAL CODE AND OTHER APPLICABLE CODES.
- ALL SEAMS IN TRIM CAPS SHOULD BE LOCATED ON TOP OF LETTER AND PARALLELOGRAM

ALUMINUM MATERIAL NOTE:

- SPECIFICATION FOR ALL NON-STRUCTURAL MEMBERS TO BE ALUMINUM 3003 ALLOY.
- SPECIFICATION FOR ALL STRUCTURAL MEMBERS TO BE ALUMINUM 5052 ALLOY.

ELECTRICAL NOTES

- All material and fasteners meet 3004.4
- All electrical components are UL listed and approved.
- Sign grounded according to NEC 600.7.
- Signs manufactured and listed NEC 600.3 and marked per NEC 600.4.
- All branch circuits per NEC 600.5(B).1 or (B).2.
- All Signs controlled by photocell or time clock per NEC 2017, FBC 2014, 6th Edition.
- One visible 20 amp disconnect per sign per circuit per NEC 600.6(A).1.
- All Class 2 rated LED modules and LED power supplies will be in compliance with a nationally recognized test laboratory.

ELECTRICAL DETAILS AND SPECIFICATIONS SHOWN IN THIS DRAWINGS ARE FOR REPRESENTATIONAL PURPOSES ONLY.

SIGN DISCONNECT NOTE:
UL RATED CIRCUITED BREAKER LOCK-OUT DEVISE FOR SECONDARY SIGN DISCONNECT TO BE INSTALLED AT DESIGNATED SIGN BREAKER IN MAIN PANEL AND SWITCHED OFF WHEN SERVICING SIGN.

FIND #	DESCRIPTION	TOTAL QUANTITY
1	.063" THK. X 3" LG. ALUM. LETTER RETURN (SEE COLOR SCHEDULE)	A/R
2	.170" THK. WHITE ACRYLIC FACE (SEE COLOR SCHEDULE)	A/R
3	.125" THK. AL. SHEET - FOR PARALLELOGRAM (SEE COLOR SCHEDULE)	A/R
4	.063" THK FABRICATED ALUMINUM TRIM CAP	A/R
5	1 1/4" X 1 1/4" X 1/8" ALUMINUM ANGLE CLIP	A/R
6	SLOAN BendLUX WHITE LED (701960-6WS241)	A/R
7	1/4". MS SCREW WITH WASHER FOR LETTER MOUNTING	40
8	.063" THK. X 5" LG. AL. PARALLELOGRAM RETRN (SEE COLOR SCHEDULE)	A/R
9	1"Ø ALUMINUM PIPE SPACER	46
10	SLOAN PRISM WHITE LED (701269-6WSJ1-MB)	120
11	ELECTRICAL MALE AND FEMALE DISCONNECT CON.'S (1 SET PER LTR)	8
12	1 1/2" X 1 1/2" X 3/16" ALUMINUM ARCHITECTURAL ANGLE FRAME (FOR BACKGROUND PANEL LETTER MOUNTING)	A/R
13	1 1/2" X 1 1/2" X 3/16" AL. ANGLE MOUNTING FRAME (FOR BG PANEL)	A/R
14	1/4" RIV NUTS	A/R
15	1 1/2" X 1 1/2" X 1/8" ALUMINUM TUBE (FOR VRT SUPPORTS IN BG PANEL)	A/R
16	1" X 1" X 1/16" THK. ALUMINUM LIGHT SHIELD	5
17	#10 ALUMINUM FLAT PAN HEAD THREADING SCREW @ 9" O.C.	103
18	1/2" X 1 1/2" ALUMINUM PIPE SPACER	A/R
19	SLOAN 12V 60W POWER SUPPLY W/ FASTENERS	3
20	3/8" DIA. LIQUID TIGHT CONDUIT CONNECTOR	A/R
21	3/8" DIA. LIQUID TIGHT FLEXIBLE CONDUIT	A/R
22	20 AMP TOGGLE DISCONNECT SWITCH	1
23	3M IJ3650 CLEAR FILM - PRINTED MIRATEC VINYL RT PARALLELOGRAM	1
24	J-BOX WITH COVER FOR PRIMARY CONNECTION	1
25	3" X 3" X 1/4" ALUMINUM GUSSETS	8
26	SLOAN PRISM HO WHITE LED (701269-6WHJ1-MB)	---
27	-----	---
28	-----	---
29	3/8" SELF-TAPPING SCREWS. PRE-DRILL MOUNTING HOLES	20
30	1/8" POP RIVET	A/R
31	-----	A/R
32	-----	A/R
33	1" JEWELITE TRIM CAP (FOR LETTERS) (SEE COLOR SCHEDULE)	A/R
34	RED PAINT "C1" - AKZO SIGN 91780, SEMI-GLOSS (SEE COLOR SCHEDULE)	A/R
35	RED PAINT "C1" - AKZO SIGN 91780, SEMI-GLOSS, 2 OUNCE PAINT KIT	1
36	BLUE PAINT "C5" - AKZO SIGN 3243 , SEMI-GLOSS (SEE COLOR SCHEDULE)	A/R
37	BLUE PAINT "C5" - AKZO SIGN 3243 , SEMI-GLOSS, 2 OUNCE PAINT KIT	1
38	.170" THK. CLEAR ACRYLIC w/ WHITE DIFFUSER (SEE COLOR SCHEDULE)	A/R
39	#8 COUNTERSUNK THREAD ROLLING SCREW	A/R
40	-----	---
41	-----	---
42	NEOPRENE GASKET	A/R
43	3M IJ3650 CLEAR FILM - PRINTED MIRATEC VINYL RT PARALLELOGRAM DARK RED, LIGHT RED, AND BLUE	A/R

- ELECTRICAL:**
MANUFACTURER TO PROVIDE 10'-0" ELECTRICAL PIGTAIL TO EACH INDIVIDUAL LETTER & LOGO.

NOTE: (22)
20 AMP DISCONNECT SWITCH SHOULD BE LOCATED ON THE PRIMARY SIDE OF ALL POWER SUPPLIES. SWITCH MUST BE LOCATED IN SIGHT OF LETTERS OR HAVE CAPABILITY OF BEING LOCKED IN OPEN CIRCUIT POSITION TO MEET U.L. REQUIREMENTS.

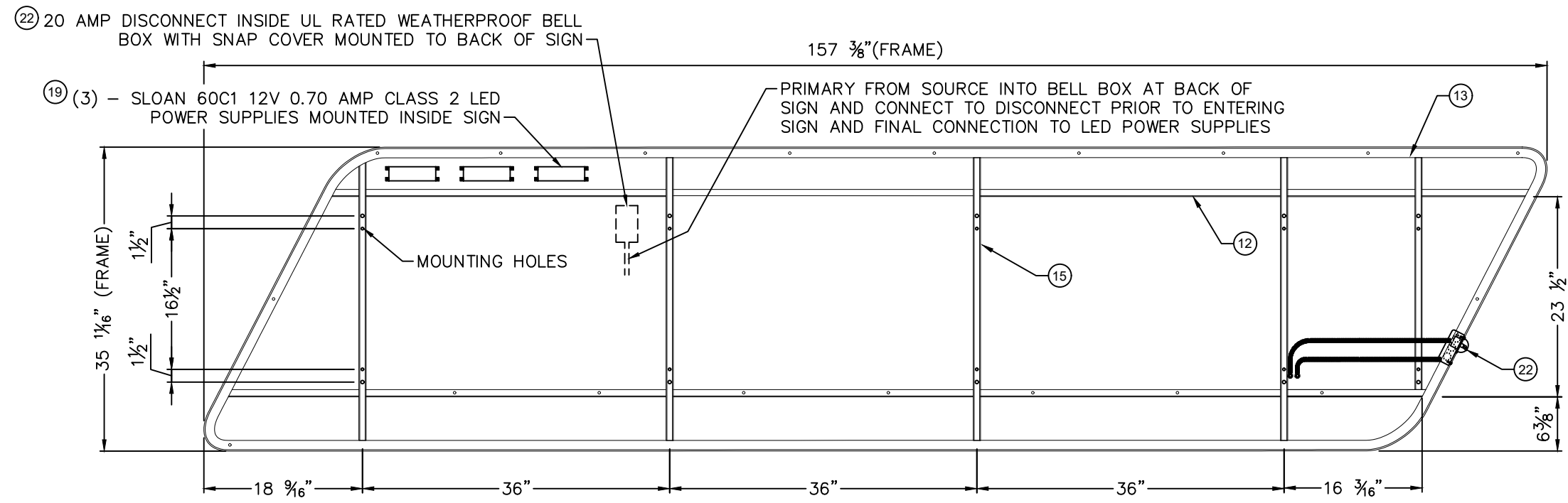
Drawn	BLR	Engineer:	ERNEST ROBERTS ALLEY
Checked	ERA	License Number:	
EAC Job#	100z3561		
Filename	100x3561.dwg		
Created	9/10/2020		

Elrod Engineering, LLC
Certificate of Authorization: 30647
871 Seven Oaks Blvd., Suite 220
Smyrna, TN 37167
800-553-5111

CLIENT:
RaceTrac
200 Galleria Pkwy, Suite 900
Atlanta, GA 30339

SIGN A: 40SF - ELECTRICAL
RaceTrac
TBD
TBD

Revisions	Sheet No.
	S-2.2



FRONT ELEVATION @ BACKGROUND PANEL
(FACE & LETTERS REMOVED FOR CLARITY)

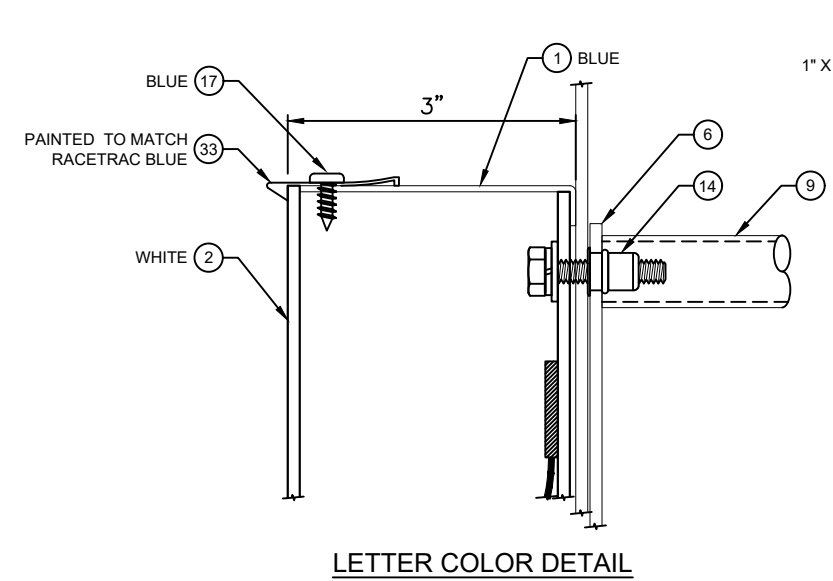
COLOR SCHEDULE	
"LETTERS" COLOR SCHEDULE:	
FACE MATERIAL: WHITE (.170" THK. #7328 WHITE ACRYLIC)	
FACE TREATMENT: NONE	
BACK MATERIAL: WHITE (.170" THK. CLEAR ACRYLIC w/ WHITE DIFFUSER FILM)	
RETURN/TRIM CAP COLOR: AKZO SIGN 3243 BLUE PAINT, SEMI-GLOSS	
"BACKGROUND CABINET" COLOR SCHEDULE:	
FACE MATERIAL: WHITE (.170" THK. #7328 WHITE ACRYLIC)	
FACE TREATMENT: DIGITALLY PRINTED TRANSLUCENT VINYL BY MIRATEC (SEE VINYL NOTE) APPLY FIRST SURFACE, 3M #3635-70 WHITE DIFFUSER VINYL APPLY SECOND SURFACE	
BACK MATERIAL: WHITE (.170" THK. CLEAR ACRYLIC w/ WHITE DIFFUSER FILM)	
BACK TREATMENT: INSIDE OF SIGN TO BE PAINTED WHITE. CLEAR ACRYLIC w/ WHITE DIFFUSER FILM FOR HALO ILLUMINATION	
RETURN/RETAINER COLOR: AKZO SIGN 91780 RED PAINT	
APPROVED ALTERNATE PAINT COLORS	
DARK RED PAINT COLOR	
MATTHEWS PAINT: #MP 81489 RED PAINT, SEMI-GLOSS	
AKZO PAINT: AKZO SIGN 91780 RED PAINT	
BLUE PAINT COLOR	
MATTHEWS PAINT: #MP02316 BLUE PAINT, SEMI-GLOSS	
AKZO PAINT: AKZO SIGN 3243 BLUE PAINT	

NOTE:
WHERE DISSIMILAR METALS ARE IN CONTACT THEY MUST BE COATED OR A BARRIER MUST BE PLACED BETWEEN THEM TO PREVENT GALVANIC REACTION.

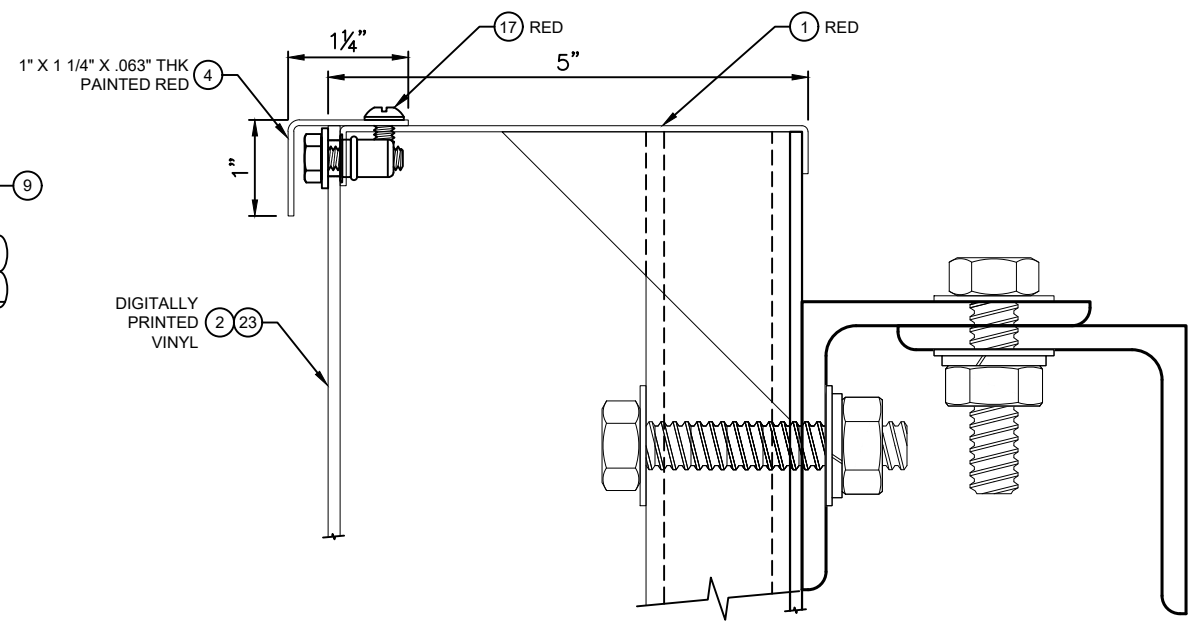
- 23 VINYL NOTES:**
- DIGITALLY PRINTED VINYL BY MIRATEC SYSTEMS
 - PURECOLOR TECHNOLOGY™ IS THE ONLY APPROVED CONSTRUCTION. NO SUBSTITUTIONS ARE ALLOWED.
 - COLOR SPECIFICATIONS, MATERIAL SPECIFICATION, AND WARRANTIES HAVE ALREADY BEEN DETERMINED AND COMMUNICATED TO OUR APPROVED WHOLESALE GRAPHICS MANUFACTURER, MIRATEC SYSTEMS

PRIMARY MOUNTING NOTE:
PROTOTYPICAL MOUNTING LAYOUT SHOWN – ATTACHMENT QUANTITY AND FASTENER SIZE CAN BE DETERMINED BY SIGN VENDOR AND IS DEPENDENT ON SIGN VENDOR VERIFYING THE SIZE AND NUMBER WITH A LICENSED CIVIL ENGINEER USING SPECIFIC SITE AND WIND LOAD INFORMATION

ELECTRICAL DETAILS AND SPECIFICATIONS SHOWN IN THIS DRAWINGS ARE FOR REPRESENTATIONAL PURPOSES ONLY.




LETTER COLOR DETAIL



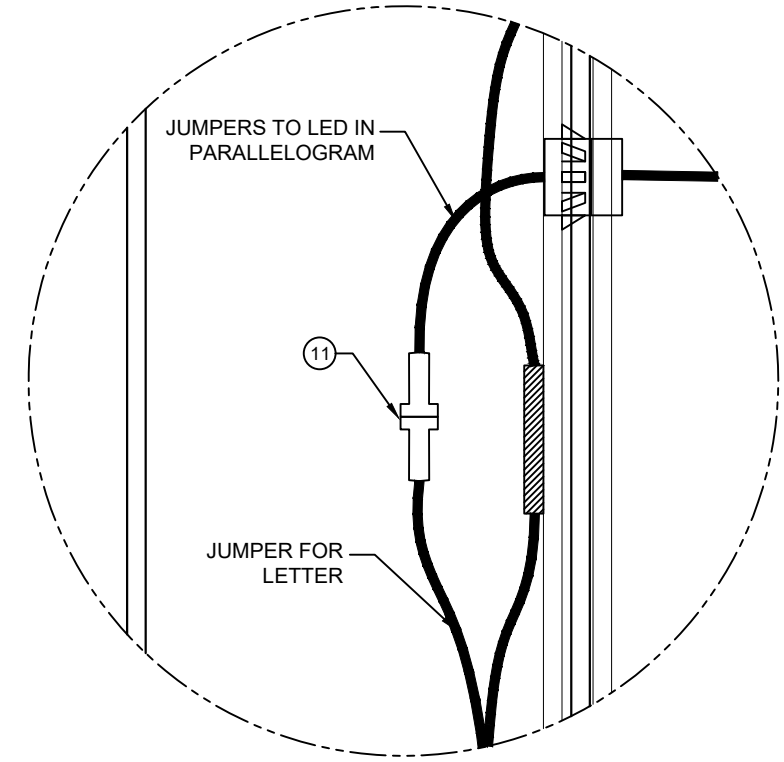
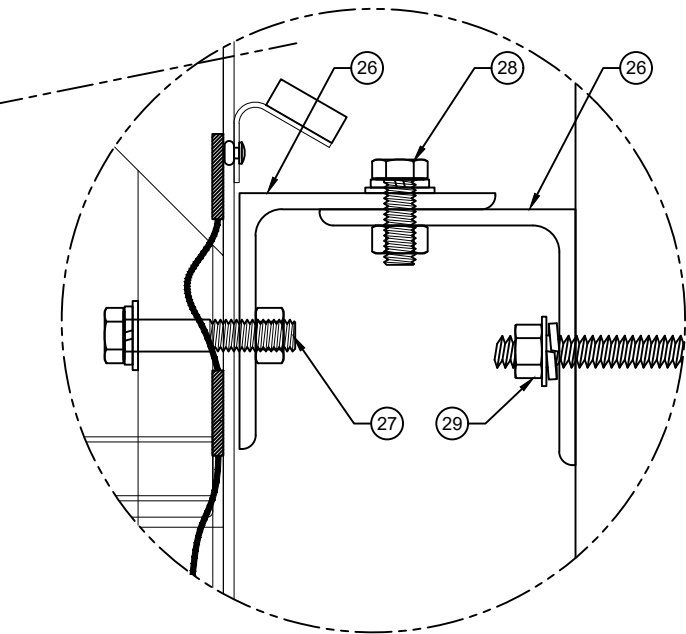
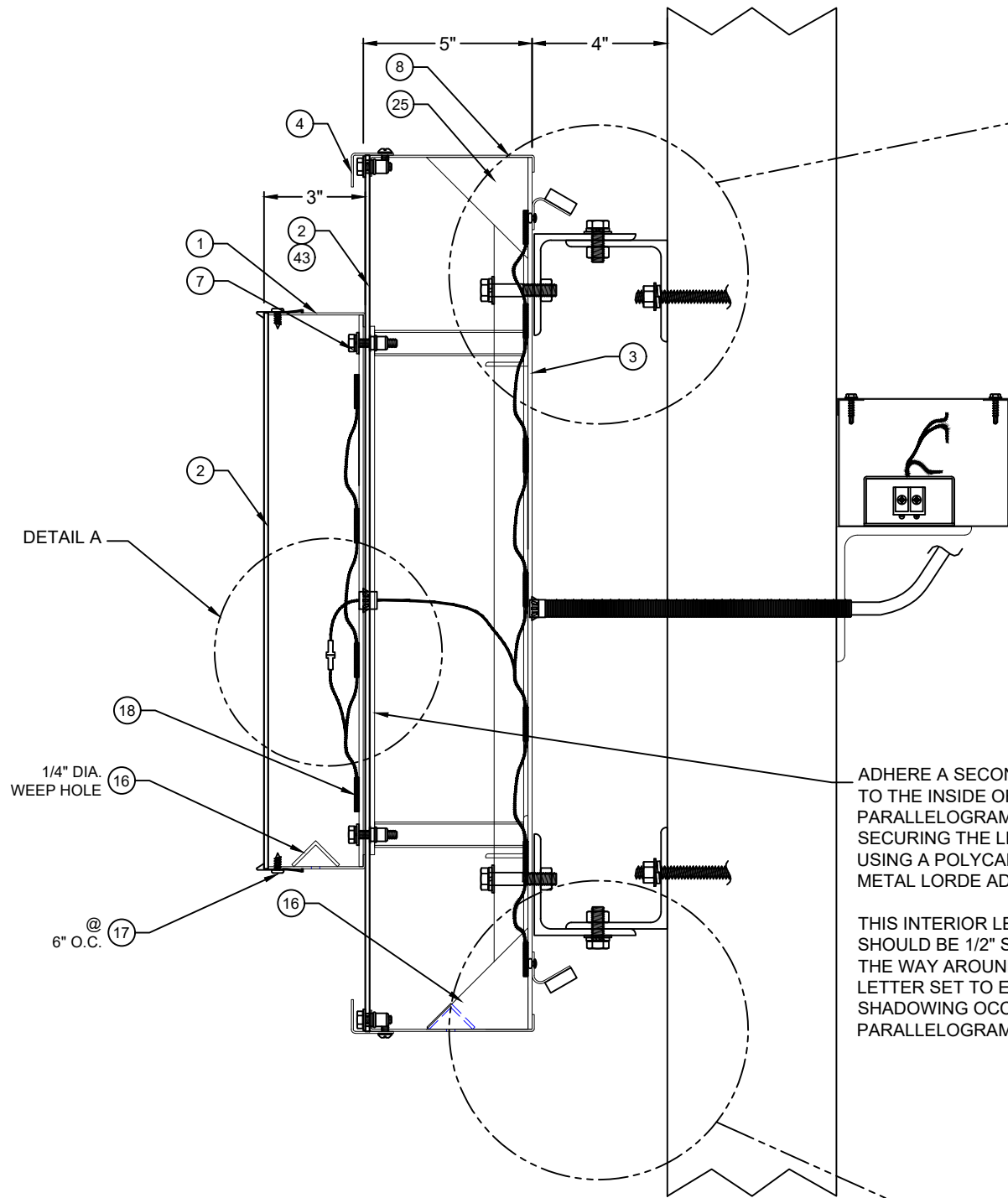
PARALLELOGRAM COLOR DETAIL

SIGN DISCONNECT NOTE:
UL RATED CIRCUITED BREAKER LOCK-OUT DEVISE FOR SECONDARY SIGN DISCONNECT TO BE INSTALLED AT DESIGNATED SIGN BREAKER IN MAIN PANEL AND SWITCHED OFF WHEN SERVICING SIGN.

- ELECTRICAL NOTES**
- All material and fasteners meet 3004.4
 - All electrical components are UL listed and approved.
 - Sign grounded according to NEC 600.7.
 - Signs manufactured and listed NEC 600.3 and marked per NEC 600.4.
 - All branch circuits per NEC 600.5(B).1 or (B).2.
 - All Signs controlled by photocell or time clock per NEC 2017, FBC 2014, 6th Edition.
 - One visible 20 amp disconnect per sign per circuit per NEC 600.6(A).1.
 - All Class 2 rated LED modules and LED power supplies will be in compliance with a nationally recognized test laboratory.

Drawn	BLR	Engineer:	 Elrod Engineering, LLC Certificate of Authorization: 30647 871 Seven Oaks Blvd., Suite 220 Smyrna, TN 37167 800-553-5111	CLIENT:	SIGN A: 40SF - ELECTRICAL RaceTrac TBD TBD	Revisions	Sheet No.
Checked	ERA	ERNEST ROBERTS ALLEY		RaceTrac			<h1>S-2.3</h1>
EAC Job#	100z3561	License Number:		200 Galleria Pkwy, Suite 900 Atlanta, GA 30339			
Filename	100x3561.dwg						
Created	9/10/2020						

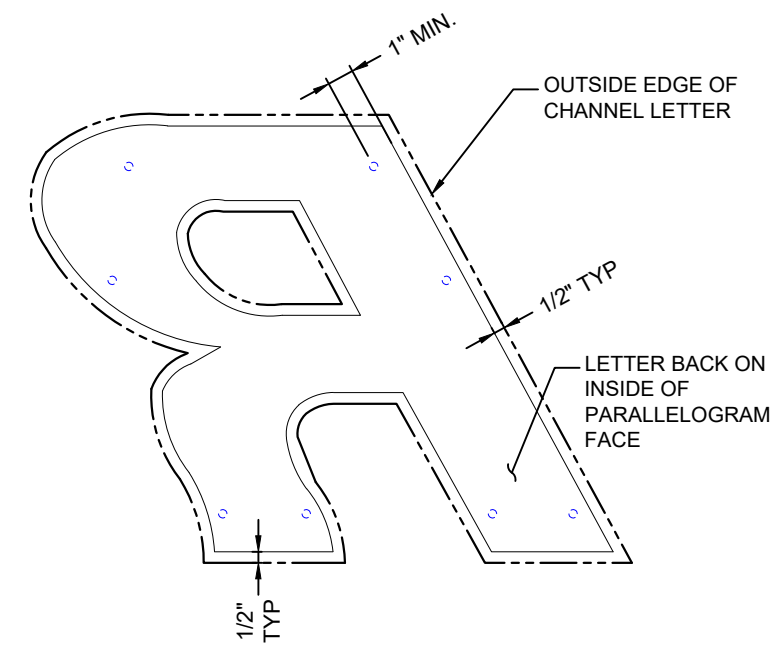
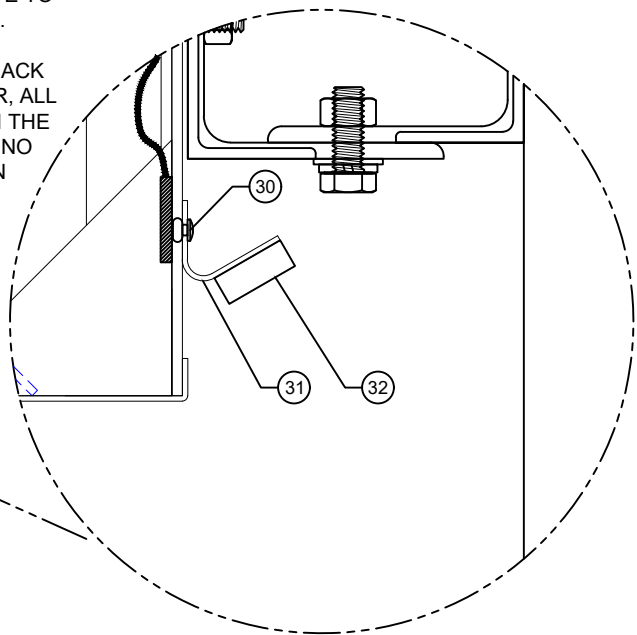
9/10/2020



DETAIL A

ADHERE A SECOND LETTER BACK TO THE INSIDE OF THE PARALLELOGRAM FACE FOR SECURING THE LETTERS TO USING A POLYCARBONATE TO METAL LORDE ADHESIVE.

THIS INTERIOR LETTER BACK SHOULD BE 1/2" SMALLER, ALL THE WAY AROUND, THAN THE LETTER SET TO ENSURE NO SHADOWING OCCURS ON PARALLELOGRAM FACE.



INTERIOR LETTER BACKING DETAIL

TYPICAL SECTION @ SUPPORTS (NTS)

ELECTRICAL DETAILS AND SPECIFICATIONS SHOWN IN THIS DRAWINGS ARE FOR REPRESENTATIONAL PURPOSES ONLY.

DETAIL A

1/4" DIA. WEEP HOLE

6" O.C.

Drawn	BLR
Checked	ERA
EAC Job#	100z3561
Filename	100x3561.dwg
Created	9/10/2020

Engineer:
ERNEST ROBERTS ALLEY
License Number:



Elrod Engineering, LLC
Certificate of Authorization: 30647
871 Seven Oaks Blvd., Suite 220
Smyrna, TN 37167
800-553-5111

CLIENT:
RaceTrac
200 Galleria Pkwy, Suite 900
Atlanta, GA 30339

SIGN A: 40SF - ELECTRICAL
RaceTrac
TBD
TBD

Revisions	

Sheet No.
S-2.4

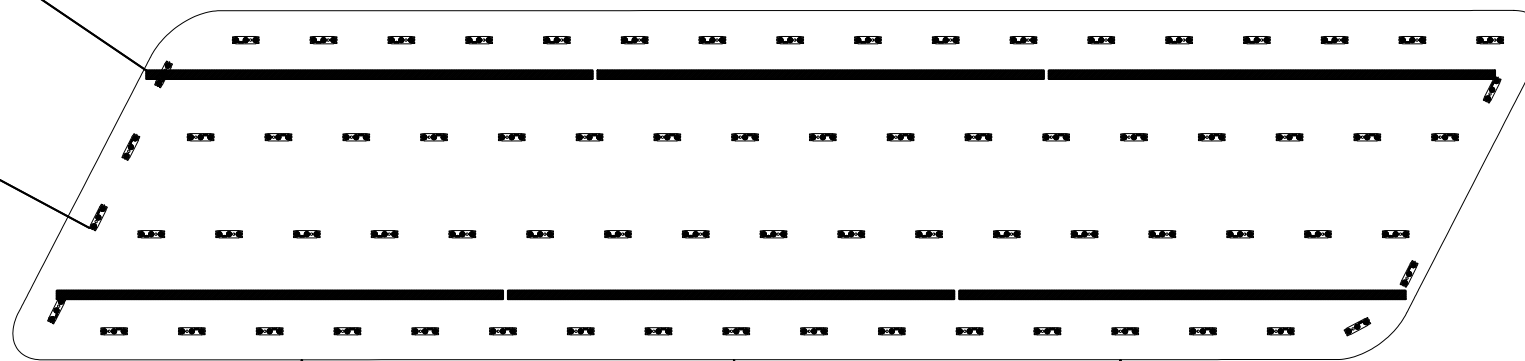
9/10/2020

SLOAN SLIMLINEAR
WHITE LED'S
ON BACK OF SIGN

PRISM LEDS

NOTE:
EACH INDIVIDUAL LETTER TO BE
GROUNDED

LED ELECTRICAL CHART							
LTR.	WHITE LED	TRANSFORMER	AMPS	20 AMP			
BG PNL	74	2	2.0				
R	8	1	1.0	1			
a	7						
c	5						
e	6						
T	5						
r	3						
a	7						
c	5						
HALO	6				1	1.0	
TOTAL	9				126	4	4.0

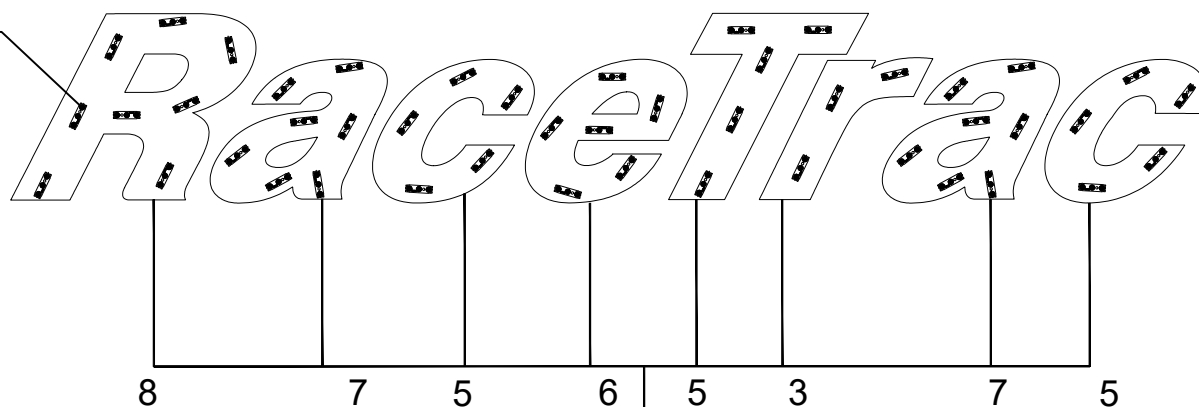


6 SLOAN (19) 12V 60W POWER SUPPLY FOR SLIMLINE

37 SLOAN (19) 12V 60W POWER SUPPLY

37 SLOAN (19) 12V 60W POWER SUPPLY

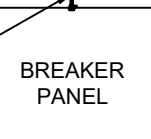
PRISM LEDS



(19) SLOAN 12V 60W POWER SUPPLY PRISM LED MODULES

UL 20 AMP/120 VAC DISCONNECT SWITCH INSIDE UL WEATHERPROOF JUNCTION (SEE SHEETS 2.2, 2.3, & 2.4 FOR APPROXIMATE PLACEMENT)

120 VAC INPUT FROM BREAKER OR DISCONNECT SWITCH TO POWER SUPPLIES



NOTE:
MANUFACTURER TO FOLLOW LED LAYOUT EXACTLY. PLEASE USE 18 GAUGE WIRE FOR LED JUMPS WHEN NEEDED. THIS IS TO ENSURE PROPER EVEN ILLUMINATION.

NOTE:
MANUFACTURER TO FOLLOW LED LAYOUT EXACTLY WHERE TO PLACE ELECTRICAL HOLES TO ENSURE PROPER EVEN ILLUMINATION.

ELECTRICAL INSTALLATION KIT

- AN ELECTRICAL INSTALLATION KIT TO BE INCLUDED WITH ALL LETTERSETS SHIPPED. THESE SHALL INCLUDE;
1. (1) MOUNTING PATTERN
 2. (30') WATERPROOF CONDUIT
 3. (2) JUNCTION BOXES
 4. (20) CONDUIT CONNECTORS
 5. (1+) TRANSFORMER BOX WITH POWER SUPPLIES

NOTE:
(3) SLOAN 12V 60W - 120-277V INPUT POWER SUPPLIES @ 0.70 AMPS EACH ARE REQUIRED. THIS SIGN HAS A TOTAL OF 2.1 AMPS. AND WILL REQUIRE (1) 20 AMP CIRCUIT

ELECTRICAL NOTES

1. All material and fasteners meet 3004.4
2. All electrical components are UL listed and approved.
3. Sign grounded according to NEC 600.7.
4. Signs manufactured and listed NEC 600.3 and marked per NEC 600.4.
5. All branch circuits per NEC 600.5(B).1 or (B).2.
6. All Signs controlled by photocell or time clock per NEC 2017, FBC 2014, 6th Edition.
7. One visible 20 amp disconnect per sign per circuit per NEC 600.6(A).1.
8. All Class 2 rated LED modules and LED power supplies will be in compliance with a nationally recognized test laboratory.

SIGN DISCONNECT NOTE:
UL RATED CIRCUITED BREAKER LOCK-OUT DEVISE FOR SECONDARY SIGN DISCONNECT TO BE INSTALLED AT DESIGNATED SIGN BREAKER IN MAIN PANEL AND SWITCHED OFF WHEN SERVICING SIGN.

ELECTRICAL DETAILS AND SPECIFICATIONS SHOWN IN THIS DRAWINGS ARE FOR REPRESENTATIONAL PURPOSES ONLY.

FRONT ELEVATION @ LED LAYOUT
(SEE ELECTRICAL CHART)

Drawn	BLR
Checked	ERA
EAC Job#	100z3561
Filename	100x3561.dwg
Created	9/10/2020

Engineer:
ERNEST ROBERTS ALLEY
License Number:



Elrod Engineering, LLC
Certificate of Authorization: 30647
871 Seven Oaks Blvd., Suite 220
Smyrna, TN 37167
800-553-5111

CLIENT:
RaceTrac
200 Galleria Pkwy, Suite 900
Atlanta, GA 30339

SIGN A: 40SF - ELECTRICAL
RaceTrac
TBD
TBD

Revisions	

Sheet No.
S-2.5

9/10/2020