

# PRESTIGE





Prestige - FH203



Prestige - NC203

# PRESTIGE

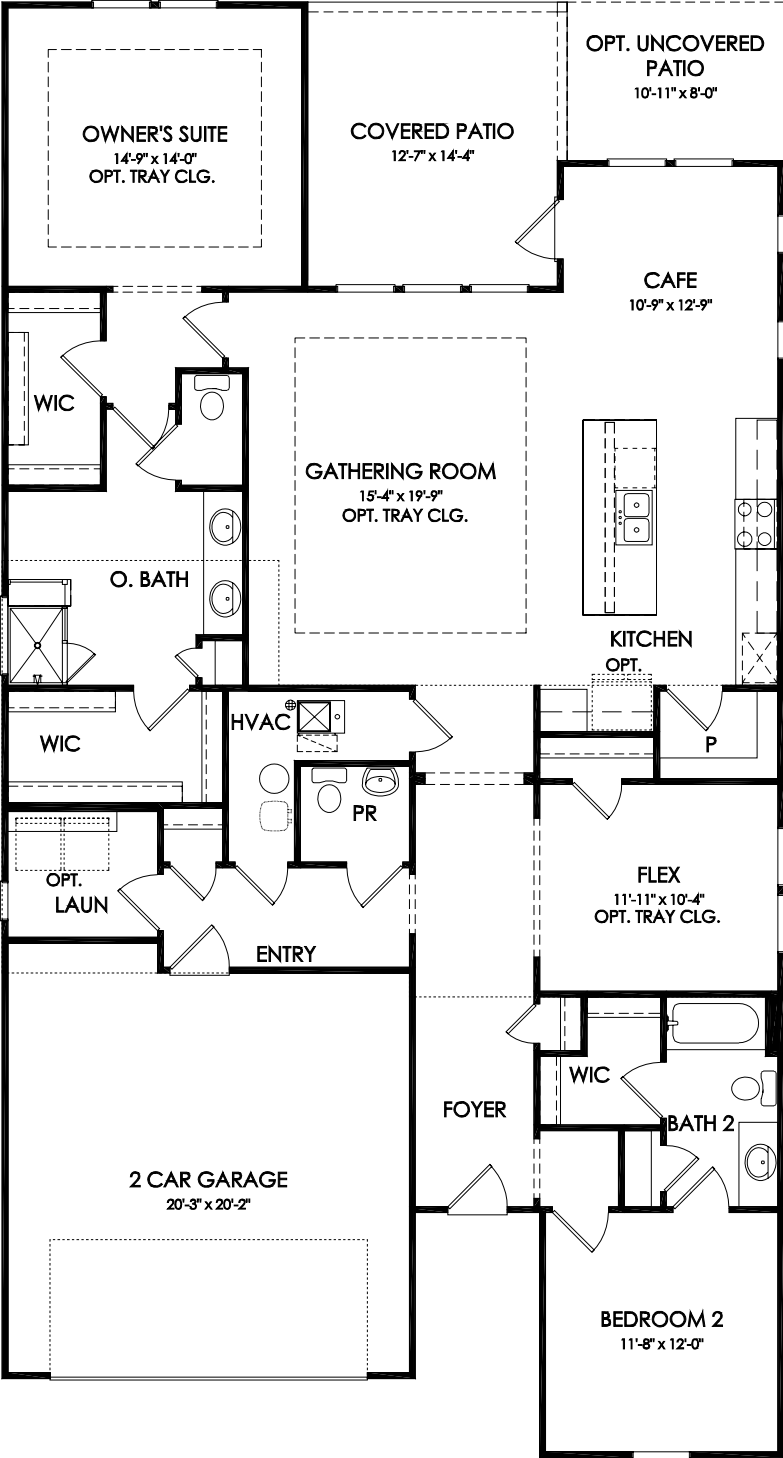
2-4 Bedrooms | 2-3 Bathrooms | 2,026+ sq. ft.  
Flex Space | Oversized Kitchen Island | His & Hers Closets



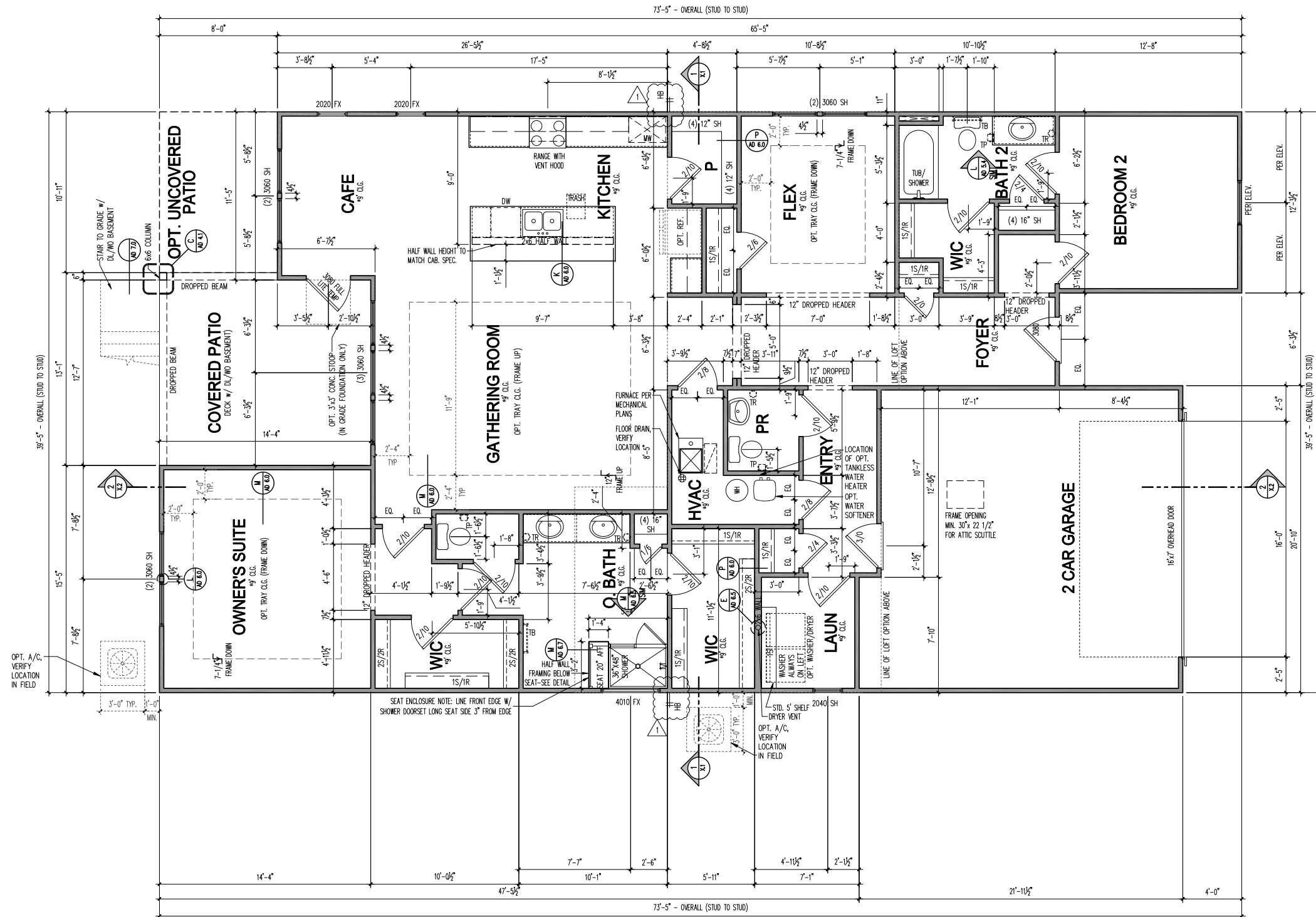
Del Webb®

# PRESTIGE

Visit [DelWebb.com](http://DelWebb.com) for more information and to view the Interactive Floorplan.







**FIRST FLOOR PLAN - 2x4 EXTERIOR WALLS**

SCALE: 1/4" = 1'-0"

**LIGHT & VENT SCHEDULE**

ROOM NAME	AREA (SF)	LIGHT 8%		VENT 4%		MECH (CFM)	
		REQ	ACT	REQ	ACT	REQ	ACT
KITCHEN / CAFE / GATHERING	642.1	51.4	68.5	25.7	29.5	---	---
BATH 2	65.4	---	---	---	---	76.5	80
OWNER'S SUITE	238.4	19.1	27.4	9.5	11.8	---	---
OWNER'S BATH	147.8	11.8	5.2	5.9	2.1	172.9	120
BEDROOM 2	141.5	11.3	13.7	5.7	5.9	---	---
FLEX	125	10.0	13.7	5.0	5.9	146.3	200
LAUNDRY	47.8	3.8	5.2	1.9	2.1	55.9	80
BEDROOM 4	121.9	9.8	23.4	4.9	11.8	---	---
BATH 3	52.6	---	---	---	---	54.7	60
LOFT	234.2	18.7	23.4	9.4	11.8	---	---
SUNROOM	181.4	14.5	48.4	7.3	24.9	---	---
BEDROOM 7	169.4	13.6	11.9	6.8	5.2	176.2	---
BATH 7	46.8	---	---	---	---	48.7	60

\* ARTIFICIAL LIGHT AND/OR MECHANICAL VENTILATION SUPPLIED  
 \*\* BATH FAN REQ. L/W/H OF ROOM x 0.13 = MIN. CFM RATING REQUIRED  
 THE TABLE ABOVE SHOWS CALCULATIONS THAT APPLY FOR ALL ELEVATIONS, U.N.O.

**SQUARE FOOTAGES**

<b>BASE HOUSE - HEATED</b>	
FIRST FLOOR	2027
SECOND FLOOR	0
<b>TOTAL BASE HEATED</b>	<b>2027</b>
<b>BASE HOUSE - UNDER ROOF</b>	
GARAGE - 2 CAR FRONT ENTRY	491
COVERED PATIO	184
<b>TOTAL BASE UNDER ROOF</b>	<b>2702</b>
<b>OPTIONS</b>	
SECOND FLOOR	655
BASEMENT	1890

**North Area**  
 1900 E. Golf Road, - Suite 300  
 Schaumburg, Illinois 60173



**First Floor Plan**  
 2x4 Exterior Walls

PRODUCTION MANAGER  
 Rick Stophrey  
 INITIAL RELEASE DATE:  
 09/30/2020  
 CURRENT RELEASE DATE:  
 09/30/2020

REV #	DATE / DESCRIPTION
1	04/30/2021
2	PCR REVISIONS
3	
4	
5	
6	
7	
8	
9	
10	

GARAGE HANDING  
**GARAGE LEFT**

PLAN NAME  
**PRESTIGE**  
 NRC PLAN NUMBER  
**2697.300**  
 LAWSON PLAN ID

SHEET  
**A1**  
**4-1.1**

NOTE: SCALES NOTED ON DRAWINGS RELATE TO FULL SIZE PLOTS ON 22x34 SHEETS - 11x17 SHEETS REPRESENT 1/2 SCALE PLOTS

(c) Copyright Putte Home Corporation - 2021

REV #	DATE / DESCRIPTION
1	04/30/2021
2	PCR REVISIONS
3	
4	
5	
6	
7	
8	
9	
10	

GARAGE HANDING  
**GARAGE LEFT**

PLAN NAME  
**PRESTIGE**  
 NRC PLAN NUMBER  
**2697.300**  
 LAWSON PLAN ID

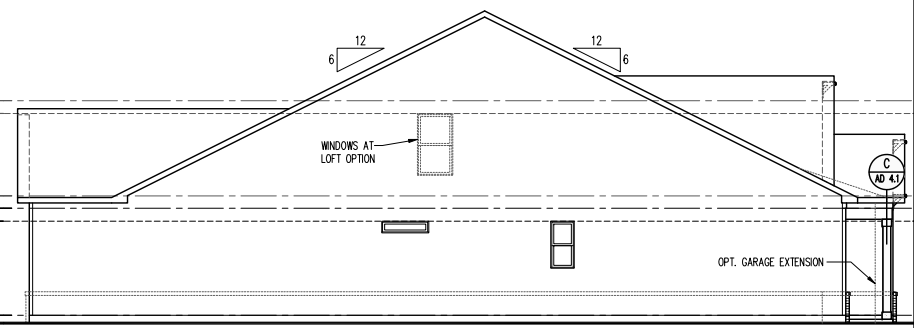
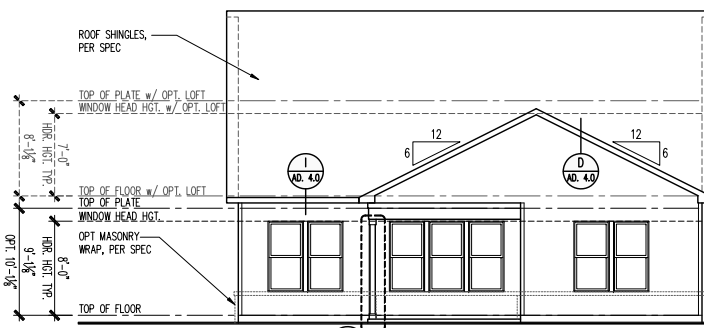
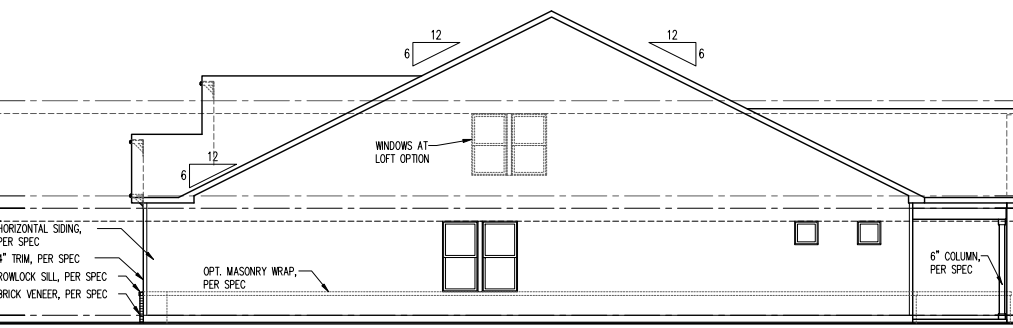
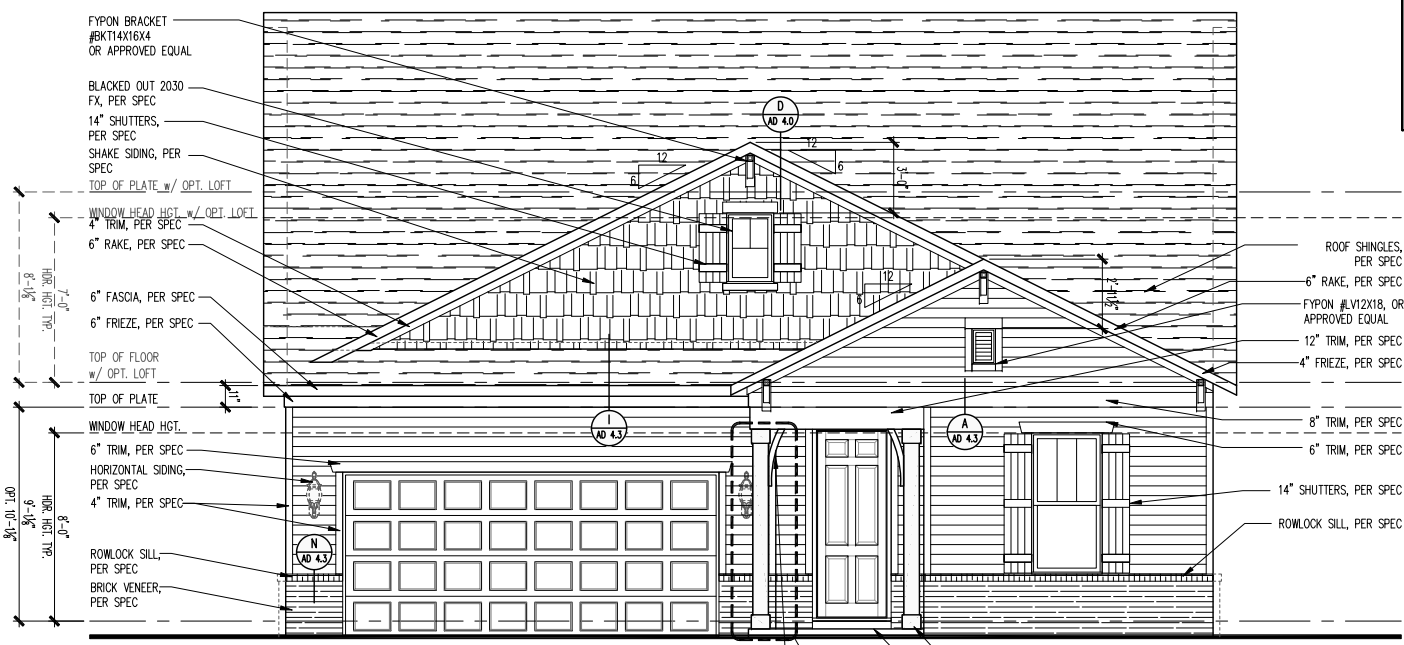
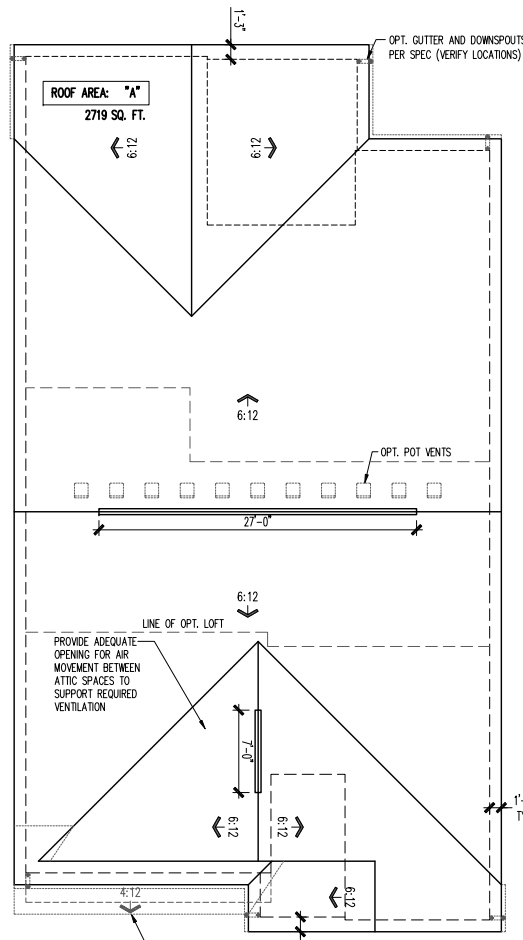
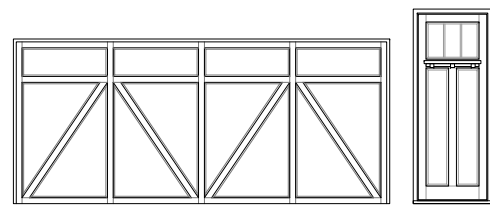
SHEET  
**A3-CR101**  
**2FS.1**

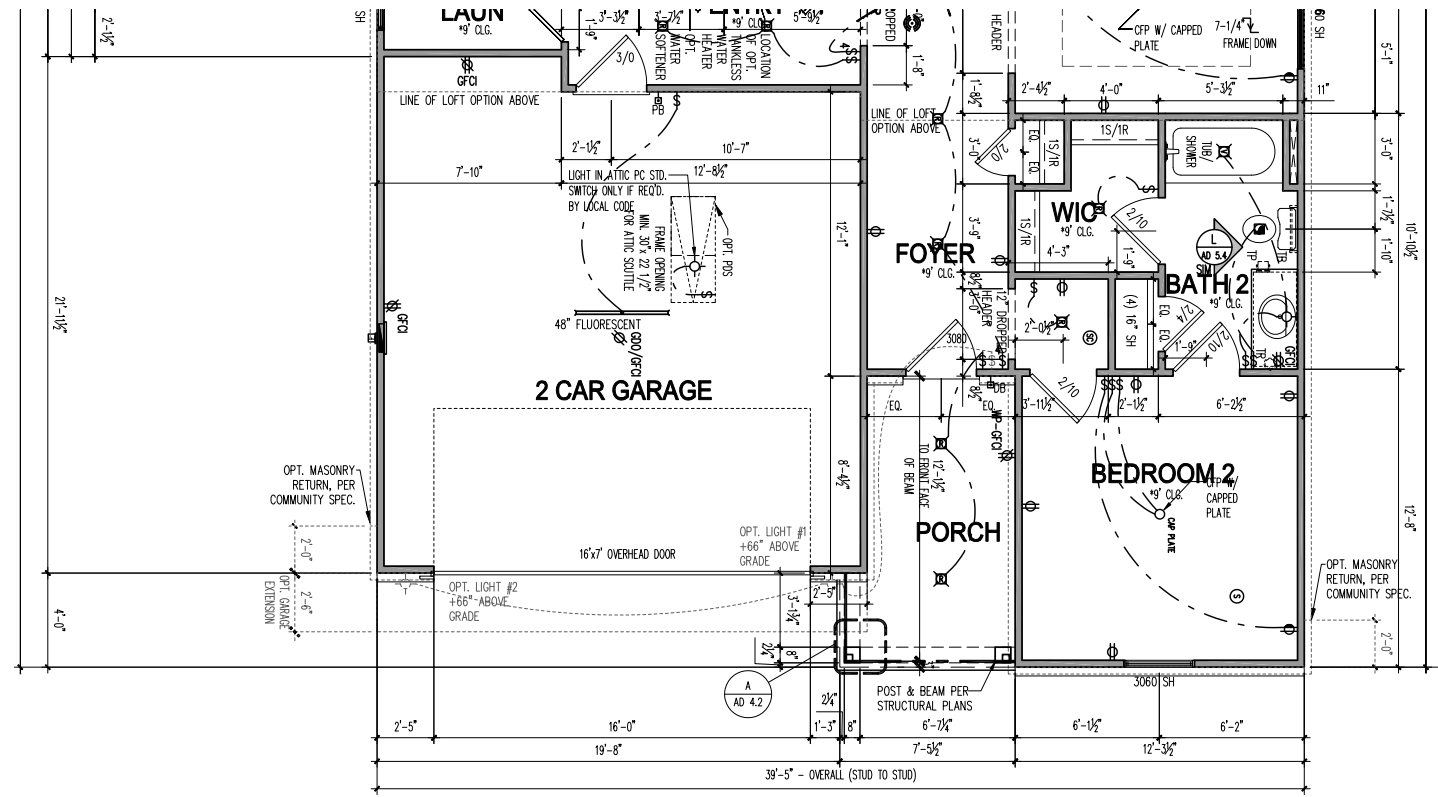
ATTIC VENT SCHEDULE			
CR101 2-CAR FRONT ENTRY	ROOF AREA 'A'	ROOF AREA 'B'	ROOF AREA 'C'
<b>ATTIC AREA (SF)</b>	2719		
<b>TOTAL NET FREE VENTED AREA REQ.</b>	1305 IN <sup>2</sup>		
<b>LOW - REQUIRED (**)</b>	653 IN <sup>2</sup>		
<b>LOW - ACTUAL w/ EAVE VENTS (***)</b>	672 IN <sup>2</sup> 24 EAVE VENTS		
<b>LOW - ACTUAL w/ CONTINUOUS VENTED SOFFITS (***)</b>	640 IN <sup>2</sup> 66 LINEAR FEET		
<b>HIGH - REQUIRED (**)</b>	653 IN <sup>2</sup>		
<b>HIGH - ACTUAL w/ POT VENTS (***)</b>	671 IN <sup>2</sup> 11 VENTS		
<b>HIGH - ACTUAL w/ CONT. RIDGE VENTS (***)</b>	666 IN <sup>2</sup> 37 LF		

\* REQUIRED NET FREE VENTED AREA IS CALCULATED BY MULTIPLYING THE ATTIC AREA (FT<sup>2</sup>) BY 1/300 AND THEN MULTIPLYING BY 144 (CONVERTING FT<sup>2</sup> TO IN<sup>2</sup>). 50% OF TOTAL NET FREE VENTED AREA IS REQUIRED NEAR THE RIDGE (HIGH) AND 50% IS REQUIRED AT THE SOFFIT (LOW). WHEN BOTH (HIGH) & (LOW) ARENT PROVIDED, THE REQ'D NET FREE AREA IS 1/150 OF THE ACTUAL AREA INSTEAD.

\*\* ACTUAL NET FREE VENTED SOFFIT AREA IS CALCULATED BY DIVIDING THE REQUIRED (LOW) AREA BY THE MFRS STATED ACTUAL VENTED NET FREE AREA PER VENT:  
 LOW OPT 1: EAVE VENTS = 28.0 IN<sup>2</sup>/VENT (OR)  
 LOW OPT 2: CONT. VENTED SOFFITS = 10.0 IN<sup>2</sup>/LINEAR FT

\*\*\* ACTUAL NET FREE VENTED RIDGE AREA IS CALCULATED BY DIVIDING THE REQUIRED (HIGH) AREA BY THE MFRS STATED ACTUAL VENTED NET AREA PER VENT:  
 HIGH OPT 1: POT ROOF VENTS = 61.0 IN<sup>2</sup>/VENT (OR)  
 HIGH OPT 2: CONT. RIDGE VENTS = 18.0 IN<sup>2</sup>/LINEAR FT





**FIRST FLOOR PLAN - 2x4 EXTERIOR WALLS**  
SCALE: 1/4" = 1'-0"

ROOM NAME	AREA (SF)	LIGHT 8%		VENT 4%		MECH (CFM)	
		REQ	ACT	REQ	ACT	REQ	ACT
KITCHEN / CAFE / GATHERING	642.1	51.4	68.5	25.7	29.5	---	---
BATH 2	65.4	---	---	---	---	76.5	80
OWNER'S SUITE	238.4	19.1	27.4	9.5	11.8	---	---
OWNER'S BATH	147.8	11.8	5.2	5.9	2.1	172.9	120
BEDROOM 2	141.5	11.3	13.7	5.7	5.9	---	---
FLEX	125	10.0	13.7	5.0	5.9	146.3	200
LAUNDRY	47.8	3.8	5.2	1.9	2.1	55.9	80
BEDROOM 4	121.9	9.8	23.4	4.9	11.8	---	---
BATH 3	52.6	---	---	---	---	54.7	60
LOFT	234.2	18.7	23.4	9.4	11.8	---	---
SUNROOM	181.4	14.5	48.4	7.3	24.9	---	---
BEDROOM 7	169.4	13.6	11.9	6.8	5.2	176.2	---
BATH 7	46.8	---	---	---	---	48.7	60

\* ARTIFICIAL LIGHT AND/OR MECHANICAL VENTILATION SUPPLIED  
 \*\* BATH FAN REQ: LWH of ROOM x 0.13 = MIN. CFM RATING REQUIRED  
 THE TABLE ABOVE SHOWS CALCULATIONS THAT APPLY FOR ALL ELEVATIONS, U.N.O.

SQUARE FOOTAGES	
<b>BASE HOUSE - HEATED</b>	
FIRST FLOOR	2027
SECOND FLOOR	0
<b>TOTAL BASE HEATED</b>	<b>2027</b>
<b>BASE HOUSE - UNDER ROOF</b>	
GARAGE - 2 CAR FRONT ENTRY	491
COVERED PATIO	184
<b>TOTAL BASE UNDER ROOF</b>	<b>2702</b>
<b>OPTIONS</b>	
SECOND FLOOR	655
BASEMENT	1890

ELEVATION CR101	
ADDITIONAL 1ST FLOOR - HEATED	0
TOTAL 1ST FLOOR	2027
ADDITIONAL 2ND FLOOR - HEATED	0
TOTAL 2ND FLOOR	0
<b>TOTAL ELEV. HEATED</b>	<b>2027</b>
ADDITIONAL GARAGE - 2 CAR FRONT	0
TOTAL GARAGE	491
COVERED PATIO	0
TOTAL COVERED PATIO	184
FRONT PORCH	83
<b>TOTAL ELEV. FOOTPRINT</b>	<b>2785</b>

**North Area**  
1900 E. Golf Road, - Suite 300  
Schaumburg, Illinois 60173



**CR101**  
2 Car Front Entry  
Partial Floor Plan - 2x4 Exterior Walls

PRODUCTION MANAGER  
Rick Stokley  
INITIAL RELEASE DATE:  
09/30/2020  
CURRENT RELEASE DATE:  
09/30/2020

REV #	DATE / DESCRIPTION
1	04/30/2021
2	PCR REVISIONS
3	
4	
5	
6	
7	
8	
9	
10	

GARAGE HANDING  
**GARAGE LEFT**

PLAN NAME  
**PRESTIGE**  
NRC PLAN NUMBER  
**2697.300**  
LAWSON PLAN ID  
-

SHEET  
**A3-CR101**  
**2FS4.3**

NOTE: SCALES NOTED ON DRAWINGS RELATE TO FULL SIZE PLOTS ON 22x34 SHEETS - 11x17 SHEETS REPRESENT 1/2 SCALE PLOTS (c) Copyright Putte Home Corporation - 2021

REV #	DATE / DESCRIPTION
1	04/30/2021 PCR REVISIONS
2	
3	
4	
5	
6	
7	
8	
9	
10	

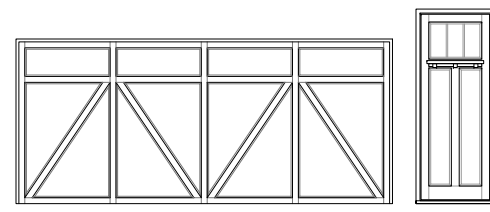
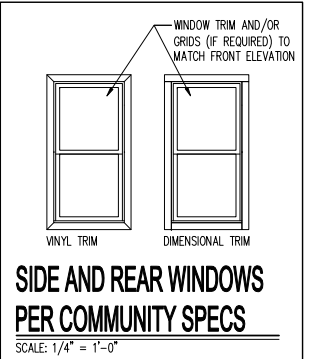
GARAGE HANDING  
**GARAGE LEFT**

PLAN NAME  
**PRESTIGE**  
 NRC PLAN NUMBER  
**2697.300**  
 LAWSON PLAN ID

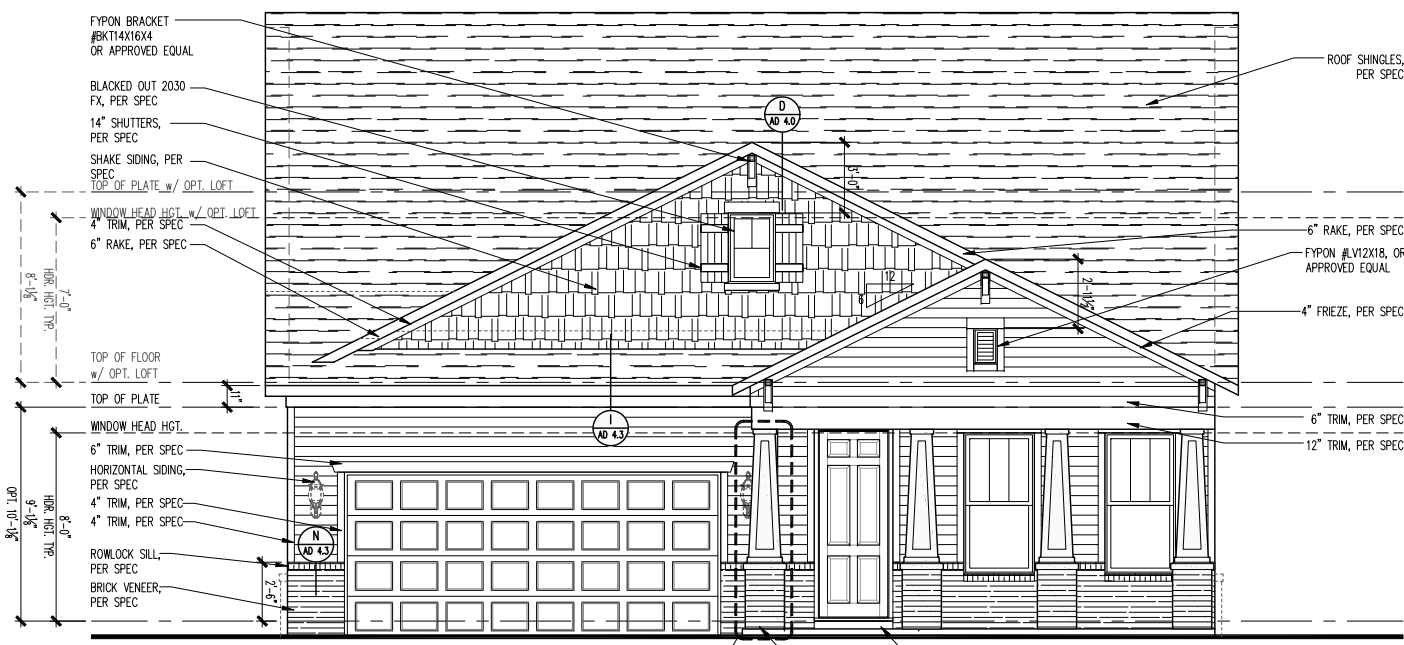
SHEET  
**A3-CR201**  
**2FS.1**

ATTIC VENT SCHEDULE			
CR201 2-CAR FRONT ENTRY	ROOF AREA 'A'	ROOF AREA 'B'	ROOF AREA 'C'
<b>ATTIC AREA (SF)</b>	2832		
<b>TOTAL NET FREE VENTED AREA REQ.</b>	1359 IN <sup>2</sup>		
<b>LOW - REQUIRED (*)</b>	680 IN <sup>2</sup>		
<b>LOW - ACTUAL w/ EAVE VENTS (**)</b>	700 IN <sup>2</sup> 25 EAVE VENTS		
<b>LOW - ACTUAL w/ CONTINUOUS VENTED SOFFITS (**)</b>	680 IN <sup>2</sup> 68 LINEAR FEET		
<b>HIGH - REQUIRED (*)</b>	680 IN <sup>2</sup>		
<b>HIGH - ACTUAL w/ POT VENTS (***)</b>	732 IN <sup>2</sup> 12 VENTS		
<b>HIGH - ACTUAL w/ CONT. RIDGE VENTS (***)</b>	684 IN <sup>2</sup> 38 LF		

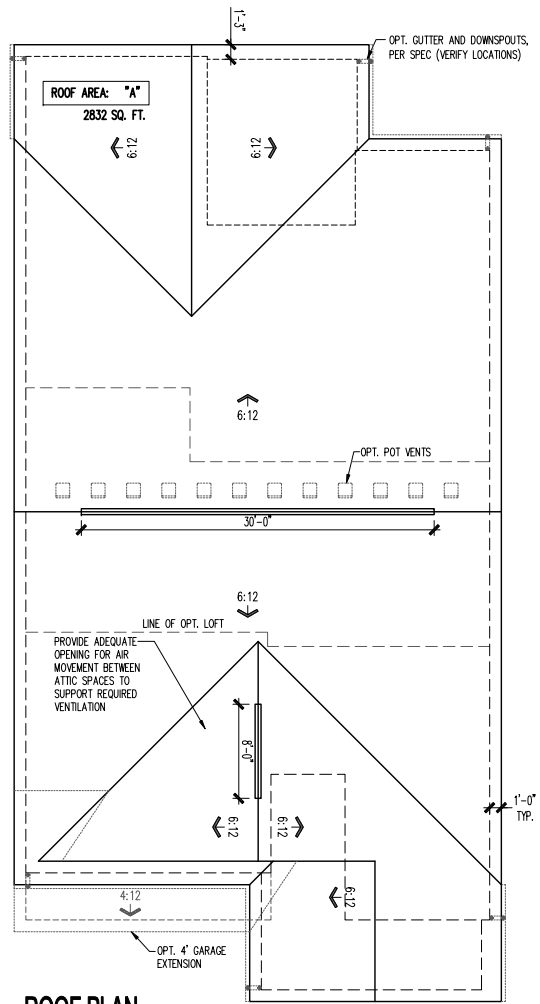
\* REQUIRED NET FREE VENTED AREA IS CALCULATED BY MULTIPLYING THE ATTIC AREA (FT<sup>2</sup>) BY 1/300 AND THEN MULTIPLYING BY 144 (CONVERTING FT<sup>2</sup> TO IN<sup>2</sup>). 50% OF TOTAL NET FREE VENTED AREA IS REQUIRED NEAR THE RIDGE (HIGH) AND 50% IS REQUIRED AT THE SOFFIT (LOW). WHEN BOTH (HIGH) & (LOW) ARE NOT PROVIDED, THE REQ'D NET FREE AREA IS 1/150 OF THE ACTUAL AREA INSTEAD.  
 \*\* ACTUAL NET FREE VENTED SOFFIT AREA IS CALCULATED BY DIVIDING THE REQUIRED (LOW) AREA BY THE MFRS STATED ACTUAL VENTED NET FREE AREA PER VENT:  
 LOW OPT 1: EAVE VENTS = 28.0 IN<sup>2</sup>/VENT (OR)  
 LOW OPT 2: CONT. VENTED SOFFITS = 10.0 IN<sup>2</sup>/LINEAR FT  
 \*\*\* ACTUAL NET FREE VENTED RIDGE AREA IS CALCULATED BY DIVIDING THE REQUIRED (HIGH) AREA BY THE MFRS STATED ACTUAL VENTED NET AREA PER VENT:  
 HIGH OPT 1: POT ROOF VENTS = 61.0 IN<sup>2</sup>/VENT (OR)  
 HIGH OPT 2: CONT. RIDGE VENTS = 18.0 IN<sup>2</sup>/LINEAR FT



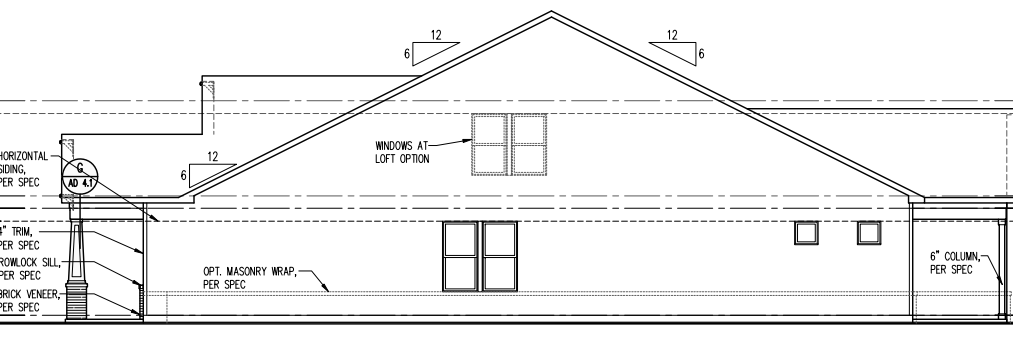
**UPGRADED DOOR OPTION**  
 SCALE: 1/4" = 1'-0"



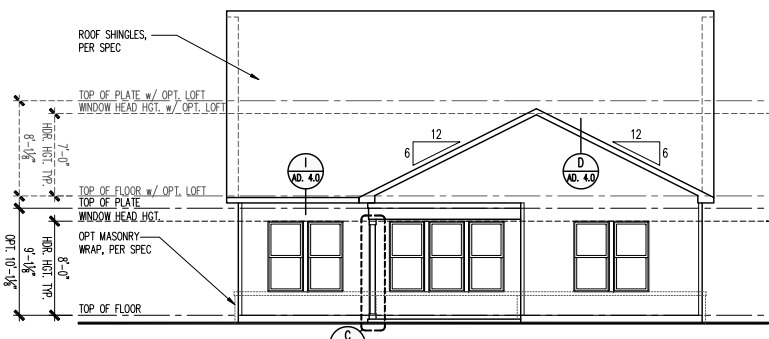
**FRONT ELEVATION**  
 SCALE: 1/4" = 1'-0"



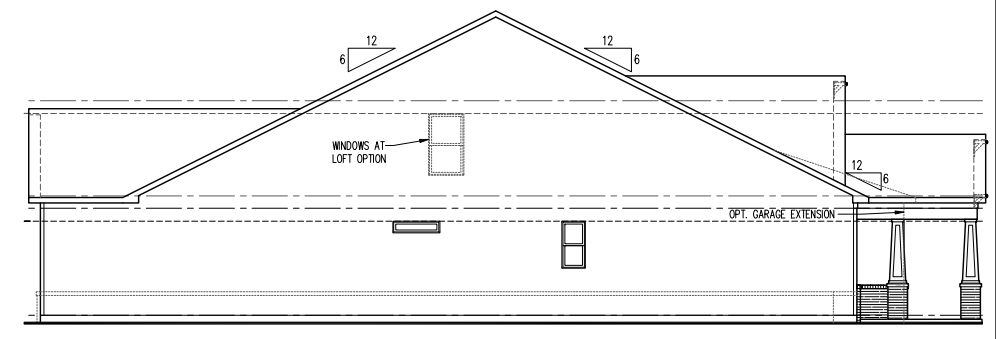
**ROOF PLAN**  
 SCALE: 1/8" = 1'-0"



**RIGHT ELEVATION**  
 SCALE: 1/8" = 1'-0"



**REAR ELEVATION**  
 SCALE: 1/8" = 1'-0"



**LEFT ELEVATION**  
 SCALE: 1/8" = 1'-0"



REV #	DATE / DESCRIPTION
1	04/30/2021 PCR REVISIONS
2	
3	
4	
5	
6	
7	
8	
9	
10	

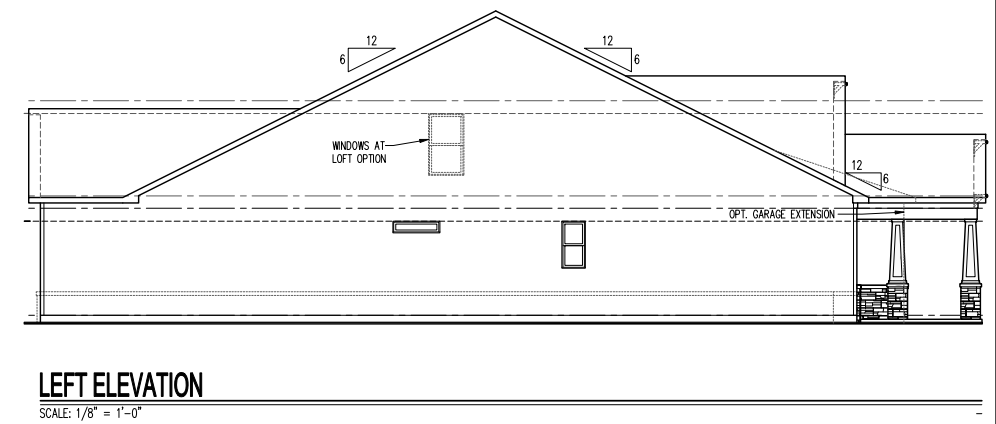
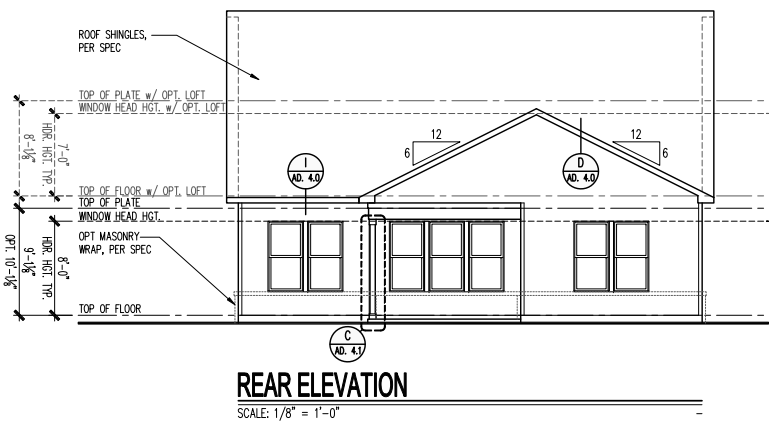
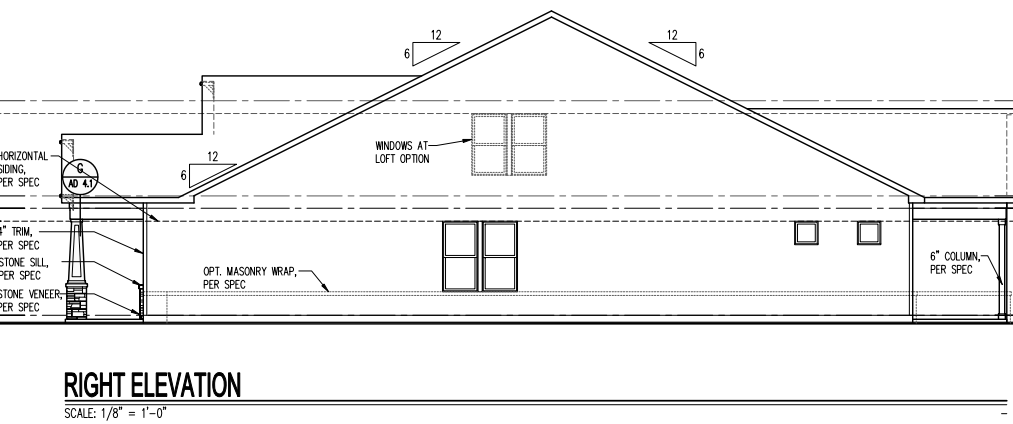
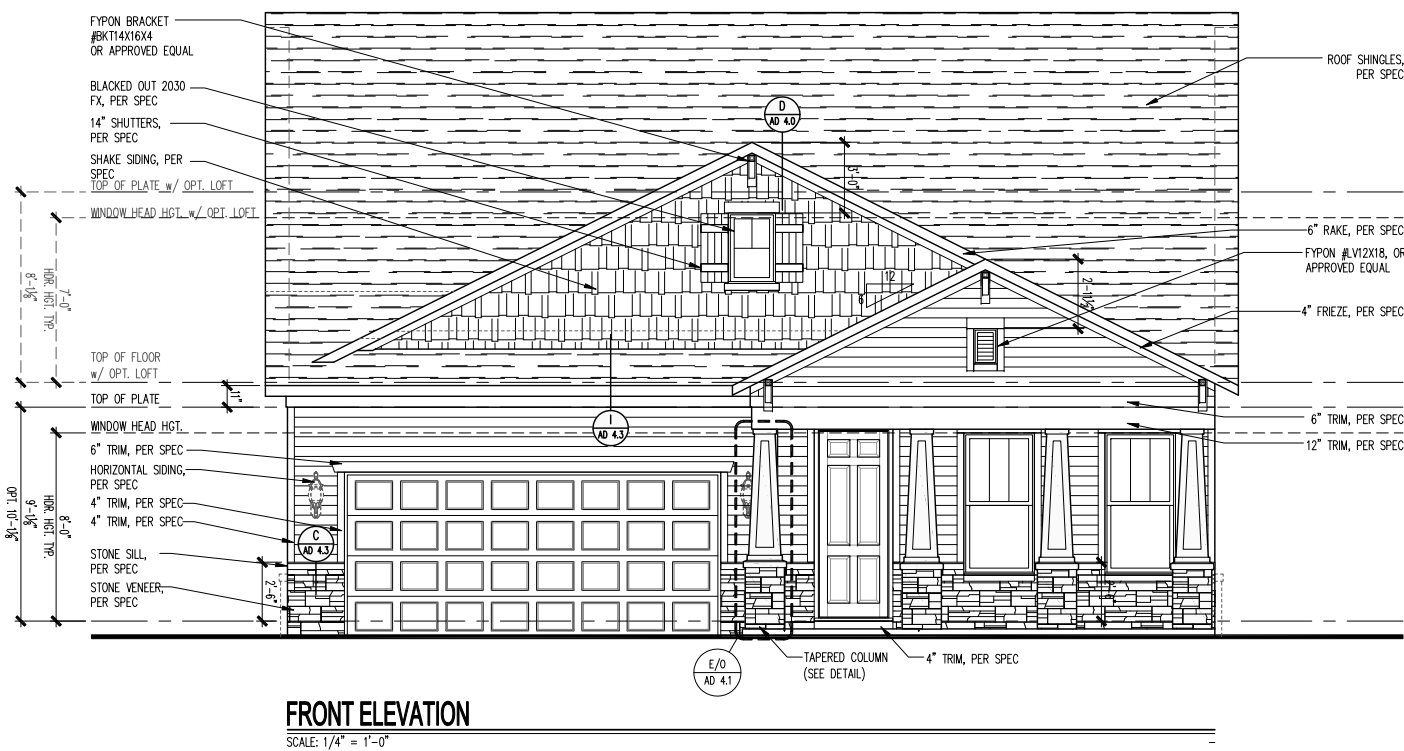
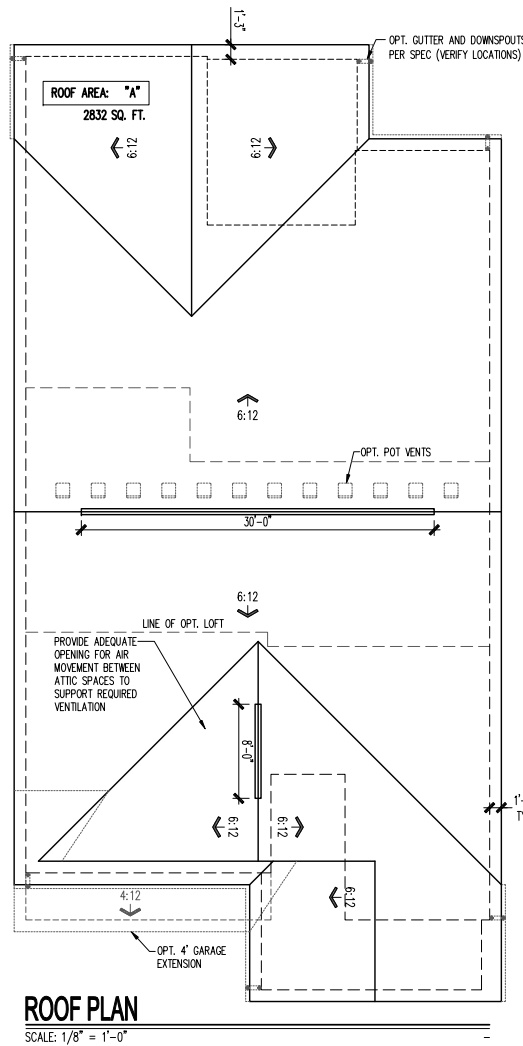
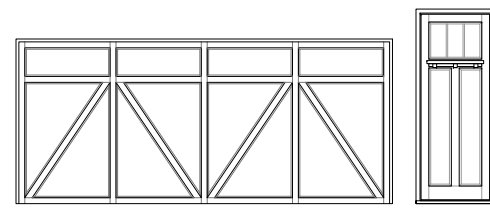
GARAGE HANDING  
**GARAGE LEFT**

PLAN NAME  
**PRESTIGE**  
 NRC PLAN NUMBER  
**2697.300**  
 LAWSON PLAN ID

SHEET  
**A3-CR202**  
**2FS.1**

ATTIC VENT SCHEDULE			
CR202 2-CAR FRONT ENTRY	ROOF AREA 'A'	ROOF AREA 'B'	ROOF AREA 'C'
<b>ATTIC AREA (SF)</b>	2832		
<b>TOTAL NET FREE VENTED AREA REQ.</b>	1359 IN <sup>2</sup>		
<b>LOW - REQUIRED (*)</b>	680 IN <sup>2</sup>		
<b>LOW - ACTUAL w/ EAVE VENTS (**)</b>	700 IN <sup>2</sup> 25 EAVE VENTS		
<b>LOW - ACTUAL w/ CONTINUOUS VENTED SOFFITS (**)</b>	680 IN <sup>2</sup> 68 LINEAR FEET		
<b>HIGH - REQUIRED (*)</b>	680 IN <sup>2</sup>		
<b>HIGH - ACTUAL w/ POT VENTS (***)</b>	732 IN <sup>2</sup> 12 VENTS		
<b>HIGH - ACTUAL w/ CONT. RIDGE VENTS (***)</b>	684 IN <sup>2</sup> 38 LF		

\* REQUIRED NET FREE VENTED AREA IS CALCULATED BY MULTIPLYING THE ATTIC AREA (FT<sup>2</sup>) BY 1/300 AND THEN MULTIPLYING BY 144 (CONVERTING FT<sup>2</sup> TO IN<sup>2</sup>). 50% OF TOTAL NET FREE VENTED AREA IS REQUIRED NEAR THE RIDGE (HIGH) AND 50% IS REQUIRED AT THE SOFFIT (LOW). WHEN BOTH (HIGH) & (LOW) ARENT PROVIDED, THE REQ'D NET FREE AREA IS 1/150 OF THE ACTUAL AREA INSTEAD.  
 \*\* ACTUAL NET FREE VENTED SOFFIT AREA IS CALCULATED BY DIVIDING THE REQUIRED (LOW) AREA BY THE MFRS STATED ACTUAL VENTED NET FREE AREA PER VENT:  
 LOW OPT 1: EAVE VENTS = 28.0 IN<sup>2</sup>/VENT (OR)  
 LOW OPT 2: CONT. VENTED SOFFITS = 10.0 IN<sup>2</sup>/LINEAR FT  
 \*\*\* ACTUAL NET FREE VENTED RIDGE AREA IS CALCULATED BY DIVIDING THE REQUIRED (HIGH) AREA BY THE MFRS STATED ACTUAL VENTED NET AREA PER VENT:  
 HIGH OPT 1: POT ROOF VENTS = 61.0 IN<sup>2</sup>/VENT (OR)  
 HIGH OPT 2: CONT. RIDGE VENTS = 18.0 IN<sup>2</sup>/LINEAR FT



PLOTTED: April 27, 2021 / User: 886 / A3-CR202 2FS.1.DWG

NOTE: SCALES NOTED ON DRAWINGS RELATE TO FULL SIZE PLOTS ON 22x34 SHEETS - 11x17 SHEETS REPRESENT 1/2 SCALE PLOTS

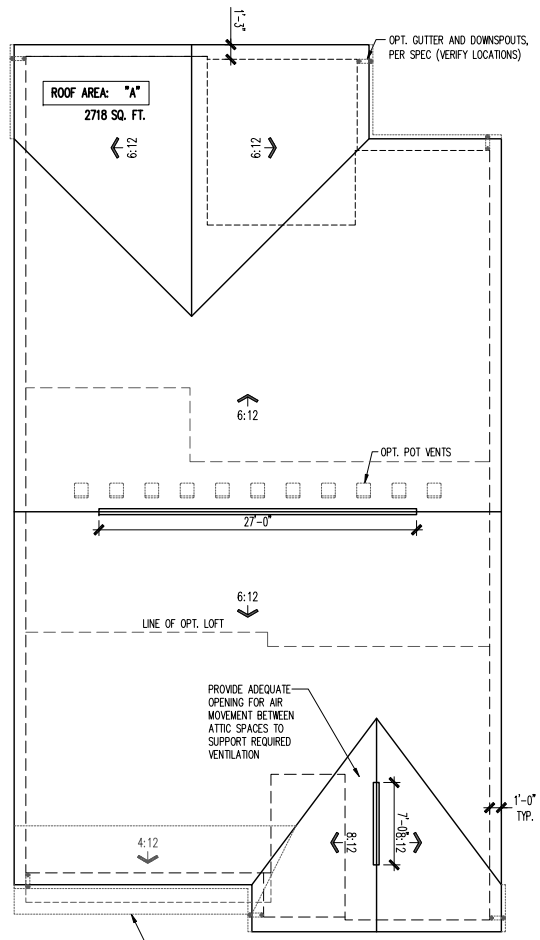


ATTIC VENT SCHEDULE			
HR101 2-CAR FRONT ENTRY	ROOF AREA 'A'	ROOF AREA 'B'	ROOF AREA 'C'
ATTIC AREA (SF)	2718		
TOTAL NET FREE VENTED AREA REQ.	1305 IN <sup>2</sup>		
LOW - REQUIRED (*)	652 IN <sup>2</sup>		
LOW - ACTUAL w/ EAVE VENTS (**)	672 IN <sup>2</sup> 24 EAVE VENTS		
LOW - ACTUAL w/ CONTINUOUS VENTED SOFFITS (**)	640 IN <sup>2</sup> 66 LINEAR FEET		
HIGH - REQUIRED (*)	652 IN <sup>2</sup>		
HIGH - ACTUAL w/ POT VENTS (***)	671 IN <sup>2</sup> 11 VENTS		
HIGH - ACTUAL w/ CONT. RIDGE VENTS (***)	666 IN <sup>2</sup> 37 LF		

\* REQUIRED NET FREE VENTED AREA IS CALCULATED BY MULTIPLYING THE ATTIC AREA (FT<sup>2</sup>) BY 1/300 AND THEN MULTIPLYING BY 144 (CONVERTING FT<sup>2</sup> TO IN<sup>2</sup>). 50% OF TOTAL NET FREE VENTED AREA IS REQUIRED NEAR THE RIDGE (HIGH) AND 50% IS REQUIRED AT THE SOFFIT (LOW). WHEN BOTH (HIGH) & (LOW) ARE NOT PROVIDED, THE REQ'D NET FREE AREA IS 1/150 OF THE ACTUAL AREA INSTEAD.

\*\* ACTUAL NET FREE VENTED SOFFIT AREA IS CALCULATED BY DIVIDING THE REQUIRED (LOW) AREA BY THE MFRS STATED ACTUAL VENTED NET FREE AREA PER VENT:  
 LOW OPT 1: EAVE VENTS = 28.0 IN<sup>2</sup>/VENT (OR)  
 LOW OPT 2: CONT. VENTED SOFFITS = 10.0 IN<sup>2</sup>/LINEAR FT

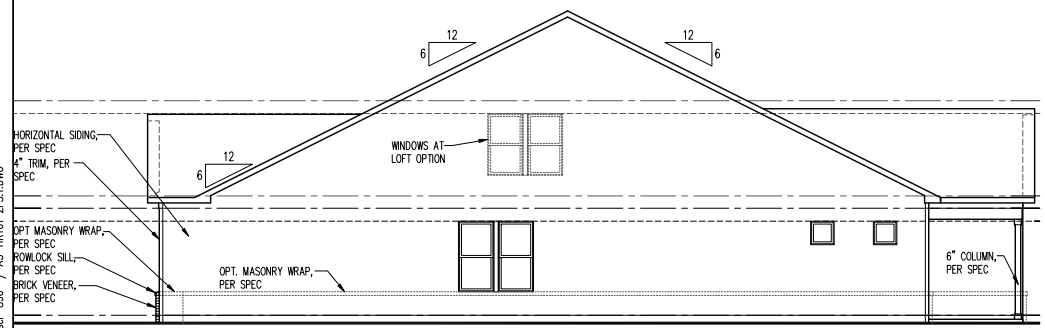
\*\*\* ACTUAL NET FREE VENTED RIDGE AREA IS CALCULATED BY DIVIDING THE REQUIRED (HIGH) AREA BY THE MFRS STATED ACTUAL VENTED NET AREA PER VENT:  
 HIGH OPT 1: POT ROOF VENTS = 61.0 IN<sup>2</sup>/VENT (OR)  
 HIGH OPT 2: CONT. RIDGE VENTS = 18.0 IN<sup>2</sup>/LINEAR FT



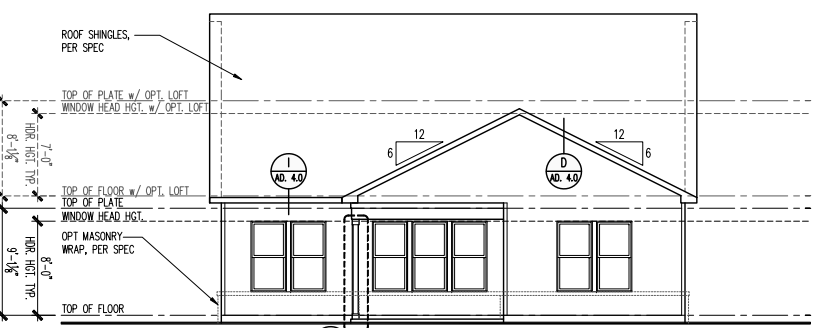
**ROOF PLAN**  
 SCALE: 1/8" = 1'-0"



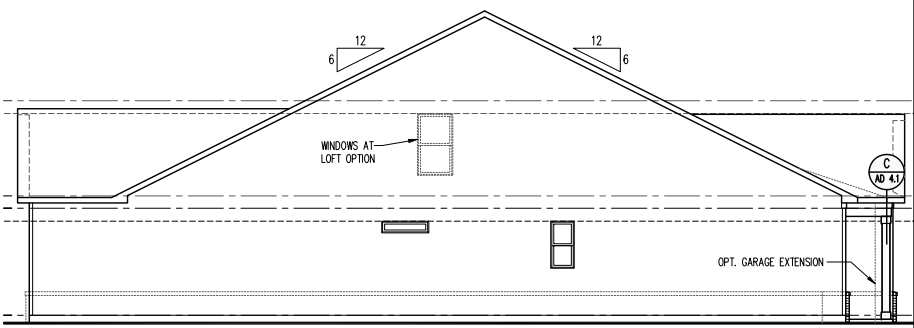
**FRONT ELEVATION**  
 SCALE: 1/4" = 1'-0"



**RIGHT ELEVATION**  
 SCALE: 1/8" = 1'-0"



**REAR ELEVATION**  
 SCALE: 1/8" = 1'-0"



**LEFT ELEVATION**  
 SCALE: 1/8" = 1'-0"







REV #	DATE / DESCRIPTION
1	04/30/2021 PCR REVISIONS
2	
3	
4	
5	
6	
7	
8	
9	
10	

GARAGE HANDING  
**GARAGE LEFT**

PLAN NAME  
**PRESTIGE**  
 NRC PLAN NUMBER  
**2697.300**  
 LAWSON PLAN ID

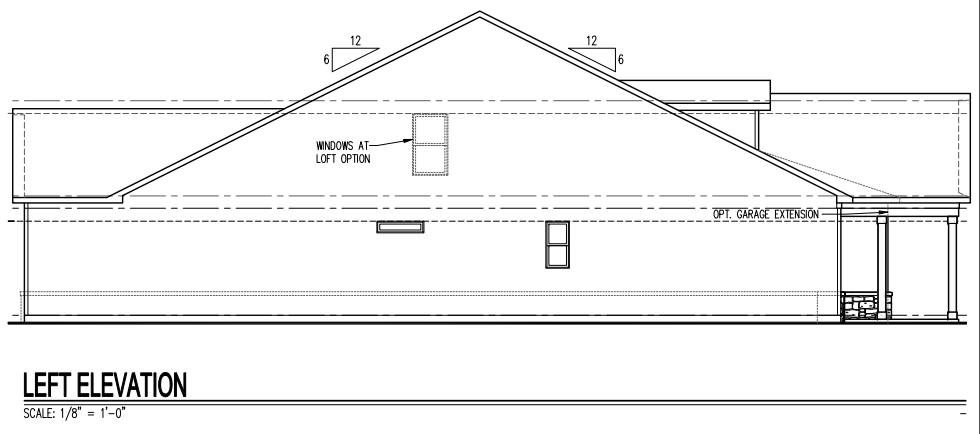
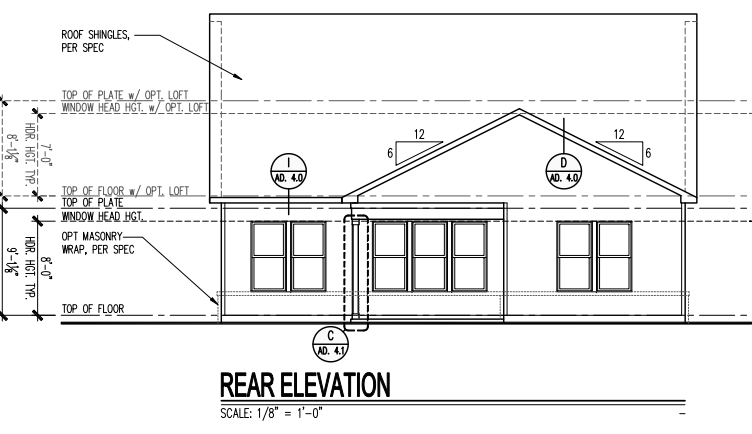
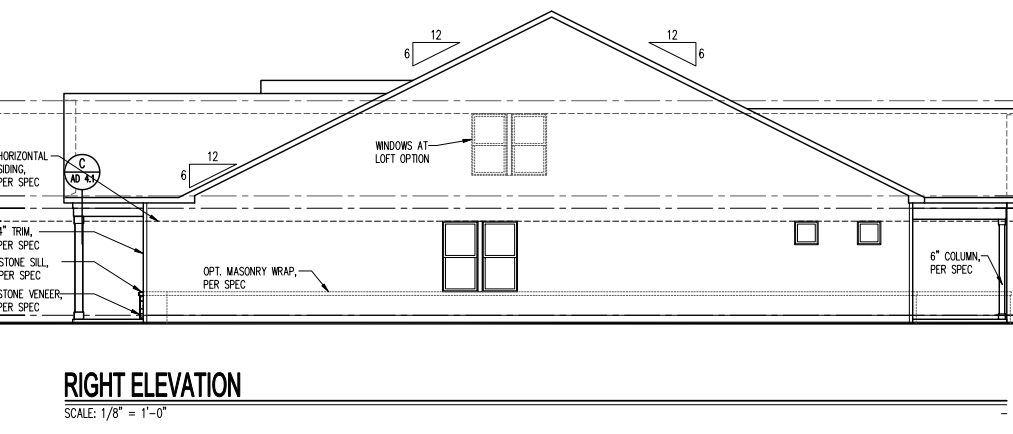
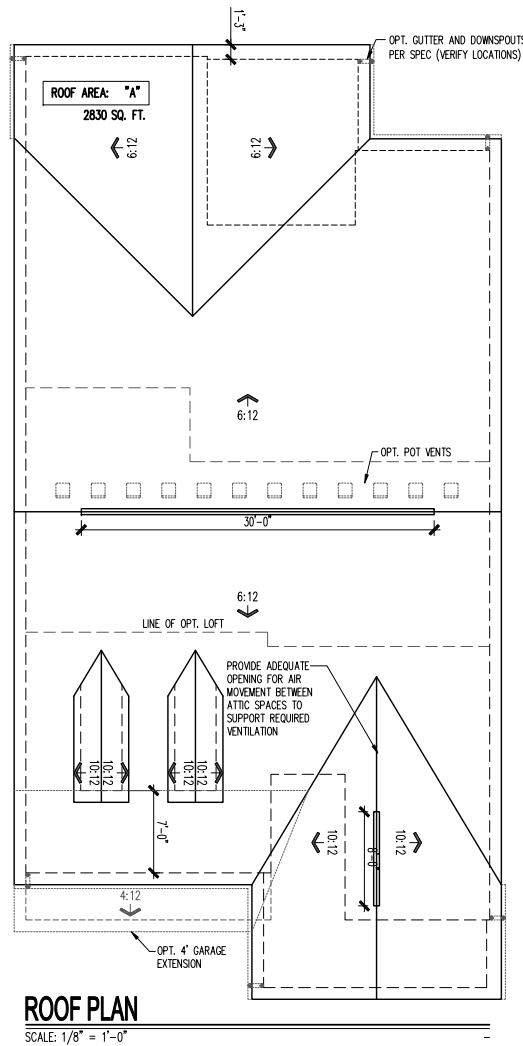
SHEET  
**A3-HR202**  
**2FS.1**

ATTIC VENT SCHEDULE			
HR202 3-CAR FRONT ENTRY	ROOF AREA 'A'	ROOF AREA 'B'	ROOF AREA 'C'
<b>ATTIC AREA (SF)</b>	2830		
<b>TOTAL NET FREE VENTED AREA REQ.</b>	1358 IN <sup>2</sup>		
<b>LOW - REQUIRED (*)</b>	679 IN <sup>2</sup>		
<b>LOW - ACTUAL w/ EAVE VENTS (**)</b>	700 IN <sup>2</sup> 25 EAVE VENTS		
<b>LOW - ACTUAL w/ CONTINUOUS VENTED SOFFITS (**)</b>	680 IN <sup>2</sup> 68 LINEAR FEET		
<b>HIGH - REQUIRED (*)</b>	679 IN <sup>2</sup>		
<b>HIGH - ACTUAL w/ POT VENTS (***)</b>	732 IN <sup>2</sup> 12 VENTS		
<b>HIGH - ACTUAL w/ CONT. RIDGE VENTS (***)</b>	684 IN <sup>2</sup> 38 LF		

\* REQUIRED NET FREE VENTED AREA IS CALCULATED BY MULTIPLYING THE ATTIC AREA (FT<sup>2</sup>) BY 1/300 AND THEN MULTIPLYING BY 144 (CONVERTING FT<sup>2</sup> TO IN<sup>2</sup>). 50% OF TOTAL NET FREE VENTED AREA IS REQUIRED NEAR THE RIDGE (HIGH) AND 50% IS REQUIRED AT THE SOFFIT (LOW). WHEN BOTH (HIGH) & (LOW) ARE NOT PROVIDED, THE REQ'D NET FREE AREA IS 1/150 OF THE ACTUAL AREA INSTEAD.

\*\* ACTUAL NET FREE VENTED SOFFIT AREA IS CALCULATED BY DIVIDING THE REQUIRED (LOW) AREA BY THE MFRS STATED ACTUAL VENTED NET FREE AREA PER VENT:  
 LOW OPT 1: EAVE VENTS = 28.0 IN<sup>2</sup>/VENT (OR)  
 LOW OPT 2: CONT. VENTED SOFFITS = 10.0 IN<sup>2</sup>/LINEAR FT

\*\*\* ACTUAL NET FREE VENTED RIDGE AREA IS CALCULATED BY DIVIDING THE REQUIRED (HIGH) AREA BY THE MFRS STATED ACTUAL VENTED NET AREA PER VENT:  
 HIGH OPT 1: POT ROOF VENTS = 61.0 IN<sup>2</sup>/VENT (OR)  
 HIGH OPT 2: CONT. RIDGE VENTS = 18.0 IN<sup>2</sup>/LINEAR FT



PLOTTED: April 27, 2021 / User: 886 / A3-HR202 2FS.1.DWG

NOTE: SCALES NOTED ON DRAWINGS RELATE TO FULL SIZE PLOTS ON 22x34 SHEETS - 11x17 SHEETS REPRESENT 1/2 SCALE PLOTS







REV #	DATE / DESCRIPTION
1	04/30/2021 PCR REVISIONS
2	
3	
4	
5	
6	
7	
8	
9	
10	

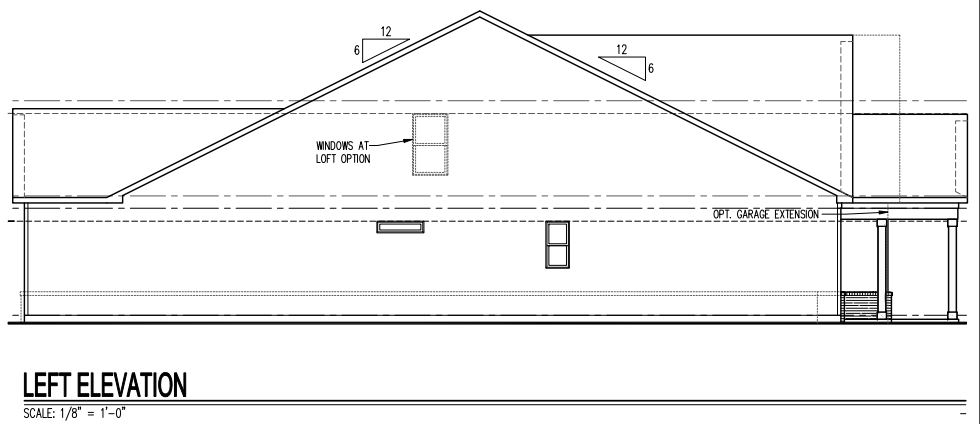
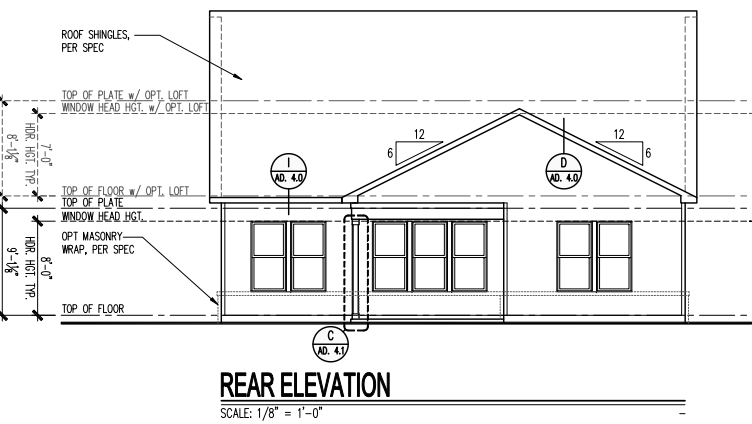
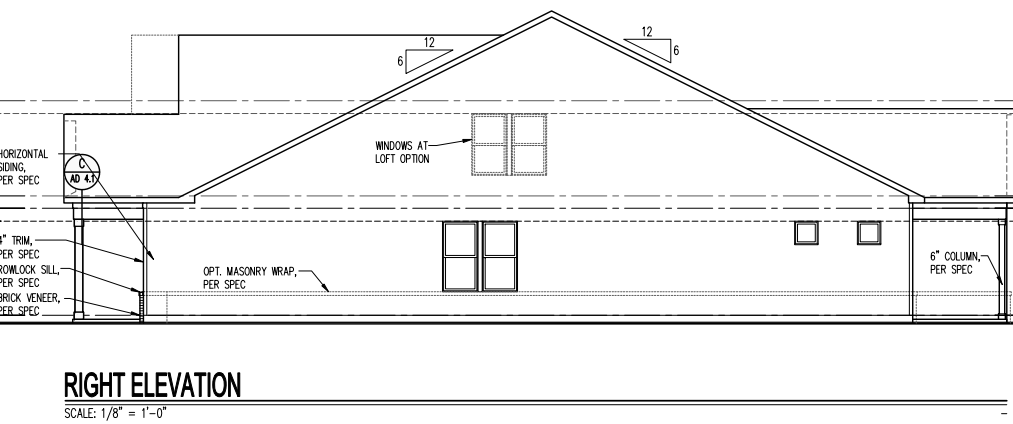
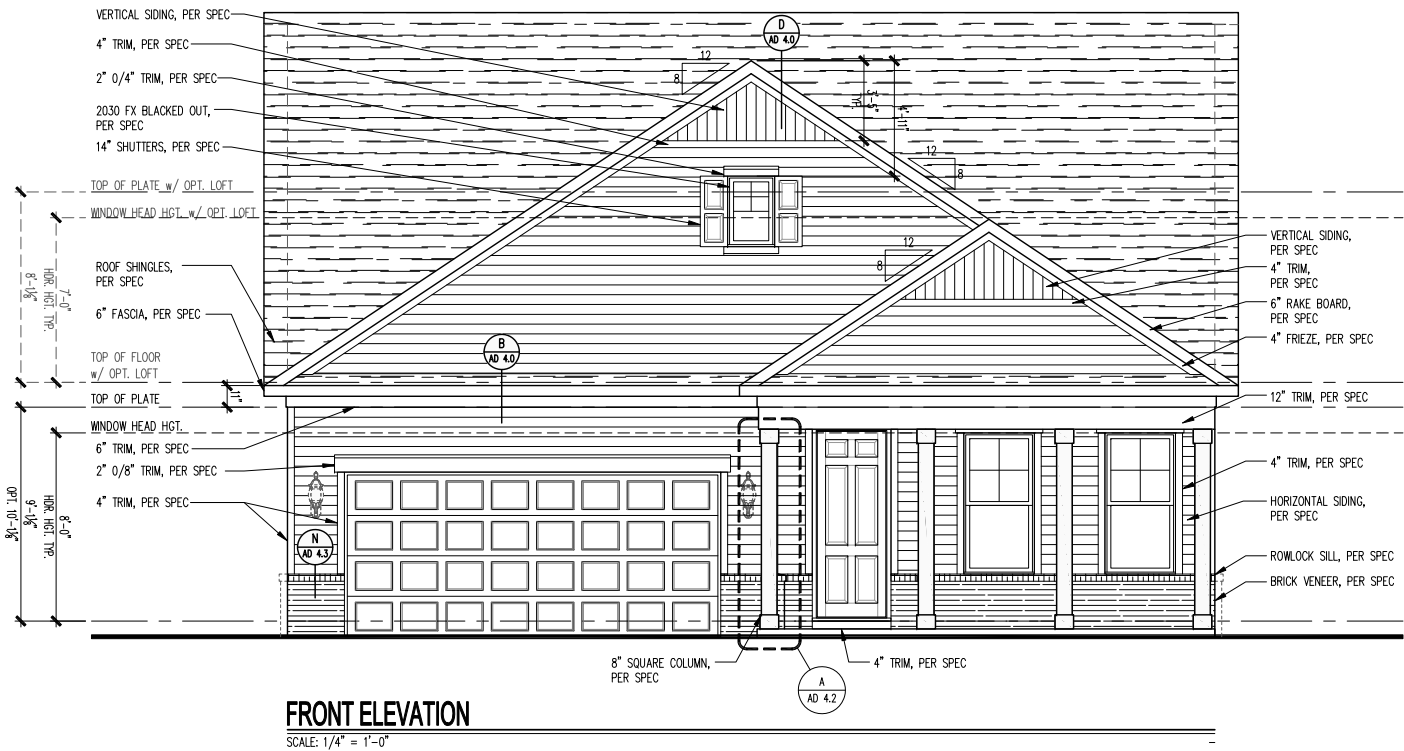
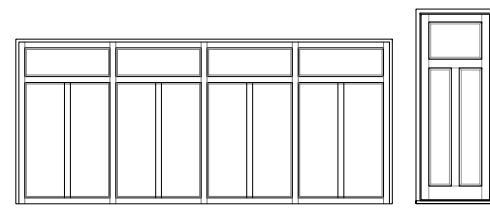
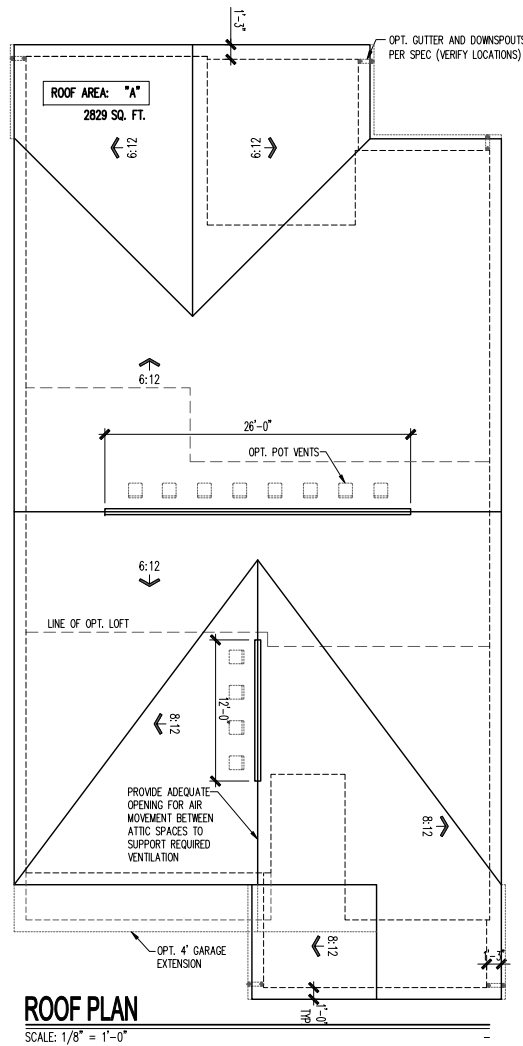
GARAGE HANDING  
**GARAGE LEFT**

PLAN NAME  
**PRESTIGE**  
 NRC PLAN NUMBER  
**2697.300**  
 LAWSON PLAN ID

SHEET  
**A3-LC201**  
**2FS.1**

ATTIC VENT SCHEDULE			
LC201 2-CAR FRONT ENTRY	ROOF AREA 'A'	ROOF AREA 'B'	ROOF AREA 'C'
<b>ATTIC AREA (SF)</b>	2829		
<b>TOTAL NET FREE VENTED AREA REQ.</b>	1358 in <sup>2</sup>		
<b>LOW - REQUIRED (*)</b>	679 in <sup>2</sup>		
<b>LOW - ACTUAL w/ EAVE VENTS (**)</b>	700 in <sup>2</sup> 25 EAVE VENTS		
<b>LOW - ACTUAL w/ CONTINUOUS VENTED SOFFITS (**)</b>	680 in <sup>2</sup> 68 LINEAR FEET		
<b>HIGH - REQUIRED (*)</b>	679 in <sup>2</sup>		
<b>HIGH - ACTUAL w/ CONT. RIDGE VENTS (***)</b>	732 in <sup>2</sup> 12 VENTS		
<b>HIGH - ACTUAL w/ CONT. RIDGE VENTS (***)</b>	684 in <sup>2</sup> 38 LF		

\* REQUIRED NET FREE VENTED AREA IS CALCULATED BY MULTIPLYING THE ATTIC AREA (FT<sup>2</sup>) BY 1/300 AND THEN MULTIPLYING BY 144 (CONVERTING FT<sup>2</sup> TO IN<sup>2</sup>). 50% OF TOTAL NET FREE VENTED AREA IS REQUIRED NEAR THE RIDGE (HIGH) AND 50% IS REQUIRED AT THE SOFFIT (LOW). WHEN BOTH (HIGH) & (LOW) ARE PROVIDED, THE REQ'D NET FREE AREA IS 1/150 OF THE ACTUAL AREA INSTEAD.  
 \*\* ACTUAL NET FREE VENTED SOFFIT AREA IS CALCULATED BY DIVIDING THE REQUIRED (LOW) AREA BY THE MFRS STATED ACTUAL VENTED NET FREE AREA PER VENT:  
 LOW OPT 1: EAVE VENTS = 28.0 IN<sup>2</sup>/VENT (OR)  
 LOW OPT 2: CONT. VENTED SOFFITS = 10.0 IN<sup>2</sup>/LINEAR FT  
 \*\*\* ACTUAL NET FREE VENTED RIDGE AREA IS CALCULATED BY DIVIDING THE REQUIRED (HIGH) AREA BY THE MFRS STATED ACTUAL VENTED NET AREA PER VENT:  
 HIGH OPT 1: POT ROOF VENTS = 61.0 IN<sup>2</sup>/VENT (OR)  
 HIGH OPT 2: CONT. RIDGE VENTS = 18.0 IN<sup>2</sup>/LINEAR FT



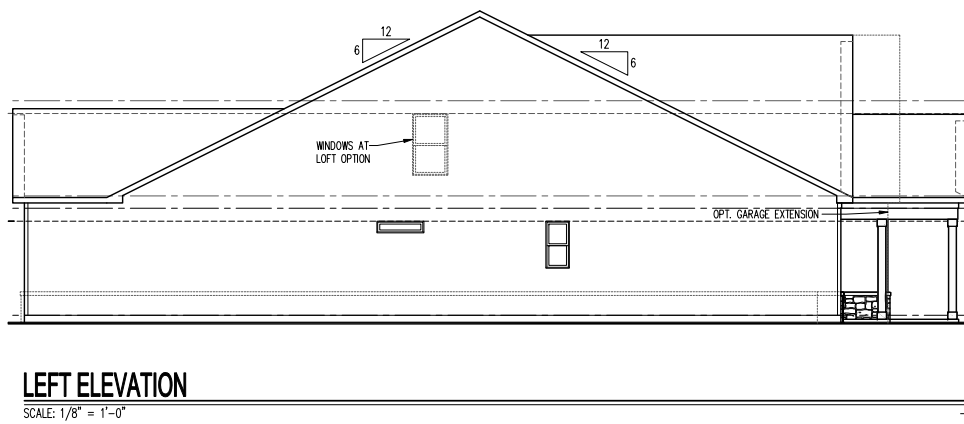
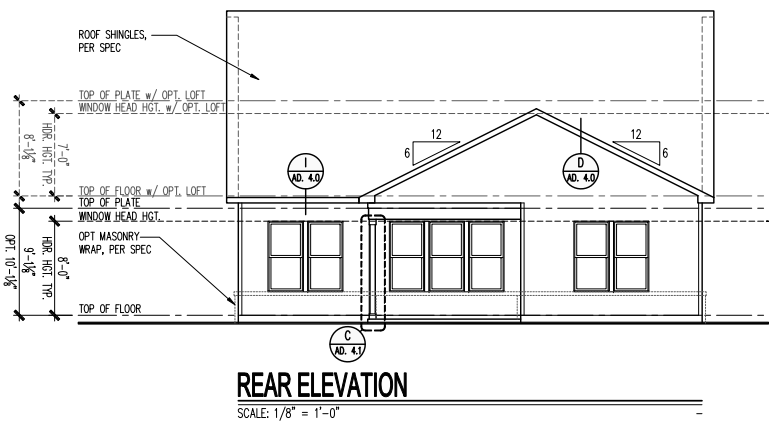
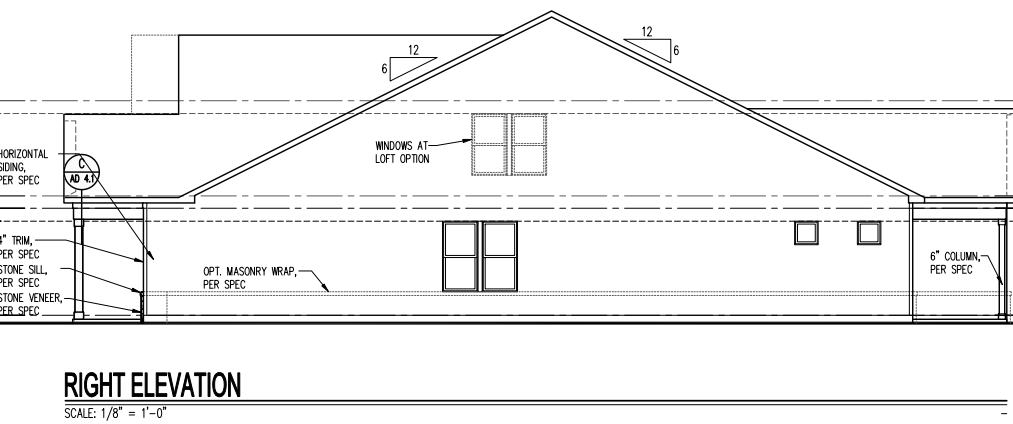
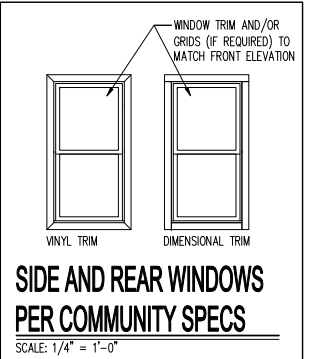
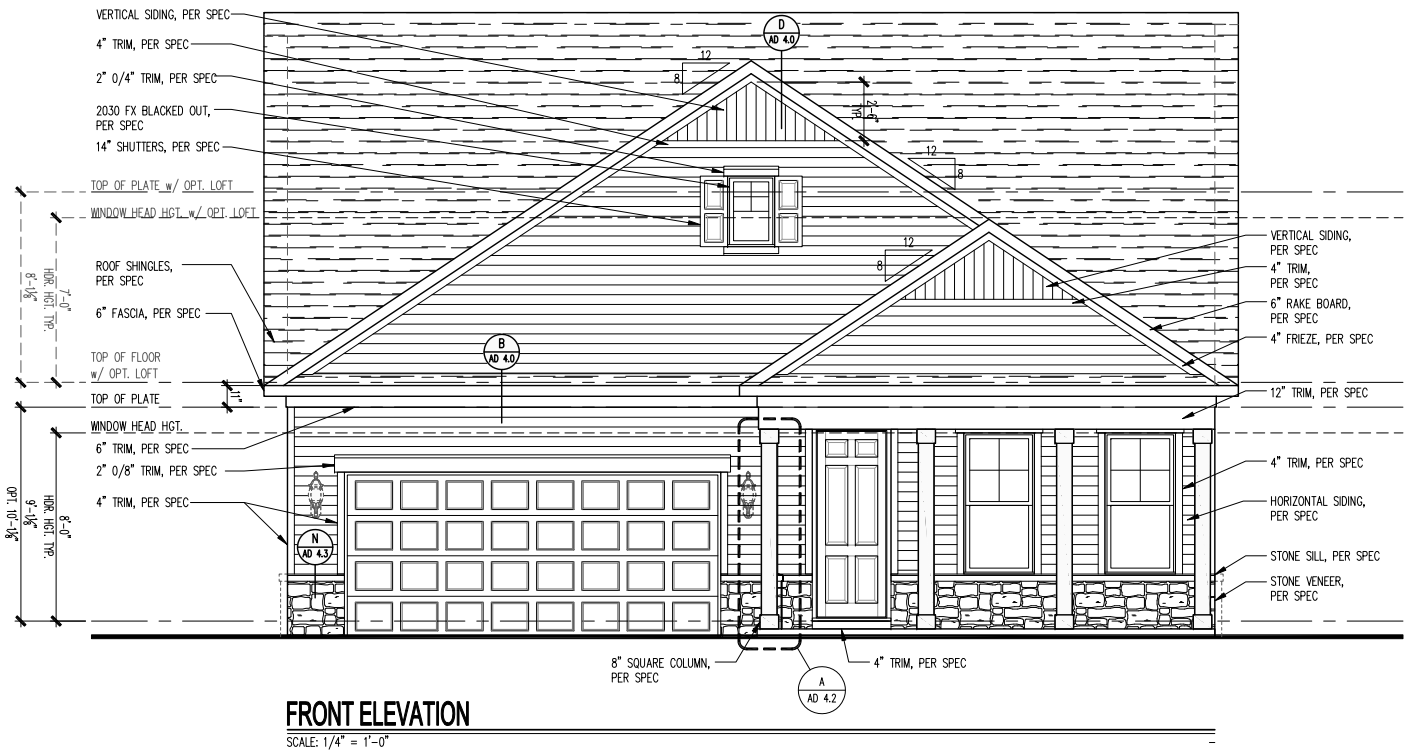
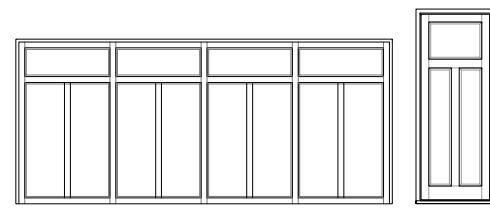
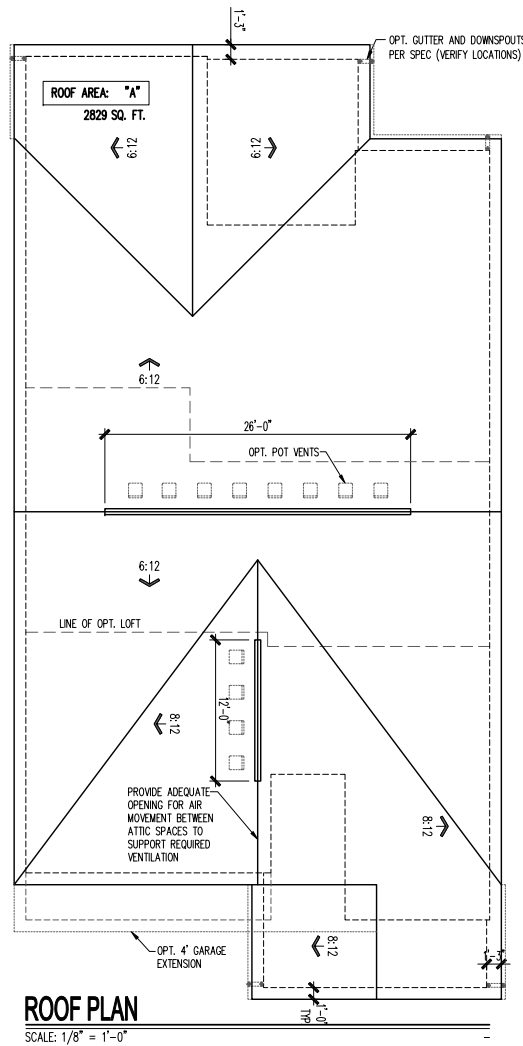


ATTIC VENT SCHEDULE			
LC202 2-CAR FRONT ENTRY	ROOF AREA 'A'	ROOF AREA 'B'	ROOF AREA 'C'
ATTIC AREA (SF)	2829		
TOTAL NET FREE VENTED AREA REQ.	1358 in <sup>2</sup>		
LOW - REQUIRED (*)	679 in <sup>2</sup>		
LOW - ACTUAL w/ EAVE VENTS (**)	700 in <sup>2</sup> 25 EAVE VENTS		
LOW - ACTUAL w/ CONTINUOUS VENTED SOFFITS (**)	680 in <sup>2</sup> 68 LINEAR FEET		
HIGH - REQUIRED (*)	679 in <sup>2</sup>		
HIGH - ACTUAL w/ POT VENTS (***)	732 in <sup>2</sup> 12 VENTS		
HIGH - ACTUAL w/ CONT. RIDGE VENTS (***)	684 in <sup>2</sup> 38 LF		

\* REQUIRED NET FREE VENTED AREA IS CALCULATED BY MULTIPLYING THE ATTIC AREA (FT<sup>2</sup>) BY 1/300 AND THEN MULTIPLYING BY 144 (CONVERTING FT<sup>2</sup> TO IN<sup>2</sup>). 50% OF TOTAL NET FREE VENTED AREA IS REQUIRED NEAR THE RIDGE (HIGH) AND 50% IS REQUIRED AT THE SOFFIT (LOW). WHEN BOTH (HIGH) & (LOW) ARE PROVIDED, THE REQ'D NET FREE AREA IS 1/150 OF THE ACTUAL AREA INSTEAD.

\*\* ACTUAL NET FREE VENTED SOFFIT AREA IS CALCULATED BY DIVIDING THE REQUIRED (LOW) AREA BY THE MFRS STATED ACTUAL VENTED NET FREE AREA PER VENT:  
 LOW OPT 1: EAVE VENTS = 28.0 IN<sup>2</sup>/VENT (OR)  
 LOW OPT 2: CONT. VENTED SOFFITS = 10.0 IN<sup>2</sup>/LINEAR FT

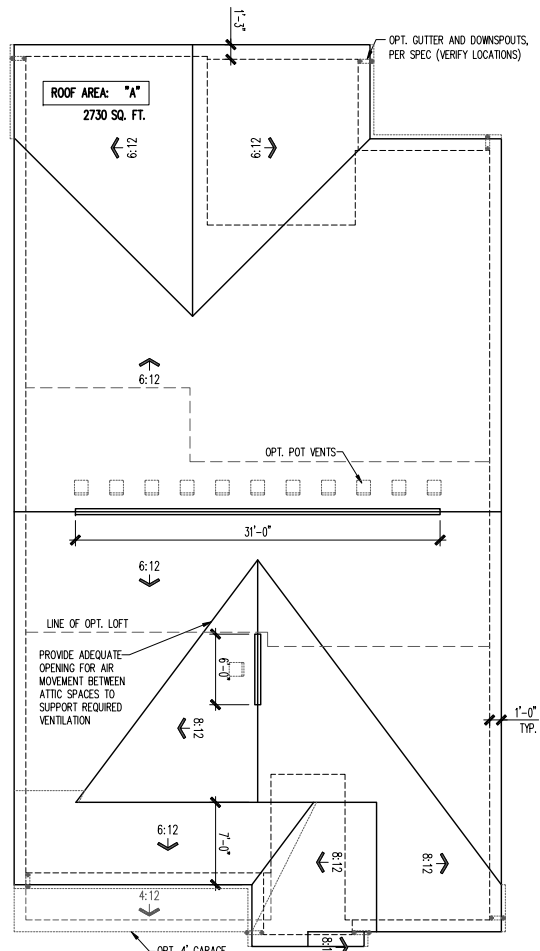
\*\*\* ACTUAL NET FREE VENTED RIDGE AREA IS CALCULATED BY DIVIDING THE REQUIRED (HIGH) AREA BY THE MFRS STATED ACTUAL VENTED NET AREA PER VENT:  
 HIGH OPT 1: POT ROOF VENTS = 61.0 IN<sup>2</sup>/VENT (OR)  
 HIGH OPT 2: CONT. RIDGE VENTS = 18.0 IN<sup>2</sup>/LINEAR FT



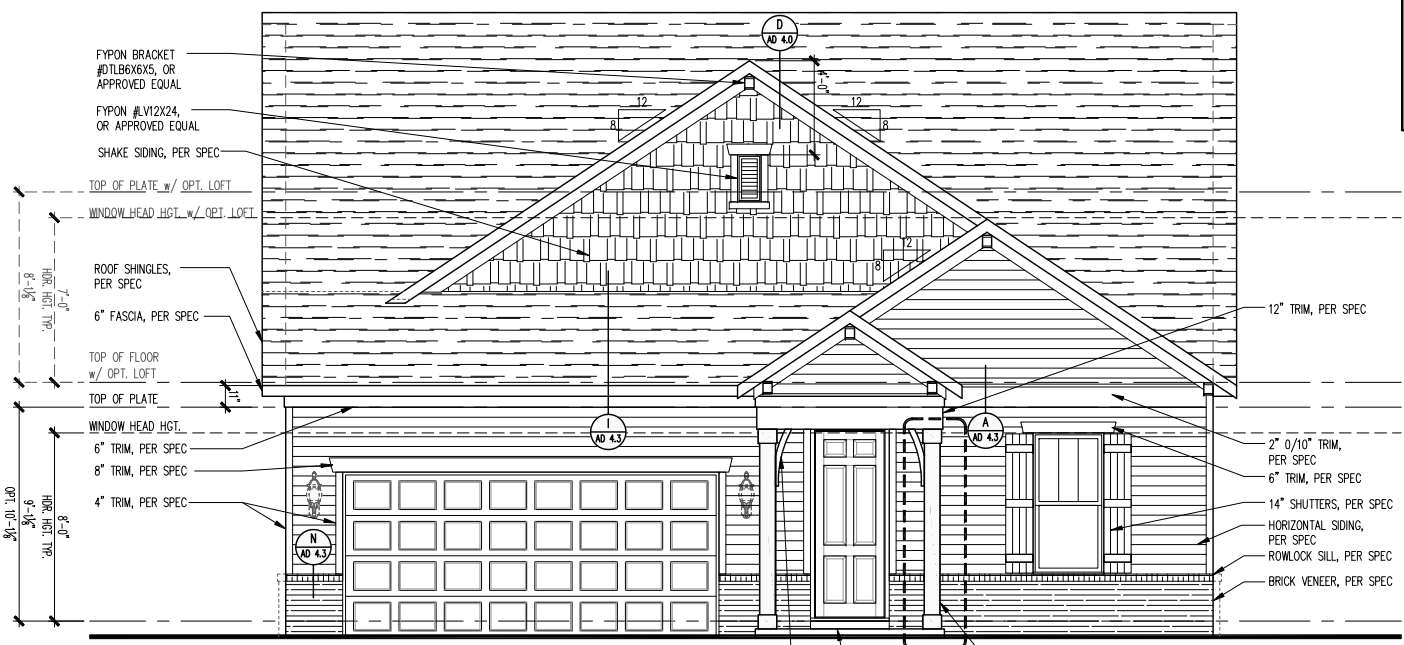
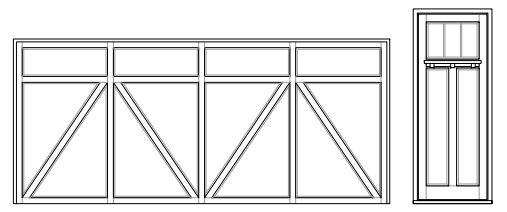


ATTIC VENT SCHEDULE			
NC101 2-CAR FRONT ENTRY	ROOF AREA 'A'	ROOF AREA 'B'	ROOF AREA 'C'
ATTIC AREA (SF)	2730		
TOTAL NET FREE VENTED AREA REQ.	1310 IN <sup>2</sup>		
LOW - REQUIRED (*)	655 IN <sup>2</sup>		
LOW - ACTUAL w/ EAVE VENTS (**)	672 IN <sup>2</sup> 24 EAVE VENTS		
LOW - ACTUAL w/ CONTINUOUS VENTED SOFFITS (**)	660 IN <sup>2</sup> 66 LINEAR FEET		
HIGH - REQUIRED (*)	655 IN <sup>2</sup>		
HIGH - ACTUAL w/ POT VENTS (***)	671 IN <sup>2</sup> 11 VENTS		
HIGH - ACTUAL w/ CONT. RIDGE VENTS (***)	666 IN <sup>2</sup> 37 LF		

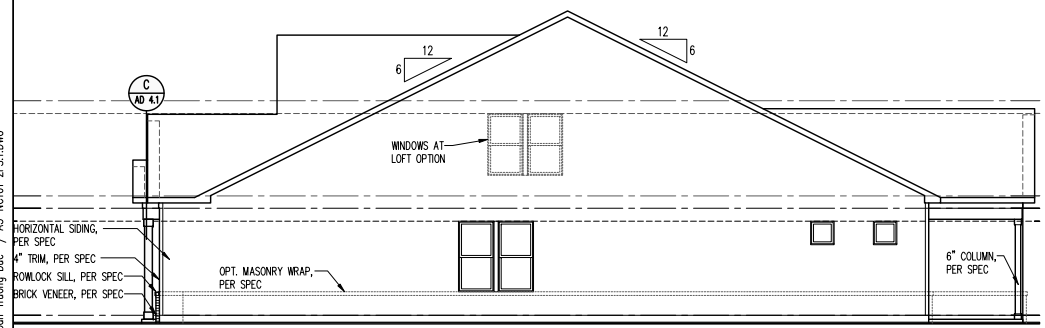
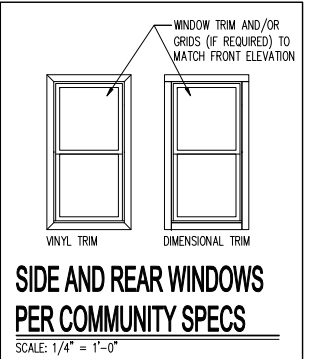
\* REQUIRED NET FREE VENTED AREA IS CALCULATED BY MULTIPLYING THE ATTIC AREA (FT<sup>2</sup>) BY 1/300 AND THEN MULTIPLYING BY 144 (CONVERTING FT<sup>2</sup> TO IN<sup>2</sup>). 50% OF TOTAL NET FREE VENTED AREA IS REQUIRED NEAR THE RIDGE (HIGH) AND 50% IS REQUIRED AT THE SOFFIT (LOW). WHEN BOTH (HIGH) & (LOW) ARE PROVIDED, THE REQ'D NET FREE AREA IS 1/150 OF THE ACTUAL AREA INSTEAD.  
 \*\* ACTUAL NET FREE VENTED SOFFIT AREA IS CALCULATED BY DIVIDING THE REQUIRED (LOW) AREA BY THE MFRS STATED ACTUAL VENTED NET FREE AREA PER VENT:  
 LOW OPT 1: EAVE VENTS = 28.0 IN<sup>2</sup>/VENT (OR)  
 LOW OPT 2: CONT. VENTED SOFFITS = 10.0 IN<sup>2</sup>/LINEAR FT  
 \*\*\* ACTUAL NET FREE VENTED RIDGE AREA IS CALCULATED BY DIVIDING THE REQUIRED (HIGH) AREA BY THE MFRS STATED ACTUAL VENTED NET AREA PER VENT:  
 HIGH OPT 1: POT ROOF VENTS = 61.0 IN<sup>2</sup>/VENT (OR)  
 HIGH OPT 2: CONT. RIDGE VENTS = 18.0 IN<sup>2</sup>/LINEAR FT



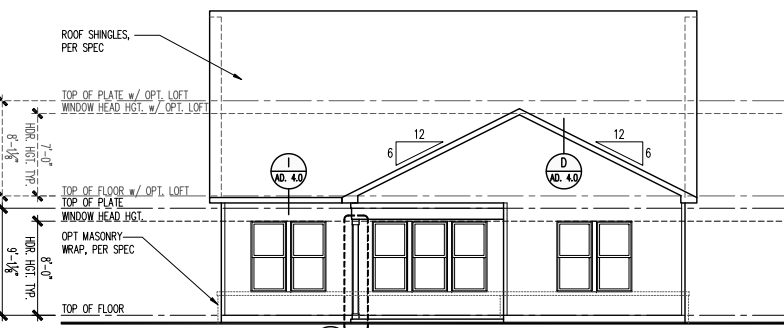
**ROOF PLAN**  
 SCALE: 1/8" = 1'-0"



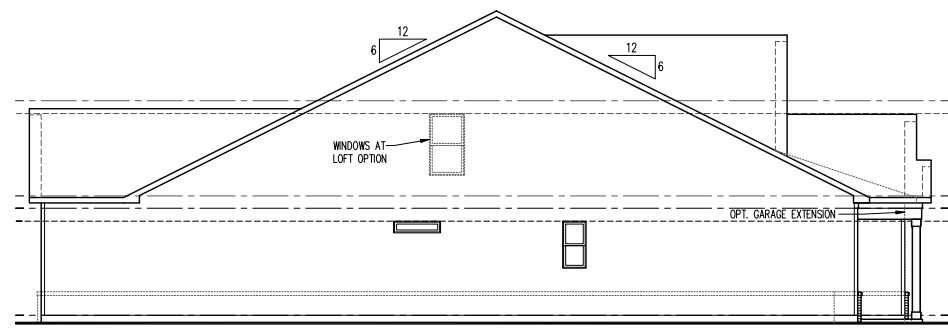
**FRONT ELEVATION**  
 SCALE: 1/4" = 1'-0"



**RIGHT ELEVATION**  
 SCALE: 1/8" = 1'-0"



**REAR ELEVATION**  
 SCALE: 1/8" = 1'-0"

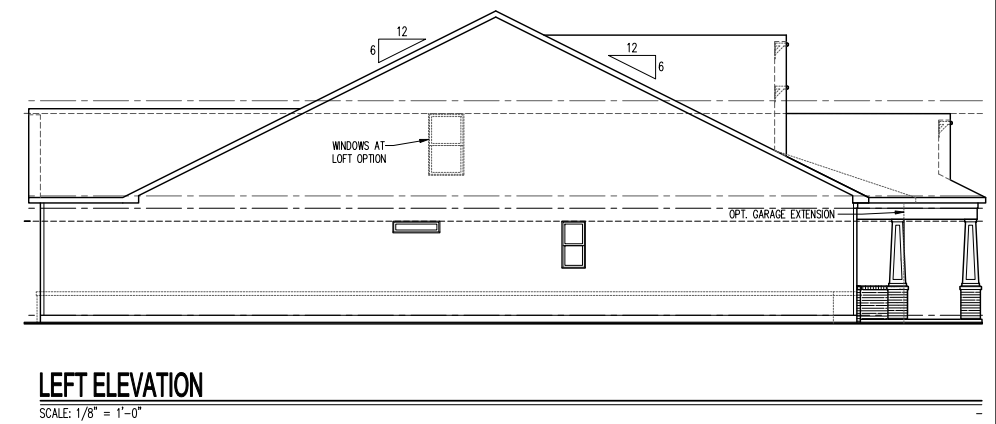
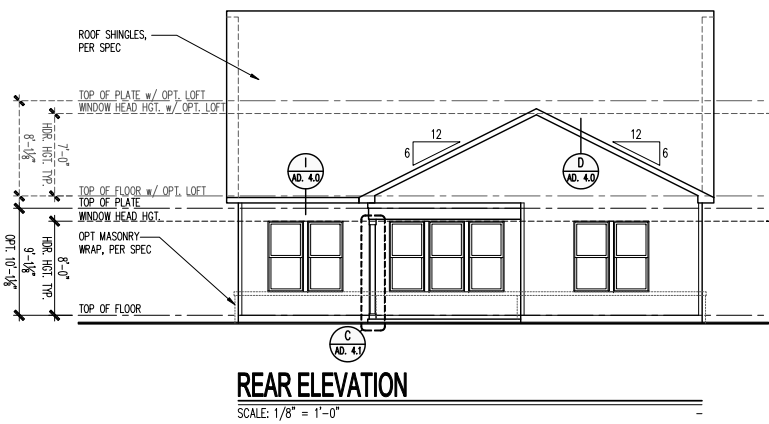
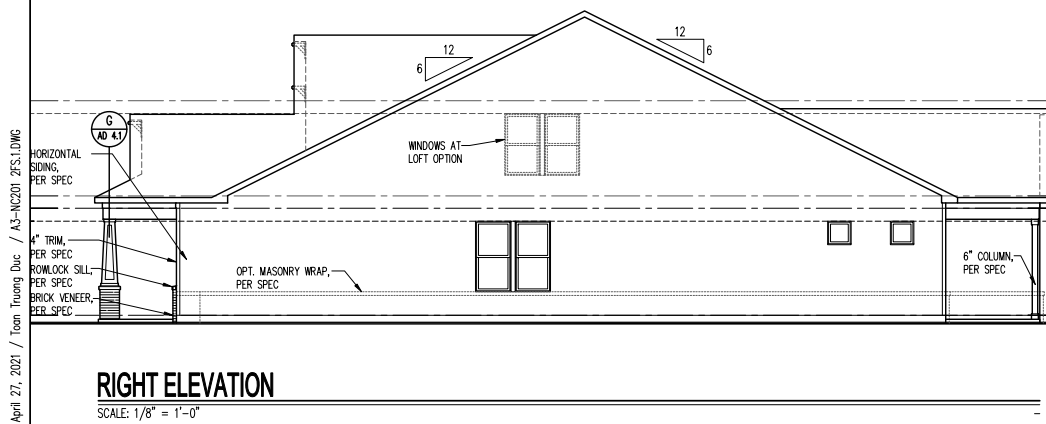
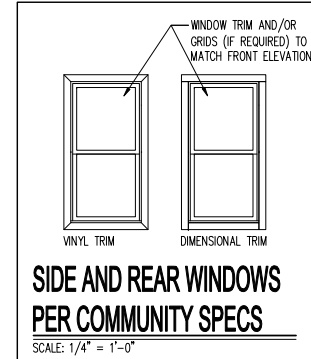
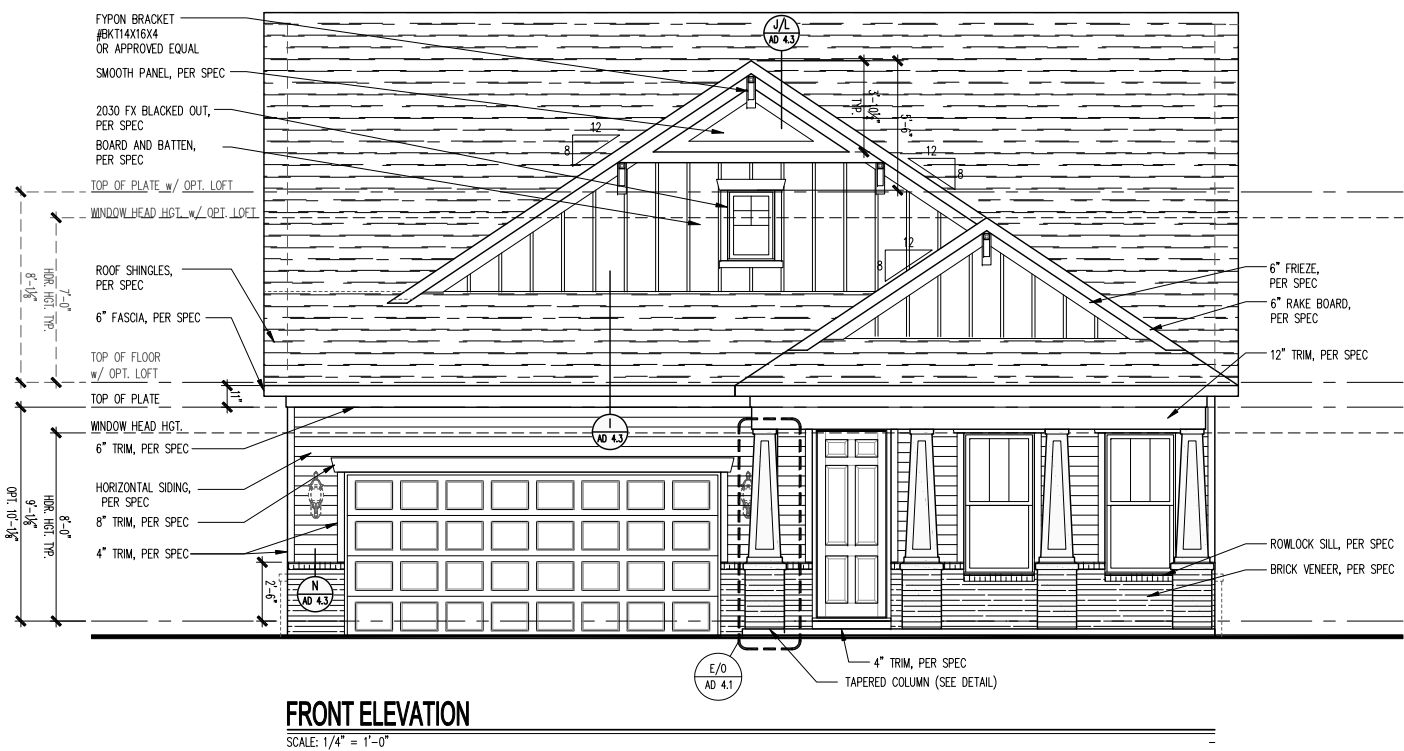
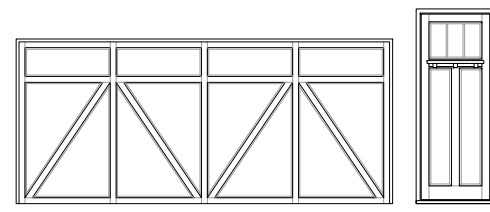
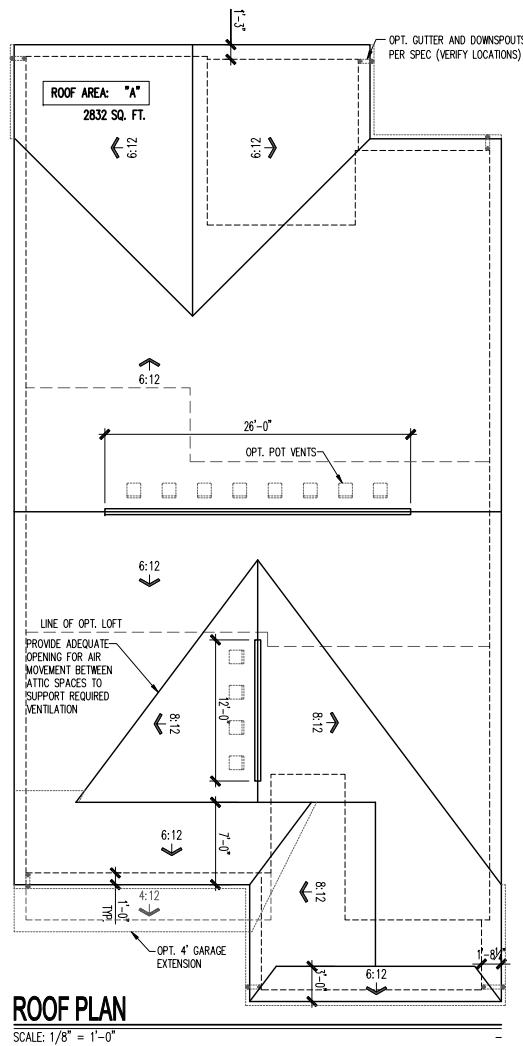


**LEFT ELEVATION**  
 SCALE: 1/8" = 1'-0"



ATTIC VENT SCHEDULE			
NC201 2-CAR FRONT ENTRY	ROOF AREA 'A'	ROOF AREA 'B'	ROOF AREA 'C'
ATTIC AREA (SF)	2832		
TOTAL NET FREE VENTED AREA REQ.	1359 IN <sup>2</sup>		
LOW - REQUIRED (*)	680 IN <sup>2</sup>		
LOW - ACTUAL w/ EAVE VENTS (**)	700 IN <sup>2</sup> 25 EAVE VENTS		
LOW - ACTUAL w/ CONTINUOUS VENTED SOFFITS (**)	680 IN <sup>2</sup> 68 LINEAR FEET		
HIGH - REQUIRED (*)	680 IN <sup>2</sup>		
HIGH - ACTUAL w/ POT VENTS (***)	732 IN <sup>2</sup> 12 VENTS		
HIGH - ACTUAL w/ CONT. RIDGE VENTS (***)	684 IN <sup>2</sup> 38 LF		

\* REQUIRED NET FREE VENTED AREA IS CALCULATED BY MULTIPLYING THE ATTIC AREA (FT<sup>2</sup>) BY 1/300 AND THEN MULTIPLYING BY 144 (CONVERTING FT<sup>2</sup> TO IN<sup>2</sup>). 50% OF TOTAL NET FREE VENTED AREA IS REQUIRED NEAR THE RIDGE (HIGH) AND 50% IS REQUIRED AT THE SOFFIT (LOW). WHEN BOTH (HIGH) & (LOW) ARE PROVIDED, THE REQ'D NET FREE AREA IS 1/150 OF THE ACTUAL AREA INSTEAD.  
 \*\* ACTUAL NET FREE VENTED SOFFIT AREA IS CALCULATED BY DIVIDING THE REQUIRED (LOW) AREA BY THE MFRS STATED ACTUAL VENTED NET FREE AREA PER VENT:  
 LOW OPT 1: EAVE VENTS = 28.0 IN<sup>2</sup>/VENT (OR)  
 LOW OPT 2: CONT. VENTED SOFFITS = 10.0 IN<sup>2</sup>/LINEAR FT  
 \*\*\* ACTUAL NET FREE VENTED RIDGE AREA IS CALCULATED BY DIVIDING THE REQUIRED (HIGH) AREA BY THE MFRS STATED ACTUAL VENTED NET AREA PER VENT:  
 HIGH OPT 1: POT ROOF VENTS = 61.0 IN<sup>2</sup>/VENT (OR)  
 HIGH OPT 2: CONT. RIDGE VENTS = 18.0 IN<sup>2</sup>/LINEAR FT





REV #	DATE / DESCRIPTION
1	04/30/2021
2	PCR REVISIONS
3	
4	
5	
6	
7	
8	
9	
10	
11	
12	
13	
14	
15	
16	
17	
18	
19	
20	

GARAGE HANDING  
**GARAGE LEFT**

PLAN NAME  
**PRESTIGE**  
 NRC PLAN NUMBER  
**2697.300**  
 LAWSON PLAN ID

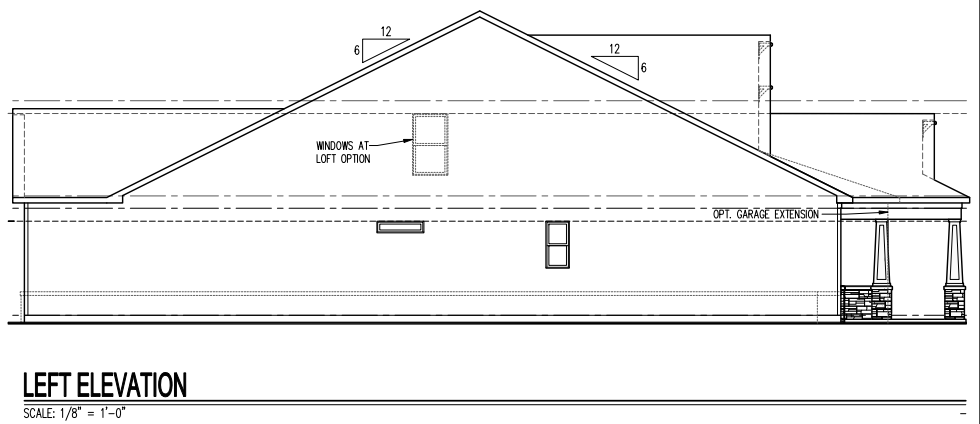
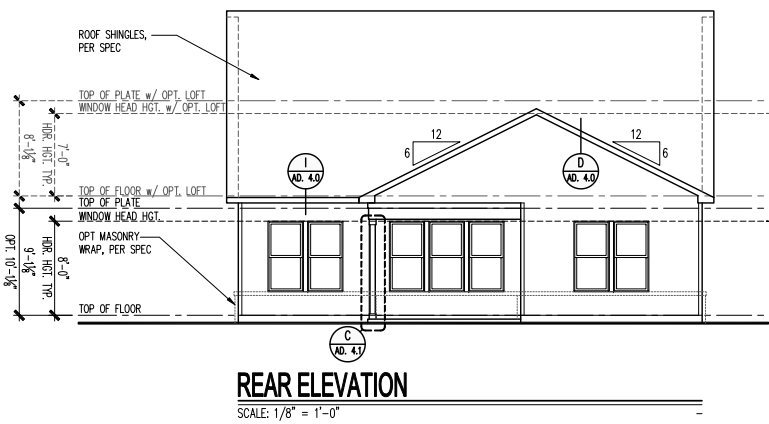
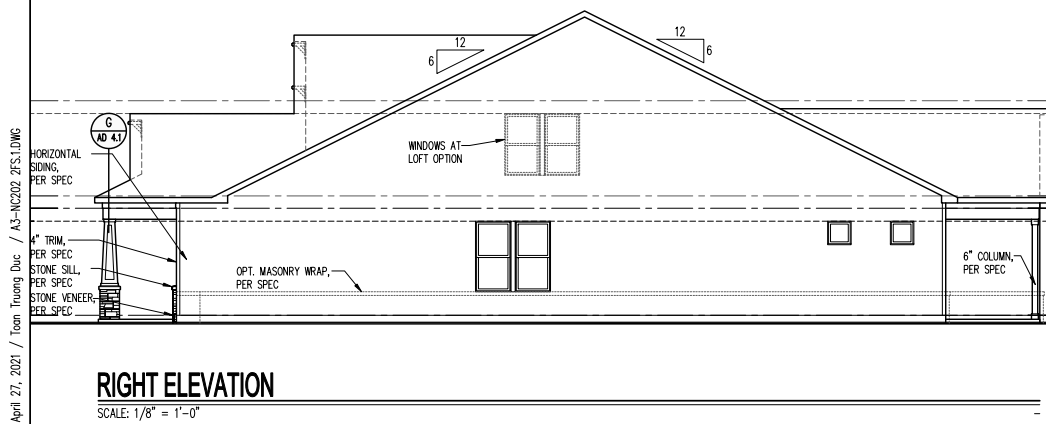
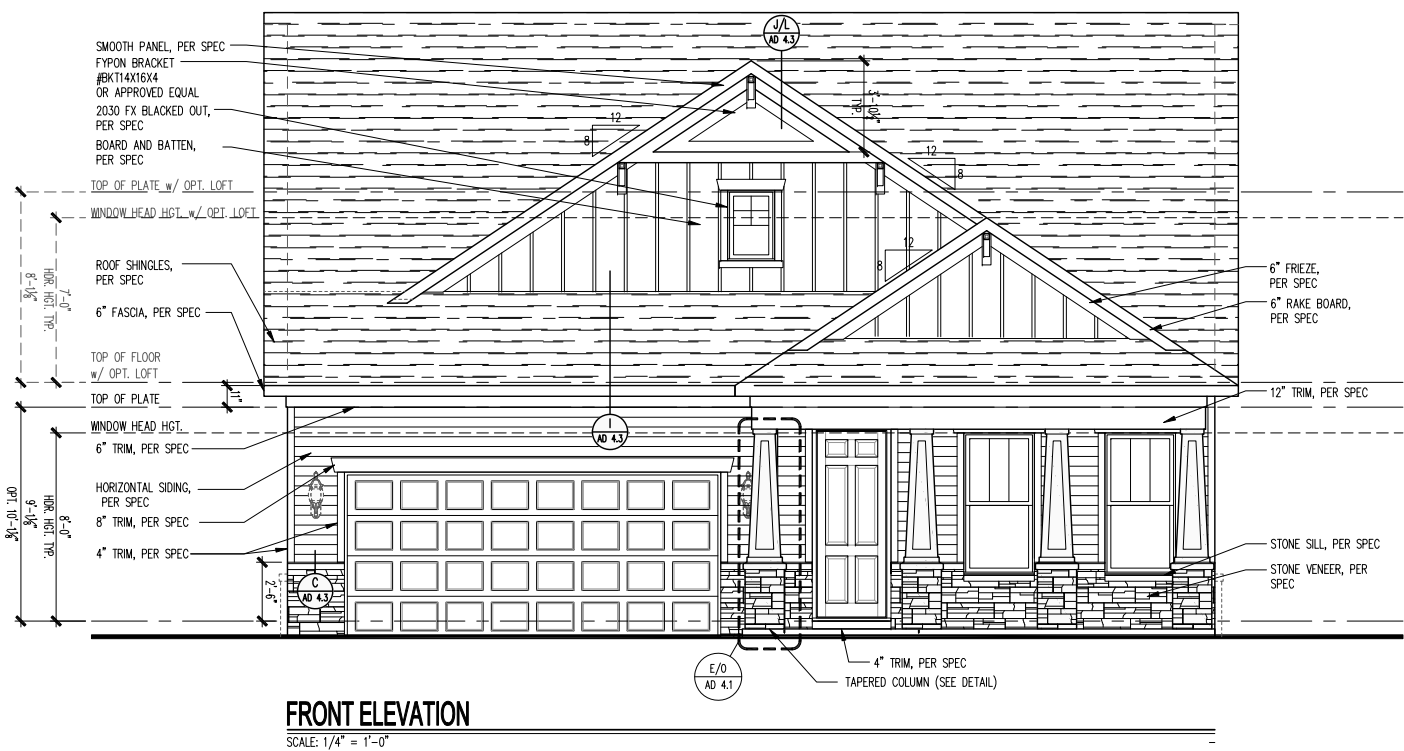
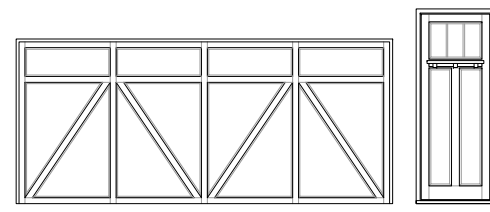
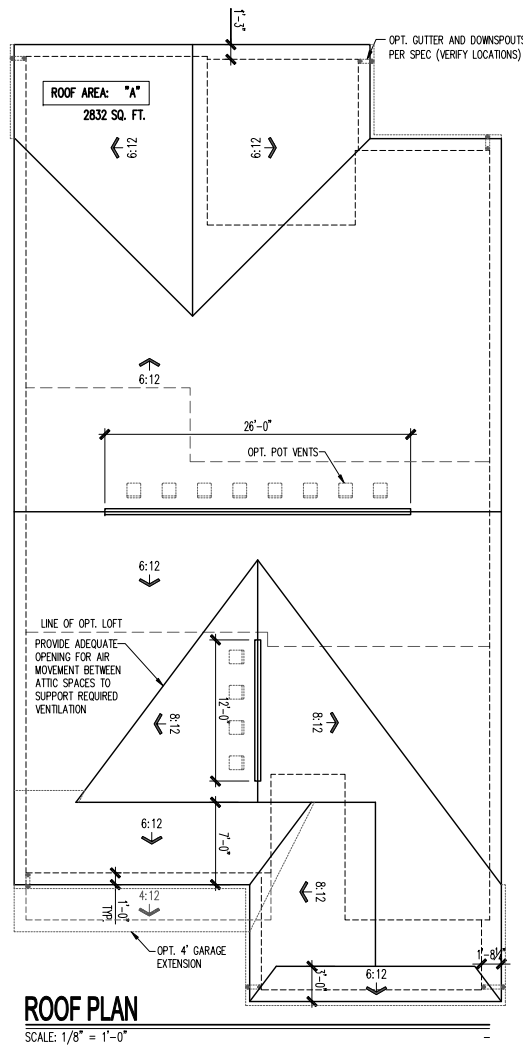
SHEET  
**A3-NC202**  
**2FS.1**

ATTIC VENT SCHEDULE			
NC202 2-CAR FRONT ENTRY	ROOF AREA 'A'	ROOF AREA 'B'	ROOF AREA 'C'
ATTIC AREA (SF)	2832		
TOTAL NET FREE VENTED AREA REQ.	1359 IN <sup>2</sup>		
LOW - REQUIRED (**)	680 IN <sup>2</sup>		
LOW - ACTUAL w/ EAVE VENTS (***)	700 IN <sup>2</sup> 25 EAVE VENTS		
LOW - ACTUAL w/ CONTINUOUS VENTED SOFFITS (***)	680 IN <sup>2</sup> 68 LINEAR FEET		
HIGH - REQUIRED (**)	680 IN <sup>2</sup>		
HIGH - ACTUAL w/ POT VENTS (***)	732 IN <sup>2</sup> 12 VENTS		
HIGH - ACTUAL w/ CONT. RIDGE VENTS (***)	684 IN <sup>2</sup> 38 LF		

\* REQUIRED NET FREE VENTED AREA IS CALCULATED BY MULTIPLYING THE ATTIC AREA (FT<sup>2</sup>) BY 1/300 AND THEN MULTIPLYING BY 144 (CONVERTING FT<sup>2</sup> TO IN<sup>2</sup>). 50% OF TOTAL NET FREE VENTED AREA IS REQUIRED NEAR THE RIDGE (HIGH) AND 50% IS REQUIRED AT THE SOFFIT (LOW). WHEN BOTH (HIGH) & (LOW) ARE PROVIDED, THE REQ'D NET FREE AREA IS 1/150 OF THE ACTUAL AREA INSTEAD.

\*\* ACTUAL NET FREE VENTED SOFFIT AREA IS CALCULATED BY DIVIDING THE REQUIRED (LOW) AREA BY THE MFRS STATED ACTUAL VENTED NET FREE AREA PER VENT:  
 LOW OPT 1: EAVE VENTS = 28.0 IN<sup>2</sup>/VENT (OR)  
 LOW OPT 2: CONT. VENTED SOFFITS = 10.0 IN<sup>2</sup>/LINEAR FT

\*\*\* ACTUAL NET FREE VENTED RIDGE AREA IS CALCULATED BY DIVIDING THE REQUIRED (HIGH) AREA BY THE MFRS STATED ACTUAL VENTED NET AREA PER VENT:  
 HIGH OPT 1: POT ROOF VENTS = 61.0 IN<sup>2</sup>/VENT (OR)  
 HIGH OPT 2: CONT. RIDGE VENTS = 18.0 IN<sup>2</sup>/LINEAR FT







PLOTTED: August 17, 2023 / A3-NC203 2FS.1.DWG / Tiffany Yost / A3-NC203 2FS.1.DWG  
 NOTE: SCALES NOTED ON DRAWINGS RELATE TO FULL SIZE PLOTS ON 22x34" SHEETS - 11x17 SHEETS REPRESENT 1/2 SCALE PLOTS

**North Area**  
 1900 E. Golf Road, - Suite 300  
 Schaumburg, Illinois 60173

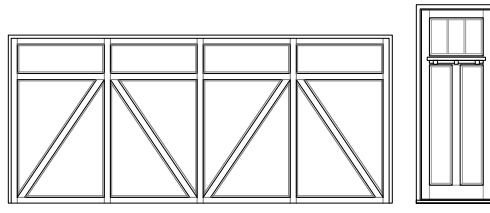
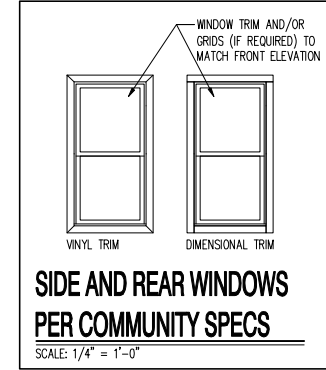


**NC203**  
**2 Car Front Entry**  
 Front, Side and Rear Elevations, Roof Plan and Ventilation Schedule

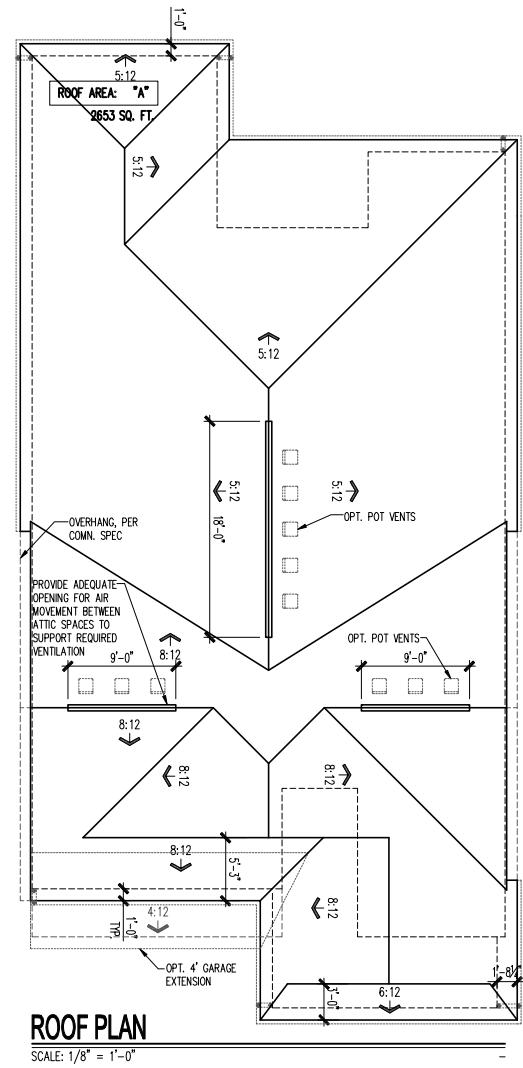
PRODUCTION MANAGER Rick Storkey	
INITIAL RELEASE DATE: 01/16/2023	
CURRENT RELEASE DATE: 01/16/2023	
REV #	DATE / DESCRIPTION
1	01/16/2023
2	PLAN REFRESH
3	06/30/2023
4	PCR UPDATES
5	
6	
7	
8	
9	
10	
11	
12	
13	
14	
15	
16	
17	
18	
19	
20	
21	
22	
23	
24	
25	
26	
27	
28	
29	
30	
31	
32	
33	
34	
35	
36	
37	
38	
39	
40	
41	
42	
43	
44	
45	
46	
47	
48	
49	
50	
51	
52	
53	
54	
55	
56	
57	
58	
59	
60	
61	
62	
63	
64	
65	
66	
67	
68	
69	
70	
71	
72	
73	
74	
75	
76	
77	
78	
79	
80	
81	
82	
83	
84	
85	
86	
87	
88	
89	
90	
91	
92	
93	
94	
95	
96	
97	
98	
99	
100	

ATTIC VENT SCHEDULE			
NC203 2-CAR FRONT ENTRY	ROOF AREA 'A'	ROOF AREA 'B'	ROOF AREA 'C'
ATTIC AREA (SF)	2653		
TOTAL NET FREE VENTED AREA REQ.	1273 IN <sup>2</sup>		
LOW - REQUIRED (*)	637 IN <sup>2</sup>		
LOW - ACTUAL w/ EAVE VENTS (**)	644 IN <sup>2</sup> 23 EAVE VENTS		
LOW - ACTUAL w/ CONTINUOUS VENTED SOFFITS (**)	640 IN <sup>2</sup> 64 LINEAR FEET		
HIGH - REQUIRED (*)	637 IN <sup>2</sup>		
HIGH - ACTUAL w/ POT VENTS (***)	671 IN <sup>2</sup> 11 VENTS		
HIGH - ACTUAL w/ CONT. RIDGE VENTS (***)	648 IN <sup>2</sup> 36 LF		

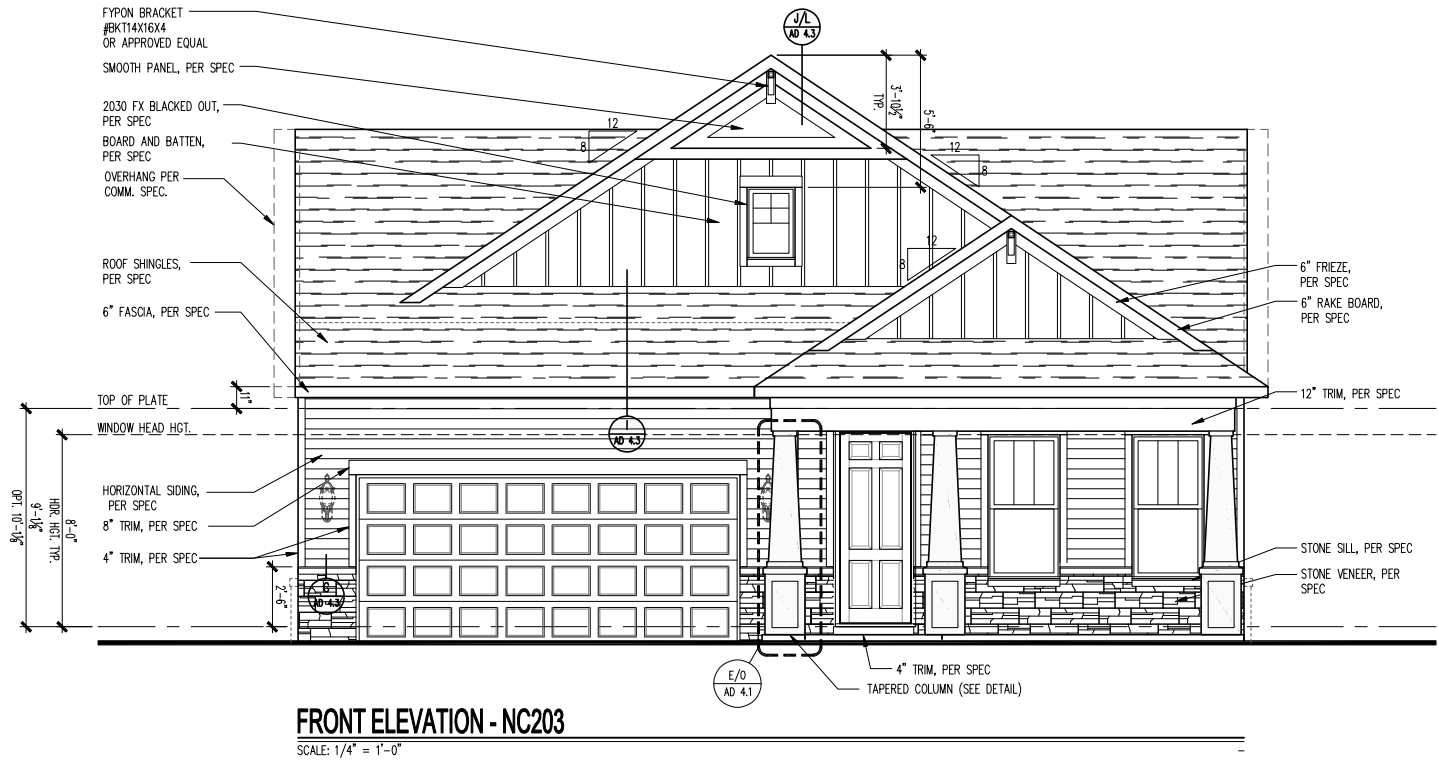
\* REQUIRED NET FREE VENTED AREA IS CALCULATED BY MULTIPLYING THE ATTIC AREA (FT<sup>2</sup>) BY 1/300 AND THEN MULTIPLYING BY 144 (CONVERTING FT<sup>2</sup> TO IN<sup>2</sup>). 50% OF TOTAL NET FREE VENTED AREA IS REQUIRED NEAR THE RIDGE (HIGH) AND 50% IS REQUIRED AT THE SOFFIT (LOW). WHEN BOTH (HIGH) & (LOW) ARE PROVIDED, THE REQ'D NET FREE AREA IS 1/150 OF THE ACTUAL AREA INSTEAD.  
 \*\* ACTUAL NET FREE VENTED SOFFIT AREA IS CALCULATED BY DIVIDING THE REQUIRED (LOW) AREA BY THE MFRS STATED ACTUAL VENTED NET FREE AREA PER VENT:  
 LOW OPT 1: EAVE VENTS = 28.0 IN<sup>2</sup>/VENT (OR)  
 LOW OPT 2: CONT. VENTED SOFFITS = 10.0 IN<sup>2</sup>/LINEAR FT  
 \*\*\* ACTUAL NET FREE VENTED RIDGE AREA IS CALCULATED BY DIVIDING THE REQUIRED (HIGH) AREA BY THE MFRS STATED ACTUAL VENTED NET AREA PER VENT:  
 HIGH OPT 1: POT ROOF VENTS = 61.0 IN<sup>2</sup>/VENT (OR)  
 HIGH OPT 2: CONT. RIDGE VENTS = 18.0 IN<sup>2</sup>/LINEAR FT



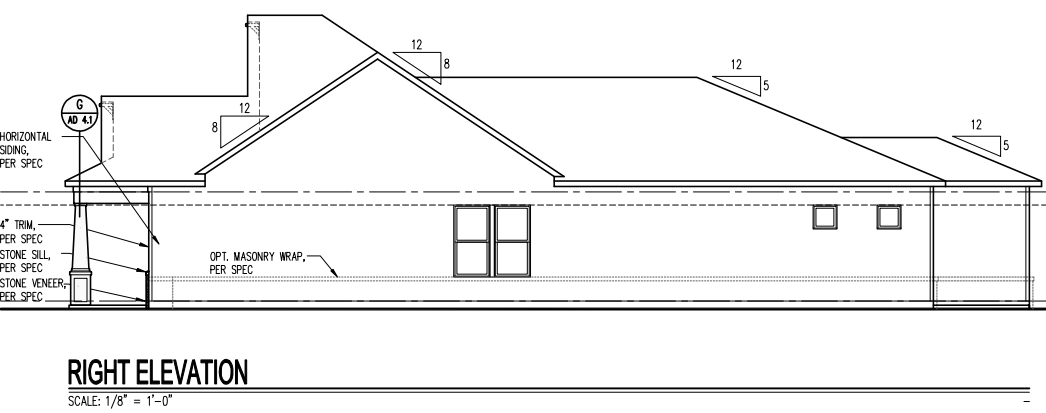
**UPGRADED DOOR OPTION**  
SCALE: 1/4" = 1'-0"



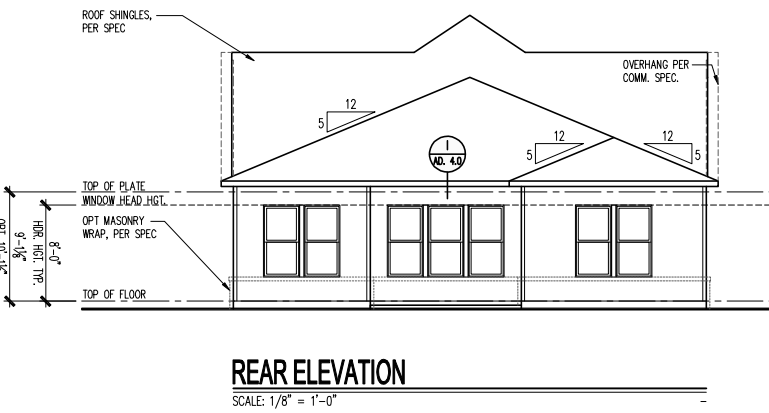
**ROOF PLAN**  
SCALE: 1/8" = 1'-0"



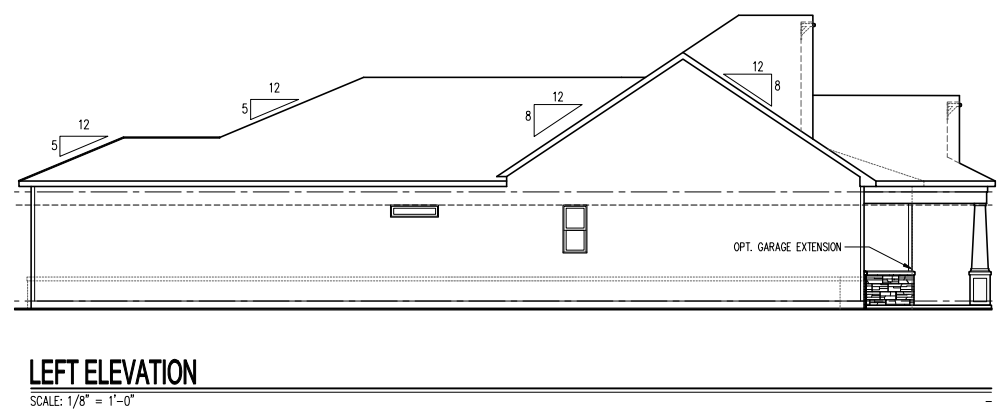
**FRONT ELEVATION - NC203**  
SCALE: 1/4" = 1'-0"



**RIGHT ELEVATION**  
SCALE: 1/8" = 1'-0"



**REAR ELEVATION**  
SCALE: 1/8" = 1'-0"



**LEFT ELEVATION**  
SCALE: 1/8" = 1'-0"