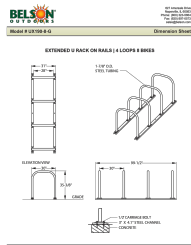


2560 E MAIN ST PLANFIELD, IN.

CIVIL ENGINEERING | LANDSCAPE ARCHITECTURE | LAND PLANNING | LAND SURVEYING | MUNICIPAL SERVICES

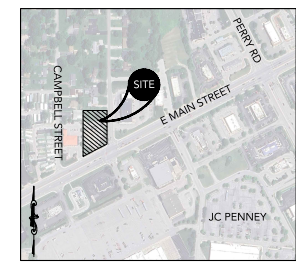
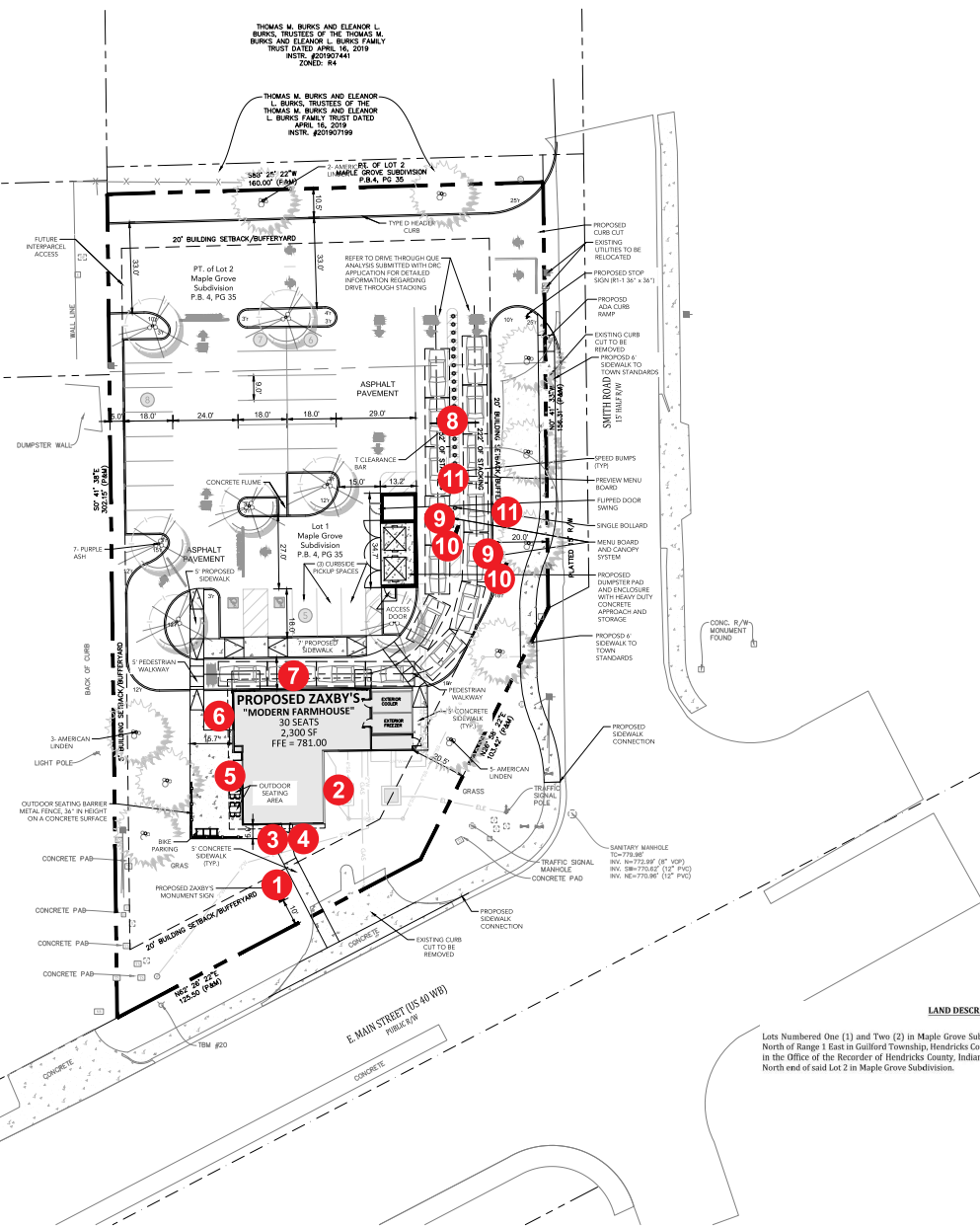


LOT 21
MAPLE GROVE SUB.
P.B. 4, PG. 35
ARO PROPERTIES, LLC
INSTR. #20200704
ZONED: R4

THOMAS M. BURKS AND ELEANOR L. BURKS, TRUSTEES OF THE THOMAS M. BURKS AND ELEANOR L. BURKS FAMILY TRUST DATED APRIL 16, 2019
INSTR. #20190744
ZONED: R4

THOMAS M. BURKS AND ELEANOR L. BURKS, TRUSTEES OF THE THOMAS M. BURKS AND ELEANOR L. BURKS FAMILY TRUST DATED APRIL 16, 2019
INSTR. #20190759

- 1 ID SIGN
- 2 WORDMARK & BUTTON CHANNEL LETTERS
- 3 WORDMARK & BUTTON CHANNEL LETTERS
- 4 ADDRESS
- 5 WORDMARK
- 6 BUTTON CHANNEL LETTER
- 7 FAMOUS FINGERZ & SAUCES
- 8 CLEARANCE BAR
- X2 9 DRIVE THRU ORDER CANOPY
- X2 10 LED MENU
- X2 11 PRESELL MENU

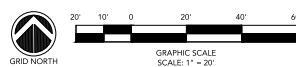
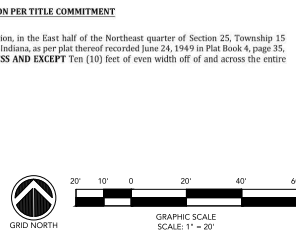


PROJECT INFORMATION	
DRAWING SET PREPARED BY:	CARTER ENGINEERING CONSULTANTS, INC.
OWNER/DEVELOPER:	ZAXBY'S CORP/ARTISAN COMPANY LLC
1010 COMMERCIAL DRIVE	2002 SUMMIT BOULEVARD, 12TH FLOOR
ROGART, GA 30002	ATLANTA, GA 30319
CONTACT: JEFF CARTER, P.E.	CONTACT: TIFAN FERRIN
PHONE: 770.725.1200	706.247.1395
JEFF@CARTERENGINEERING.COM	TIFAN@ZAXBYS.COM

SITE INFORMATION	
JURISDICTION:	CITY OF PLAINFIELD, INDIANA
PROPERTY LOCATION:	2560 E MAIN STREET, PLAINFIELD, IN 46148
PARCEL NUMBER:	30-10-25-020-000012
CURRENT ZONING:	GC (GENERAL COMMERCIAL)
PROPOSED ZONING:	GC (GENERAL COMMERCIAL)
EXISTING USE:	FRENCH/US DEVELOPED VACANT AND PROPOSED USE:
	ZAXBY'S RESTAURANT
REQUIRED BUILDING SETBACKS:	FRONT: 30 FEET
	SIDE: 5 FEET
	REAR: 20 FEET
MAXIMUM BUILDING HEIGHT:	75 FEET
SANITARY SEWER SERVICE:	TOWN OF PLAINFIELD
WATER SERVICE:	TOWN OF PLAINFIELD
FEMA FLOOD INSURANCE RATE MAP NO.:	18063C028D
FEMA FIRM DATE:	09/25/2009
FEMA SPECIAL ZONE:	ZONE X

UNDERGROUND UTILITY DISCLAIMER:
THE UNDERGROUND UTILITIES SHOWN HEREON HAVE BEEN LOCATED FROM FIELD INFORMATION AND/OR EXISTING DRAWINGS. CARTER ENGINEERING DOES NOT WARRANT THAT THE UNDERGROUND UTILITIES SHOWN ARE IN THE EXACT LOCATION INDICATED. THE OWNER, HIS/HER EMPLOYEES, CONSULTANTS AND CONTRACTORS SHALL HEREBY DISTINCTLY UNDERSTAND THAT THE CONTRACTOR SHALL NOT BE RESPONSIBLE FOR THE CORRECTNESS OR JURISDICTION OF THIS INFORMATION REGARDING THE UNDERGROUND UTILITIES AND STRUCTURES RELATED TO UNDERGROUND UTILITIES SHOWN HEREON. IT IS THE RESPONSIBILITY OF THE CONTRACTOR TO RE-LOCATE ALL UTILITIES PRIOR TO COMMENCING WORK AND NOTIFY ENGINEER IF A DISCREPANCY IS FOUND. SPECIFICALLY, THE CONTRACTOR SHALL VERIFY THE INVERT ELEVATIONS OF ALL EXISTING STORM AND SANITARY SEWER STRUCTURES PRIOR TO COMMENCEMENT OF STORM AND SANITARY SEWER CONSTRUCTION.

PARKING CALCULATIONS
The Zaxby's Restaurant includes 26 parking spaces
Consideration for Market Based Parking:
1) Zaxby's has over 900 location in operation and has established a minimum parking standard for a 30 seat store to be 19 parking spaces.
2) There are 3 parking spaces that will be utilized for "curbside" pickup whereby an order is placed via phone and the food is brought to the car.
3) There are 2 ADA compliant parking spaces provided



NO.	REVISION DATE	DESCRIPTION
1		CONTRACT - INITIAL SUBMITTAL
2		ISSUES - REVISIONS
3		ISSUES - REVISIONS
4		ISSUES - REVISIONS
5		ISSUES - REVISIONS
6		ISSUES - REVISIONS
7		ISSUES - REVISIONS
8		ISSUES - REVISIONS
9		ISSUES - REVISIONS
10		ISSUES - REVISIONS
11		ISSUES - REVISIONS

CARTER ENGINEERING
1010 COMMERCIAL DRIVE
ROGART, GA 30622
P: 770.725.1200
F: 770.725.1204
www.carterengineering.com

SITE DEVELOPMENT PLANS
 FOR
ZAXBY'S RESTAURANT
 2560 E MAIN STREET - PLANFIELD, IN 46148

SHEET TITLE: SITE PLAN

PROJECT NAME: **ZAXBY'S**

SHEET NUMBER: **C 3.0**

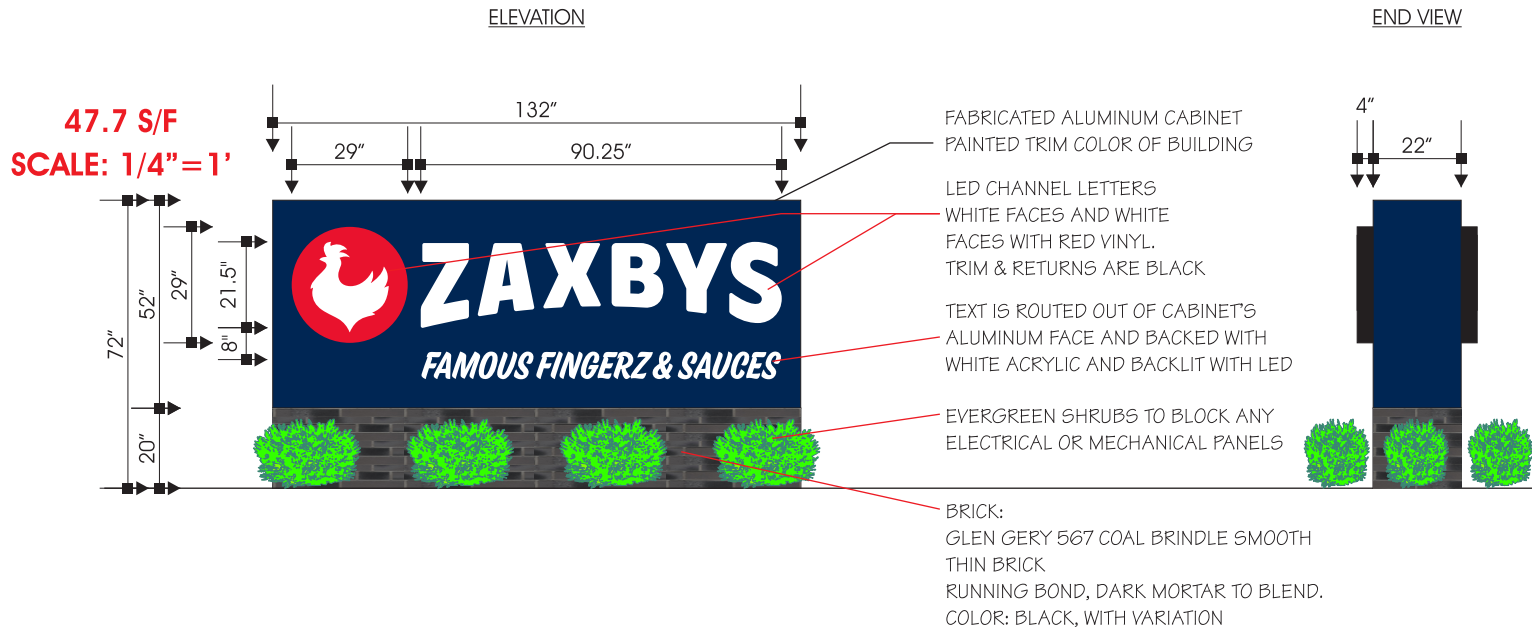
PROJECT NUMBER: **25064ZAX**

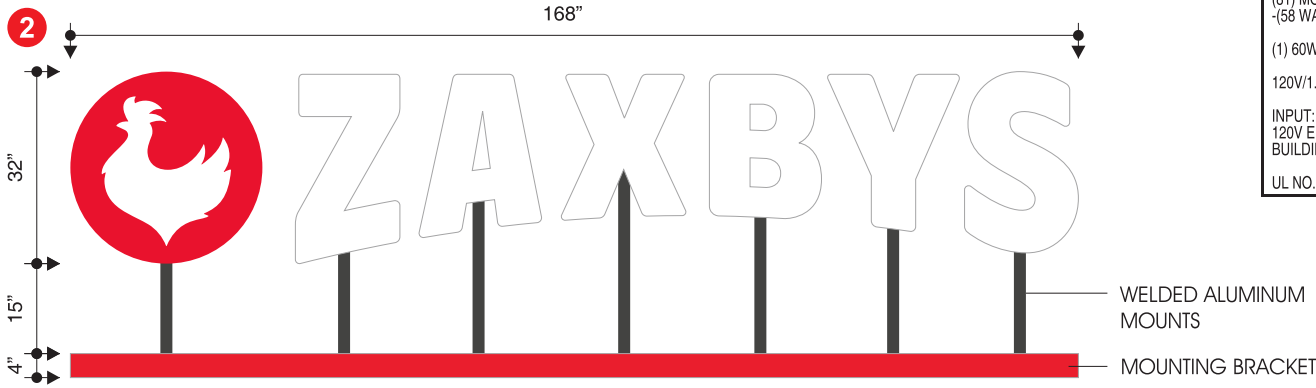
DATE: **12/01/2025**



1

TONGUE TORCH RED PMS 185 C CMYK 0 100 89 0 RGB 228 0 43 #E4002B RAL 3024 (LUMINOUS RED)	WHITE	FOUNDER'S BLUE PMS 282 C CMYK 100 72 0 73 RGB 4 33 86 #041E42 RAL 5013 (COBALT BLUE)
---	--------------	--

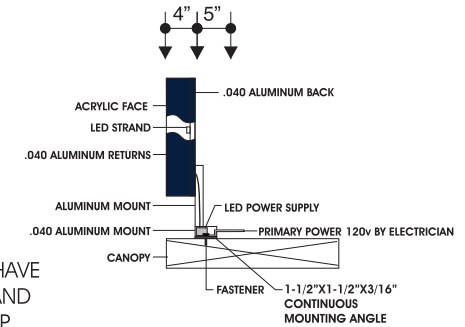




SCALE: 3/8" = 1'
37.3 S/F

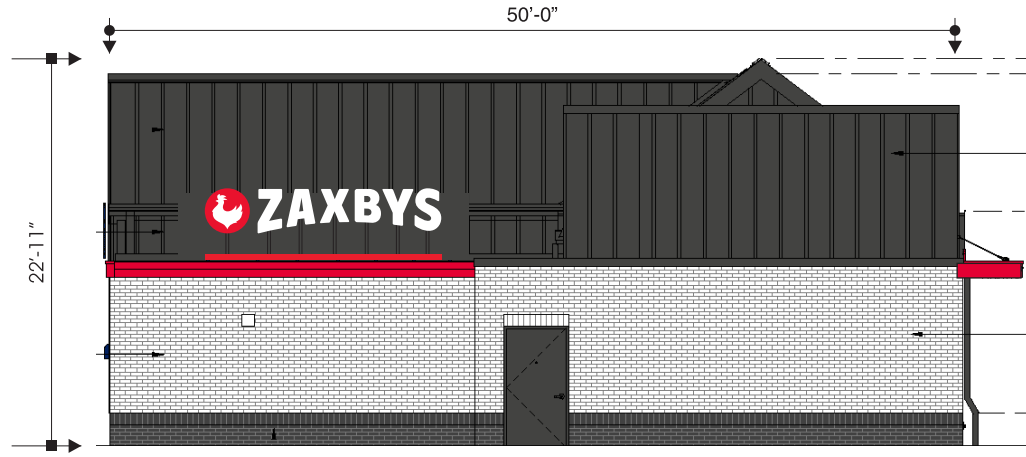
ELECTRICAL NOTES
(81) MODULES WHITE LED
-(58 WATT)
(1) 60W-12V LED DRIVER 1.2 AMPS
120V/1.2 AMPS
INPUT: #12 WIRE / 20 AMP CIRCUIT /
120V ENCASED IN MC CABLE PER
BUILDING ELECTRICAL PLANS
UL NO. 054863

TONGUE TORCH RED PMS 195 C CMYK 0 100 88 0 RGB 228 0 43 #E4002B RAL 3024 (LUMINOUS RED)	WHITE	FOUNDER'S BLUE PMS 282 C CMYK 60 72 0 73 RGB 4 33 66 #041E42 RAL 5013 (COBALT BLUE)
---	--------------	---



NOTES:
- LETTERING WILL HAVE
NAVY RETURNS AND
WHITE TRIMCAP
MOUNTING BRACKET IS TONGUE TORCH RED
ALUMINUM MOUNTS MATCH THE BUILDING.

REAR (EAST) ELEVATION



SIGN SIZE SHOWN ON BUILDING IS APPROXIMATE

61.2 S/F TOTAL

2560 E MAIN ST PLANFIELD, IN.

3



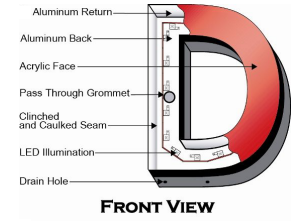
ELECTRICAL NOTES

(81) MODULES WHITE LED
-(58 WATT)

(1) 60W-12V LED DRIVER 1.2 AMPS
120V/1.2 AMPS

INPUT: #12 WIRE / 20 AMP CIRCUIT /
120V ENCASED IN MC CABLE PER
BUILDING ELECTRICAL PLANS

UL NO. 054863



TONGUE TORCH RED

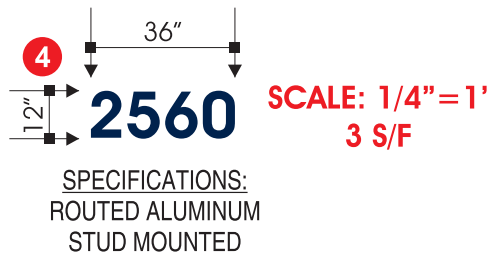
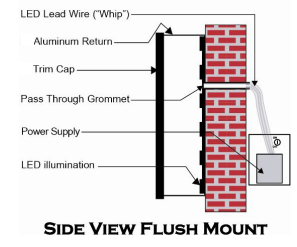
PMS 185 C
CMYK 0 100 89 0
RGB 229 0 45
#E40029
RAL 3024 (LUMINOUS RED)

WHITE

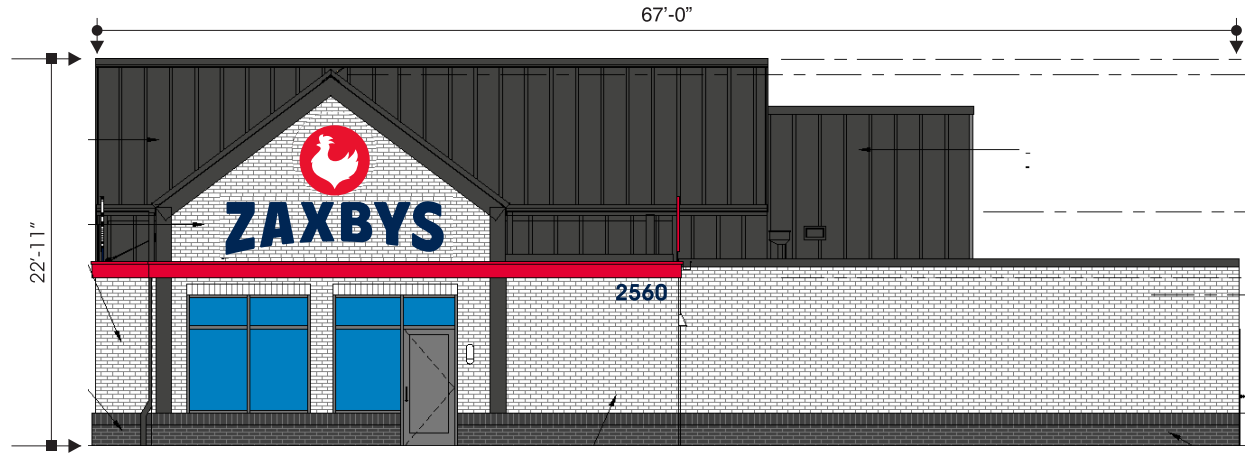
FOUNDER'S BLUE

PMS 282 C
CMYK 100 72 0 73
RGB 4 33 66
#041E42
RAL 5013 (CORALY BLUE)

NOTES:
-LETTERING & LOGO WILL HAVE
BLACK RETURNS AND
BLACK TRIMCAP.

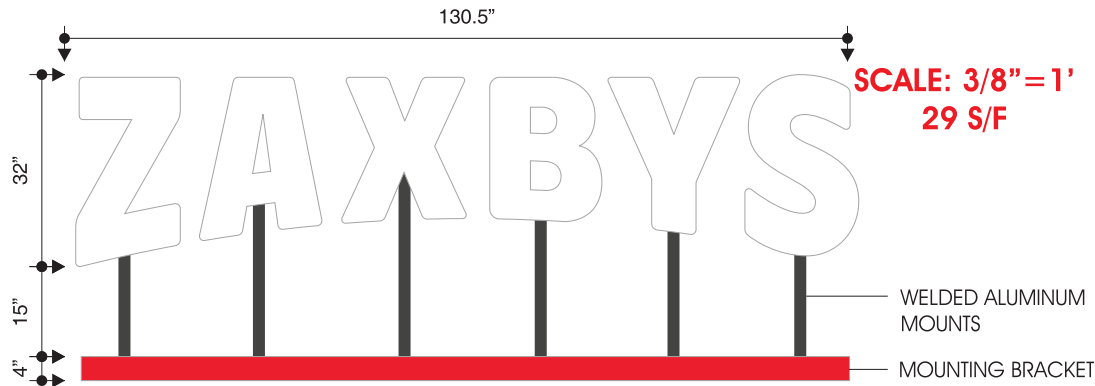


RIGHT (SOUTH) ELEVATION



SIGN SIZE SHOWN ON BUILDING IS APPROXIMATE

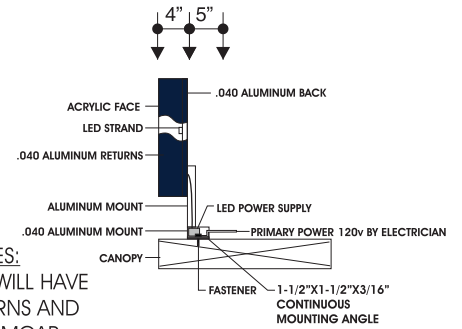
5



SCALE: 3/8" = 1'
29 S/F

ELECTRICAL NOTES

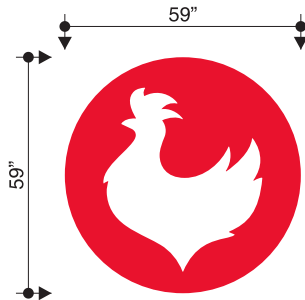
(81) MODULES WHITE LED
-(58 WATT)
(1) 60W-12V LED DRIVER 1.2 AMPS
120V/1.2 AMPS
INPUT: #12 WIRE / 20 AMP CIRCUIT /
120V ENCASED IN MC CABLE PER
BUILDING ELECTRICAL PLANS
UL NO. 054863



NOTES:

-LETTERING WILL HAVE
NAVY RETURNS AND
WHITE TRIMCAP
MOUNTING BRACKET IS TONGUE TORCH RED
ALUMINUM MOUNTS MATCH THE BUILDING.

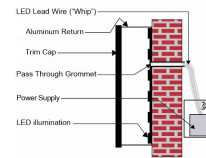
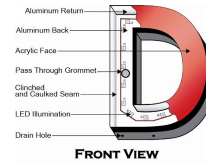
6



SCALE: 1/4" = 1'
24.2 S/F

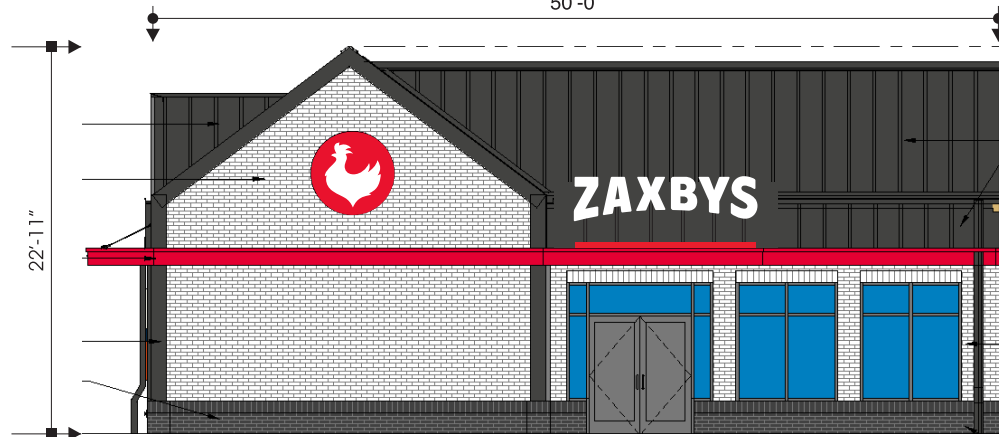
ELECTRICAL NOTES

(81) MODULES WHITE LED
-(58 WATT)
(1) 60W-12V LED DRIVER 1.2 AMPS
120V/1.2 AMPS
INPUT: #12 WIRE / 20 AMP CIRCUIT /
120V ENCASED IN MC CABLE PER
BUILDING ELECTRICAL PLANS
UL NO. 054863



NOTES:
-LOGO WILL HAVE
BLACK RETURNS AND
BLACK TRIMCAP.

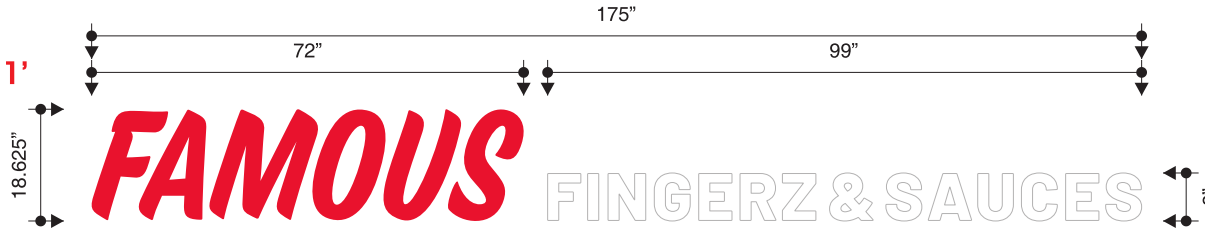
FRONT (WEST) ELEVATION



SIGN SIZE SHOWN ON BUILDING IS APPROXIMATE

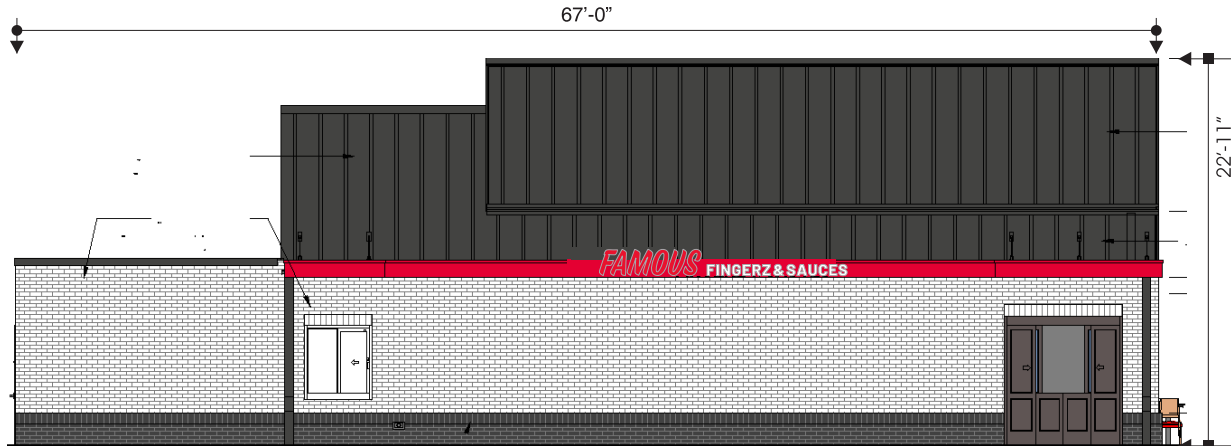
7

SCALE: 3/8" = 1'
22.6 S/F



SPECIFICATIONS:
ROUTED ACM. FACES ARE PAINTED
TONGUE TORCH RED AND WHITE.
LETTERS MOUNT TO FACE
OF CANOPY.

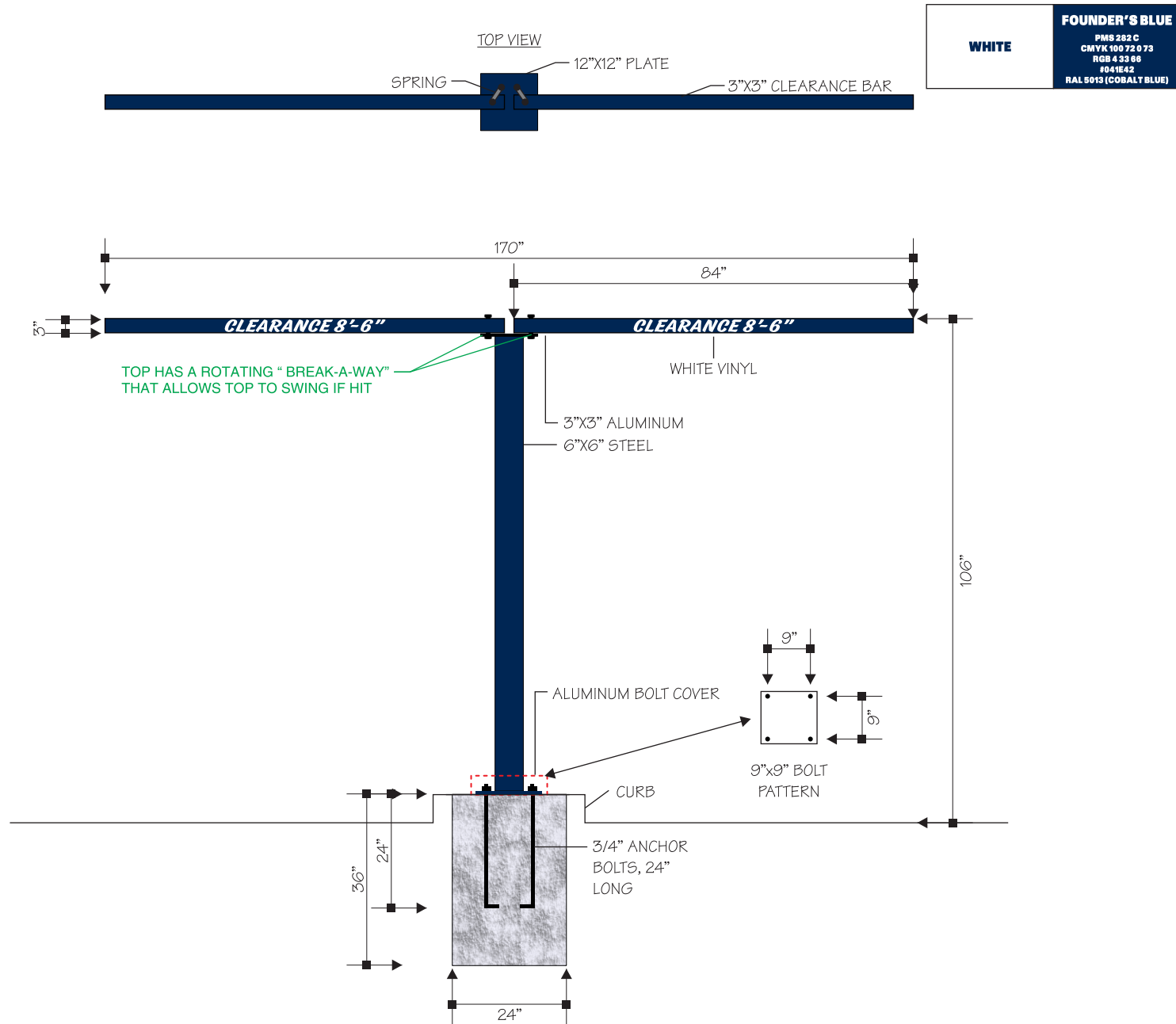
LEFT (NORTH) ELEVATION



SIGN SIZE SHOWN ON BUILDING IS APPROXIMATE

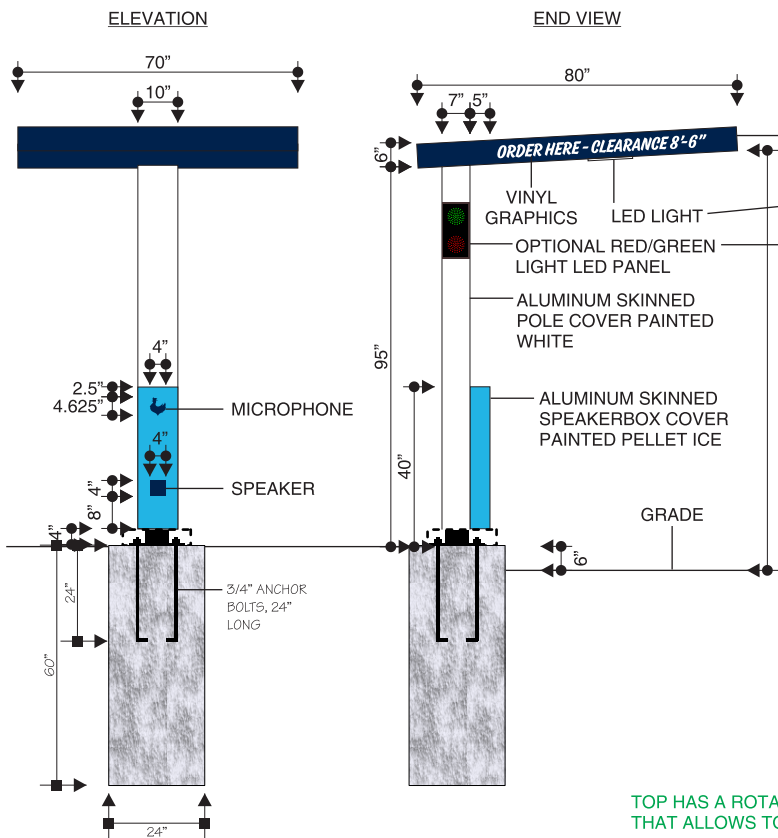
2560 E MAIN ST PLANFIELD, IN.

8



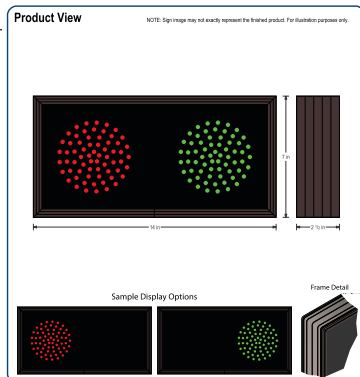
2560 E MAIN ST PLANFIELD, IN.

9
QTY:2



LED LIGHT:
ROUND SLIM 6", 15W RECESSED LIGHT
INPUT VOLTAGE: 110-120V
POWER: 15W
CRI: 80+
OPTICS: 120 DEGREES
SUITABLE FOR DAMP LOCATION
5 COLOR OPTIONS: 2700K, 3000K, 4000K AND 5000K

WHITE	FOUNDER'S BLUE	PELLET ICE BLUE
	PMS 282 C CMYK 100 72 0 73 RGB 4 33 66 #041E42 RAL 5013 (COBALT BLUE)	PMS 289 C CMYK 63 3 0 0 RGB 65 182 230 #41B8E6 RAL 230 70 30 (FITNESS BLUE)



PRODUCT ID: 10893
Outdoor Blank-out LED Direct-view Sign

MODEL
TCL714RG-225/120-277VAC

DIMENSIONS
7" H x 14" W x 2.5" D (est. 3.435 lbs)

CLASS
CLASS TCL Series
Control Method: Switch (not included) or external relay.

CONSTRUCTION
Back Construction: 0.030" Lift-Off-Shift Back
Cabinet: 1-piece, corrosion resistant, extruded aluminum frame, 2.5" deep.
Face Material: 1/8" impact resistant, smoke-tinted polycarbonate (5109)
Faces: Single Faced Sign
Finish: Duraodic Bronze
Mounting Channel: None

ELECTRICAL
Flashing: Not Included
Input Voltage: 120-277 VAC
Photodimming: None
UL/cUL Listed: Listed for wet locations

MESSAGE
Illumination: Super bright direct view LEDs. Message blanks out when off.
Sign Messages: See message table below.

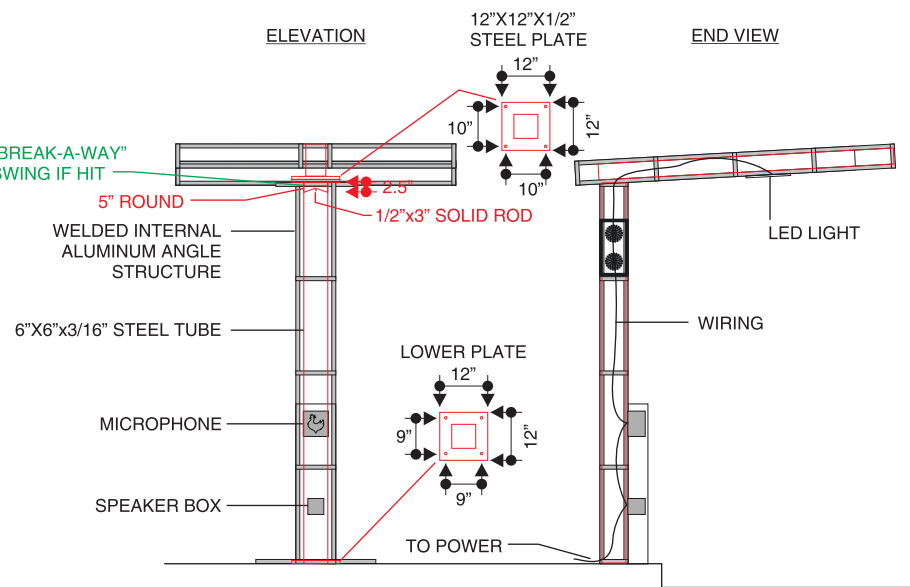
MESSAGE	LED/COLOR	HEIGHT	AMPS
Red Indicator Dot	Red Wide Angle LED	4.0"	0.025/0.04
Green Indicator Dot	Green Wide Angle LED	4.0"	0.030/0.02

NOTE: Above messages are independently controlled.

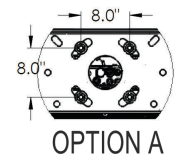
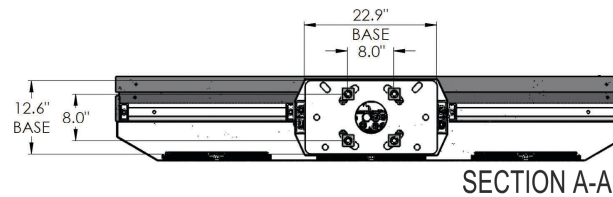
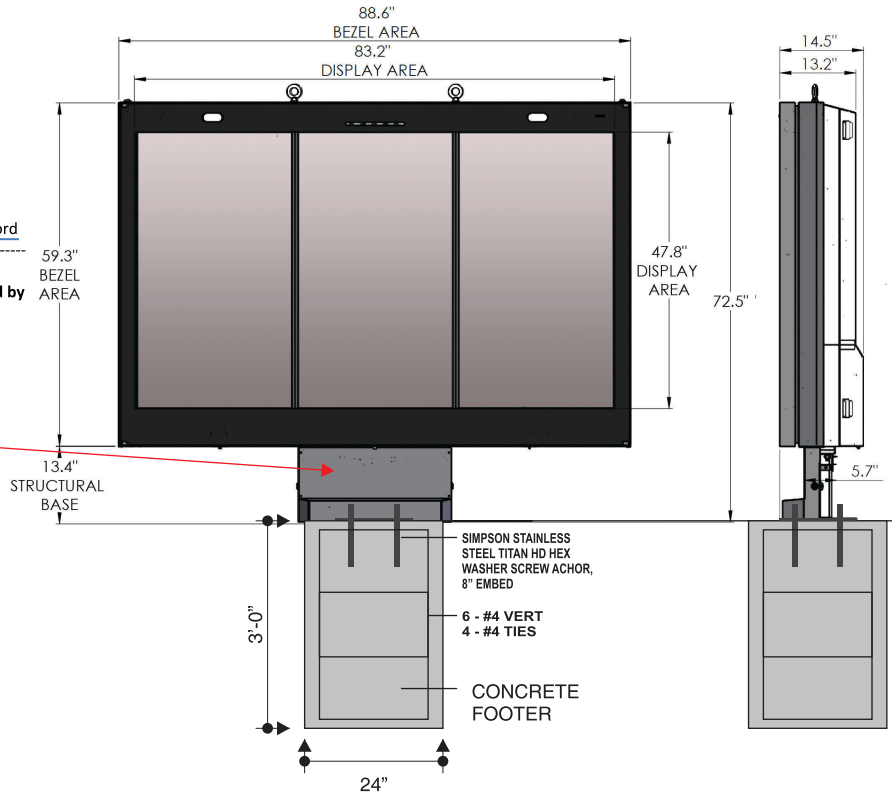
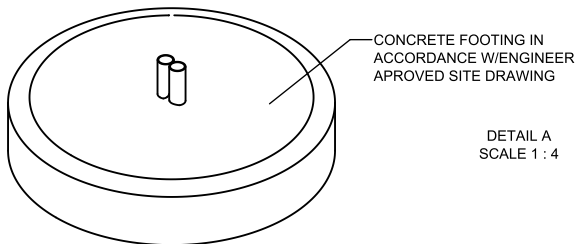
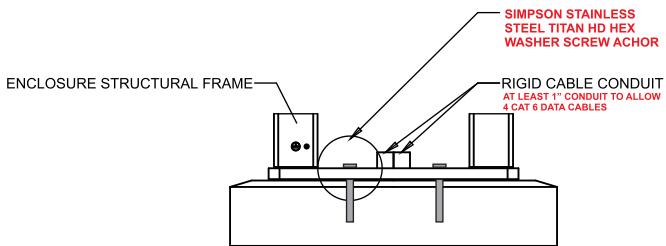
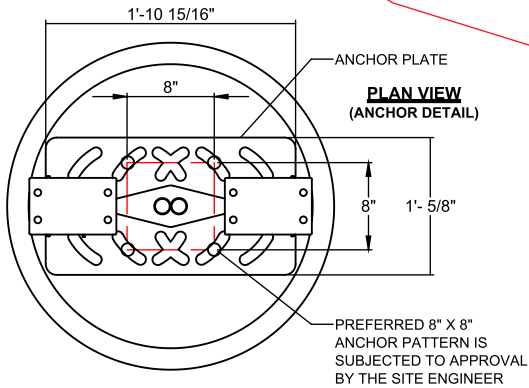
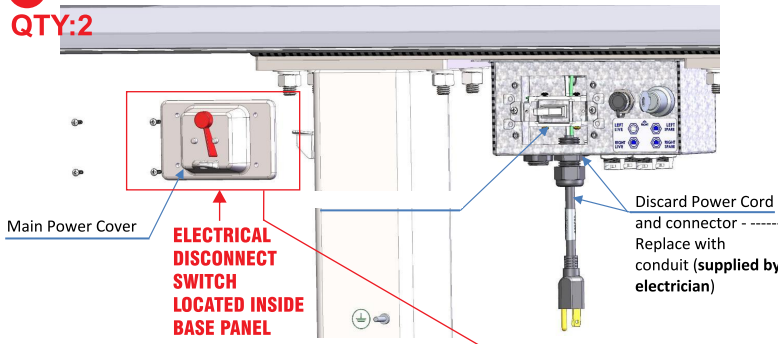
Signal-Tech
4985 Pittsburgh Ave.
Erie, PA 16569
Phone: (877) 547-5900
Fax: (814) 635-2300
Email: sales@signal-tech.com
Website: www.signal-tech.com

Copyright (C) 2023 Signal-Tech

TOP HAS A ROTATING "BREAK-A-WAY" THAT ALLOWS TOP TO SWING IF HIT



10 TRI PANEL LED MENU BOARD
QTY:2



GENERAL SPECS

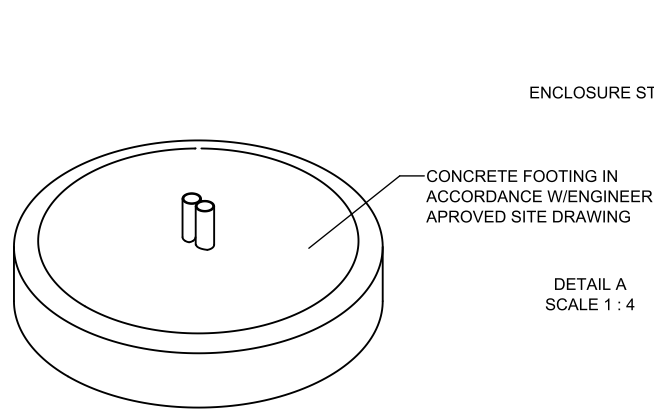
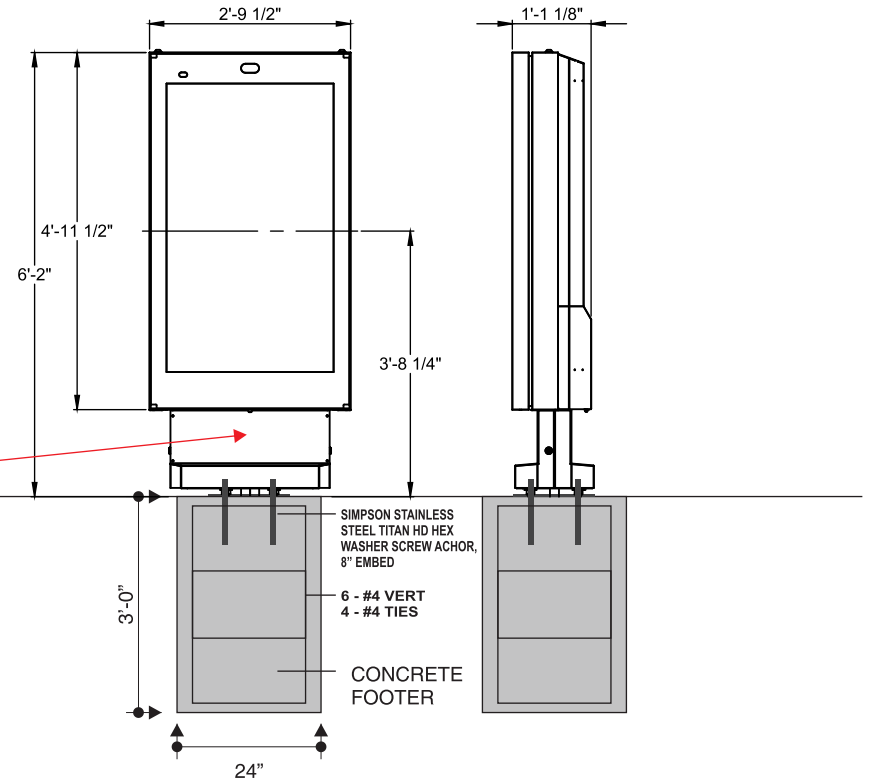
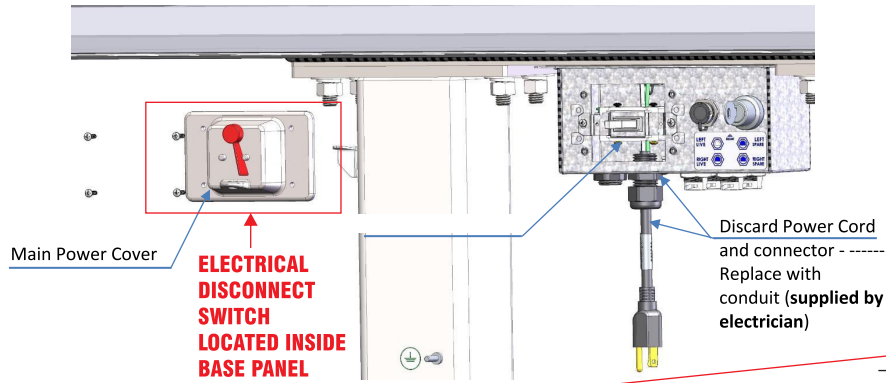
- Material: Aluminum exterior with tube steel inner frame. Certified 180 MPH
- Surface Treatment:
 - Pretreatment - zinc primer & polyester powder coating
- Surface Area:
 - Display: 27.6 sq/ft
 - Total surface: 36.5 sq/ft
- Weight:
 - Gross: tbd lbs / Net: tbd lbs

ELECTRICAL SPECS

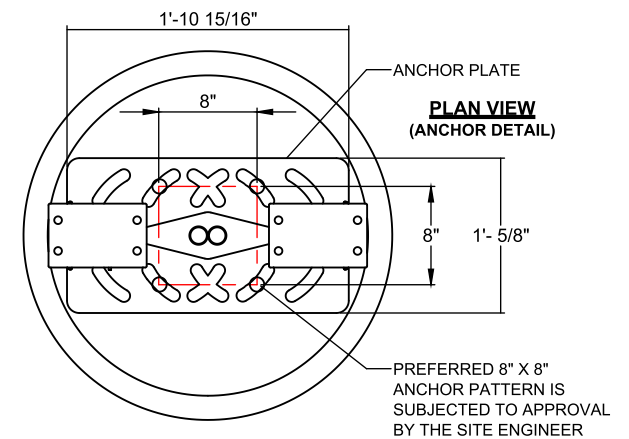
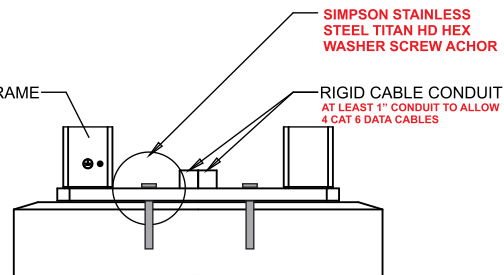
- Power:
 - Hardwired AC Power
 - 120/240V 50/60Hz
 - 1450 W (@ max load)
 - UL Rated @ 13 Amp
- Backlight:
 - LED Light Source
 - 380 CD/M2 to 3,500 CD/M2
 - Auto adjusting to outdoor ambient light levels

11 LED PRE-SALE BOARD

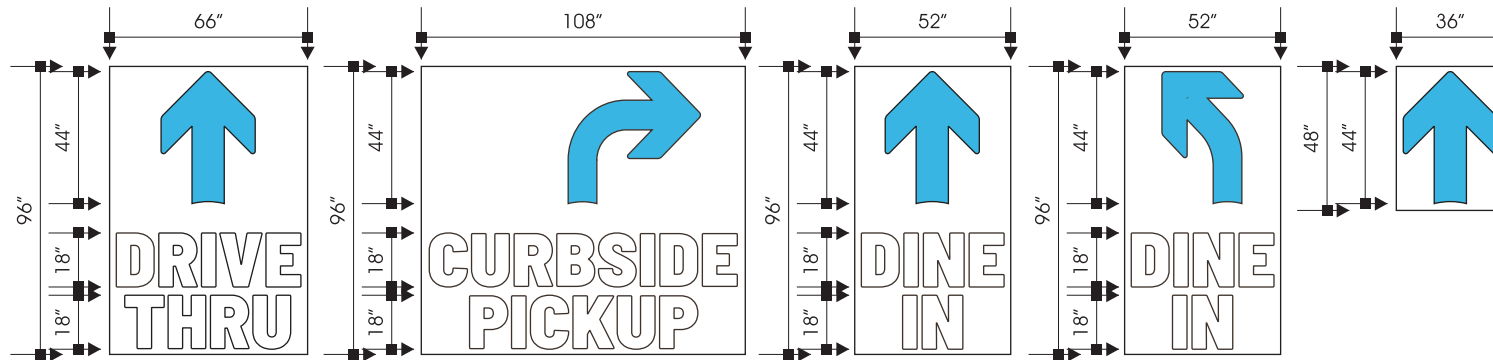
QTY:2



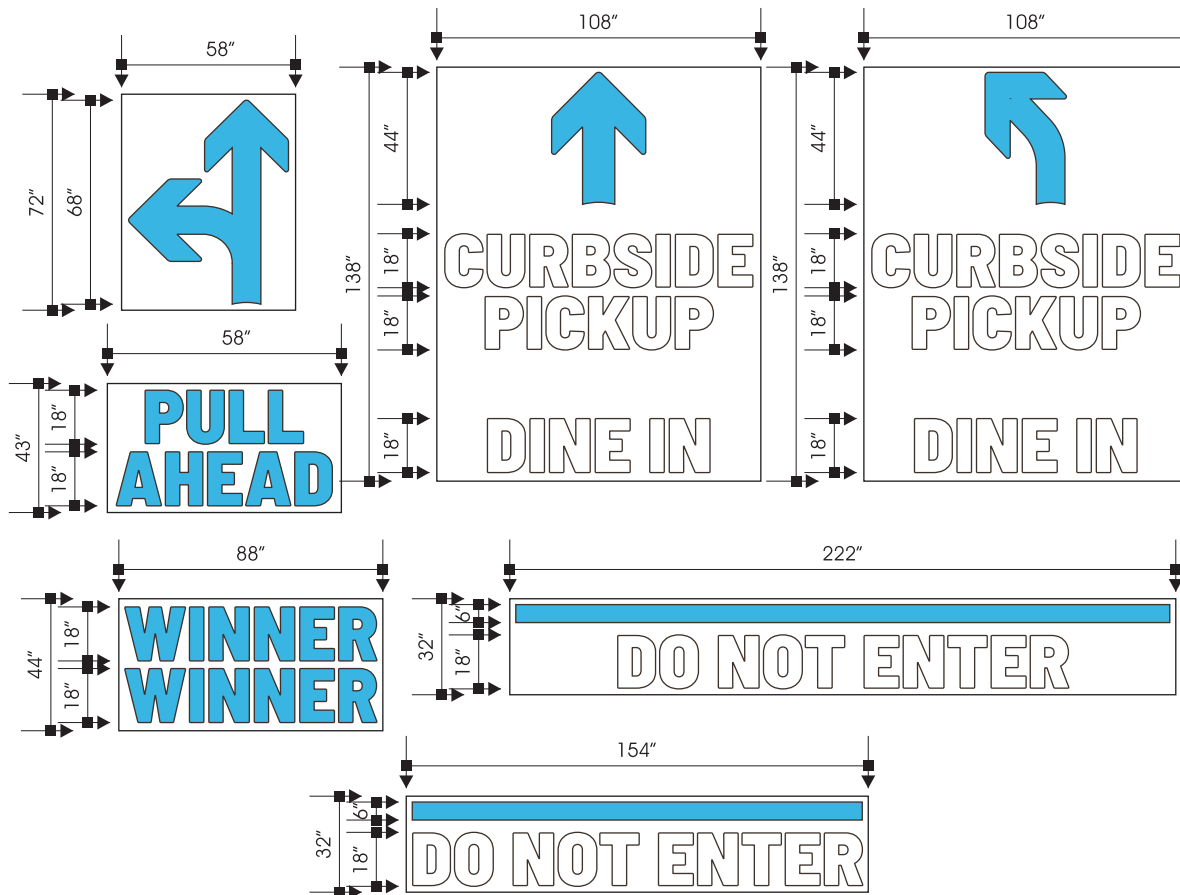
DETAIL A
SCALE 1:4



2560 E MAIN ST PLANFIELD, IN.



WHITE	PELLET ICE BLUE
	PMS 298 C
	CMYK 63 30 0
	RGB 65 182 230
	#4B8665
	RAL 230 76 30 (FITNESS BLUE)



SPECIFICATIONS:

ROUTED 1/8" LOW DENSITY WHITE POLYETHYLENE. COLORS SHOWN ARE PAINT COLORS FOR THE PARKING LOT, WHITE & PMS 298C BLUE

TONGUE TORCH RED PMS 165 C CMYK 0 100 50 0 RGB 228 0 43 #E4002B RAL 3024 (LUMINOUS RED)	WHITE	FOUNDER'S BLUE PMS 282 C CMYK 100 72 0 73 RGB 4 33 96 #041E42 RAL 5013 (COBALT BLUE)	PELLET ICE BLUE PMS 289 C CMYK 63 3 0 0 RGB 65 182 230 #4198E6 RAL 230 70 30 (FITNESS BLUE)
---	--------------	--	---

SPECIFICATIONS:
PRINTED ACM PANELS

