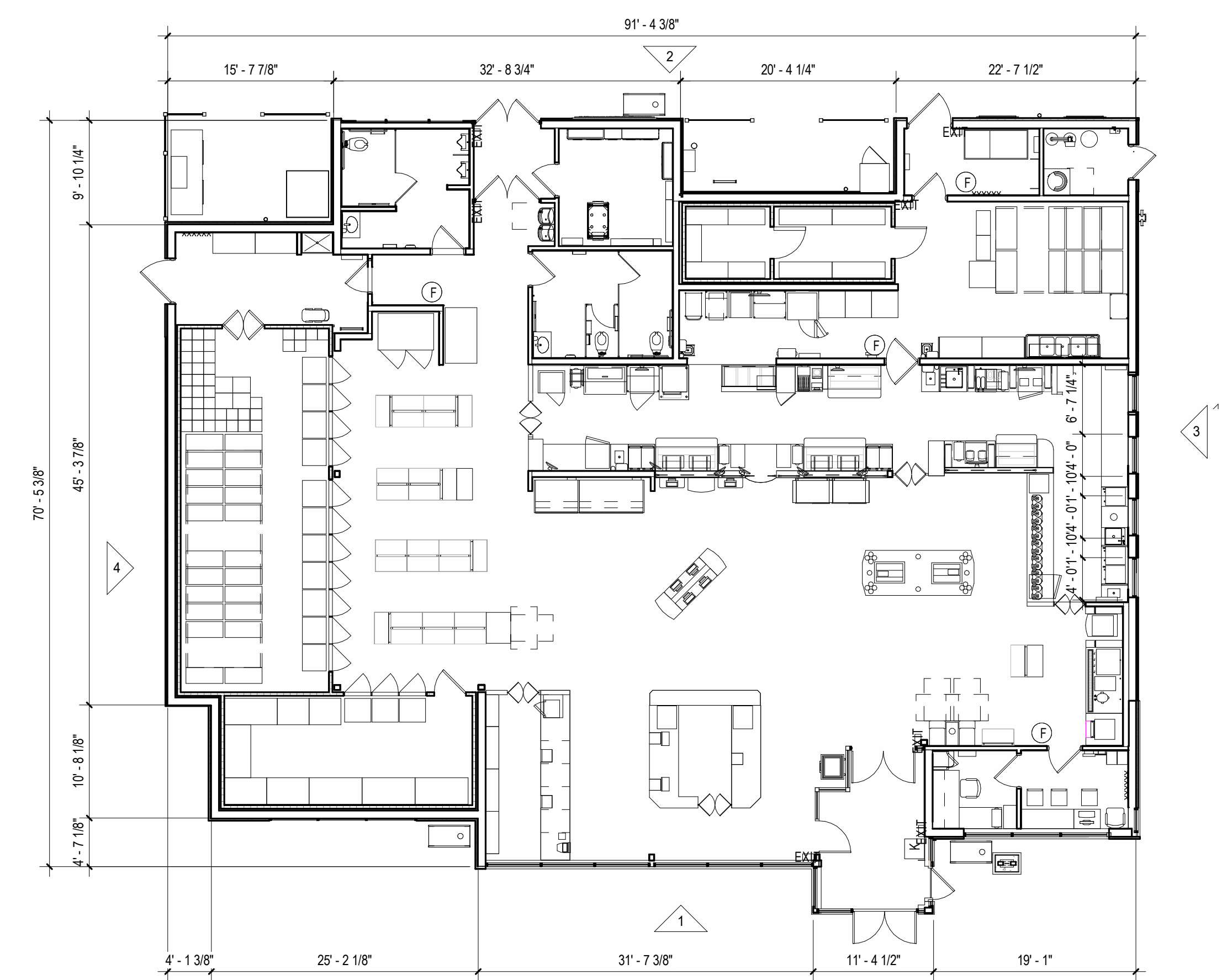


1 FRONT - SOUTH ELEVATION
3/16" = 1'-0"

CLASS (I) MATERIALS: CULTURED STONE = 28.8% 28.8 x 8 = 230.4	CLASS (II) MATERIALS: BRICK = 32.9% GLASS = 24.5% METAL = 4.5% 61.9 x 6 = 371.4	CLASS (III) MATERIALS: SPANDREL = 9.1% 9.1 x 2 = 18.2 (230.4 + 371.4 + 18.2) / 200 = 3.1 > 3	MATERIAL CALCS - SIDE SOUTH ELEVATION: BRICK - 589 SOFT CULTURED STONE - 515 SOFT CLEAR GLAZING - 439 SOFT SPANDREL GLASS - 163 SOFT SUNSHADE - 81 SOFT TOTAL BUILDING ELEVATION SF - 1,786 SOFT
---	--	--	--



5 FLOOR PLAN
1" = 10'-0"

MATERIALS:

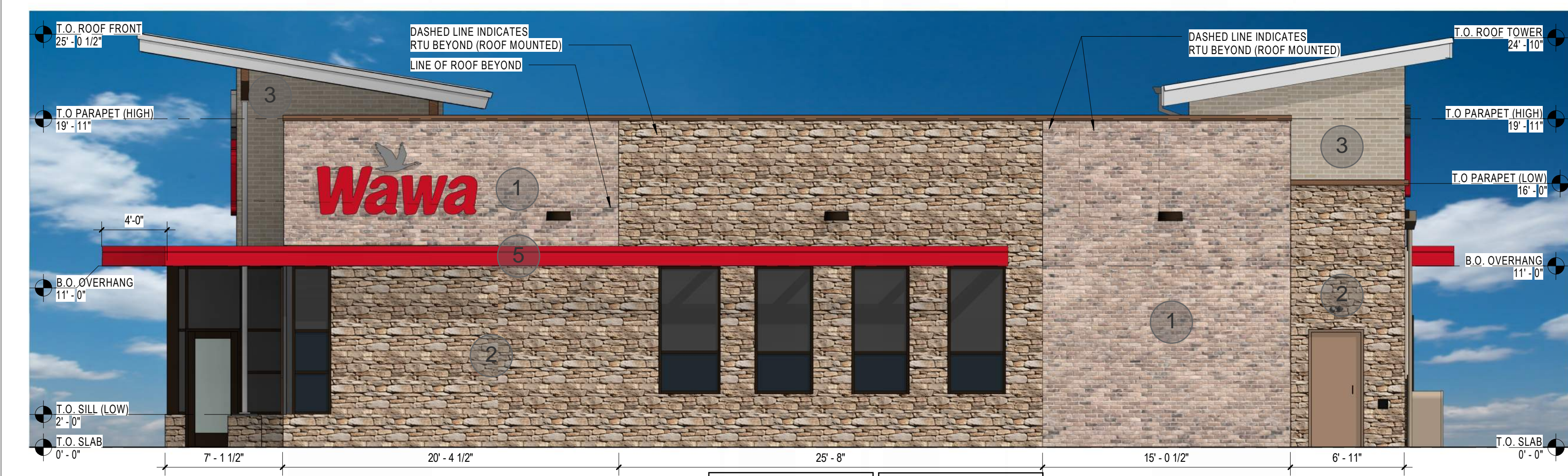


EXTERIOR FINISH PACKAGE: CULTURED STONE



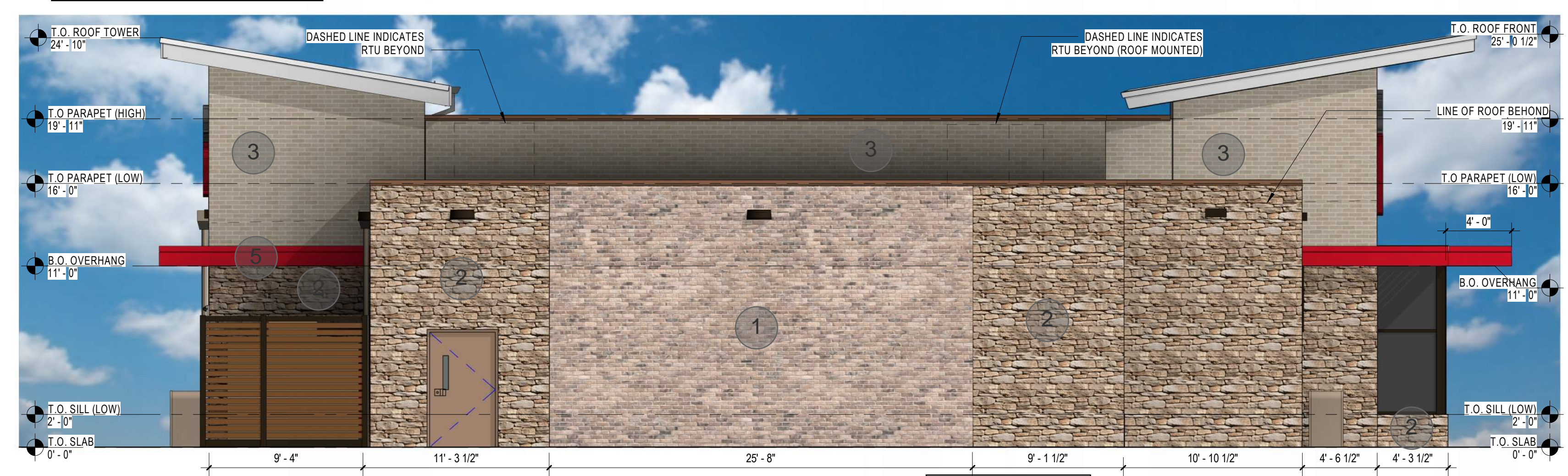
2 FRONT - NORTH ELEVATION
3/16" = 1'-0"

CLASS (I) MATERIALS: CULTURED STONE = 42.5% 42.5 x 8 = 340	CLASS (II) MATERIALS: BRICK = 44.9% GLASS = 2.5% METAL = 2.6% 50 x 6 = 300	CLASS (III) MATERIALS: SPANDREL = 7.4% 7.4 x 2 = 14.8 (340 + 300 + 14.8) / 200 = 3.27 > 3.25	MATERIAL CALCS - FRONT NORTH ELEVATION: BRICK - 835 SOFT CULTURED STONE - 790 SOFT CLEAR GLAZING - 47 SOFT SPANDREL GLASS - 139 SOFT SUNSHADE - 48 SOFT TOTAL BUILDING ELEVATION SF - 1,859 SOFT
---	---	--	--



3 FRONT - EAST ELEVATION
3/16" = 1'-0"

CLASS (I) MATERIALS: CULTURED STONE = 48.1% 48.1 x 8 = 384.8	CLASS (II) MATERIALS: BRICK = 32.1% GLASS = 11.5% METAL = 4.6% 48.2 x 6 = 289.2	CLASS (III) MATERIALS: SPANDREL = 3.6% 3.6 x 2 = 7.2 (384.8 + 289.2 + 7.2) / 200 = 3.4 > 3.25	MATERIAL CALCS - FRONT EAST ELEVATION: BRICK - 448 SOFT CULTURED STONE - 671 SOFT CLEAR GLAZING - 161 SOFT SPANDREL GLASS - 50 SOFT SUNSHADE - 64 SOFT TOTAL BUILDING ELEVATION SF - 1,394 SOFT
---	--	---	---



4 SIDE - WEST ELEVATION
3/16" = 1'-0"

CLASS (I) MATERIALS: CULTURED STONE = 44.4% 44.4 x 8 = 358.4	CLASS (II) MATERIALS: GLASS = 2.6% BRICK = 50.6% METAL = 2.3% 55.5 x 6 = 333	MATERIAL CALCS - SIDE WEST ELEVATION: CULTURED STONE - 627 SOFT BRICK - 714 SOFT CLEAR GLAZING - 37 SOFT SUNSHADE - 33 SOFT TOTAL BUILDING ELEVATION SF - 1,411 SOFT
---	---	---