

REPLAT OF SARATOGA VILLAGE, SECTION 1, PHASE 1 - FINAL PLAT

PART OF THE NW 1/4, SEC. 34, PART OF THE NE 1/4, SEC. 33-T15N-R1E & EASEMENT AREA "A" IN SARATOGA COMMERCIAL LOTS 5,6,7 & BLOCK B PLAINFIELD, HENDRICKS COUNTY, INDIANA

REPLAT OF SARATOGA VILLAGE, SECTION 1, PHASE 1 - FINAL PLAT

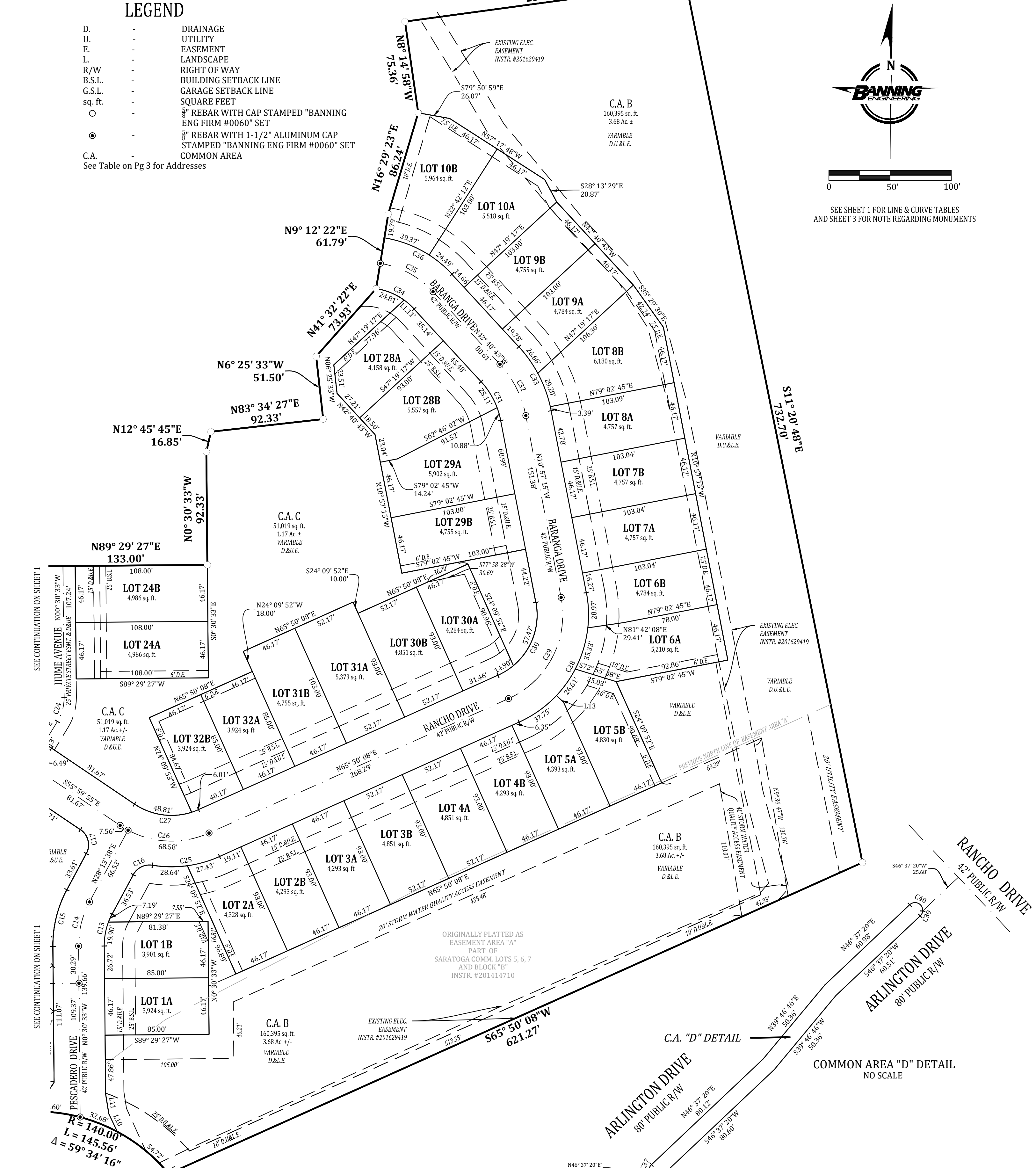
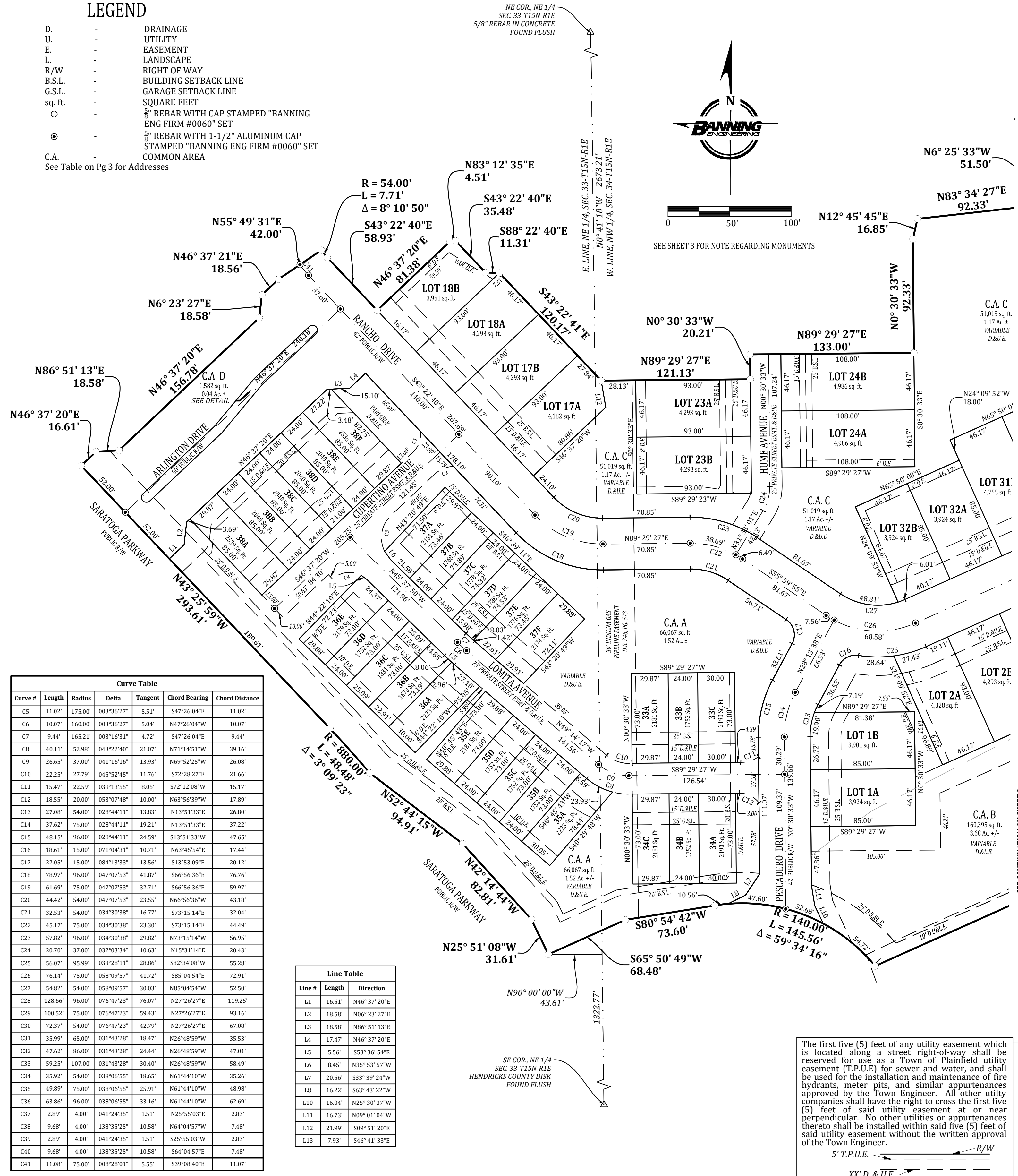
PART OF THE NW 1/4, SEC. 34, PART OF THE NE 1/4, SEC. 33-T15N-R1E & EASEMENT AREA "A" IN SARATOGA COMMERCIAL LOTS 5,6,7 & BLOCK B PLAINFIELD, HENDRICKS COUNTY, INDIANA

LEGEND

- D. - DRAINAGE
 - U. - UTILITY
 - E. - EASEMENT
 - L. - LANDSCAPE
 - R/W - RIGHT OF WAY
 - B.S.L. - BUILDING SETBACK LINE
 - G.S.L. - GARAGE SETBACK LINE
 - sq. ft. - SQUARE FEET
 - - 1/2" REBAR WITH CAP STAMPED "BANNING ENG FIRM #0060" SET
 - - 1/2" REBAR WITH 1-1/2" ALUMINUM CAP STAMPED "BANNING ENG FIRM #0060" SET
 - C.A. - COMMON AREA
- See Table on Pg 3 for Addresses

LEGEND

- D. - DRAINAGE
 - U. - UTILITY
 - E. - EASEMENT
 - L. - LANDSCAPE
 - R/W - RIGHT OF WAY
 - B.S.L. - BUILDING SETBACK LINE
 - G.S.L. - GARAGE SETBACK LINE
 - sq. ft. - SQUARE FEET
 - - 1/2" REBAR WITH CAP STAMPED "BANNING ENG FIRM #0060" SET
 - - 1/2" REBAR WITH 1-1/2" ALUMINUM CAP STAMPED "BANNING ENG FIRM #0060" SET
 - C.A. - COMMON AREA
- See Table on Pg 3 for Addresses



Witness my signature this 7th day of August, 2023.

Signature: Kevin W. Rowland - Professional Surveyor - Indiana - #LS29600015



PRELIMINARY PLAT	FINAL PLAT	RECORDING	Drawn:
Checked: Date:	Checked: Date:	Checked: Date:	CH
Scale: 1"=50'			Date: 04/25/23
Project: 21013-S1			Sheet 1 of 3

Witness my signature this 7th day of August, 2023.

Signature: Kevin W. Rowland - Professional Surveyor - Indiana - #LS29600015



PRELIMINARY PLAT	FINAL PLAT	RECORDING	Drawn:
Checked: Date:	Checked: Date:	Checked: Date:	CH
Scale: 1"=50'			Date: 04/25/23
Project: 21013-S1			Sheet 2 of 3