

**BENCHMARK INFORMATION**

ORIGINATING BENCHMARK  
 L-61 (PID: KA0040)  
 1.2 MILES SOUTHEAST FROM PLAINFIELD

ABOUT 1.2 MILES ALONG STATE HIGHWAY 267 FROM ITS JUNCTION WITH U.S. HIGHWAY 40 AT PLAINFIELD, AT A CROSS ROAD, 45 FEET WEST OF AND ABOUT LEVEL WITH THE CENTER LINE OF THE HIGHWAY, 26 FEET NORTH OF THE CENTER LINE OF THE ENTRANCE TO THE EDWARD CUMMINGS FARM, 14 FEET NORTHWEST OF THE NORTH END OF A 12-INCH CORRUGATED PIPE CULVERT, 7 FEET WEST OF TELEPHONE POLE NO. 36-H 62, 4 FEET WEST OF A CONCRETE FENCE CORNER POST, AND 2 FEET EAST OF A WHITE WOODEN WITNESS POST. A STANDARD DISK, STAMPED L 61 1946 AND SET IN THE TOP OF A CONCRETE POST PROJECTING 8 INCHES ABOVE GROUND.

ELEV: 715.41 (NAVD 88)

**LAND DESCRIPTION**

LOT NUMBERED TWO (2) IN CAMBRIDGE SQUARE WEST, PHASE 1, A SUBDIVISION IN THE TOWN OF PLAINFIELD, HENDRICKS COUNTY, INDIANA, AS PER PLAT THEREOF AS RECORDED MARCH 4, 1988 IN PLAT BOOK 15, PAGES 34-35 AND SURVEYOR'S CERTIFICATE OF ERROR RECORDED MARCH 23, 1988 AS BOOK 114, PAGE 66 IN THE OFFICE OF THE RECORDER OF HENDRICKS COUNTY, INDIANA.

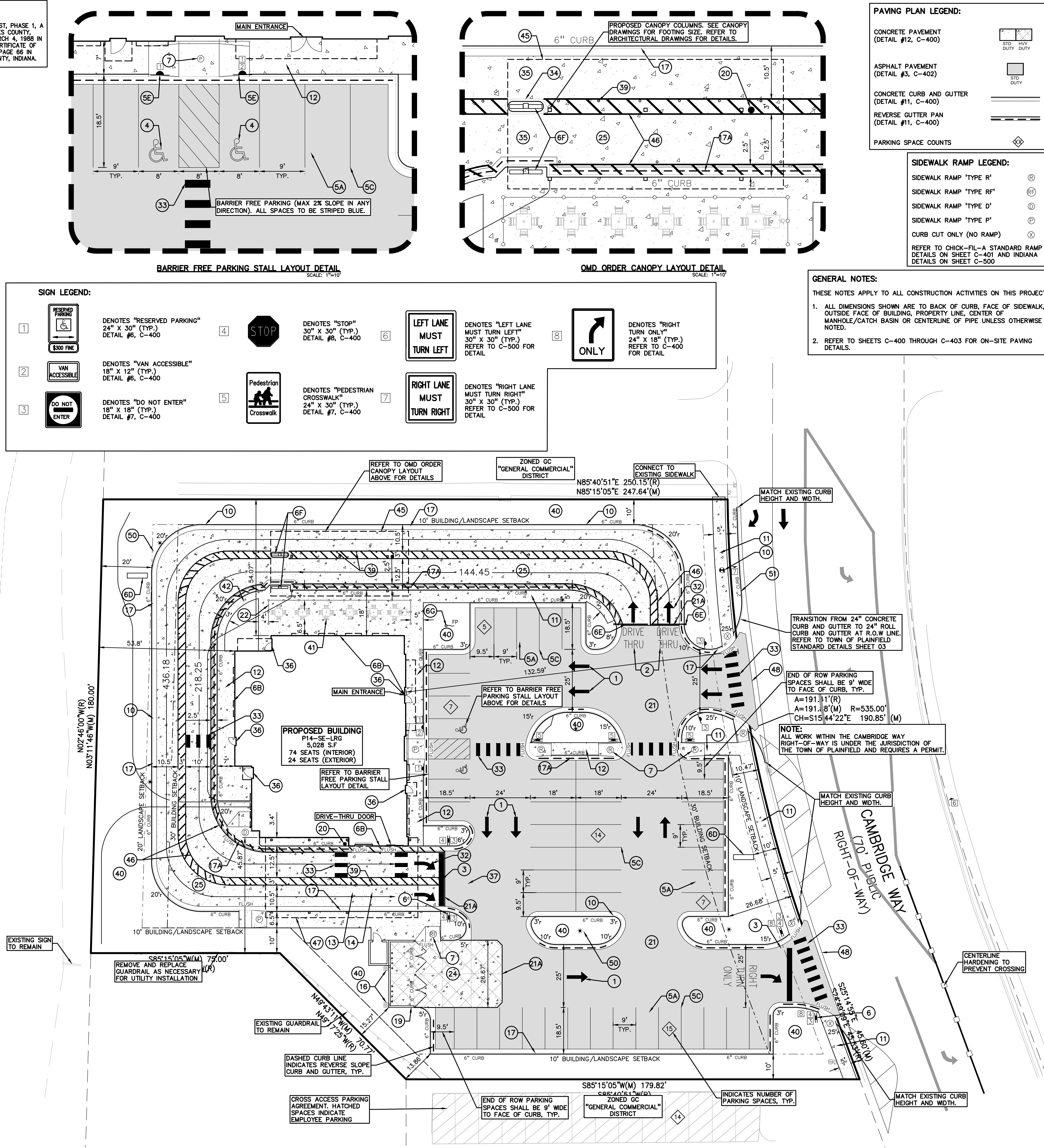
**KEY NOTES:**

- 1 DIRECTIONAL ARROW (DETAIL #1, C-400 & DETAIL #6, C-402)
- 2 DRIVE-THRU GRAPHICS (DETAIL #2, C-400)
- 3 STOP LINE GRAPHICS (DETAIL #2, C-400)
- 4 PAINTED BARRIER FREE PARKING SYMBOL
- 5A STANDARD PARKING STALL (9'x18') PER CODE (DETAIL #3, C-400)
- 5B STANDARD 60 DEGREE PARKING STALL (DETAIL #4, C-400)
- 5C 4" SOLID WHITE STRIPING
- 5D SOLID YELLOW STRIPING
- 5E BOLLARD MOUNTED SIGN (DETAIL #5, C-400)
- 6 DIRECTIONAL SIGNAGE (DETAIL #7 & #8, C-400)
- 7 ALL SIGNS SHALL CONFORM TO THE "MANUAL ON UNIFORM TRAFFIC CONTROL DEVICES" BY THE U.S. DEPARTMENT OF TRANSPORTATION. (SEE SIGN LEGEND)
- 8A CHICK-FIL-A Pylon SIGN, SEE SIGNAGE PACKAGE
- 8B WALL MOUNTED "CHICK-FIL-A" SIGN, SEE SIGNAGE PACKAGE
- 8C CHICK-FIL-A Exit SIGN, SEE SIGNAGE PACKAGE
- 8D CHICK-FIL-A MONUMENT SIGN, SEE SIGNAGE PACKAGE
- 8E CLEARANCE BAR (DETAIL #10, C-403), SEE SIGNAGE PACKAGE
- 8F MENU ORDER BOARDS, SEE SIGNAGE PACKAGE
- 8G FLAGPOLE, 50', SEE SIGNAGE PACKAGE
- 8H SIDEWALK ADA COMPLIANT RAMP (SEE RAMP LEGEND) (DETAIL #3, C-401)
- 8I HANDICAP RAMP W/ FLARED SIDES (IN-SIDEWALK) (DETAIL #9, C-403)
- 8J HANDICAP RAMP W/ SHORT FLARED SIDES (DETAIL #1, C-401)
- 9 RETURNED CURB HANDICAP RAMP
- 10 UTILITY STRUCTURE RIM, TYP.
- 11 TYPICAL CONCRETE SIDEWALK, 5' MIN. (DETAIL #9, C-400)
- 12 SIDEWALK W/ CURB & GUTTER (DETAIL #10, C-400)
- 12A INTEGRAL CURB & 7" WIDE SIDEWALK
- 13 DRIVE-THRU PLAN (DETAIL #8, C-403)
- 14 DRIVE-THRU ISOMETRIC (DETAIL #9, C-403)
- 15 SOLID PLASTIC WHEEL STOP (DETAIL #5, C-401)
- 16 GRAVEL DRAINAGE STRIP
- 17 24" CONCRETE CURB & GUTTER (DETAIL #11, C-400)
- 17A 24" CONCRETE CURB & REVERSE GUTTER (DETAIL #11, C-400)
- 18 ROLL-OVER/MOUNTABLE CURB (DETAIL #11, C-403)
- 19 REFUSE ENCLOSURE FOUNDATION (DETAIL #2, C-403)

- 20 CONCRETE BOLLARD (DETAIL #5, C-402)
- 21 TYPICAL PAVEMENT SECTION (REFER TO PAVING PLAN LEGEND)
- 21A PAVEMENT EDGE DETAIL (DETAIL #11, C-401)
- 21B CONCRETE APRON SECTION
- 22 ALUMINUM HANDRAIL (DETAIL #6, C-402)
- 23 TYPICAL STAIR HANDRAIL (DETAIL #6, C-402)
- 24 CONCRETE APRON @ TRASH ENCLOSURE (DETAIL #12, C-401)
- 25 CONCRETE PAVING @ DRIVE-THRU LANE (DETAIL #2, C-402)
- 26 TRANSVERSE & LONGITUDINAL CONTRACTION JOINT (DETAIL #10, C-401)
- 27 TRANSVERSE & LONGITUDINAL DOWELED CONTRACTION JOINT (DETAIL #7, C-401)
- 28 CONTRACTION JOINT (DETAIL #6, C-401)
- 29 DOWELED CONTRACTION JOINT (DETAIL #6, C-401)
- 30 LONGITUDINAL GUT JUNCTION (DETAIL #1, C-403)
- 31 EXPANSION JOINT (DETAIL #6, C-401)
- 32 DRIVE-THRU DIRECTIONAL GRAPHICS
- 33 CROSSWALK DETAIL (DETAIL #7, C-402)
- 34 DRIVE-THRU ORDER POINT ISLAND CURB (DETAIL #7, C-403)
- 35 MENU BOARD LOOP DETECTION SYSTEM (DETAIL #5 & #6, C-403)
- 36 ENTRY DOOR FROST SLAB (DETAIL #1, C-403)
- 37 GREASE TRAP
- 38 RETURNING WALL
- 39 PROPOSED TRANSFORMER
- 39 MAGNETIC LANE DELINEATORS
- 40 LANDSCAPE AREA (REFER TO LANDSCAPE PLANS FOR DETAILS)
- 41 TYPICAL LOCATION FOR OUTDOOR TABLES (SEE EQUIPMENT SCHEDULE)
- 42 SIDEWALK FOR CASH PAYMENT ZONE
- 43 CONCRETE SPILLWAY
- 44 BIKE RACK
- 45 ORDER MENU DELIVERY CANOPY (REFER TO ARCH. PLAN FOR DETAILS)
- 46 DRIVE-THRU LANE STRIPING
- 47 FACE-TO-FACE DRIVE-THRU CANOPY SYSTEMS (REFER TO ARCH. PLANS FOR DETAILS)
- 48 DETAIL-M GUTTER PAN
- 49 RETAINING WALL
- 50 SITE LIGHTING (REFER TO PHOTOMETRIC PLAN)
- 51 ROLL CURB AND GUTTER (REFER TO TOWN OF PLAINFIELD DETAIL SHEET 03)

**SITE DATA TABLE:**

SITE AREA: 1.30 ACRES (56,844 SQ.FT.) NET AND GROSS			
ZONING: GC (GENERAL COMMERCIAL)			
PROPOSED USE: RESTAURANT (5,028 S.F)			
<b>BUILDING INFORMATION:</b>			
MAXIMUM ALLOWABLE BUILDING HEIGHT = 75 FEET			
PROPOSED BUILDING HEIGHT = 21 FEET			
BUILDING FOOTPRINT AREA = 5,028 SQ.FT.			
BUILDING LOT COVERAGE = 5,028/ 56,844 = 8.8%			
<b>BUILDING SETBACK REQUIREMENTS:</b>			
FRONT (EAST/WEST):	REQUIRED: 30'/30'	PROPOSED: 132.59'/53.90'	
SIDE (NORTH):	10'	54.07'	
REAR (SOUTH):	10'	45.87'	
<b>LANDSCAPE SETBACK REQUIREMENTS:</b>			
FRONT (EAST/WEST):	REQUIRED: 10'/20'	PROPOSED: 10.47'/20'	
SIDE (NORTH):	10'	10'	
REAR (SOUTH):	10'	10'	
<b>PARKING CALCULATIONS:</b>			
RESTAURANT REQUIRED PARKING = 1 SPACE PER 5 SEATS			
PROPOSED SEATS = 89 SEATS			
PARKING REQUIRED = 98/5 = 20 SPACES REQUIRED			
PARKING PROVIDED = 48 SPACES ON-SITE INCLUDING 2 BARRIER FREE SPACES			
14 SPACES ON ADJACENT SITE FOR EMPLOYEE PARKING			
= 62 TOTAL SPACES PROVIDED			
STACKING SPACES REQUIRED = 5 SPACES PRIOR TO ORDERING STATION AND AT LEAST ONE AFTER EXITING LAST PICK UP WINDOW			
STACKING SPACES PROVIDED = 43 (9'x20') STACKING SPACES PROVIDED			



**PAVING PLAN LEGEND:**

CONCRETE PAVEMENT (DETAIL #12, C-400)	
ASPHALT PAVEMENT (DETAIL #3, C-402)	
CONCRETE CURB AND GUTTER (DETAIL #11, C-400)	
REVERSE GUTTER PAN (DETAIL #11, C-400)	
PARKING SPACE COUNTS	

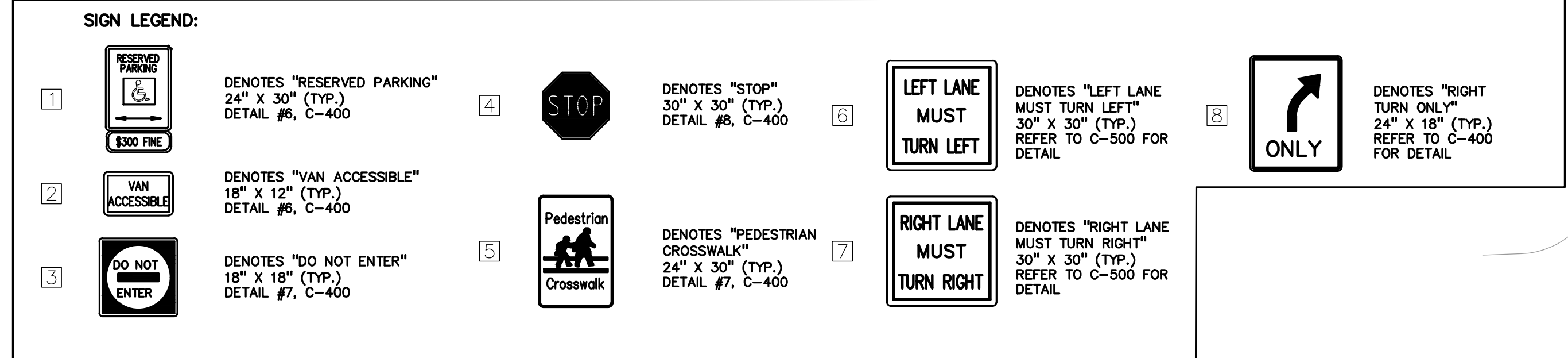
**SIDEWALK RAMP LEGEND:**

SIDEWALK RAMP 'TYPE R'	
SIDEWALK RAMP 'TYPE RF'	
SIDEWALK RAMP 'TYPE D'	
SIDEWALK RAMP 'TYPE P'	
CURB CUT ONLY (NO RAMP)	

**GENERAL NOTES:**

THESE NOTES APPLY TO ALL CONSTRUCTION ACTIVITIES ON THIS PROJECT.

- ALL DIMENSIONS SHOWN ARE TO BACK OF CURB, FACE OF SIDEWALK, OUTSIDE FACE OF BUILDING, PROPERTY LINE, CENTER OF MANHOLE/CATCH BASIN OR CENTERLINE OF PIPE UNLESS OTHERWISE NOTED.
- REFER TO SHEETS C-400 THROUGH C-403 FOR ON-SITE PAVING DETAILS.



**Chick-fil-A**  
 5200 Buffington Road  
 Atlanta, Georgia 30349-2998

**PEA GROUP**  
 t: 844.813.2949  
 www.peagroup.com

DAVID HUNTER REGISTERED PROFESSIONAL ENGINEER  
 No. 10803333  
 STATE OF INDIANA

SCALE: 1" = 20'  
 NORTH

**CHICK-FIL-A**  
 PLAINFIELD  
 6102 CAMBRIDGE WAY  
 PLAINFIELD, IN 46168

**FSR#05219**  
 BUILDING TYPE / SIZE: P14-SE-LRG  
 RELEASE: AUGUST 2022

**NOVATION SCHEDULE**

NO.	DATE	DESCRIPTION
1	7/26/2023	TRAFFIC UPDATES

CONSULTANT PROJECT # 2022-1054  
 PRINTED FOR SPA  
 DATE APRIL 14, 2023  
 DRAWN BY LGD

Information contained on this drawing and in all digital files produced for above named project may not be reproduced in any manner without express written or verbal consent from authorized project representatives.

SHEET PRELIMINARY SITE PLAN  
 SHEET NUMBER C-200

File Path  
 3/15/2021  
 S:\PROJECTS\2022\2022-1054\_CFA\_PLAINFIELD\_05219\DWG\SITE\_PLAN\03 - C-200-SITE-221054.dwg