



CSO
 8831 Keystone Crossing, Indianapolis, IN 46240
 317.246.7800 | CSOinc.net
 © 2011 CSO Architects, Inc. All Rights Reserved.

PROJECT:
 PLAINFIELD COMMUNITY
 SCHOOL CORPORATION
 PLAINFIELD HIGH SCHOOL
 INNOVATION RENOVATIONS
 1 Red Pride Dr., Plainfield, IN 46168

SCOPE DRAWINGS:
 These drawings indicate the general scope of the project in terms of architectural design concepts, the arrangement of structural, mechanical and electrical systems.
 The drawings do not necessarily indicate or describe all work required for the performance and completion of the requirements of the Contract.
 On the basis of the general scope indicated on these drawings, the contractor shall furnish all items required for the proper execution and completion of the work.

REVISIONS:

ISSUE DATE	DRAWN BY	CHECKED BY
04 / 07 / 2023	XXX	XXX

DRAWING TITLE:
 OVERALL FIRST FLOOR PLAN

CERTIFIED BY:
 75%
 CONSTRUCTION DOCUMENTS

DRAWING NUMBER:
 A101

PROJECT NUMBER:
 2021114

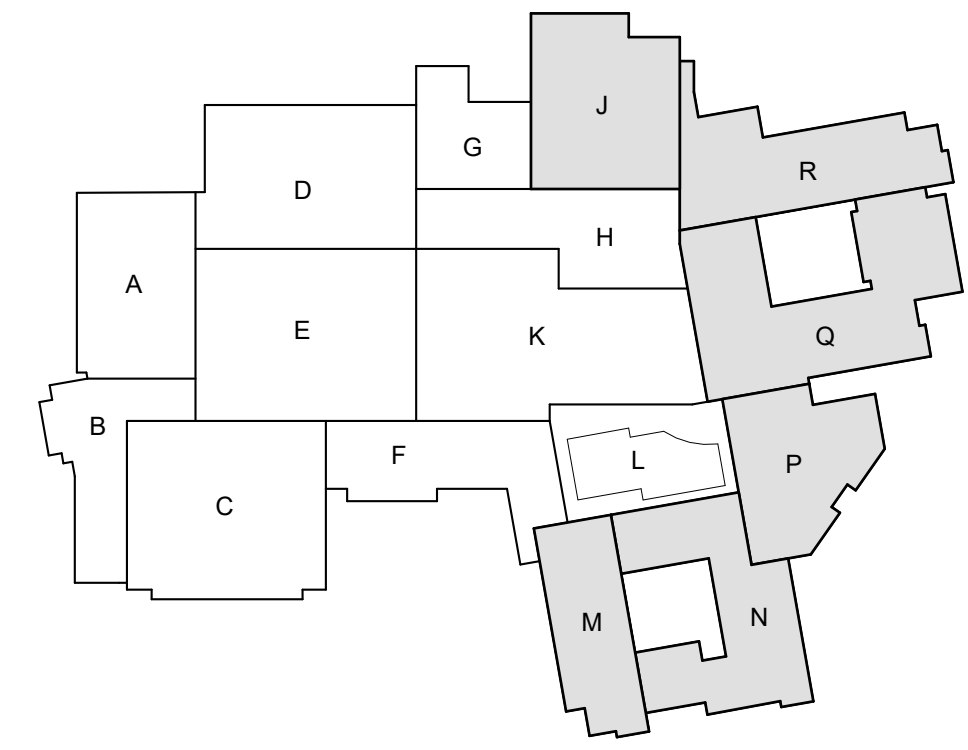
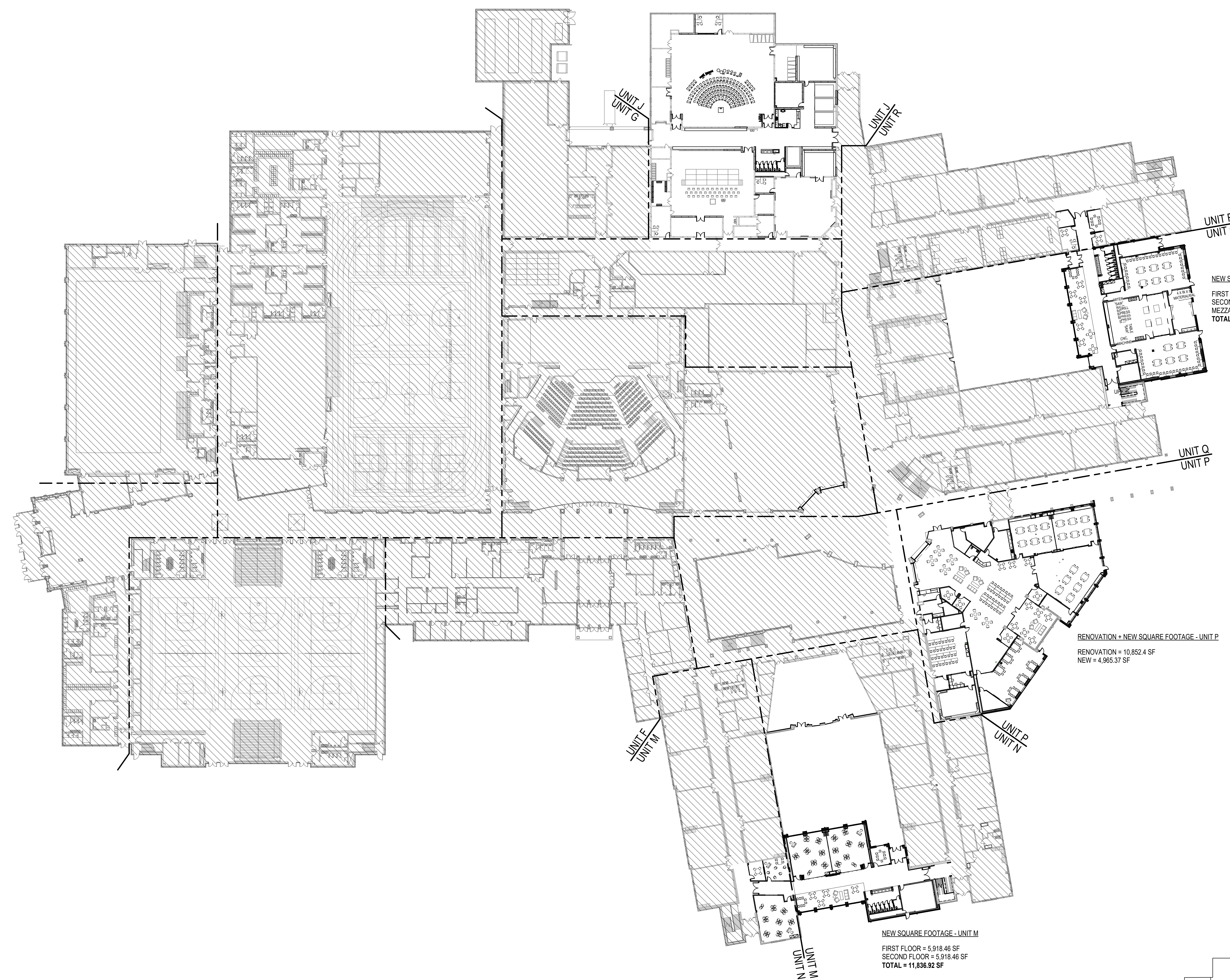
RENOVATION SQUARE FOOTAGE - UNIT J
 RENOVATION = 22,857.14 SF

NEW SQUARE FOOTAGE - UNIT Q
 FIRST FLOOR = 9,370.20 SF
 SECOND FLOOR = 9,508.08 SF
 MEZZANINE = 1,646.64
 TOTAL = 20,524.92

RENOVATION + NEW SQUARE FOOTAGE - UNIT P
 RENOVATION = 10,852.4 SF
 NEW = 4,965.37 SF

NEW SQUARE FOOTAGE - UNIT M
 FIRST FLOOR = 5,918.46 SF
 SECOND FLOOR = 5,918.46 SF
 TOTAL = 11,836.92 SF

NEW SQUARE FOOTAGE
 UNIT M - 11,836.92 SF
 UNIT P - 4,965.37 SF
 UNIT Q - 20,524.92 SF
 TOTAL = 37,327.21 SF



1 OVERALL FIRST FLOOR PLAN
 A101 SCALE: 1/32" = 1'-0"
 NORTH TRUE NORTH PLAN



CSO
 8831 Keystone Crossing, Indianapolis, IN 46240
 317.284.7800 | CSOinc.net
 © 2018 CSO Architects, Inc. All Rights Reserved

PROJECT:
 PLAINFIELD COMMUNITY
 SCHOOL CORPORATION
 PLAINFIELD HIGH SCHOOL
 INNOVATION RENOVATIONS
 1 Red Pride Dr., Plainfield, IN 46168

SCOPE DRAWINGS:
 These drawings indicate the general scope of the project in terms of architectural design concept, the placement of structural, mechanical and electrical systems.
 The drawings do not necessarily indicate or describe all work required for the performance and completion of the requirements of the Contract.
 On the basis of the general scope indicated or described, the trade contractors shall furnish all items required for the proper installation and completion of the work.

REVISIONS:

NO.	DATE	DESCRIPTION

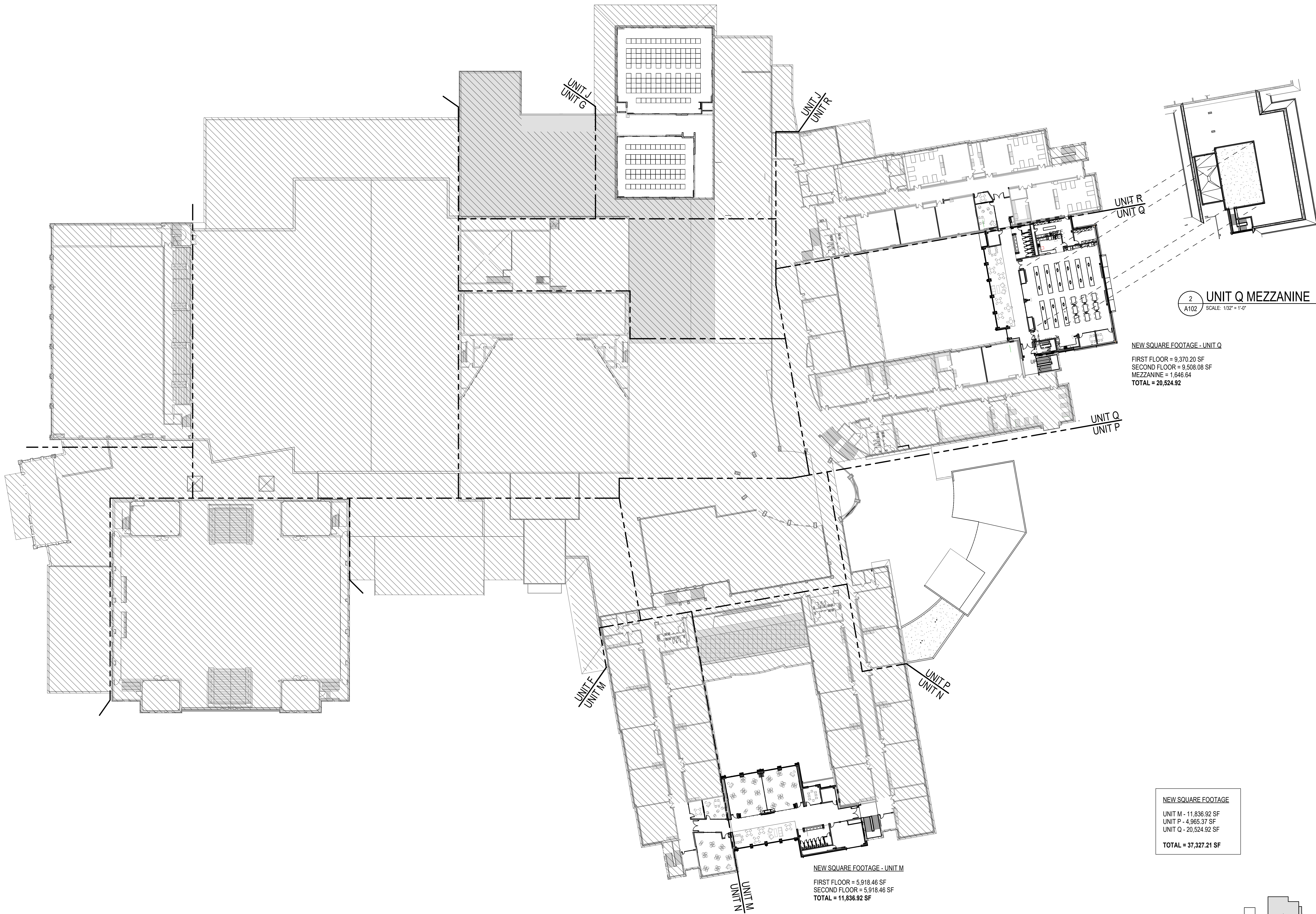
ISSUE DATE	DRAWN BY	CHECKED BY
04 / 07 / 2023	XXX	XXX

DRAWING TITLE:
**OVERALL
 SECOND FLOOR
 PLAN**

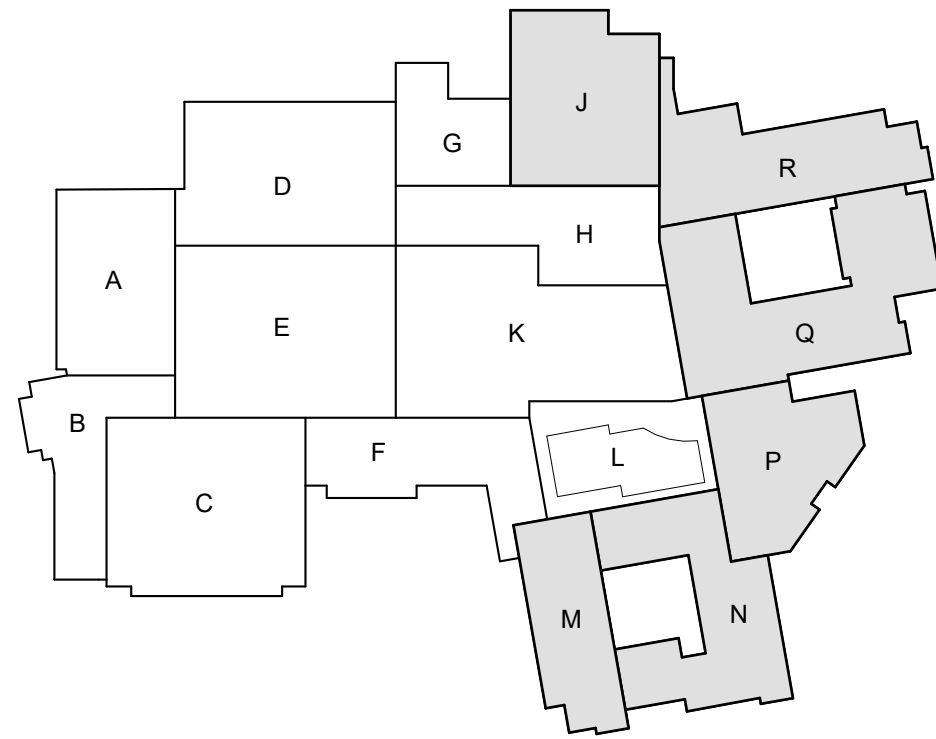
CERTIFIED BY:
**75%
 CONSTRUCTION
 DOCUMENTS**

DRAWING NUMBER:
A102

PROJECT NUMBER:
 2021114

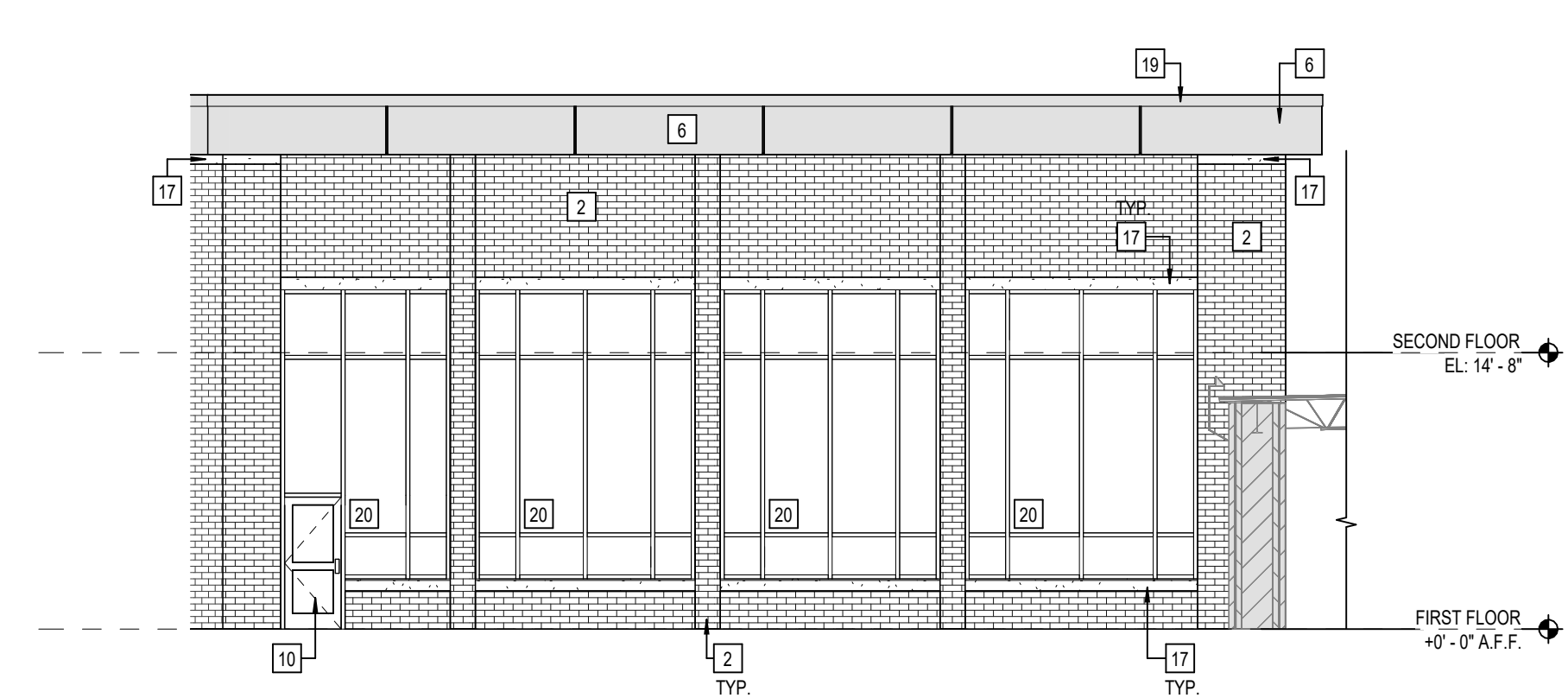
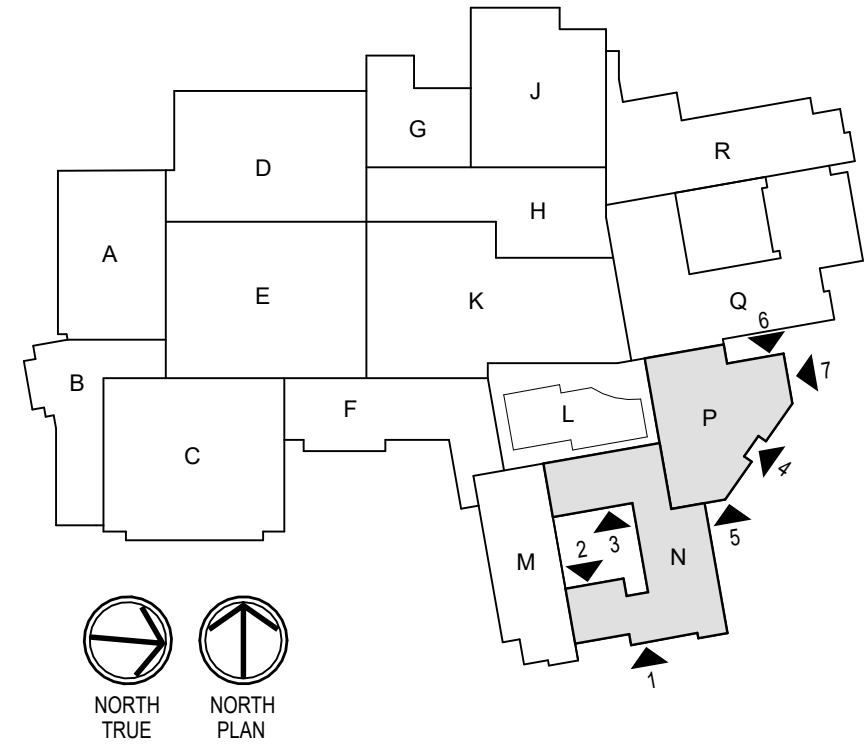


1 OVERALL SECOND FLOOR PLAN
 SCALE: 1/32" = 1'-0"



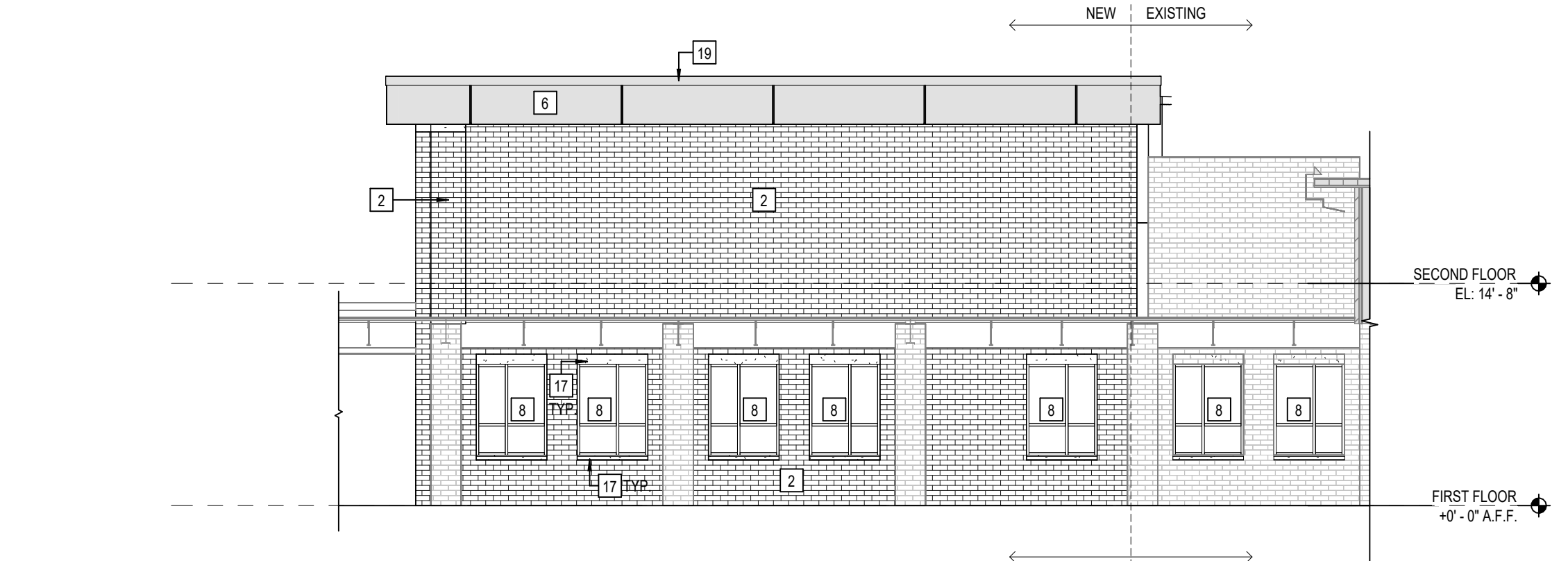
ELEVATION NOTES

- 1 ASPHALT SHINGLE ROOFING
- 2 FIELD BRICK TYPE 1 - UTILITY 1/3 RUNNING BOND - TO MATCH EXISTING (04 20 00)
- 3 FIELD BRICK TYPE 2 - UTILITY 1/3 RUNNING BOND - TO MATCH EXISTING (04 20 00)
- 4 FIELD BRICK TYPE 3 - UTILITY 1/3 RUNNING BOND - TO MATCH EXISTING (04 20 00)
- 5 FIXED COVER
- 6 ALUMINUM COMPOSITE METAL PANEL SYSTEM (07 42 43)
- 7 CONCEALED FASTENER FORMED METAL WALL PANEL - VERTICAL (07 42 13)
- 8 2 X 4 1/2" ALUMINUM STOREFRONT ASSEMBLY W/ 1" INSULATED GLAZING (08 41 13)
- 9 1" INSULATED GLAZING - SPANDREL PANEL - TYPICAL (08 80 00)
- 10 WIDE STYLE ALUMINUM ENTRY DOOR (08 41 13)
- 11 OVERHEAD COILING DOOR - SEE SCHEDULE (08 33 23)
- 12 HOLLOW METAL DOOR AND FRAME - SEE SCHEDULE (08 11 13)
- 13 2" PRECOMPRESSED SILICONE FACED EXTERIOR EXPANSION JOINT (07 95 00)
- 14 MANUFACTURED ALUMINUM GUTTER - TO MATCH EXISTING PROFILE (XX XX XX)
- 15 MANUFACTURED ALUMINUM DOWNSPOUT
- 16 ALUMINUM FASCIA CLADDING - COLOR TO MATCH EXISTING (07 XX XX)
- 17 DIMENSIONED LIMESTONE TRIM SILL (04 XX XX)
- 18 PREFINISHED METAL COPING SYSTEM (07 71 00)
- 19 PRE-FABRICATED METAL DRIP EDGE (07 71 00)
- 20 2 1/2" X 1 1/4" CURTAINWALL ASSEMBLY W/ 1" INSULATED GLAZING (08 41 13)
- 21 WALL SUPPORTED ALUMINUM CANOPY SYSTEM
- 22 ALUMINUM COMPOSITE METAL PANEL SYSTEM COLUMN WRAP (07 42 43)



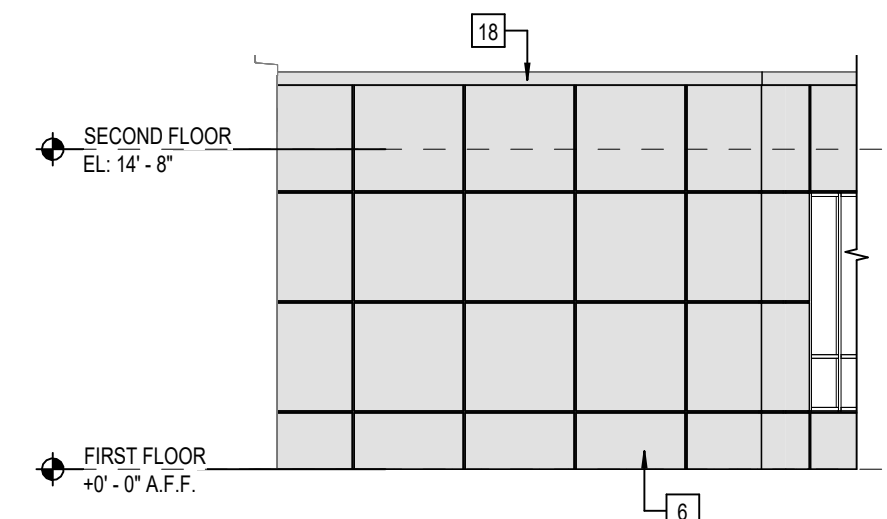
7 EXTERIOR ELEVATION - UNIT P
SCALE: 1/8" = 1'-0"

TOTAL AREA (A)	AREA EXCLUDING WINDOWS, DOORS, ROOFING & SPITTS (B)	AREA OF EXTERIOR BUILDING MATERIALS OR COLORS USED (C)	PERCENTAGE OF AREA OF EACH QUALIFYING EXTERIOR MATERIAL (C/B)
1905.76 SF	915.34 SF	BRICK TYPE 1 875.55 SF BRICK TYPE 2 185.55 SF METAL PANEL 34.24 SF OTHER 0 SF	75% 20% 2% 3%



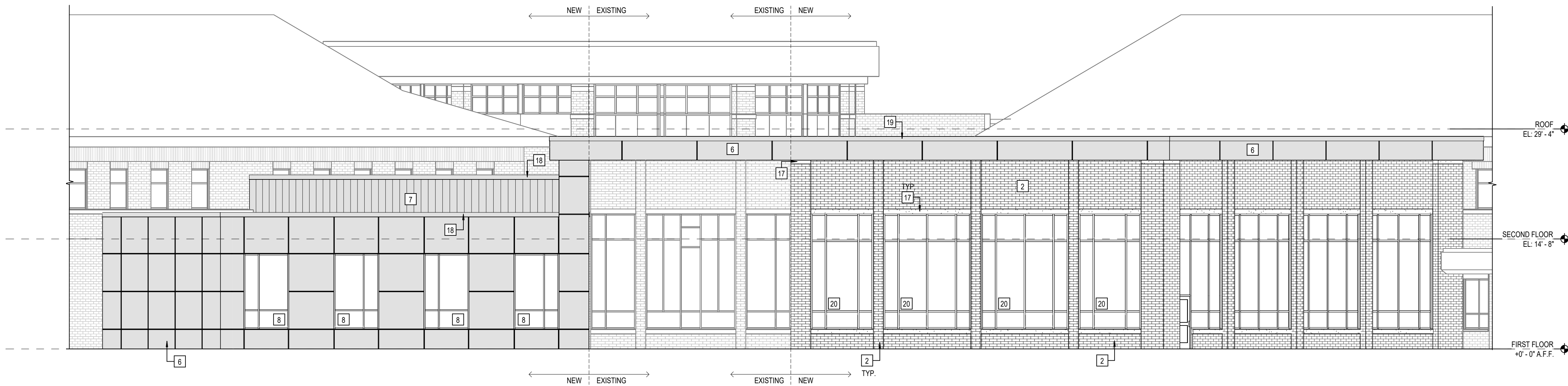
6 EXTERIOR ELEVATION - UNIT P
SCALE: 1/8" = 1'-0"

TOTAL AREA (A)	AREA EXCLUDING WINDOWS, DOORS, ROOFING & SPITTS (B)	AREA OF EXTERIOR BUILDING MATERIALS OR COLORS USED (C)	PERCENTAGE OF AREA OF EACH QUALIFYING EXTERIOR MATERIAL (C/B)
1268.22 SF	628.07 SF	BRICK TYPE 1 1045.55 SF BRICK TYPE 2 185.55 SF METAL PANEL 37.12 SF OTHER 0 SF	83% 15% 2% 0%



5 EXTERIOR ELEVATION - UNIT P
SCALE: 1/8" = 1'-0"

TOTAL AREA (A)	AREA EXCLUDING WINDOWS, DOORS, ROOFING & SPITTS (B)	AREA OF EXTERIOR BUILDING MATERIALS OR COLORS USED (C)	PERCENTAGE OF AREA OF EACH QUALIFYING EXTERIOR MATERIAL (C/B)
424.24 SF	424.24 SF	BRICK TYPE 1 1 SF METAL PANEL 423.24 SF OTHER 0 SF	0% 100% 0%

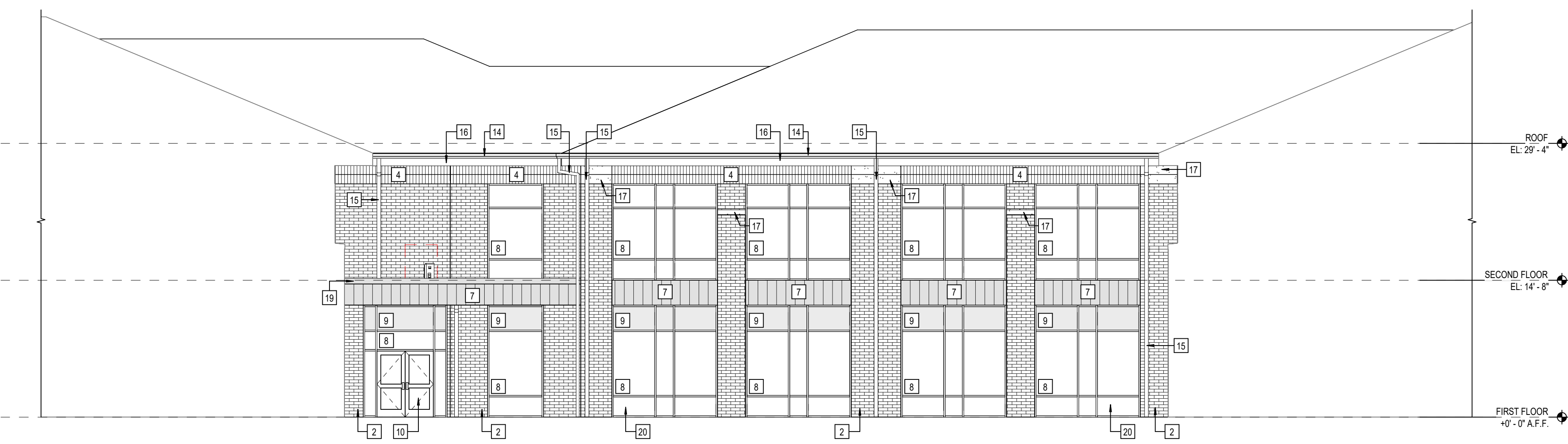


4 EXTERIOR ELEVATION - UNIT P
SCALE: 1/8" = 1'-0"

TOTAL AREA (A)	AREA EXCLUDING WINDOWS, DOORS, ROOFING & SPITTS (B)	AREA OF EXTERIOR BUILDING MATERIALS OR COLORS USED (C)	PERCENTAGE OF AREA OF EACH QUALIFYING EXTERIOR MATERIAL (C/B)
1924.44 SF	1127.71 SF	BRICK TYPE 1 1497.55 SF BRICK TYPE 2 185.55 SF METAL PANEL 120.61 SF OTHER 0 SF	78% 10% 8% 4%

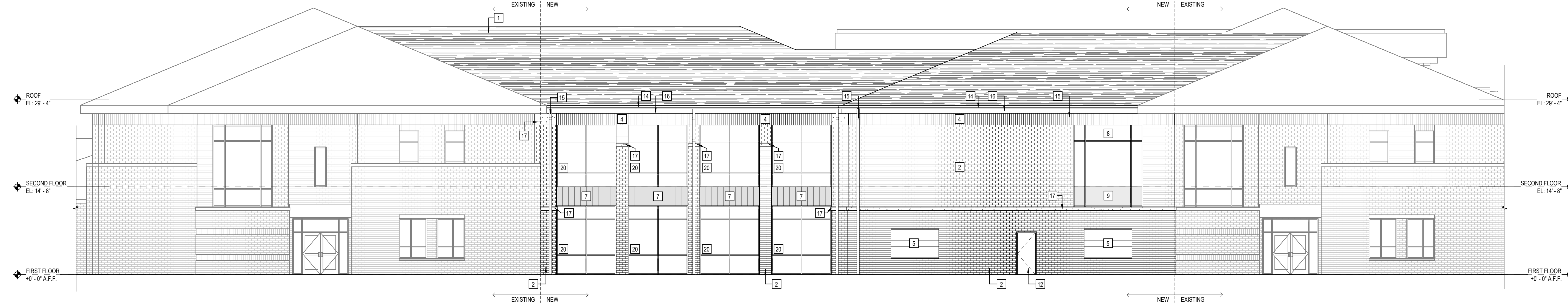


3 EXTERIOR ELEVATION - UNIT N - COURTYARD
SCALE: 1/8" = 1'-0"



2 EXTERIOR ELEVATION - UNIT N - COURTYARD
SCALE: 1/8" = 1'-0"

TOTAL AREA (A)	AREA EXCLUDING WINDOWS, DOORS, ROOFING & SPITTS (B)	AREA OF EXTERIOR BUILDING MATERIALS OR COLORS USED (C)	PERCENTAGE OF AREA OF EACH QUALIFYING EXTERIOR MATERIAL (C/B)
2604.44 SF	1727.71 SF	BRICK TYPE 1 1497.55 SF BRICK TYPE 2 185.55 SF METAL PANEL 120.61 SF OTHER 0 SF	73% 11% 7% 9%



1 EXTERIOR ELEVATION - UNIT N
SCALE: 1/8" = 1'-0"

TOTAL AREA (A)	AREA EXCLUDING WINDOWS, DOORS, ROOFING & SPITTS (B)	AREA OF EXTERIOR BUILDING MATERIALS OR COLORS USED (C)	PERCENTAGE OF AREA OF EACH QUALIFYING EXTERIOR MATERIAL (C/B)
3043.33 SF	1847.33 SF	BRICK TYPE 1 1192.55 SF BRICK TYPE 2 185.55 SF METAL PANEL 150.23 SF OTHER 0 SF	100% 7% 8% 85%



CSO
8831 Keystone Crossing, Indianapolis, IN 46240
317.246.2800 | info@csocorp.com
© 2013 CSO Architects, Inc. All Rights Reserved.

**PLAINFIELD COMMUNITY SCHOOL CORPORATION
PLAINFIELD HIGH SCHOOL
INNOVATION RENOVATIONS**
1 Red Pride Dr., Plainfield, IN 46168

SCOPE DRAWINGS:
These drawings shall be the general intent of the project as shown on architectural drawings. The contractor shall be responsible for the proper interpretation and execution of the drawings. The contractor shall be responsible for the proper interpretation and execution of the drawings. The contractor shall be responsible for the proper interpretation and execution of the drawings.

REVISIONS:

ISSUE DATE	DRAWN BY	CHECKED BY
04/07/2023	Author	Checker

DRAWING TITLE:
ENLARGED BUILDING ELEVATIONS

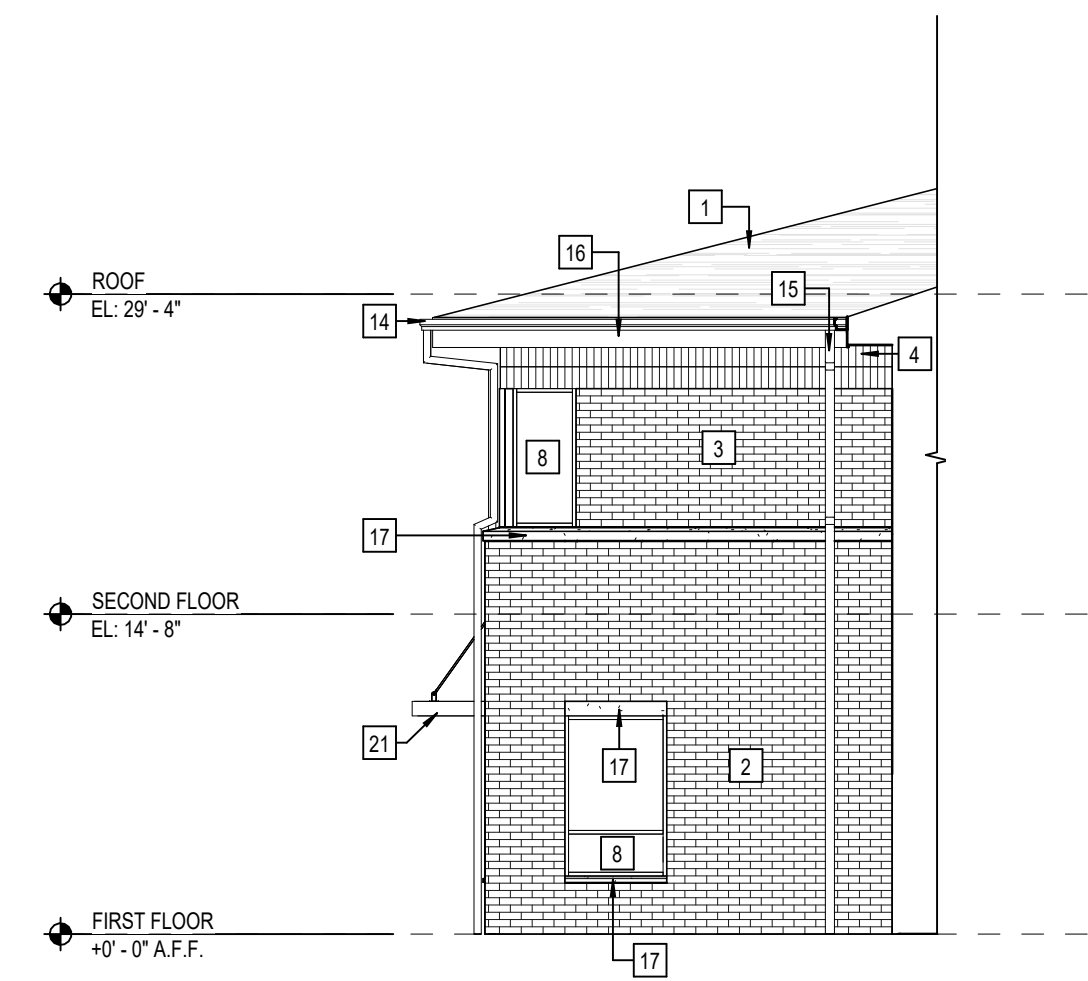
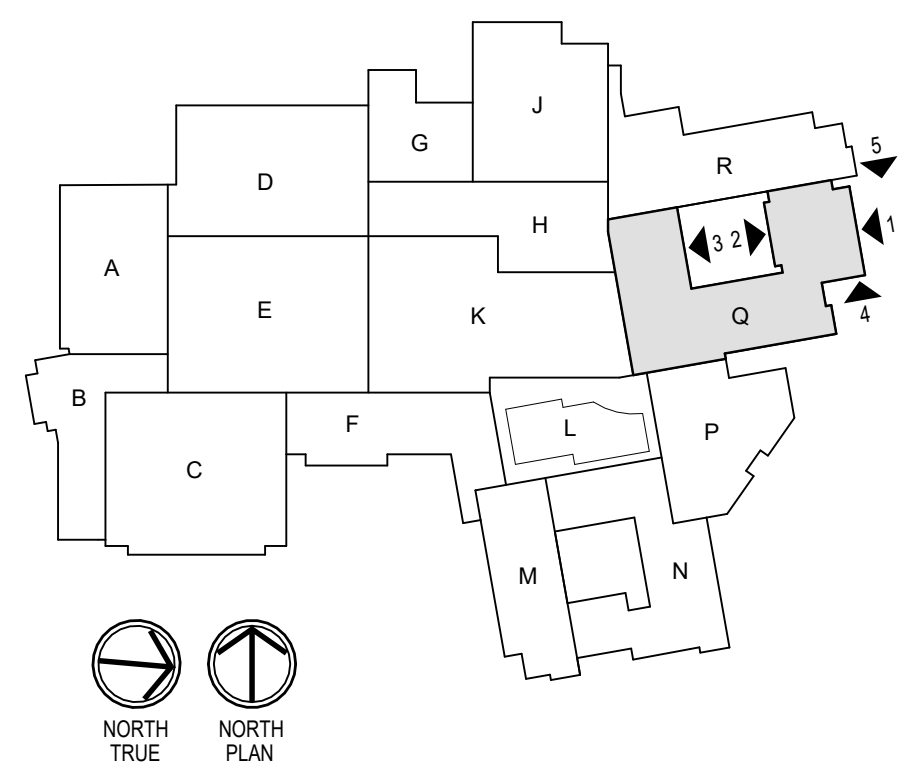
CERTIFIED BY:
75%
CONSTRUCTION DOCUMENTS

DRAWING NUMBER:
A300

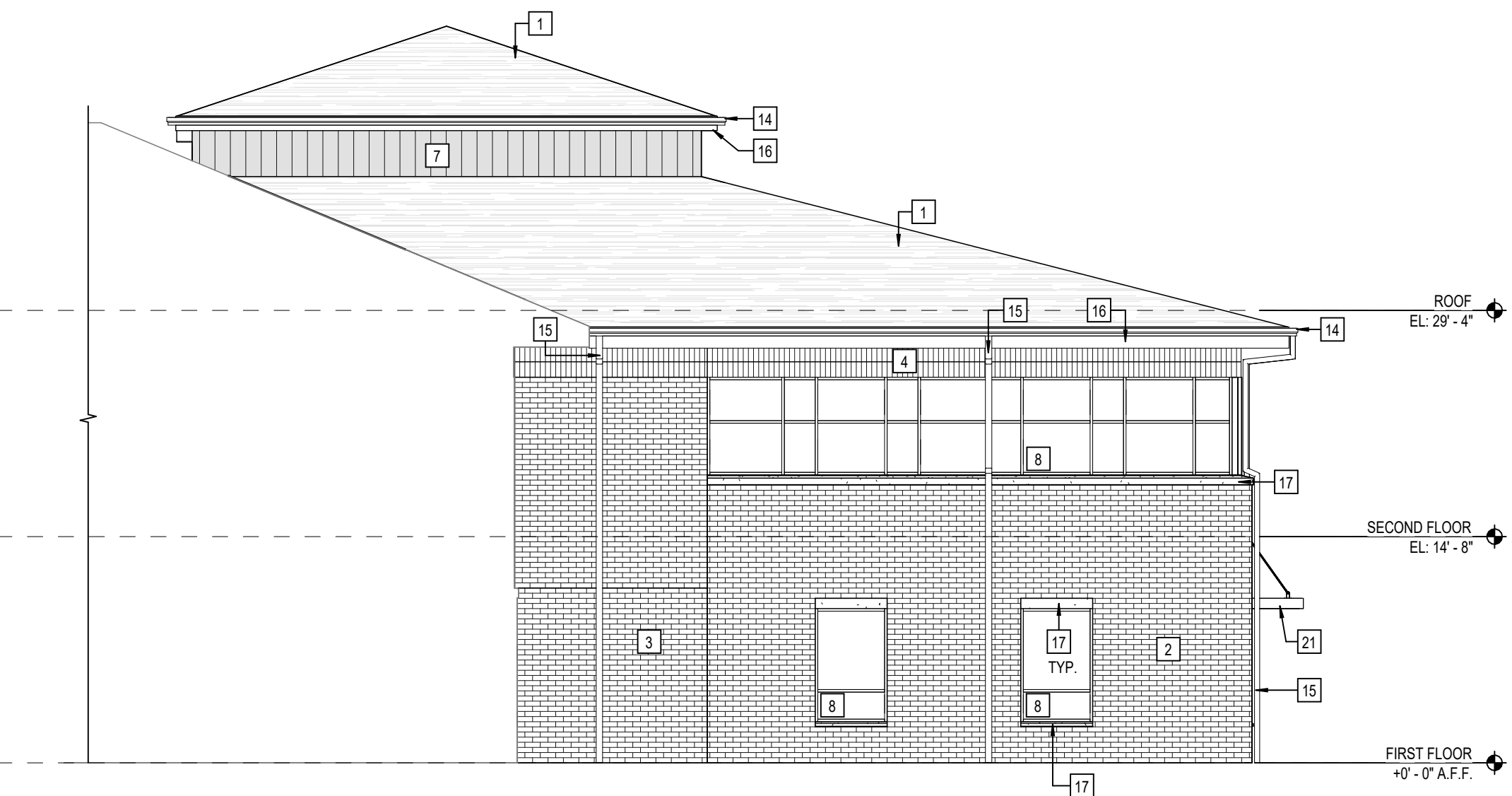
PROJECT NUMBER:
2021114

ELEVATION NOTES

- 1 ASPHALT SHINGLE ROOFING
- 2 FIELD BRICK TYPE 1 - UTILITY 1/3 RUNNING BOND - TO MATCH EXISTING (04 20 00)
- 3 FIELD BRICK TYPE 2 - UTILITY 1/3 RUNNING BOND - TO MATCH EXISTING (04 20 00)
- 4 FIELD BRICK TYPE 3 - UTILITY SOLDIER COURSE - TO MATCH EXISTING (04 20 00)
- 5 FIXED LOUVER
- 6 ALUMINUM COMPOSITE METAL PANEL SYSTEM (07 42 43)
- 7 CONCEALED FASTENER FORMED METAL WALL PANEL - VERTICAL (07 42 13)
- 8 2 X 4 1/2" ALUMINUM STOREFRONT ASSEMBLY W/ 1" INSULATED GLAZING (08 41 13)
- 9 1" INSULATED GLAZING - SPANDREL PANEL - TYPICAL (08 80 00)
- 10 WIDE STYLE ALUMINUM ENTRY DOOR (08 41 13)
- 11 OVERHEAD COILING DOOR - SEE SCHEDULE (08 33 23)
- 12 HOLLOW METAL DOOR AND FRAME - SEE SCHEDULE (08 11 13)
- 13 2" PRECOMPRESSED SILICONE FACED EXTERIOR EXPANSION JOINT (07 95 00)
- 14 MANUFACTURED ALUMINUM GUTTER - TO MATCH EXISTING PROFILE (0X XX XX)
- 15 MANUFACTURED ALUMINUM DOWNSPOUT
- 16 ALUMINUM FASCIA CLADDING - COLOR TO MATCH EXISTING (07 XX XX)
- 17 DIMENSIONED Limestone TRIM / SILL - (04 XX XX)
- 18 PREFINISHED METAL COPING SYSTEM (07 71 00)
- 19 PREFABRICATED METAL DRIP EDGE (07 71 00)
- 20 2 1/2" X 8 1/4" CURTAINWALL ASSEMBLY W/ 1" INSULATED GLAZING (08 41 13)
- 21 WALL SUPPORTED ALUMINUM CANOPY SYSTEM
- 22 ALUMINUM COMPOSITE METAL PANEL SYSTEM COLUMN WRAP (07 42 43)



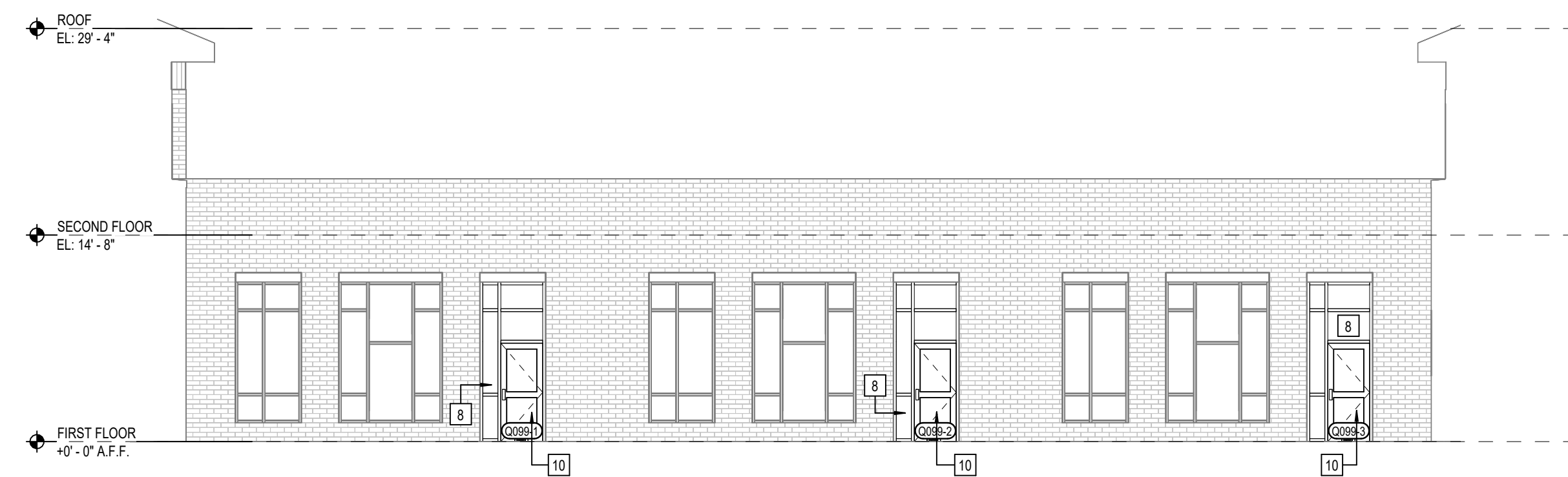
5 EXTERIOR ELEVATION - UNIT Q
A301 SCALE: 1/8" = 1'-0"



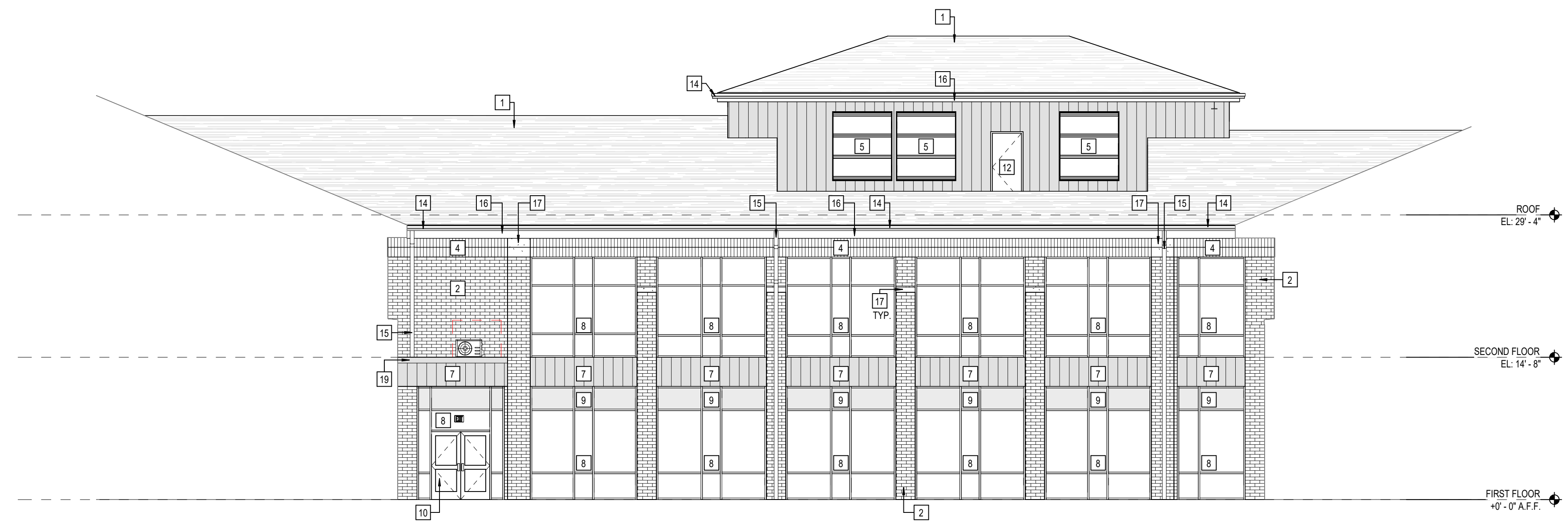
4 EXTERIOR ELEVATION - UNIT Q
A301 SCALE: 1/8" = 1'-0"

TOTAL AREA (A)	AREA EXCLUDING WINDOWS, DOORS, ROOFING & SLOTTED (B)	AREA OF EXTERIOR BUILDING MATERIALS OR COLORS (C)	PERCENTAGE OF AREA OF EACH QUALIFYING EXTERIOR MATERIAL (C/B)
522.87 SF	488.21 SF	BRICK TYPE 1 297.84 SF	61%
		BRICK TYPE 2 18.18 SF	4%
		BRICK TYPE 3 35.82 SF	8%
		METAL PANEL 1.51 SF	0%
		OTHER 44.88 SF	9%

TOTAL AREA (A)	AREA EXCLUDING WINDOWS, DOORS, ROOFING & SLOTTED (B)	AREA OF EXTERIOR BUILDING MATERIALS OR COLORS (C)	PERCENTAGE OF AREA OF EACH QUALIFYING EXTERIOR MATERIAL (C/B)
1472.65 SF	1184.60 SF	BRICK TYPE 1 599.82 SF	47%
		BRICK TYPE 2 1256.98 SF	99%
		BRICK TYPE 3 86.88 SF	6%
		METAL PANEL 25.38 SF	2%
		OTHER 126.58 SF	17%

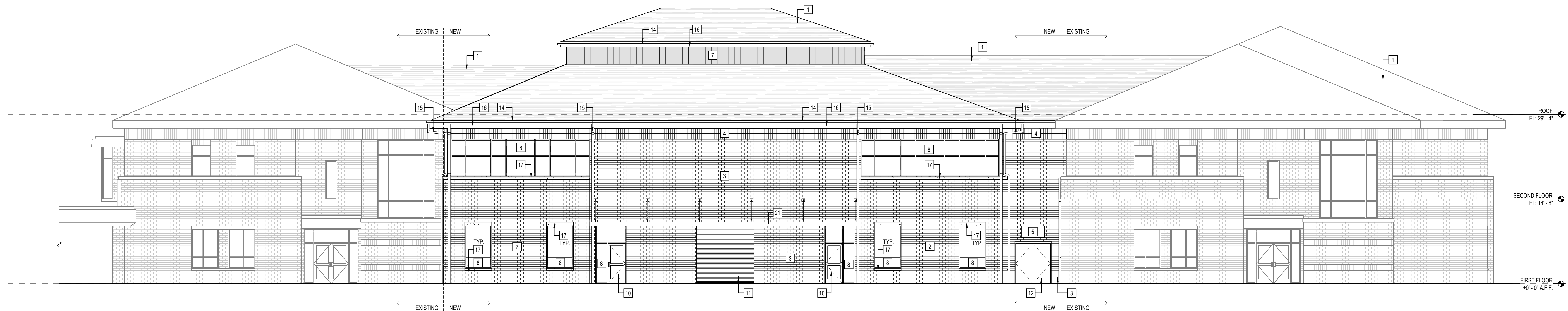


3 EXTERIOR ELEVATION - UNIT Q - COURTYARD
A301 SCALE: 1/8" = 1'-0"



TOTAL AREA (A)	AREA EXCLUDING WINDOWS, DOORS, ROOFING & SLOTTED (B)	AREA OF EXTERIOR BUILDING MATERIALS OR COLORS (C)	PERCENTAGE OF AREA OF EACH QUALIFYING EXTERIOR MATERIAL (C/B)
2087.84 SF	1479.57	BRICK TYPE 1 1286.70 SF	87%
		BRICK TYPE 3 113.33 SF	8%
		METAL PANEL 473.67 SF	32%
		OTHER 358.89 SF	25%

2 EXTERIOR ELEVATION - UNIT Q - COURTYARD
A301 SCALE: 1/8" = 1'-0"



TOTAL AREA (A)	AREA EXCLUDING WINDOWS, DOORS, ROOFING & SLOTTED (B)	AREA OF EXTERIOR BUILDING MATERIALS OR COLORS (C)	PERCENTAGE OF AREA OF EACH QUALIFYING EXTERIOR MATERIAL (C/B)
3223.19 SF	2534.82 SF	BRICK TYPE 1 1311.32 SF	52%
		BRICK TYPE 2 1714.88 SF	68%
		BRICK TYPE 3 252.29 SF	8%
		METAL PANEL 125.95 SF	4%
		OTHER 234.63 SF	9%

1 EXTERIOR ELEVATION - UNIT Q
A301 SCALE: 1/8" = 1'-0"



CSO
8831 Keystone Crossing, Indianapolis, IN 46240
317.246.2800 | info@csocorp.com
© 2015 CSO Architects, Inc. All Rights Reserved.

PROJECT:
**PLAINFIELD COMMUNITY SCHOOL CORPORATION
PLAINFIELD HIGH SCHOOL
INNOVATION RENOVATIONS**
1 Red Pride Dr., Plainfield, IN 46168

SCOPE DRAWINGS:
These drawings shall be general in nature and shall not be construed as a contract. The contractor shall be responsible for the coordination of all trades and the completion of the work. The contractor shall be responsible for the coordination of all trades and the completion of the work. The contractor shall be responsible for the coordination of all trades and the completion of the work.

REVISIONS:

NO.	DATE	DESCRIPTION

ISSUE DATE	DRAWN BY	CHECKED BY
04 / 07 / 2023	Author	Checker

DRAWING TITLE:
ENLARGED BUILDING ELEVATIONS

CERTIFIED BY:
75% CONSTRUCTION DOCUMENTS

DRAWING NUMBER
A301

PROJECT NUMBER
2021114