



EXTERIOR FINISHES



ATTACHED CANOPY SCHEDULE

Mark	Description	Count	Overall Width	Overall Depth	Tie Back Mounting (Offset From Top)	Integral Lighting
C1-C	Exterior Canopy	11	6'-4"	1'-0"	0"	No
C4-B	Exterior Canopy	2	9'-4"	4'-0"	2'-4"	Yes
C4-L	Exterior Canopy	1	28'-0"	4'-0"	2'-4"	Yes
C5-A	Exterior Canopy	1	13'-4"	5'-0"	2'-4"	Yes
Grand total		15				



PERSPECTIVE VIEW



PERSPECTIVE VIEW



PERSPECTIVE VIEW



PERSPECTIVE VIEW

PROJECT DATA

Prototype Edition:	SE	Playground	NO
Exterior Finish Type:	TOWER BRICK	Landscaping Type:	STANDARD
Wall Framing Type:	METAL STUD	LEED Rating:	NOT CERTIFIED
Kitchen Type:	CENTERLINE 3.0	Drive Thru Bypass Lane:	YES
Water Filtration Type:	TYPE A	Drive Thru Number of Fulfillment Lanes:	#
Drive-Thru:	YES	Drive Thru Number of Pickup Lanes:	#
Industrialized Construction:	YES	Drive Thru Number of Order Point Pylons:	#
Number of Parking Spaces:	#	Drive Thru Number of Pickup Windows:	#
Number of Accessible Parking Spaces:	#	Drive Thru Door:	YES
Cross Parking:	YES	Square Footage:	4864
Menu Board - Interior:	YES	Seat Count - Interior:	74
Menu Board - Interior - Count:	6	Seat Count - Exterior:	28
Menu Board - Interior - Type:	DIGITAL	Canopy Type - Order Point:	DOUBLE
Menu Board - Walk-up:	N/A	Canopy Type - Meal Delivery:	DOUBLE
Menu Board - Walk-up - Count:	N/A	Number of Registers:	3
Menu Board - Walk-up - Type:	N/A		
Menu Board - Order Point:	YES		
Menu Board - Order Point - Count:	4		
Menu Board - Order Point - Type:	DIGITAL		
Planned Classification:	BASE		

DESIGN APPROVAL

SD	SD	DD	CD
<input type="checkbox"/>	<input type="checkbox"/>	<input type="checkbox"/>	<input type="checkbox"/>
<input type="checkbox"/> NOT APPROVED - REVISE AND RESUBMIT <input type="checkbox"/> APPROVED AS NOTED - REVISE AND RESUBMIT <input type="checkbox"/> APPROVED FOR DESIGN INTENT			

PROJECT NOTES

OVERALL AREA: 1444 SF
AREA EXCLUDING WINDOWS AND DOORS: 386 SF
PRIMARY COLOR: 238 SF
SECONDARY COLOR: 496 SF
OTHER MATERIAL: 557 SF

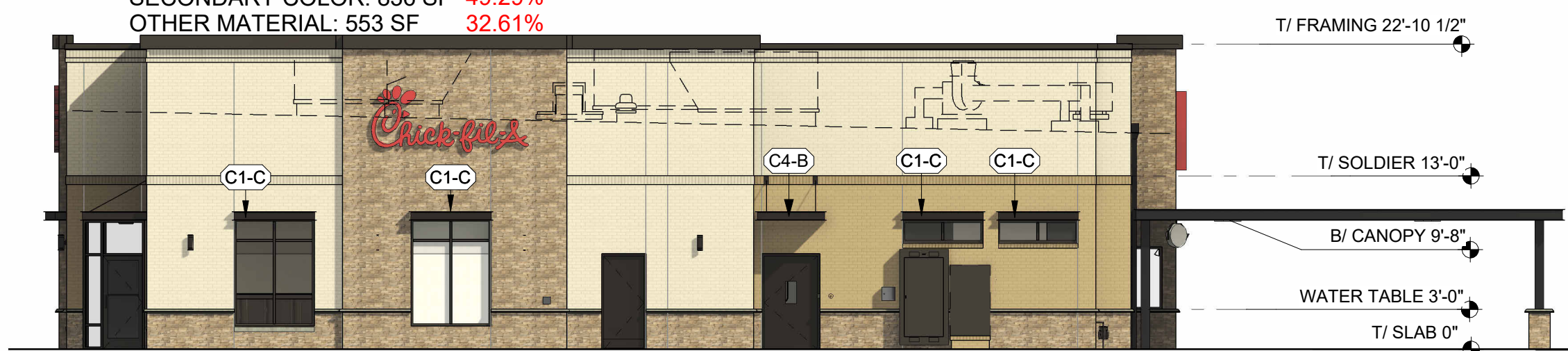


PERSPECTIVE VIEW

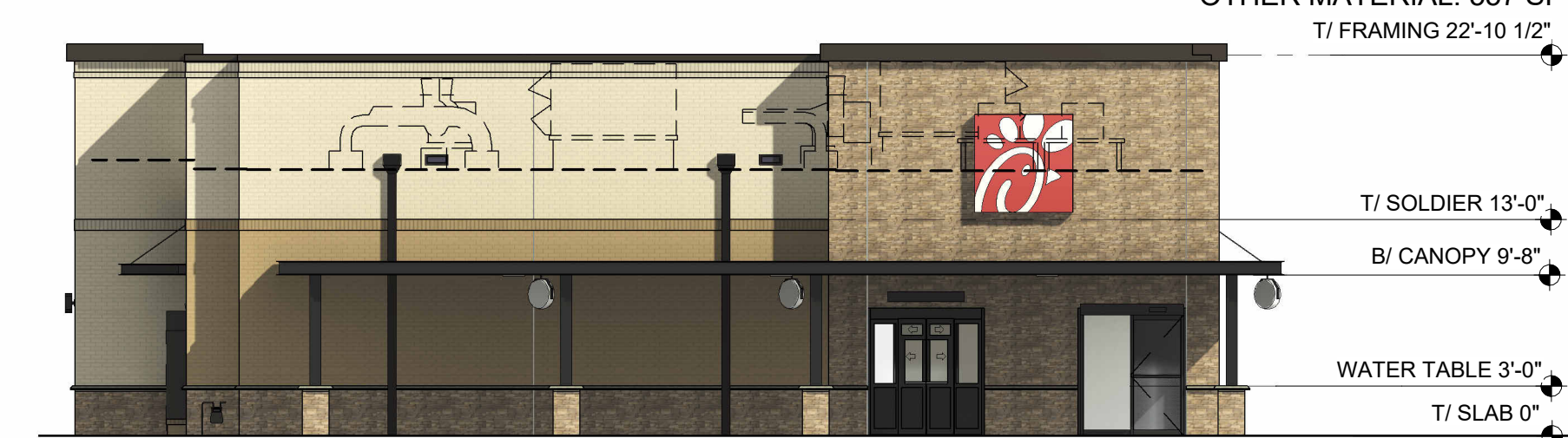


REF. ENCLOSURE FINISHES

OVERALL AREA: 1696 SF
AREA EXCLUDING WINDOWS AND DOORS: 275 SF
PRIMARY COLOR: 275 SF
SECONDARY COLOR: 836 SF
OTHER MATERIAL: 553 SF

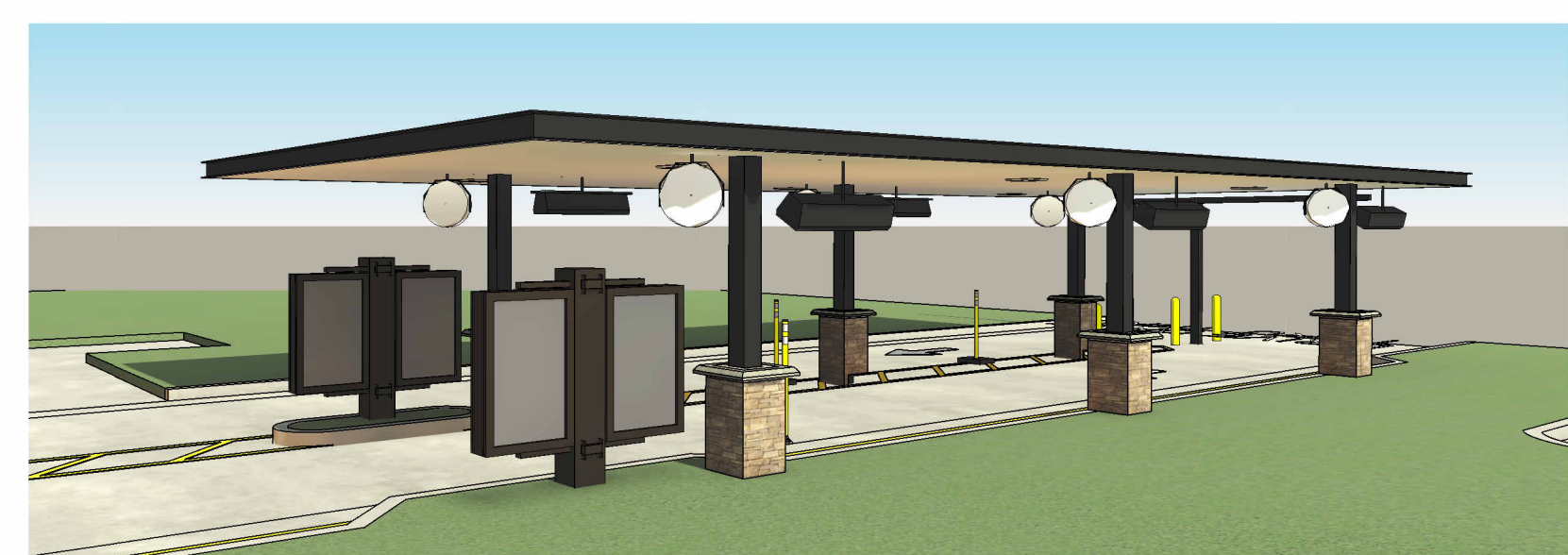


WEST ELEVATION

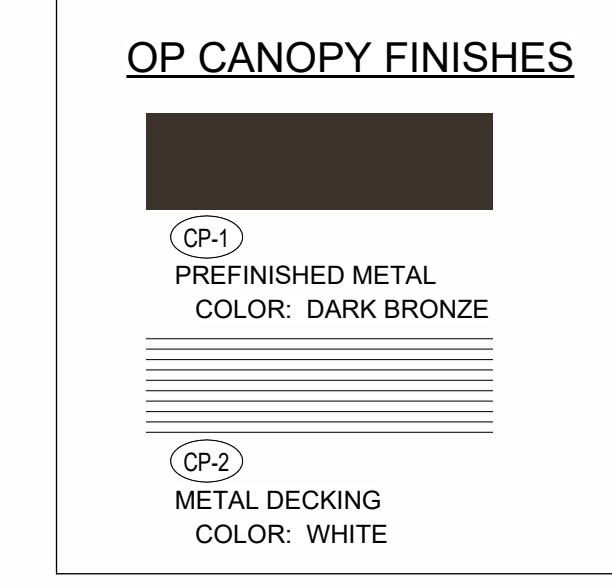


NORTH ELEVATION

OVERALL AREA: 1294 SF
AREA EXCLUDING WINDOWS AND DOORS: 238 SF
PRIMARY COLOR: 238 SF
SECONDARY COLOR: 544 SF
OTHER MATERIAL: 525 SF



PERSPECTIVE VIEW



OP CANOPY FINISHES



EAST ELEVATION



SOUTH ELEVATION

OVERALL AREA: 1664 SF
AREA EXCLUDING WINDOWS AND DOORS: 423 SF
PRIMARY COLOR: 423 SF
SECONDARY COLOR: 451 SF
OTHER MATERIAL: 797 SF

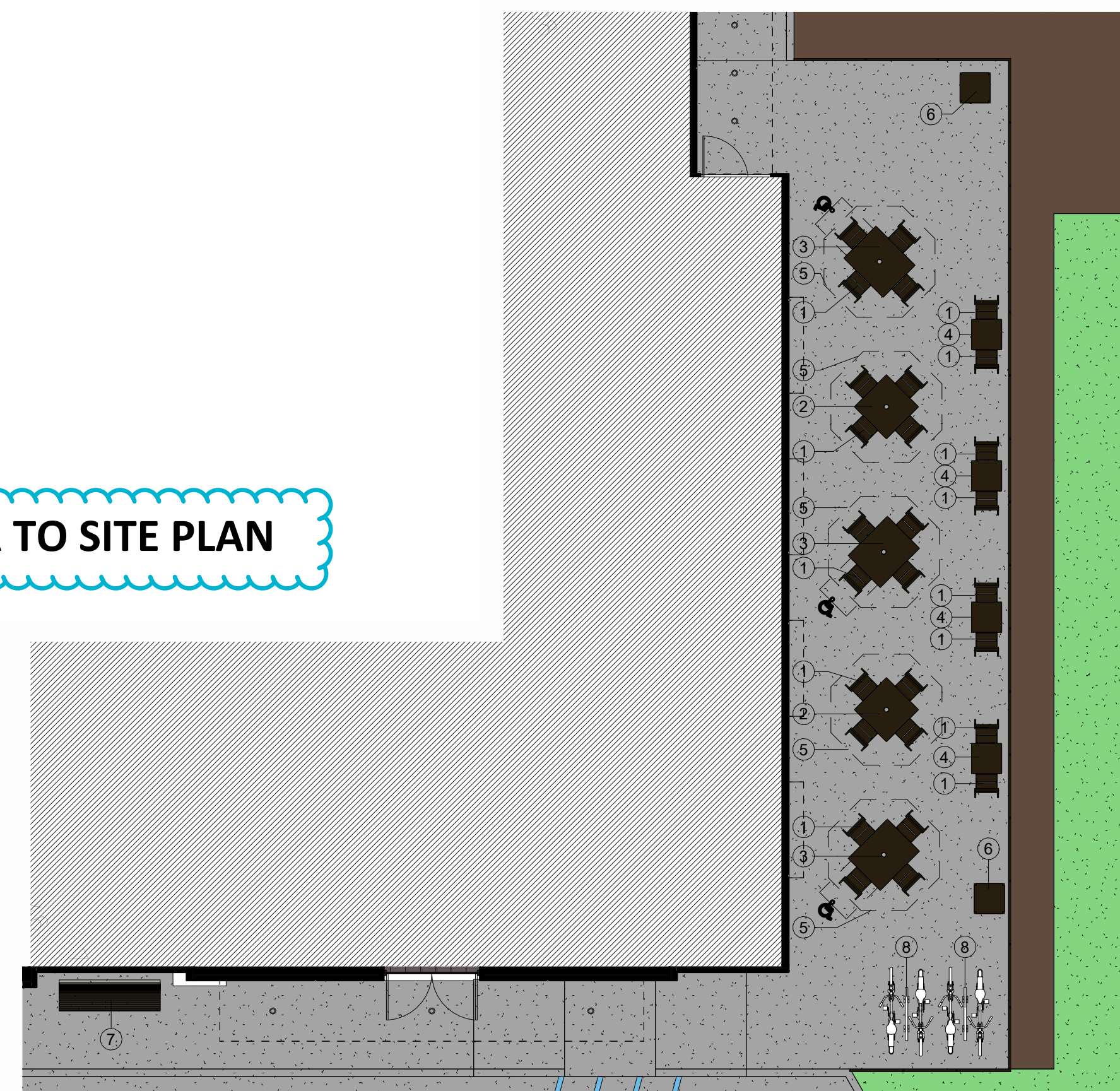


PERSPECTIVE VIEW - PATIO

REFER TO SITE PLAN

PATIO SEATING SCHEDULE

Mark	Type	Count	Manufacturer	Model	Width	Depth	Height	Material	Finish
1	Patio Chair	28	Benchmark Design Group	WENDOVER CHAIR	3'-0"	3'-0"	2'-5 1/4"	Aluminum - Dark Bronze	RAL 49/66220 (C34 Bronze One Coat)
2	Patio Table - 4 Top	2	Benchmark Design Group	TAB3055-3636-AAL-WJ-UH-BDT	3'-0"	3'-0"	2'-5 1/4"	Aluminum - Dark Bronze	RAL 49/66220 (C34 Bronze One Coat)
3	Patio Table - 4 Top - ADA	3	Benchmark Design Group	TAB3055-3644-AAL-WJ-UH-BDT	3'-8"	3'-0"	2'-5 1/4"	Aluminum - Dark Bronze	RAL 49/66220 (C34 Bronze One Coat)
4	Patio Table - 2 Top	4	Benchmark Design Group	TAB3055-2424-AAL-WJ-BDT	2'-0"	2'-0"	2'-5 1/4"	Aluminum - Dark Bronze	RAL 49/66220 (C34 Bronze One Coat)
5	Patio Umbrella	5	Tuuci	OCEAN MASTER PARASOL	2'-0"	2'-0"	3'-11"	Dark Bronze	RAL 49/66220 (C34 Bronze One Coat)
6	Trash Receptacle	2	Benchmark Design Group	CFA-AL-2444	2'-0"	2'-0"	3'-0"	Aluminum - Dark Bronze	#34 Fine Textured Bronze 449/95511
7	Entrance Bench - 80"	1	Benchmark Design Group	Wendover Bench - 4131	6'-8"	2'-0"	3'-0"	Aluminum - Dark Bronze	#34 Fine Textured Bronze 449/95511
8	Bike Rack - Surface Mount	2	Belson Outdoors	ORN-2-SF-P	3'-4"	2 3/8"	2'-9"	Steel	Black Powder Coated

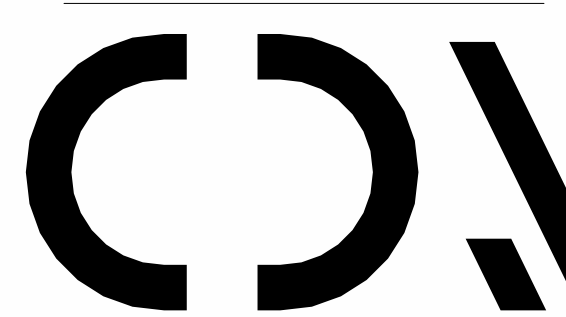


DINING PATIO PLAN



Chick-fil-A

Chick-fil-A
5200 Buffington Road
Atlanta, Georgia
30349-2998



CHIPMAN DESIGN ARCHITECTURE INC
1350 E TOUHY AVE
FIRST FLOOR EAST
DES PLAINES, IL 60018
TEL : 847.298.6900

I HEREBY CERTIFY THAT THESE PLANS HAVE BEEN PREPARED UNDER MY SUPERVISION AND THAT TO THE BEST OF MY KNOWLEDGE, THEY COMPLY WITH ALL RULES, REGULATIONS AND ORDINANCES OF PLANNING, IN RELATION TO STRUCTURES AND BUILDINGS.

CHICK-FIL-A
I-70 & SR 267 FSU
6102 Cambridge Way
Plainfield, IN 46168

FSR#05219
BUILDING TYPE / SIZE: P14 SE LRG
RELEASE: 22.08

REVISION SCHEDULE		
NO.	DATE	DESCRIPTION

PRELIMINARY
CONSULTANT PROJECT # 22-2319.00
PRINTED FOR PRELIMINARY
DATE 04/24/23
DRAWN BY CB
CHECKED BY CG
DESIGNED BY CG
DESIGN OVERVIEW

SHEET NUMBER
X-900