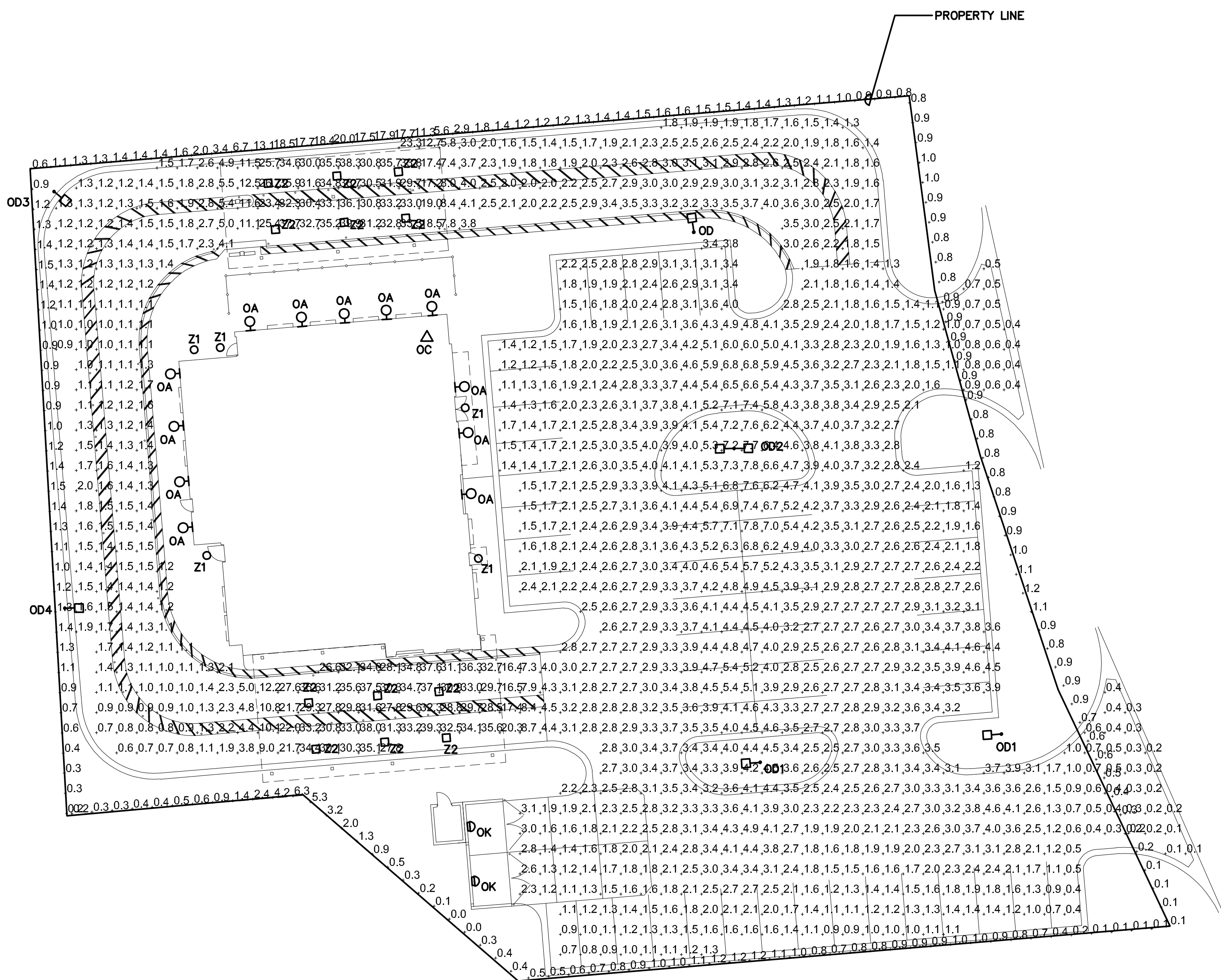
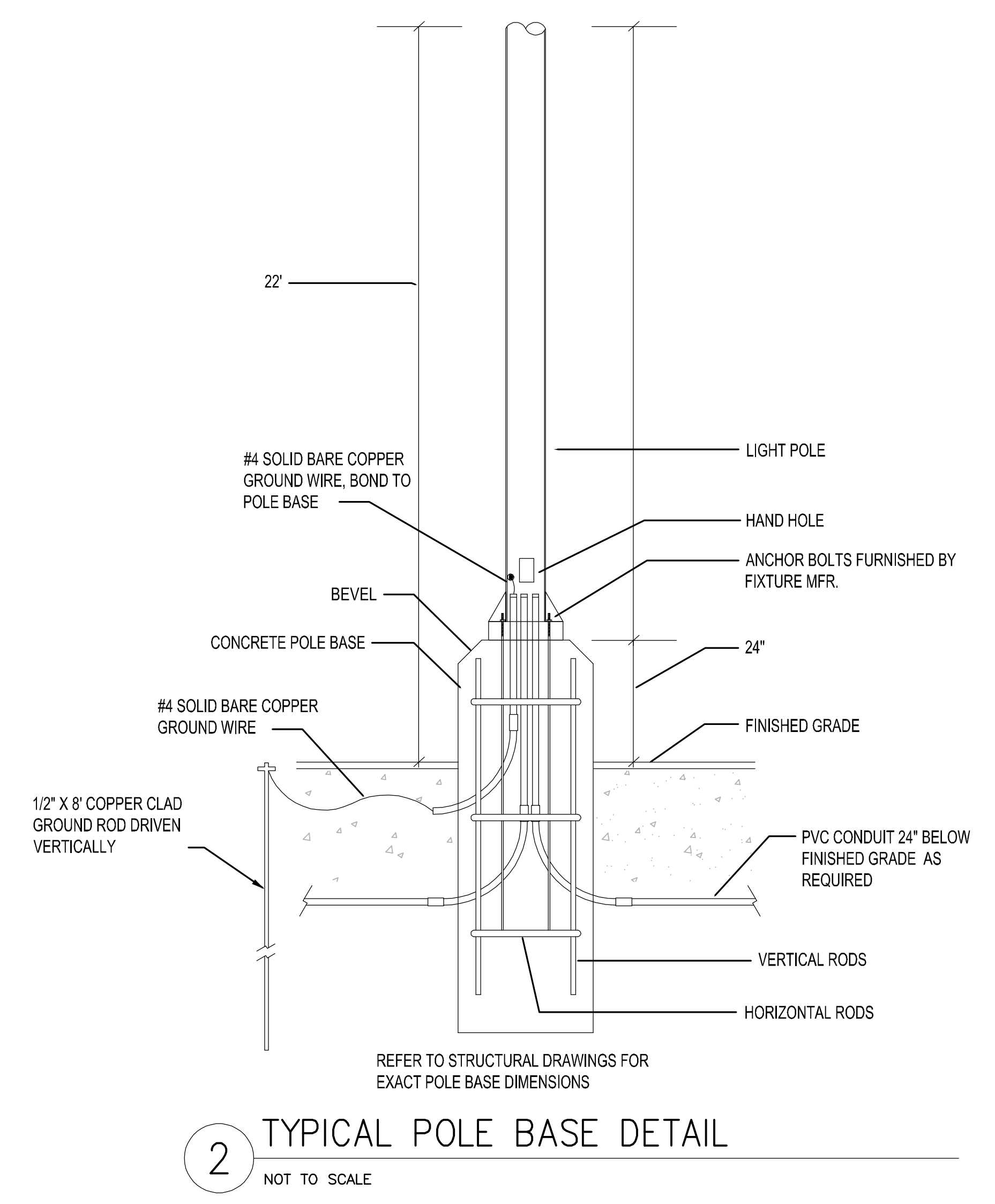
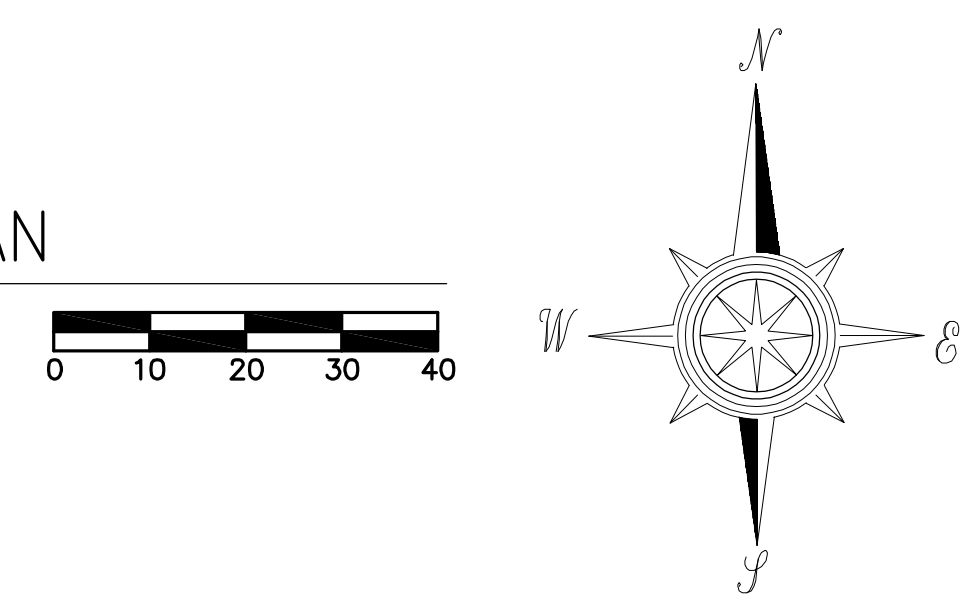


Chick-fil-A
5200 Buffington Road
Atlanta, Georgia 30349-2998

DICKERSON ENGINEERING, INC.
Professional Engineer
Arlington Heights, IL 60004
TEL (847) 866-0280
FAX (847) 866-0284



1 PHOTOMETRIC PLAN
SCALE: 1"=20'-0"



2 TYPICAL POLE BASE DETAIL
NOT TO SCALE

PHOTOMETRIC STATISTICS (MAINTAINED) IN PARKING LOT (NOT INCLUDING UNDER CANOPY LIGHTING)	
AVERAGE	4.7 FC
MAX	6.2 FC
MIN	0.1 FC

FIXTURE	HEIGHT (UNLESS NOTED OTHERWISE)	LIGHT LOSS FACTOR	COLOR	LIGHT FIXTURE SPECIFICATION	POLE	COMMENTS
OC	ON BUILDING	.9	4000K	HUBBELL - FLL-42L-95-4K7-N-U-K-DB		
OD	22'	.9	4000K	COOPER/LUMARK - PRV-C250-UNV-T3-SA-BZ	KW INDUSTRIES SSP20-5.0-7-BRZ-DM10-BC (SINGLE LUMINAIRE)	
OD1	22'	.9	4000K	COOPER/LUMARK - PRV-C60D-UNV-T4-SA-BZ	KW INDUSTRIES SSP20-5.0-7-BRZ-DM10-BC (SINGLE LUMINAIRE)	
OD2	22'	.9	4000K	(2) COOPER/LUMARK - PRV-C250-UNV-T4-SA-BZ	KW INDUSTRIES SSP20-5.0-7-BRZ-DM2180-BC (TWO LUMINAIRE @ 180 DEGREES)	
OD3	22'	.9	4000K	COOPER/LUMARK - PRV-C250-UNV-T4-SA-BZ-HSS	KW INDUSTRIES SSP20-5.0-7-BRZ-DM10-BC (SINGLE LUMINAIRE) W/ HOUSE SIDE SHIELD	
OD4	22'	.9	4000K	COOPER/LUMARK - PRV-C250-UNV-T3-SA-BZ-HSS	KW INDUSTRIES SSP20-5.0-7-BRZ-DM10-BC (SINGLE LUMINAIRE) W/ HOUSE SIDE SHIELD	
OA	8'	.9	3000K	PROGRESS LIGHTING - P5675-31 WITH TOP COVER LENS		
OK	8'	.9	3000K	HUBBELL - LNC-SLU-3K-3-1		
Z1	10'	.9	3000K	PROVIDED WITH CANOPY		
Z2	9.5'	.5	3000K	LSI - CRUS-SC-LED-LW30-UE-WHT		

CHICK-FIL-A
PLAINFIELD FSU
6102 CAMBRIDGE WAY
PLAINFIELD, IN 46168

FSR# 05219

REVISION SCHEDULE		
NO.	DATE	DESCRIPTION

ARCHITECT'S PROJECT # _____
PRINTED FOR _____ ZONING REVIEW
DATE 04/13/2023
DRAWN BY JRWGD

Information contained on this drawing and all digital files produced for above named project may not be reproduced in any manner without express written or verbal consent from authorized project representatives.

SHEET
PHOTOMETRIC PLAN
SHEET NUMBER
E-102