

OVERALL AREA: 1282 SF  
 AREA EXCLUDING WINDOWS AND DOORS  
 PRIMARY COLOR: 370 SF 28.87%  
 SECONDARY COLOR: 657 SF 51.25%  
 OTHER MATERIAL: 266 SF 20.74%



**1 SOUTH ELEVATION**  
 1/8" = 1'-0"

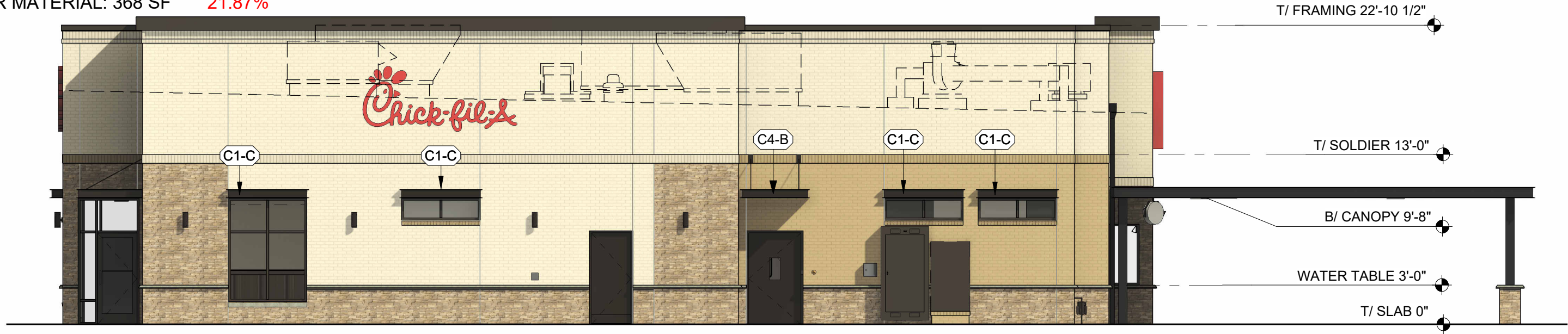
OVERALL AREA: 1444 SF  
 AREA EXCLUDING WINDOWS AND DOORS  
 PRIMARY COLOR: 386 SF 26.73%  
 SECONDARY COLOR: 712 SF 49.31%  
 OTHER MATERIAL: 338 SF 23.41%



**2 NORTH ELEVATION**  
 1/8" = 1'-0"

EXTERIOR ELEVATIONS

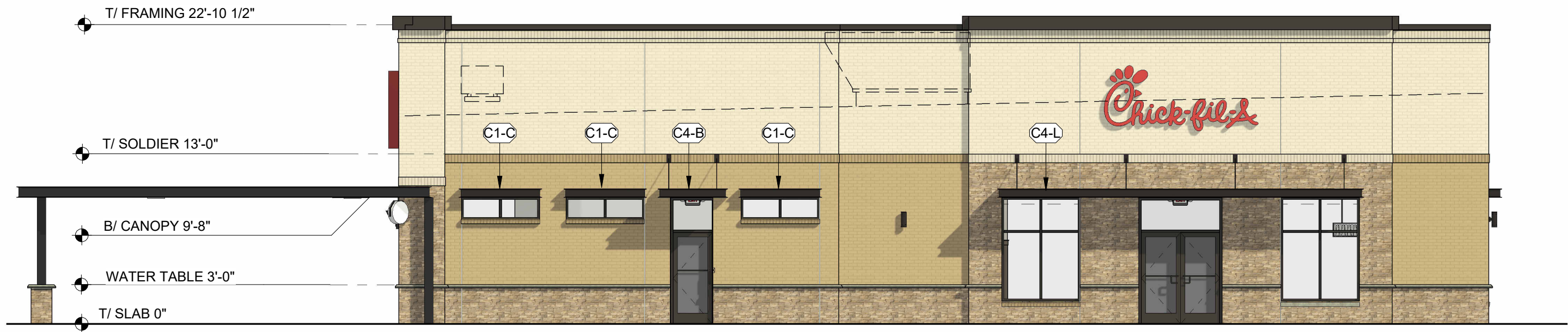
OVERALL AREA: 1683 SF  
 AREA EXCLUDING WINDOWS AND DOORS  
 PRIMARY COLOR: 251 SF 14.91%  
 SECONDARY COLOR: 1067 SF 63.40%  
 OTHER MATERIAL: 368 SF 21.87%



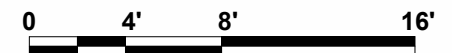
**1 WEST ELEVATION**  
 1/8" = 1'-0"



OVERALL AREA: 1651 SF  
 AREA EXCLUDING WINDOWS AND DOORS  
 PRIMARY COLOR: 428 SF 25.62%  
 SECONDARY COLOR: 822 SF 49.71%  
 OTHER MATERIAL: 413 SF 25.02%



**2 EAST ELEVATION**  
 1/8" = 1'-0"



EXTERIOR ELEVATIONS

