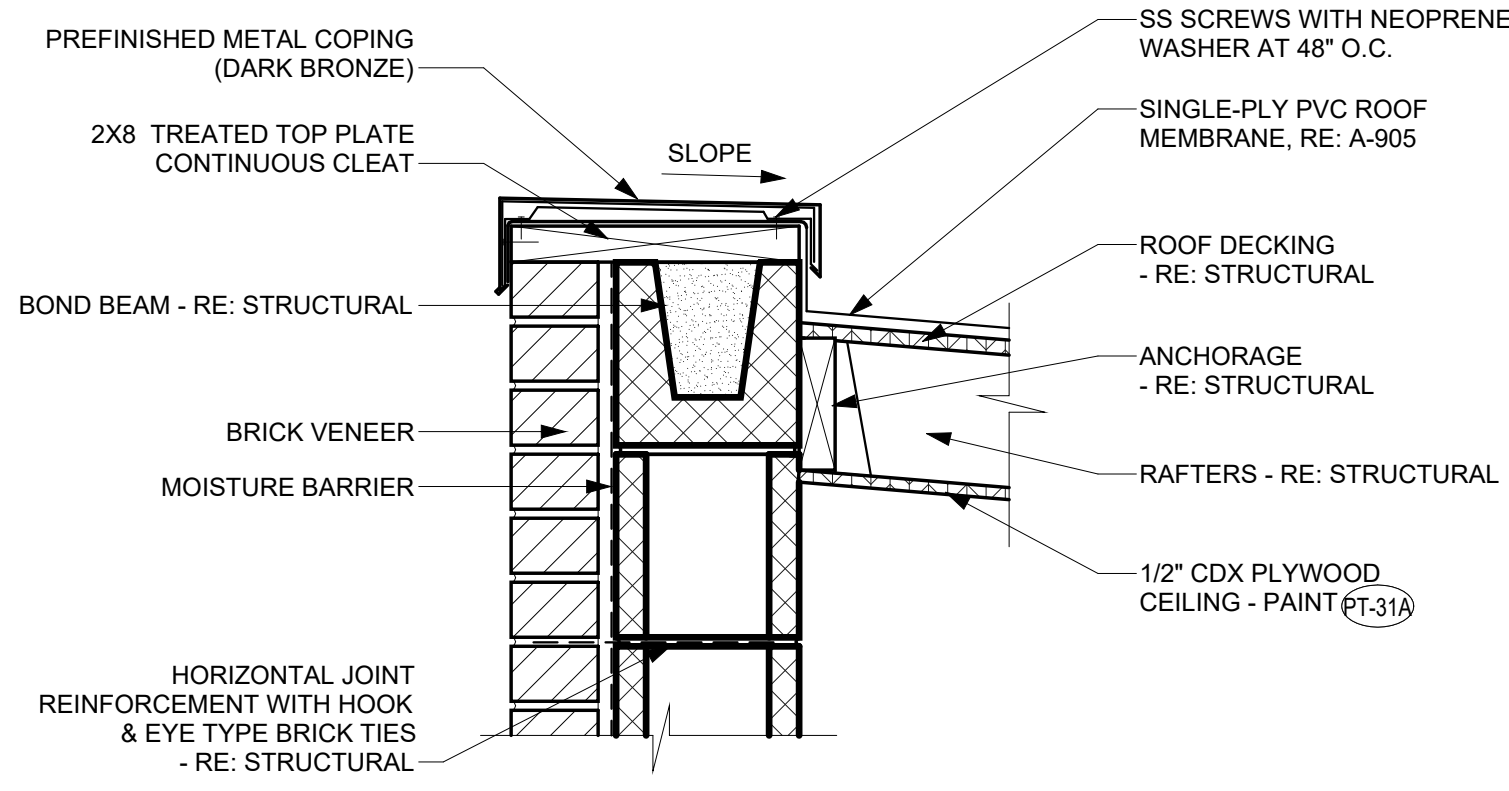


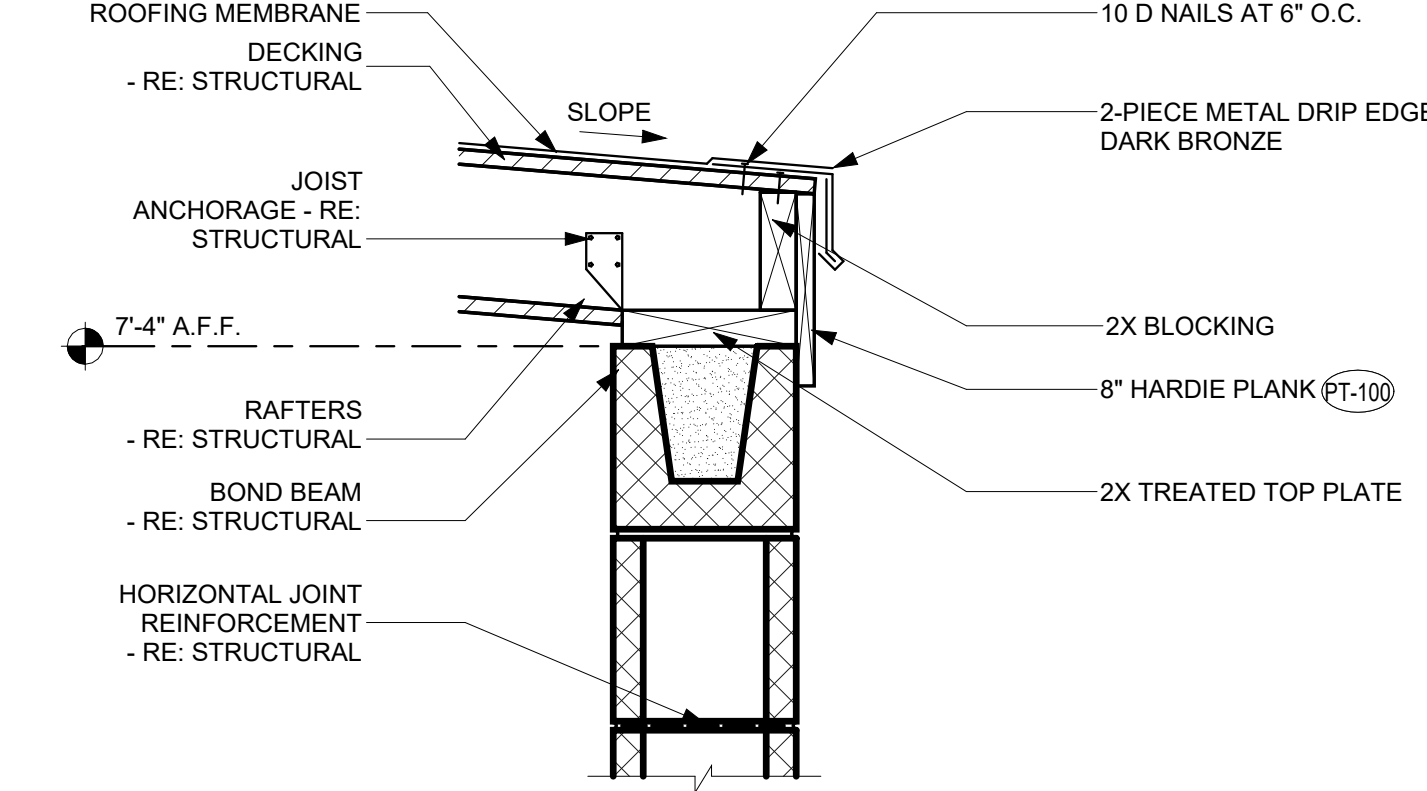
3/20/2023 2:53:36 PM Autodesk Docs://IN_05219_170 & SR 267 (IN) FSU_2022.12_FSR05219_170 & SR 267 (IN) FSU_ARC.rvt
10-SE-05219-A-103-REFUSE ENCLOSURE

REFUSE ENCLOSURE NOTES

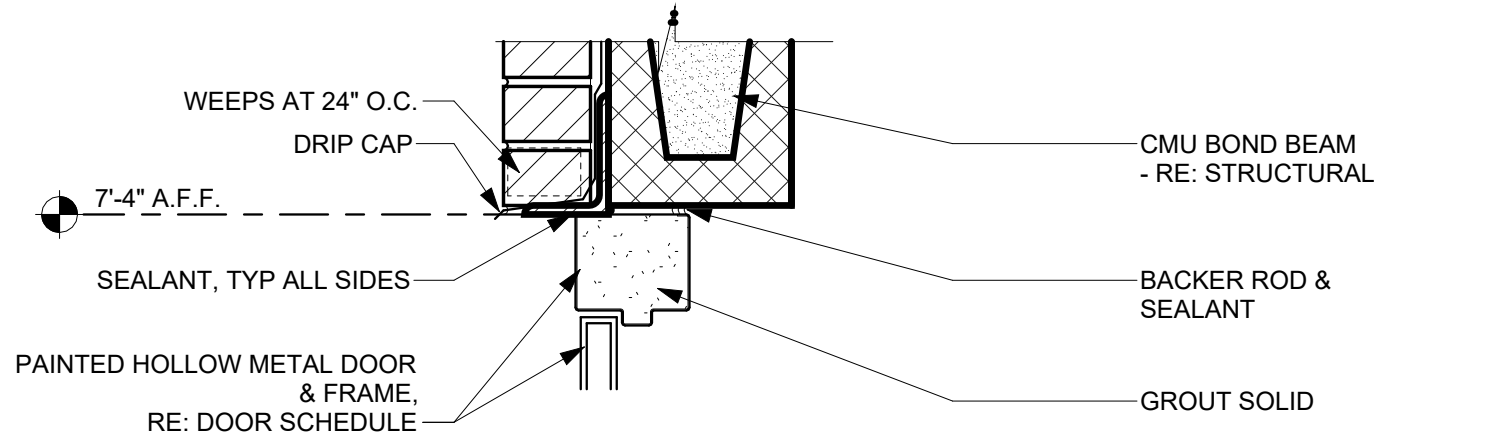
- ** IN THE ARCHITECTURAL DRAWINGS, REFUSE ENCLOSURE AND MAIN BUILDING ARE BOTH NOTED WITH FINISH SLAB AT 0'-0". ACTUAL FINISH SLAB HEIGHTS WILL VARY BETWEEN MAIN BUILDING AND REFUSE ENCLOSURE. REFER TO CIVIL FOR ALL FINISH SLAB HEIGHTS.



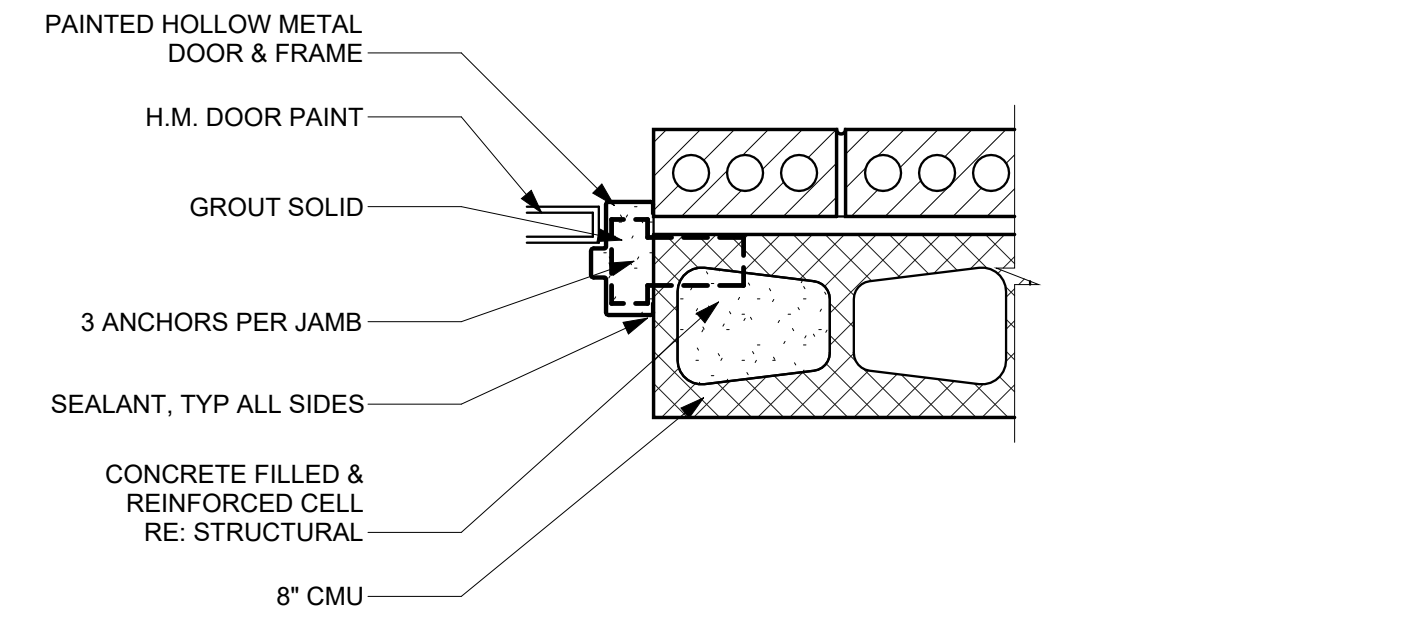
E3 REFUSE ENCLOSURE ROOF EDGE DETAIL
1 1/2" = 1'-0"



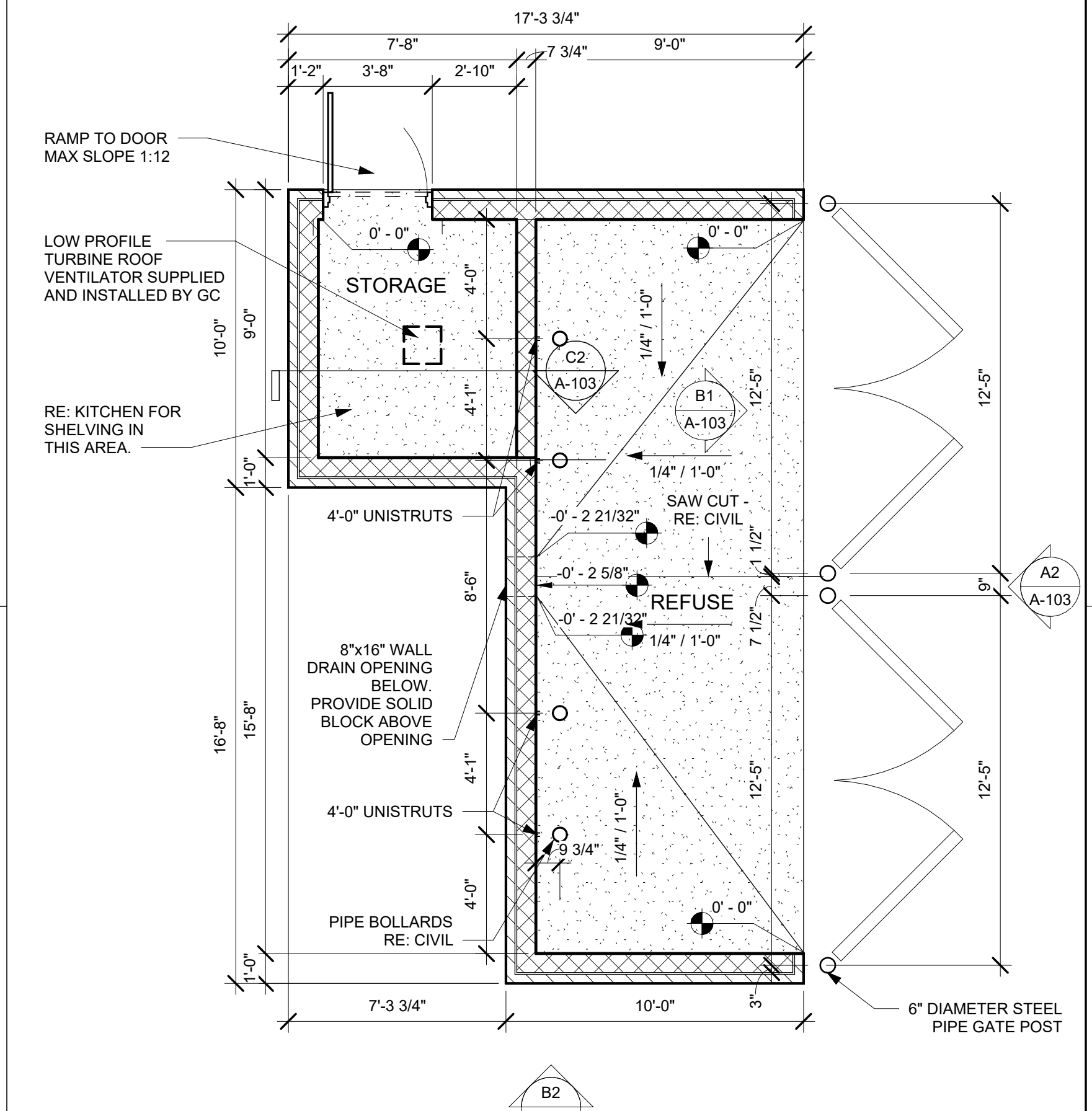
E2 REFUSE ENCLOSURE DRIP EDGE
1 1/2" = 1'-0"



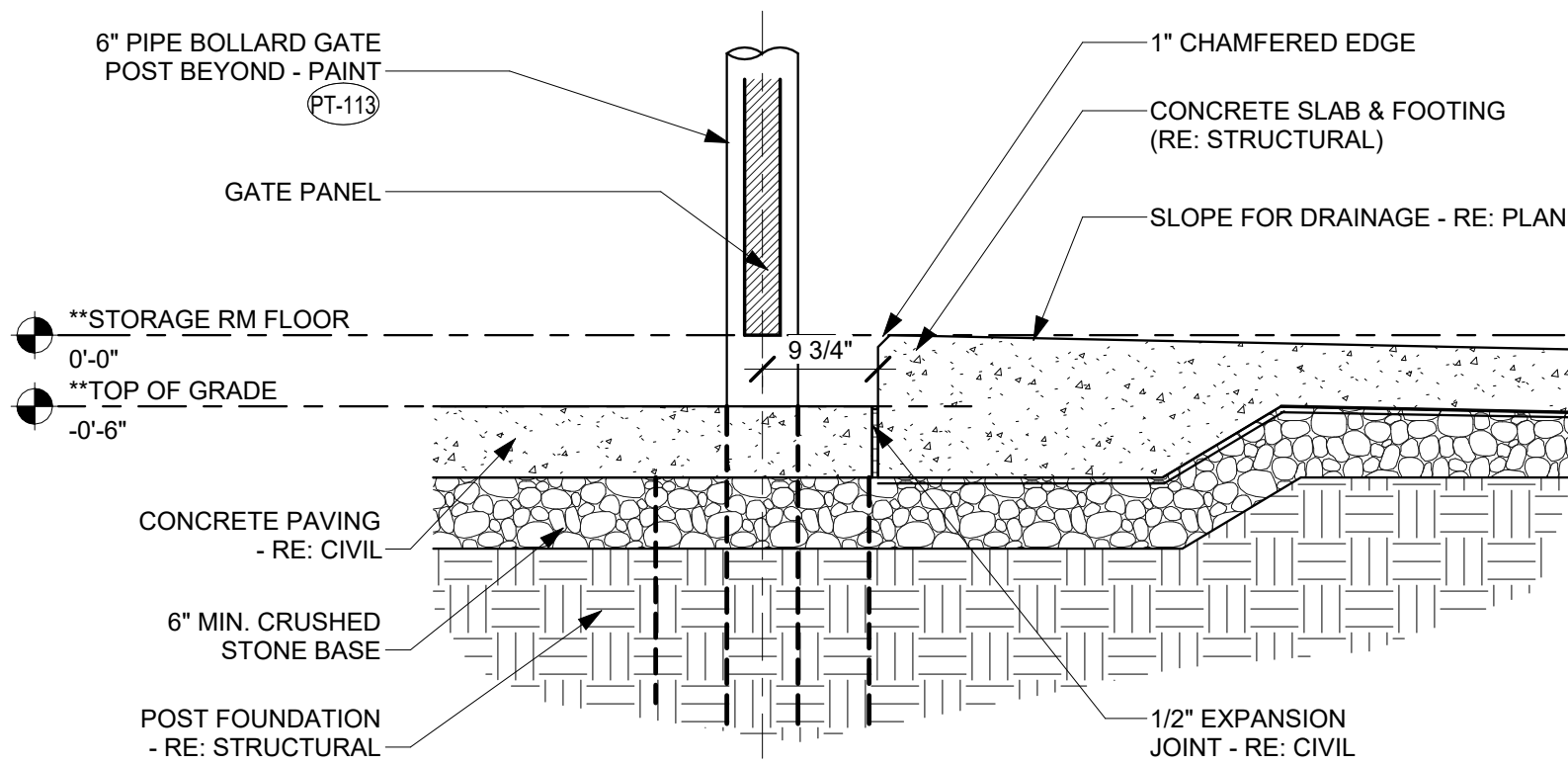
D3 REFUSE ENCLOSURE DOOR HEAD DETAIL
1 1/2" = 1'-0"



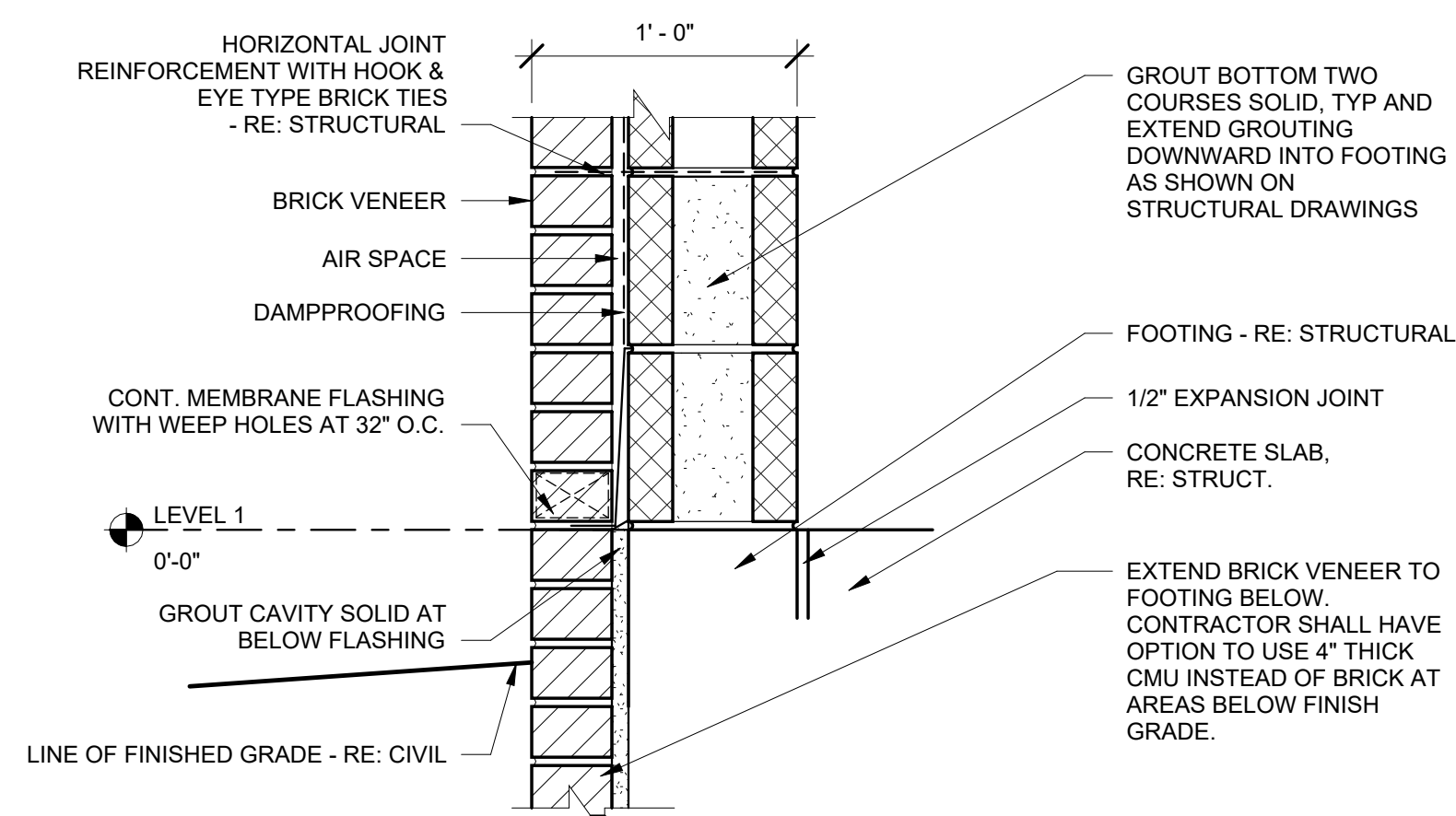
D2 REFUSE ENCLOSURE DOOR JAMB DETAIL
1 1/2" = 1'-0"



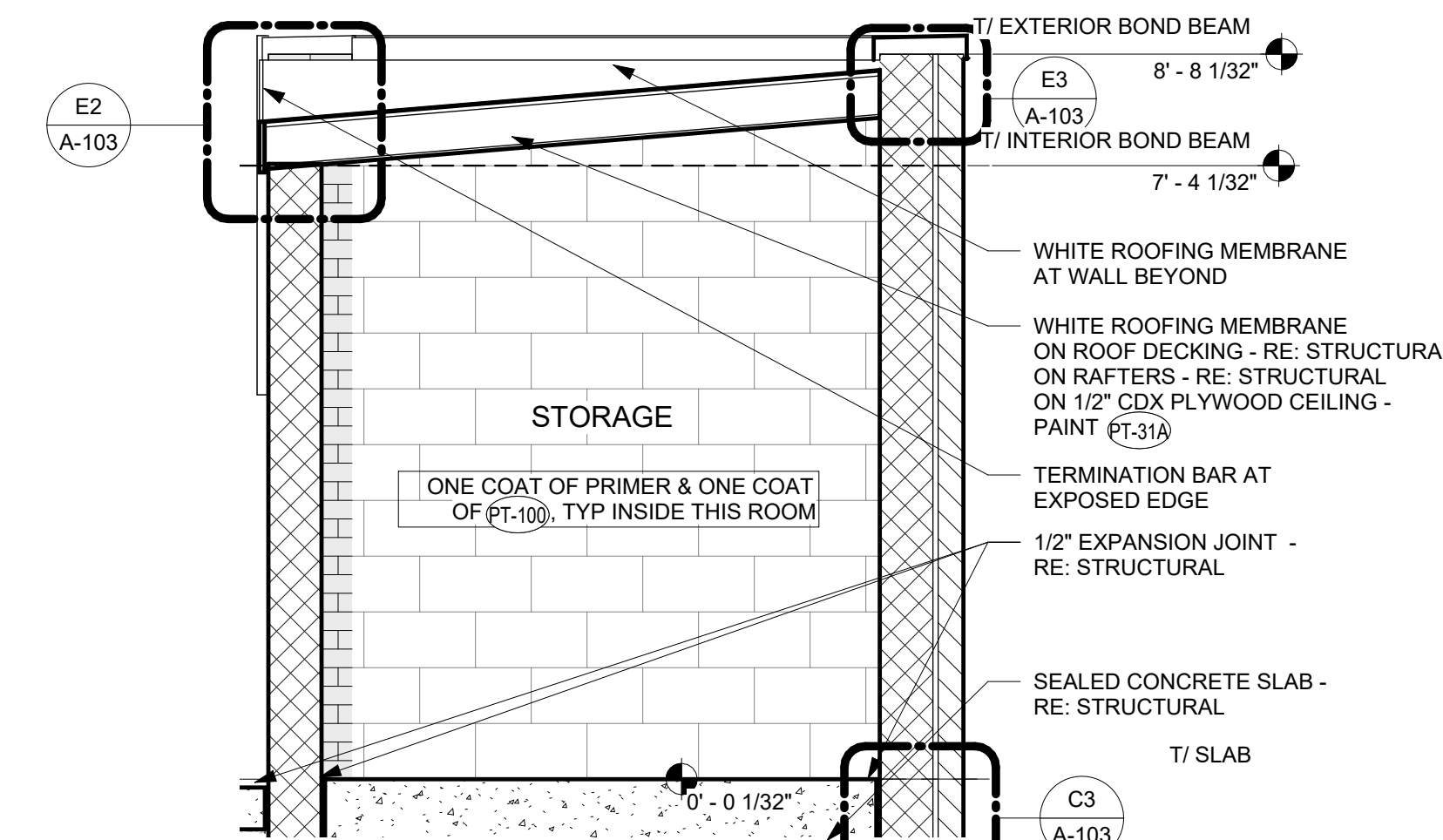
D1 REFUSE ENCLOSURE PLAN
1/4" = 1'-0"



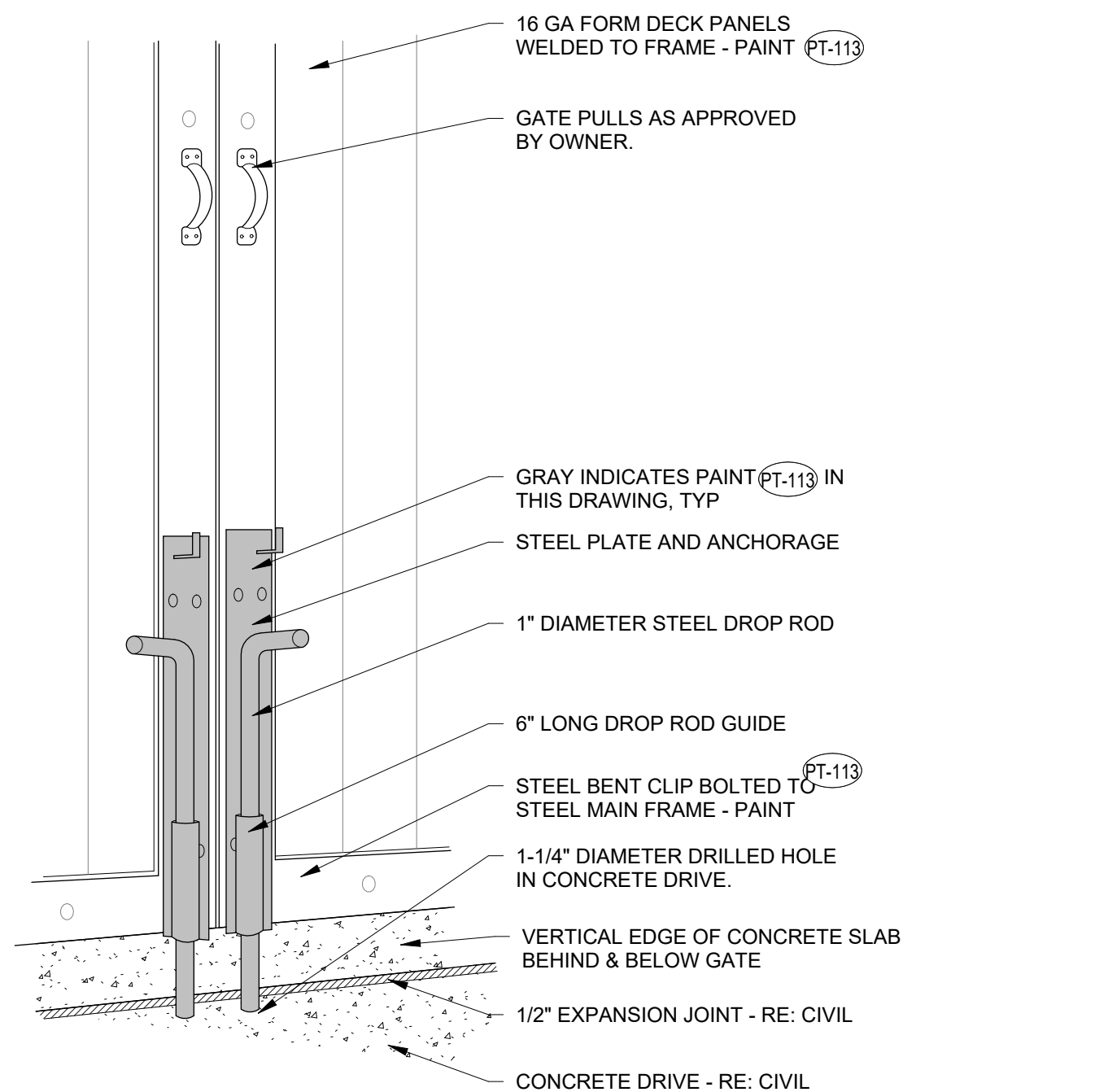
C4 REFUSE PAD AT CONCRETE PAVING DETAIL
3/4" = 1'-0"



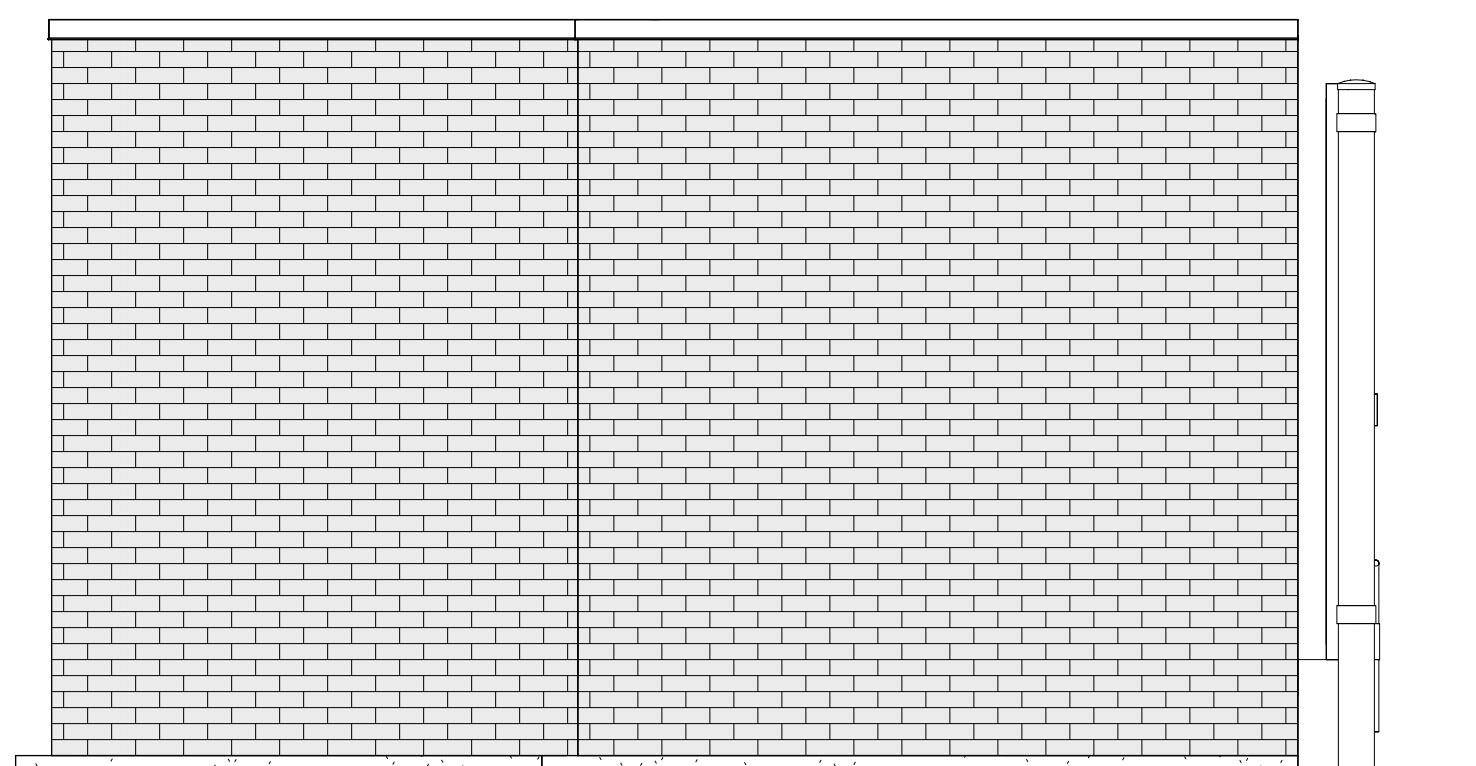
C3 REFUSE ENCLOSURE BASE DETAIL
1 1/2" = 1'-0"



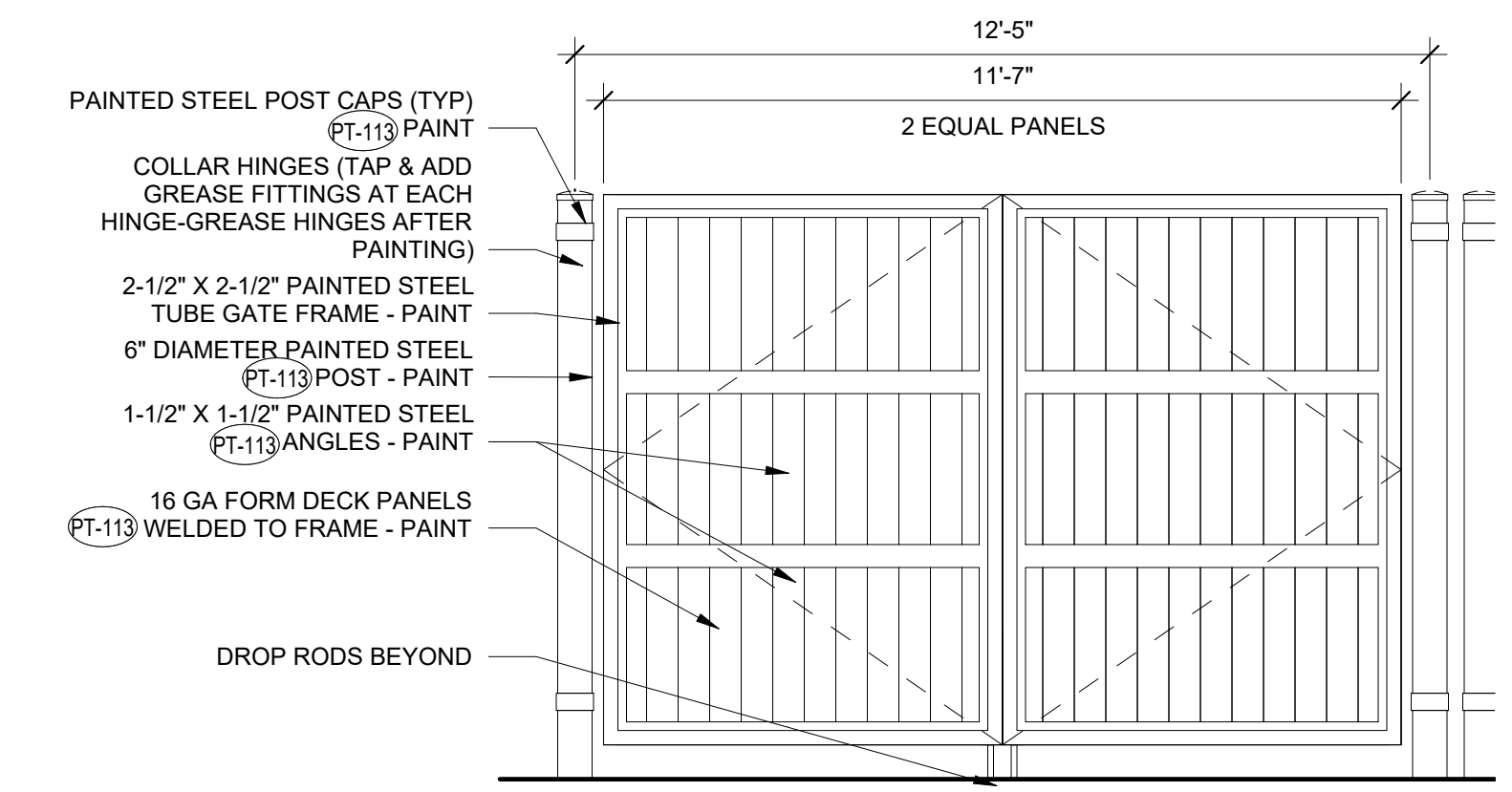
C2 REFUSE ENCLOSURE SECTION
1/2" = 1'-0"



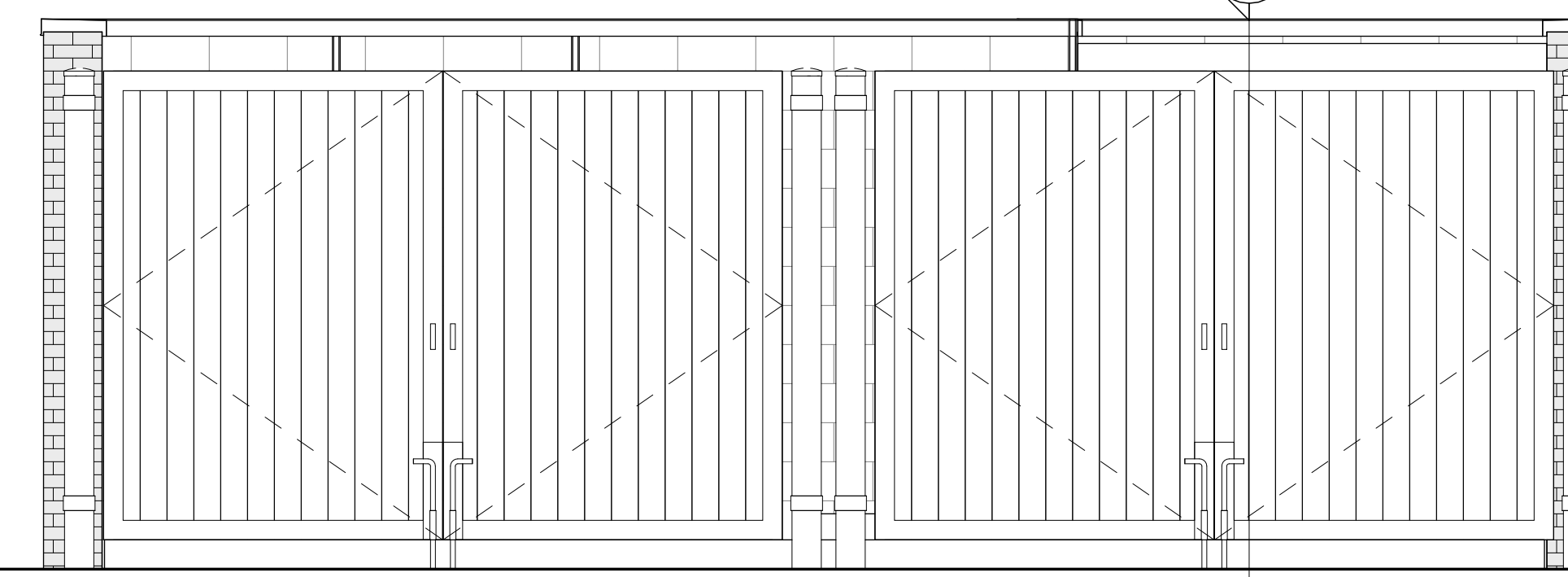
A3 REFUSE ENCLOSURE DROP ROD 3-D DECK PANEL DETAIL
1/2" = 1'-0"



B2 REFUSE ENCLOSURE ELEVATION
3/8" = 1'-0"



B1 REFUSE ENCLOSURE GATE REAR ELEVATION
3/8" = 1'-0"



A2 REFUSE ENCLOSURE ELEVATION
3/8" = 1'-0"



Chick-fil-A

Chick-fil-A
5200 Buffington Road
Atlanta, Georgia
30349-2998



CHIPMAN DESIGN ARCHITECTURE INC
1350 E TOUHY AVE
FIRST FLOOR EAST
DES PLAINES, IL 60018
TEL : 847.298.6900

I HEREBY CERTIFY THAT THESE PLANS HAVE BEEN PREPARED UNDER MY SUPERVISION AND THAT TO THE BEST OF MY KNOWLEDGE, THEY COMPLY WITH ALL RULES, REGULATIONS AND ORDINANCES OF THE JURISDICTION IN RELATION TO STRUCTURES AND BUILDINGS.

CHICK-FIL-A
I-70 & SR 267 FSU
6102 Cambridge Way
Plainfield, IN 46168

FSR#05219
BUILDING TYPE / SIZE: P14 SE LRG
RELEASE: 22.08

REVISION SCHEDULE		
NO.	DATE	DESCRIPTION

PRELIMINARY
CONSULTANT PROJECT # 22-2319.00
PRINTED FOR PRELIMINARY
DATE 03/20/23
DRAWN BY CB
CHECKED BY Checker
Information contained on this drawing and in all digital files produced for above named project may not be reproduced in any manner without express written or verbal consent from authorized project representatives.
SHEET REFUSE ENCLOSURE

SHEET NUMBER
A-103