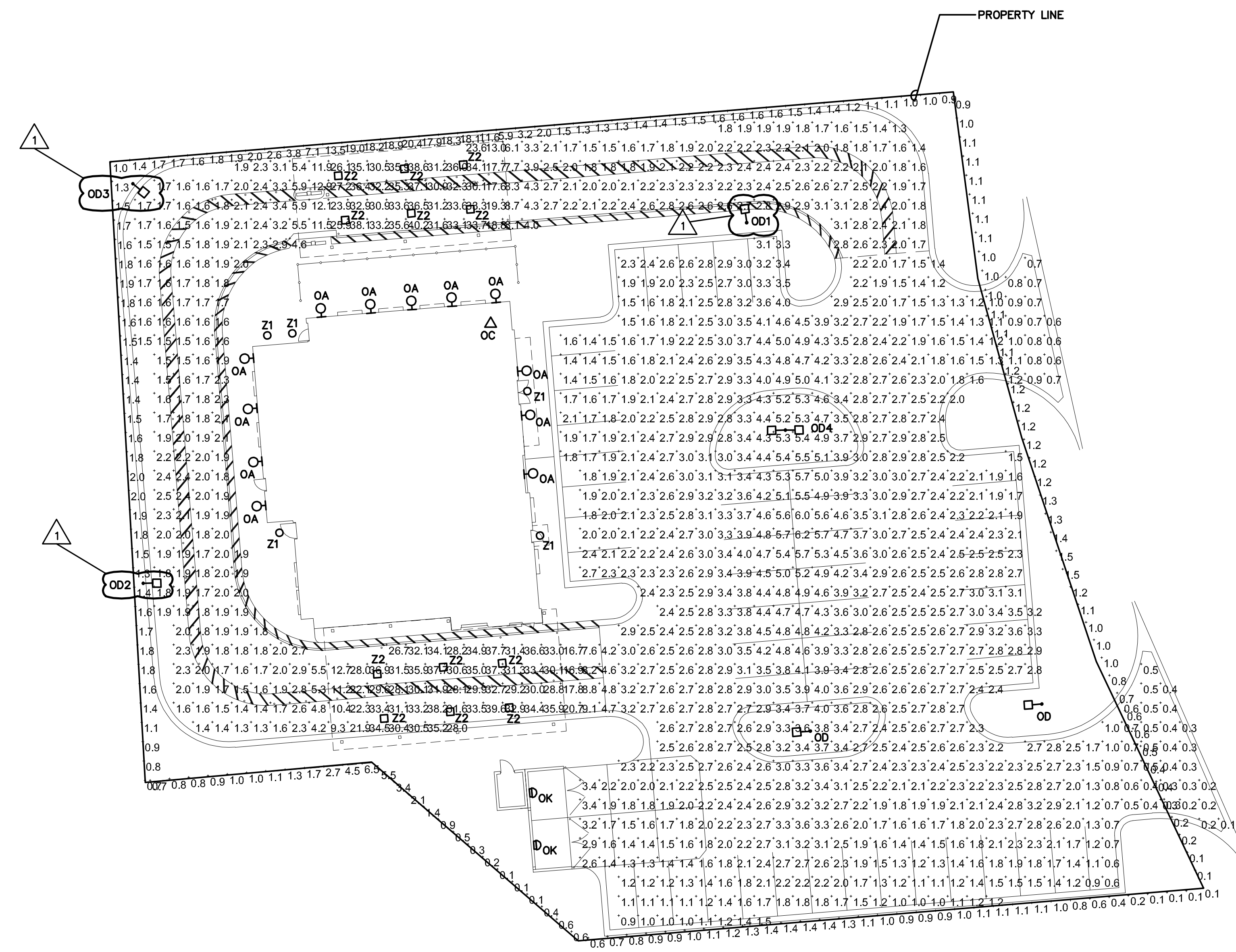
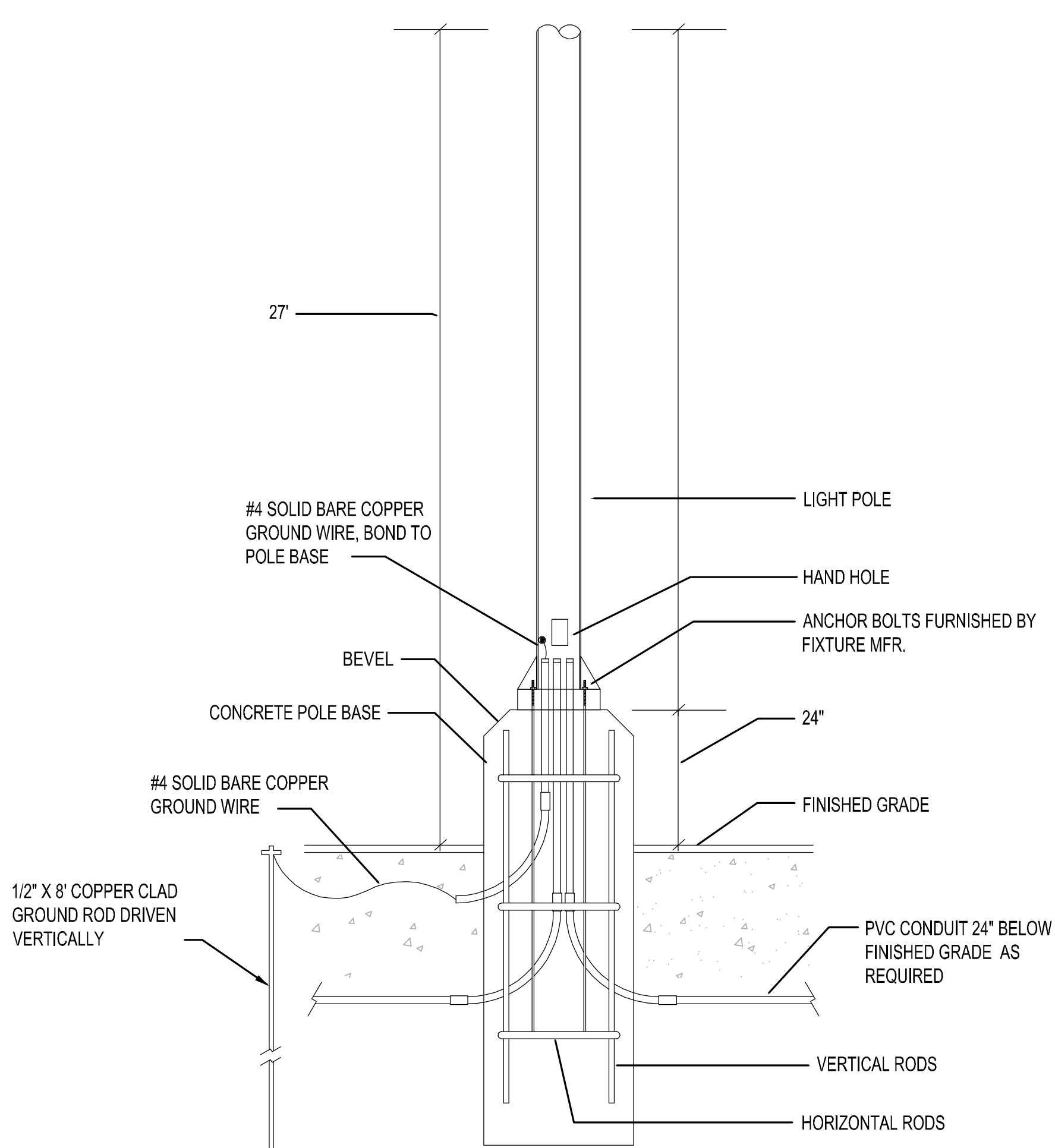
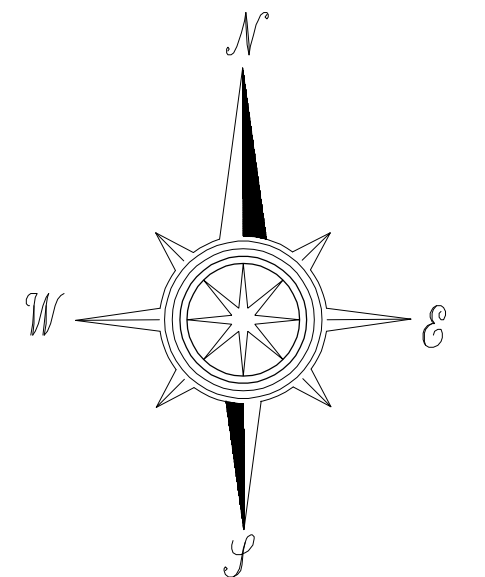
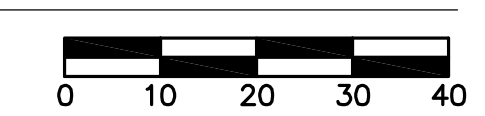


Chick-fil-A
 5200 Buffington Road
 Atlanta, Georgia 30349-2998

DICKERSON ENGINEERING, INC.
 PROFESSIONAL ENGINEER
 ARLINGTON HEIGHTS, ILL. 60004
 TEL: (847) 866-0250
 FAX: (847) 866-0254



1 PHOTOMETRIC PLAN
 SCALE: 1"=20'-0"



2 TYPICAL POLE BASE DETAIL
 NOT TO SCALE

PHOTOMETRIC STATISTICS (MAINTAINED) IN PARKING LOT (NOT INCLUDING UNDER CANOPY LIGHTING)

AVERAGE	4.7 FC
MAX	6.2 FC
MIN	0.1 FC

FIXTURE	HEIGHT (UNLESS NOTED OTHERWISE)	LIGHT LOSS FACTOR	COLOR	LIGHT FIXTURE SPECIFICATION	POLE	COMMENTS
OC	ON BUILDING	.9	4000K	HUBBELL - FLL-42L-95-4K7-N-U-K-DB		
OD	27'	.9	4000K	COOPER/LUMARK - PRV-C60D-UNV-T4-SA-BZ	SSS-4A-25-SFM-1-4 (SINGLE LUMINAIRE)	
OD1	27'	.9	4000K	COOPER/LUMARK - PRV-C25D-UNV-T3-SA-BZ	SSS-4A-25-SFM-1-4 (SINGLE LUMINAIRE)	
OD2	27'	.9	4000K	COOPER/LUMARK - PRV-C25D-UNV-T3-SA-BZ-HSS	SSS-4A-25-SFM-1-4 (SINGLE LUMINAIRE)	
OD3	27'	.9	4000K	COOPER/LUMARK - PRV-C25D-UNV-T4-SA-BZ-HSS	SSS-4A-25-SFM-1-4 (SINGLE LUMINAIRE)	
OD4	27'	.9	4000K	(2) COOPER/LUMARK - PRV-C25D-UNV-T4-SA-BZ	SSS-4A-25-SFM-2-4 (TWO LUMINAIRES AT 180 DEGREES)	
OA	8'	.9	3000K	PROGRESS LIGHTING - P5675-31 WITH TOP COVER LENS		
OK	8'	.9	3000K	HUBBELL - LNC-SLU-3K-3-1		
Z1	10'	.9	3000K	PROVIDED WITH CANOPY		
Z2	9.5'	.5	3000K	LSI - CRUS-SC-LED-LN30-UE-WHT		

CHICK-FIL-A
 APPLETON NORTH FSU
 1000 W NORTHLAND AVE
 APPLETON, WI 54914

FSR# 05266

REVISION SCHEDULE

NO.	DATE	DESCRIPTION
1	03/21/2023	CITY COMMENTS

ARCHITECT'S PROJECT # _____
 PRINTED FOR ZONING REVIEW
 DATE 01/24/2023
 DRAWN BY JRG/D

Information contained on this drawing and all digital files produced for above named project may not be reproduced in any manner without express written or verbal consent from authorized project representatives.

SHEET
PHOTOMETRIC PLAN
 SHEET NUMBER
E-102