



EXTERIOR FINISHES

BR-A BRICK VENEER COLOR: DARK BROWN SIZE: MODULAR	EC-1 PREFINISHED METAL COPING COLOR: MIDNIGHT BRONZE
BR-B BRICK VENEER COLOR: LIGHT BROWN SIZE: MODULAR	PT-13 EXTERIOR PAINT COLOR: DARK BRONZE FINISH: SEMI-GLOSS
SS-X MANUFACTURED STONE COLOR: BEECHNUT	ST-1 STOREFRONT COLOR: DARK BRONZE

ATTACHED CANOPY SCHEDULE

Mark	Description	Count	Overall Width	Overall Depth	Tie Back Mounting (Offset From Top)	Integral Lighting
C1-C	Exterior Canopy	11	6'-4"	1'-0"	0"	No
C4-B	Exterior Canopy	2	9'-4"	4'-0"	2'-4"	Yes
C4-L	Exterior Canopy	1	28'-0"	4'-0"	2'-4"	Yes
C5-A	Exterior Canopy	1	13'-4"	5'-0"	2'-4"	Yes
Grand total			15			



PERSPECTIVE VIEW



PERSPECTIVE VIEW



PERSPECTIVE VIEW



PERSPECTIVE VIEW

PROJECT DATA

Prototype Edition:	SE	Playground	NO
Exterior Finish Type:	TOWER BRICK	Landscaping Type:	STANDARD
Wall Framing Type:	METAL STUD	LEED Rating:	NOT CERTIFIED
Kitchen Type:	CENTERLINE	Drive Thru Bypass Lane:	YES
Water Filtration Type:	TYPE A	Drive Thru Number of Fulfillment Lanes:	#
Drive-Thru:	YES	Drive Thru Number of Pickup Lanes:	#
Industrialized Construction:	YES	Drive Thru Number of Order Point Pylons:	#
Number of Parking Spaces:	#	Drive Thru Number of Pickup Windows:	#
Number of Accessible Parking Spaces:	#	Drive Thru Door:	YES
Cross Parking:	YES	Square Footage:	4704
Menu Board - Interior:	YES	Seat Count - Interior:	74
Menu Board - Interior - Count:	6	Seat Count - Exterior:	28
Menu Board - Interior - Type:	DIGITAL	Canopy Type - Order Point:	DOUBLE
Menu Board - Walk-up:	N/A	Canopy Type - Meal Delivery:	DOUBLE
Menu Board - Walk-up - Count:	N/A	Number of Registers:	3
Menu Board - Walk-up - Type:	N/A		
Menu Board - Order Point:	YES		
Menu Board - Order Point - Count:	4		
Menu Board - Order Point - Type:	DIGITAL		
Planned Classification:	BASE		

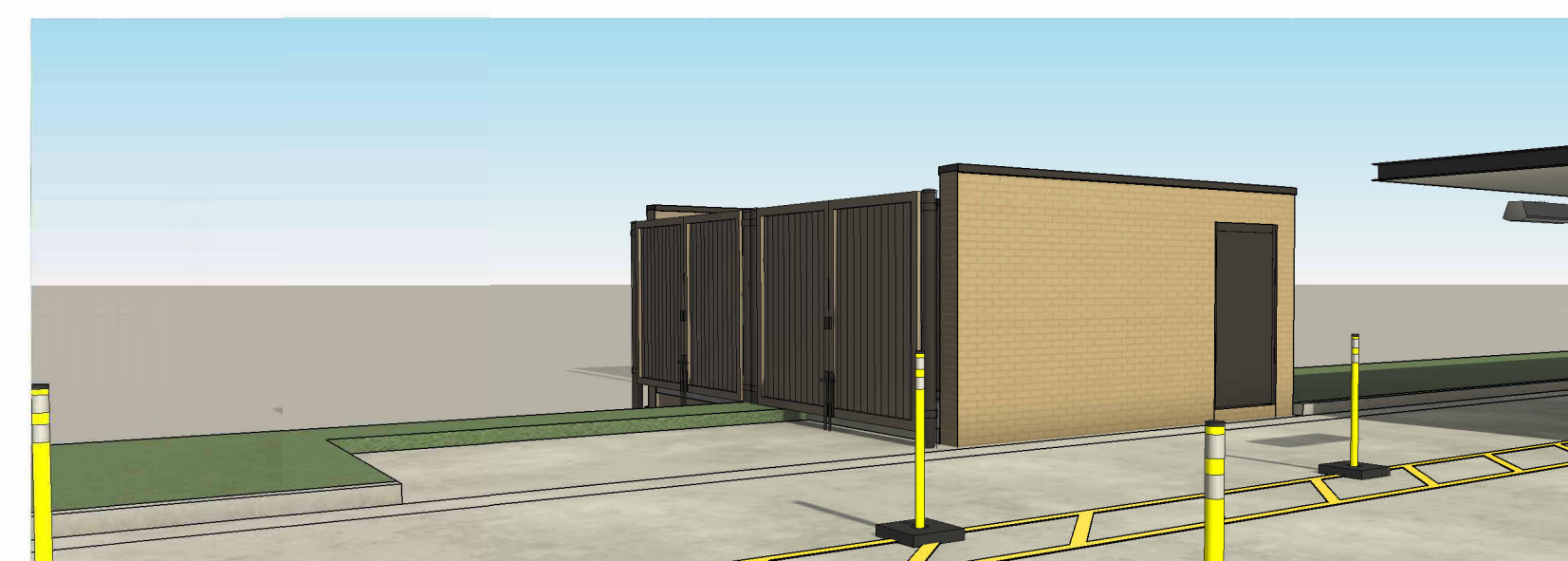
DESIGN APPROVAL

SUB
 SD
 DD
 CD

NOT APPROVED - REVISE AND RESUBMIT
 APPROVED AS NOTED - REVISE AND RESUBMIT
 APPROVED FOR DESIGN INTENT

PROJECT NOTES

OVERALL AREA: 1380 SF
 AREA EXCLUDING WINDOWS AND DOORS: 51.96%
 PRIMARY COLOR: 717 SF 51.96%
 SECONDARY COLOR: 386 SF 27.97%
 OTHER MATERIAL: 153 SF 11.09%

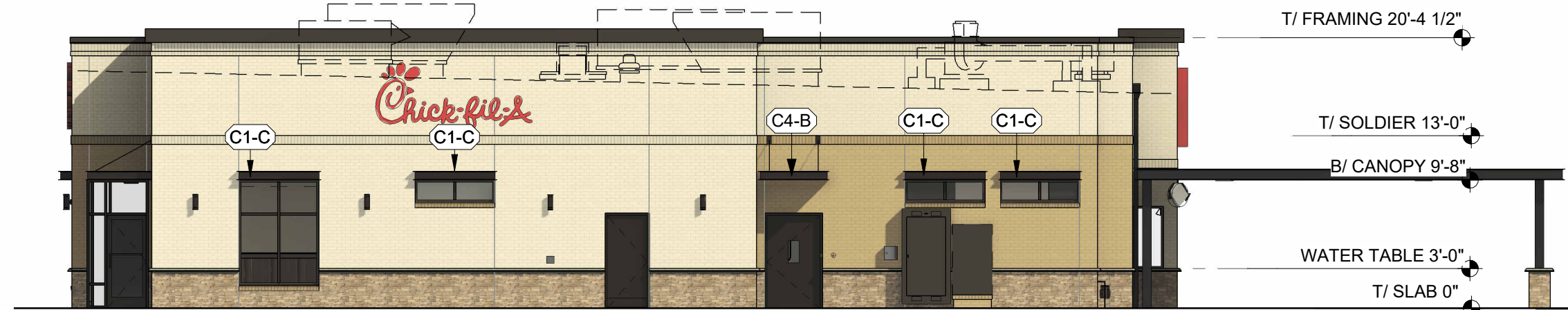


PERSPECTIVE VIEW

REF. ENCLOSURE FINISHES

	EC-1 PREFINISHED METAL COPING COLOR: MIDNIGHT BRONZE
	BR-A BRICK VENEER COLOR: DARK BROWN SIZE: MODULAR

OVERALL AREA: 1666 SF
 AREA EXCLUDING WINDOWS AND DOORS
 PRIMARY COLOR: 1004 SF 72.75%
 SECONDARY COLOR: 275 SF 16.51%
 OTHER MATERIAL: 188 SF 11.28%



EAST ELEVATION



SOUTH ELEVATION



PERSPECTIVE VIEW

OP CANOPY FINISHES

	CP-1 PREFINISHED METAL COPING COLOR: DARK BRONZE
	CP-2 METAL DECKING COLOR: WHITE

OVERALL AREA: 1666 SF
 AREA EXCLUDING WINDOWS AND DOORS
 PRIMARY COLOR: 820 SF 49.22%
 SECONDARY COLOR: 451 SF 27.07%
 OTHER MATERIAL: 187 SF 11.22%



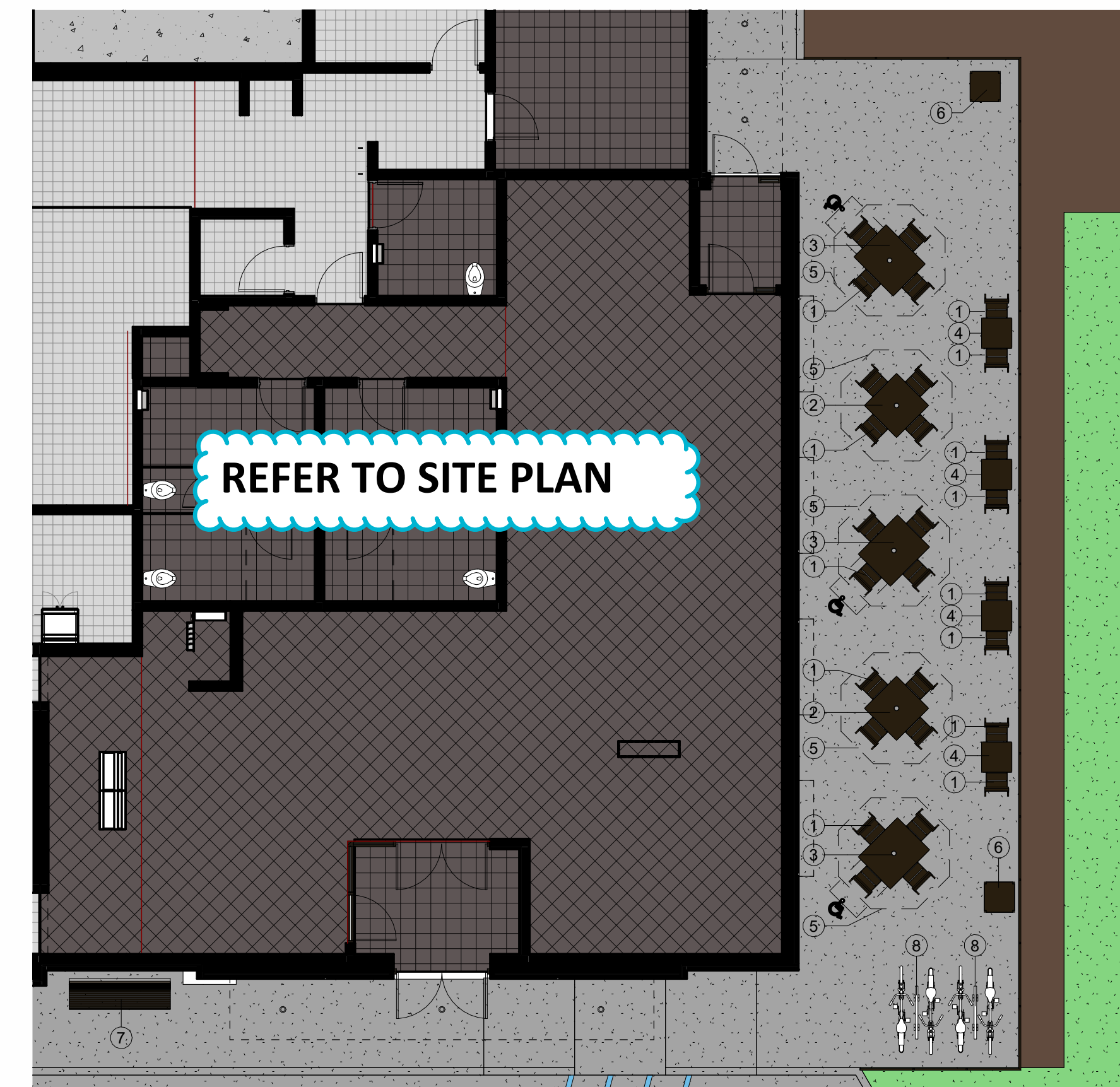
WEST ELEVATION



NORTH ELEVATION



PERSPECTIVE VIEW - PATIO



DINING PATIO PLAN

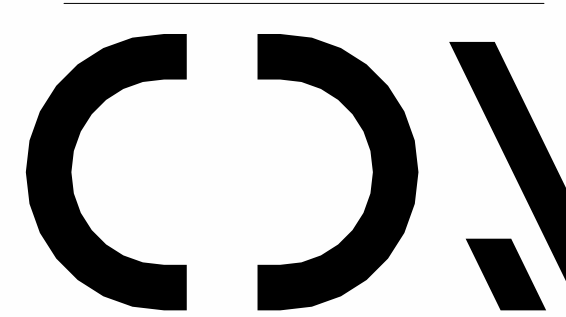
PATIO SEATING SCHEDULE

Mark	Type	Count	Manufacturer	Model	Width	Depth	Height	Material	Finish
1	Patio Chair	28	Benchmark Design Group	WENDOVER CHAIR					
2	Patio Table - 4 Top	2	Benchmark Design Group	TAB3055-3636-AAL-WJ-UH-BOT	3'-0"	3'-0"	2'-5 1/4"	Aluminum - Dark Bronze	RAL 49/66220 (C34 Bronze One Coat)
3	Patio Table - 4 Top - ADA	3	Benchmark Design Group	TAB3055-3644-AAL-WJ-UH-BOT	3'-8"	3'-0"	2'-5 1/4"	Aluminum - Dark Bronze	RAL 49/66220 (C34 Bronze One Coat)
4	Patio Table - 2 Top	4	Benchmark Design Group	TAB3055-2424-AAL-WJ-BOT	2'-0"	2'-0"	2'-5 1/4"	Aluminum - Dark Bronze	RAL 49/66220 (C34 Bronze One Coat)
5	Patio Umbrella	5	Tuuci	OCEAN MASTER PARASOL					
6	Trash Receptacle	2	Benchmark Design Group	CFA-AL-2444	2'-0"	2'-0"	3'-11"	Dark Bronze	RAL 49/66220 (C34 Bronze One Coat)
7	Entrance Bench - 80"	1	Benchmark Design Group	Wendover Bench - 4131	6'-8"	2'-0"	3'-0"	Aluminum - Dark Bronze	#34 Fine Textured Bronze 449/96511
8	Bike Rack - Surface Mount	2	Belson Outdoors	ORN-2-SF-P	3'-4"	2 3/8"	2'-9"	Steel	Black Powder Coated



Chick-fil-A

Chick-fil-A
 5200 Buffington Road
 Atlanta, Georgia
 30349-2998



CHIPMAN DESIGN ARCHITECTURE INC
 1350 E TOUHY AVE
 FIRST FLOOR EAST
 DES PLAINES, IL 60018
 TEL : 847.298.6900

I HEREBY CERTIFY THAT THESE PLANS HAVE BEEN PREPARED UNDER MY SUPERVISION AND THAT TO THE BEST OF MY KNOWLEDGE, THEY COMPLY WITH ALL RULES, REGULATIONS AND ORDINANCES OF PLANNING, IN RELATION TO STRUCTURES AND BUILDINGS.

CHICK-FIL-A
 I-70 & SR 267 FSU
 6102 Cambridge Way
 Plainfield, IN 46168

FSR#05219
 BUILDING TYPE / SIZE: P14 SE LRG
 RELEASE: 22.08

REVISION SCHEDULE
 NO. DATE DESCRIPTION

PRELIMINARY
 CONSULTANT PROJECT # 22-2319.00
 PRINTED FOR PRELIMINARY
 DATE 03/20/23
 DRAWN BY CB
 CHECKED BY CG
 Information contained on this drawing and in all digital files produced for above named project may not be reproduced in any manner without express written or verbal consent from authorized project representatives.
 SHEET DESIGN OVERVIEW

SHEET NUMBER
X-900

OVERALL AREA: 1380 SF
 AREA EXCLUDING WINDOWS AND DOORS
 PRIMARY COLOR: 571 SF 41.38%
 SECONDARY COLOR: 367 SF 26.59%
 OTHER MATERIAL: 146 SF 10.58%



1 EXTERIOR ELEVATION (NORTH)
 1/8" = 1'-0"

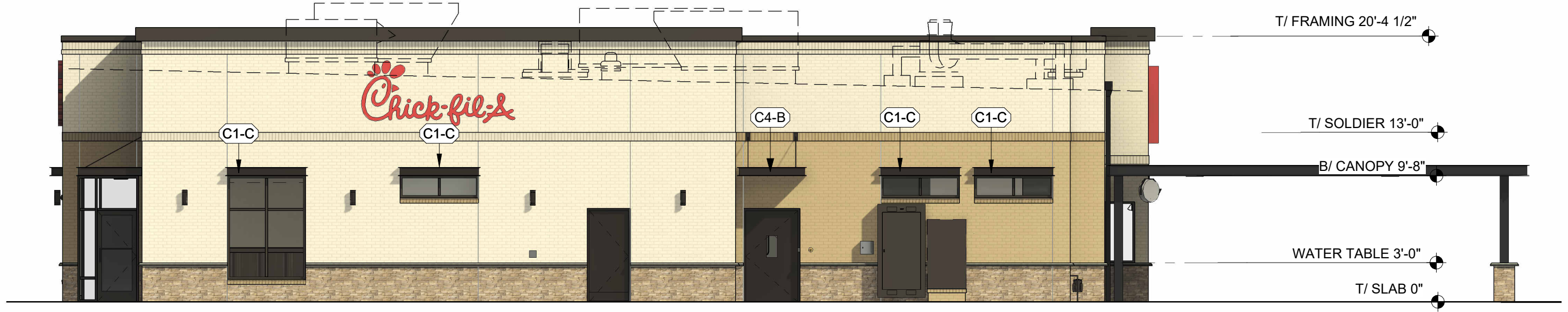
OVERALL AREA: 1380 SF
 AREA EXCLUDING WINDOWS AND DOORS
 PRIMARY COLOR: 717 SF 51.96%
 SECONDARY COLOR: 386 SF 27.97%
 OTHER MATERIAL: 153 SF 11.09%



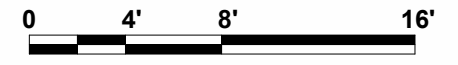
2 EXTERIOR ELEVATION (SOUTH)
 1/8" = 1'-0"

EXTERIOR ELEVATIONS

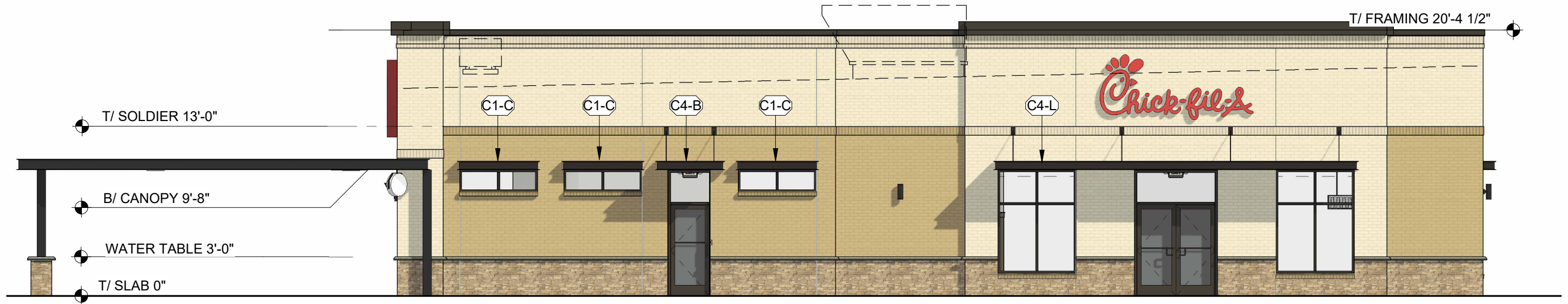
OVERALL AREA: 1666 SF
 AREA EXCLUDING WINDOWS AND DOORS
 PRIMARY COLOR: 1004 SF 72.75%
 SECONDARY COLOR: 275 SF 16.51%
 OTHER MATERIAL: 188 SF 11.28%



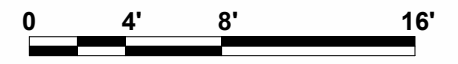
1 EXTERIOR ELEVATION (WEST)
 1/8" = 1'-0"



OVERALL AREA: 1666 SF
 AREA EXCLUDING WINDOWS AND DOORS
 PRIMARY COLOR: 820 SF 49.22%
 SECONDARY COLOR: 451 SF 27.07%
 OTHER MATERIAL: 187 SF 11.22%



2 EXTERIOR ELEVATION (EAST)
 1/8" = 1'-0"



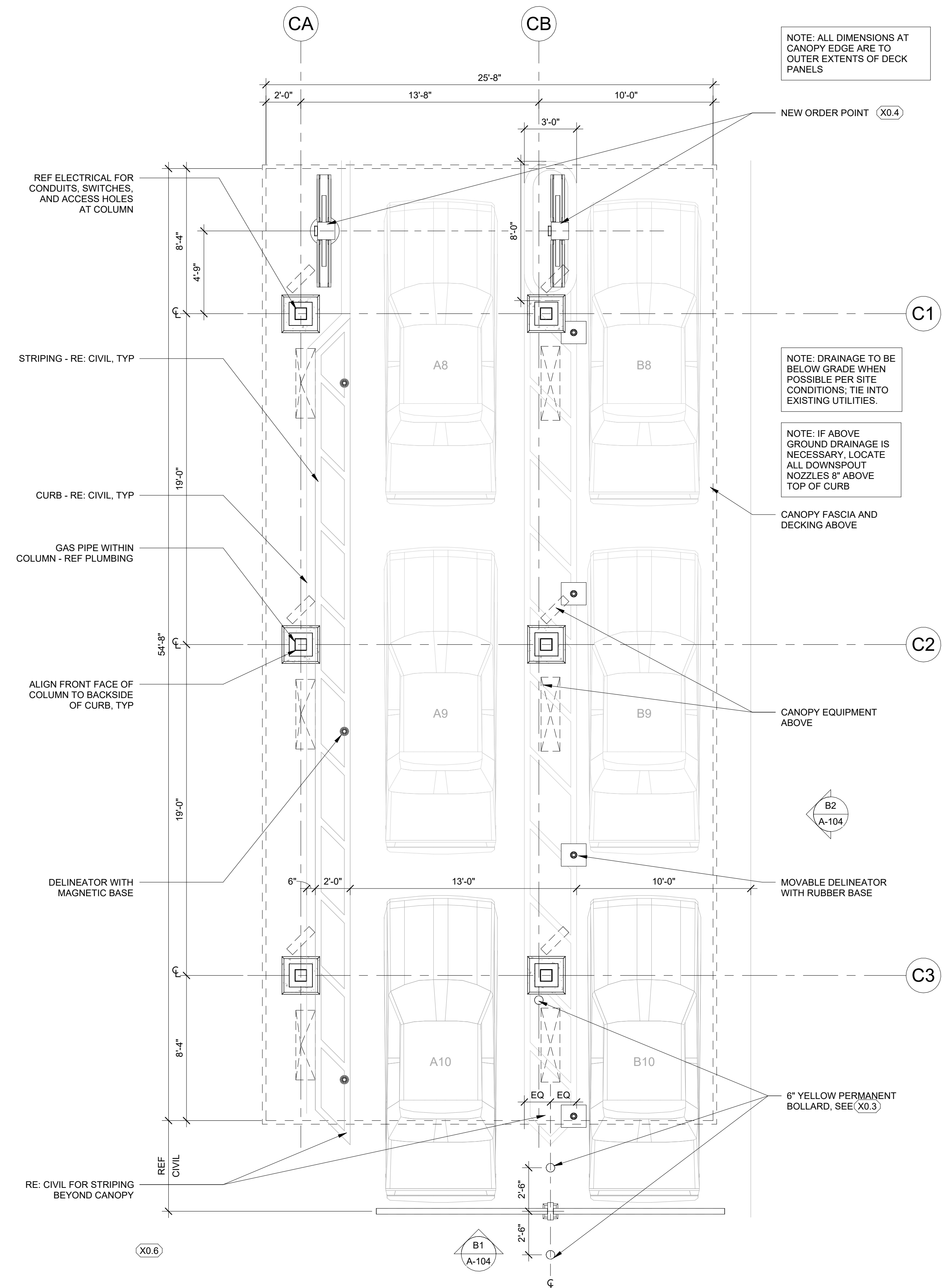
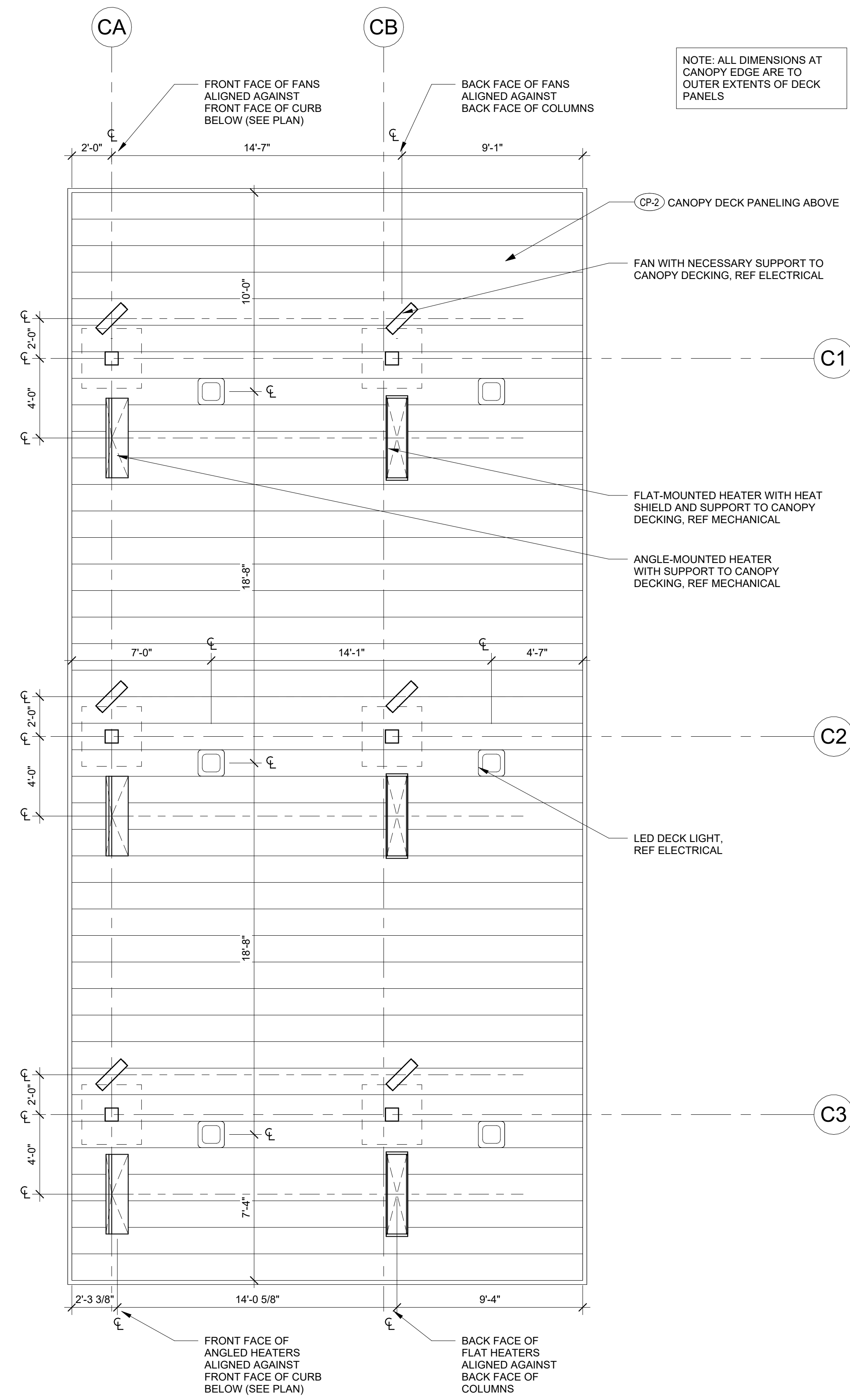
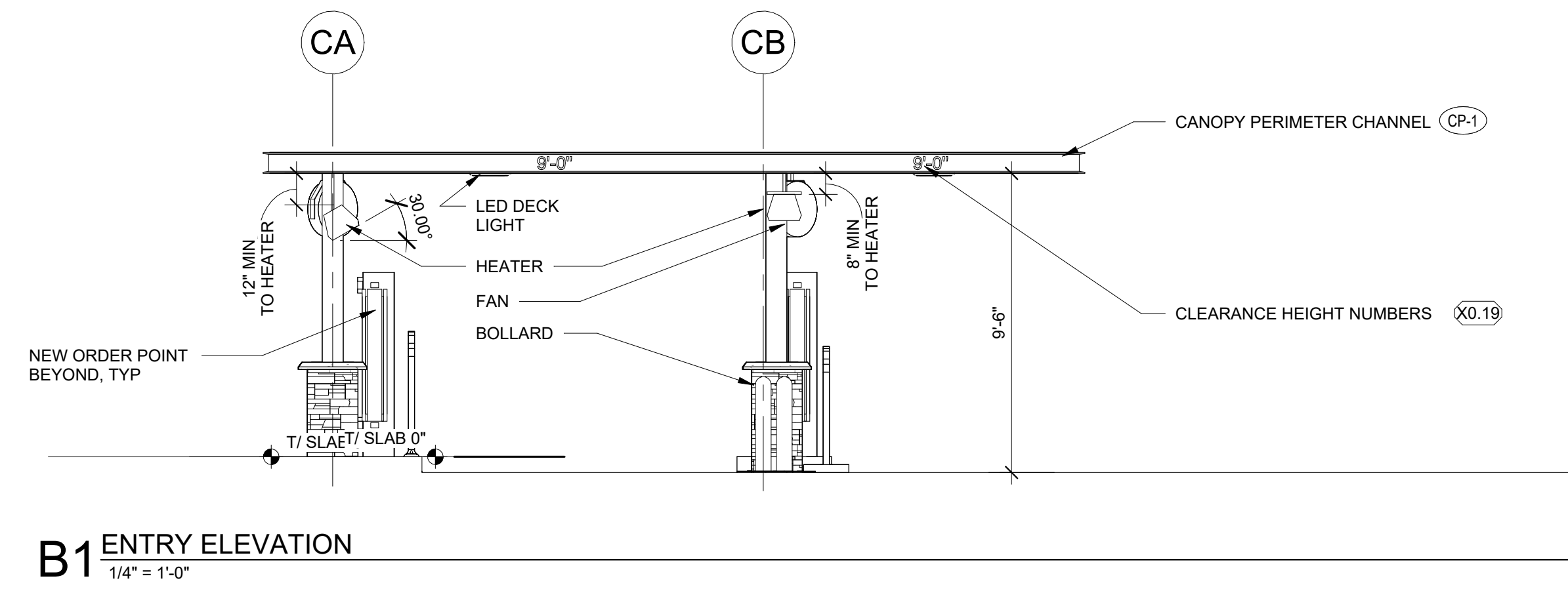
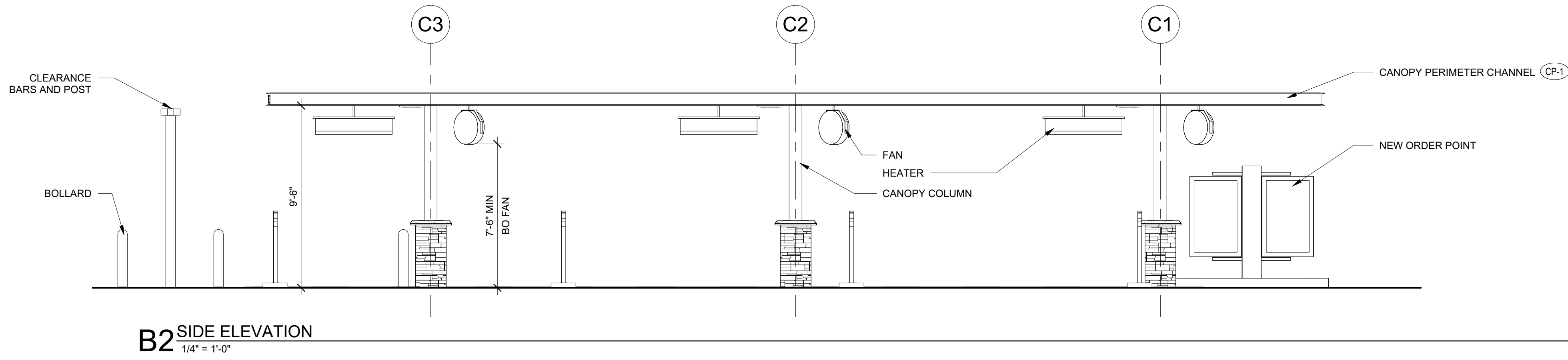
EXTERIOR ELEVATIONS



3/21/2023 2:44:14 PM Autodesk Docs://IN_05219_170 & SR 267 (IN) FSU_2022.12_FSR05219_170 & SR 267 (IN) FSU_ARC.rvt 10-SE-05219-A-104-ORDER POINT CANOPY

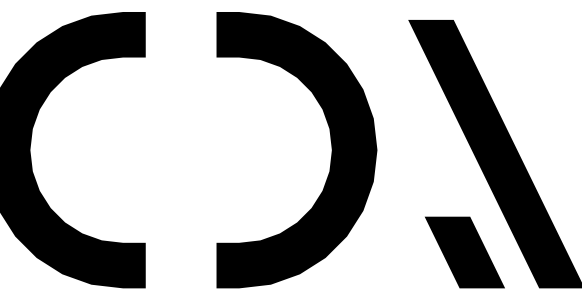
NOTE:
THIS SHEET IS FOR DESIGN REFERENCE ONLY. REFER TO CANOPY SHOP DRAWINGS FOR ENGINEERING DETAILS AND CALCULATIONS. SHOP DRAWINGS TO BE SUBMITTED FOR REVIEW BY GENERAL CONTRACTOR.

TAG	EQUIPMENT	APPLICABLE TIER			SUPPLIER	CONTACT	MANUFACTURER	MODEL NUMBER	COMMENTS
		1	2	3					
X0.3	BOLLARD SLEEVE	-	X	X	GC	-	INTERSTATE PRODUCTS OR EQUAL	1736YRS - EAGLE 6"	
X0.4	C7 ORDER POINT W/O CANOPY	-	X	X	UNISTRUCTURES OR CHANDLER SIGNS	Carolyn Ward (678-974-1759) c.ward@unistructures.com OR Kristen Hamilton, Amy McCann, or Scarlett Quintero (210-349-3804) CFA@chandlersigns.com	UNISTRUCTURES OR CHANDLER SIGNS	-	83" L x 15" W x 77" H; See shop drawings for more information. Dark Bronze textured finish. Route conduit from building to order point as indicated on drawings
X0.6	C7 DOUBLE CLEARANCE BAR	-	BY SITE	BY SITE	UNISTRUCTURES OR CHANDLER SIGNS	SEE X0.4	UNISTRUCTURES OR CHANDLER SIGNS	-	14'-6 1/2" L x 9'-0" H; See shop drawings for more information. Dark Bronze textured finish
X0.10	CLEARANCE TEXT	-	X	X	LANE OR FASHION	Larry Tolbert (705-545-7615) ltolbert@lanesupplyinc.com OR Jason Holmes (785-242-8111) jholmes@fashioninc.com	LANE OR FASHION	-	-



Chick-fil-A

Chick-fil-A
5200 Buffington Road
Atlanta, Georgia
30349-2998



CHIPMAN DESIGN ARCHITECTURE INC
1350 E TOUHY AVE
FIRST FLOOR EAST
DES PLAINES, IL 60018
TEL : 847.298.6900

I HEREBY CERTIFY THAT THESE PLANS HAVE BEEN PREPARED UNDER MY SUPERVISION AND THAT TO THE BEST OF MY KNOWLEDGE, THEY COMPLY WITH ALL RULES, REGULATIONS AND ORDINANCES OF PLAINFIELD, IN RELATING TO STRUCTURES AND BUILDINGS.

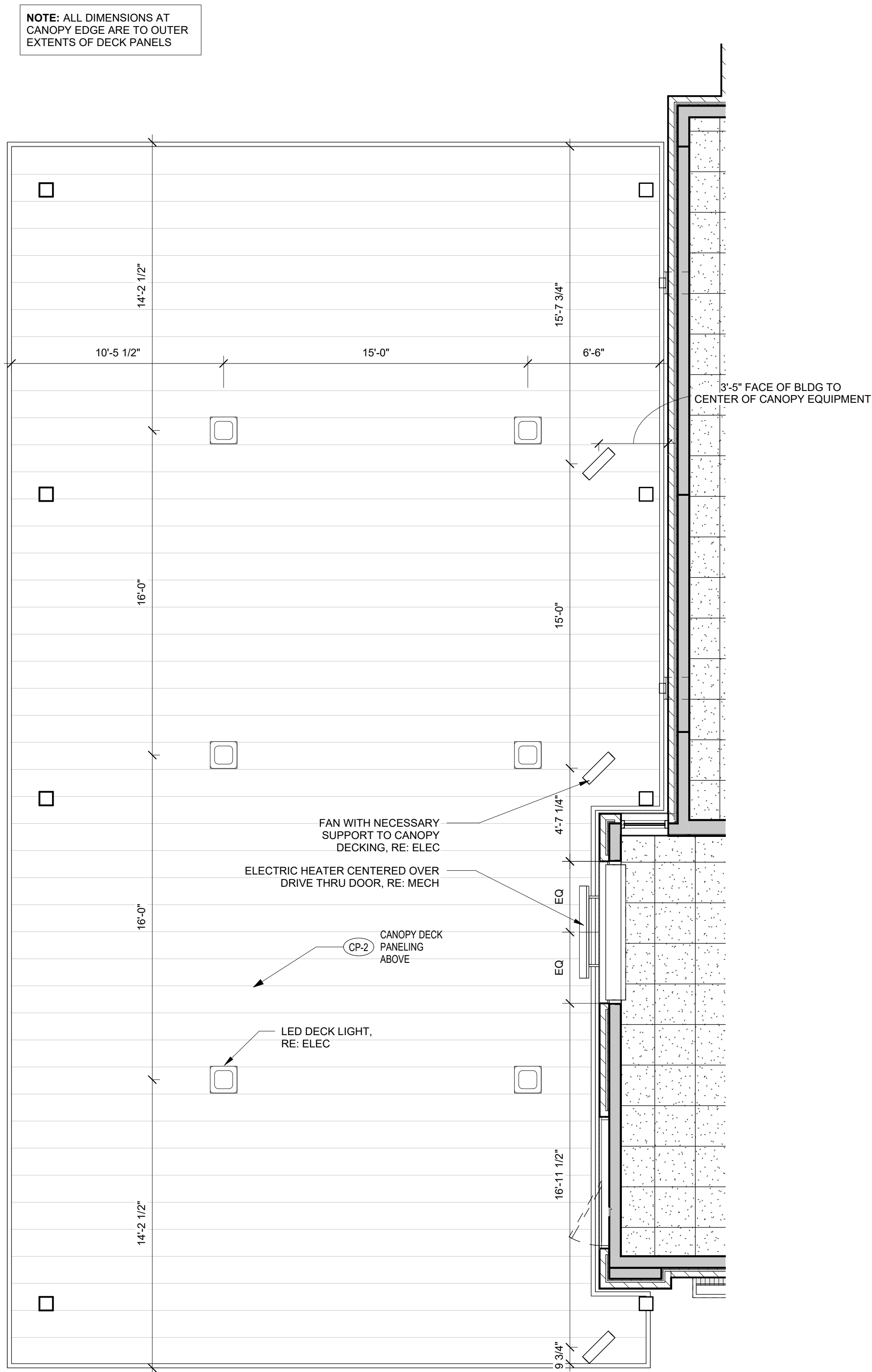
CHICK-FIL-A
I-70 & SR 267 FSU
6102 Cambridge Way
Plainfield, IN 46168

FSR#05219
BUILDING TYPE / SIZE: P14 SE LRG
RELEASE: 22.08

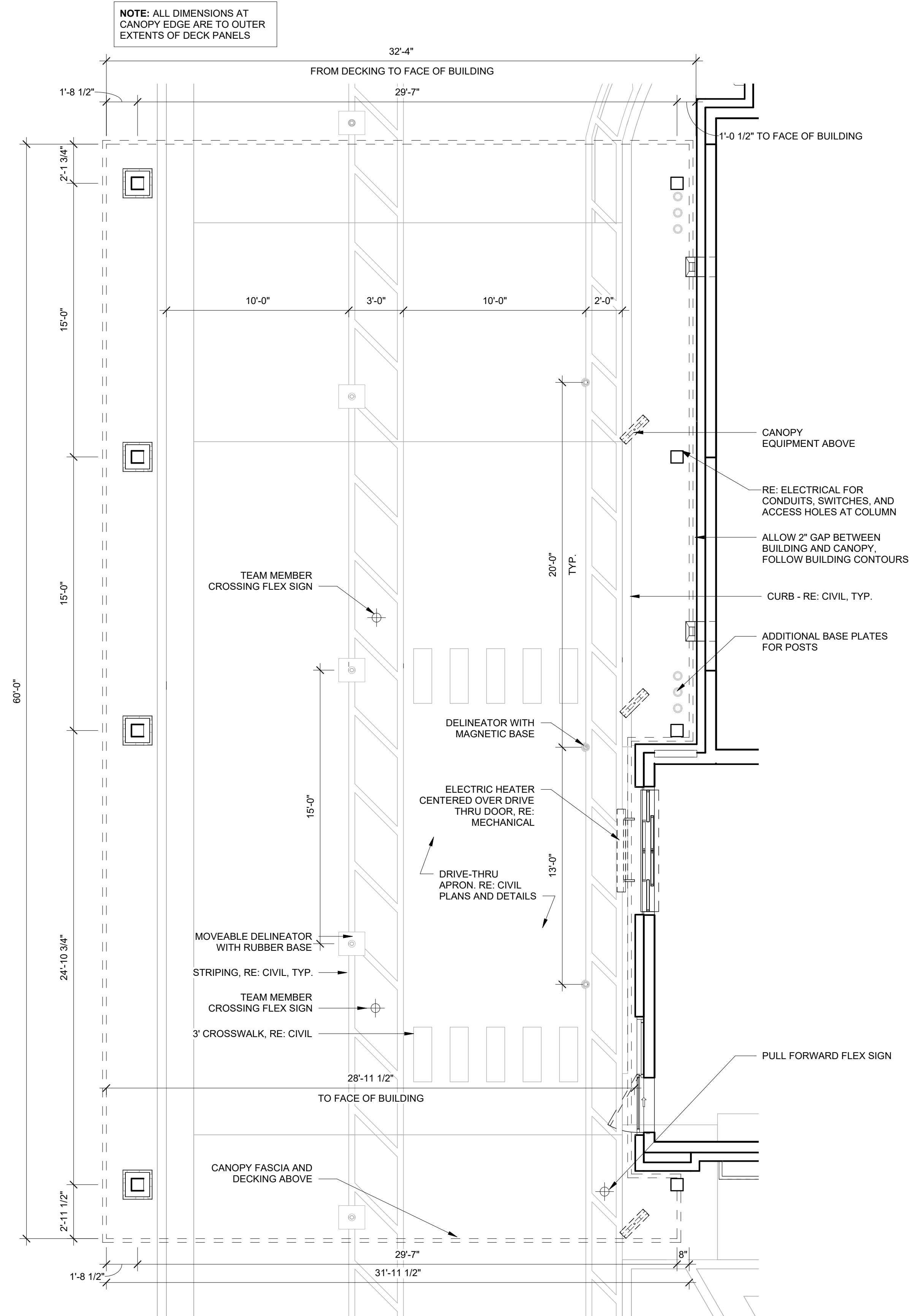
REVISION SCHEDULE		
NO.	DATE	DESCRIPTION

PRELIMINARY
CONSULTANT PROJECT # 22-2319.00
PRINTED FOR PRELIMINARY
DATE 03/20/23
DRAWN BY CB
CHECKED BY Checker
Information contained on this drawing and in digital files produced for above named project may not be reproduced in any manner without express written or verbal consent from authorized project representatives.
SHEET ORDER POINT CANOPY

SHEET NUMBER **A-104**



B4 OUTSIDE MEAL DELIVERY CANOPY REFLECTED CEILING PLAN
 1/4" = 1'-0"



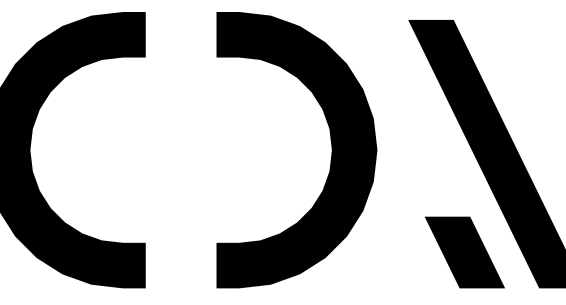
B2 OUTSIDE MEAL DELIVERY CANOPY PLAN
 1/4" = 1'-0"

NOTE:
 THIS SHEET IS FOR DESIGN REFERENCE ONLY. REFER TO CANOPY SHOP DRAWINGS FOR ENGINEERING DETAILS AND CALCULATIONS. SHOP DRAWINGS TO BE SUBMITTED FOR REVIEW BY GENERAL CONTRACTOR.



Chick-fil-A

Chick-fil-A
 5200 Buffington Road
 Atlanta, Georgia
 30349-2998



CHIPMAN DESIGN
 ARCHITECTURE INC
 1350 E TOUHY AVE
 FIRST FLOOR EAST
 DES PLAINES, IL 60018
 TEL : 847.298.6900

I HEREBY CERTIFY THAT THESE PLANS HAVE BEEN PREPARED UNDER MY SUPERVISION AND THAT TO THE BEST OF MY KNOWLEDGE, THEY COMPLY WITH ALL RULES, REGULATIONS AND ORDINANCES OF Plainfield, IN RELATING TO STRUCTURES AND BUILDINGS.

CHICK-FIL-A
I-70 & SR 267 FSU
 6102 Cambridge Way
 Plainfield, IN 46168

FSR#05219
 BUILDING TYPE / SIZE: P14 SE LRG
 RELEASE: 22.08

REVISION SCHEDULE		
NO.	DATE	DESCRIPTION

PRELIMINARY	
CONSULTANT PROJECT #	22-2319.00
PRINTED FOR	PRELIMINARY
DATE	03/20/23
DRAWN BY	CB
CHECKED BY	Checker
Information contained on this drawing and in all digital files produced for above named project may not be reproduced in any manner without express written or verbal consent from authorized project representatives.	
SHEET: OUTSIDE MEAL DELIVERY CANOPY	

SHEET NUMBER
A-105