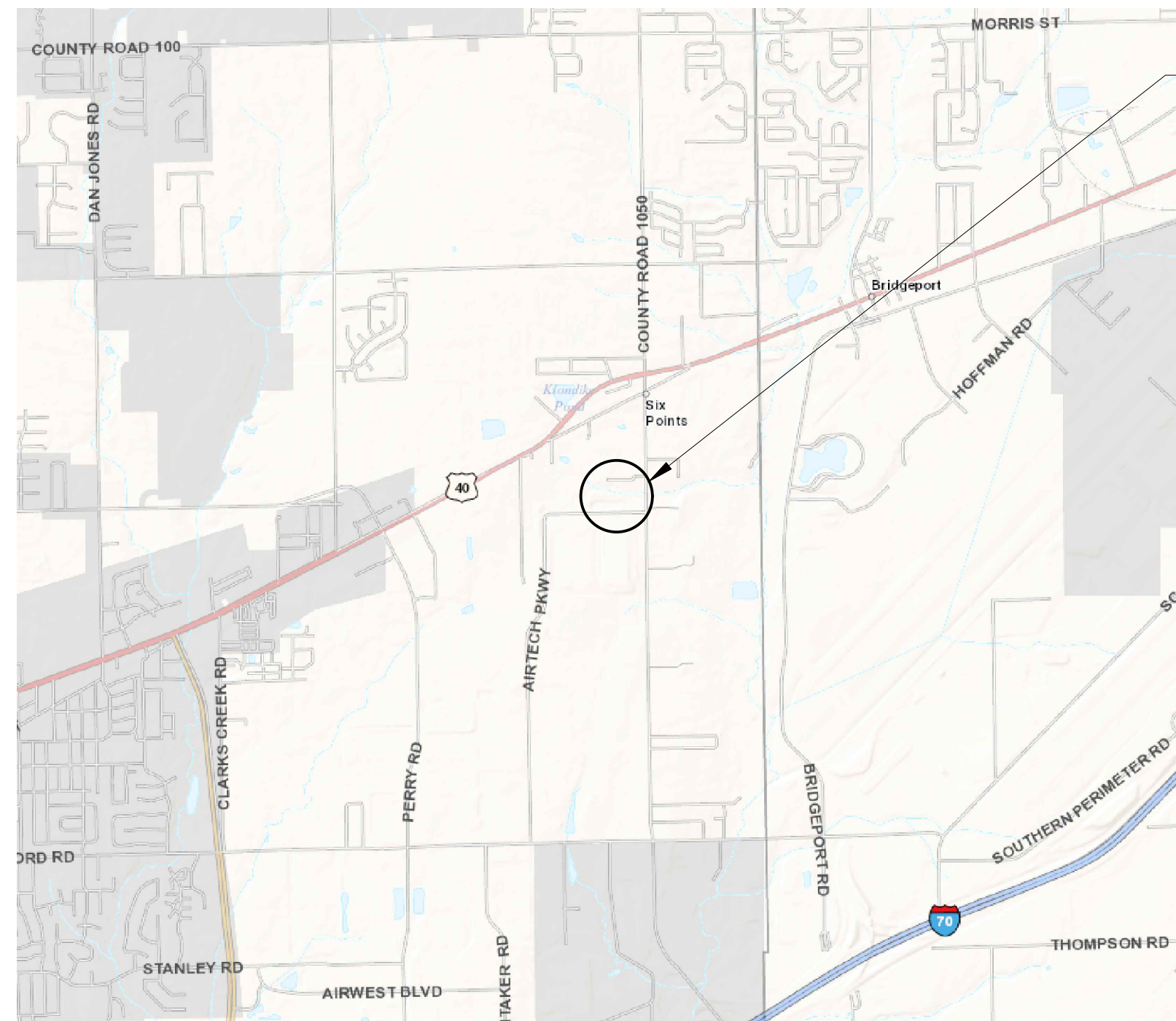


PRIMARY PLAT ROYAL TRANSPORTATION

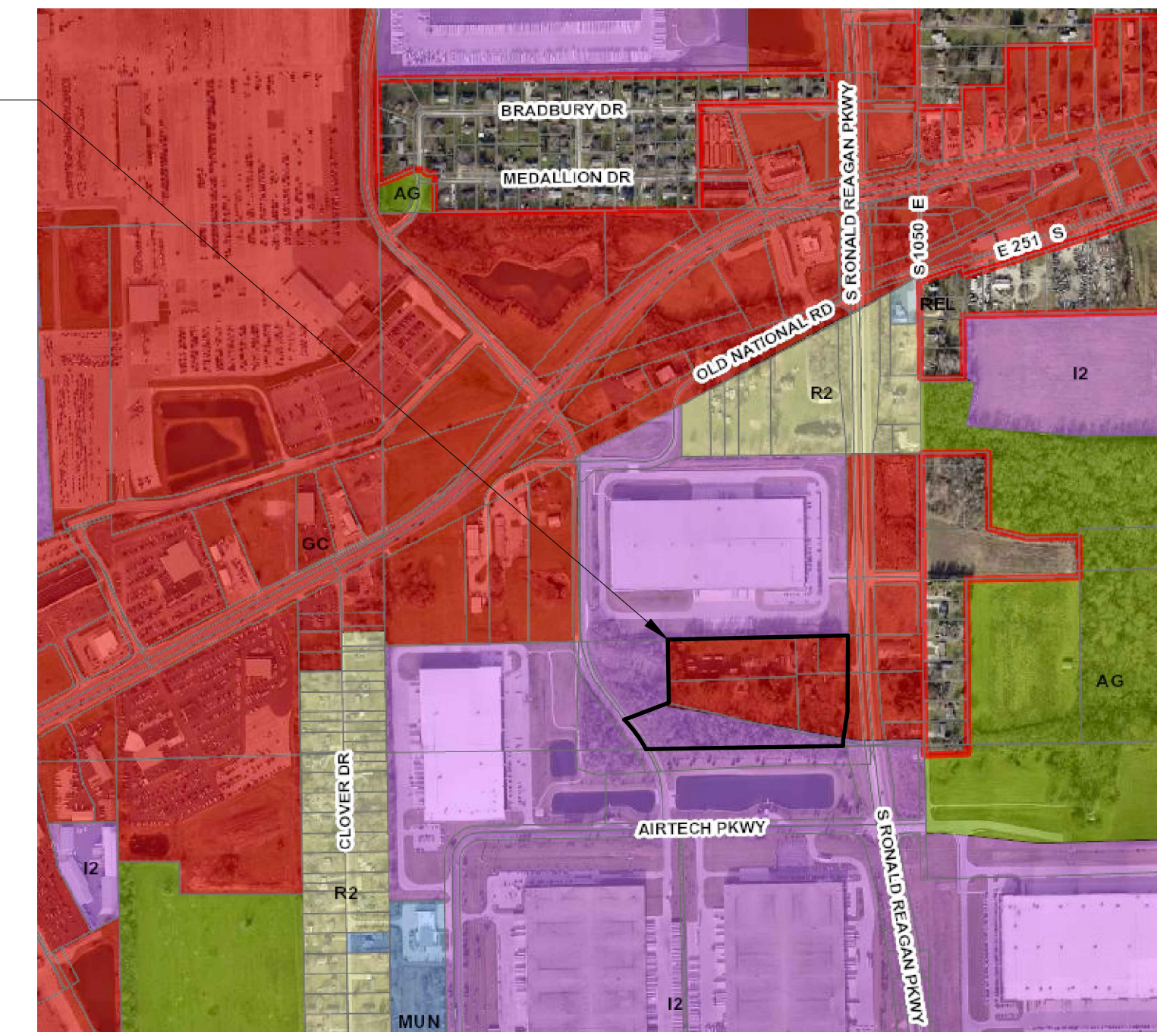
SW 1/4, SEC. 20 - T15N - R2E, HENDRICKS COUNTY, WASHINGTON TOWNSHIP, PLAINFIELD, INDIANA
PROJECT ADDRESSES: 2924,2938,2940,2942 S. RONALD REAGAN PARKWAY
ZONED: GC & R1

PLANS PREPARED FOR:
ROYAL TRANSPORTATION
2938 S. RONALD REAGAN PARKWAY
INDIANAPOLIS, IN 46231
(317)-777-1639
CONTACT: ANN BURKETT
EMAIL: annb.royallimo@yahoo.com



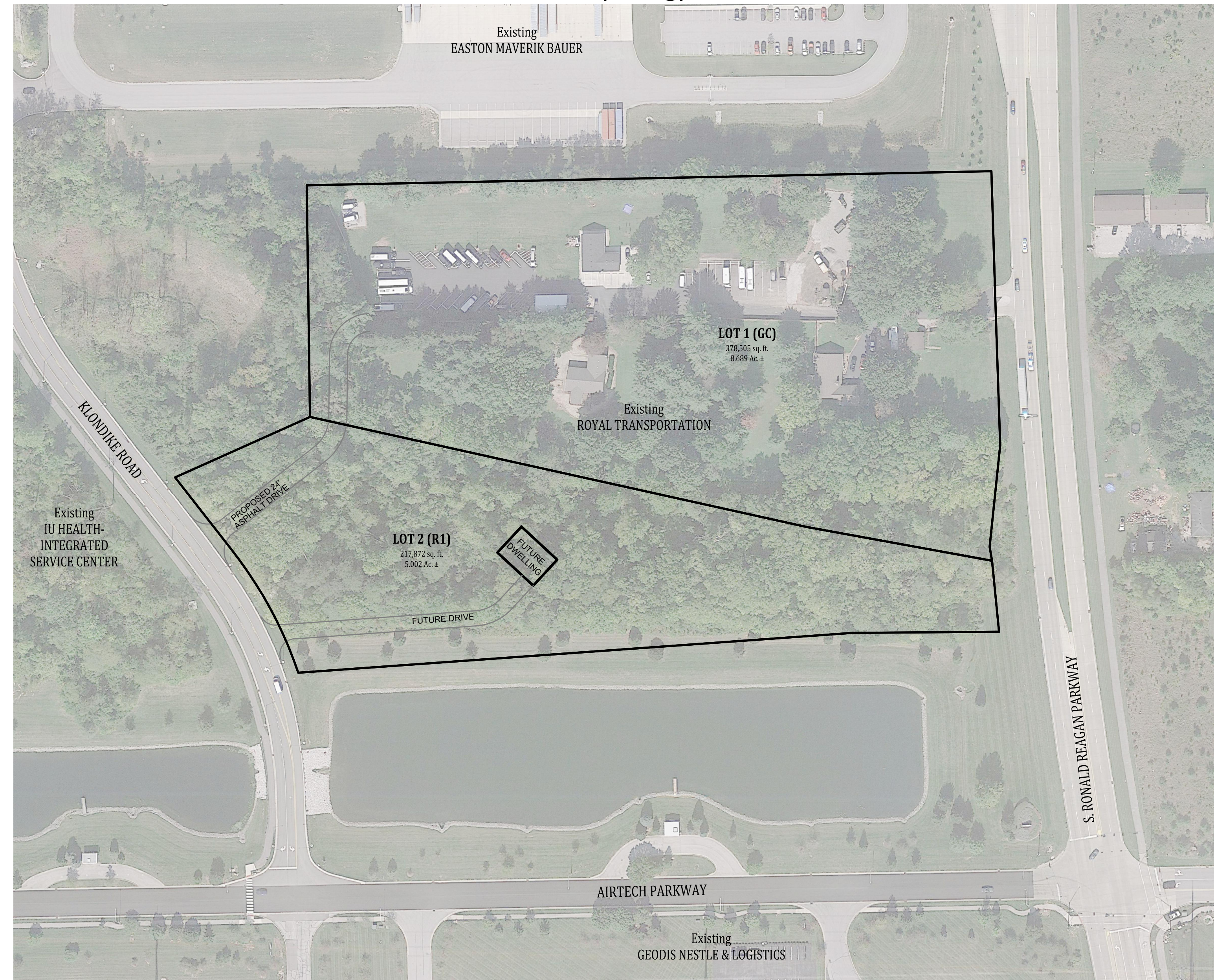
PROJECT LOCATION

VICINITY MAP
NO SCALE



PROJECT LOCATION

LOCATION MAP
NO SCALE



SITE MAP
SCALE: 1" = 100'

OPERATING AUTHORITIES

GAS Centerpoint Energy 1995 East Main St. Danville, IN 46112 317-718-3618	CABLE TELEVISION Bright House Networks 3030 Roosevelt Ave. Indianapolis, IN 46218 317632-9077	WATER Town of Plainfield 986 S. Center Street Plainfield, IN 46168 317-839-3490
ELECTRIC Duke Energy 390 N. Main Street Martinsville, IN 46151 765-349-4012	CABLE TELEVISION Comcast Cable 5330 E. 65th St. Indianapolis, IN 46220 317-872-2225	TELEPHONE AT&T 240 N. Meridian St. Indianapolis, IN 46204 317-265-3050
ELECTRIC AES Indiana 2102 N. Illinois Street Indianapolis, IN 46202 888-261-8222	STORM Town of Plainfield 986 S. Center Street Plainfield, IN 46168 317-839-3490	FIRE DEPARTMENT Plainfield Fire Territory 591 Moon Road Plainfield, IN 46168 317-839-6939
FIBER OPTIC MCI 400 Internation Pkwy Richardson, TX 75081 469-886-4238	SANITARY Town of Plainfield 986 S. Center Street Plainfield, IN 46168 317-839-3490	FIBER OPTIC TCS Communications, LLC 4355 Lafayette Blvd. Indianapolis, IN 46254 812-623-1233
SCHOOL DISTRICT Plainfield Community School Corporation 985 S. Longfellow Lane Plainfield, IN 46168 317-839-2578	SCHOOL DISTRICT Avon Community School Corporation 7203 East U.S. Highway 36 Avon, IN 46123 317-544-6000	

PLANS PREPARED BY:
BANNING ENGINEERING
853 COLUMBIA ROAD, SUITE #101
PLAINFIELD, IN 46168
BUS: (317) 707-3700, FAX: (317) 707-3800
E-MAIL: Banning@BanningEngineering.com
WEB: www.BanningEngineering.com
CONTACT: RYAN LINDLEY
EMAIL: rlindley@banning-eng.com

NOT FOR CONSTRUCTION

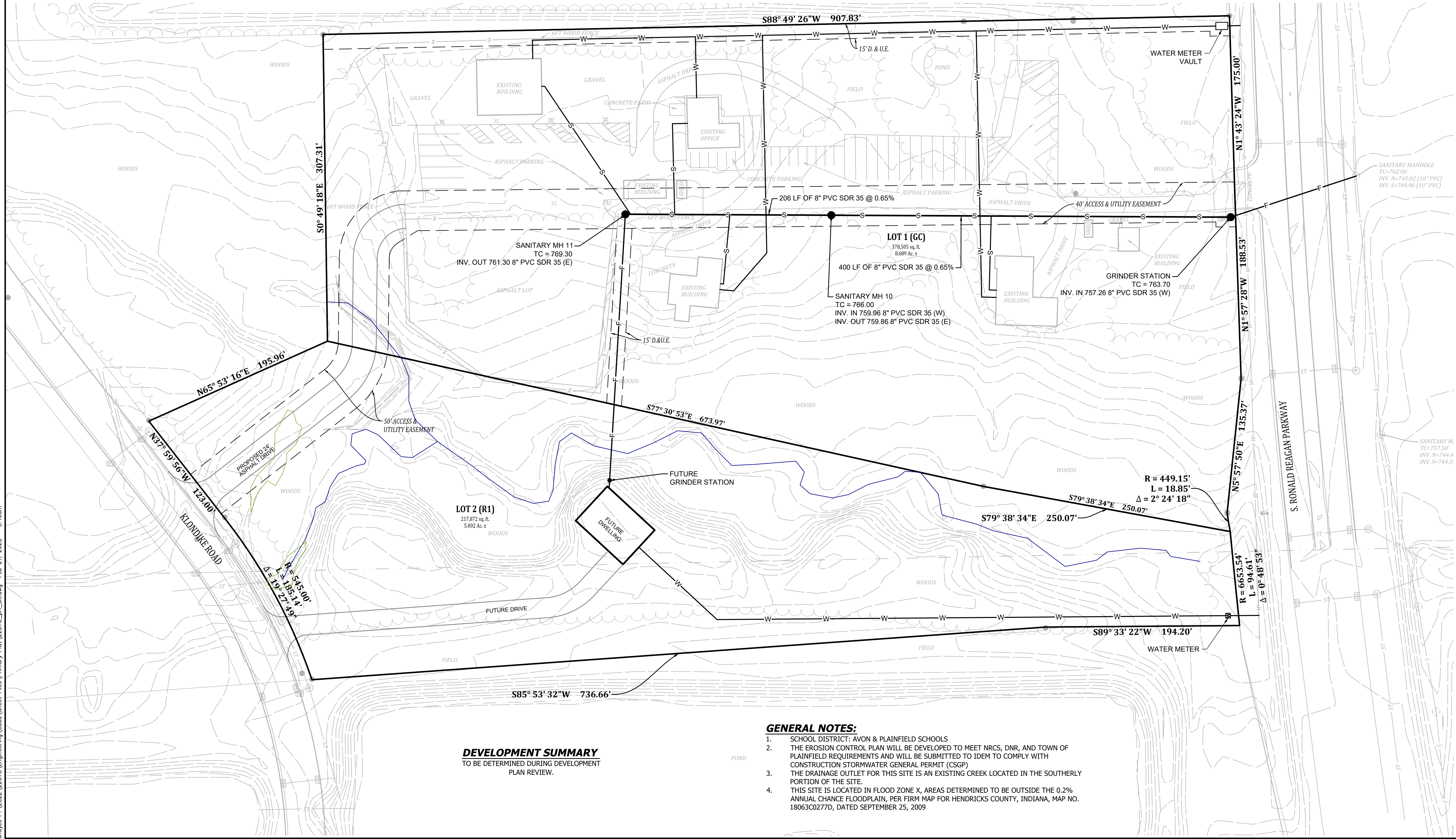
CERTIFIED BY: _____

REVISIONS			SHEET INDEX	
NUMBER	DESCRIPTION	DATE	SHEET NO	DESCRIPTION
			C100	TITLE SHEET
			C101	PRIMARY PLAT
			C102	PLAT LIKE EXHIBIT

Date:	00-00-2022
Project No:	22078
Sheet No:	C100



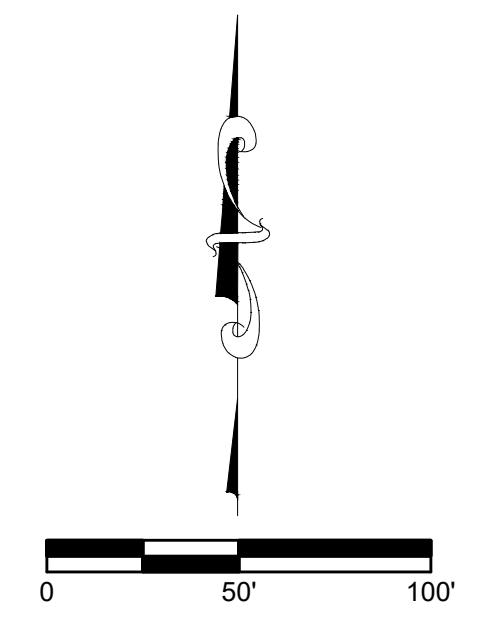
P:\2022\22078\Engineering\Cadd\Sheet Files\Primary Plat\22078_plat.dwg Feb 21, 2023 - 9:16am



- LEGEND**
EXISTING
- ST — STORM SEWER
 - S — SANITARY SEWER
 - W — WATER LINE
 - OHU — OVERHEAD UTILITIES
 - T — TELEPHONE LINE
 - X — FENCE LINE
 - ⊙ — STORM MANHOLE
 - ⊞ — STORM INLETS
 - ⊕ — SANITARY MANHOLE
 - ⊗ — LIGHT POLE
 - ⊠ — ELECTRIC METER
 - ⌋ — TREE LINE
- LEGEND**
PROPOSED
- S — SANITARY SEWER
 - F — FORCE MAIN
 - W — WATER MAIN
 - — SANITARY MANHOLE

DEVELOPMENT SUMMARY
TO BE DETERMINED DURING DEVELOPMENT PLAN REVIEW.

- GENERAL NOTES:**
- SCHOOL DISTRICT: AVON & PLAINFIELD SCHOOLS
 - THE EROSION CONTROL PLAN WILL BE DEVELOPED TO MEET NRCS, DNR, AND TOWN OF PLAINFIELD REQUIREMENTS AND WILL BE SUBMITTED TO IDEM TO COMPLY WITH CONSTRUCTION STORMWATER GENERAL PERMIT (CSGP)
 - THE DRAINAGE OUTLET FOR THIS SITE IS AN EXISTING CREEK LOCATED IN THE SOUTHERLY PORTION OF THE SITE.
 - THIS SITE IS LOCATED IN FLOOD ZONE X, AREAS DETERMINED TO BE OUTSIDE THE 0.2% ANNUAL CHANCE FLOODPLAIN, PER FIRM MAP FOR HENDRICKS COUNTY, INDIANA, MAP NO. 18063C0277D, DATED SEPTEMBER 25, 2009



Designated	Sym.	Revisions	Date
Drawn: S.J.H.			
Checked:			
Scale: 1"=50'			
Date: 02-09-2022			

PRIMARY PLAT
ROYAL TRANSPORTATION
WASHINGTON TOWNSHIP
PLAINFIELD, INDIANA

NOT FOR CONSTRUCTION

BANNING ENGINEERING
 853 COLUMBIA ROAD, SUITE #101
 PLAINFIELD, IN 46169
 BUS: (317) 707-3700 FAX: (317) 707-3800
 E-MAIL: Banning@BanningEngineering.com
 WEB: www.BanningEngineering.com

