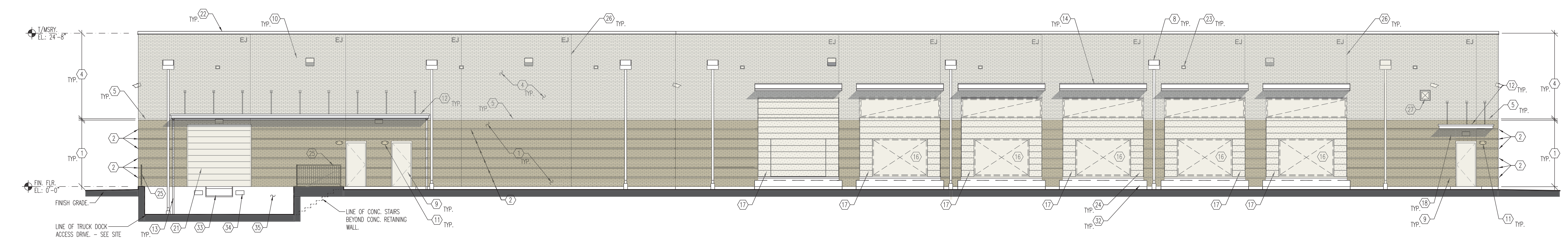


1 SOUTH ELEVATION
SCALE: 1/8" = 1'-0"



2 WEST ELEVATION
SCALE: 1/8" = 1'-0"



NOTE:
THE GENERAL CONTRACTOR SHALL CLOSELY COORDINATE THE LOCATION OF THE DOWNSPOUTS W/ UNDERGROUND STORM WATER DRAINAGE TIE-IN POINTS. - SEE SHEET A101 AND DET. 2/A530. - CORRECTIVE OFFSETS WITHIN THE DOWNSPOUTS AT TIE-IN LOCATIONS WILL NOT BE ACCEPTABLE AND WILL REQUIRE CORRECTIVE MEASURES AT CONTRACTOR EXPENSE.

SHEET NOTES		KEY NOTES	
1. COORDINATE ALL OPENING SIZES WITH APPLICABLE TRADES AND FINAL APPROVED SUBMITTALS PRIOR TO CONSTRUCTING NEW WALLS.		1. FACE BRICK VENEER - MODULAR BRICK 3 5/8" x 2 1/4" x 7 5/8" IN RUNNING BOND - COLOR No. 2.	13. CANOPY DOWNSPOUT. - SEE DETAILS, SHT. A536.
		2. FACE BRICK VENEER - MODULAR BRICK 3 5/8" x 2 1/4" x 7 5/8" IN RUNNING BOND - COLOR No. 2 - ACCENT COURSE, RECESSED 1/2"	14. PREFABRICATED GALV. STEEL RAIN HOOD W/ INTEGRAL GUTTER, 3'-0" x 14'-0" LONG. - TYP. AT EACH MASONRY OPENING FOR NEW AND FUTURE DUCTWORK PORTALS. - SEE DET. 5/A536
		3. CONT. CAST STONE SILL AND BELT COURSE TYPE "A" - SEE WALL SECTION DETAIL 2/A330 AND DETAIL 3/A533. - SEE ALSO CAST STONE PROFILE DETAILS SHT. A533.	15. OUTLINE OF MECH. EQUIPMENT. - SEE MECH. DWGS.
		4. FACE BRICK VENEER - MODULAR BRICK 3 5/8" x 2 1/4" x 7 5/8" IN RUNNING BOND - COLOR No. 1	16. MECH. DUCTWORK OPENING. - SEE MECH. DWGS & WALL SECTION 1/A330.
		5. CONT. CAST STONE BELT COURSE TYPE "B". - SEE CAST STONE PROFILE DETAILS SHT. A533.	17. PREFINISHED METAL INFILL PANELS. - PROVIDE REMOVABLE METAL PANEL ASSEMBLY FOR FUTURE DUCT OPENINGS. - SEE DETAILS SHT. A532 AND WALL SECTION DETAIL 3/A330.
		6. FACE BRICK VENEER ACCENT PATTERN. - MODULAR BRICK 3 5/8" x 2 1/4" x 7 5/8" - COLOR No. 3.	18. WALL-MOUNTED EXTERIOR LIGHT. - SEE ELEC. DWGS.
		7. CAST STONE HEADER COURSE, TYPE "C". - SEE DETAIL 1/A533 AND CAST STONE PROFILE DETAILS SHT. A533.	19. ALUM. STOREFRONT GLAZING SYSTEM. - SEE WINDOW SCHED., SHT. A603 AND DETAILS 1-3/A533
		8. PREFINISHED METAL SCUPPER WITH MTL. CONDUCTOR HEAD. - SEE DET. 7/A510 & 3/A511.	20. ALUM. STOREFRONT DOOR. - SEE DOOR SCHED., SHTS. A601A & A601B
		9. INSULATED H.M. DOOR (PTD). - SEE DOOR SCHED., SHTS. A601A & A601B.	21. INSULATED SECTIONAL OVERHEAD DOOR. - SEE DOOR SCHED., SHTS. A601A & A601B
		10. WALL PACK LIGHT FIXTURE. - SEE ELEC. DWGS.	22. PREFINISHED ALUM. COPING SYSTEM. - SEE DET. 6/A510 & 1/A511.
		11. SELF CONTAINED WALL-MOUNTED EXTERIOR EMERGENCY LIGHT FIXTURE. - TYP. AT EACH EXTERIOR DOOR. - SEE ELEC. DWGS.	23. OVERFLOW SCUPPER. - SEE DET. 7 & 8/A510.
		12. PREFIN. ALUM. CANOPY. - SEE DETAILS SHT. A536.	24. PREFIN. MTL. DOWNSPOUT LEADER. - SEE DETAILS 2/A530 & 3/A511.
			25. GALV. STL. PIPE GUARDRAIL W/ BALLUSTERS AT 4" O.C. - PTD.
			26. VERT. MASONRY EXPANSION JOINT. (EJ) - SEE DET. 9/A511
			27. DUCT PENETRATION THROUGH EXTERIOR MASONRY CAVITY WALL. - SEE MECH. DWGS AND DET. 4/A532. - COORDINATE W/ M.C.
			28. PREFIN. METAL LOUVER. - SEE MECH. DRAWINGS, DETAILS 4 & 5/A531 AND OPENING SCHEDULE SHT. A602.
			29. PREFIN. METAL SILL FLASHING. - SEE DET. 6/A531.
			30. PREFIN. METAL SCUPPER AND CONDUCTOR HEAD WITH (2) 4" x 6" DOWNSPOUTS. - PROVIDE 2'-8" WIDE x 1'-4" DEEP CONDUCTOR HEAD SIMILAR TO DET. 3/A511. - THROUGH WALL SCUPPER OPENING SHALL BE 2'-0" x 0'-8" HIGH SIMILAR TO DET. 7/A510 AND 3/A511.
			31. PIPING PORTAL. - SEE DETAIL 8/A532 AND MECHANICAL PIPING PLANS
			32. DOWNSPOUT BOOT. - CONNECTED TO STORM DRAINAGE. - SEE DET. 2/A530 & CIVIL DWGS.
			33. DOCK LEVELER. - SEE WALL SECTION DETAIL 2/A331
			34. DOCK BUMPER GUARDS - SEE SPECIFICATION SECTION 11 1319.
			35. EXPOSED CONC. FOUNDATION WALL. - SEE STRUCT. DWGS.
			36. PREFINISHED ENTRANCE CANOPY. - SEE DETAIL 1/A320.
			37. SECURITY CAMERA. - SEE SECURITY DRAWINGS.

REV	DESCRIPTION	DATE
1	-	XXXXXXXX
2	-	XXXXXXXX
3	-	XXXXXXXX
4	-	XXXXXXXX
5	-	XXXXXXXX
6	-	XXXXXXXX
7	-	XXXXXXXX
8	-	XXXXXXXX
9	-	XXXXXXXX

NETWORK COMPLIANCE SUBMITTALS	DATE
PRELIMINARY SUBMISSION	10/1/21
30% SUBMISSION	XXXXXXXX
60% SUBMISSION	12/01/21
90% SUBMISSION	XXXXXXXX
100% SUBMISSION	3/25/22
CONSTRUCTION DESIGN SUBMISSION	XXXXXXXX
RECORD SET (AS-BUILTS)	XXXXXXXX

PROJECT NO: 2137	STAMP
CAD DWG FILE:	
DESIGNED BY: PM	
DRAWN BY: JT	
CHECKED BY: PM	
COPYRIGHT:	

SHEET TITLE
BUILDING ELEVATIONS

SHEET NUMBER
A211