



# WEDGE4 LED

## Architectural Wall Sconce



Catalog Number

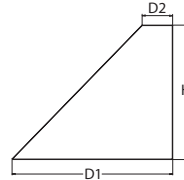
Notes

Type

Hit the Tab key or mouse over the page to see all interactive elements.

### Specifications

**Depth (D1):** 10"  
**Depth (D2):** 2"  
**Height:** 9"  
**Width:** 25"  
**Weight:** 30.5 lbs  
 (without options)



### Introduction

The WEDGE LED family is designed to meet specifier's every wall-mounted lighting need in a widely accepted shape that blends with any architecture. The clean rectilinear design comes in four sizes with lumen packages ranging from 1,200 to 25,000 lumens, providing a true site-wide solution. Embedded with nLight® AIR wireless controls, the WEDGE family provides additional energy savings and code compliance.

WEDGE4 has been designed to deliver up to 25,000 lumens through a precision refractive lens with wide distribution, perfect for augmenting the lighting from pole mounted luminaires.

### WEDGE LED Family Overview

Luminaire	Standard EM, 0°C	Cold EM, -20°C	Sensor	Lumens (4000K)					
				P1	P2	P3	P4	P5	P6
WEDGE1 LED	4W	--	--	1,200	2,000	--	--	--	--
WEDGE2 LED	10W	18W	Standalone / nLight	1,200	2,000	3,000	4,500	6,000	--
WEDGE3 LED	15W	18W	Standalone / nLight	7,500	8,500	10,000	12,000	--	--
WEDGE4 LED	--	--	Standalone / nLight	12,000	16,000	18,000	20,000	22,000	25,000

### Ordering Information

**EXAMPLE: WEDGE4 LED P3 40K 70CRI R3 MVOLT SRM DDBXD**

Series	Package	Color Temperature	CRI	Distribution	Voltage	Mounting
WEDGE4 LED	P1	P4	30K 3000K	70CRI	MVOLT	<b>Shipped included</b> SRM Surface mounting bracket
	P2	P5	40K 4000K	80CRI		
	P3	P6	50K 5000K			
				R2 Type 2 R3 Type 3 R4 Type 4 RFT Forward Throw	347 <sup>1</sup> 480 <sup>1</sup>	<b>Shipped separately</b> AWS 3/8inch Architectural wall spacer PBBW Surface-mounted back box (top, left, right conduit entry). Use when there is no junction box available.

Options	Finish
<p>PE<sup>2</sup> Photocell, Button Type</p> <p>DS<sup>3</sup> Dual switching (comes with 2 drivers and 2 light engines)</p> <p>DMG<sup>3</sup> 0-10V dimming wires pulled outside fixture (for use with an external control, ordered separately)</p> <p>BCE Bottom conduit entry for back box (PBBW). Total of 4 entry points.</p> <p>SPD10KV 10kV Surge pack</p> <p><b>Standalone Sensors/Controls</b></p> <p>PIR Bi-level (100/35%) motion sensor for 8-15' mounting heights. Intended for use on switched circuits with external dusk to dawn switching.</p> <p>PIRH Bi-level (100/35%) motion sensor for 15-30' mounting heights. Intended for use on switched circuits with external dusk to dawn switching</p> <p>PIR1FC3V Bi-level (100/35%) motion sensor for 8-15' mounting heights with photocell pre-programmed for dusk to dawn operation.</p> <p>PIRH1FC3V Bi-level (100/35%) motion sensor for 15-30' mounting heights with photocell pre-programmed for dusk to dawn operation.</p> <p><b>Networked Sensors/Controls</b></p> <p>NLTAIR2 PIR nLightAIR Wireless enabled bi-level motion/ambient sensor for 8-15' mounting heights.</p> <p>NLTAIR2 PIRH nLightAIR Wireless enabled bi-level motion/ambient sensor for 15-30' mounting heights.</p> <p>See page 3 for out of box functionality</p>	<p>DDBXD Dark bronze</p> <p>DBLXD Black</p> <p>DNAXD Natural aluminum</p> <p>DWHXD White</p> <p>DSSXD Sandstone</p> <p>DDBTXD Textured dark bronze</p> <p>DBLBXD Textured black</p> <p>DNATXD Textured natural aluminum</p> <p>DWHGXD Textured white</p> <p>DSSTXD Textured sandstone</p>

### Accessories

Ordered and shipped separately.

WDGEAWS DDBXD WEDGE 3/8inch Architectural Wall Spacer (specify finish)  
 WDGE4PBBW DDBXD U WEDGE4 surface-mounted back box (specify finish)

### NOTES

- 347V and 480V not available with DS.
- PE not available in 480V and with sensors/controls.
- DS and DMG not available with sensors/controls.
- Not qualified for DLC. Not available with emergency battery backup.



COMMERCIAL OUTDOOR

One Lithonia Way • Conyers, Georgia 30012 • Phone: 1-800-705-SERV (7378) • [www.lithonia.com](http://www.lithonia.com)  
 © 2019-2021 Acuity Brands Lighting, Inc. All rights reserved.

WEDGE4 LED  
 Rev. 08/23/21

## Performance Data

### Lumen Output

Lumen values are from photometric tests performed in accordance with IESNA LM-79-08. Data is considered to be representative of the configurations shown, within the tolerances allowed by Lighting Facts. Contact factory for performance data on any configurations not shown here.

Performance Package	System Watts	Dist. Type	30K (3000K, 70 CRI)					40K (4000K, 70 CRI)					50K (5000K, 70 CRI)				
			Lumens	LPW	B	U	G	Lumens	LPW	B	U	G	Lumens	LPW	B	U	G
P1	77W	R2	11,173	146	2	0	1	12,125	158	2	0	1	12,125	158	2	0	1
		R3	10,951	143	2	0	2	11,884	155	2	0	2	11,884	155	2	0	2
		R4	11,224	147	2	0	2	12,180	159	2	0	2	12,180	159	2	0	2
		RFT	11,104	145	2	0	2	12,050	157	2	0	2	12,050	157	2	0	2
P2	106W	R2	14,960	141	3	0	2	16,235	153	3	0	2	16,235	153	3	0	2
		R3	14,663	138	2	0	2	15,912	150	2	0	3	15,912	150	2	0	3
		R4	15,028	141	2	0	2	16,308	153	2	0	3	16,308	153	2	0	3
		RFT	14,868	140	2	0	2	16,134	152	2	0	2	16,134	152	2	0	2
P3	123W	R2	16,993	138	3	0	2	18,441	150	3	0	2	18,441	150	3	0	2
		R3	16,655	136	2	0	3	18,074	147	3	0	3	18,074	147	3	0	3
		R4	17,070	139	2	0	3	18,524	151	3	0	3	18,524	151	3	0	3
		RFT	16,888	138	2	0	3	18,327	149	2	0	3	18,327	149	2	0	3
P4	140W	R2	18,958	136	3	0	2	20,573	147	3	0	2	20,573	147	3	0	2
		R3	18,581	133	3	0	3	20,164	144	3	0	3	20,164	144	3	0	3
		R4	19,044	136	3	0	3	20,667	148	3	0	3	20,667	148	3	0	3
		RFT	18,841	135	2	0	3	20,446	146	3	0	3	20,446	146	3	0	3
P5	156W	R2	20,919	134	3	0	2	22,702	146	3	0	2	22,702	146	3	0	2
		R3	20,503	132	3	0	3	22,250	143	3	0	3	22,250	143	3	0	3
		R4	21,014	135	3	0	3	22,804	147	3	0	4	22,804	147	3	0	4
		RFT	20,790	134	3	0	3	22,561	145	3	0	3	22,561	145	3	0	3
P6	185W	R2	23,725	128	3	0	2	25,746	139	3	0	2	25,746	139	3	0	2
		R3	23,253	126	3	0	4	25,234	136	3	0	4	25,234	136	3	0	4
		R4	23,832	129	3	0	4	25,863	140	3	0	4	25,863	140	3	0	4
		RFT	23,578	127	3	0	3	25,587	138	3	0	4	25,587	138	3	0	4

### Electrical Load

Performance Package	System Watts	Current (A)					
		120V	208V	240V	277V	347V	480V
P1	77W	0.635	0.366	0.319	0.280	0.223	0.161
P2	106W	0.889	0.514	0.449	0.395	0.309	0.228
P3	123W	1.014	0.585	0.510	0.447	0.356	0.258
P4	140W	1.159	0.668	0.582	0.509	0.403	0.294
P5	156W	1.296	0.743	0.647	0.564	0.451	0.326
P6	185W	1.512	0.864	0.751	0.655	0.526	0.378

### Lumen Multiplier for 80CRI

CCT	Multiplier
30K	0.891
40K	0.906
50K	0.906

### Lumen Ambient Temperature (LAT) Multipliers

Use these factors to determine relative lumen output for average ambient temperatures from 0-40°C (32-104°F).

Ambient	Lumen Multiplier
0°C / 32°F	1.05
10°C / 50°F	1.03
20°C / 68°F	1.01
25°C / 77°F	1.00
30°C / 86°F	0.99
40°C / 104°F	0.97

### Projected LED Lumen Maintenance

Data references the extrapolated performance projections for the platforms noted in a 25°C ambient, based on 10,000 hours of LED testing (tested per IESNA LM-80-08 and projected per IESNA TM-21-11).

To calculate LLF, use the lumen maintenance factor that corresponds to the desired number of operating hours below. For other lumen maintenance values, contact factory.

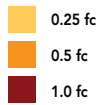
Operating Hours	0	25,000	50,000	100,000
Lumen Maintenance Factor	1.0	>0.98	>0.96	>0.92



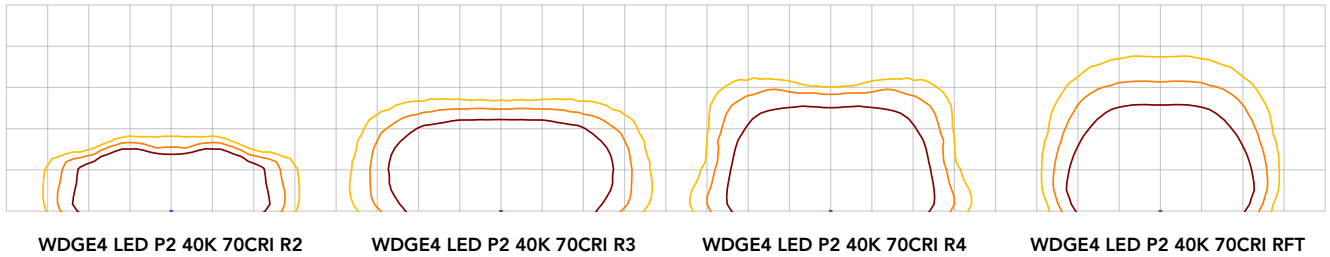
## Photometric Diagrams

To see complete photometric reports or download .ies files for this product, visit the Lithonia Lighting WDGE LED homepage. Tested in accordance with IESNA LM-79 and LM-80 standards.

### LEGEND



MH = 18ft  
Grid = 18ft x 18ft



## Control / Sensor Options

### Motion/Ambient Sensor (PIR\_, PIRH\_)

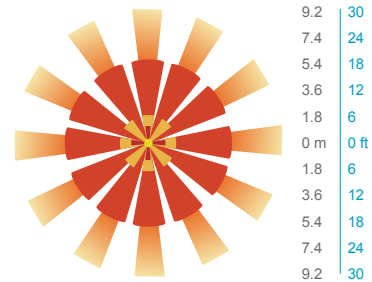
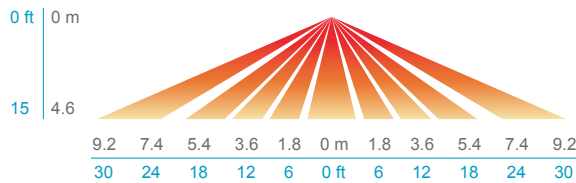
Motion/Ambient sensor (Sensor Switch MSOD) is integrated into the the luminaire. The sensor provides both Motion and Daylight based dimming of the luminaire. For motion detection, the sensor utilizes 100% Digital Passive Infrared (PIR) technology that is tuned for walking size motion while preventing false tripping from the environment. The integrated photocell enables additional energy savings during daytime periods when there is sufficient daylight. Optimize sensor coverage by either selecting PIR or PIRH option. PIR option comes with a sensor lens that is optimized to provide maximum coverage for mounting heights between 8-15ft, while PIRH is optimized for 15-40ft mounting height.

### Networked Control (NLTAIR2)

nLight® AIR is a wireless lighting controls platform that allows for seamless integration of both indoor and outdoor luminaires. Five-tier security architecture, 900 MHz wireless communication and app (CLAIRITY™ Pro) based configurability combined together make nLight® AIR a secure, reliable and easy to use platform.

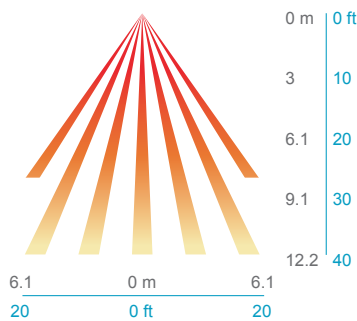
#### PIR

##### HIGH VIEW

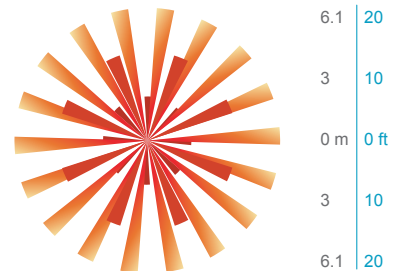


#### PIRH

##### SIDE VIEW



##### TOP VIEW

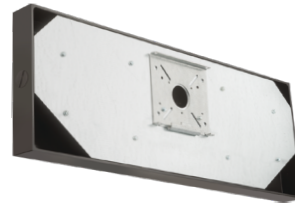


Option	Dim Level	High Level (when triggered)	Photocell Operation	Motion Time Delay	Ramp-down Time	Ramp-up Time
PIR or PIRH	Motion - 3V (37% of full output) Photocell - 0V (turned off)	10V (100% output)	Enabled @ 5fc	5 min	5 min	Motion - 3 sec Photocell - 45 sec
PIR1FC3V, PIRH1FC3V	Motion - 3V (37% of full output) Photocell - 0V (turned off)	10V (100% output)	Enabled @ 1fc	5 min	5 min	Motion - 3 sec Photocell - 45 sec
NLTAIR2 PIR, NLTAIR2 PIRH (out of box)	Motion - 3V (37% of full output) Photocell - 0V (turned off)	10V (100% output)	Enabled @ 5fc	7.5 min	5 min	Motion - 3 sec Photocell - 45 sec



**NLTAIR2 PIR – nLight AIR  
Motion/Ambient Sensor**

D = 10"  
H = 11"  
W = 25"



**PBBW – Surface-Mounted Back Box  
Use when there is no junction box available.**

D = 1.75"  
H = 9"  
W = 25"



**AWS – 3/8inch Architectural Wall Spacer**

D = 0.38"  
H = 4.4"  
W = 7.5"

### FEATURES & SPECIFICATIONS

#### INTENDED USE

Common architectural look, with clean rectilinear shape, of the WEDGE LED was designed to blend with any type of construction, whether it be tilt-up, frame or brick. Applications include commercial offices, warehouses, hospitals, schools, malls, restaurants, and other commercial buildings.

#### CONSTRUCTION

The single-piece die-cast aluminum housing to optimize thermal transfer from the light engine and promote long life. The driver is mounted in direct contact with the casting for a low operating temperature and long life. The die-cast door frame is fully gasketed with a one-piece solid silicone gasket to keep out moisture and dust, providing an IP66 rating for the luminaire.

#### FINISH

Exterior painted parts are protected by a zinc-infused Super Durable TGIC thermoset powder coat finish that provides superior resistance to corrosion and weathering. A tightly controlled multi-stage process ensures a 3 mils thickness for a finish that can withstand extreme climate changes without cracking or peeling. Standard Super Durable colors include dark bronze, black, natural aluminum, sandstone and white. Available in textured and non-textured finishes.

#### OPTICS

Individually formed acrylic lenses are engineered for superior application efficiency which maximizes the light in the areas where it is most needed. Light engines are available in 3000 K, 4000 K or 5000 K configurations. The WEDGE LED has zero uplight and qualifies as a Nighttime Friendly™ product, meaning it is consistent with the LEED® and Green Globes™ criteria for eliminating wasteful uplight.

#### ELECTRICAL

Light engine consists of high-efficacy LEDs mounted to metal-core circuit boards to maximize heat dissipation and promote long life (up to L92/100,000 hours at 25°C). The electronic driver has a power factor of >90%, THD <20%. Luminaire comes with built in 6kV surge protection, which meets a minimum Category C low exposure (per ANSI/IEEE C62.41.2).

#### INSTALLATION

A universal mounting plate with integral mounting support arms allows the fixture to hinge down for easy access while making wiring connections. The 3/8" Architectural Wall Spacer (AWS) can be used to create a floating appearance or to accommodate small imperfections in the wall surface. The ICW option can be used to mount the luminaire inverted for indirect lighting in dry and damp locations. Design can withstand up to a 1.5 G vibration load rating per ANSI C136.31.

#### LISTINGS

CSA certified to U.S. and Canadian standards. Light engines are IP66 rated; luminaire is IP65 rated. PIR options are rated for wet location. Rated for -40°C minimum ambient. DesignLights Consortium® (DLC) Premium qualified product and DLC qualified product. Not all versions of this product may be DLC Premium qualified or DLC qualified. Please check the DLC Qualified Products List at [www.designlights.org/QPL](http://www.designlights.org/QPL) to confirm which versions are qualified. International Dark-Sky Association (IDA) Fixture Seal of Approval (FSA) is available for all products on this page utilizing 3000K color temperature and SRM mounting only.

#### BUY AMERICAN

This product is assembled in the USA and meets the Buy America(n) government procurement requirements under FARS, DFARS and DOT. Please refer to [www.acuitybrands.com/resources/buy-american](http://www.acuitybrands.com/resources/buy-american) for additional information.

#### WARRANTY

5-year limited warranty. Complete warranty terms located at: [www.acuitybrands.com/support/warranty/terms-and-conditions](http://www.acuitybrands.com/support/warranty/terms-and-conditions)

**Note:** Actual performance may differ as a result of end-user environment and application. All values are design or typical values, measured under laboratory conditions at 25 °C. Specifications subject to change without notice.