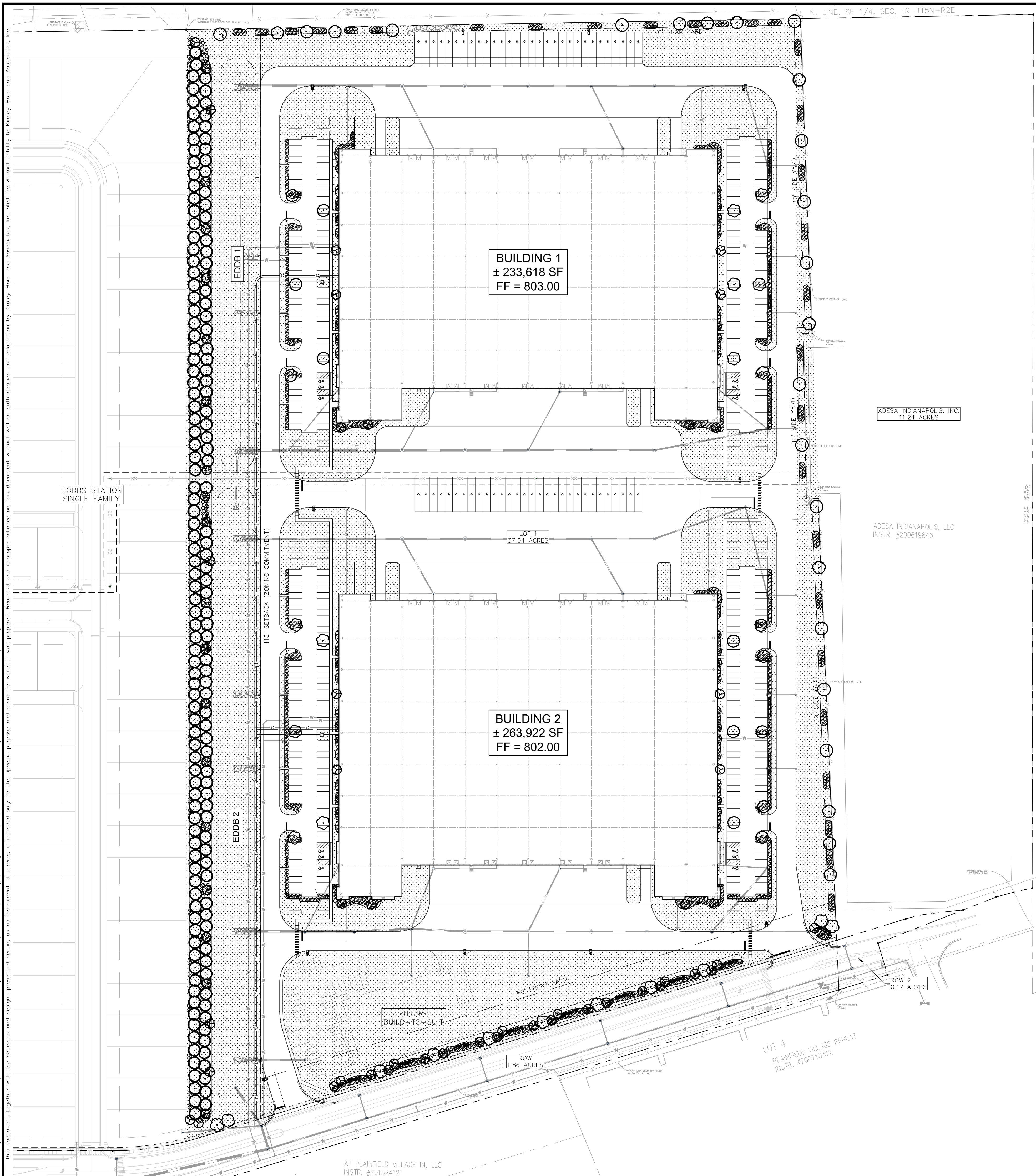


Drawing name: K:\IND_DEV\170292000\ind_hobbs-station-rg-pl-mixed-use_planfield_n\2 Design\CADD\planfield_n\1.D LANDSCAPE PLAN.dwg L1.0 Feb 08, 2022 12:36pm by TessaLiu11
 This document, together with the concepts and designs presented herein, as an instrument of service, is intended only for the specific purpose and client for which it was prepared. Reuse of and improper reliance on this document without written authorization and adaptation by Kimley-Horn and Associates, Inc. shall be without liability to Kimley-Horn and Associates, Inc.



Indiana Utilities Protection Service

Call 811
before you dig

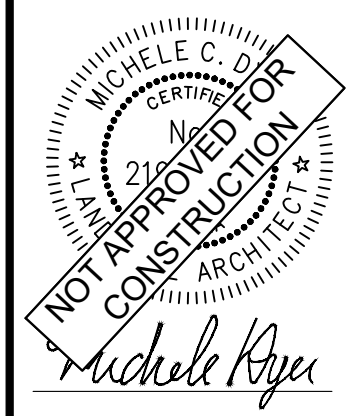
NORTH

GRAPHIC SCALE IN FEET
0 40' 80' 160'

No.	REVISIONS	DATE	BY

Kimley-Horn
©2022 KIMLEY-HORN AND ASSOCIATES, INC.
250 EAST 96TH STREET, SUITE 500
INDIANAPOLIS, IN 46240
WWW.KIMLEY-HORN.COM

SCALE: AS NOTED
DESIGNED BY: MCD
DRAWN BY: MCD
CHECKED BY: BAS



New City Development

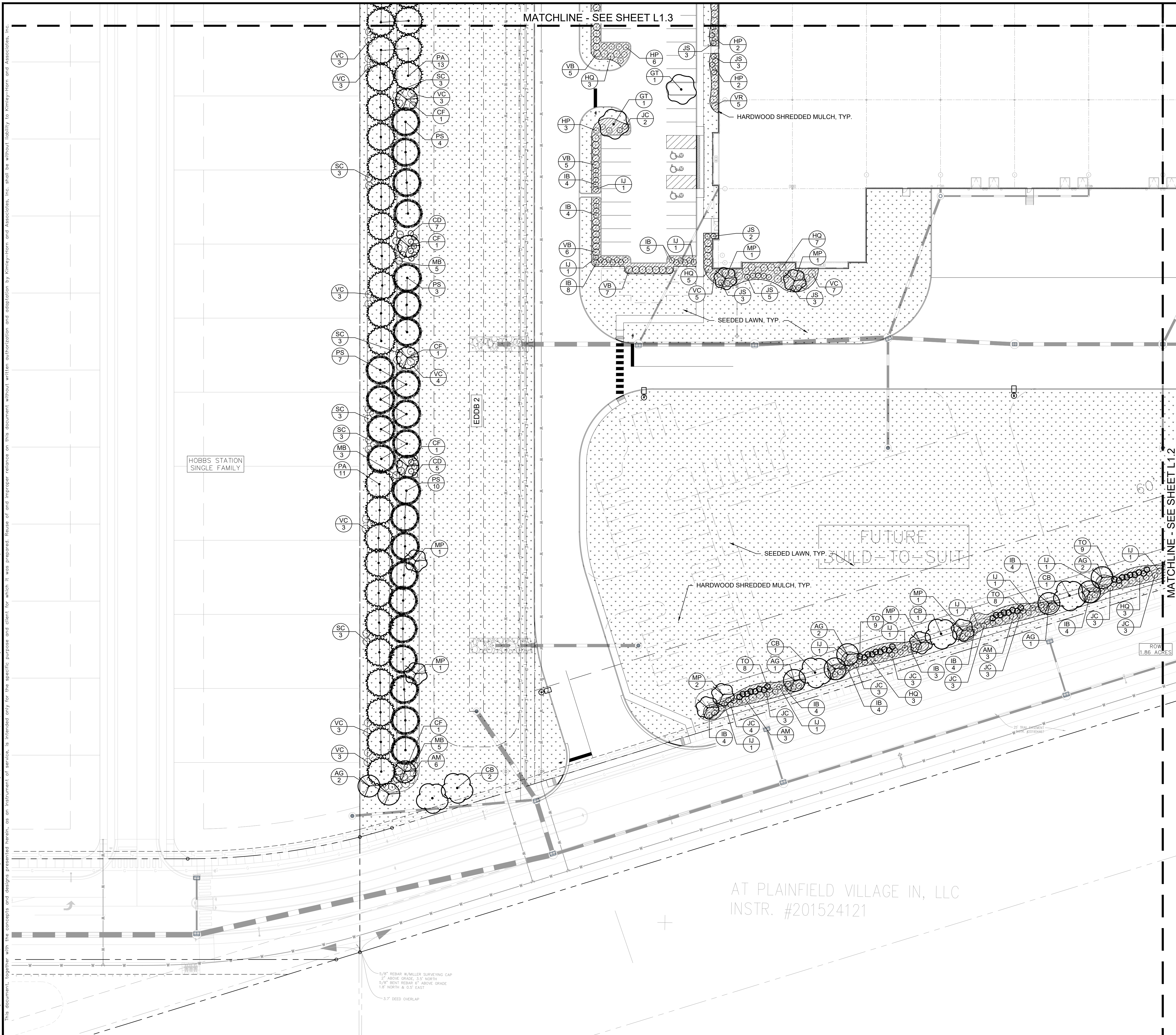
FORMATION PROPERTIES

OVERALL LANDSCAPE PLAN

TERMINUS AT HOBBS STATION
PLAINFIELD, IN 46168

ORIGINAL ISSUE: 01/27/2022
KHA PROJECT NO. 170248001
SHEET NUMBER
L1.0

Drawing name: K:\INDO\DEV\17022020\ind_hobbs-station-rog-pr-mixed-use-plantiffed_rn\2 Design\CADD\plantiffed_rn\17022022\17022022_L1.1 - Feb 09, 2022 - 12:36pm by: Tessalietti
 This document, together with the concepts and designs presented herein, is intended only for the specific purpose and client for which it was prepared. Reuse of and improper reliance on this document without written authorization and adaptation by Kimley-Horn and Associates, Inc. shall be without liability to Kimley-Horn and Associates, Inc.



Indiana Utilities Protection Service

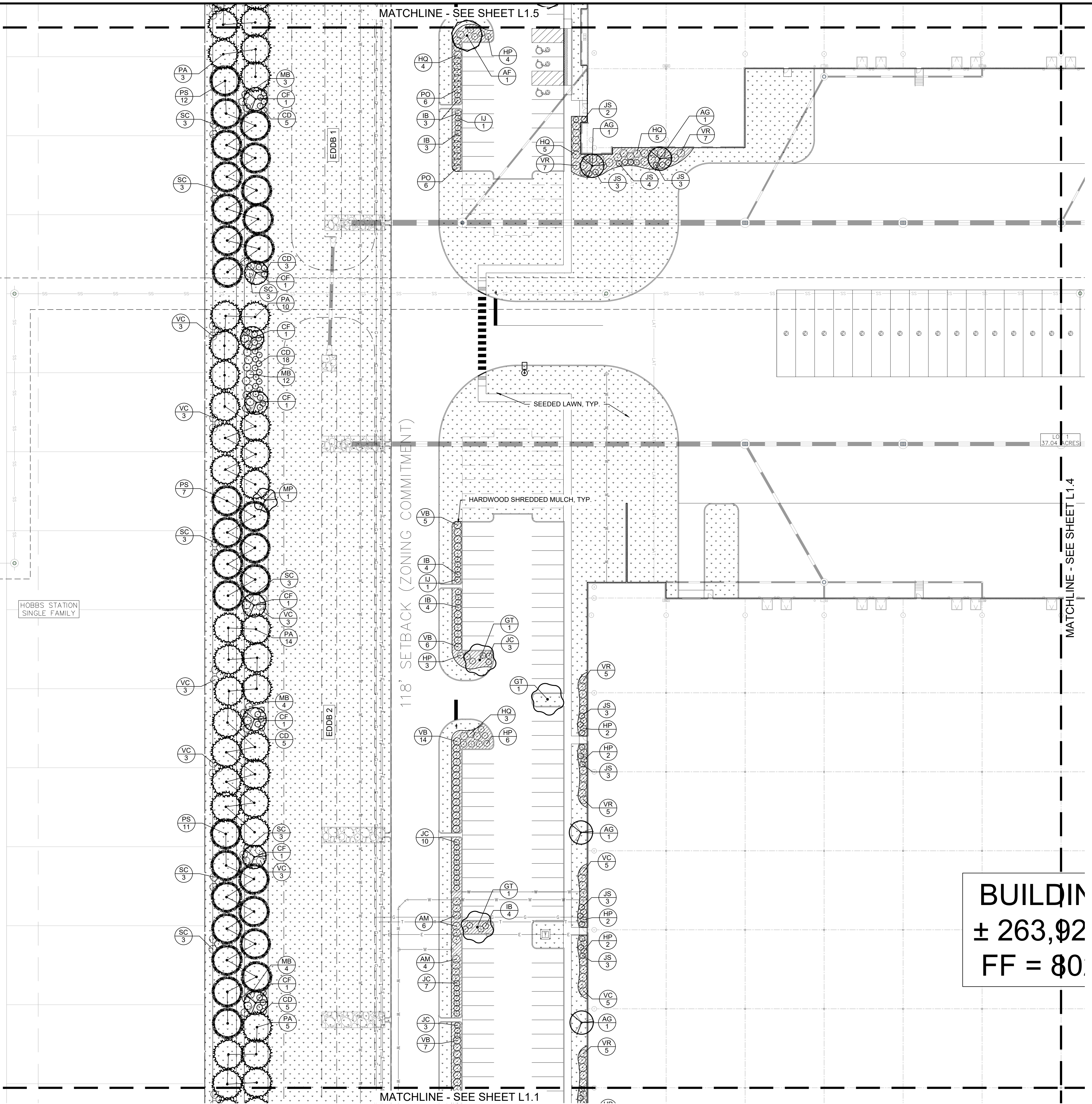
Call 811
before you dig

NORTH

GRAPHIC SCALE IN FEET
0 15' 30' 60'

<p>©2022 KIMLEY-HORN AND ASSOCIATES, INC. 250 EAST 96TH STREET, SUITE 560, INDIANAPOLIS, IN 46240 WWW.KIMLEY-HORN.COM</p>	
SCALE: AS NOTED DESIGNED BY: MCD DRAWN BY: MCD CHECKED BY: BAS	REVISIONS No. DATE BY
<p>NO APPROVED FOR CONSTRUCTION</p> <p>Michele R. Ryan</p>	
<p>FORMATION PROPERTIES</p>	
<p>LANDSCAPE PLAN</p>	
<p>TERMINUS AT HOBBS STATION</p> <p>PLAINFIELD, IN 46168</p>	
ORIGINAL ISSUE: 01/27/2022 KHA PROJECT NO. 170248001 SHEET NUMBER L1.1	

Drawing name: K:\IND_L1EV\170292000\ind_hobbs-station-mg-pl-mixed-use_plantiffed_rn\2 Design\CADD\plansets\W\ALL.D LANDSCAPE PLAN.dwg L1.3 Feb 08, 2022 12:36pm by TessaLuetli
 This document, together with the concepts and designs presented herein, as an instrument of service, is intended only for the specific purpose and client for which it was prepared. Reuse of and improper reliance on this document without written authorization and adaptation by Kimley-Horn and Associates, Inc. shall be without liability to Kimley-Horn and Associates, Inc.



Indiana Utilities Protection Service

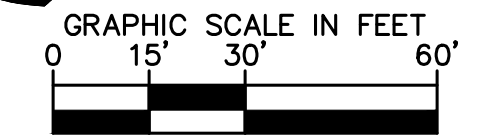
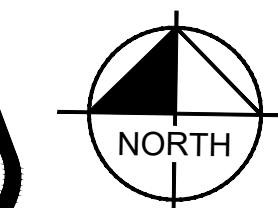
Call 811
before you dig

NORTH

GRAPHIC SCALE IN FEET
0 15' 30' 60'

BUILDING
± 263,92
FF = 80

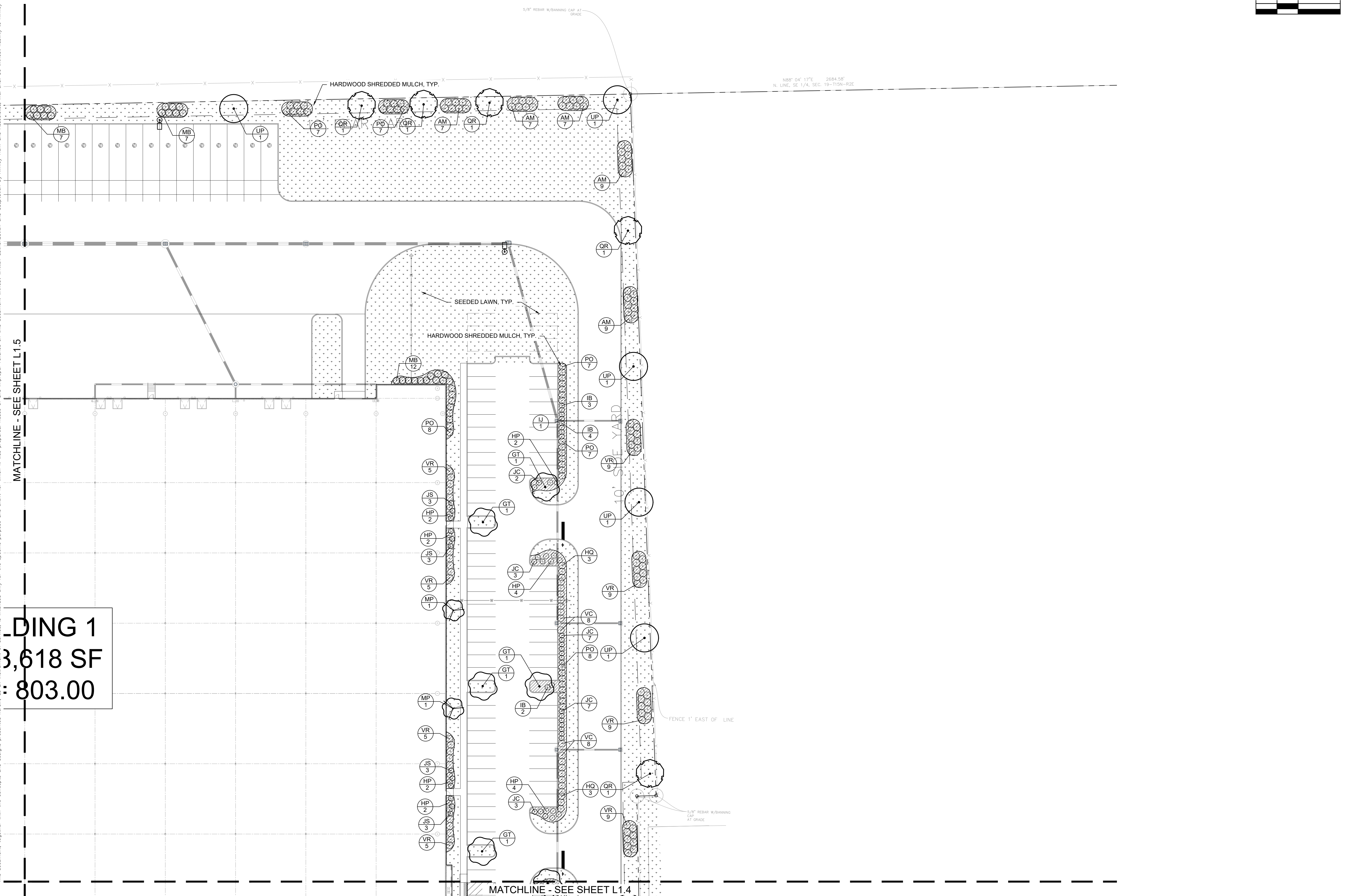
<p>© 2022 KIMLEY-HORN AND ASSOCIATES, INC. 250 EAST 96TH STREET, SUITE 560, INDIANAPOLIS, IN 46240 WWW.KIMLEY-HORN.COM</p>	
SCALE: AS NOTED DESIGNED BY: MCD DRAWN BY: MCD CHECKED BY: BAS	NO. _____ DATE _____ BY _____
<p>FORMATION PROPERTIES</p>	
LANDSCAPE PLAN	
TERMINUS AT HOBBS STATION <small>PLAINFIELD, IN 46168</small>	
ORIGINAL ISSUE: 01/27/2022 KHA PROJECT NO. 170248001 SHEET NUMBER L1.3	



Drawing name: K:\IND\DEV\170292000\ind_jobs\stationing-pl-mixed-use_planfield_n\2 Design\CADD\planfield_n\1.6 LANDSCAPE PLAN.dwg L1.6 Feb 08, 2022 12:26pm by TessaLuetell
This document, together with the concepts and designs presented herein, as an instrument of service, is intended only for the specific purpose and client for which it was prepared. Reuse of and improper reliance on this document without written authorization and adaptation by Kimley-Horn and Associates, Inc. shall be without liability to Kimley-Horn and Associates, Inc.

MATCHLINE - SEE SHEET L1.5

BUILDING 1
3,618 SF
= 803.00



MATCHLINE - SEE SHEET L1.4

<p>©2022 KIMLEY-HORN AND ASSOCIATES, INC. 250 EAST 96TH STREET, SUITE 500, INDIANAPOLIS, IN 46240 WWW.KIMLEY-HORN.COM</p>	
<p>SCALE: AS NOTED DESIGNED BY: MCD DRAWN BY: MCD CHECKED BY: BAS</p>	<p>NO APPROVED FOR CONSTRUCTION ARCHITECT MICHELE C. BYRNE 2/15/22 MICHELE C. BYRNE ARCHITECT</p>
<p>LANDSCAPE PLAN</p>	
<p>TERMINUS AT HOBBS STATION PLAINFIELD, IN 46168</p>	
<p>ORIGINAL ISSUE: 01/27/2022 KHA PROJECT NO. 170248001 SHEET NUMBER L1.6</p>	
<p>REVISIONS</p>	<p>DATE BY</p>

