

EXISTING LEGEND

- 770 --- EXISTING CONTOUR: MAJOR
- 769 --- EXISTING CONTOUR: MINOR
- OHU --- OVERHEAD UTILITY LINES
- P --- POWER POLE
- L --- LIGHT POLE
- G --- GUY WIRE
- E --- ELECTRIC METER
- T --- ELECTRIC TRANSFORMER
- U --- UNDERGROUND TELEPHONE
- S --- TELEPHONE SPlice BOX
- W --- WATER LINE
- F --- FIRE HYDRANT
- V --- WATER VALVE
- G --- GAS LINE
- V --- GAS VALVE
- S --- SANITARY SEWER LINE
- M --- SANITARY SEWER MANHOLE
- C --- CLEAN-OUT
- S --- STORM PIPE
- M --- STORM MANHOLE
- S --- STORM INLETS
- F --- FLOWLINE
- P --- FENCELINE
- F --- FIELD DIVISION LINE
- S --- SIGN
- M --- MAILBOX
- T --- TREELINE / EDGE OF WOODS
- B --- BOULDER
- B --- BUSH
- T --- TREE
- A --- ASPHALT
- G --- GRAVEL
- C --- CONCRETE
- W --- WETLANDS

PROPOSED LEGEND

- CURB W/ UNDERDRAIN
- STORM SEWER PIPE
- STORM SEWER MANHOLE
- STORM SEWER INLETS
- STORM SEWER CURB INLET
- STORM SEWER END-SECTION
- SUBSURFACE DRAIN
- SANITARY FORCE MAIN
- SANITARY SEWER PIPE
- SANITARY SEWER MANHOLE
- WATER LINE - PROPOSED
- FIRE HYDRANT W/ VALVE
- BLOWOFF ASSEMBLY
- WATER VALVE
- WATER METER
- STREET LIGHT
- STOP SIGN / STREET SIGN
- REGULATORY STREET SIGN

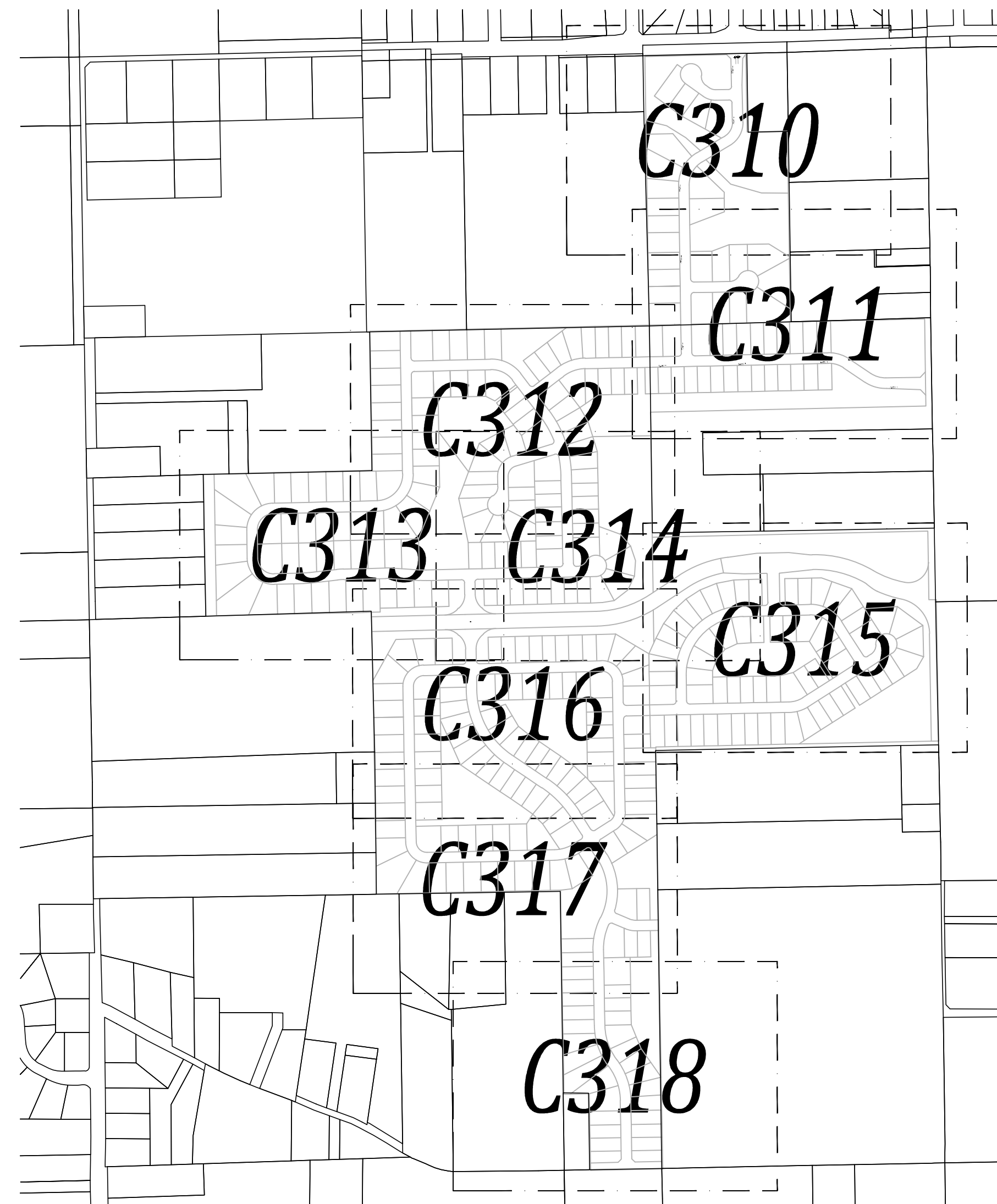
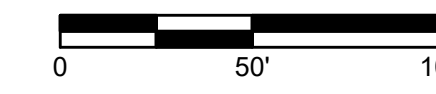
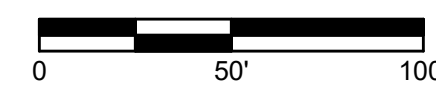
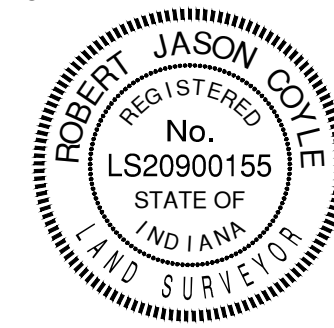
NOTES:

- SCHOOL DISTRICT: PLAINFIELD
- CURRENT ZONING DISTRICT: R3 & R4
- SIDEWALKS WILL BE LOCATED ON BOTH SIDES OF ALL STREETS THROUGHOUT THIS SUBDIVISION, EXCEPT FOR ALONG COUNTY ROADS.
- STREET SIGNAGE WILL BE IN ACCORDANCE WITH PLAINFIELD STANDARDS FOR LOCATION AND TYPE.
- THE EROSION CONTROL PLAN WILL MEET ALL NCRS, DNR, AND MS4 REQUIREMENTS AND WILL BE SUBMITTED TO IDEM TO COMPLY WITH RULE 5.
- ALL INFRASTRUCTURE TO MEET TOWN OF PLAINFIELD STANDARDS AND REQUIREMENTS.
- ALL SANITARY SEWER MAINS SHALL BE 8" OR 10" PVC SANITARY, UNLESS OTHER WISE NOTED.
- ALL BACK OF CURB RADIUS TO BE 25 FEET.
- ALL AREAS AND DIMENSIONS SHOWN ON THIS PLAN ARE APPROXIMATE UNTIL CONSTRUCTION PLANS AND PLAT ARE COMPLETE.

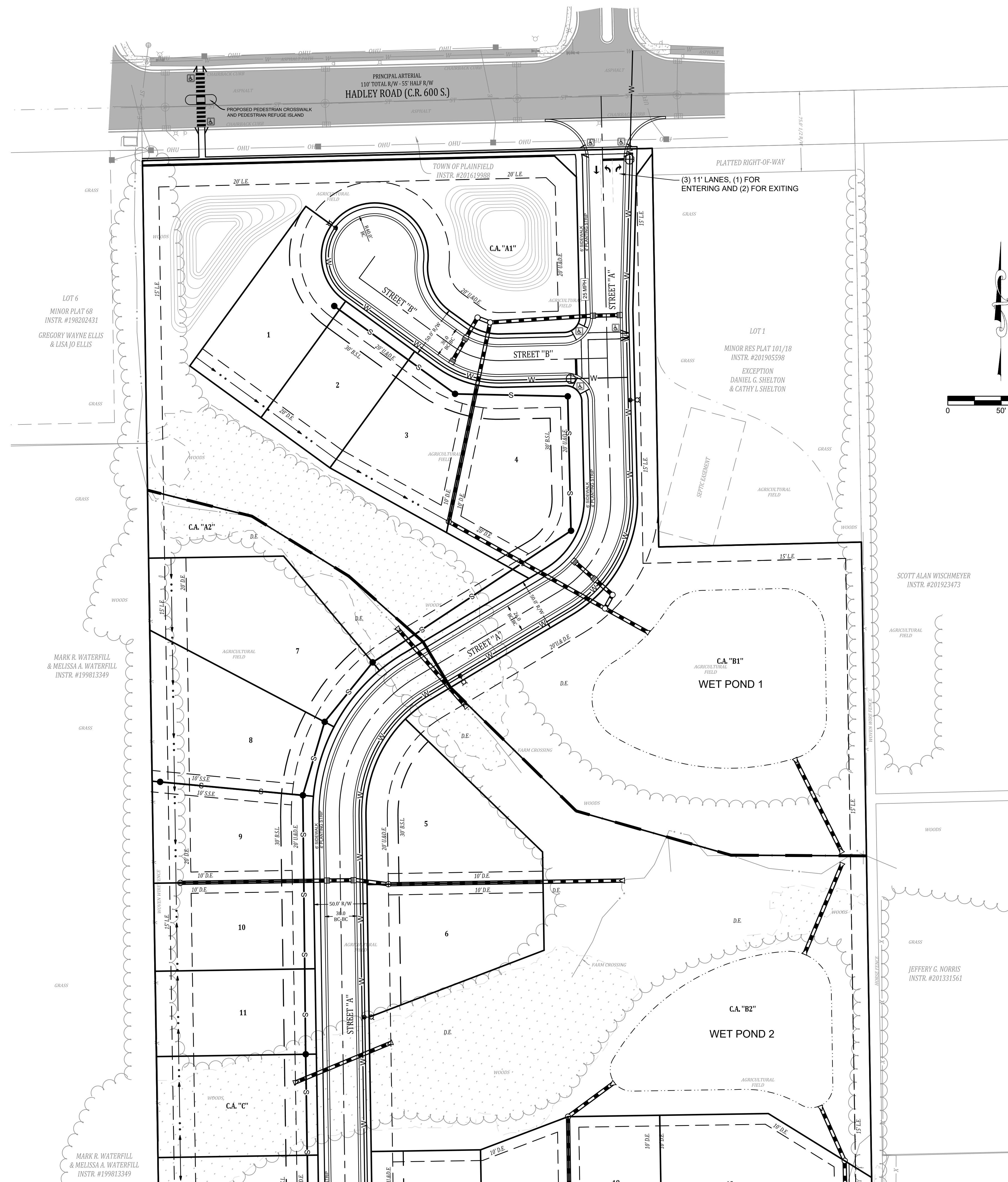
- LEGEND**
- D. --- DRAINAGE
 - U. --- UTILITY
 - L.S. --- LANDSCAPE
 - E. --- EASEMENT
 - VAR. --- VARIABLE
 - R/W --- RIGHT OF WAY
 - B.S.L. --- BUILDING SETBACK LINE
 - sq. ft. --- SQUARE FEET



Robert Jason Coyle
 ROBERT JASON COYLE, P.S.
 PROFESSIONAL SURVEYOR
 STATE OF INDIANA
 PS # LS20900155



SHEET KEY MAP



SEE SHEET C311 FOR CONTINUATION

Date	1-7-2022
Revisions	1-7-2022
2-1-2022	
1	REVISIONS BASED UPON TAC MEETING DISCUSSION
2	REVISIONS PER PLAINFIELD STAFF COMMENTS
Sym.	
1	R/C
2	J/B
Drawn:	
Checked:	
Scale:	1" = 50'
Date:	11/30/21

UTILITIES, SIDEWALK, & SIGNAGE PLAN
 TRESSCOTT
 HENDRICKS COUNTY, GUILFORD TOWNSHIP
 PLAINFIELD, INDIANA

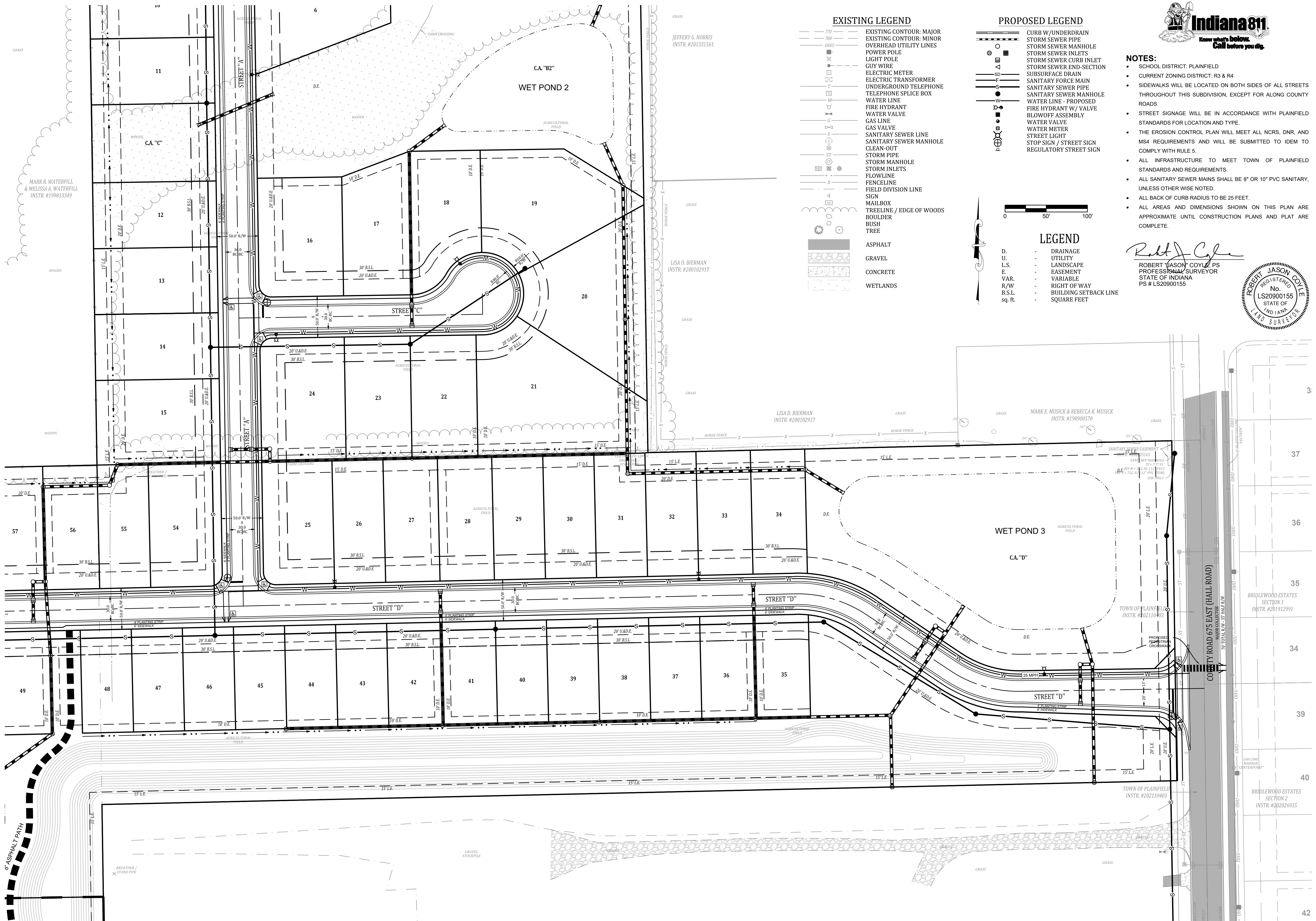
NOT FOR CONSTRUCTION

BANNING ENGINEERING
 853 COLUMBIA ROAD, SUITE #101
 PLAINFIELD, IN 46168
 BUS: (317) 707-3700, FAX: (317) 707-3800
 E-MAIL: Banning@BanningEngineering.com
 WEB: www.BanningEngineering.com

Project No: 19274
 Sheet No:

C310

SEE SHEET C310 FOR CONTINUATION



EXISTING LEGEND

- 770 --- EXISTING CONTOUR: MAJOR
- 778 --- EXISTING CONTOUR: MINOR
- OHU --- OVERHEAD UTILITY LINES
- POWER POLE
- LIGHT POLE
- GUY WIRE
- ELECTRIC METER
- ELECTRIC TRANSFORMER
- UNDERGROUND TELEPHONE
- TELEPHONE SPLICE BOX
- WATER LINE
- FIRE HYDRANT
- WATER VALVE
- GAS VALVE
- SANITARY SEWER LINE
- SANITARY SEWER MANHOLE
- CLEAN-OUT
- STORM PIPE
- STORM MANHOLE
- STORM INLETS
- FLOWLINE
- FENCELINE
- FIELD DIVISION LINE
- SIGN
- MAILBOX
- TREELINE / EDGE OF WOODS
- BOULDER
- BUSH
- TREE
- ASPHALT
- GRAVEL
- CONCRETE
- WETLANDS

PROPOSED LEGEND

- CURB W/UNDERDRAIN
- STORM SEWER PIPE
- STORM SEWER MANHOLE
- STORM SEWER INLETS
- STORM SEWER CURB INLET
- STORM SEWER END-SECTION
- SUBSURFACE DRAIN
- SANITARY FORCE MAIN
- SANITARY SEWER PIPE
- SANITARY SEWER MANHOLE
- WATER LINE - PROPOSED
- FIRE HYDRANT W/ VALVE
- BLOWOFF ASSEMBLY
- WATER VALVE
- WATER METER
- STREET LIGHT
- STOP SIGN / STREET SIGN
- REGULATORY STREET SIGN

LEGEND

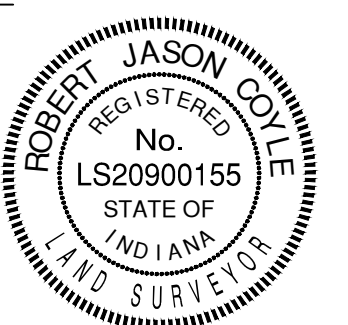
- D. --- DRAINAGE
- U. --- UTILITY
- L.S. --- LANDSCAPE
- E. --- EASEMENT
- VAR. --- VARIABLE
- R/W --- RIGHT OF WAY
- B.S.L. --- BUILDING SETBACK LINE
- sq. ft. --- SQUARE FEET



NOTES:

- SCHOOL DISTRICT: PLAINFIELD
- CURRENT ZONING DISTRICT: R3 & R4
- SIDEWALKS WILL BE LOCATED ON BOTH SIDES OF ALL STREETS THROUGHOUT THIS SUBDIVISION, EXCEPT FOR ALONG COUNTY ROADS.
- STREET SIGNAGE WILL BE IN ACCORDANCE WITH PLAINFIELD STANDARDS FOR LOCATION AND TYPE.
- THE EROSION CONTROL PLAN WILL MEET ALL NGRS, DNR, AND MS4 REQUIREMENTS AND WILL BE SUBMITTED TO IDEM TO COMPLY WITH RULE 5.
- ALL INFRASTRUCTURE TO MEET TOWN OF PLAINFIELD STANDARDS AND REQUIREMENTS.
- ALL SANITARY SEWER MAINS SHALL BE 8" OR 10" PVC SANITARY, UNLESS OTHERWISE NOTED.
- ALL BACK OF CURB RADIUS TO BE 25 FEET.
- ALL AREAS AND DIMENSIONS SHOWN ON THIS PLAN ARE APPROXIMATE UNTIL CONSTRUCTION PLANS AND PLAT ARE COMPLETE.

Robert Jason Coyle
 ROBERT JASON COYLE, PS
 PROFESSIONAL SURVEYOR
 STATE OF INDIANA
 PS # LS20900155



UTILITIES, SIDEWALK, & SIGNAGE PLAN
 TRESSCOTT
 HENDRICKS COUNTY, GUILFORD TOWNSHIP
 PLAINFIELD, INDIANA

NOT FOR CONSTRUCTION

BANNING ENGINEERING
 853 COLUMBIA ROAD, SUITE #101
 PLAINFIELD, IN 46168
 BUS: (317) 707-3700, FAX: (317) 707-3800
 E-MAIL: Banning@BanningEngineering.com
 WEB: www.BanningEngineering.com

Project No: 19274
 Sheet No:

C311

Baldwin P.: 2019\1927A\Engineering\Cadd\Sheet Files\Primary Plat\1927A-PP-Utility.dwg Feb 01, 2022 - 1:06pm

SEE SHEET C312 FOR CONTINUATION

Date	1-7-2022
Revisions	2-1-2022
1	REVISIONS BASED UPON TAC MEETING DISCUSSION
2	REVISIONS PER PLAINFIELD STAFF COMMENTS
Designed:	RJC
Drawn:	JCB
Checked:	RJC
Scale:	1" = 50'
Date:	11/30/21

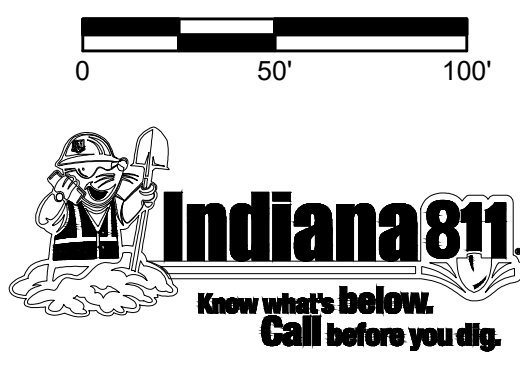
P:\2019\1927A\Engineering\Cadd\Sheet Files\Primary Plat\1927A-PP-Utility.dwg Feb 01, 2022 - 1:06pm



SEE SHEET C313 FOR CONTINUATION

SEE SHEET C313 FOR CONTINUATION

SEE SHEET C314 FOR CONTINUATION



SEE SHEET C310 FOR LEGENDS.

Robert Jason Coyle
ROBERT JASON COYLE, PS
PROFESSIONAL SURVEYOR
STATE OF INDIANA
PS # LS20900155



SEE SHEET C311 FOR CONTINUATION

UTILITIES, SIDEWALK, & SIGNAGE PLAN
TRESSCOTT
HENDRICKS COUNTY, GUILFORD TOWNSHIP
PLAINFIELD, INDIANA

NOT FOR CONSTRUCTION

BANNING ENGINEERING
853 COLUMBIA ROAD, SUITE #101
PLAINFIELD, IN 46168
BUS: (317) 707-3700 FAX: (317) 707-3800
E-MAIL: Banning@BanningEngineering.com
WEB: www.BanningEngineering.com

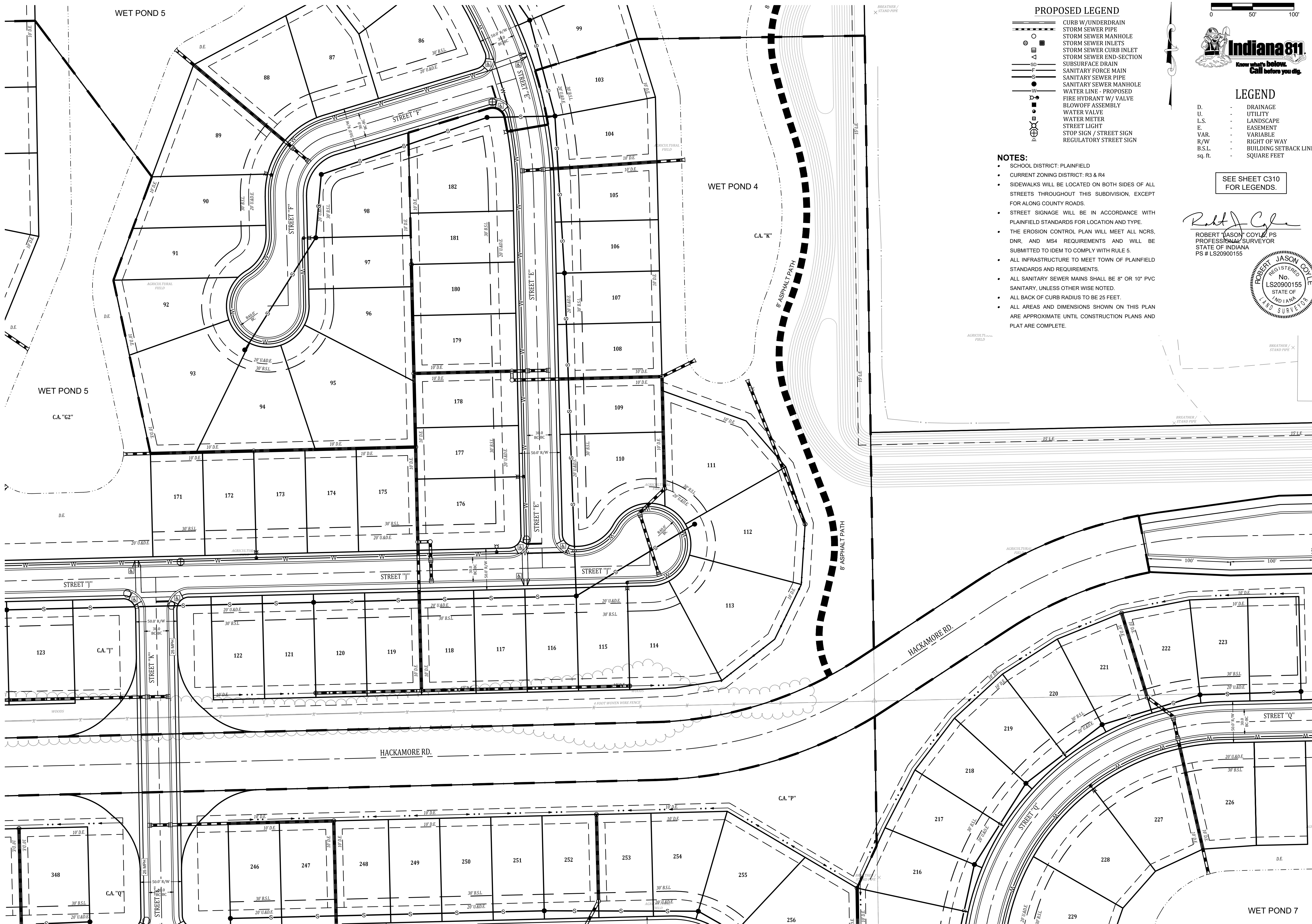
Project No: 19274
Sheet No:

C312

Date	Revisions
1-7-2022	1 REVISIONS BASED UPON TAC MEETING DISCUSSION
2-1-2022	2 REVISIONS PER PLAINFIELD STAFF COMMENTS

Drawn:	Checked:	Scale:	Date:
RJC	RJC	1" = 50'	11/30/21

SEE SHEET C312 FOR CONTINUATION

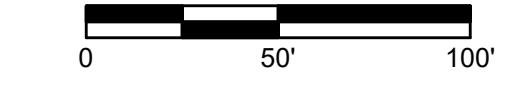


PROPOSED LEGEND

- CURB W/UNDERDRAIN
- STORM SEWER PIPE
- STORM SEWER MANHOLE
- STORM SEWER INLETS
- STORM SEWER CURB INLET
- STORM SEWER END-SECTION
- SUBSURFACE DRAIN
- SANITARY FORCE MAIN
- SANITARY SEWER PIPE
- SANITARY SEWER MANHOLE
- WATER LINE - PROPOSED
- FIRE HYDRANT W/ VALVE
- BLOWOFF ASSEMBLY
- WATER VALVE
- WATER METER
- STREET LIGHT
- STOP SIGN / STREET SIGN
- REGULATORY STREET SIGN

NOTES:

- SCHOOL DISTRICT: PLAINFIELD
- CURRENT ZONING DISTRICT: R3 & R4
- SIDEWALKS WILL BE LOCATED ON BOTH SIDES OF ALL STREETS THROUGHOUT THIS SUBDIVISION, EXCEPT FOR ALONG COUNTY ROADS.
- STREET SIGNAGE WILL BE IN ACCORDANCE WITH PLAINFIELD STANDARDS FOR LOCATION AND TYPE.
- THE EROSION CONTROL PLAN WILL MEET ALL NCRS, DNR, AND MS4 REQUIREMENTS AND WILL BE SUBMITTED TO IDEM TO COMPLY WITH RULE 5.
- ALL INFRASTRUCTURE TO MEET TOWN OF PLAINFIELD STANDARDS AND REQUIREMENTS.
- ALL SANITARY SEWER MAINS SHALL BE 8" OR 10" PVC SANITARY, UNLESS OTHER WISE NOTED.
- ALL BACK OF CURB RADIUS TO BE 25 FEET.
- ALL AREAS AND DIMENSIONS SHOWN ON THIS PLAN ARE APPROXIMATE UNTIL CONSTRUCTION PLANS AND PLAT ARE COMPLETE.

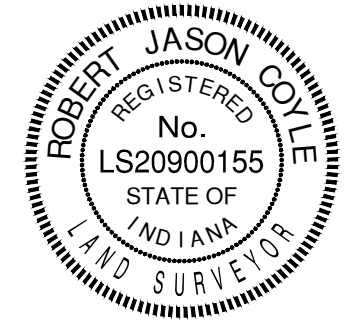


LEGEND

- D. - DRAINAGE
- U. - UTILITY
- L.S. - LANDSCAPE
- E. - EASEMENT
- VAR. - VARIABLE
- R/W - RIGHT OF WAY
- B.S.L. - BUILDING SETBACK LINE
- sq. ft. - SQUARE FEET

SEE SHEET C310 FOR LEGENDS.

Robert Jason Coyle
 ROBERT JASON COYLE, P.S.
 PROFESSIONAL SURVEYOR
 STATE OF INDIANA
 PS # LS20900155



SEE SHEET C313 FOR CONTINUATION

SEE SHEET C315 FOR CONTINUATION

UTILITIES, SIDEWALK, & SIGNAGE PLAN
 TRESSCOTT
 HENDRICKS COUNTY, GUILFORD TOWNSHIP
 PLAINFIELD, INDIANA

NOT FOR CONSTRUCTION

BANNING ENGINEERING
 853 COLUMBIA ROAD, SUITE #101
 PLAINFIELD, IN 46168
 BUS: (317) 707-3700, FAX: (317) 707-3800
 E-MAIL: Banning@BanningEngineering.com
 WEB: www.BanningEngineering.com

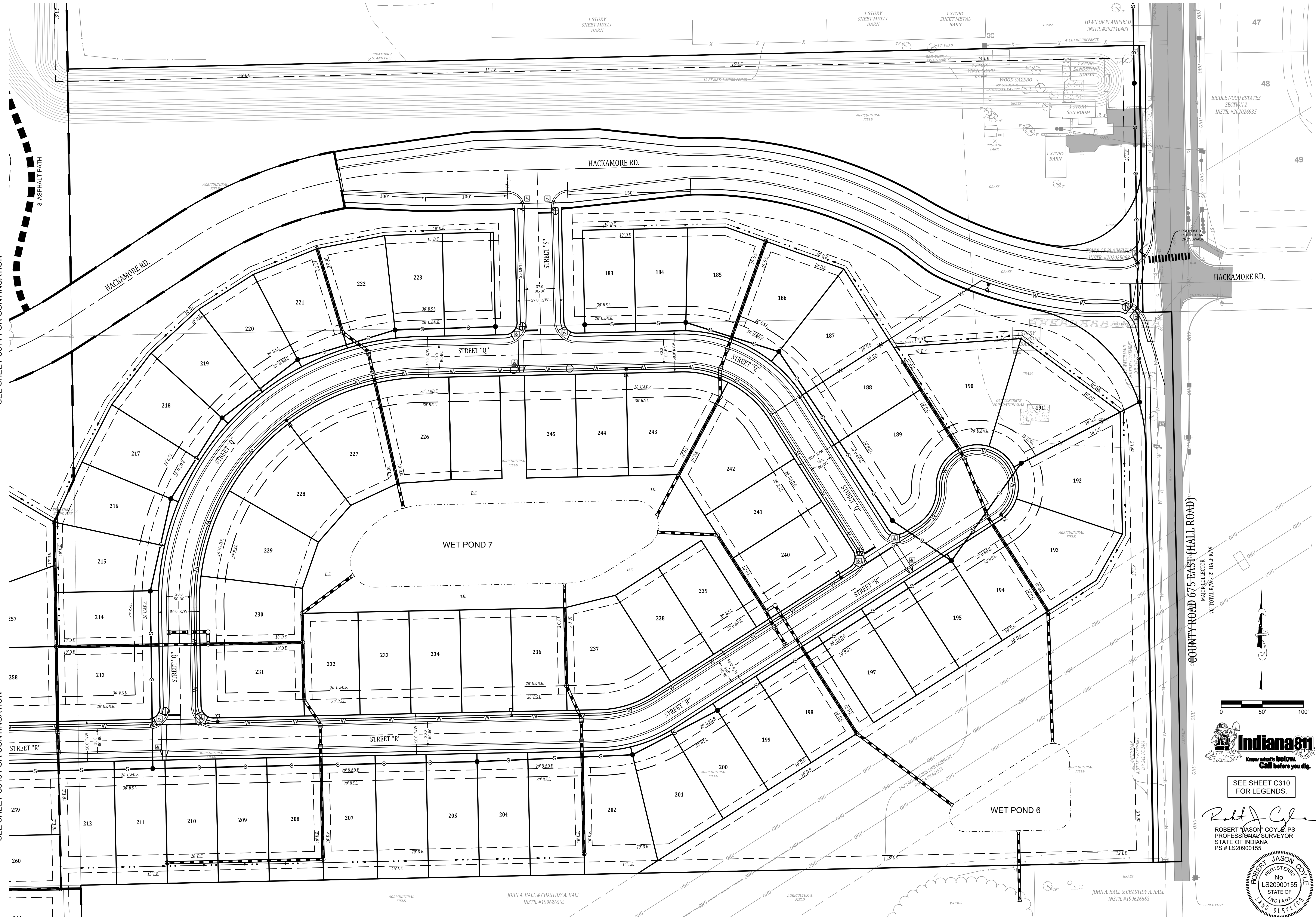
Project No: 19274
 Sheet No:

Plotdwn: P:\2019\19274\Engineering\Cadd\Sheet Files\Primary Plat\19274-PP-Utility.dwg Feb 01, 2022 - 1:06pm

P:\2019\1927A\Engineering\Cadd\Sheet_Files\Primary\1927A-PP-Utility.dwg Feb 01, 2022 - 1:06pm

SEE SHEET C314 FOR CONTINUATION

SEE SHEET C316 FOR CONTINUATION



COUNTY ROAD 675 EAST (HALL ROAD)
MAJOR COLLECTOR
70' TOTAL R/W - 35' HALF R/W



SEE SHEET C310 FOR LEGENDS.

Robert J. Coyle
 ROBERT JASON COYLE, P.S.
 PROFESSIONAL SURVEYOR
 STATE OF INDIANA
 PS # LS20900155



Date	1-7-2022
Revisions	1-7-2022
1	REVISIONS BASED UPON TAC MEETING DISCUSSION
2	REVISIONS PER PLAINFIELD STAFF COMMENTS
2-7-2022	
Designed:	Sym.
Drawn:	RJC
Checked:	JCB
Scale:	RJC
1" = 50'	
Date:	11/30/21

UTILITIES, SIDEWALK, & SIGNAGE PLAN
 TRESSCOTT
 HENDRICKS COUNTY, GUILFORD TOWNSHIP
 PLAINFIELD, INDIANA

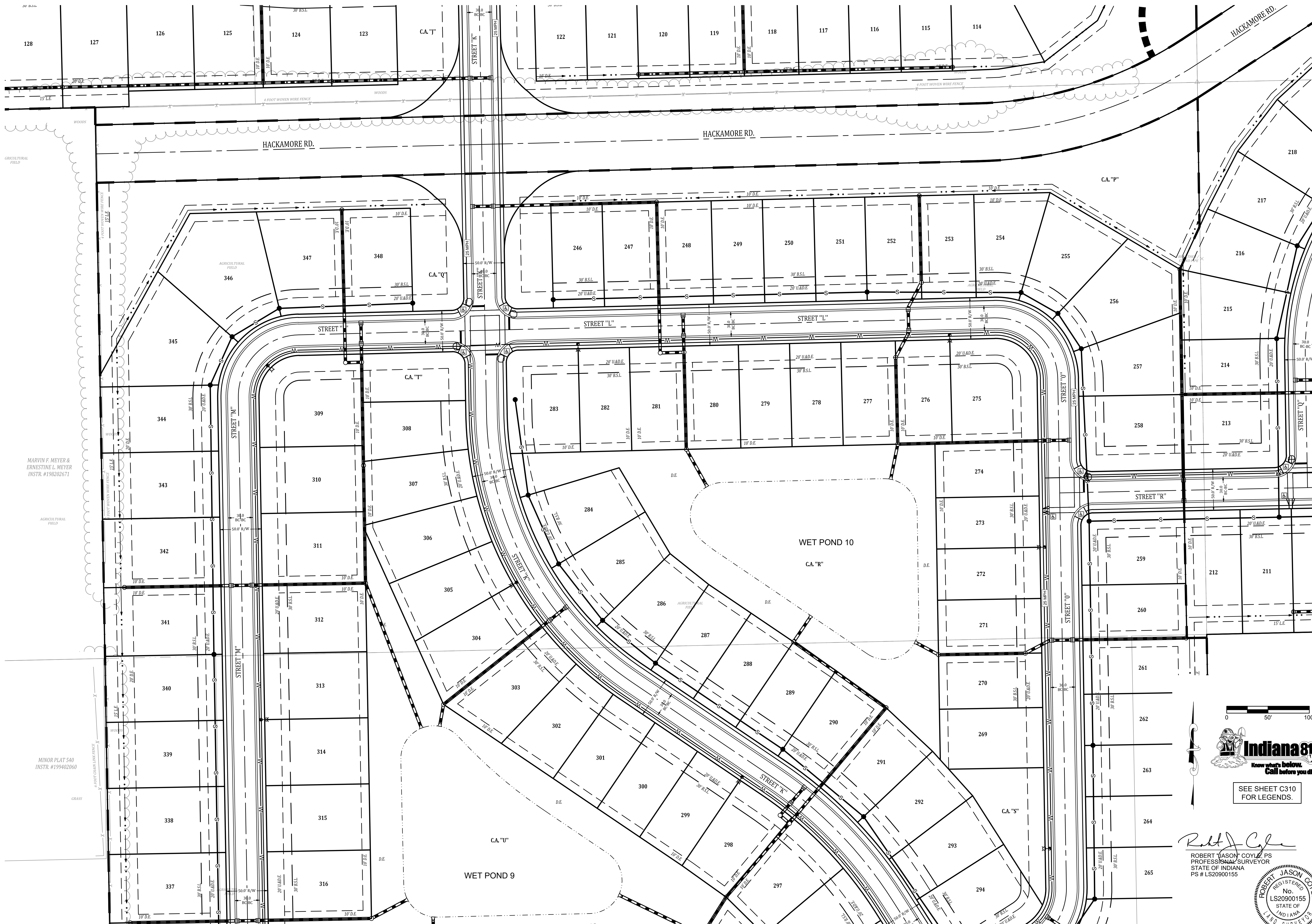
NOT FOR CONSTRUCTION

BANNING ENGINEERING
 853 COLUMBIA ROAD, SUITE #101
 PLAINFIELD, IN 46168
 BUS: (317) 707-3700 FAX: (317) 707-3800
 E-MAIL: Banning@BanningEngineering.com
 WEB: www.BanningEngineering.com

Project No: 19274
 Sheet No:

SEE SHEET C313 FOR CONTINUATION

SEE SHEET C314 FOR CONTINUATION



SEE SHEET C317 FOR CONTINUATION

SEE SHEET C317 FOR CONTINUATION

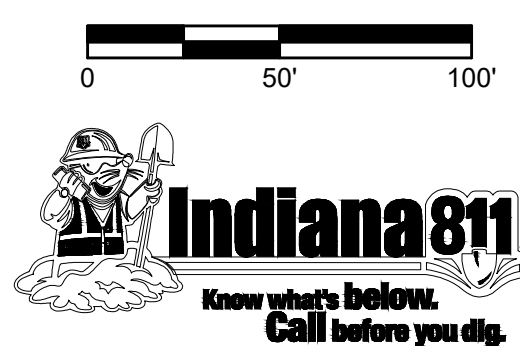
SEE SHEET C315 FOR CONTINUATION

UTILITIES, SIDEWALK, & SIGNAGE PLAN
TRESCOTT
 HENDRICKS COUNTY, GUILFORD TOWNSHIP
 PLAINFIELD, INDIANA

NOT FOR CONSTRUCTION

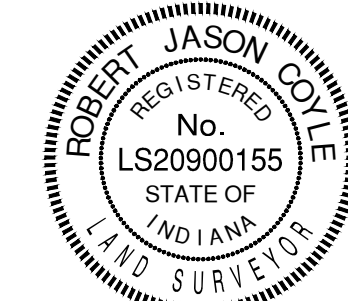
BANNING ENGINEERING
 853 COLUMBIA ROAD, SUITE #101
 PLAINFIELD, IN 46168
 BUS: (317) 707-3700, FAX: (317) 707-3800
 E-MAIL: Banning@BanningEngineering.com
 WEB: www.BanningEngineering.com

Date	1-7-2022
Revisions	1-7-2022
1	REVISIONS BASED UPON TAC MEETING DISCUSSION
2	REVISIONS PER PLAINFIELD STAFF COMMENTS
2-1-2022	
Designed:	RJC
Drawn:	JLB
Checked:	RJC
Scale:	1" = 50'
Date:	11/30/21



SEE SHEET C310 FOR LEGENDS.

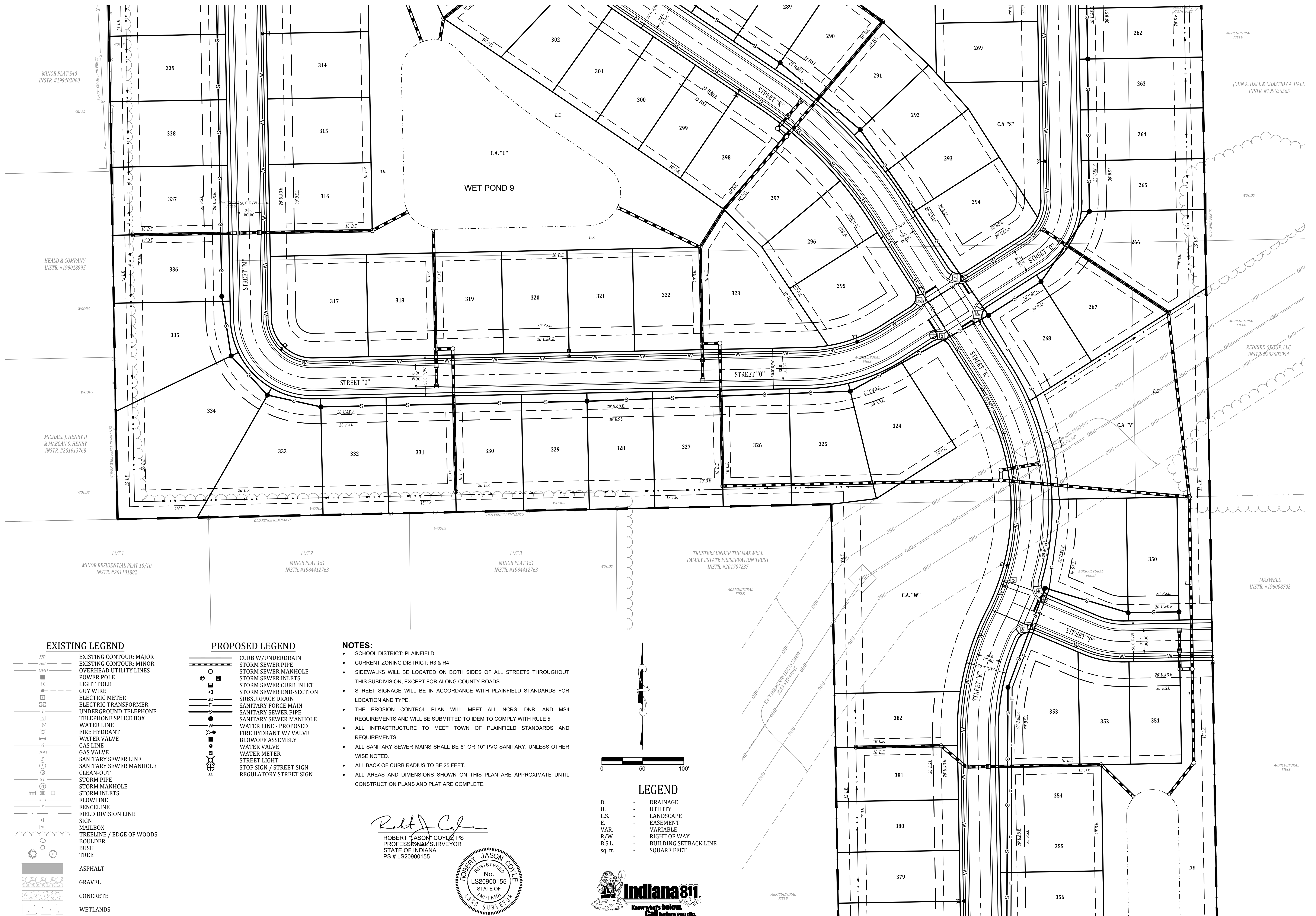
Robert Jason Coyle
 ROBERT JASON COYLE, P.S.
 PROFESSIONAL SURVEYOR
 STATE OF INDIANA
 PS # LS20900155



Project No: 19274
 Sheet No:

C316

P:\dwg\2019\19274\Engineering\Cadd\Sheet Files\Primary Plat\19274-PP-Utility.dwg Feb 01, 2022 - 1:06pm
 P:\dwg\2019\19274\Engineering\Cadd\Sheet Files\Primary Plat\19274-PP-Utility.dwg Feb 01, 2022 - 1:06pm



EXISTING LEGEND

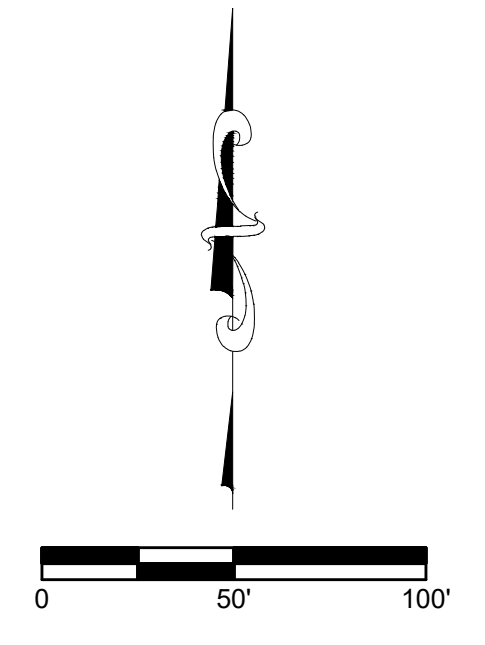
- 770 --- EXISTING CONTOUR: MAJOR
- 780 --- EXISTING CONTOUR: MINOR
- OHU --- OVERHEAD UTILITY LINES
- POWER POLE
- LIGHT POLE
- GUY WIRE
- ELECTRIC METER
- ELECTRIC TRANSFORMER
- UNDERGROUND TELEPHONE
- TELEPHONE SPICE BOX
- WATER LINE
- FIRE HYDRANT W/ VALVE
- WATER VALVE
- GAS LINE
- GAS VALVE
- SANITARY SEWER LINE
- SANITARY SEWER MANHOLE
- CLEAN-OUT
- STORM PIPE
- STORM MANHOLE
- STORM INLETS
- FLOWLINE
- FENCELINE
- FIELD DIVISION LINE
- SIGN
- MAILBOX
- TREELINE / EDGE OF WOODS
- BOULDER
- BUSH
- TREE
- ASPHALT
- GRAVEL
- CONCRETE
- WETLANDS

PROPOSED LEGEND

- CURB W/ UNDERDRAIN
- STORM SEWER PIPE
- STORM SEWER MANHOLE
- STORM SEWER INLETS
- STORM SEWER CURB INLET
- STORM SEWER END-SECTION
- SUBSURFACE DRAIN
- SANITARY FORCE MAIN
- SANITARY SEWER PIPE
- SANITARY SEWER MANHOLE
- WATER LINE - PROPOSED
- FIRE HYDRANT W/ VALVE
- BLOWOFF ASSEMBLY
- WATER VALVE
- WATER METER
- STREET LIGHT
- STOP SIGN / STREET SIGN
- REGULATORY STREET SIGN

NOTES:

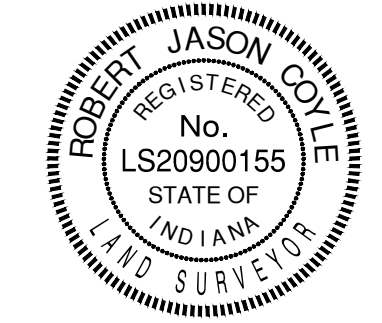
- SCHOOL DISTRICT: PLAINFIELD
- CURRENT ZONING DISTRICT: R3 & R4
- SIDEWALKS WILL BE LOCATED ON BOTH SIDES OF ALL STREETS THROUGHOUT THIS SUBDIVISION, EXCEPT FOR ALONG COUNTY ROADS.
- STREET SIGNAGE WILL BE IN ACCORDANCE WITH PLAINFIELD STANDARDS FOR LOCATION AND TYPE.
- THE EROSION CONTROL PLAN WILL MEET ALL NCRS, DNR, AND MS4 REQUIREMENTS AND WILL BE SUBMITTED TO IDEM TO COMPLY WITH RULE 5.
- ALL INFRASTRUCTURE TO MEET TOWN OF PLAINFIELD STANDARDS AND REQUIREMENTS.
- ALL SANITARY SEWER MAINS SHALL BE 8" OR 10" PVC SANITARY, UNLESS OTHER WISE NOTED.
- ALL BACK OF CURB RADIUS TO BE 25 FEET.
- ALL AREAS AND DIMENSIONS SHOWN ON THIS PLAN ARE APPROXIMATE UNTIL CONSTRUCTION PLANS AND PLAT ARE COMPLETE.



LEGEND

- D. --- DRAINAGE
- U. --- UTILITY
- L.S. --- LANDSCAPE
- E. --- EASEMENT
- VAR. --- VARIABLE
- R/W --- RIGHT OF WAY
- B.S.L. --- BUILDING SETBACK LINE
- sq. ft. --- SQUARE FEET

Robert J. Coyle
 ROBERT J. COYLE, PS
 PROFESSIONAL SURVEYOR
 STATE OF INDIANA
 PS # LS20900155



Date	1-7-2022
Revisions	1-7-2022
1	REVISIONS BASED UPON TAC MEETING DISCUSSION
2	REVISIONS PER PLAINFIELD STAFF COMMENTS
Designed:	Sym.
Drawn:	R/C
Checked:	JUB
Scale:	R/C
Scale:	1" = 50'
Date:	11/30/21

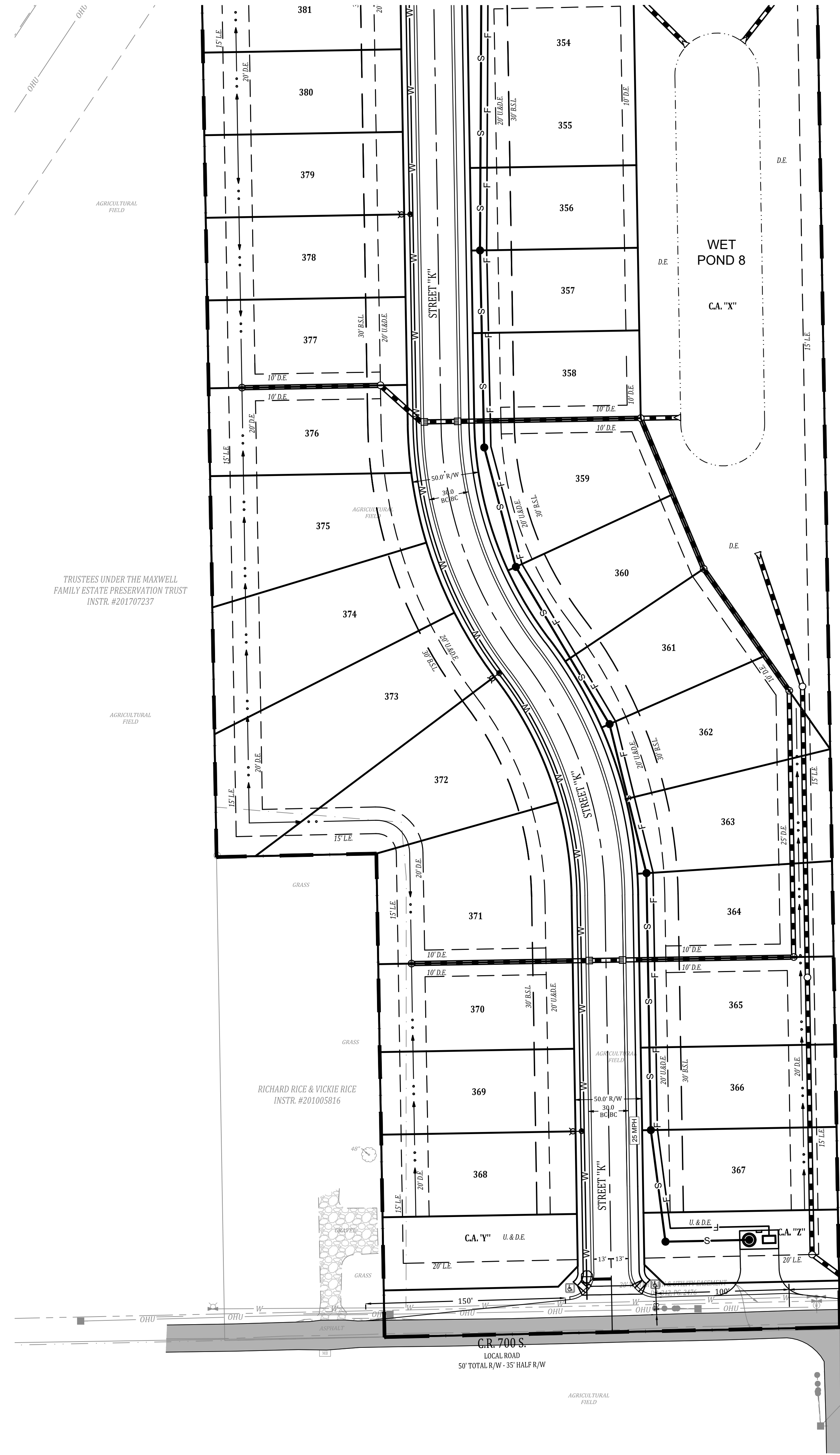
UTILITIES, SIDEWALK, & SIGNAGE PLAN
 TRESSCOTT
 HENDRICKS COUNTY, GUILFORD TOWNSHIP
 PLAINFIELD, INDIANA

NOT FOR CONSTRUCTION

BANNING ENGINEERING
 853 COLUMBIA ROAD, SUITE #101
 PLAINFIELD, IN 46168
 BUS: (317) 707-3700, FAX: (317) 707-3800
 E-Mail: Banning@BanningEngineering.com
 WEB: www.BanningEngineering.com

Project No: 19274
 Sheet No:

SEE SHEET C117 FOR CONTINUATION

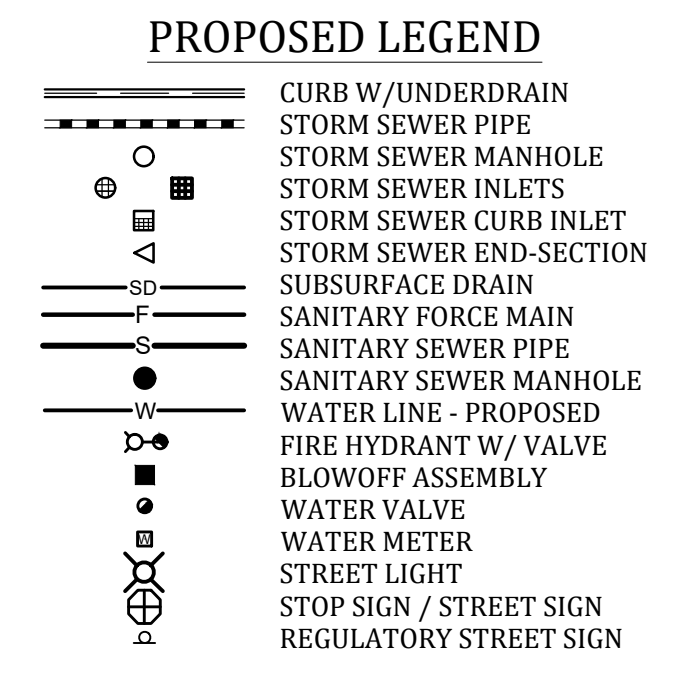
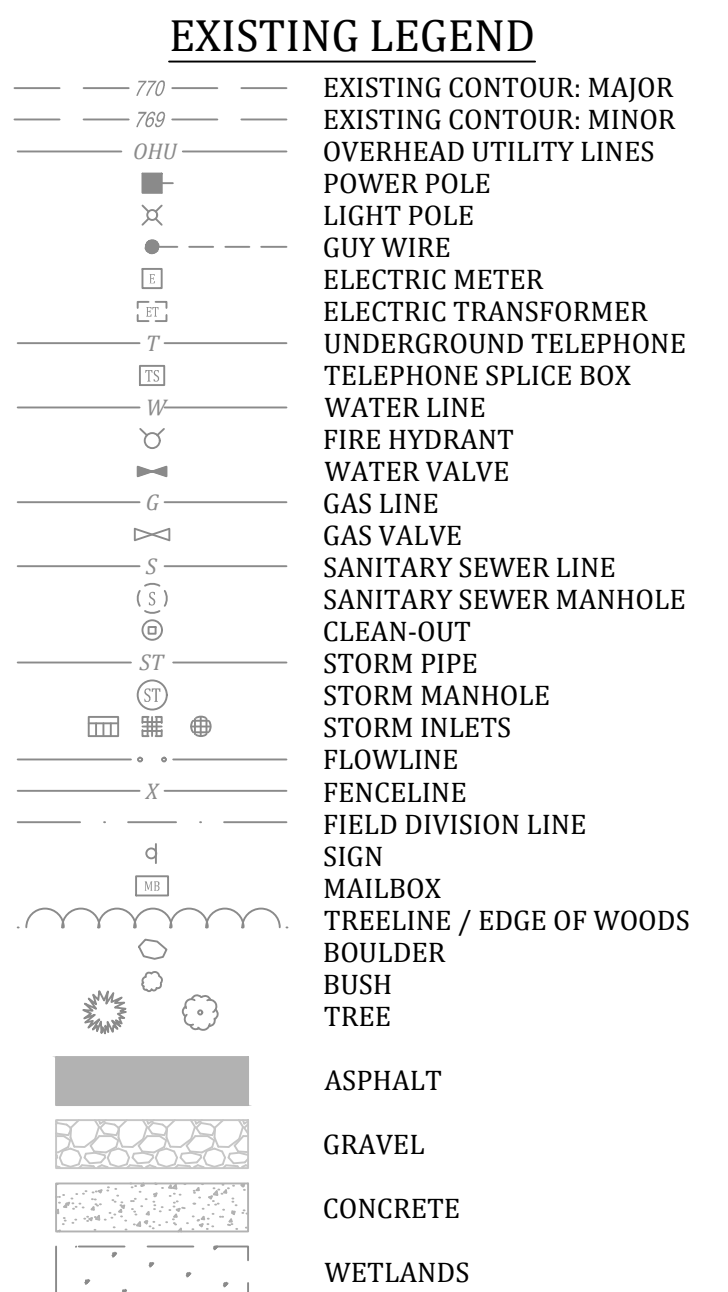


TRUSTEES UNDER THE MAXWELL FAMILY ESTATE PRESERVATION TRUST INSTR. #201707237

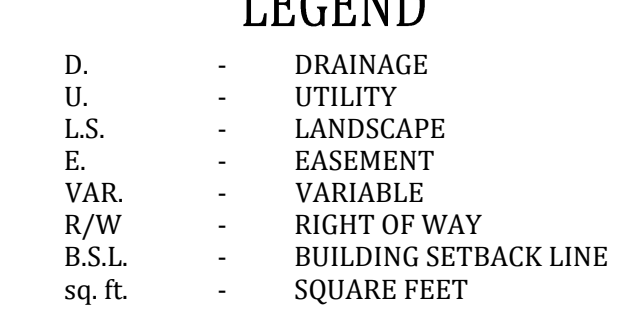
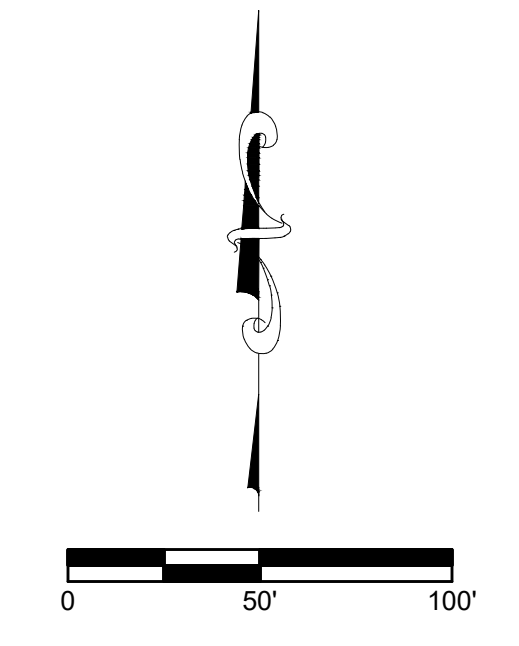
RICHARD RICE & VICKIE RICE INSTR. #201005816

MAXWELL INSTR. #196008702

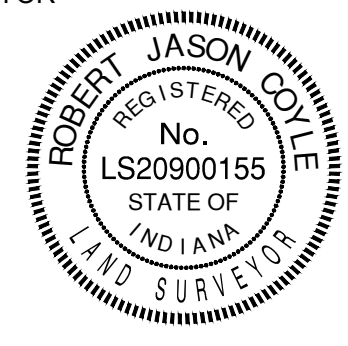
MAXWELL INSTR. #196008702



- ### NOTES:
- SCHOOL DISTRICT: PLAINFIELD
 - CURRENT ZONING DISTRICT: R3 & R4
 - SIDEWALKS WILL BE LOCATED ON BOTH SIDES OF ALL STREETS THROUGHOUT THIS SUBDIVISION, EXCEPT FOR ALONG COUNTY ROADS.
 - STREET SIGNAGE WILL BE IN ACCORDANCE WITH PLAINFIELD STANDARDS FOR LOCATION AND TYPE.
 - THE EROSION CONTROL PLAN WILL MEET ALL NCRS, DNR, AND MS4 REQUIREMENTS AND WILL BE SUBMITTED TO IDEM TO COMPLY WITH RULE 5.
 - ALL INFRASTRUCTURE TO MEET TOWN OF PLAINFIELD STANDARDS AND REQUIREMENTS.
 - ALL SANITARY SEWER MAINS SHALL BE 8" OR 10" PVC SANITARY, UNLESS OTHERWISE NOTED.
 - ALL BACK OF CURB RADIUS TO BE 25 FEET.
 - ALL AREAS AND DIMENSIONS SHOWN ON THIS PLAN ARE APPROXIMATE UNTIL CONSTRUCTION PLANS AND PLAT ARE COMPLETE.



ROBERT JASON COYLE, PS
PROFESSIONAL SURVEYOR
STATE OF INDIANA
PS # LS20900155



SEE BELOW FOR CONTINUATION



© 2021 Microsoft Corporation © 2021 Maxar ©CNES (2021) Distribution Airbus DS

SEE ABOVE FOR CONTINUATION

UTILITIES, SIDEWALK, & SIGNAGE PLAN
TRESSCOTT
HENDRICKS COUNTY, GUILFORD TOWNSHIP
PLAINFIELD, INDIANA

NOT FOR CONSTRUCTION

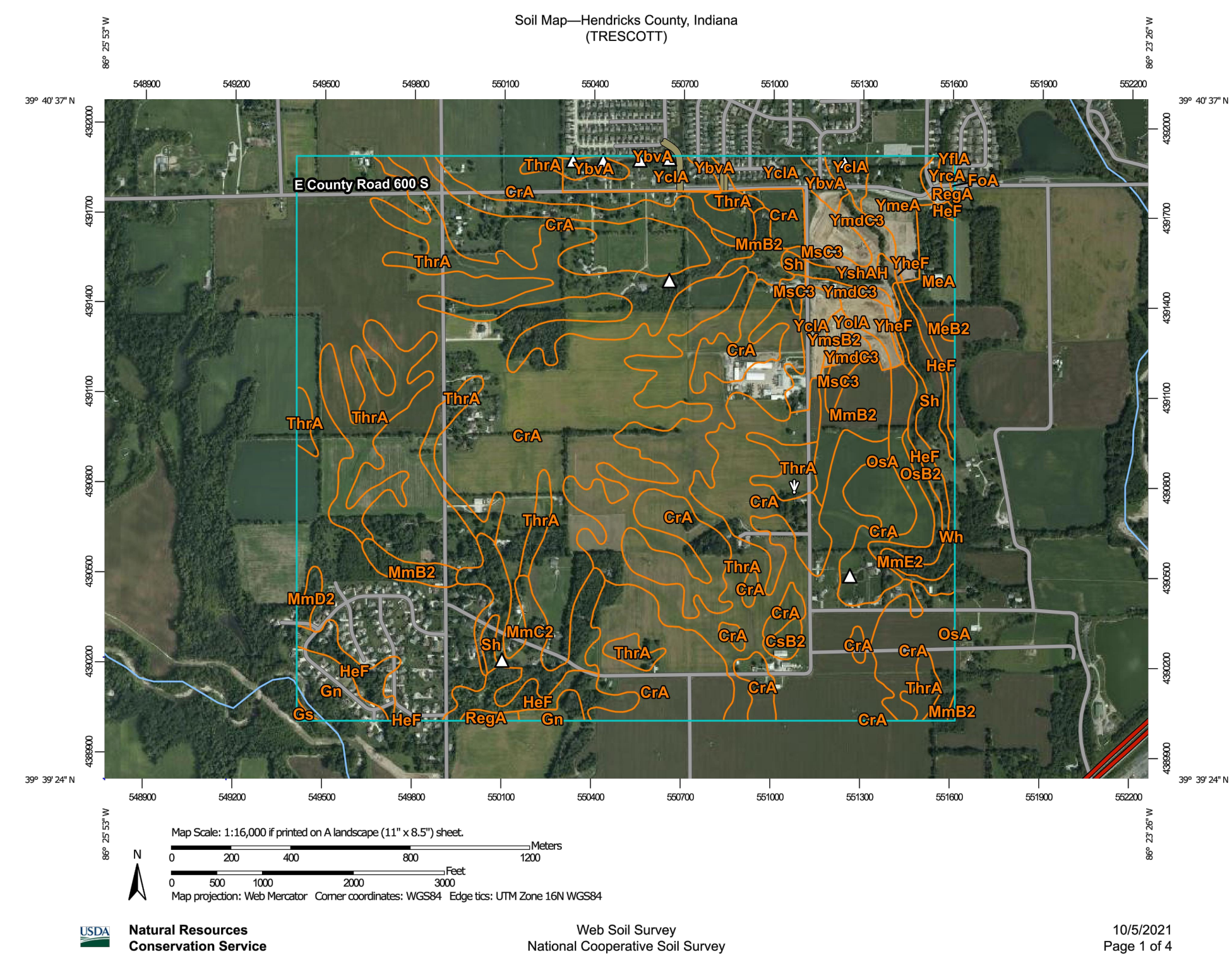
BANNING ENGINEERING
853 COLUMBIA ROAD, SUITE #101
PLAINFIELD, IN 46168
BUS: (317) 707-3700, FAX: (317) 707-3800
E-MAIL: Banning@BanningEngineering.com
WEB: www.BanningEngineering.com

Project No: 19274
Sheet No:

C318

Date	Revisions
1-7-2022	1- REVISIONS BASED UPON TAC MEETING DISCUSSION
2-1-2022	2- REVISIONS PER PLAINFIELD STAFF COMMENTS

Designed:	Drawn:	Checked:	Scale:	Date:
Sym. 1	RJC	JIB	1" = 50'	11/30/21
Sym. 2	RJC	RJC		



Map Unit Legend

Map Unit Symbol	Map Unit Name	Acres in AOI	Percent of AOI
CrA	Crosby silt loam, fine-loamy subsoil, 0 to 2 percent slopes	524.7	51.0%
CsB2	Crosby-Miami silt loams, 2 to 4 percent slopes, eroded	2.8	0.3%
FoA	Fox loam, 0 to 2 percent slopes	0.2	0.0%
Gn	Genesee silt loam, 0 to 2 percent slopes, frequently flooded, very brief duration	14.2	1.4%
Gs	Genesee sandy loam, sandy substratum	0.6	0.1%
HeF	Hennepin loam, 25 to 50 percent slopes	30.4	3.0%
MeA	Martinsville loam, 0 to 2 percent slopes	14.8	1.4%
MeB2	Martinsville loam, 2 to 6 percent slopes, eroded	0.9	0.1%
MmB2	Miami silt loam, 2 to 6 percent slopes, eroded	27.6	2.7%
MmC2	Miami silt loam, 6 to 12 percent slopes, eroded	23.4	2.3%
MmD2	Miami silt loam, 12 to 18 percent slopes, eroded	2.4	0.2%
MmE2	Miami silt loam, 18 to 25 percent slopes, eroded	3.6	0.3%
McC3	Miami clay loam, 6 to 12 percent slopes, severely eroded	4.6	0.4%
OsA	Ockley silt loam, loamy substratum, 0 to 2 percent slopes	10.1	1.0%
OsB2	Ockley silt loam, loamy substratum, 2 to 6 percent slopes, eroded	7.9	0.8%
RegA	Rensselaer clay loam, till substratum, 0 to 2 percent slopes	1.6	0.2%
Sh	Shoals silt loam, 0 to 2 percent slopes, frequently flooded, brief duration	14.1	1.4%
ThrA	Treaty silty clay loam, 0 to 1 percent slopes	253.2	24.6%
Wh	Whitaker silt loam, 0 to 2 percent slopes	0.1	0.0%

Map Unit Symbol	Map Unit Name	Acres in AOI	Percent of AOI
YbvA	Brookston silty clay loam-Urban land complex, 0 to 2 percent slopes	8.3	0.8%
YcA	Crosby silt loam, fine-loamy subsoil-Urban land complex, 0 to 2 percent slopes	39.1	3.8%
YrA	Fox loam-Urban land complex, 0 to 2 percent slopes	0.0	0.0%
YheF	Hennepin loam-Urban land complex, 25 to 50 percent slopes	3.2	0.3%
YmdC3	Miami clay loam-Urban land complex, 6 to 12 percent slopes, severely eroded	11.9	1.2%
YmeA	Martinsville loam-Urban land complex, 0 to 2 percent slopes	14.6	1.4%
YmsB2	Miami silt loam-Urban land complex, 2 to 6 percent slopes, eroded	3.9	0.4%
YoA	Ockley silt loam-Urban land complex, loamy substratum, 0 to 2 percent slopes	4.8	0.5%
YrcA	Rensselaer clay loam-Urban land complex, 0 to 2 percent slopes	1.5	0.1%
YshAH	Shoals silt loam-Urban land complex, frequently flooded, brief duration	4.9	0.5%
Totals for Area of Interest		1,029.2	100.0%

Revisions	Date
1 REVISIONS BASED UPON TAC MEETING DISCUSSION	1-7-2022
2 REVISIONS PER PLAINFIELD STAFF COMMENTS	2-1-2022

DETAILS, SOILS & FIRM MAP
 TRECSCOTT
 HENDRICKS COUNTY, GUILFORD TOWNSHIP
 PLAINFIELD, INDIANA

NOT FOR CONSTRUCTION

BANNING ENGINEERING
 853 COLUMBIA ROAD SUITE #101
 PLAINFIELD, IN 46168
 BUS: (317) 707-3700 FAX: (317) 707-3800
 E-MAIL: Banning@BanningEngineering.com
 WEB: www.BanningEngineering.com

Project No: 19274
 Sheet No:
C400

National Flood Hazard Layer FIRMette



Legend

SEE FIS REPORT FOR DETAILED LEGEND AND INDEX MAP FOR FIRM PANEL LAYOUT

SPECIAL FLOOD HAZARD AREAS

- Without Base Flood Elevation (BFE) Zone A, B, C, D, E, F, G, H, I, J, K, L, M, N, O, P, Q, R, S, T, U, V, W, X, Y, Z
- With BFE or Depth Zone AE, AH, AO, AX, AY, AZ
- Regulatory Floodway

OTHER AREAS OF FLOOD HAZARD

- 0.2% Annual Chance Flood Hazard, Areas of 1% annual chance flood with average depth less than one foot or with drainage areas of less than one square mile Zone B
- Future Conditions 1% Annual Chance Flood Hazard Zone B
- Area with Reduced Flood Risk due to dikes, See Notes, Zone C
- Area with Flood Risk due to Levees Zone D
- Area of Minimal Flood Hazard Zone E
- Effective LOMRs

OTHER AREAS

- Area of Undetermined Flood Hazard Zone D

GENERAL STRUCTURES

- Channel, Culvert, or Storm Sewer
- Levee, Dike, or Floodwall

OTHER FEATURES

- Cross Sections with 1% Annual Chance
- Water Surface Elevation
- Coastal Transient
- Base Flood Elevation Line (BFE)
- Limit of Study
- Jurisdiction Boundary
- Coastal Transient Baseline
- Profile Baseline
- Hydrographic Feature

MAP PANELS

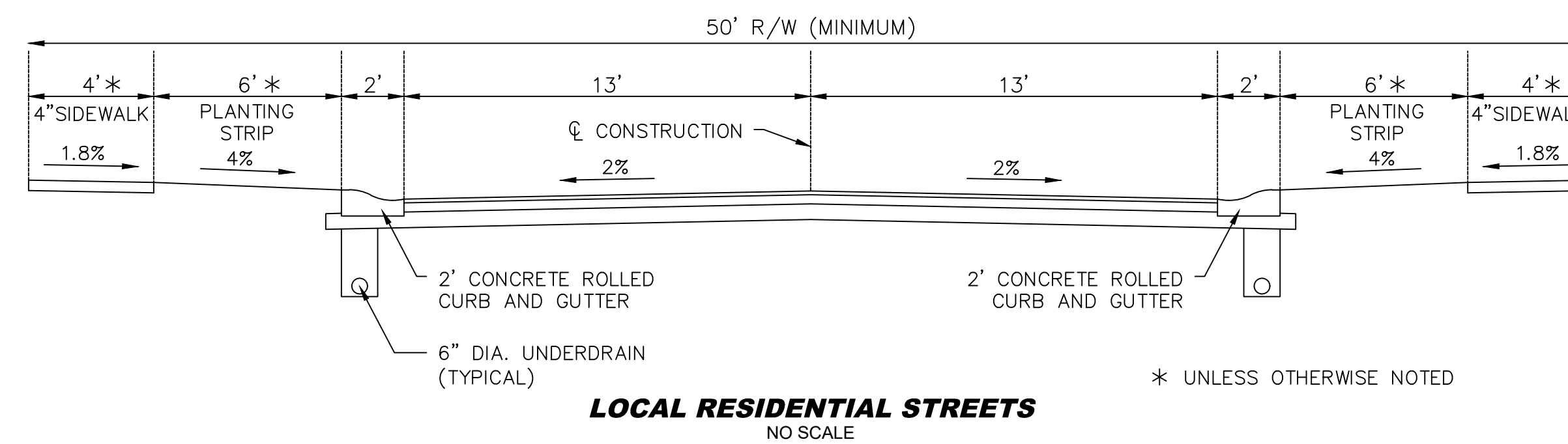
- Digital Data Available
- No Digital Data Available
- Unmapped

The pin displayed on the map is an approximate point selected by the user and does not represent an authoritative property location.

This map complies with FEMA's standards for the use of digital flood maps if it is not void as described below. The basemap shown complies with FEMA's basemap accuracy standards.

The flood hazard information is derived directly from the authoritative NFHL web services provided by FEMA. This map was exported on 10/4/2021 at 8:22 AM and does not reflect changes or amendments subsequent to this date and time. The NFHL and effective information may change or become superseded by new data over time.

This map image is void if the one or more of the following map elements do not appear: basemap imagery, flood zone labels, legend, scale bar, map creation date, community identifiers, FIRM panel number, and FIRM effective date. Map images for unmapped and unmodernized areas cannot be used for regulatory purposes.



LOCAL RESIDENTIAL STREETS
NO SCALE

* UNLESS OTHERWISE NOTED