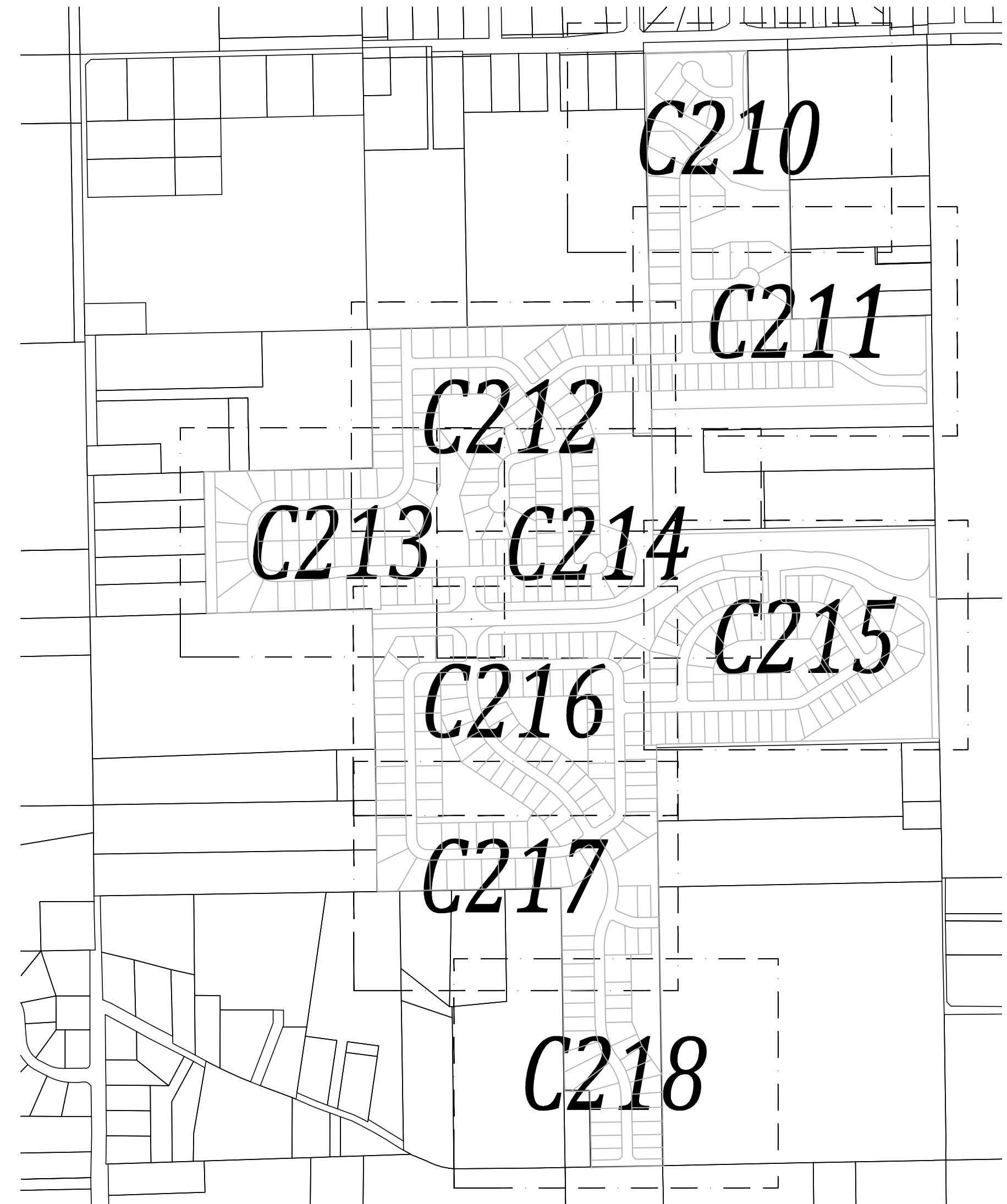
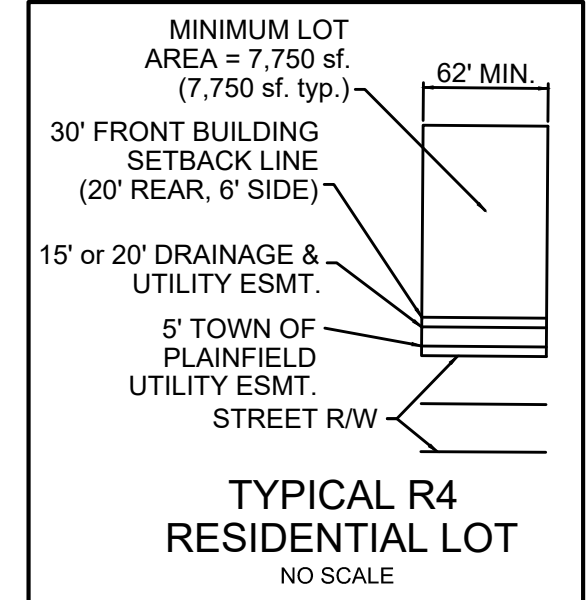
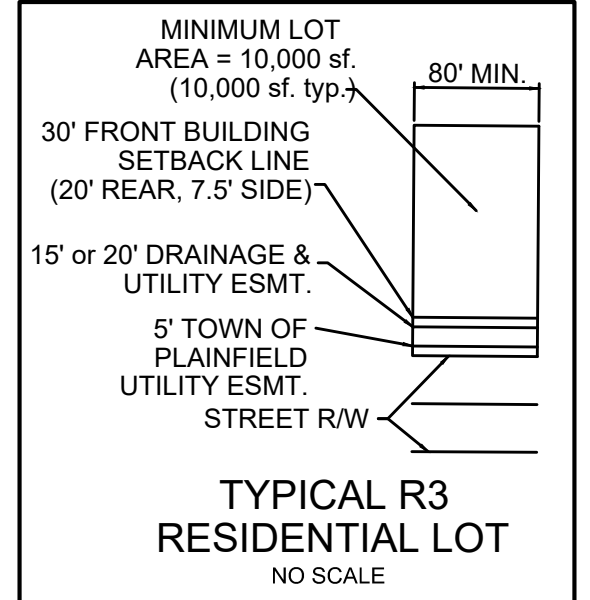
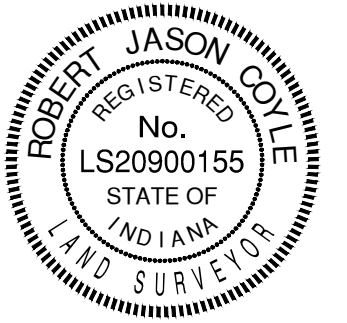


ROBERT JASON COYLE, P.S.
PROFESSIONAL SURVEYOR
STATE OF INDIANA
PS # LS20900155



SHEET KEY MAP

Land Description
Trescott
Part of Section 10, Township 14 North, Range 1 East of the Second Principal Meridian in Hendricks County, Indiana, being the 9.793 acre tract, 17.983 acre tract, 30.348 acre tract and 109.225 acre tract of land shown on the four (4) ALTA Land Title Survey plats of said tracts certified by Jonathan D. Polson, PS #LS21500011 under Banning Engineering's project number 19274 (all references to monuments and courses herein are as shown on said plats of survey) described as follows:

Commencing at a mag nail with washer stamped "Banning Eng. Firm #0060" (hereinafter referred to as "mag nail with washer") marking the northeast corner of the Southwest Quarter of the Northeast Quarter of said Section 10; thence South 88 degrees 41 minutes 56 seconds West along the north line thereof 35.00 feet to the west line of the land of the Town of Plainfield as described in Instrument Number 202110403 in the Office of the Recorder of Hendricks County and the POINT OF BEGINNING; thence South 00 degrees 51 minutes 11 seconds East along said west line 412.88 feet; thence South 88 degrees 43 minutes 49 seconds West 1,304.97 feet to the west line of said Quarter-Quarter; thence South 00 degrees 50 minutes 52 seconds East along said west line 592.55 feet to the north line of the land of Lewis as described in Instrument Number 201827429 in said recorder's office; thence North 89 degrees 43 minutes 49 seconds East along said north line 1,305.02 feet to the west line of the land of the Town of Plainfield as described in Instrument Number 202025088 in said recorder's office; thence South 00 degrees 51 minutes 11 seconds East along said west line 325.08 feet to the south line of said Quarter-Quarter; thence North 88 degrees 43 minutes 49 seconds East along said south line 35.00 feet to a mag nail with washer marking the northeast corner of the Northwest Quarter of the Southeast Quarter of said Section 10; thence South 01 degree 03 minutes 00 seconds East along the east line thereof 669.36 feet to a mag nail with washer marking southeast corner of the North Half of said Quarter-Quarter; thence South 88 degrees 46 minutes 25 seconds West along the south line thereof 1,340.97 feet to a 5/8-inch rebar with cap stamped "Banning Eng. Firm #0060" (hereinafter referred to as "capped rebar") marking the southwest corner of said North Half; thence South 00 degrees 58 minutes 15 seconds East along the west line of the South Half of said Quarter-Quarter 668.35 feet to a capped rebar marking the southwest corner thereof; thence South 00 degrees 58 minutes 15 seconds East along the east line of the Southwest Quarter of said Section 10 a distance of 1,329.83 feet to a Hendricks County Surveyor's disk marking the southeast corner of said Southwest Quarter; thence South 88 degrees 45 minutes 39 seconds West along the south line thereof 342.00 feet to the southeast corner of the land of Rice as described in Instrument Number 201005816 in said recorder's office (the following two (2) calls are along the east and north lines thereof): 1) thence North 00 degrees 58 minutes 15 seconds West 363.00 feet; 2) thence South 88 degrees 45 minutes 39 seconds West 120.00 feet to the east line of the land of the Trustees under the Maxwell Family Estate Preservation Trust as described in Instrument Number 201707237 in said recorder's office; thence North 00 degrees 58 minutes 15 seconds West along said east line 967.09 feet to the south line of Northeast Quarter of said Southwest Quarter; thence South 88 degrees 47 minutes 37 seconds West along said south line 871.35 feet to a capped rebar marking the southwest corner of said Quarter-Quarter; thence North 01 degree 00 minutes 55 seconds West along the west line thereof 1,334.54 feet to a capped rebar marking the northwest corner of said Quarter-Quarter; thence South 88 degrees 42 minutes 04 seconds West along the south line of the Northwest Quarter of said Section 10 a distance of 784.20 feet to the southeast corner of Minor Plat 459 per plat thereof recorded in Instrument Number 199200330 in said recorder's office; thence North 00 degrees 59 minutes 24 seconds West along the east line thereof 671.33 feet to the south line of Minor Plat 1082/17 per plat thereof recorded in Instrument Number 201715212 in said recorder's office (the following two (2) calls are along the south and east lines thereof): 1) thence North 88 degrees 36 minutes 06 seconds East 799.86 feet; 2) thence North 00 degrees 59 minutes 25 seconds West 657.77 feet to the north line of the South Half of said Northwest Quarter; thence North 88 degrees 43 minutes 57 seconds East along said north line 1,322.05 feet to a 6-inch concrete post marking the southwest corner of the Northwest Quarter of the Northeast Quarter of said Section 10; thence North 00 degrees 53 minutes 39 seconds West along the west line thereof 1,277.48 feet to the south line of the land of the Town of Plainfield as described in Instrument Number 201619988 in said recorder's office; thence North 88 degrees 37 minutes 14 seconds East along said south line 478.15 feet to the northwest corner of Minor Plat 101/18 per plat thereof recorded in Instrument Number 201905598 in said recorder's office (the following two (2) calls are along the west and south lines thereof): 1) thence South 00 degrees 56 minutes 13 seconds East 373.71 feet; 2) thence North 88 degrees 37 minutes 14 seconds East 190.03 feet to the east line of the West Half of said Quarter-Quarter; thence South 00 degrees 55 minutes 24 seconds East along said east line 904.68 feet to capped rebar marking the southeast corner said West Half; thence North 88 degrees 41 minutes 55 seconds East along the south line of the Northwest Quarter of the Northeast Quarter of said Section 10 a distance of 636.03 feet to the POINT OF BEGINNING, containing 167.325 acres, more or less.

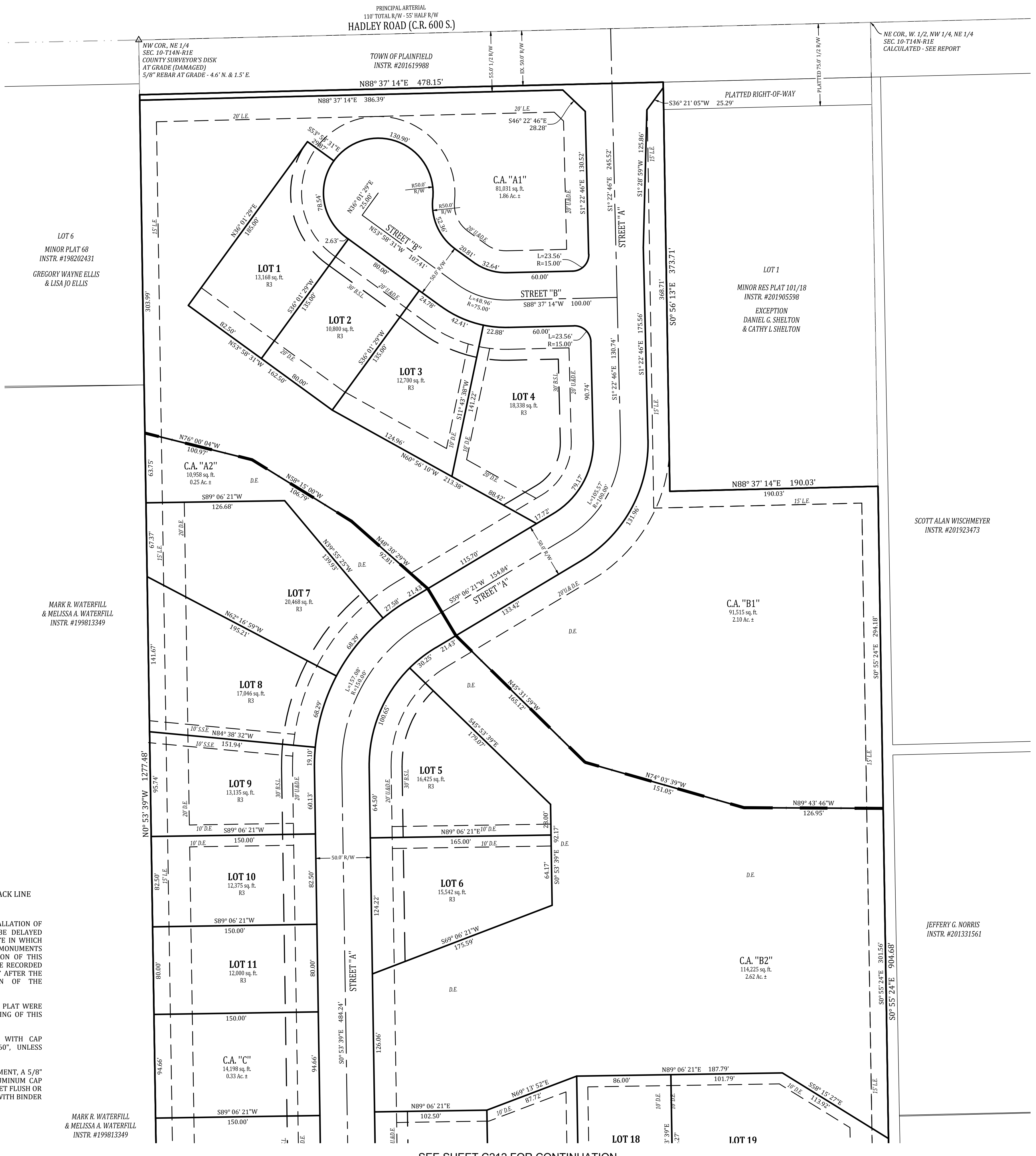
- LEGEND**
- D. - DRAINAGE
 - U. - UTILITY
 - L.S. - LANDSCAPE
 - E. - EASEMENT
 - VAR. - VARIABLE
 - R/W - RIGHT OF WAY
 - B.S.L. - BUILDING SETBACK LINE
 - sq. ft. - SQUARE FEET

PER TITLE 865 I.A.C. 1-12-18, THE INSTALLATION OF THE SUBDIVISION MONUMENTS MAY BE DELAYED FOR UP TO TWO YEARS FROM THE DATE IN WHICH THE PLAT WAS RECORDED. FOR THOSE MONUMENTS NOT INSTALLED PRIOR TO RECORDATION OF THIS PLAT, A MONUMENT AFFIDAVIT WILL BE RECORDED AND CROSS REFERENCED TO THIS PLAT AFTER THE COMPLETION OF THE INSTALLATION OF THE SUBDIVISION MONUMENTATION.

ALL MONUMENTS SHOWN WITHIN THIS PLAT WERE FOUND OR SET PRIOR TO THE RECORDING OF THIS PLAT.

○ DENOTES A 5/8" REBAR, 24" LONG, WITH CAP
○ STAMPED "BANNING ENG FIRM #0060", UNLESS OTHERWISE NOTED.

○ DENOTES A STREET CENTERLINE MONUMENT, A 5/8" DIA. REBAR WITH 1-1/2" TAPERED ALUMINUM CAP
○ STAMPED "BANNING ENG FIRM #0060", SET FLUSH OR A 2" MAG NAIL, TEMPORARY SET FLUSH WITH BINDER COURSE.



LOT 6
MINOR PLAT 68
INSTR. #198202431
GREGORY WAYNE ELLIS
& LISA JO ELLIS

MARK R. WATERFILL
& MELISSA A. WATERFILL
INSTR. #199813349

MARK R. WATERFILL
& MELISSA A. WATERFILL
INSTR. #199813349

LOT 1
MINOR RES PLAT 101/18
INSTR. #201905598
EXCEPTION
DANIEL G. SHELTON
& CATHY L. SHELTON

SCOTT ALAN WISCHMEYER
INSTR. #201923473

JEFFERY G. NORRIS
INSTR. #201331561

SEE SHEET C212 FOR CONTINUATION

Date	1-7-2022
Revisions	2-1-2022
Sym.	1 REVISIONS BASED UPON TAC MEETING DISCUSSION
Drawn	2 REVISIONS PER PLAINFIELD STAFF COMMENTS
Checked	
Scale	1" = 50'
Date	11/30/21

PRIMARY PLAT
TRESMOTT
HENDRICKS COUNTY, GUILFORD TOWNSHIP
PLAINFIELD, INDIANA

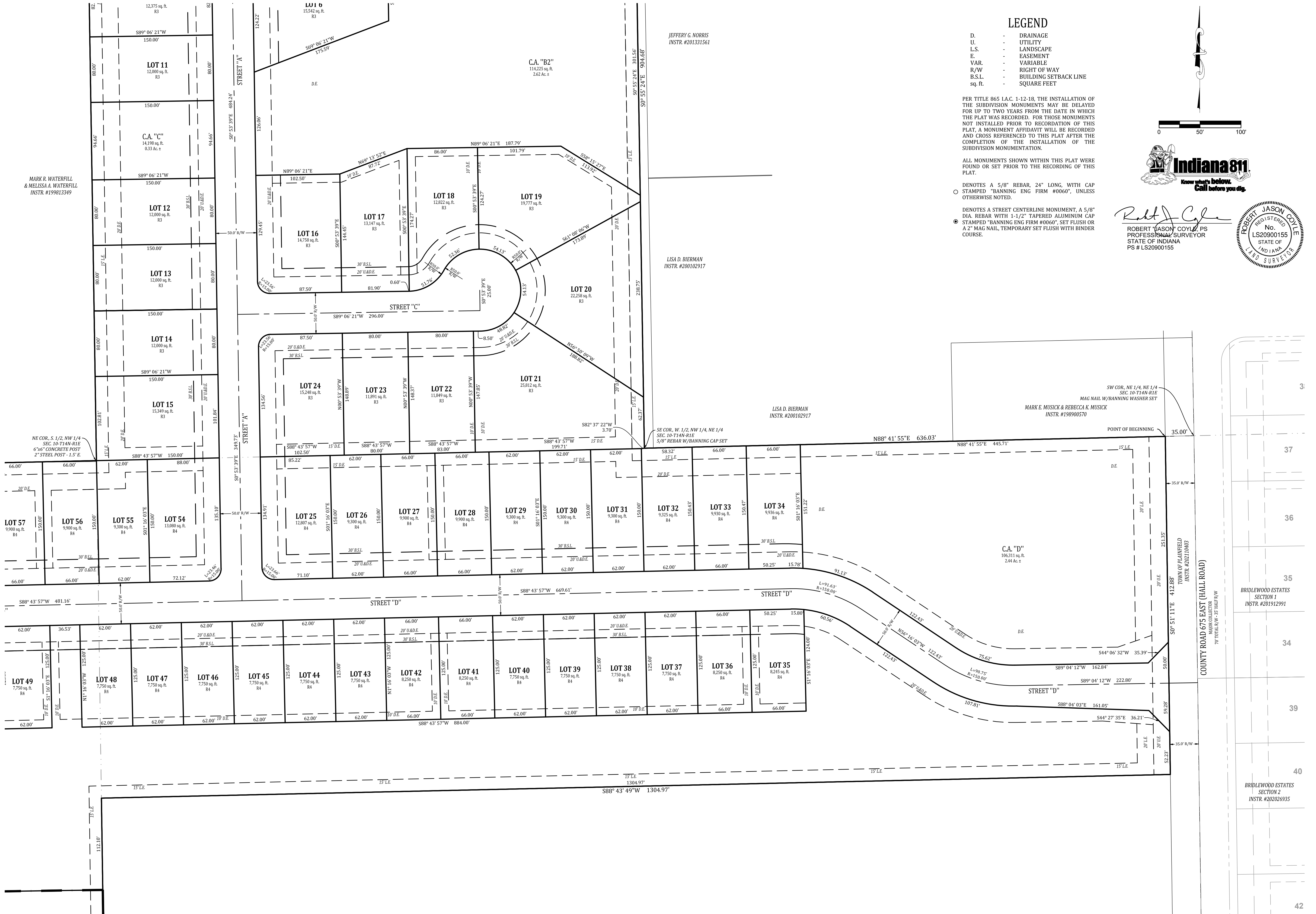
NOT FOR CONSTRUCTION

BANNING ENGINEERING
853 COLUMBIA ROAD SUITE #101
PLAINFIELD, IN 46168
BUS: (317) 707-3700 FAX: (317) 707-3800
E-Mail: Banning@BanningEngineering.com
WEB: www.BanningEngineering.com

Project No: 19274
Sheet No: C210

SEE SHEET C212 FOR CONTINUATION

SEE SHEET C210 FOR CONTINUATION



LEGEND

- D. - DRAINAGE
- U. - UTILITY
- L.S. - LANDSCAPE
- E. - EASEMENT
- VAR. - VARIABLE
- R/W - RIGHT OF WAY
- B.S.L. - BUILDING SETBACK LINE
- sq. ft. - SQUARE FEET

PER TITLE 865 I.A.C. 1-12-18, THE INSTALLATION OF THE SUBDIVISION MONUMENTS MAY BE DELAYED FOR UP TO TWO YEARS FROM THE DATE IN WHICH THE PLAT WAS RECORDED. FOR THOSE MONUMENTS NOT INSTALLED PRIOR TO RECORDATION OF THIS PLAT, A MONUMENT AFFIDAVIT WILL BE RECORDED AND CROSS REFERENCED TO THIS PLAT AFTER THE COMPLETION OF THE INSTALLATION OF THE SUBDIVISION MONUMENTATION.

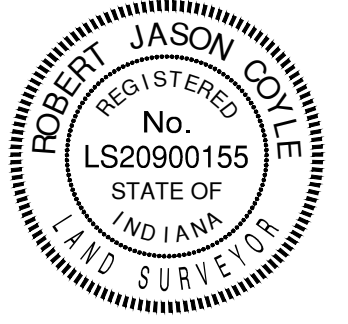
ALL MONUMENTS SHOWN WITHIN THIS PLAT WERE FOUND OR SET PRIOR TO THE RECORDING OF THIS PLAT.

○ DENOTES A 5/8" REBAR, 24" LONG, WITH CAP STAMPED "BANNING ENG FIRM #0060", UNLESS OTHERWISE NOTED.

● DENOTES A STREET CENTERLINE MONUMENT, A 5/8" DIA. REBAR WITH 1-1/2" TAPERED ALUMINUM CAP STAMPED "BANNING ENG FIRM #0060", SET FLUSH OR A 2" MAG NAIL, TEMPORARY SET FLUSH WITH BINDER COURSE.



Robert J. Coyle
 ROBERT "JASON" COYLE, PS
 PROFESSIONAL SURVEYOR
 STATE OF INDIANA
 PS # LS2090155



PRIMARY PLAT
 TRESSCOTT
 HENDRICKS COUNTY, GUILFORD TOWNSHIP
 PLAINFIELD, INDIANA

NOT FOR CONSTRUCTION

BANNING ENGINEERING
 853 COLUMBIA ROAD, SUITE #101
 PLAINFIELD, IN 46168
 BUS: (317) 707-3700, FAX: (317) 707-3800
 E-MAIL: Banning@BanningEngineering.com
 WEB: www.BanningEngineering.com

Project No: 19274
 Sheet No:

Pathwin P:\2019\1927A\Engineering\Cadd\Sheet Files\Primary Plat\1927A-PP-Primary Plat.dwg Feb 01, 2022 - 1:03pm

SEE SHEET C213 FOR CONTINUATION



SEE SHEET 213 FOR CONTINUATION

SEE SHEET C214 FOR CONTINUATION

SEE SHEET C210 FOR LEGENDS.

LEGEND

- D. DRAINAGE
- U. UTILITY
- L.S. LANDSCAPE
- E. EASEMENT
- VAR. VARIABLE
- R/W RIGHT OF WAY
- B.S.L. BUILDING SETBACK LINE
- sq. ft. SQUARE FEET

Robert J. Coyle
 ROBERT JASON COYLE, PS
 PROFESSIONAL SURVEYOR
 STATE OF INDIANA
 PS # LS20900155



Date	Revisions
1-7-2022	1 REVISIONS BASED UPON TAC MEETING DISCUSSION
2-1-2022	2 REVISIONS PER PLAINFIELD STAFF COMMENTS

DESIGNED: Syn. RUC
 DRAWN: JUB
 CHECKED: RUC
 SCALE: 1" = 50'
 DATE: 11/30/21

SEE SHEET C211 FOR CONTINUATION

PRIMARY PLAT
 TRESSCOTT
 HENDRICKS COUNTY, GUILFORD TOWNSHIP
 PLAINFIELD, INDIANA

BANNING ENGINEERING
 853 COLUMBIA ROAD, SUITE #101
 PLAINFIELD, IN 46168
 BUS: (317) 707-3700 FAX: (317) 707-3800
 E-MAIL: Banning@BanningEngineering.com
 WEB: www.BanningEngineering.com

NOT FOR CONSTRUCTION

Project No: 19274
 Sheet No: C212

SEE SHEET C212 FOR CONTINUATION



LEGEND

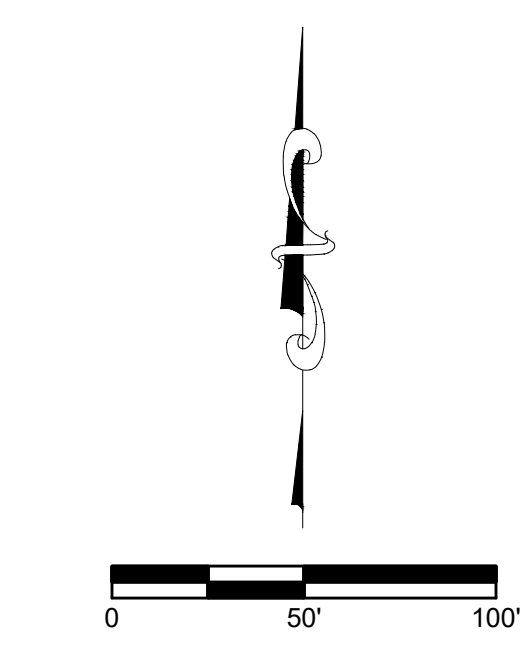
- D. - DRAINAGE
- U. - UTILITY
- L.S. - LANDSCAPE
- E. - EASEMENT
- VAR. - VARIABLE
- R/W - RIGHT OF WAY
- B.S.L. - BUILDING SETBACK LINE
- sq. ft. - SQUARE FEET

PER TITLE 865 I.A.C. 1-12-18, THE INSTALLATION OF THE SUBDIVISION MONUMENTS MAY BE DELAYED FOR UP TO TWO YEARS FROM THE DATE IN WHICH THE PLAT WAS RECORDED. FOR THOSE MONUMENTS NOT INSTALLED PRIOR TO RECORDED OF THIS PLAT, A MONUMENT AFFIDAVIT WILL BE RECORDED AND CROSS REFERENCED TO THIS PLAT AFTER THE COMPLETION OF THE INSTALLATION OF THE SUBDIVISION MONUMENTATION.

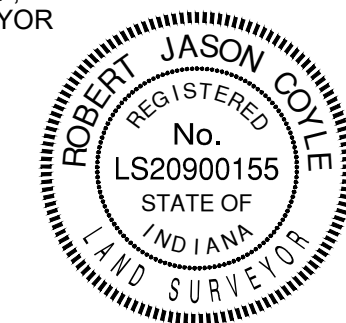
ALL MONUMENTS SHOWN WITHIN THIS PLAT WERE FOUND OR SET PRIOR TO THE RECORDING OF THIS PLAT.

○ DENOTES A 5/8" REBAR, 24" LONG, WITH CAP STAMPED "BANNING ENG FIRM #0060", UNLESS OTHERWISE NOTED.

● DENOTES A STREET CENTERLINE MONUMENT, A 5/8" DIA. REBAR WITH 1-1/2" TAPERED ALUMINUM CAP STAMPED "BANNING ENG FIRM #0060", SET FLUSH OR A 2" MAG NAIL, TEMPORARY SET FLUSH WITH BINDER COURSE.



Robert J. Coyle
 ROBERT JASON COYLE, P.S.
 PROFESSIONAL SURVEYOR
 STATE OF INDIANA
 PS # LS20900155



SEE SHEET C213 FOR CONTINUATION

SEE SHEET C216 FOR CONTINUATION

SEE SHEET C215 FOR CONTINUATION

PRIMARY PLAT
 TRESSCOTT
 HENDRICKS COUNTY, GUILFORD TOWNSHIP
 PLAINFIELD, INDIANA

NOT FOR CONSTRUCTION

BANNING ENGINEERING
 853 COLUMBIA ROAD, SUITE #101
 PLAINFIELD, IN 46168
 BUS: (317) 707-3700, FAX: (317) 707-3800
 E-MAIL: Banning@BanningEngineering.com
 WEB: www.BanningEngineering.com

Project No: 19274
 Sheet No:

C214

Date	Revisions
1-7-2022	1- REVISIONS BASED UPON TAC MEETING DISCUSSION
2-1-2022	2- REVISIONS PER PLAINFIELD STAFF COMMENTS

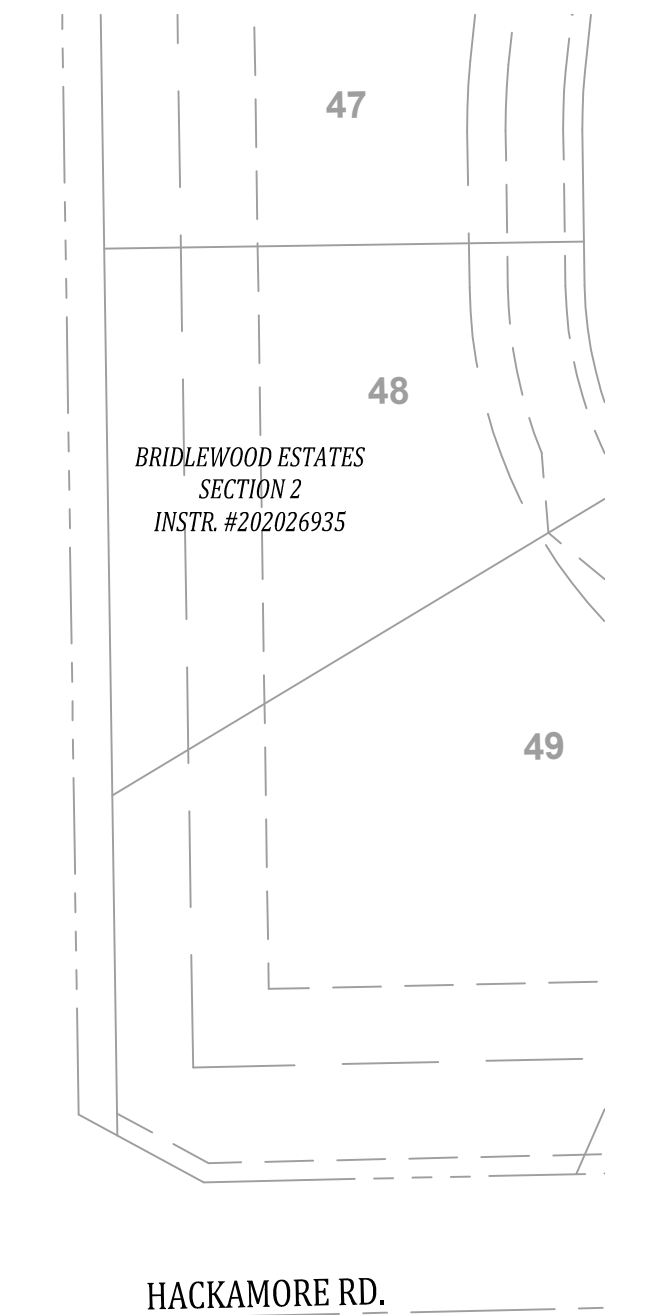
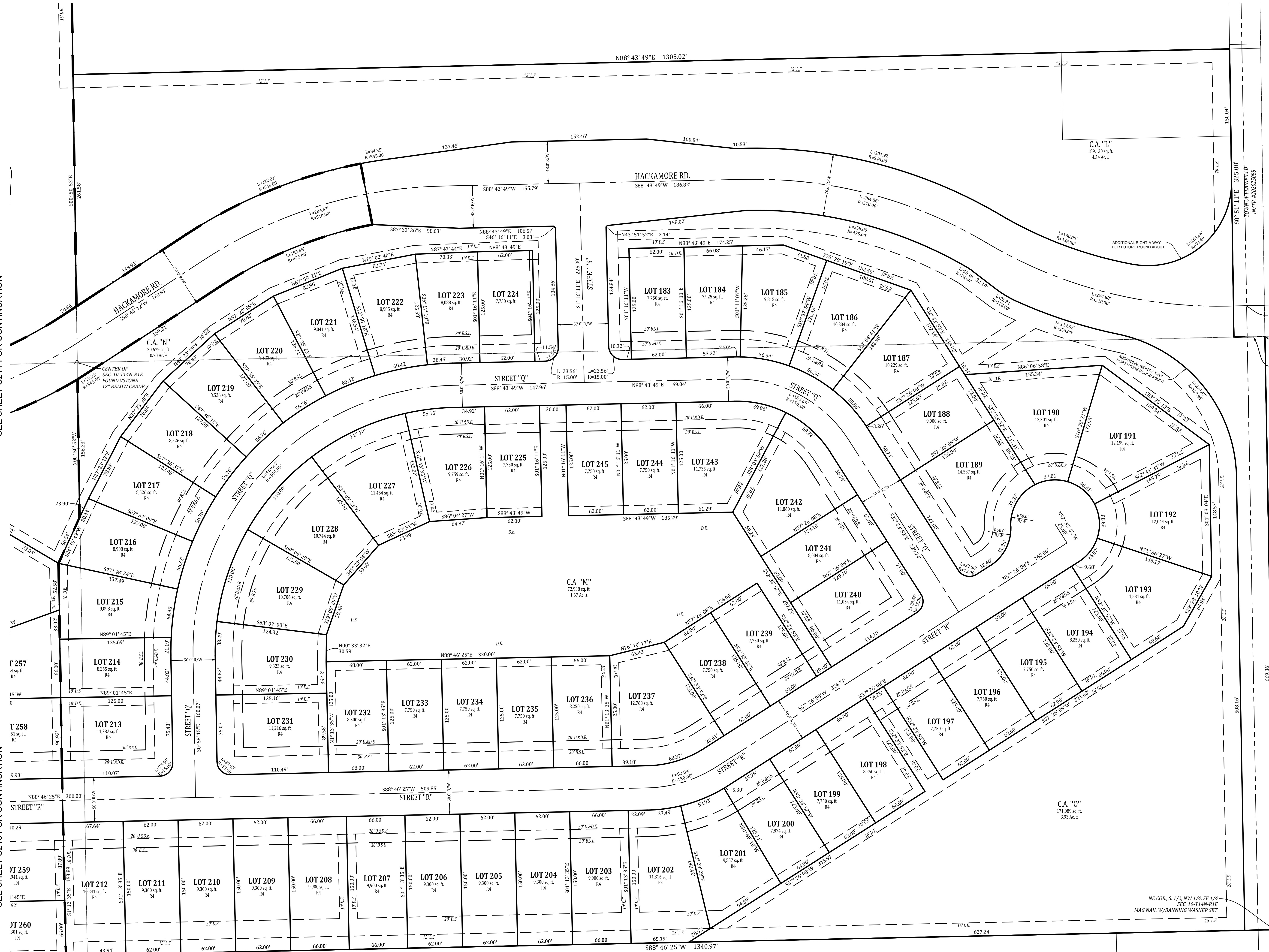
Sym.	Designated	Scale	Date
1	R/C	1" = 50'	1-13-2021
2	J/C		
	Checked:		
	Scale:		
	Date:		

Baldwin, P.:\2019\19274\Engineering\Cadd\Sheet Files\Primary Plat\19274-PP-Primary Plat.dwg Feb 01, 2022 - 1:04pm
 Project No: 19274
 Sheet No:

Plotwin P:\2019\1927A\Engineering\Cadd\Sheet Files\Primary Plat\1927A-PP-Primary Plat.dwg Feb 01, 2022 = 1:25pm

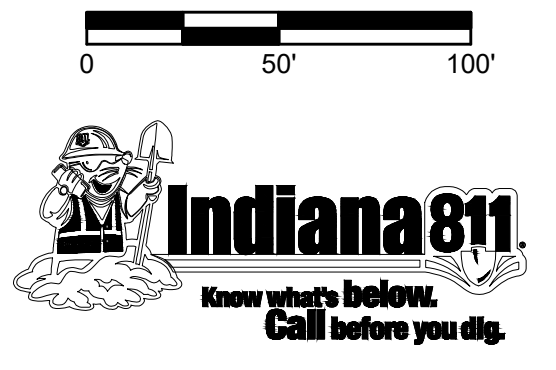
SEE SHEET C214 FOR CONTINUATION

SEE SHEET C216 FOR CONTINUATION



SE COR., SW 1/4, NE 1/4
SEC. 10-T14N-R1E
MAG NAIL W/BANNING WASHER SET
N88° 43' 49" E
35.00'

COUNTY ROAD 675 EAST (HALL ROAD)
MAJOR COLLECTOR
70' TOTAL R/W - 35' HAIR R/W



SEE SHEET C210 FOR LEGEND.

Robert Jason Coyle
ROBERT JASON COYLE, PS
PROFESSIONAL SURVEYOR
STATE OF INDIANA
PS # LS20900155



JOHN A. HALL & CHASTIDY A. HALL
INSTR. #199626565

JOHN A. HALL & CHASTIDY A. HALL
INSTR. #199626563

Date	Revisions
1-7-2022	1 REVISIONS BASED UPON TAC MEETING DISCUSSION
2-1-2022	2 REVISIONS PER PLAINFIELD STAFF COMMENTS

PRIMARY PLAT
TRESSCOTT
HENDRICKS COUNTY, GUILFORD TOWNSHIP
PLAINFIELD, INDIANA

NOT FOR CONSTRUCTION

BANNING ENGINEERING
853 COLUMBIA ROAD SUITE #101
PLAINFIELD, IN 46168
BUS: (317) 707-3700 FAX: (317) 707-3800
E-MAIL: Banning@BanningEngineering.com
WEB: www.BanningEngineering.com

Project No: 19274
Sheet No:

C215

SEE SHEET C213 FOR CONTINUATION

SEE SHEET C214 FOR CONTINUATION



SEE SHEET C217 FOR CONTINUATION

SEE SHEET C217 FOR CONTINUATION

Date	1-7-2022
Revisions	1-7-2022
1	REVISIONS BASED UPON TAC MEETING DISCUSSION
2	REVISIONS PER PLAINFIELD STAFF COMMENTS
3	
4	
5	
6	
7	
8	
9	
10	
11	
12	
13	
14	
15	
16	
17	
18	
19	
20	
21	
22	
23	
24	
25	
26	
27	
28	
29	
30	
31	
32	
33	
34	
35	
36	
37	
38	
39	
40	
41	
42	
43	
44	
45	
46	
47	
48	
49	
50	
51	
52	
53	
54	
55	
56	
57	
58	
59	
60	
61	
62	
63	
64	
65	
66	
67	
68	
69	
70	
71	
72	
73	
74	
75	
76	
77	
78	
79	
80	
81	
82	
83	
84	
85	
86	
87	
88	
89	
90	
91	
92	
93	
94	
95	
96	
97	
98	
99	
100	

DESIGNED: **SYN.**
 DRAWN: **R.C.**
 CHECKED: **J.B.**
 SCALE: **1" = 50'**
 DATE: **11/30/21**

PROJECT: **PRIMARY PLAT**
TRESCOTT
 HENDRICKS COUNTY, GUILFORD TOWNSHIP
 PLAINFIELD, INDIANA

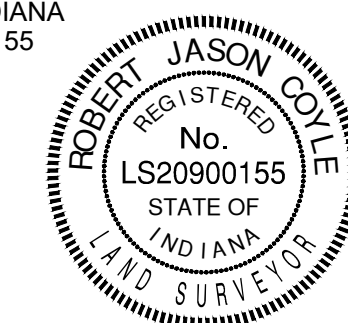
NOT FOR CONSTRUCTION

BANNING ENGINEERING
 853 COLUMBIA ROAD, SUITE #101
 PLAINFIELD, IN 46168
 BUS: (317) 707-3700 FAX: (317) 707-3800
 E-MAIL: Banning@BanningEngineering.com
 WEB: www.BanningEngineering.com



SEE SHEET C210 FOR LEGEND.

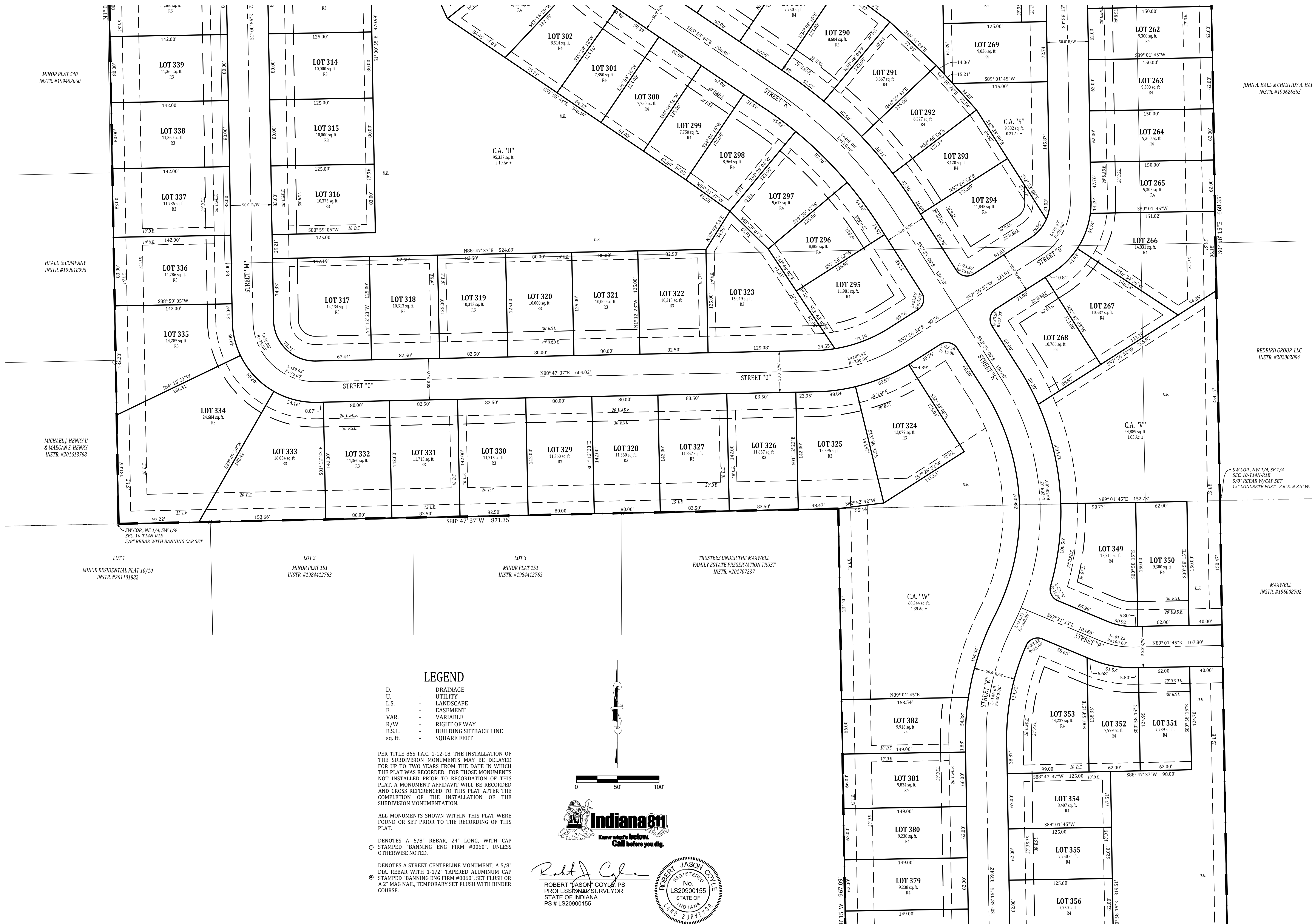
Robert Jason Coyle
 ROBERT JASON COYLE, PS
 PROFESSIONAL SURVEYOR
 STATE OF INDIANA
 PS # LS2090155



Project No: 19274
 Sheet No:

SEE SHEET C216 FOR CONTINUATION

SEE SHEET C216 FOR CONTINUATION



MINOR PLAT 540
INSTR. #199402060

HEALD & COMPANY
INSTR. #199018995

MICHAEL J. HENRY II
& MARGAN S. HENRY
INSTR. #201613768

SW COR., NE 1/4, SW 1/4
SEC. 10-T14N-R1E
5/8" REBAR WITH BANNING CAP SET

LOT 1
MINOR RESIDENTIAL PLAT 10/10
INSTR. #201101882

LOT 2
MINOR PLAT 151
INSTR. #1984412763

LOT 3
MINOR PLAT 151
INSTR. #1984412763

TRUSTEES UNDER THE MAXWELL
FAMILY ESTATE PRESERVATION TRUST
INSTR. #20170737

JOHN A. HALL & CHASTIDY A. HALL
INSTR. #199626565

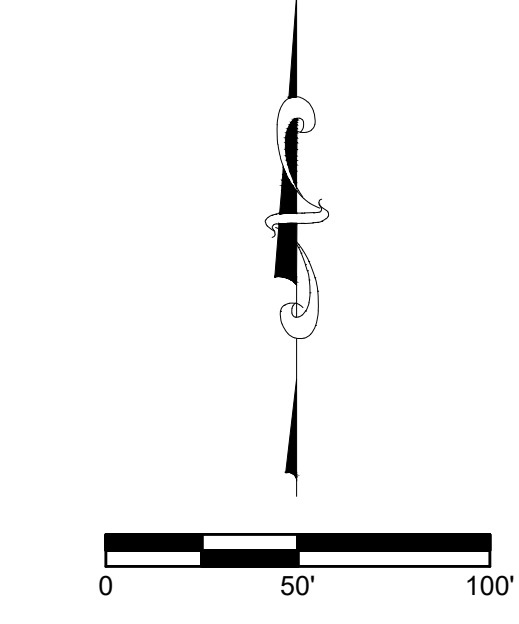
REDBIRD GROUP, LLC
INSTR. #202002094

SW COR., NW 1/4, SE 1/4
SEC. 10-T14N-R1E
5/8" REBAR W/CAP SET
15" CONCRETE POST - 2.6' S & 3.3' W.

MAXWELL
INSTR. #196008702

LEGEND

- D. - DRAINAGE
 - U. - UTILITY
 - L.S. - LANDSCAPE
 - E. - EASEMENT
 - VAR. - VARIABLE
 - R/W - RIGHT OF WAY
 - B.S.L. - BUILDING SETBACK LINE
 - sq. ft. - SQUARE FEET
- PER TITLE 865 I.A.C. 1-12-18, THE INSTALLATION OF THE SUBDIVISION MONUMENTS MAY BE DELAYED FOR UP TO TWO YEARS FROM THE DATE IN WHICH THE PLAT WAS RECORDED. FOR THOSE MONUMENTS NOT INSTALLED PRIOR TO RECORDATION OF THIS PLAT, A MONUMENT AFFIDAVIT WILL BE RECORDED AND CROSS REFERENCED TO THIS PLAT AFTER THE COMPLETION OF THE INSTALLATION OF THE SUBDIVISION MONUMENTATION.
- ALL MONUMENTS SHOWN WITHIN THIS PLAT WERE FOUND OR SET PRIOR TO THE RECORDING OF THIS PLAT.
- DENOTES A 5/8" REBAR, 24" LONG, WITH CAP STAMPED "BANNING ENG FIRM #0060", UNLESS OTHERWISE NOTED.
 - DENOTES A STREET CENTERLINE MONUMENT, A 5/8" DIA. REBAR WITH 1-1/2" TAPERED ALUMINUM CAP STAMPED "BANNING ENG FIRM #0060", SET FLUSH OR A 2" MAG NAIL, TEMPORARY SET FLUSH WITH BINDER COURSE.



Robert Jason Coyle
 ROBERT JASON COYLE, PS
 PROFESSIONAL SURVEYOR
 STATE OF INDIANA
 PS # LS20900155

REGISTERED
 No. LS20900155
 STATE OF INDIANA
 LAND SURVEYOR

SEE SHEET C218 FOR CONTINUATION

Date	Revisions
1-7-2022	1 REVISIONS BASED UPON TAC MEETING DISCUSSION
2-1-2022	2 REVISIONS PER PLAINFIELD STAFF COMMENTS

Designed: RUC
 Drawn: JUB
 Checked: RUC
 Scale: 1" = 50'
 Date: 11/30/21

PRIMARY PLAT
 TRECSCOTT
 HENDRICKS COUNTY, GUILFORD TOWNSHIP
 PLAINFIELD, INDIANA

NOT FOR CONSTRUCTION

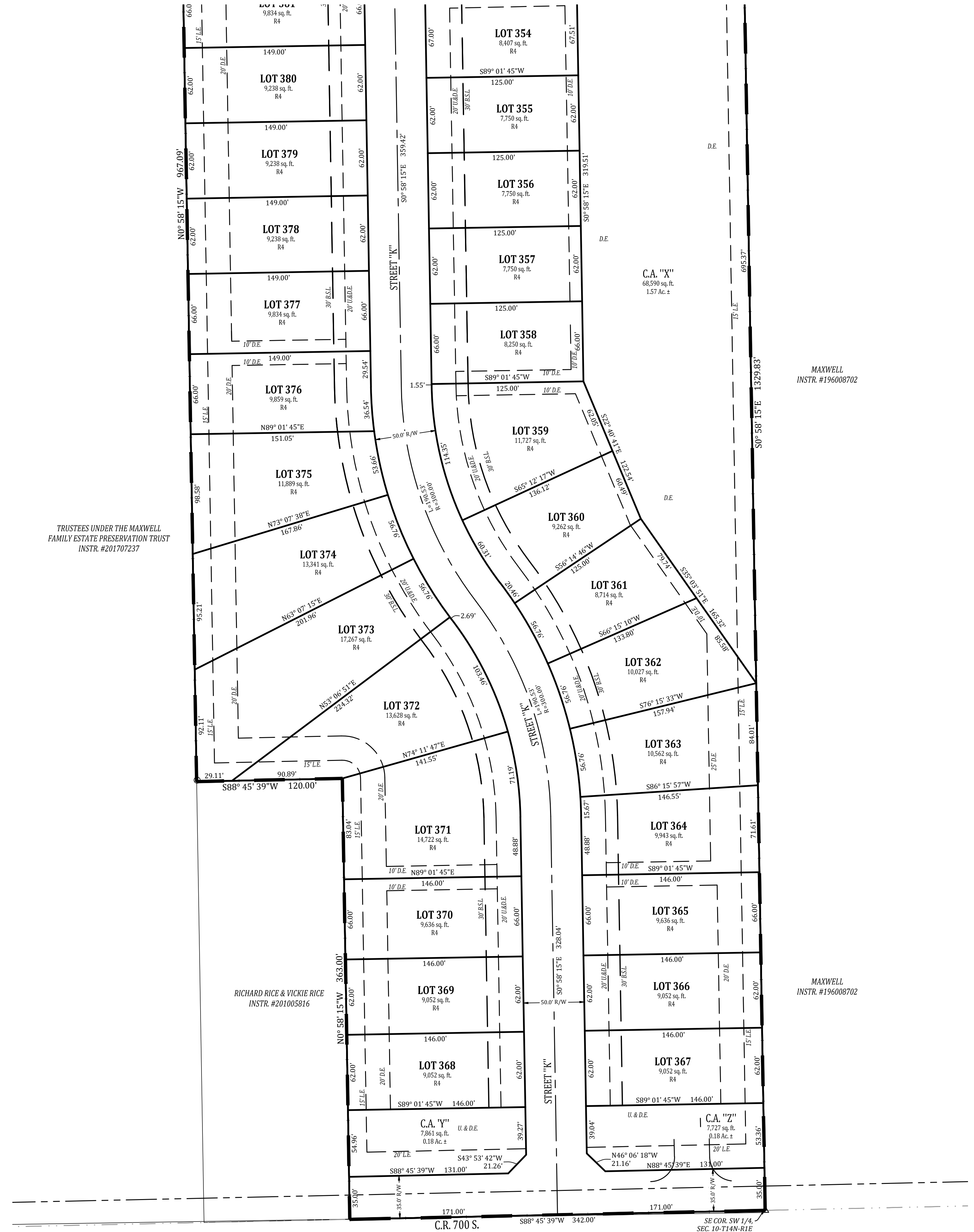
BANNING ENGINEERING
 853 COLUMBIA ROAD, SUITE #101
 PLAINFIELD, IN 46168
 BUS: (317) 707-3700, FAX: (317) 707-3800
 E-Mail: Banning@BanningEngineering.com
 WEB: www.BanningEngineering.com

Project No: 19274
 Sheet No:

C217

Pathwin P:\2019\1927A\Engineering\Cadd\Sheet Files\Primary Plat\1927A-PP-Primary Plat.dwg Feb 01, 2022 - 1:05pm

SEE SHEET C217 FOR CONTINUATION



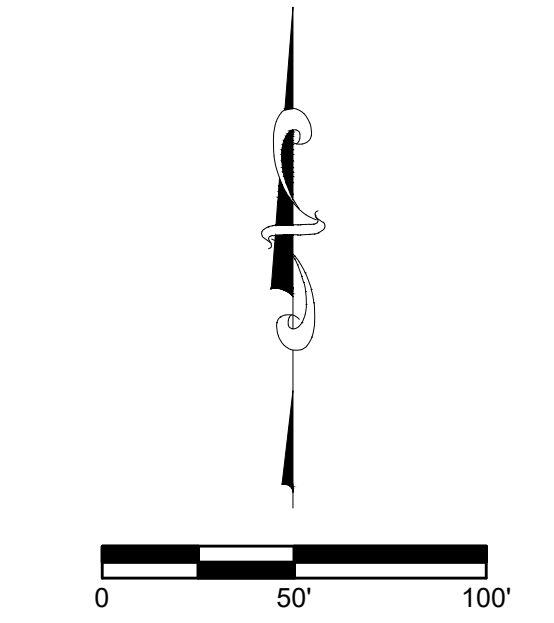
- LEGEND**
- D. - DRAINAGE
 - U. - UTILITY
 - L.S. - LANDSCAPE
 - E. - EASEMENT
 - VAR. - VARIABLE
 - R/W - RIGHT OF WAY
 - B.S.L. - BUILDING SETBACK LINE
 - sq. ft. - SQUARE FEET

PER TITLE 865 I.A.C. 1-12-18, THE INSTALLATION OF THE SUBDIVISION MONUMENTS MAY BE DELAYED FOR UP TO TWO YEARS FROM THE DATE IN WHICH THE PLAT WAS RECORDED. FOR THOSE MONUMENTS NOT INSTALLED PRIOR TO RECORDATION OF THIS PLAT, A MONUMENT AFFIDAVIT WILL BE RECORDED AND CROSS REFERENCED TO THIS PLAT AFTER THE COMPLETION OF THE INSTALLATION OF THE SUBDIVISION MONUMENTATION.

ALL MONUMENTS SHOWN WITHIN THIS PLAT WERE FOUND OR SET PRIOR TO THE RECORDING OF THIS PLAT.

○ DENOTES A 5/8" REBAR, 24" LONG, WITH CAP STAMPED "BANNING ENG FIRM #0060", UNLESS OTHERWISE NOTED.

● DENOTES A STREET CENTERLINE MONUMENT, A 5/8" DIA. REBAR WITH 1-1/2" TAPERED ALUMINUM CAP STAMPED "BANNING ENG FIRM #0060", SET FLUSH OR A 2" MAG NAIL, TEMPORARY SET FLUSH WITH BINDER COURSE.



Robert Jason Coyle
 ROBERT JASON COYLE, PS
 PROFESSIONAL SURVEYOR
 STATE OF INDIANA
 PS # LS20900155

REGISTERED
 No. LS20900155
 STATE OF INDIANA
 LAND SURVEYOR

Date	Revisions
1-7-2022	REVISIONS BASED UPON TAC MEETING DISCUSSION
2-1-2022	REVISIONS PER PLAINFIELD STAFF COMMENTS

Designed:	Sym.
R/C	1
J/B	2

Drawn:	Checked:	Scale:	Date:
		1" = 50'	11/30/21

PRIMARY PLAT
 TRESSCOTT
 HENDRICKS COUNTY, GUILFORD TOWNSHIP
 PLAINFIELD, INDIANA

NOT FOR CONSTRUCTION

BANNING ENGINEERING
 853 COLUMBIA ROAD, SUITE #101
 PLAINFIELD, IN 46168
 BUS: (317) 707-3700, FAX: (317) 707-3800
 E-MAIL: Banning@BanningEngineering.com
 WEB: www.BanningEngineering.com

Project No: 19274
 Sheet No:

C218