

COPYRIGHT CARTER ENGINEERING CONSULTANTS, INC. ALL RIGHTS RESERVED. NO PART OF THIS DOCUMENT MAY BE REPRODUCED IN ANY FORM OR FASHION OR BY ANY MEANS WITHOUT PRIOR CONSENT, AGREEMENT AND WRITTEN PERMISSION FROM CARTER ENGINEERING CONSULTANTS, INC.

LOT 21
MAPLE GROVE SUB.
P.B. 4, PG. 35
ARO PROPERTIES, LLC
INSTR. #202009766
ZONED: R4

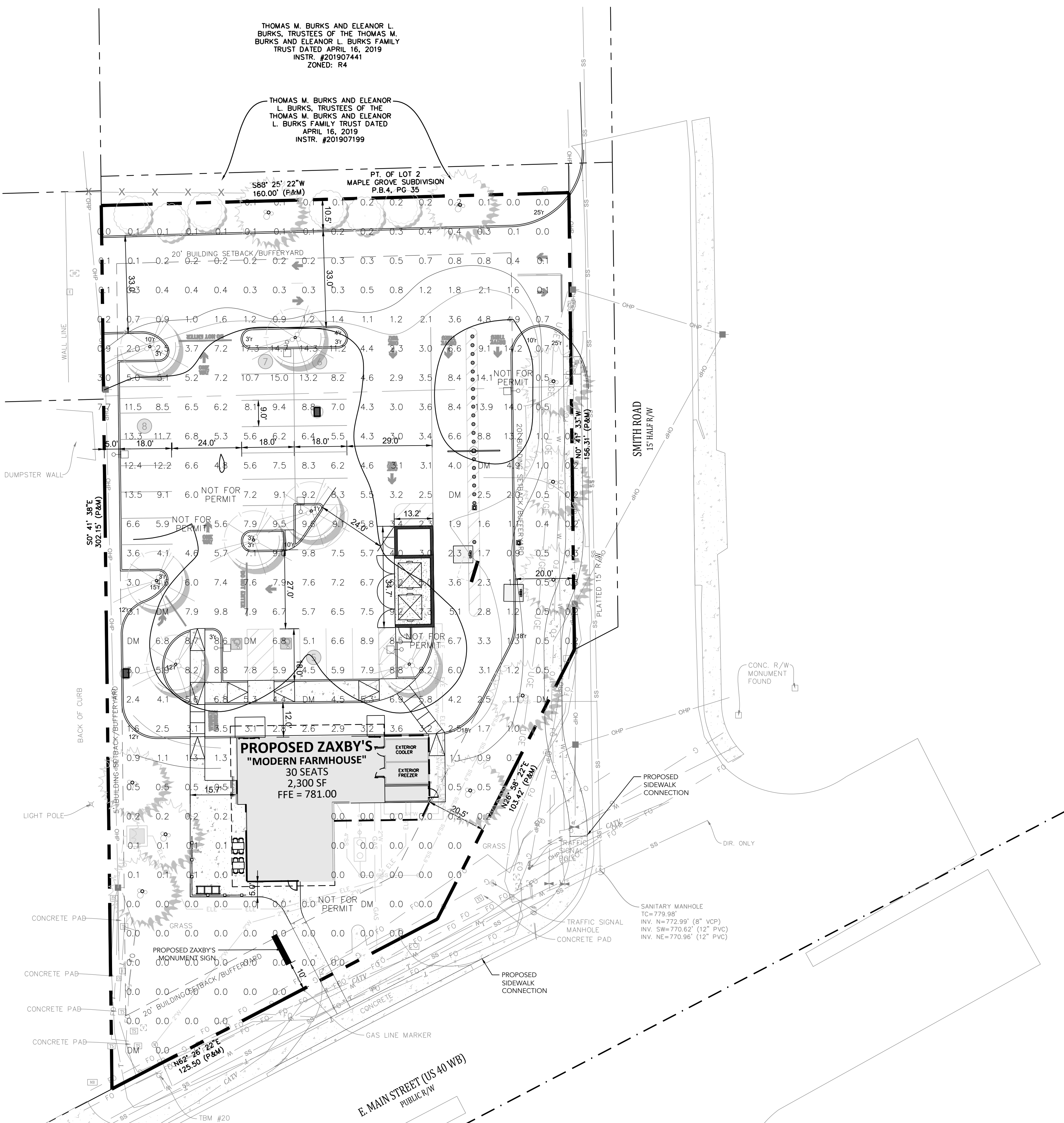
LOT 22
MAPLE GROVE SUB.
P.B. 4, PG. 35
DUSTIN A. FISH
INSTR. #202105695
ZONED: GC

PREP TIRE STORE - PLAINFIELD LLC
INSTR. #201825107
LOT 23
MAPLE GROVE SUB.
P.B. 4, PG. 35
ZONED: GC

THOMAS M. BURKS AND ELEANOR L.
BURKS, TRUSTEES OF THE THOMAS M.
BURKS AND ELEANOR L. BURKS FAMILY
TRUST DATED APRIL 16, 2019
INSTR. #201907441
ZONED: R4

THOMAS M. BURKS AND ELEANOR
L. BURKS, TRUSTEES OF THE
THOMAS M. BURKS AND ELEANOR
L. BURKS FAMILY TRUST DATED
APRIL 16, 2019
INSTR. #201907199

PROPOSED ZAXBY'S
"MODERN FARMHOUSE"
30 SEATS
2,300 SF
FFE = 781.00

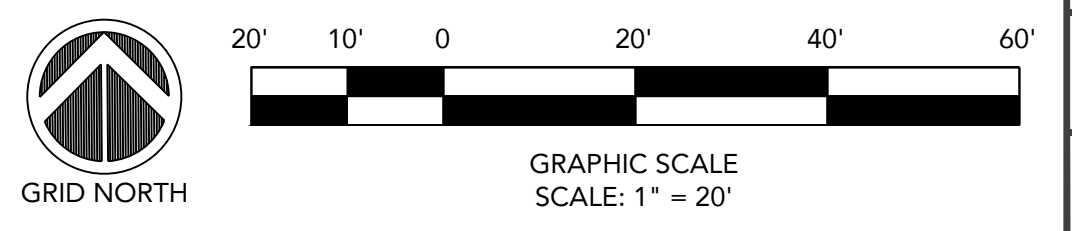


GENERAL
PHOTOMETRIC
SCHEDULE

DME	3.40
MAXIMUM FOOT-CANDLES	17.3
MINIMUM FOOT-CANDLES	0.0
MINIMUM TO MAXIMUM FC RATIO	0.00
MAXIMUM TO MINIMUM FC RATIO	17.28 / 0.00
AVERAGE TO MINIMUM FC RATIO	3.40 / 0.00

LUMINAIRE SCHEDULE

CALLOUT	SYMBOL	LAMP	DESCRIPTION	MODEL	VOLTS	QUANTITY	LUMENS/LAMP	LAMP DEPRECIATION
T4-BZ-HSS		(4) 176W	PREVAIL XL AREA AND ROADWAY LUMINAIRE(4) 70 CRI, 4000K LEDS AND TYPE IV OPTICS WITH HOUSE SIDE SHIELD, BRONZE PAINTED FINISH, 12 FT. HEIGHT.	COOPER LIGHTING SOLUTIONS - LUMARK (FORMERLY EATON), PRV-XL-C75-D-UNV-T4-BZ-HSS	120V 1P 2W	3	5920	0.9
T5-BZ		(4) 176W	PREVAIL XL AREA AND ROADWAY LUMINAIRE(4) 70 CRI, 4000K LEDS AND TYPE V OPTICS, BRONZE PAINTED FINISH, 12FT. HEIGHT.	COOPER LIGHTING SOLUTIONS - LUMARK (FORMERLY EATON), PRV-XL-C75-D-UNV-T5-BZ	120V 1P 2W	4	7033	0.9



REVISION BLOCK

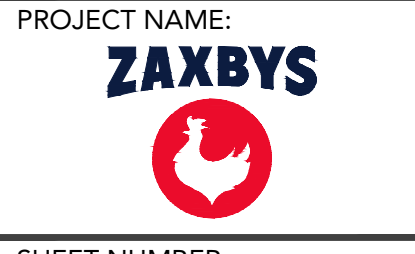
ISSUE	REVISION DATE & DESCRIPTION
1	07/07/2025 - INITIAL SUBMITTAL
2	08/07/2025 - REVISE DRIVE THRU
3	09/11/2025 - PROJECT REVIEW MEETING SUBMITTAL
4	12/07/2025 - DRC SUBMITTAL
5	07/14/2026 - PLANNING COMMISSION SUBMITTAL
6	
7	
8	



CARTER ENGINEERING
1010 COMMERCE DRIVE
BOGART, GA 30622
P: 770.725.1200
F: 770.725.1204
www.carterengineering.com

SITE DEVELOPMENT PLANS
FOR
ZAXBY'S RESTAURANT
2560 E MAIN STREET - PLAINFIELD, IN 46168

SHEET TITLE:
OUTDOOR LIGHTING PLAN



PROJECT NAME:
ZAXBYS
SHEET NUMBER:
C 10.0
PROJECT NUMBER:
25064ZAX
DATE:
01/14/2026

ENGINEER/DESIGNER NOT RESPONSIBLE FOR COST CHANGES DURING PRELIMINARY PHASE. BIDS & QUOTES SHALL BE BASED ON PLAN SETS LABELED "ISSUE FOR CONSTRUCTION".

Project	Catalog #	Type
Prepared by	Notes	Date



Lumark Preval LED

Area / Site Luminaire

Product Features



Product Certifications

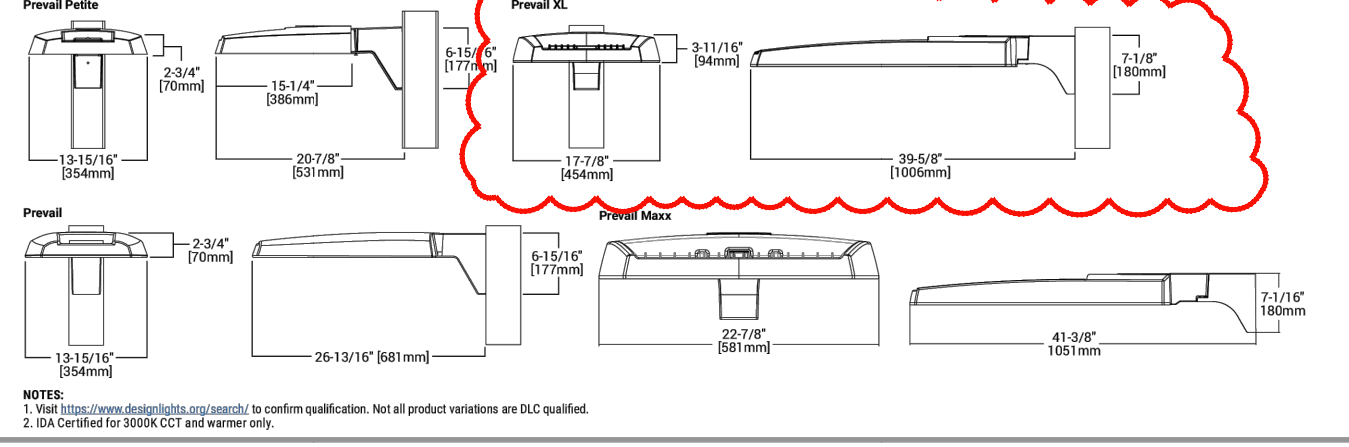


Connected Systems

- WaveLinx PRO Wireless
- WaveLinx LITE Wireless

- ### Quick Facts
- Lumen packages range from 4,800 - 84,000 lumens (35W - 588W)
 - Replaces 70W up to 1,000W HID equivalents
 - Efficacies up to 160 lumens per watt
 - Energy and maintenance savings up to 85% versus HID solutions
 - Standard universal quick mount arm with universal drill pattern

Dimensional Details

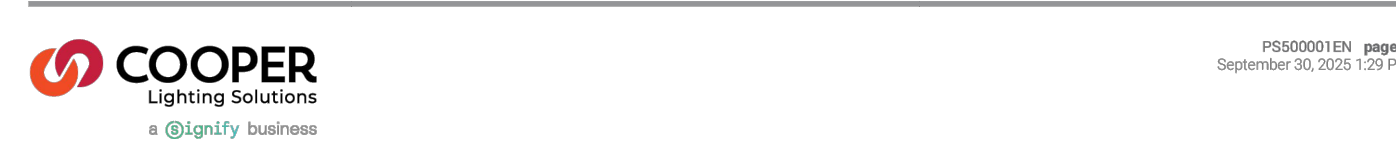


Product Family	Light Engine	Color Temperature	Driver	Voltage	Distribution	Mounting	Color
----------------	--------------	-------------------	--------	---------	--------------	----------	-------

PRV-Preval Petite	C10 (1 LED) 4,800 Nominal Lumens C15 (1 LED) 7,200 Nominal Lumens C25 (1 LED) 10,800 Nominal Lumens C25 (1 LED) 17,100 Nominal Lumens	740-700K, 4000K 727-700K, 2700K 720-700K, 5000K 750-700K, 5000K 400-650K, 4000K	0-Dimming 0-10V 0-10V 0-10V 0-10V	120-277V 120-277V 120-277V 120-277V	T2-Type II T2-Type II T2-Type II T2-Type II	BZ-Bronze AP-Brass MA-Matte Aluminum WM-White GM-Graphite WH-White	BZ-Bronze AP-Brass MA-Matte Aluminum WM-White GM-Graphite WH-White
--------------------------	--	---	---	--	--	---	---

PRV-Preval XL	C10 (4 LED) 24,000 Nominal Lumens C15 (4 LED) 36,000 Nominal Lumens C25 (4 LED) 54,000 Nominal Lumens C25 (4 LED) 81,000 Nominal Lumens	740-700K, 4000K 727-700K, 2700K 720-700K, 5000K 750-700K, 5000K	0-Dimming 0-10V 0-10V 0-10V	120-277V 120-277V 120-277V 120-277V	T2-Type II T2-Type II T2-Type II T2-Type II	BZ-Bronze AP-Brass MA-Matte Aluminum WM-White GM-Graphite WH-White	BZ-Bronze AP-Brass MA-Matte Aluminum WM-White GM-Graphite WH-White
----------------------	--	--	--------------------------------------	--	--	---	---

PRV-Preval	C10 (1 LED) 4,800 Nominal Lumens C15 (1 LED) 7,200 Nominal Lumens C25 (1 LED) 10,800 Nominal Lumens C25 (1 LED) 17,100 Nominal Lumens	740-700K, 4000K 727-700K, 2700K 720-700K, 5000K 750-700K, 5000K	0-Dimming 0-10V 0-10V 0-10V	120-277V 120-277V 120-277V 120-277V	T2-Type II T2-Type II T2-Type II T2-Type II	BZ-Bronze AP-Brass MA-Matte Aluminum WM-White GM-Graphite WH-White	BZ-Bronze AP-Brass MA-Matte Aluminum WM-White GM-Graphite WH-White
-------------------	--	--	--------------------------------------	--	--	---	---

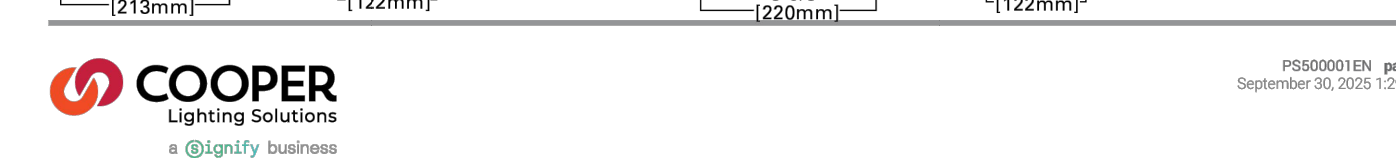


Product Family	Light Engine	Color Temperature	Driver	Voltage	Distribution	Mounting	Color
----------------	--------------	-------------------	--------	---------	--------------	----------	-------

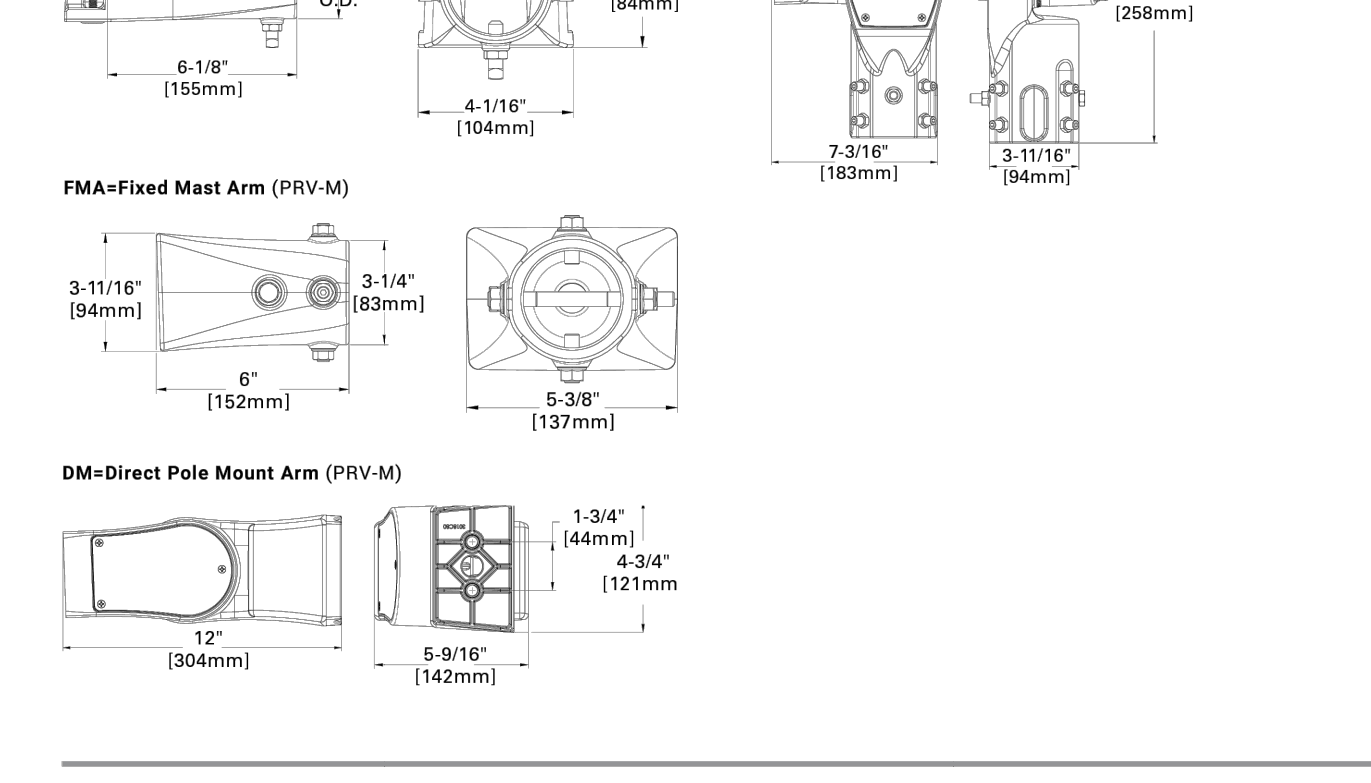
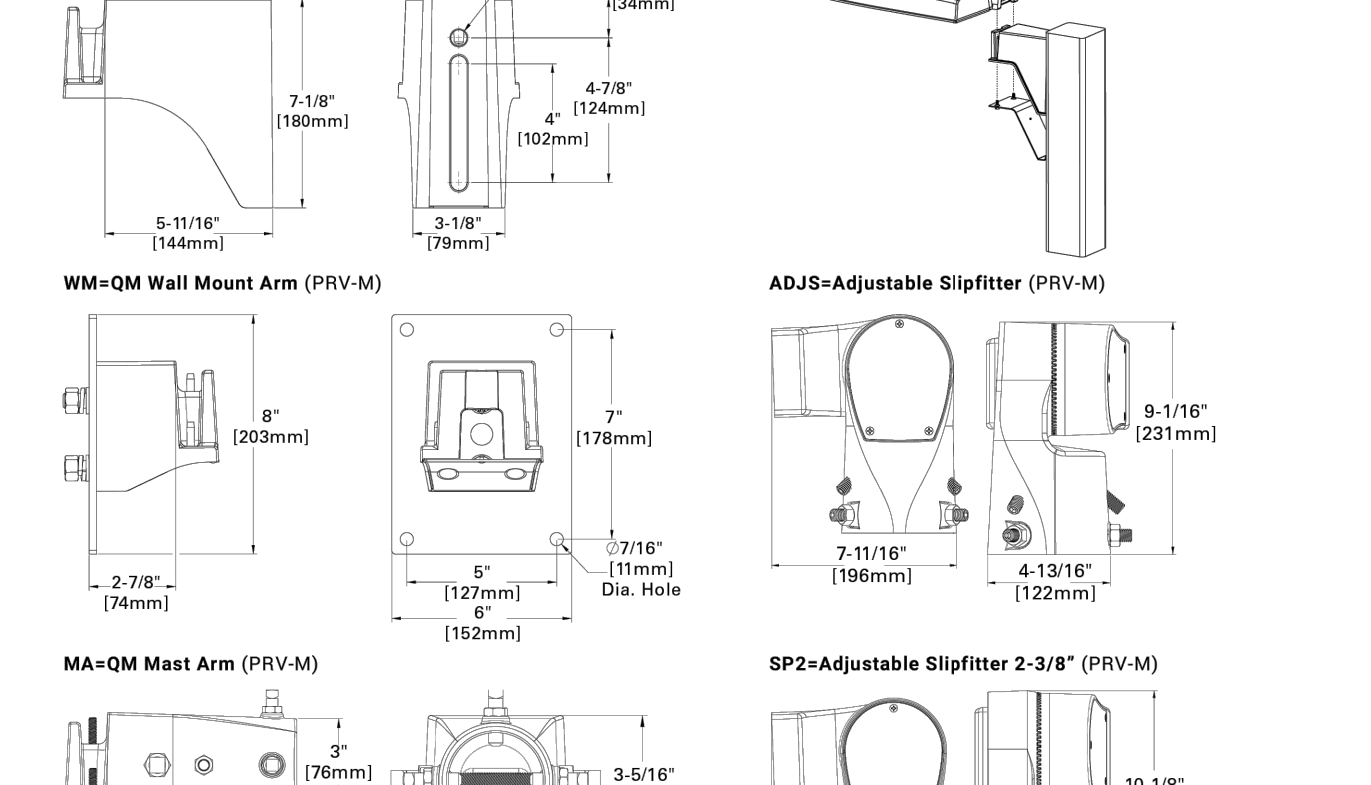
PRV-Preval Petite	C10 (1 LED) 4,800 Nominal Lumens C15 (1 LED) 7,200 Nominal Lumens C25 (1 LED) 10,800 Nominal Lumens C25 (1 LED) 17,100 Nominal Lumens	740-700K, 4000K 727-700K, 2700K 720-700K, 5000K 750-700K, 5000K	0-Dimming 0-10V 0-10V 0-10V	120-277V 120-277V 120-277V 120-277V	T2-Type II T2-Type II T2-Type II T2-Type II	BZ-Bronze AP-Brass MA-Matte Aluminum WM-White GM-Graphite WH-White	BZ-Bronze AP-Brass MA-Matte Aluminum WM-White GM-Graphite WH-White
--------------------------	--	--	--------------------------------------	--	--	---	---

PRV-Preval XL	C10 (4 LED) 24,000 Nominal Lumens C15 (4 LED) 36,000 Nominal Lumens C25 (4 LED) 54,000 Nominal Lumens C25 (4 LED) 81,000 Nominal Lumens	740-700K, 4000K 727-700K, 2700K 720-700K, 5000K 750-700K, 5000K	0-Dimming 0-10V 0-10V 0-10V	120-277V 120-277V 120-277V 120-277V	T2-Type II T2-Type II T2-Type II T2-Type II	BZ-Bronze AP-Brass MA-Matte Aluminum WM-White GM-Graphite WH-White	BZ-Bronze AP-Brass MA-Matte Aluminum WM-White GM-Graphite WH-White
----------------------	--	--	--------------------------------------	--	--	---	---

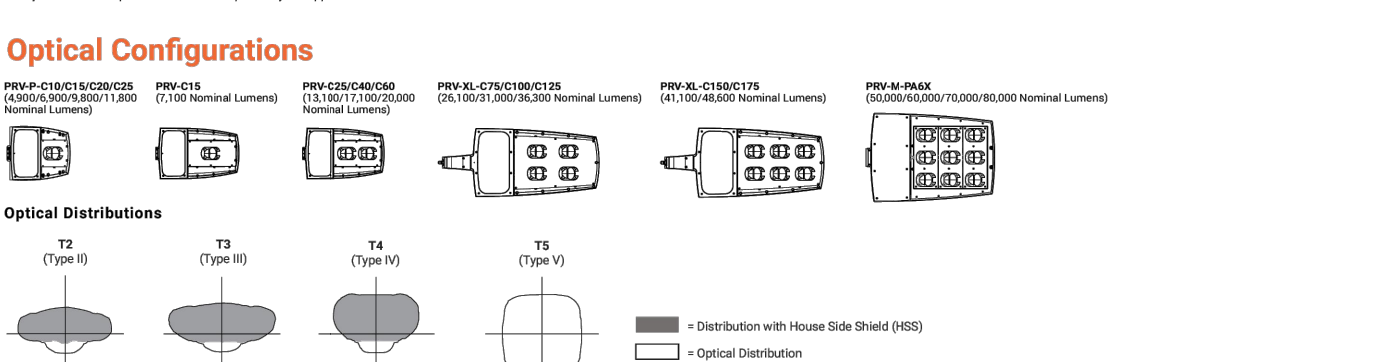
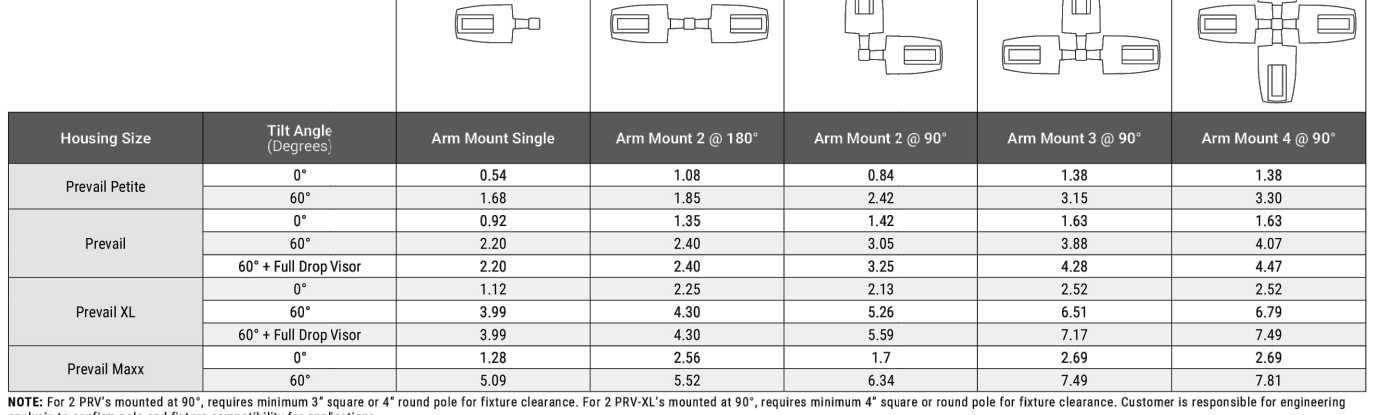
PRV-Preval	C10 (1 LED) 4,800 Nominal Lumens C15 (1 LED) 7,200 Nominal Lumens C25 (1 LED) 10,800 Nominal Lumens C25 (1 LED) 17,100 Nominal Lumens	740-700K, 4000K 727-700K, 2700K 720-700K, 5000K 750-700K, 5000K	0-Dimming 0-10V 0-10V 0-10V	120-277V 120-277V 120-277V 120-277V	T2-Type II T2-Type II T2-Type II T2-Type II	BZ-Bronze AP-Brass MA-Matte Aluminum WM-White GM-Graphite WH-White	BZ-Bronze AP-Brass MA-Matte Aluminum WM-White GM-Graphite WH-White
-------------------	--	--	--------------------------------------	--	--	---	---



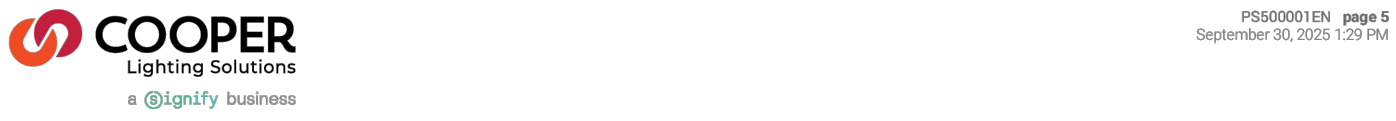
Product Family	Light Engine	Color Temperature	Driver	Voltage	Distribution	Mounting	Color
----------------	--------------	-------------------	--------	---------	--------------	----------	-------



Product Family	Light Engine	Color Temperature	Driver	Voltage	Distribution	Mounting	Color
----------------	--------------	-------------------	--------	---------	--------------	----------	-------



PRV-Preval Petite	C10 (1 LED) 4,800 Nominal Lumens C15 (1 LED) 7,200 Nominal Lumens C25 (1 LED) 10,800 Nominal Lumens C25 (1 LED) 17,100 Nominal Lumens	740-700K, 4000K 727-700K, 2700K 720-700K, 5000K 750-700K, 5000K	0-Dimming 0-10V 0-10V 0-10V	120-277V 120-277V 120-277V 120-277V	T2-Type II T2-Type II T2-Type II T2-Type II	BZ-Bronze AP-Brass MA-Matte Aluminum WM-White GM-Graphite WH-White	BZ-Bronze AP-Brass MA-Matte Aluminum WM-White GM-Graphite WH-White
--------------------------	--	--	--------------------------------------	--	--	---	---



Product Family	Light Engine	Color Temperature	Driver	Voltage	Distribution	Mounting	Color
----------------	--------------	-------------------	--------	---------	--------------	----------	-------

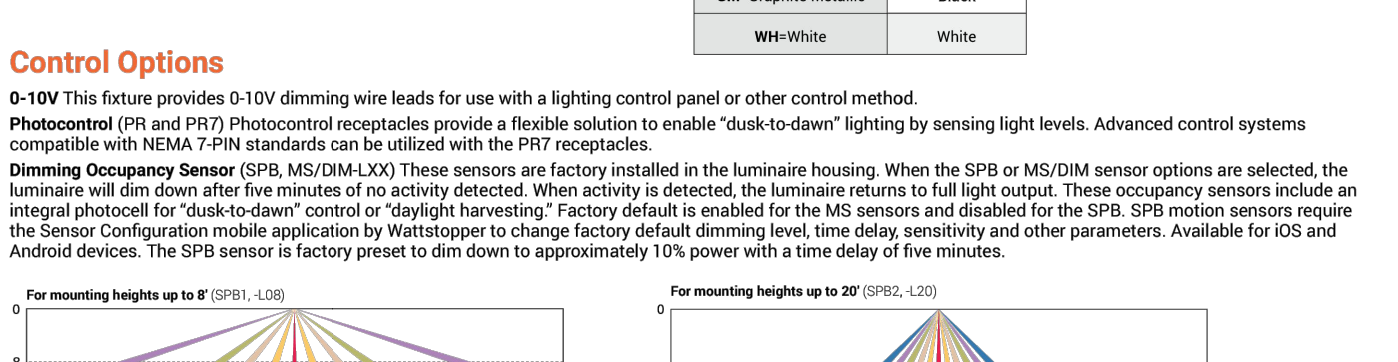
Power and Lumens	Preval Petite	Preval	Preval XL	Preval Maxx
Power (Watts)	35, 49, 73, 94	52, 96, 131, 193	176, 217, 264, 285	346, 346, 418, 487, 588
Input Current @ 120V AC	0.29, 0.41, 0.61, 0.79	0.43, 0.80, 1.09, 1.52	1.84, 2.21, 2.38, 2.92	2.89, 3.49, 4.06, 4.90
Input Current @ 277V AC	0.11, 0.16, 0.23, 0.29	0.17, 0.30, 0.41, 0.58	0.64, 0.78, 0.84, 1.00	1.20, 1.41, 1.60, 1.90
Input Current @ 480V AC	0.08, 0.12, 0.17, 0.22	0.12, 0.22, 0.30, 0.36	0.48, 0.58, 0.64, 0.77	0.82, 0.74, 0.73, 0.88, 1.00, 1.21

Typical Applications	Typical Applications
<ul style="list-style-type: none"> Parking lots Walkways Buildings Building Areas 	<ul style="list-style-type: none"> Parking lots Walkways Buildings Building Areas

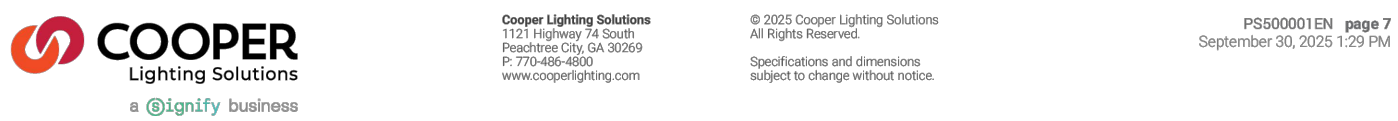


Product Family	Light Engine	Color Temperature	Driver	Voltage	Distribution	Mounting	Color
----------------	--------------	-------------------	--------	---------	--------------	----------	-------

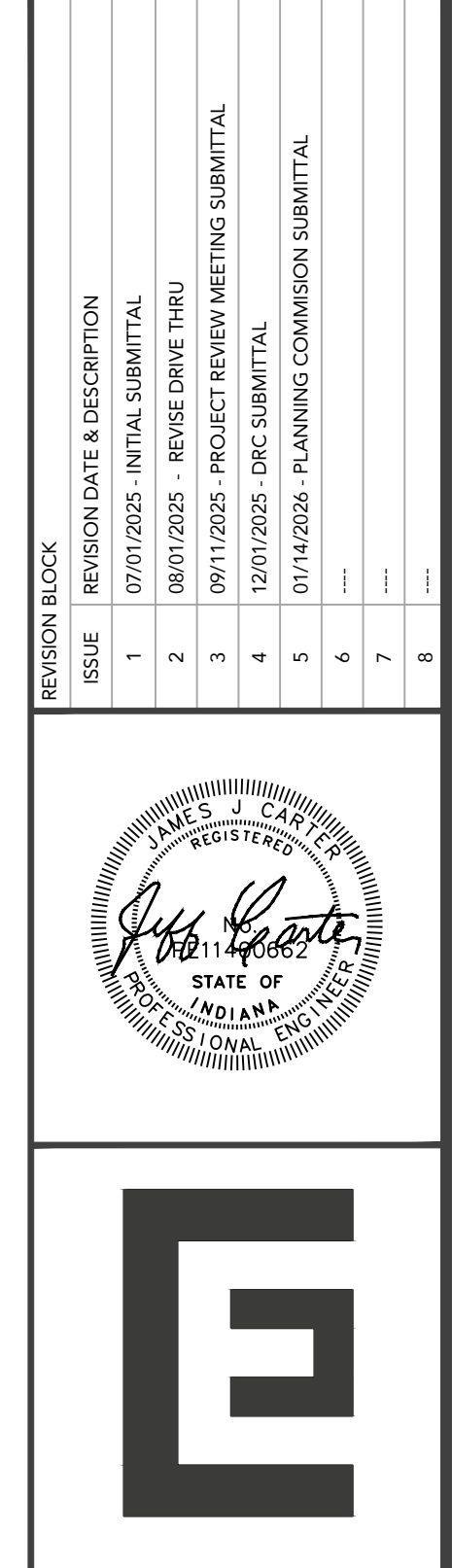
Power and Lumens	Preval Petite	Preval	Preval XL	Preval Maxx
Power (Watts)	35, 49, 73, 94	52, 96, 131, 193	176, 217, 264, 285	346, 346, 418, 487, 588
Input Current @ 120V AC	0.29, 0.41, 0.61, 0.79	0.43, 0.80, 1.09, 1.52	1.84, 2.21, 2.38, 2.92	2.89, 3.49, 4.06, 4.90
Input Current @ 277V AC	0.11, 0.16, 0.23, 0.29	0.17, 0.30, 0.41, 0.58	0.64, 0.78, 0.84, 1.00	1.20, 1.41, 1.60, 1.90
Input Current @ 480V AC	0.08, 0.12, 0.17, 0.22	0.12, 0.22, 0.30, 0.36	0.48, 0.58, 0.64, 0.77	0.82, 0.74, 0.73, 0.88, 1.00, 1.21



PRV-Preval Petite	C10 (1 LED) 4,800 Nominal Lumens C15 (1 LED) 7,200 Nominal Lumens C25 (1 LED) 10,800 Nominal Lumens C25 (1 LED) 17,100 Nominal Lumens	740-700K, 4000K 727-700K, 2700K 720-700K, 5000K 750-700K, 5000K	0-Dimming 0-10V 0-10V 0-10V	120-277V 120-277V 120-277V 120-277V	T2-Type II T2-Type II T2-Type II T2-Type II	BZ-Bronze AP-Brass MA-Matte Aluminum WM-White GM-Graphite WH-White	BZ-Bronze AP-Brass MA-Matte Aluminum WM-White GM-Graphite WH-White
--------------------------	--	--	--------------------------------------	--	--	---	---



REVISION BLOCK	REVISION DATE & DESCRIPTION	ISSUE
1	08/07/2025 - INITIAL SUBMITTAL	1
2	08/07/2025 - REVERSE DRIVE THRU	2
3	09/11/2025 - PROJECT REVIEW MEETING SUBMITTAL	3
4	12/07/2025 - DRC SUBMITTAL	4
5	07/14/2026 - PLANNING COMMISSION SUBMITTAL	5
6		6
7		7
8		8



CARTER ENGINEERING
1010 COMMERCIAL DRIVE
BOGART, GA 30622

P: 770.725.1200
F: 770.725.1204
www.carterengineering.com

SITE DEVELOPMENT PLANS FOR ZAXBY'S RESTAURANT 2560 E MAIN STREET - PLAINFIELD, IN 46168

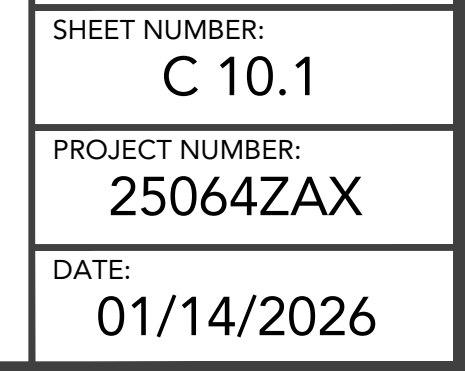
SHEET TITLE:
OUTDOOR LIGHTING
PLAN DETAILS

PROJECT NAME:
ZAXBYS

SHEET NUMBER:
C 10.1

PROJECT NUMBER:
25064ZAX

DATE:
01/14/2026



ENGINEER/DESIGNER NOT RESPONSIBLE FOR COST CHANGES DURING PRELIMINARY PHASE. BIDS & QUOTES SHALL BE BASED ON PLANS SETS. BIDS & QUOTES SHALL BE REVISED BASED ON PLANS LABELED "ISSUE FOR CONSTRUCTION".