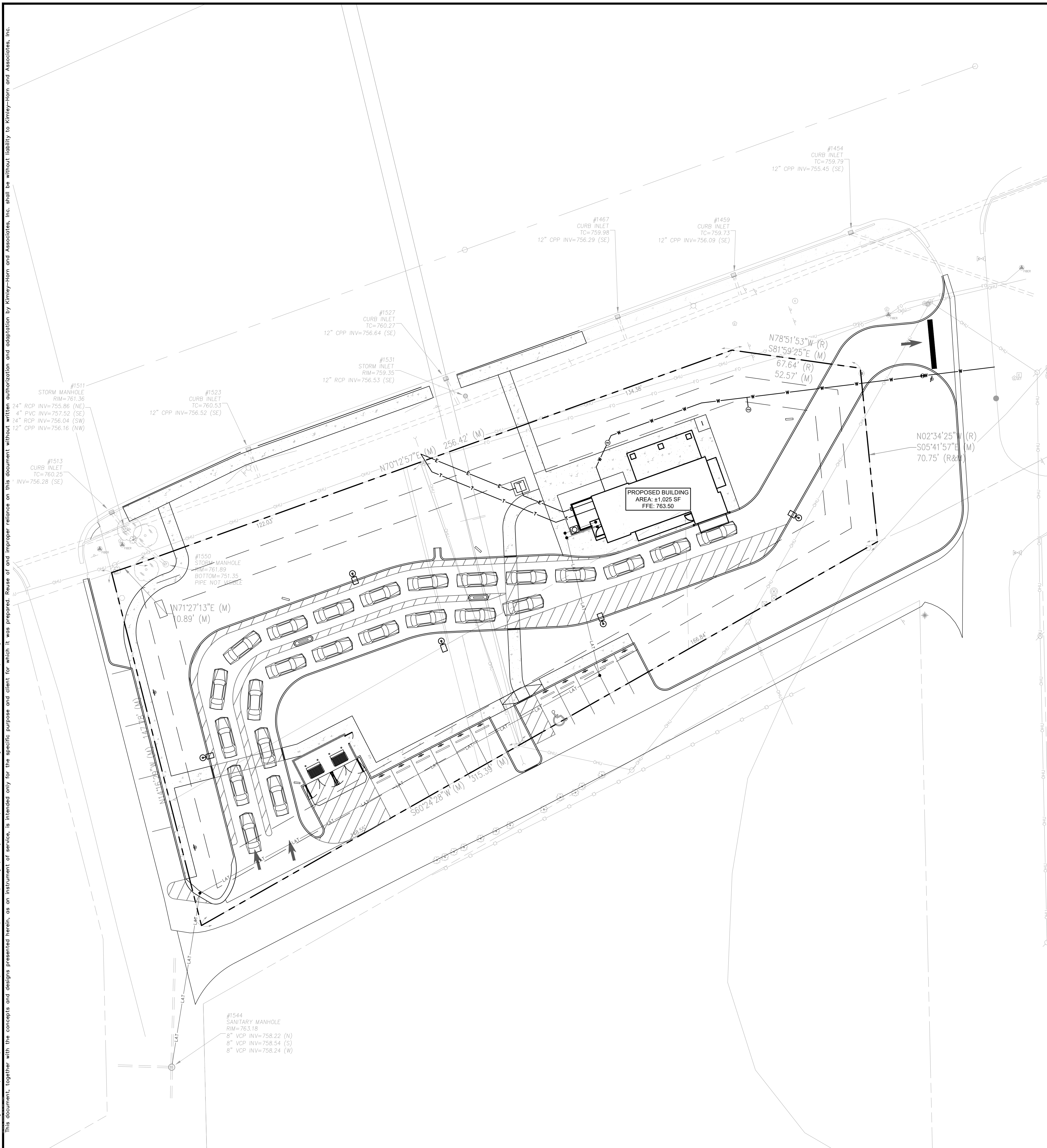


Drawing name: K:\IND_DEV\170557007_milkcrate development\attach_bros_planned.in V2 Design\CADD\planworks\CR6-UTILITY PLAN.dwg C6.0 Mar 03, 2026 4:26pm by: Josh Koone
 This document, together with the concepts and designs presented herein, is intended only for the specific purpose and client for which it was prepared. Reuse of and improper reliance on this document without written authorization and adaptation by Kimley-Horn and Associates, Inc. shall be without liability to Kimley-Horn and Associates, Inc.

Indiana Utilities Protection Service
Call 811
 before you dig



UTILITY NOTES

GENERAL UTILITY NOTES

- ALL WATER LINES SHALL BE PVC C900 DR-14 OR DUCTILE IRON CL 350.
- ALL SANITARY SEWER LINES SHALL BE PVC MEETING ASTM D-3034 SDR 26 EXCEPT FOR SANITARY SEWER THAT CROSSES ABOVE WATER MAIN, THIS PIPE SHALL BE AWWA C900 (UNLESS WATER MAIN CASING IS UTILIZED). PROVIDE 36" MINIMUM COVER (PER IDEM).
- CONTRACTOR SHALL COORDINATE ANY DISRUPTIONS TO EXISTING UTILITY SERVICES WITH ADJACENT PROPERTY OWNERS.
- ALL ELECTRIC AND TELEPHONE EXTENSIONS INCLUDING SERVICE LINES SHALL BE CONSTRUCTED TO THE APPROPRIATE UTILITY COMPANY SPECIFICATIONS. ALL UTILITY DISCONNECTIONS SHALL BE COORDINATED WITH THE DESIGNATED UTILITY COMPANIES.
- CONSTRUCTION SHALL NOT START ON ANY PUBLIC UTILITY SYSTEM UNTIL WRITTEN APPROVAL HAS BEEN RECEIVED BY THE ENGINEER FROM THE APPROPRIATE GOVERNING AUTHORITY AND CONTRACTOR HAS BEEN NOTIFIED BY THE ENGINEER.
- CONTRACTOR TO CALL INDIANA 811 (811 OR 800-382-5544) TO COORDINATE FIELD LOCATIONS OF EXISTING UNDERGROUND UTILITIES BEFORE ORDERING MATERIALS OR COMMENCING CONSTRUCTION. NOTIFY ENGINEER OF ANY DISCREPANCIES IMMEDIATELY.
- PRIOR TO THE CONSTRUCTION OF OR CONNECTION TO ANY STORM DRAIN, SANITARY SEWER, WATER MAIN OR ANY OTHER UTILITIES, THE CONTRACTOR SHALL EXCAVATE, VERIFY AND CALCULATE ALL POINTS OF CONNECTION AND ALL UTILITY CROSSINGS AND INFORM THE ENGINEER AND THE OWNER/ DEVELOPER OF ANY CONFLICT OR REQUIRED DEVIATIONS FROM THE PLAN. NOTIFICATION SHALL BE MADE A MINIMUM OF 72 HOURS PRIOR TO CONSTRUCTION. THE ENGINEER AND ITS CLIENTS SHALL BE HELD HARMLESS IN THE EVENT THAT THE CONTRACTOR FAILS TO MAKE SUCH NOTIFICATION. THE MUNICIPALITY SHALL BE NOTIFIED OF ANY AND ALL CHANGES TO THE DESIGN PLANS.
- CONTRACTOR SHALL COMPLY COMPLETELY WITH THE LATEST STANDARDS OF OSHA DIRECTIVES OR ANY OTHER AGENCY HAVING JURISDICTION FOR EXCAVATION AND TRENCHING PROCEDURES. THE CONTRACTOR SHALL USE SUPPORT SYSTEMS, SLOPING, BENCHING AND OTHER MEANS OF PROTECTION. THIS IS TO INCLUDE, BUT NOT LIMITED TO ACCESS AND EGRESS FROM ALL EXCAVATION AND TRENCHING. CONTRACTOR IS RESPONSIBLE FOR COMPLYING WITH PERFORMANCE CRITERIA AS REQUIRED BY OSHA.
- CONTRACTOR TO AVOID DISRUPTION OF ANY ADJACENT TENANT'S TRAFFIC OPERATIONS DURING INSTALLATION OF UTILITIES.
- ALL DIMENSIONS ARE TO CENTERLINE OF PIPE OR CENTER OF MANHOLE UNLESS NOTED OTHERWISE.
- SEE ARCHITECTURAL AND MEP PLANS FOR EXACT UTILITY CONNECTION LOCATIONS AT BUILDING.
- LIGHT POLES SHOWN FOR COORDINATION PURPOSES ONLY AND DO NOT REPRESENT ACTUAL SIZE. SEE SITE LIGHTING PLANS BY OTHERS FOR MORE INFORMATION.
- SEE DETAILS FOR LOCATING STORM STRUCTURES WITHIN THE CURB LINE.
- STORMWATER FACILITIES MUST BE FUNCTIONAL BEFORE BUILDING CONSTRUCTION BEGINS.

EXISTING LEGEND

○ BOLLARD	○ MISC LID	○ YARD LIGHT
⊕ CONTROL BENCHMARK	⊕ MONITOR WELL	⊕ SANITARY CLEANOUT
⊕ ROW MONUMENT	⊕ GAS MARKER	⊕ SANITARY MANHOLE
⊕ FLAG POLE	⊕ GAS METER	⊕ VENT PIPE
⊕ MAIL BOX	⊕ GAS VALVE	⊕ STORM CURB INLET
○ UTILITY POLE	⊕ AC UNIT	⊕ STORM INLET
○ POST	⊕ AREA LIGHT	⊕ STORM ROOF DRAIN
⊕ SOIL BORING	⊕ ELECTRICAL BOX	⊕ STORM DRAIN MANHOLE
⊕ HANDICAP SYMBOL	⊕ ELECTRICAL HAND HOLE	⊕ STORM YARD DRAIN
⊕ SIGN	⊕ ELECTRICAL METER	⊕ FIRE DEPT CONNECTION
⊕ CABLE MANHOLE	⊕ ELECTRICAL MANHOLE	⊕ FIRE HYDRANT
⊕ CABLE PEDESTAL	⊕ ELECTRICAL MARKER	⊕ IRRIGATION VALVE
⊕ TELEPHONE PEDESTAL	⊕ ELECTRICAL TRANSFORMER	⊕ POST INDICATOR VALVE
⊕ TELEPHONE HAND HOLE	⊕ GUY POLE/WIRE	⊕ WELL
⊕ TELEPHONE MARKER	⊕ POWER POLE	⊕ WATER METER
⊕ TELEPHONE MANHOLE	⊕ TRAFFIC SIGNAL POLE	⊕ WATER VALVE
⊕ FIBER OPTIC MARKER	⊕ TRAFFIC MANHOLE	⊕ TREE / STUMP
⊕ SWALE	⊕ TS	⊕ TOE OF SLOPE
⊕ X FENCE LINE	⊕ TB	⊕ TOP OF BANK
⊕ SS SANITARY SEWER	⊕ FIB	⊕ UNDERGROUND FIBER OPTIC
⊕ SD STORM DRAIN	⊕ OHE	⊕ OVERHEAD ELECTRICAL
⊕ W WATER LINE	⊕ GAS	⊕ UNDERGROUND GAS
⊕ TREE LINE	⊕ TEL	⊕ UNDERGROUND TELEPHONE

UTILITY LEGEND

⊕	PROPOSED UNDERGROUND ELECTRIC LINE
⊕	PROPOSED GAS LINE (BY GAS COMPANY)
⊕	PROPOSED PHONE LINE
⊕	PROPOSED ROOF DRAIN LINE
⊕	PROPOSED UNDERDRAIN
⊕	PROPOSED SWALE
⊕	PROPOSED STORM SEWER LINE
STR XX	STRUCTURE ID
⊕	PROPOSED STORM STRUCTURES
⊕	PROPOSED SANITARY SEWER LINE
⊕	PROPOSED SANITARY LATERAL LINE
⊕	PROPOSED SANITARY MANHOLE
⊕	PROPOSED STORM/SANITARY CLEANOUT
⊕	PROPOSED WATER LINE
⊕	PROPOSED FIRE PROTECTION LINE
⊕	PROPOSED WATER VALVE BOX, PIV, METER FIRE HYDRANT, FIRE DEPT CONN. & VAULT
⊕	PROPOSED WATER BENDS & TEE
⊕	PROPOSED LIGHT POLE
⊕	PROPOSED TRANSFORMER PAD (BY OTHERS)

KEY NOTES

(D) DRAINAGE STORM SEWER
 D1. ROOF DRAIN SPLASH BLOCK
 (S) SANITARY SEWER
 S1. 6" SANITARY CLEANOUT
 S2. 6" SANITARY LATERAL LINE
 (W) WATER LINE
 W1. CONNECT TO EXISTING WATER (TAP OR TEE)
 W2. WATER TEE
 W3. GATE VALVE
 W4. 1" WATER METER
 W5. 1 1/4" WATER LINE
 W6. 1" IRRIGATION LINE
 W7. IRRIGATION METER
 (G) GAS LINE
 G1. GAS SERVICE LINE
 (E) ELECTRIC / TELEPHONE / CABLE
 E1. ELECTRIC SERVICE LINE
 E2. ELECTRIC TRANSFORMER
 E3. TELECOMMUNICATIONS LINE
 (M) MISCELLANEOUS
 M1. CONTRACTOR TO COORDINATE CONNECTION WITH UTILITY PROVIDER.
 M2. CONTRACTOR TO FIELD VERIFY LOCATION, DEPTH AND SIZE OF EXISTING UTILITY TO ENSURE CONFLICTS DO NOT EXIST WITH PROPOSED UTILITIES.
 M3. POTENTIAL UTILITY CONFLICT. ALL (WATER, SANITARY, DRAINAGE STORM) CROSSINGS TO HAVE 18" MIN. VERTICAL CLEARANCE. ALL WATER SERVICE LINES TO REMAIN PERPENDICULAR AT CROSSING IN SUCH THAT IT FORMS AN ANGLE BETWEEN 45° AND 90°.

NOTE: CONTRACTOR TO VERIFY WATER, SANITARY, GAS, & ETC LOCATIONS, SIZES AND TYPES WITH MEP PLANS PRIOR TO ORDERING MATERIALS.

DUTCH BROS
 PLAINFIELD
 1815 E. MAIN ST
 PLAINFIELD, IN 46168

ORIGINAL ISSUE:
 02/12/2026
 KHA PROJECT NO.
 170557007
 SHEET NUMBER
C6.0

UTILITY PLAN

MILKCRATE DEVELOPMENT LLC
 www.milkcratedev.com

CHAD STEVEN REGISTERED PROFESSIONAL ENGINEER
 NOT APPROVED FOR CONSTRUCTION

AS NOTED
 DESIGNED BY: JJK
 DRAWN BY: JJK
 CHECKED BY: CSM

Kimley-Horn
 6020 KIMLEY-HORN AND ASSOCIATES, INC.
 500 EAST 96TH STREET, SUITE 300,
 INDIANAPOLIS, IN 46240
 WWW.KIMLEY-HORN.COM

REVISIONS
 NO. DATE BY

DRC SUBMITTAL
 3/3/26 JJK