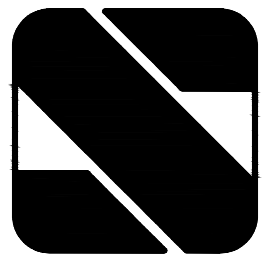


GENERAL NOTES:

1. REFERENCE SHEET M000 FOR LEGENDS, ABBREVIATIONS AND NOTES.
2. REFERENCE SHEET M001 FOR SPECIFICATIONS.
3. REFERENCE SHEET M002 FOR DETAILS AND SCHEDULES.

KEY NOTES: (#)

1. KEY NOTES



SEBREE ARCHITECTS

www.SEBREEarchitects.com
sebree@SEBREEarchitects.com

97 Dover Street
Suite 400
Avon, IN 46123
Phone: 317-272-7800
Fax: 317-272-7808

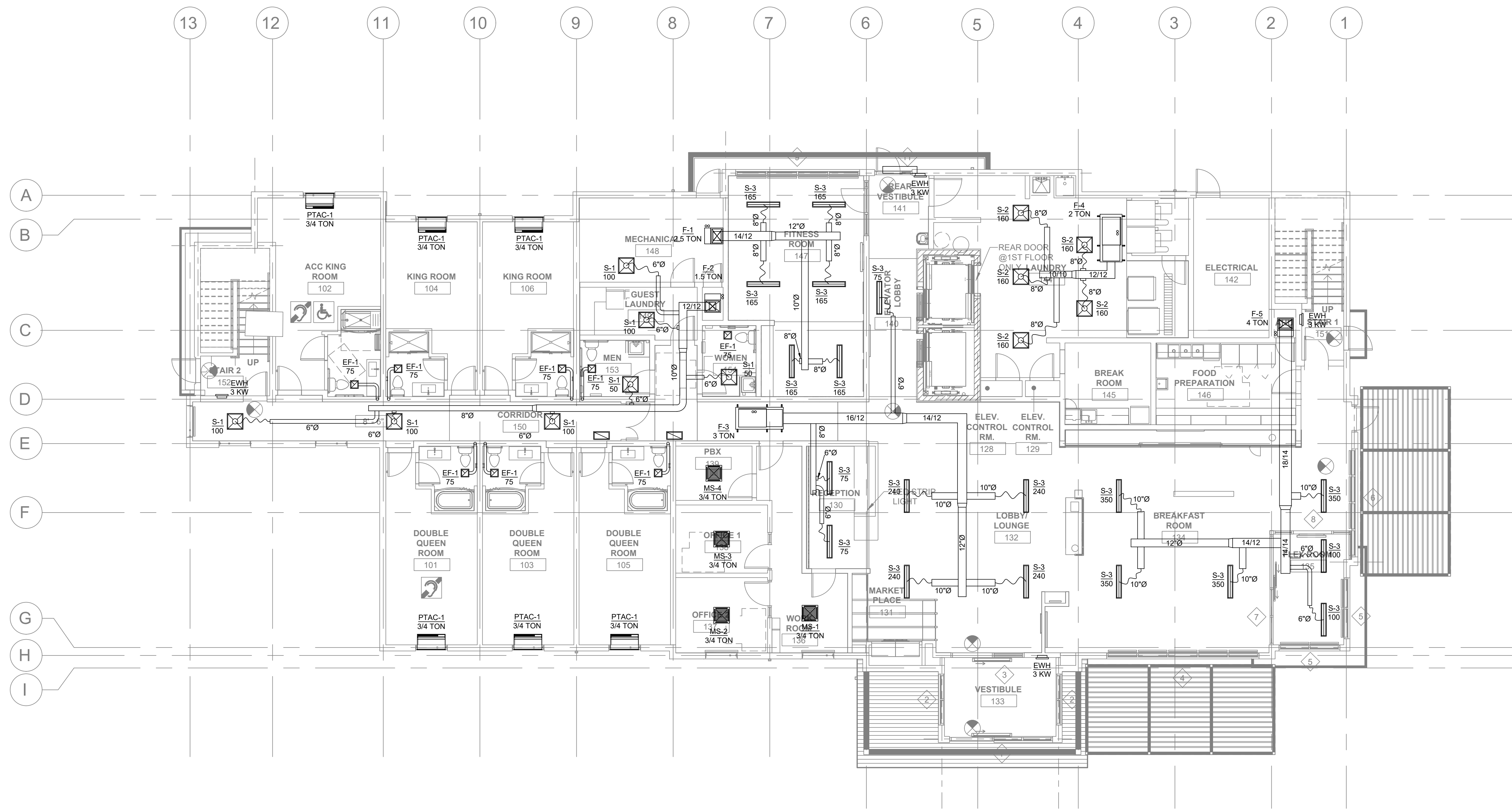
GA CONSULTING ENGINEERS
MECHANICAL, ELECTRICAL & PLUMBING

GA Engineering, P.C.
Email - AIG@GAengineering.com
North Office - 874 Cheltenham Way
Avon, IN 46123
South Office - 262 Tradewinds
Santa Rosa Beach FL 32459

CONSULTANT

SLEEP INN
IN PLAINFIELD
1331 SECTION STREET
PLAINFIELD, INDIANA

CERTIFIED BY



1 FIRST FLOOR HVAC PLAN
SCALE: 1/8" = 1'-0"

NO.	DATE	BY	DESCRIPTION

DATE XXXX	DRAWN BY
PROJECT NO. 250118	CHECKED BY

FIRST FLOOR HVAC PLAN

SHEET NO.
M100

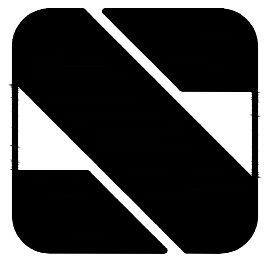
THESE PLANS AND SPECIFICATIONS ARE PROTECTED UNDER FEDERAL COPYRIGHT LAWS.
© SEBREE ARCHITECTS, INC. ALL RIGHTS RESERVED.

GENERAL NOTES:

1. REFERENCE SHEET M000 FOR LEGENDS, ABBREVIATIONS AND NOTES.
2. REFERENCE SHEET M001 FOR SPECIFICATIONS.
3. REFERENCE SHEET M002 FOR DETAILS AND SCHEDULES.

KEY NOTES: (#)

1. KEY NOTES



SEBREE
ARCHITECTS

www.SEBREEarchitects.com
sebree@SEBREEarchitects.com

97 Dover Street
Suite 400
Avon, IN 46123
Phone: 317-272-7800
Fax: 317-272-7808

GA CONSULTING
ENGINEERS
MECHANICAL, ELECTRICAL
& PLUMBING

GA Engineering, P.C.
Email: AIG@GAengineering.com
North Office - 874 Cheltenham Way
Avon, IN, 46123
South Office - 262 Tradewinds
Santa Rosa Beach FL, 32459

CONSULTANT

SLEEP INN
IN PLAINFIELD
1331 SECTION STREET
PLAINFIELD, INDIANA

CERTIFIED BY

NO.	DATE	BY	DESCRIPTION

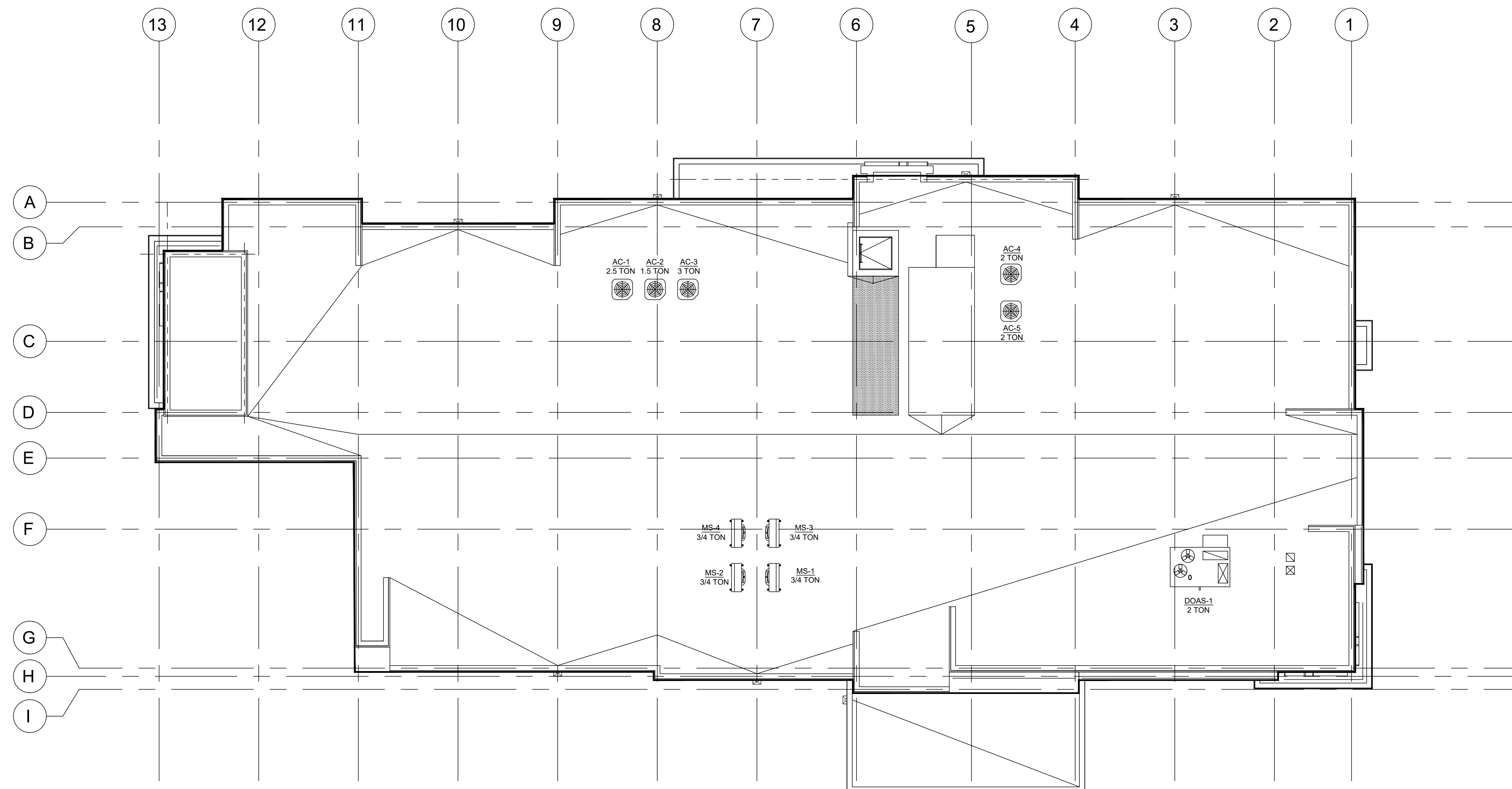
THESE PLANS AND SPECIFICATIONS ARE PROTECTED UNDER FEDERAL COPYRIGHT LAWS.
© SEBREE ARCHITECTS, INC. ALL RIGHTS RESERVED.

DATE XXXX	DRAWN BY
PROJECT NO. 250118	CHECKED BY

ROOF HVAC PLAN

SHEET NO.

M500



1 ROOF HVAC PLAN
SCALE: 1/8" = 1'-0"