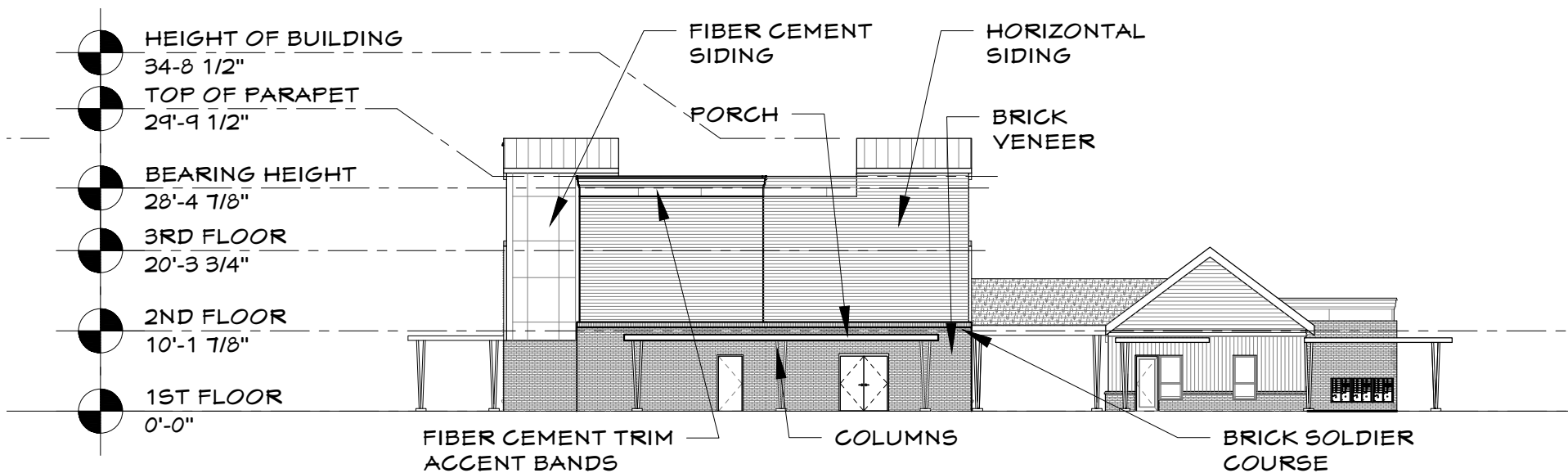


B NORTH ELEVATION

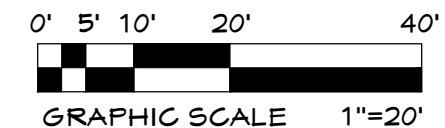


A SOUTH ELEVATION

EXTERIOR BUILDING MATERIALS:

PRIMARY SIDING MATERIALS:
 QTY: +/-80% OF EXTERIOR FACADES
 MATLS: 37.2% MASONRY
 23.9% FIBER CEMENT PANEL
 20.8% FIBER CEMENT SIDING

SECONDARY SIDING MATERIALS:
 QTY: +/-20% OF EXTERIOR FACADES
 MATLS: 14.1% VINYL WINDOWS,
 3.9% PVC CORNICE, PVC TRIM



ARCHITECT OF RECORD:
PCI DESIGN GROUP, INC.
 500 SOUTH FRONT ST, SUITE 975
 COLUMBUS, OH 43215

PROJECT TYPE:
 MULTI-FAMILY
 HOUSING

SHEET NAME:
 EXTERIOR ELEVATIONS
 - APARTMENT BUILDING

DATE:
 07-16-2021

PROJECT NAME:
STANLEY TERRACE
 VINE AND EAST STREETS
 PLAINFIELD, INDIANA

SUBMITTAL:
 PUD SUBMITTAL

SHEET:
A5.8