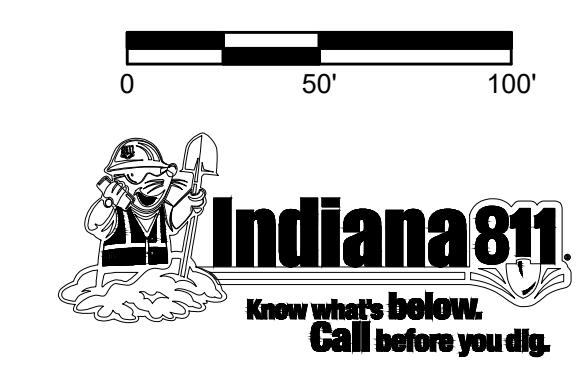
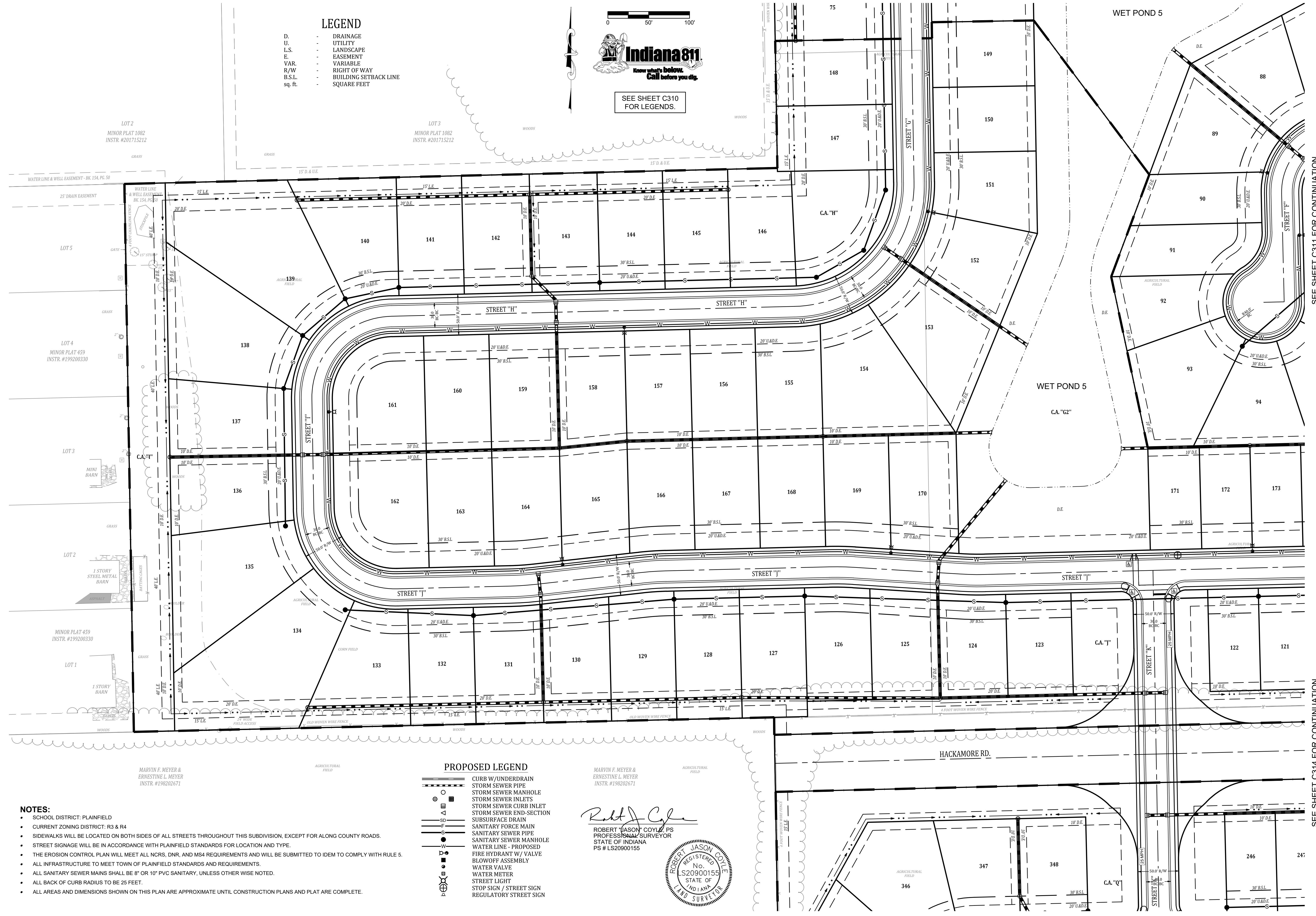


LEGEND

- D. - DRAINAGE
- U. - UTILITY
- L.S. - LANDSCAPE
- E. - EASEMENT
- VAR. - VARIABLE
- R/W - RIGHT OF WAY
- B.S.L. - BUILDING SETBACK LINE
- sq. ft. - SQUARE FEET



SEE SHEET C310 FOR LEGENDS.



- NOTES:**
- SCHOOL DISTRICT: PLAINFIELD
 - CURRENT ZONING DISTRICT: R3 & R4
 - SIDEWALKS WILL BE LOCATED ON BOTH SIDES OF ALL STREETS THROUGHOUT THIS SUBDIVISION, EXCEPT FOR ALONG COUNTY ROADS.
 - STREET SIGNAGE WILL BE IN ACCORDANCE WITH PLAINFIELD STANDARDS FOR LOCATION AND TYPE.
 - THE EROSION CONTROL PLAN WILL MEET ALL NCRS, DNR, AND MS4 REQUIREMENTS AND WILL BE SUBMITTED TO IDEM TO COMPLY WITH RULE 5.
 - ALL INFRASTRUCTURE TO MEET TOWN OF PLAINFIELD STANDARDS AND REQUIREMENTS.
 - ALL SANITARY SEWER MAINS SHALL BE 8" OR 10" PVC SANITARY, UNLESS OTHER WISE NOTED.
 - ALL BACK OF CURB RADIUS TO BE 25 FEET.
 - ALL AREAS AND DIMENSIONS SHOWN ON THIS PLAN ARE APPROXIMATE UNTIL CONSTRUCTION PLANS AND PLAT ARE COMPLETE.

PROPOSED LEGEND

- CURB W/UNDERDRAIN
- STORM SEWER PIPE
- STORM SEWER MANHOLE
- STORM SEWER INLETS
- STORM SEWER CURB INLET
- STORM SEWER END-SECTION
- SUBSURFACE DRAIN
- SANITARY FORCE MAIN
- SANITARY SEWER PIPE
- SANITARY SEWER MANHOLE
- WATER LINE - PROPOSED
- FIRE HYDRANT W/ VALVE
- BLOWOFF ASSEMBLY
- WATER VALVE
- WATER METER
- STREET LIGHT
- STOP SIGN / STREET SIGN
- REGULATORY STREET SIGN

MARVIN F. MEYER & ERNESTINE L. MEYER
INSTR. #198202671

ROBERT JASON COYLE, P.S.
PROFESSIONAL SURVEYOR
STATE OF INDIANA
PS # LS20900155

SEE SHEET C311 FOR CONTINUATION

SEE SHEET C314 FOR CONTINUATION

SEE SHEET C316 FOR CONTINUATION

Date	Revisions	Sym.	By	Checked	Scale	Date
					1" = 50'	11/30/21

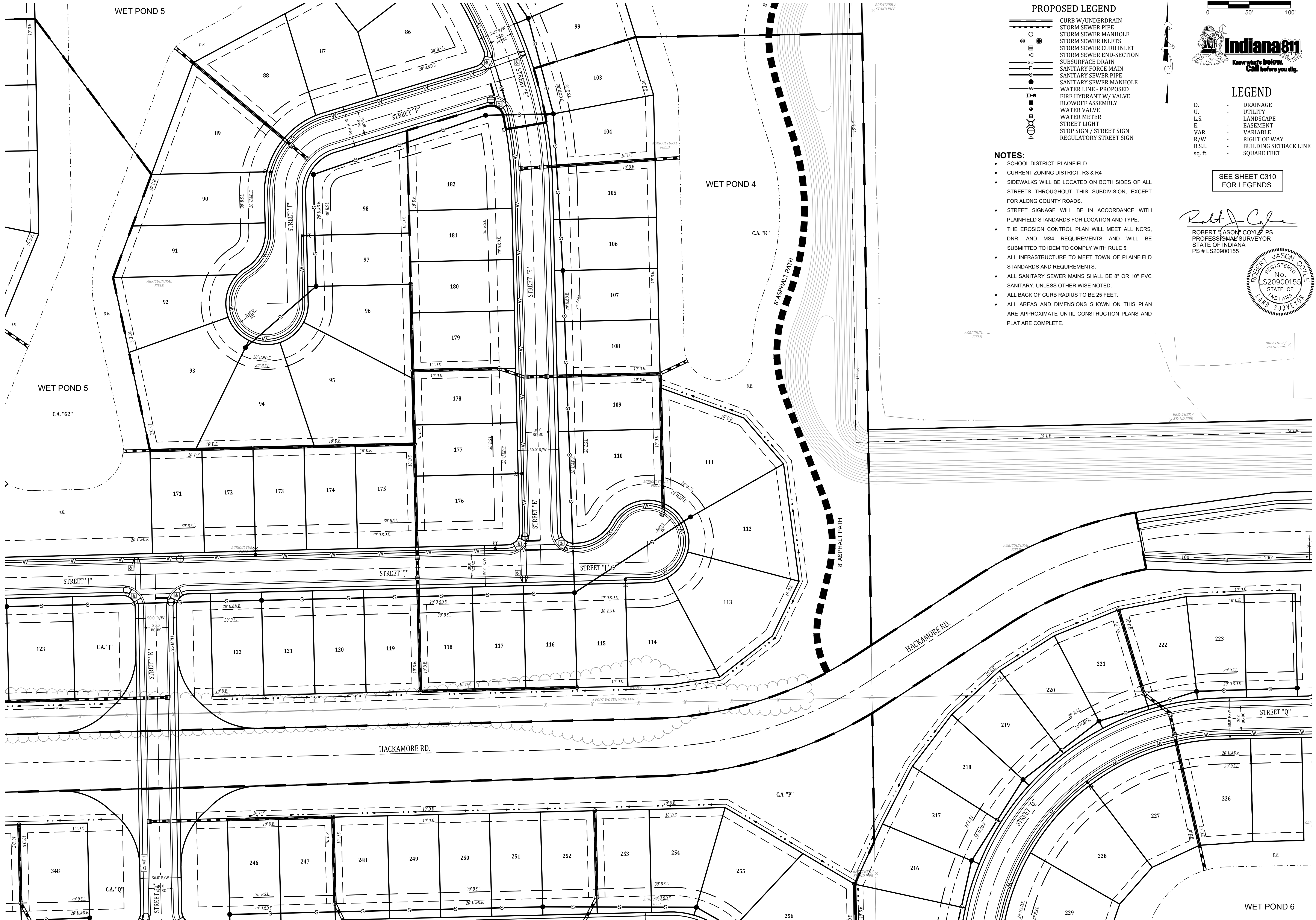
UTILITIES, SIDEWALK, & SIGNAGE PLAN
TRESSCOTT
HENDRICKS COUNTY, GUILFORD TOWNSHIP
PLAINFIELD, INDIANA

NOT FOR CONSTRUCTION

BANNING ENGINEERING
853 COLUMBIA ROAD SUITE #101
PLAINFIELD, IN 46168
BUS: (317) 707-3700 FAX: (317) 707-3800
E-Mail: Banning@BanningEngineering.com
WEB: www.BanningEngineering.com

Project No: 19274
Sheet No:

SEE SHEET C312 FOR CONTINUATION

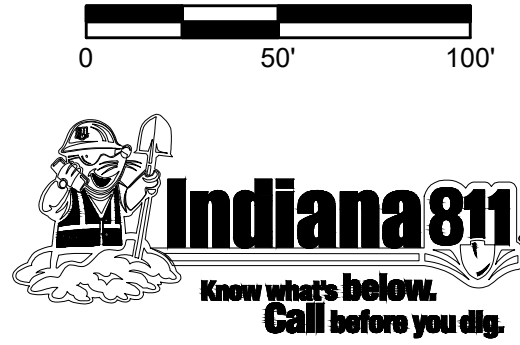


PROPOSED LEGEND

- CURB W/UNDERDRAIN
- STORM SEWER PIPE
- STORM SEWER MANHOLE
- STORM SEWER INLETS
- STORM SEWER CURB INLET
- STORM SEWER END-SECTION
- SUBSURFACE DRAIN
- SANITARY FORCE MAIN
- SANITARY SEWER PIPE
- SANITARY SEWER MANHOLE
- WATER LINE - PROPOSED
- FIRE HYDRANT W/ VALVE
- BLOWOFF ASSEMBLY
- WATER VALVE
- WATER METER
- STREET LIGHT
- STOP SIGN / STREET SIGN
- REGULATORY STREET SIGN

NOTES:

- SCHOOL DISTRICT: PLAINFIELD
- CURRENT ZONING DISTRICT: R3 & R4
- SIDEWALKS WILL BE LOCATED ON BOTH SIDES OF ALL STREETS THROUGHOUT THIS SUBDIVISION, EXCEPT FOR ALONG COUNTY ROADS.
- STREET SIGNAGE WILL BE IN ACCORDANCE WITH PLAINFIELD STANDARDS FOR LOCATION AND TYPE.
- THE EROSION CONTROL PLAN WILL MEET ALL NCRS, DNR, AND MS4 REQUIREMENTS AND WILL BE SUBMITTED TO IDEM TO COMPLY WITH RULE 5.
- ALL INFRASTRUCTURE TO MEET TOWN OF PLAINFIELD STANDARDS AND REQUIREMENTS.
- ALL SANITARY SEWER MAINS SHALL BE 8" OR 10" PVC SANITARY, UNLESS OTHER WISE NOTED.
- ALL BACK OF CURB RADIUS TO BE 25 FEET.
- ALL AREAS AND DIMENSIONS SHOWN ON THIS PLAN ARE APPROXIMATE UNTIL CONSTRUCTION PLANS AND PLAT ARE COMPLETE.



LEGEND

- D. - DRAINAGE
- U. - UTILITY
- L.S. - LANDSCAPE
- E. - EASEMENT
- VAR. - VARIABLE
- R/W - RIGHT OF WAY
- B.S.L. - BUILDING SETBACK LINE
- sq. ft. - SQUARE FEET

SEE SHEET C310 FOR LEGENDS.

Robert Jason Coyle

ROBERT JASON COYLE, P.S.
 PROFESSIONAL SURVEYOR
 STATE OF INDIANA
 PS # LS20900155



SEE SHEET C313 FOR CONTINUATION

SEE SHEET C316 FOR CONTINUATION

SEE SHEET C315 FOR CONTINUATION

SEE SHEET C315 FOR CONTINUATION

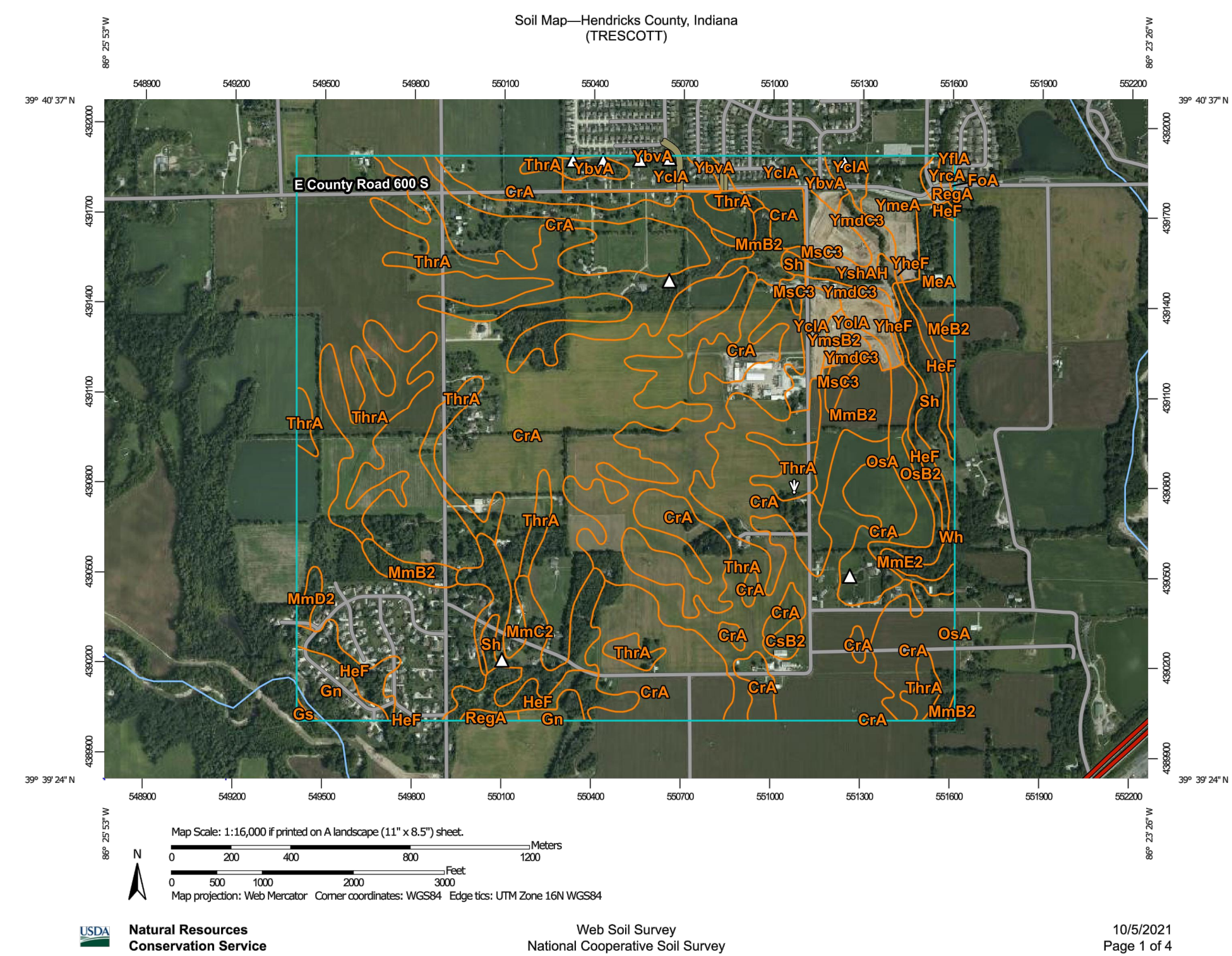
UTILITIES, SIDEWALK, & SIGNAGE PLAN
 TRESSCOTT
 HENDRICKS COUNTY, GUILFORD TOWNSHIP
 PLAINFIELD, INDIANA

NOT FOR CONSTRUCTION

BANNING ENGINEERING
 853 COLUMBIA ROAD, SUITE #101
 PLAINFIELD, IN 46168
 BUS: (317) 707-3700, FAX: (317) 707-3800
 E-MAIL: Banning@BanningEngineering.com
 WEB: www.BanningEngineering.com

Project No: 19274
 Sheet No:

Coyle R. 2019 19274 Engineering Coed Sheet Files Primary Plot 19274-PP-Utility.dwg Dec 22, 2021 12:34pm



Map Unit Legend

Map Unit Symbol	Map Unit Name	Acres in AOI	Percent of AOI
CrA	Crosby silt loam, fine-loamy subsoil, 0 to 2 percent slopes	524.7	51.0%
CsB2	Crosby-Miami silt loams, 2 to 4 percent slopes, eroded	2.8	0.3%
FoA	Fox loam, 0 to 2 percent slopes	0.2	0.0%
Gn	Genesee silt loam, 0 to 2 percent slopes, frequently flooded, very brief duration	14.2	1.4%
Ge	Genesee sandy loam, sandy substratum	0.6	0.1%
HeF	Hennepin loam, 25 to 50 percent slopes	30.4	3.0%
MeA	Martinsville loam, 0 to 2 percent slopes	14.8	1.4%
MeB2	Martinsville loam, 2 to 6 percent slopes, eroded	0.9	0.1%
MmB2	Miami silt loam, 2 to 6 percent slopes, eroded	27.6	2.7%
MmC2	Miami silt loam, 6 to 12 percent slopes, eroded	23.4	2.3%
MmD2	Miami silt loam, 12 to 18 percent slopes, eroded	2.4	0.2%
MmE2	Miami silt loam, 18 to 25 percent slopes, eroded	3.6	0.3%
McC3	Miami clay loam, 6 to 12 percent slopes, severely eroded	4.6	0.4%
OsA	Ockley silt loam, loamy substratum, 0 to 2 percent slopes	10.1	1.0%
OsB2	Ockley silt loam, loamy substratum, 2 to 6 percent slopes, eroded	7.9	0.8%
RegA	Rensselaer clay loam, till substratum, 0 to 2 percent slopes	1.6	0.2%
Sh	Shoals silt loam, 0 to 2 percent slopes, frequently flooded, brief duration	14.1	1.4%
ThrA	Treaty silty clay loam, 0 to 1 percent slopes	253.2	24.6%
Wh	Whitaker silt loam, 0 to 2 percent slopes	0.1	0.0%

Map Unit Symbol	Map Unit Name	Acres in AOI	Percent of AOI
YbvA	Brookston silty clay loam-Urban land complex, 0 to 2 percent slopes	8.3	0.8%
YcA	Crosby silt loam, fine-loamy subsoil-Urban land complex, 0 to 2 percent slopes	39.1	3.8%
YcB	Fox loam-Urban land complex, 0 to 2 percent slopes	0.0	0.0%
YheF	Hennepin loam-Urban land complex, 25 to 50 percent slopes	3.2	0.3%
YmdC3	Miami clay loam-Urban land complex, 6 to 12 percent slopes, severely eroded	11.9	1.2%
YmeA	Martinsville loam-Urban land complex, 0 to 2 percent slopes	14.6	1.4%
YmsB2	Miami silt loam-Urban land complex, 2 to 6 percent slopes, eroded	3.9	0.4%
YoaA	Ockley silt loam-Urban land complex, loamy substratum, 0 to 2 percent slopes	4.8	0.5%
YrcA	Rensselaer clay loam-Urban land complex, 0 to 2 percent slopes	1.5	0.1%
YshAH	Shoals silt loam-Urban land complex, 0 to 2 percent slopes, frequently flooded, brief duration	4.9	0.5%
Totals for Area of Interest		1,029.2	100.0%

National Flood Hazard Layer FIRMette



Legend

SEE FIS REPORT FOR DETAILED LEGEND AND INDEX MAP FOR FIRM PANEL LAYOUT

SPECIAL FLOOD HAZARD AREAS

- Without Base Flood Elevation (BFE)
- With BFE or Depth
- Regulatory Floodway

OTHER AREAS OF FLOOD HAZARD

- 0.2% Annual Chance Flood Hazard, Areas of 1% annual chance flood with average depth less than one foot or with drainage areas of less than one square mile
- Future Conditions 1% Annual Chance Flood Hazard
- Area with Reduced Flood Risk due to Dikes, See Notes
- Area with Flood Risk due to Levees
- Area of Minimal Flood Hazard
- Effective LOMRs

OTHER AREAS

- Area of Undetermined Flood Hazard

GENERAL STRUCTURES

- Channel, Culvert, or Storm Sewer
- Levee, Dike, or Floodwall

OTHER FEATURES

- Cross Sections with 1% Annual Chance
- Water Surface Elevation
- Coastal Transsect
- Base Flood Elevation Line (BFE)
- Limit of Study
- Jurisdiction Boundary
- Coastal Transsect Baseline
- Profile Baseline
- Hydrographic Feature

MAP PANELS

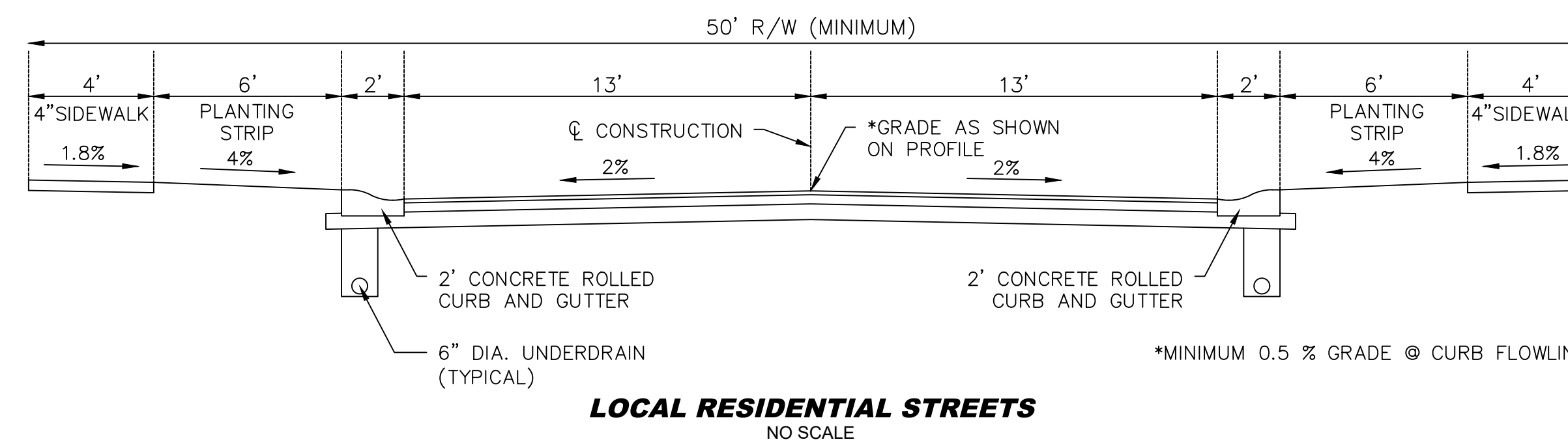
- Digital Data Available
- No Digital Data Available
- Unmapped

The pin displayed on the map is an approximate point selected by the user and does not represent an authoritative property location.

This map complies with FEMA's standards for the use of digital flood maps if it is not void as described below. The basemap shown complies with FEMA's basemap accuracy standards.

The flood hazard information is derived directly from the authoritative NFHL web services provided by FEMA. This map was exported on 10/4/2021 at 8:22 AM and does not reflect changes or amendments subsequent to this date and time. The NFHL and effective information may change or become superseded by new data over time.

This map image is void if the one or more of the following map elements do not appear: basemap imagery, flood zone labels, legend, scale bar, map creation date, community identifiers, FIRM panel number, and FIRM effective date. Map images for unmapped and unmodernized areas cannot be used for regulatory purposes.



Project No: 19274
Sheet No: C400

NOT FOR CONSTRUCTION

BANNING ENGINEERING
853 COLUMBIA ROAD SUITE #101
PLAINFIELD, IN 46168
BUS: (317) 707-3700 FAX: (317) 707-3800
E-MAIL: Banning@BanningEngineering.com
WEB: www.BanningEngineering.com

DETAILS, SOILS & FIRM MAP
TRECSCOTT
HENDRICKS COUNTY, GUILFORD TOWNSHIP
PLAINFIELD, INDIANA

Revisions: XXXXXX
Date: XXXXXX

Designed: RUC
Drawn: JUB
Checked: RUC
Scale: NTS
Date: 11/30/21