

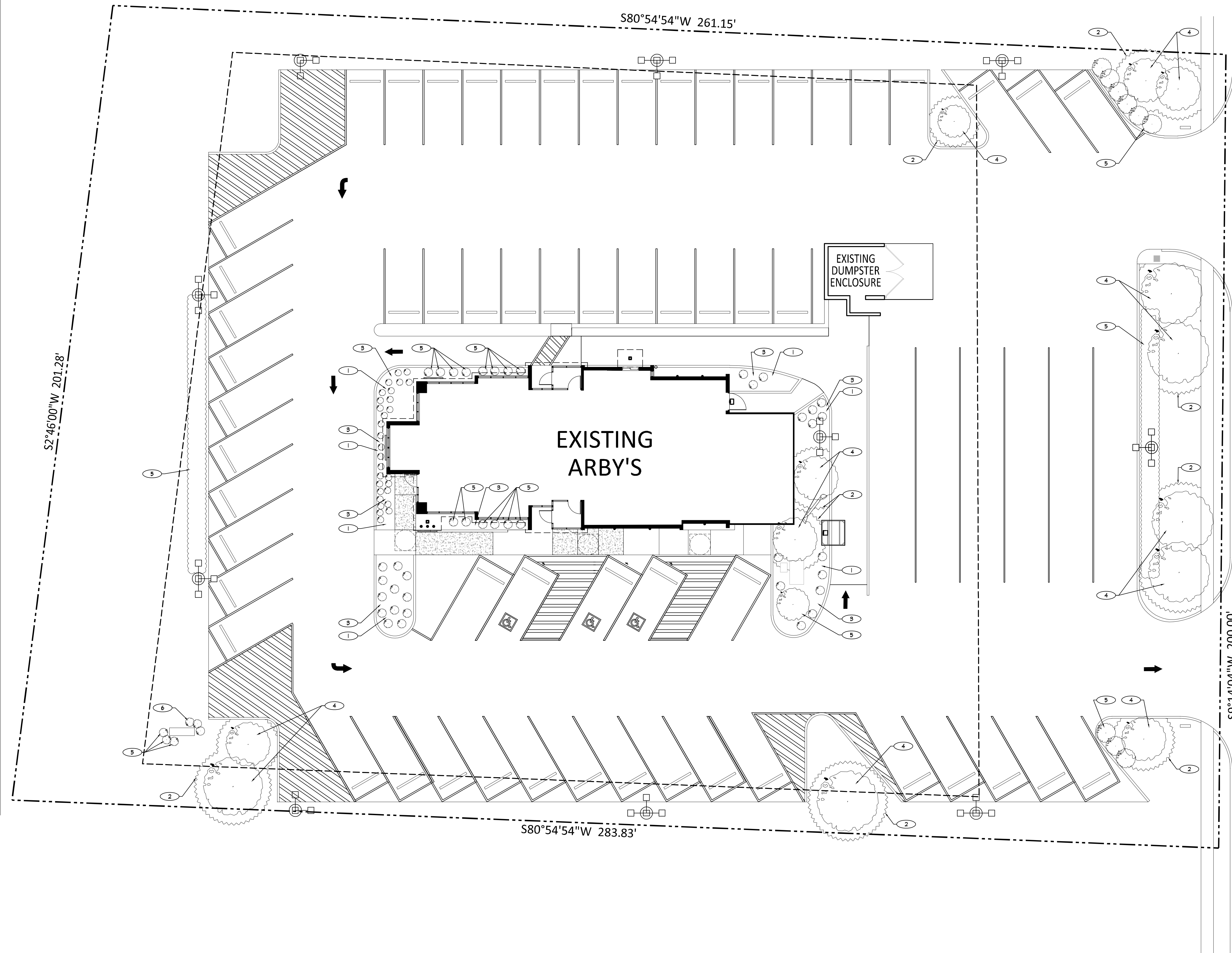
HWY. 267

S2°46'00"W 201.28'

S80°54'54"W 261.15'

S9°14'04"W 200.00'

S80°54'54"W 283.83'



**KEYED NOTES**

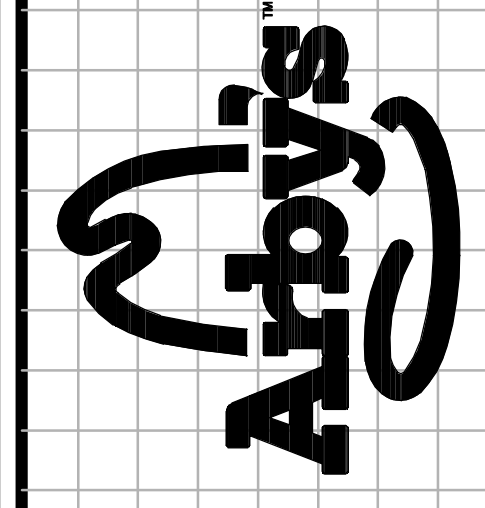
- 1 EXISTING LANDSCAPE AREA TO REMAIN. PROTECT SHRUBS WITH TENSION FRAMED ARBORIST MESH (LARGER PLANTS AND ESTABLISHED PERENNIAL GROUND COVER), OR WITH STAKED/SECURED LAUNDRY BASKETS (SMALLER PLANTS) DURING ALL PHASES OF CONSTRUCTION.
- 2 G.C. TO PROVIDE TEMPORARY HIGH-VISIBILITY STAKED SAFETY FENCING, 24-36" BEYOND DRIF EDGE OF TREE.
- 3 CHUNK "REDWOOD" RED HARDWOOD MULCH, APPLY AT END OF CONSTRUCTION PHASE.
- 4 EXISTING DECIDUOUS TREE TO REMAIN (X13)
- 5 EXISTING EVERGREEN SHRUBS TO REMAIN.
- 6 EXISTING EVERGREEN GROUNDCOVER TO REMAIN.

**GENERAL NOTES**

- A. ANY PLANTS, BUSHES, OR TREES DAMAGED BEYOND REASONABLE SURVIVAL/APPEARANCE WILL BE REPLACED BY THE G.C. AND AT THEIR EXPENSE WITH IDENTICAL PLANTS (SPECIES, SIZE) AT CLOSE OF WORK.
- B. ALL AREAS OF GRASS SHALL BE REPAIRED OF DAMAGE AND OVER-SEEDING WITH SEED OF SAME VARIETY AS EXISTING GRASS.

REGISTRATION SEAL

**ARCVISION**  
 INCORPORATED  
 ARCHITECTURE • ENGINEERING • STORE PLANNING  
 SAINT LOUIS / DALLAS / LAS VEGAS / ORLANDO  
 1950 CRRIG ROAD, SUITE 300 ST. LOUIS, MO 63146  
 PH: (314) 415-2400 FAX: (314) 415-2300  
 www.arcv.com



ARBY'S INSPIRE REMODEL  
 6007 GATEWAY DRIVE  
 PLAINFIELD, IN 46168  
 STORE # 6609

REV.	DATE	DESCRIPTION

PROJECT NO: 190440  
 DRAWN BY: LEA  
 CHECKED BY: JOW  
 ISSUE DATE: 09/23/19

SITE PLAN - LANDSCAPE

