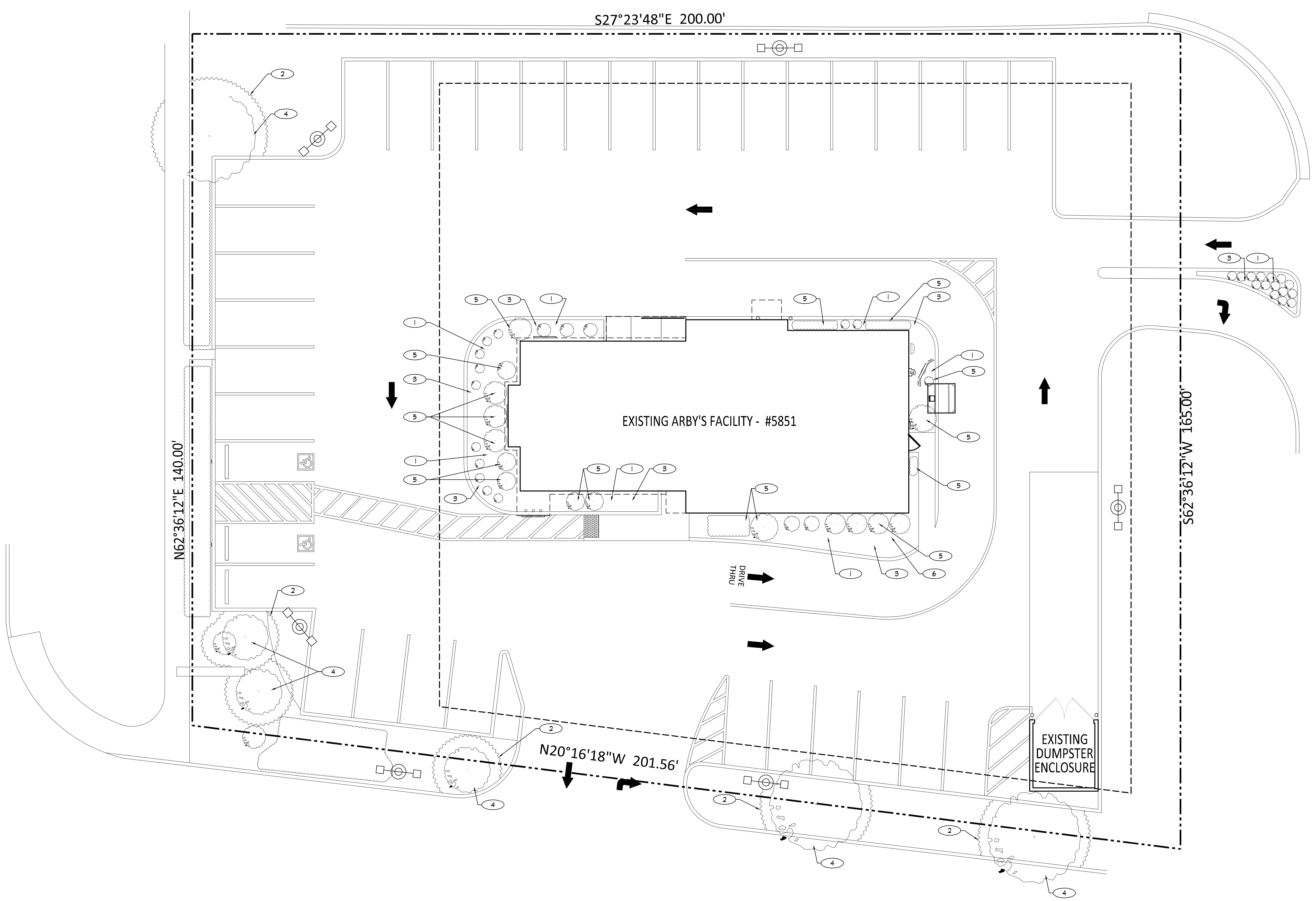


EAST MAIN ST. (HIGHWAY 40)

1 LANDSCAPE PLAN
SCALE: 1" = 10'-0"



KEYED NOTES

- 1 EXISTING LANDSCAPE AREA TO REMAIN. PROTECT SHRUBS WITH TENSION FRAMED ARBORIST MESH (LARGER PLANTS AND ESTABLISHED PERENNIAL GROUND COVER), OR WITH STAKED/SECURED LAUNDRY BASKETS (SMALLER PLANTS) DURING ALL PHASES OF CONSTRUCTION.
- 2 G.C. TO PROVIDE TEMPORARY HIGH-VISIBILITY STAKED SAFETY FENCING, 24-36" BEYOND DRIF EDGE OF TREE.
- 3 CHUNK "REDWOOD" RED HARDWOOD MULCH, APPLY AT END OF CONSTRUCTION PHASE.
- 4 EXISTING DECIDUOUS TREE TO REMAIN.
- 5 EXISTING EVERGREEN SHRUBS TO REMAIN.
- 6 EXISTING EVERGREEN GROUNDCOVER TO REMAIN.

GENERAL NOTES

- A. ANY PLANTS, BUSHES, OR TREES DAMAGED BEYOND REASONABLE SURVIVAL/APPEARANCE WILL BE REPLACED BY THE G.C. AND AT THEIR EXPENSE WITH IDENTICAL PLANTS (SPECIES, SIZE) AT CLOSE OF WORK.
- B. ALL AREAS OF GRASS SHALL BE REPAIRED OF DAMAGE AND OVER-SEEDED WITH SEED OF SAME VARIETY AS EXISTING GRASS.

REGISTRATION SEAL

ARCVISION
INCORPORATED
ARCHITECTURE • ENGINEERING • STORE PLANNING
SAINT LOUIS / DALLAS / LAS VEGAS / ORLANDO
1950 CRAIG ROAD, SUITE 300 ST. LOUIS, MO 63146
PH: (314) 415-2400 FAX: (314) 415-2300 www.arcv.com

Arby's

ARBY'S INSPIRE REMODEL
2601 EAST MAIN STREET
PLAINFIELD, IN 46168
STORE # 5851

REV.	DATE	DESCRIPTION

PROJECT NO: 180810
DRAWN BY: ME
CHECKED BY: JMW
ISSUE DATE: 08/06/19
SITE PLAN - LANDSCAPE

C102

PLANNING-DEVELOPMENT REVIEW