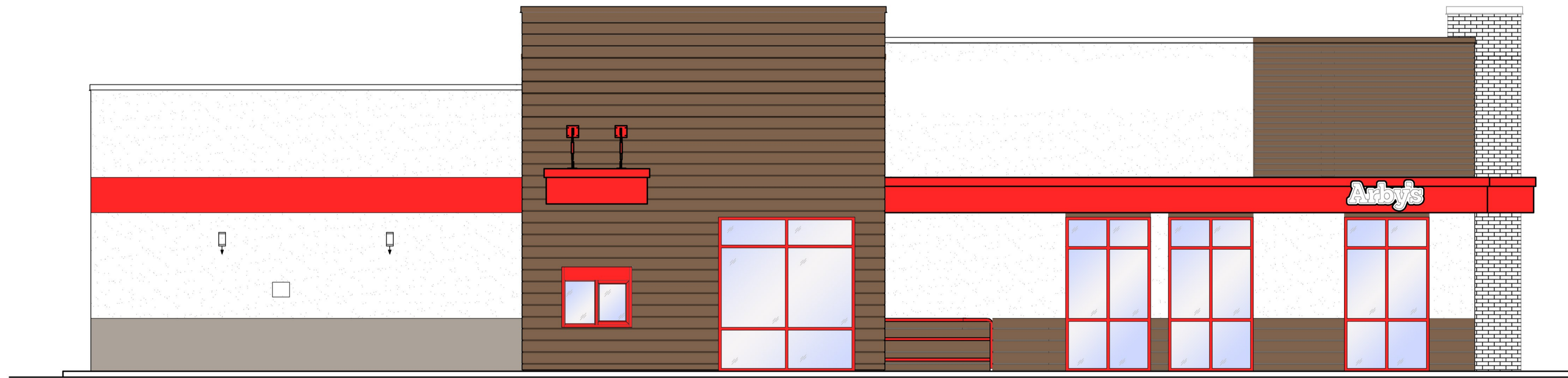




FRONT ELEVATION

REAR ELEVATION

- SHERWIN WILLIAMS
SW2005
PURE WHITE
- SHERWIN WILLIAMS
SW2808
ROOKWOOD BROWN
- SHERWIN WILLIAMS
SW6869
STOP
- SHERWIN WILLIAMS
SW7024
FUNCTIONAL GRAY

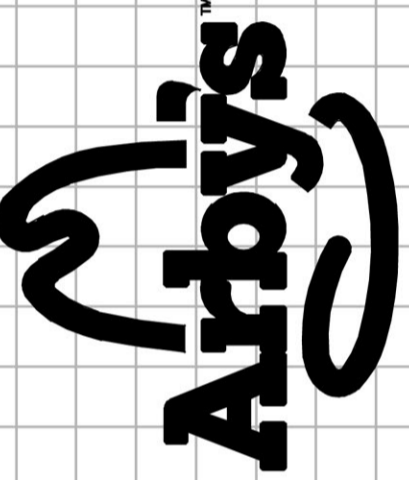


DRIVE-THRU SIDE ELEVATION



ENTRY SIDE ELEVATION

ARCVISION
 INCORPORATED
 ARCHITECTURE / ENGINEERING / STORE PLANNING
 SAINT LOUIS / DALLAS / LAS VEGAS / ORLANDO
 1950 CRAIG ROAD, SUITE 300 ST. LOUIS, MO 63146
 PH. (314) 415-2400 FAX (314) 415-2300 www.arcv.com



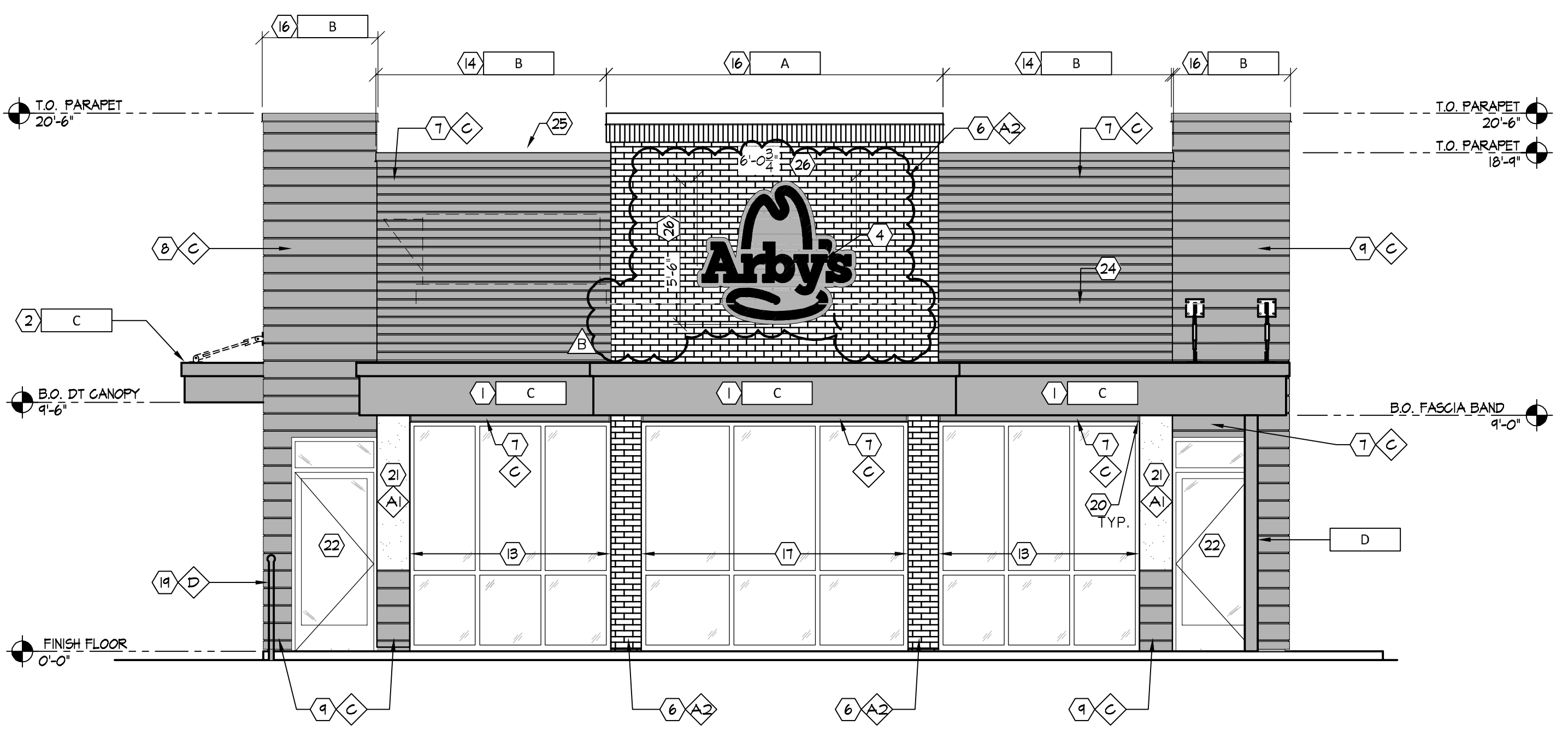
ARBY'S INSPIRE REMODEL
 2601 EAST MAIN STREET
 PLAINFIELD, IN 46168
 STORE # 5851

REV	DATE	DESCRIPTION
1	08/29/19	PLANNING + CLIENT COMMENTS
2	09/19/19	PLANNING COMMENTS

PROJECT NO: 180810
 DRAWN BY: BTD
 CHECKED BY: JOW
 ISSUE DATE: 08/06/19
 ELEVATIONS - RENDERED

TRANSPARENCY CALCULATIONS		
MATERIAL	SQUARE FEET	PERCENTAGE
OVERALL	4,442.4	100%
TRANSPARENCY/GLAZING	841.8	19.1%

FINISH SCHEDULE			
MARK	MANUFACTURER	DESCRIPTION	NOTES
FINISHES			
A	DRYVIT	EIFS WALL SYSTEM	COLOR: ARBY08/030 TEXTURE: STANDARD
B	DRYVIT	CUSTOM BRICK SPECIALTY FINISH WITH 28 PT. 3/8" NEW YORK STYLE TEMPLATE	BASE COAT: DRYVIT "NCB" BRICK LAYER: ARBY12/020, QUARZPUTZ GROUT LAYER: ARBY11/004
C	NOT USED	---	---
D	DRYVIT	EIFS WALL SYSTEM WITH V-GROOVE REVEAL 8" O.C.	COLOR: ARBY12/030 TEXTURE: SANDBLAST
E	SHERWIN WILLIAMS	SW #6669 STOP	SATIN FINISH
F	NOT USED	---	---
G	SHERWIN WILLIAMS	SW #1024 FUNCTIONAL GRAY	SATIN FINISH
H	SHERWIN WILLIAMS	SW #2808 ROCKWOOD DARK BROWN	SATIN FINISH
K	SHERWIN WILLIAMS	SW #1005 PURE WHITE	SATIN FINISH
METALS			
A	EXCEPTIONAL METALS/ DURO-LAST	TWO-PIECE SNAP-ON METAL COPING REGAL WHITE/ DURO-LAST #R10/TB1	FOR USE WITH DURO-LAST ROOFING SYSTEM DETAIL FAB10
B	EXCEPTIONAL METALS/ DURO-LAST	TWO-PIECE SNAP-ON METAL COPING DARK BRONZE/ DURO-LAST #R10/TB1	FOR USE WITH DURO-LAST ROOFING SYSTEM DETAIL FAB10
C	PRE-FABRICATED CANOPY/BAND	PRODUCT CODE: 9440-3014R PRODUCT NAME: FC SD RAL 3000 FINISH: RED	---
D	PRE-FABRICATED POST	PRODUCT CODE: 4840-8045R PRODUCT NAME: FC SD RAL 8017 COLOR: BROWN	---
E	BERRIDGE	STANDING SEAM METAL ROOF	ZINC GRAY

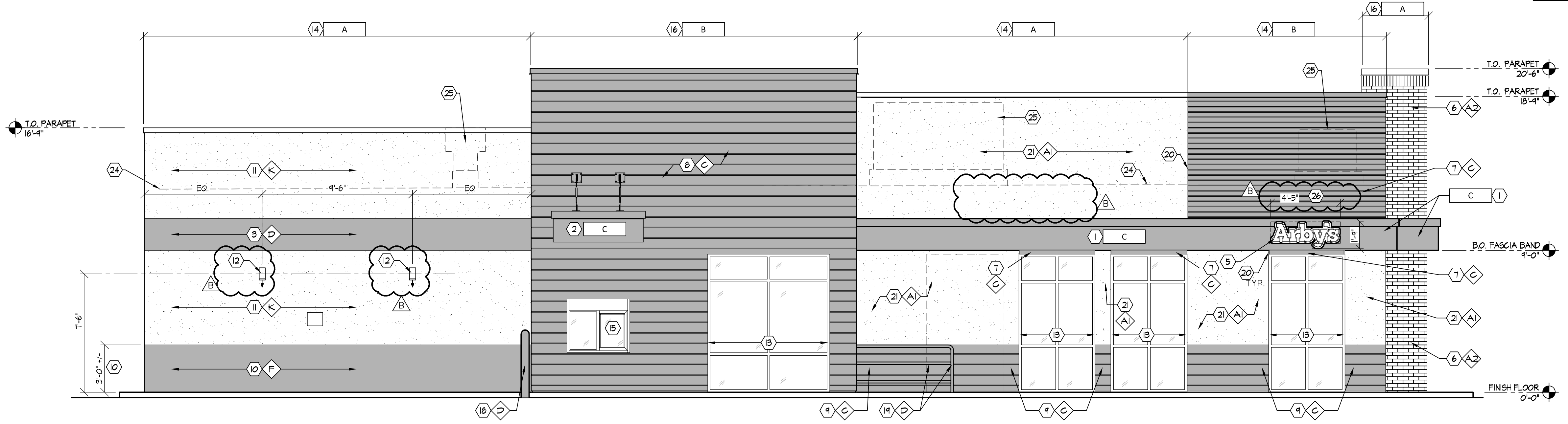


MATERIAL DISTRIBUTION - NEW (NORTH ELEV.)		
MATERIAL	SQUARE FEET	PERCENTAGE
OVERALL	753	100%
EIFS - BRICK PATTERN (WHITE)	110.8	14.7%
EIFS - SCORED (BROWN)	243	32.3%
EIFS - WHITE	14.6	1.9%
GLAZING-WINDOWS	231.1	30.7%
GLAZING-DOORS	32.0 (211 GLAZED)	4.2 (3.6)
PREFAB CANOPIES/ FASCIA BAND	75.3	10%
COPINGS (METAL)	14.6	1.9%
SIGNAGE (APPROXIMATE-SUPPLIED BY SEPARATE VENDOR UNDER SEPARATE PERMIT)	11.4	2.3%

- KEY NOTES** (X)
- INSTALL CANOPY/ACCENT BAND AT 9'-0" A.F.F.
 - CENTER DRIVE THRU CANOPY ON DRIVE THRU WINDOW
 - APPLY RED PAINTED ACCENT BAND AT 9'-0" A.F.F.
 - ARBY'S HAT SIGN CENTERED ON BRICK PATTERN EIFS BY SIGN VENDOR
 - NEW ARBY'S SIGN ON CANOPY, BY SIGN VENDOR
 - INSTALL BRICK PATTERNED EIFS
 - INSTALL BROWN EIFS WITH 4" O.C. V-GROOVES
 - INSTALL BROWN EIFS WITH 8" O.C. V-GROOVES AT THE DRIVE THRU BUMP-OUT. USE BROWN METAL COPING AT TOP OF WALL
 - INSTALL COPINGS WITH 8" O.C. V-GROOVES, USE BROWN METAL COPING AT TOP OF WALL
 - PATCH/REPAIR EXISTING EIFS/STUCCO AS REQUIRED. PAINT AS INDICATED.
 - INSTALL WALL MOUNTED LIGHT FIXTURE. SEE ELECTRICAL.
 - EXISTING STOREFRONT WINDOWS TO REMAIN. PAINT EXPOSED FLASHING TO MATCH ADJACENT WALL BELOW
 - NEW METAL PARAPET CAP APPLIED TO EXISTING PARAPET WITH ADDED DOUBLE TOP PLATE. SEAL JOINTS.
 - NEW DRIVE THRU WINDOW
 - NEW METAL PARAPET CAP ON NEW/EXTENDED PARAPET. PAINT AS INDICATED.
 - NEW STOREFRONT WINDOW ASSEMBLY
 - PAINT EXISTING BOLLARD AS INDICATED.
 - PAINT EXISTING SAFETY RAIL AS INDICATED.
 - 3/4" x 1/2" REVEAL AT COPLANAR EIFS SURFACE TREATMENT TRANSITIONS.
 - NEW EIFS FINISH WALL SURFACE AS NOTED.
 - NEW STOREFRONT ENTRY DOORS. SEE A100.
 - REPAIR/REPAINT ROOF ACCESS LADDER, MATCH ADJACENT WALL SURFACE COLOR.
 - EXISTING ROOF (BEYOND)
 - EXISTING ROOF TOP/VENT UNIT.
 - SIGNAGE DIMENSIONS FOR REFERENCE ONLY. COORDINATE WITH SIGNAGE VENDOR FOR SPECIFIC DIMENSIONS.

1 FRONT (NORTH) ELEVATION
SCALE: 1/4"=1'-0"

MATERIAL DISTRIBUTION - NEW (EAST ELEV.)		
MATERIAL	SQUARE FEET	PERCENTAGE
OVERALL	1,507.1	100%
EIFS - BRICK PATTERN (WHITE)	44.4	3.4%
EIFS - SCORED (BROWN)	485.4	32.2%
EIFS - GRAY	73.5	4.9%
EIFS - RED	44	3.2%
EIFS - WHITE	528	35%
GLAZING-WINDOWS	208.3	13.8%
PREFAB CANOPIES/ FASCIA BAND	81.3	5.4%
COPINGS (METAL)	28.2	1.8%
SIGNAGE (APPROXIMATE-SUPPLIED BY SEPARATE VENDOR UNDER SEPARATE PERMIT)	4.1	.3%



2 DRIVE THRU (EAST) ELEVATION
SCALE: 1/4"=1'-0"

PLANNING-DEVELOPMENT REVIEW

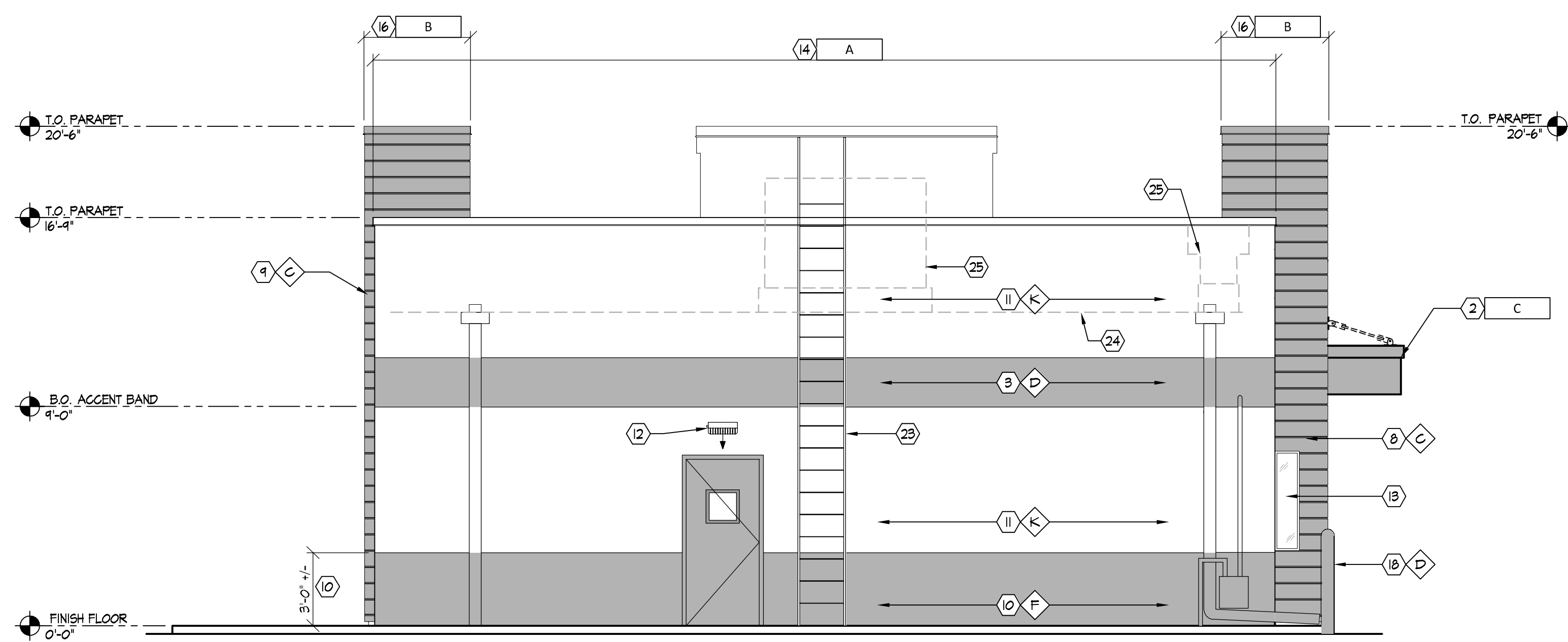
REGISTRATION SEAL
ARCVISION
 INCORPORATED
 ARCHITECTURE • ENGINEERING • STORE PLANNING
 SAINT LOUIS / DALLAS / LAS VEGAS / ORLANDO
 1950 CRAIG ROAD, SUITE 300 ST. LOUIS, MO 63146
 PH: (314) 415-2400 FAX: (314) 415-2300 www.arcv.com

Arby's

ARBY'S INSPIRE REMODEL
 2601 EAST MAIN STREET
 PLAINFIELD, IN 46168
 STORE # 5651

REV.	DATE	DESCRIPTION	NAME
1	08/06/19	PLANNING	ME
2	08/06/19	CLIENT COMMENTS	ME
3	08/06/19	PLANNING COMMENTS	ME

PROJECT NO: 180810
 DRAWN BY: ME
 CHECKED BY: JOW
 ISSUE DATE: 08/06/19
EXTERIOR ELEVATIONS
A401



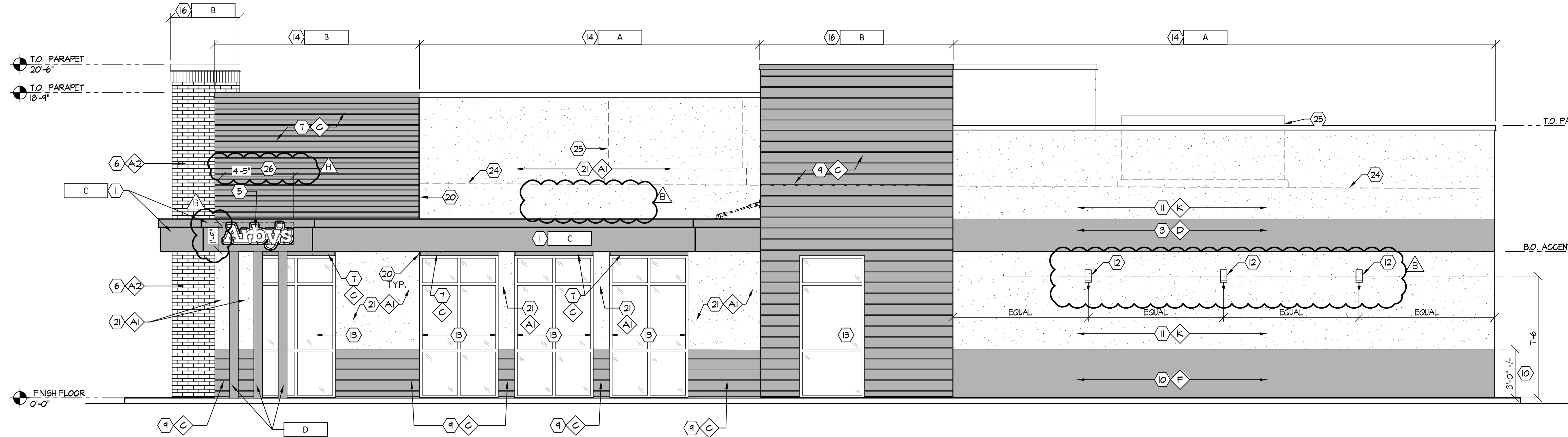
1 REAR (SOUTH) ELEVATION
SCALE: 1/4"=1'-0"

MATERIAL DISTRIBUTION - NEW (SOUTH ELEV.)		
MATERIAL	SQUARE FEET	PERCENTAGE
OVERALL	645.4	100%
EIFS - SCORED (BROWN)	72.2	10.2%
EIFS - GRAY	100.9	15.1%
EIFS - RED	74.1	10.6%
EIFS - WHITE	349	51.4%
WINDOW GLAZING	4	0.3%
PREFAB CANOPIES/ FASCIA BAND	6	0.8%
COPING (METAL)	15.3	2.1%
GLAZING-DOORS	23.3 (13 GLAZED)	3.3 (1)

FINISH SCHEDULE			
MARK	MANUFACTURER	DESCRIPTION	NOTES
FINISHES			
A	DRYVIT	EIFS WALL SYSTEM	COLOR: ARBY081030 TEXTURE: STANDARD
B	DRYVIT	CUSTOM BRICK SPECIALTY FINISH WITH 28 PT. 3/8" NEW YORK STYLE TEMPLATE	BASE COAT: DRYVIT 'NCB' BRICK LAYER: ARBY121020, QUARZPUTZ GROUT LAYER: ARBY111004
C	NOT USED	---	---
D	DRYVIT	EIFS WALL SYSTEM WITH V-GROOVE REVEAL 8" O.G.	COLOR: ARBY121030 TEXTURE: SANDBLAST
E	SHERWIN WILLIAMS	SW #6664 STOP	SATIN FINISH
F	NOT USED	---	---
G	SHERWIN WILLIAMS	SW #1024 FUNCTIONAL GRAY	SATIN FINISH
H	SHERWIN WILLIAMS	SW #2808 ROCKWOOD DARK BROWN	SATIN FINISH
K	SHERWIN WILLIAMS	SW #1005 PURE WHITE	SATIN FINISH
METALS			
A	EXCEPTIONAL METALS/ DURO-LAST	TWO-PIECE SNAP-ON METAL COPING REGAL WHITE/ DURO-LAST #R10/TEB1	FOR USE WITH DURO-LAST ROOFING SYSTEM DETAIL FAB10
B	EXCEPTIONAL METALS/ DURO-LAST	TWO-PIECE SNAP-ON METAL COPING DARK BRONZE/ DURO-LAST #R10/TEB1	FOR USE WITH DURO-LAST ROOFING SYSTEM DETAIL FAB10
C	PRE-FABRICATED CANOPY/BAND	PRODUCT CODE: 9440-3014BR PRODUCT NAME: FC SD RAL 3000 E-CLAMP 1/2"	---
D	PRE-FABRICATED POST	PRODUCT CODE: 4840-8045TR PRODUCT NAME: FC SD RAL 801T C/COC. BROWN	---
E	BERRIDGE	STANDING SEAM METAL ROOF	ZINC GRAY

- PAINT ALL EXPOSED METERS, SERVICE ENTRANCES, GAS PIPE, ROOF ACCESS LADDER, ETC. TO MATCH ADJACENT EXTERIOR WALL SURFACE.
- MAKE SURE THAT WALL KEEPS AND FLASHING ARE INSTALLED CORRECTLY. DO NOT BLOCK KEEPS.
- ALUMINUM STOREFRONT TO BE DARK BRONZE. REFER TO SUCCESSOR LICENSING SCOPE OF WORK.
- ALL EXTERIOR GLAZING TO BE 1" INSULATED GLAZING.
- BASIS OF DESIGN FOR THE EIFS WALL SYSTEM IS DRYVIT OUTSULATION PLUS MD. EIFS WALL SYSTEM IS 2" THICK UNLESS NOTED OTHERWISE. INSTALL EIFS PRODUCT IN STRICT ACCORDANCE WITH MANUFACTURER'S SPECIFICATIONS AND DETAILS.
- SIGNAGE IS SHOWN FOR REFERENCE ONLY. FINAL SIZE, LOCATION AND QUANTITY TO BE DETERMINED BY SIGNAGE VENDOR. SIGNAGE VENDOR SHALL PERMIT ALL SIGNS UNDER SEPARATE COVER.
- UNDERSIDES OF ALL EXTERIOR (HORIZONTAL) OVERHANGS TO BE PAINTED (K).
- WALK-IN COOLER AND TRASH ENCLOSURE TO MATCH ELEVATIONS OF RESTAURANT (C) OR (F).
- PAINT EXISTING BOLLARDS (D).

- KEY NOTES** (X)
- INSTALL CANOPY/ACCENT BAND AT 9'-0" A.F.F.
 - CENTER DRIVE THRU CANOPY ON DRIVE THRU WINDOW.
 - APPLY RED PAINTED ACCENT BAND AT 9'-0" A.F.F.
 - ARBY'S HAT SIGN CENTERED ON BRICK PATTERN EIFS BY SIGN VENDOR.
 - NEW ARBY'S SIGN ON CANOPY, BY SIGN VENDOR.
 - INSTALL BRICK PATTERNED EIFS.
 - INSTALL BROWN EIFS WITH 4" O.G. V-GROOVES.
 - INSTALL BROWN EIFS WITH 8" O.G. V-GROOVES AT THE DRIVE THRU BUMP-OUT. USE BROWN METAL COPING AT TOP OF WALL.
 - INSTALL COPINGS WITH 8" O.G. V-GROOVES, USE BROWN METAL COPING AT TOP OF WALL.
 - PAINT 3'-0" COORDINATE WITH TOP OF EXISTING EIFS BASE) TALL GRAY ACCENT BAND AT BOTTOM OF WALL AROUND BACK HALF OF BUILDING AND COOLER/FREEZER WALLS. PAINT ELECTRIC/GAS METERS AND DOOR.
 - PATCH/REPAIR EXISTING EIFS/STUCCO AS REQUIRED. PAINT AS INDICATED.
 - INSTALL WALL MOUNTED LIGHT FIXTURE. SEE ELECTRICAL.
 - EXISTING STOREFRONT WINDOWS TO REMAIN. PAINT EXPOSED FLASHING TO MATCH ADJACENT WALL BELOW.
 - NEW METAL PARAPET CAP APPLIED TO EXISTING PARAPET WITH ADDED DOUBLE TOP PLATE. SEAL JOINTS.
 - NEW DRIVE THRU WINDOW.
 - NEW METAL PARAPET CAP ON NEW/EXTENDED PARAPET. PAINT AS INDICATED.
 - NEW STOREFRONT WINDOW ASSEMBLY.
 - PAINT EXISTING BOLLARD AS INDICATED.
 - PAINT EXISTING SAFETY RAIL AS INDICATED.
 - 3/4" x 1/2" REVEAL AT COPLANAR EIFS SURFACE TREATMENT TRANSITIONS.
 - NEW EIFS FINISH WALL SURFACE AS NOTED.
 - NEW STOREFRONT ENTRY DOORS. SEE A100.
 - REPAIR/REPAINT ROOF ACCESS LADDER, MATCH ADJACENT WALL SURFACE COLOR.
 - EXISTING ROOF (BEYOND).
 - EXISTING ROOF TOP/VENT UNIT.
 - SIGNAGE DIMENSIONS FOR REFERENCE ONLY. COORDINATE WITH SIGNAGE VENDOR FOR SPECIFIC DIMENSIONS.



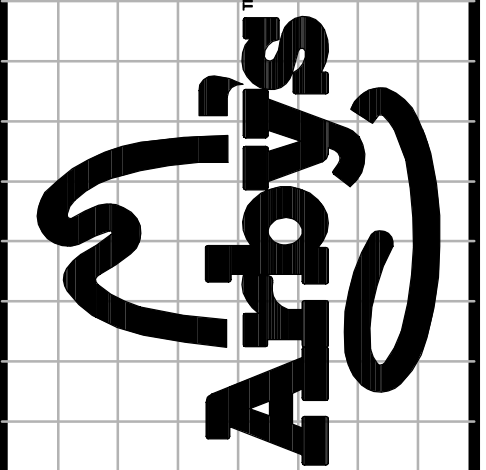
2 MAIN ENTRY (WEST) ELEVATION
SCALE: 1/4"=1'-0"

MATERIAL DISTRIBUTION - NEW (WEST ELEV.)		
MATERIAL	SQUARE FEET	PERCENTAGE
OVERALL	1486.8	100%
EIFS - BRICK PATTERN (WHITE)	50.4	3.4%
EIFS - SCORED (BROWN)	338.5	23%
EIFS - GRAY	49.8	6.7%
EIFS - RED	72.6	4.8%
EIFS - WHITE	619.3	41.6%
GLAZING-WINDOWS	204.2	13.7%
PREFAB CANOPIES/ FASCIA BAND	64.1	4.7%
COPING (METAL)	28.2	1.9%
SIGNAGE (APPROXIMATE-SUPPLIED BY SEPARATE VENDOR UNDER SEPARATE PERMIT)	4.1	2%

PLANNING-DEVELOPMENT REVIEW

REGISTRATION SEAL

ARCVISION
INCORPORATED
ARCHITECTURE • ENGINEERING • STORE PLANNING
SAINT LOUIS / DALLAS / LAS VEGAS / ORLANDO
1950 CRAIG ROAD, SUITE 300 ST. LOUIS, MO 63146
PH: (314) 415-2400 FAX: (314) 415-2300 www.arcv.com

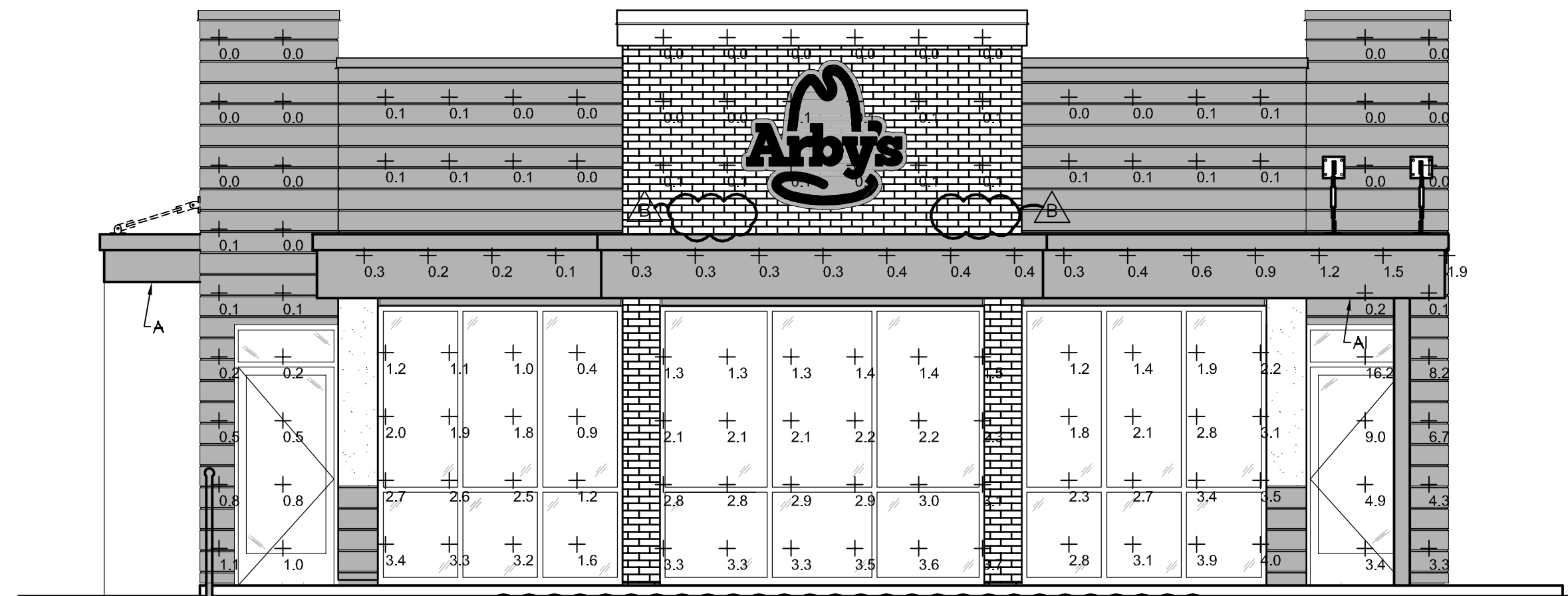


ARBY'S INSPIRE REMODEL
2601 EAST MAIN STREET
PLAINFIELD, IN 46168
STORE # 5651

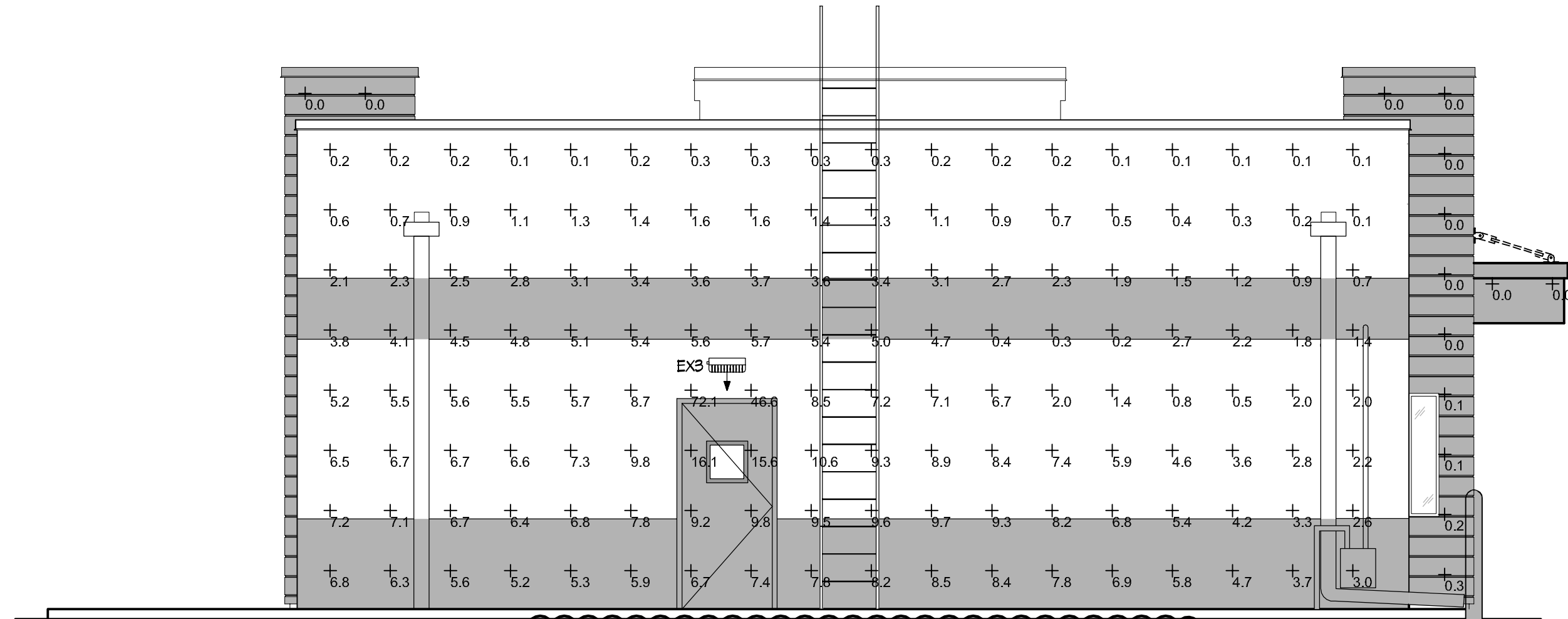
REV.	DATE	DESCRIPTION	NAME
1	08/25/19	PLANNING - CLIENT COMMENTS	ME
2	09/19/19	PLANNING COMMENTS	ME

PROJECT NO: 180810
DRAWN BY: ME
CHECKED BY: JOW
ISSUE DATE: 08/06/19

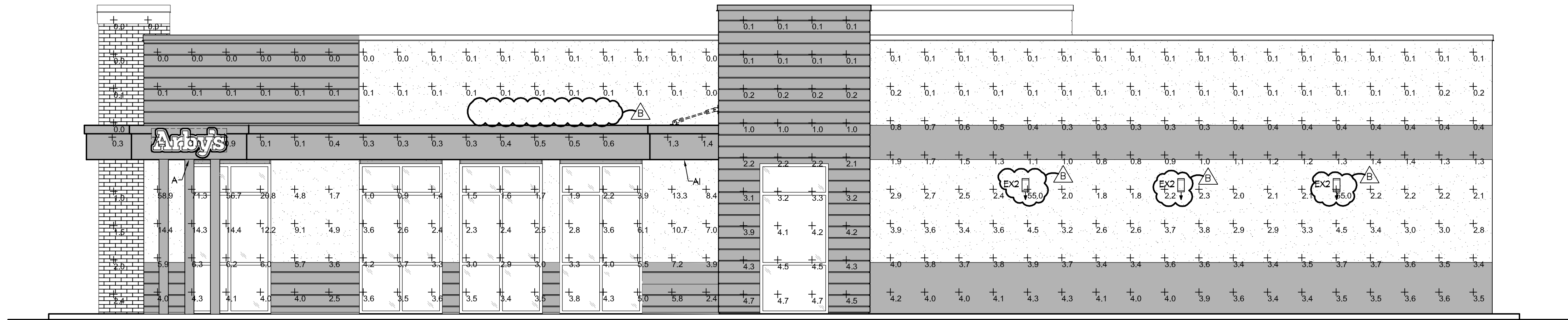
EXTERIOR ELEVATIONS
A402



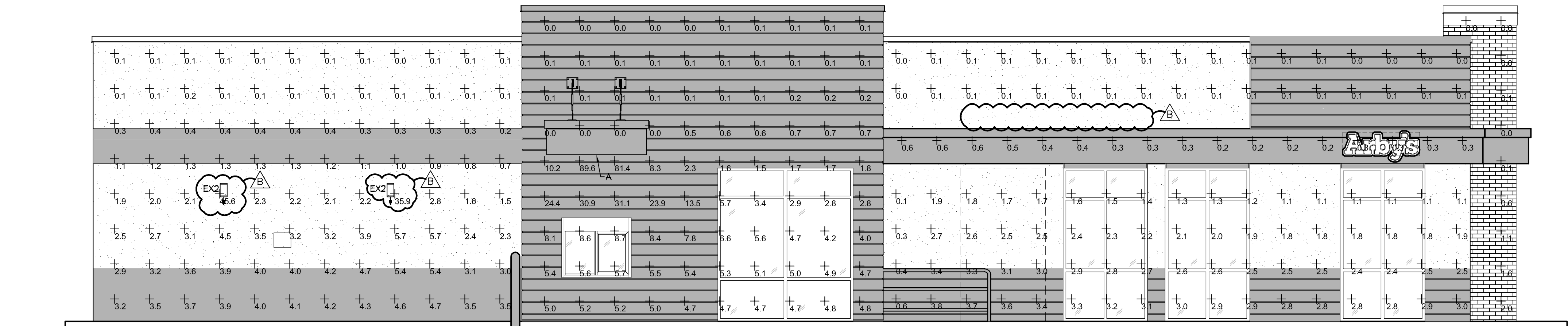
1 FRONT (NORTH) ELEVATION
SCALE: 1/4"=1'-0"



2 REAR (SOUTH) ELEVATION
SCALE: 1/4"=1'-0"



3 MAIN ENTRY (WEST) ELEVATION
SCALE: 1/4"=1'-0"



4 DRIVE THRU (EAST) ELEVATION
SCALE: 1/4"=1'-0"

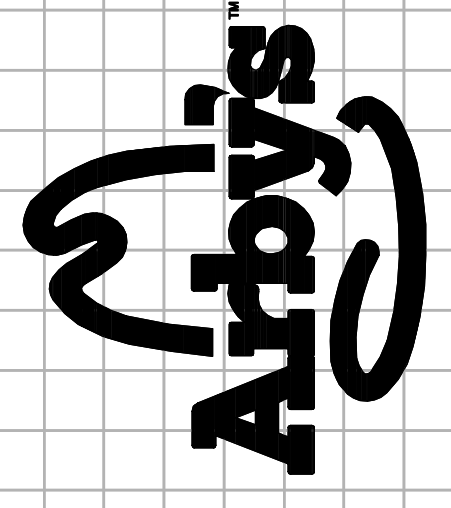
NOTES

A. REFER TO PHOTOMETRIC LIGHTING FIXTURE SCHEDULE ON SHEET C103 FOR FIXTURE INFORMATION.

B. SEE ARCHITECTURAL ELEVATIONS ON SHEET A401 AND A402 FOR ADDITIONAL INFORMATION.

REGISTRATION SEAL

ARCVISION
INCORPORATED
ARCHITECTURE • ENGINEERING • STORE PLANNING
SAINT LOUIS / DALLAS / LAS VEGAS / ORLANDO
1950 CRAIG ROAD, SUITE 300 ST. LOUIS, MO 63146
PH: (314) 415-2400 FAX: (314) 415-2400
www.arcv.com



ARBY'S INSPIRE REMODEL
2601 EAST MAIN STREET
PLAINFIELD, IN 46168
STORE # 5651

REV.	DATE	DESCRIPTION
1	09/19/19	PLANNING COMMENTS

PROJECT NO: 180810
DRAWN BY: DAL
CHECKED BY: SH
ISSUE DATE: 08/06/19

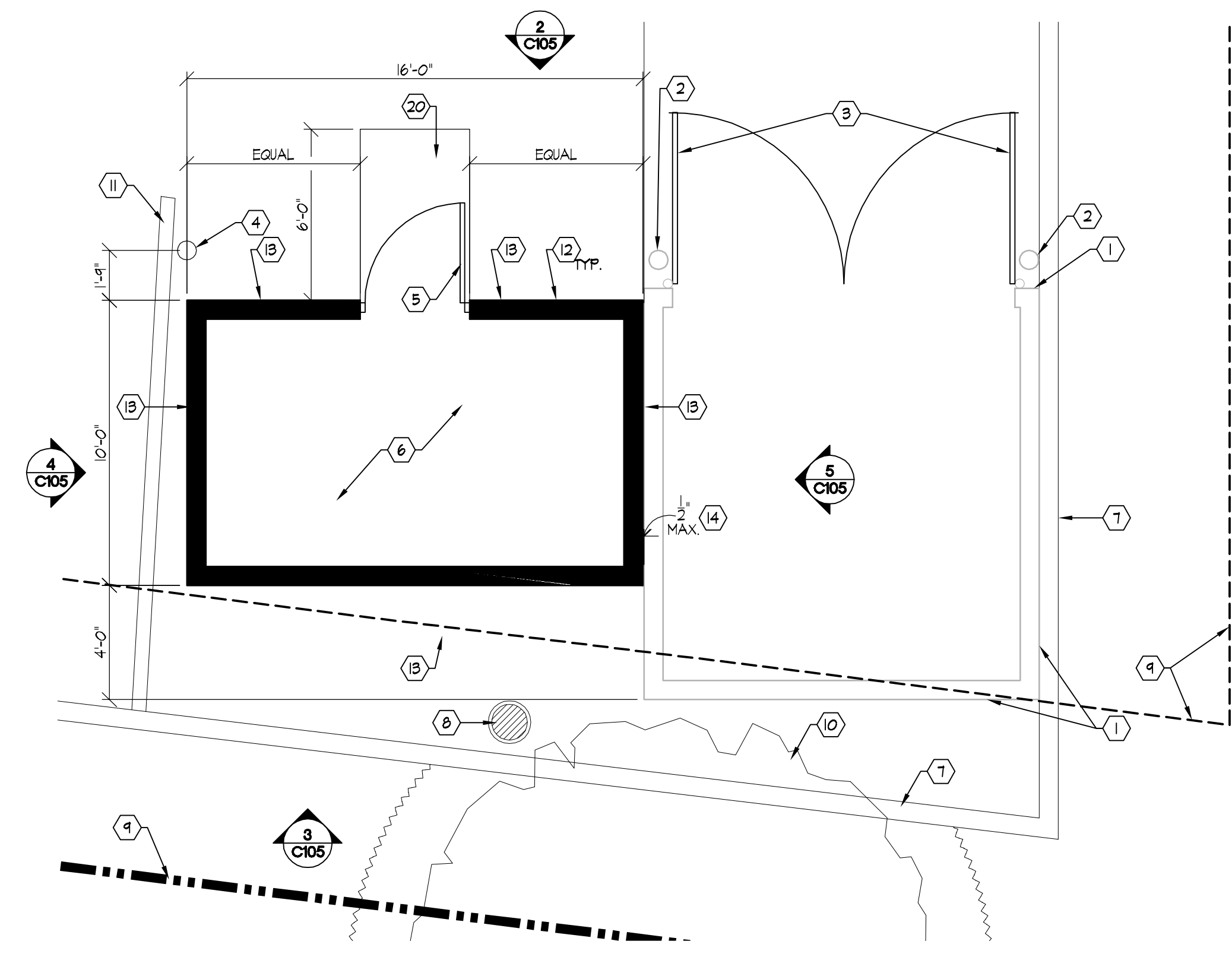
PHOTOMETRIC EXTERIOR ELEVATIONS
C104

PLAN - ELEVATIONS KEYED NOTES

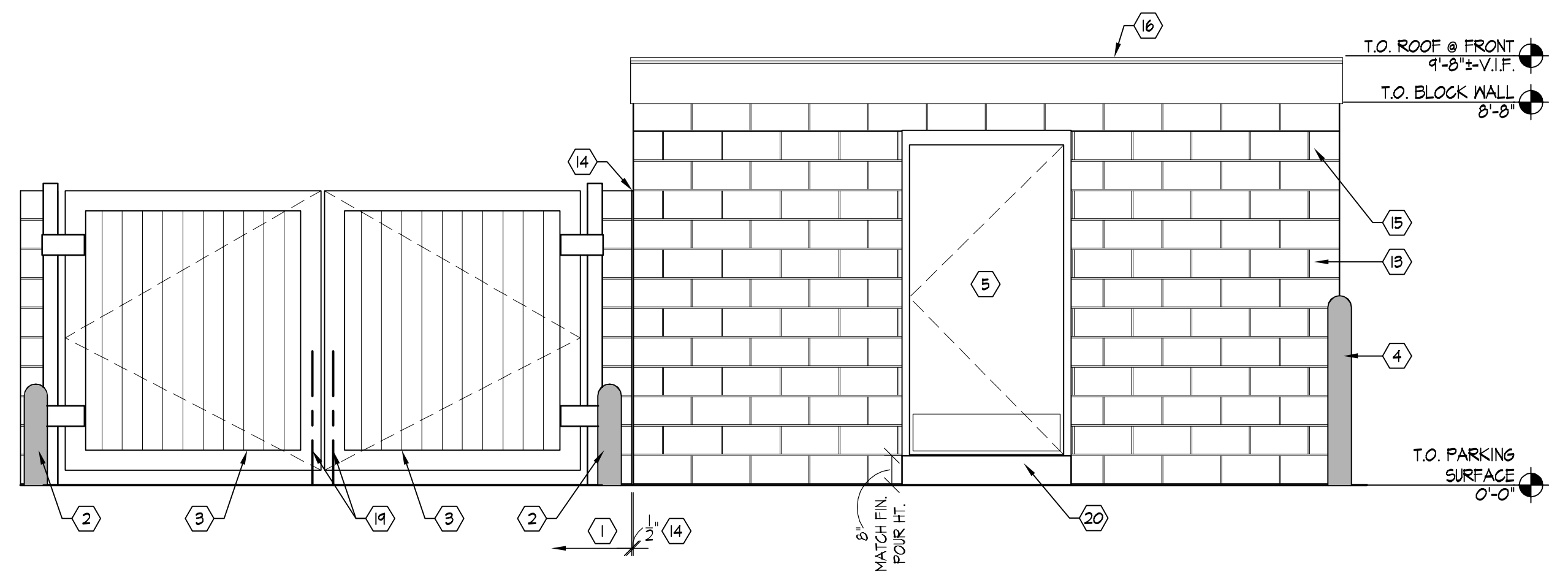
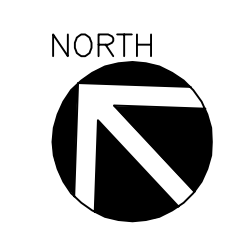
- (1) EXISTING CMU DUMPSTER ENCLOSURE. CLEAN AND PAINT ALL EXPOSED SURFACES 'ROCKWOOD BROWN'.
- (2) PAINT EXISTING BOLLARD 'STOP' RED.
- (3) INSTALL NEW COMPOSITE GATES (NATURE'S COMPOSITES, SIMTEK, OR SIMILAR) TO FIT EXISTING OPENING. MATERIAL TO BE WOOD-GRAINED AND MATCH 'ROCKWOOD BROWN'. IF COLOR CANNOT BE EXACTLY MATCHED, CONSULT WITH ARBY'S FOR AN ACCEPTABLE ALTERNATIVE. RETROFIT EXISTING HARDWARE TO ACCEPT NEW GATES.
- (4) NEW 6" BOLLARD. SEE 8/C101.
- (5) INSTALL NEW HOLLOW CORE METAL DOOR WITH METAL FRAME, 3'-6" WIDE BY 7'-0" HIGH. PAINT TO MATCH NEW (STOREFRONT) DOORS OF FACILITY.
 STORAGE HARDWARE GROUP:
 1 1/2 PR. HAGER HINGES ECBB 1100 26D
 1 HAGER 5100 GRADE 1 HEAVY DUTY SURFACE CLOSER
 1 SCHLAGE STOREROOM LOCKSET NDBOPD-RHO-626
 2 HAGER 1905 KICK PLATES 32D 8" X 38"
 1 SIGN- "STORAGE - EMPLOYEES ONLY"
 COORDINATE WITH OWNER ANY ADDITIONAL SECURITY HARDWARE
- (6) NEW 4" THICK, 6" 1/4 X 4 M/M.M. REINFORCED CONCRETE SLAB (FLOOR). FINISH SURFACE OF SLAB TO BE 8" ABOVE ADJACENT PAVED FINISHED SURFACE.
- (7) EXISTING CURB TO REMAIN.
- (8) EXISTING STORM DRAIN GRATE. DO NOT OBSTRUCT DURING ANY PHASE OF CONSTRUCTION.
- (9) EXISTING PROPERTY/SETBACK LINES. SEE C100.
- (10) EXISTING TREE. PROTECT DURING ALL PHASES OF CONSTRUCTION. SEE C100.
- (11) NEW PARKING STALL STRIPE. SEE C101.
- (12) SILICONE JOINT AT PARKING SURFACE SAM CUT/NEW POUR.
- (13) NEW CMU STORAGE ENCLOSURE WALL. PAINT VISIBLE SURFACES 'ROCKWOOD BROWN'. SEE 4/00 FOR SPEC.
- (14) SILICONE JOINT WITH BACKER ROD. COLOR MATCH PAINT.
- (15) HARDIE CEMENT BOARD TRIM, 1X12. COLOR MATCH 'ROCKWOOD BROWN' PAINT AS APPLIED TO BLOCK.
- (16) INSTALL 6AF 'ROYAL SOVEREIGN' CHARCOAL ARCHITECTURAL SHINGLES. ALL ACCESSORIES (DRIP, FLASHING) TO MATCH. COORDINATE WITH ROOFING SUPPLIER.
- (17) TRIM HARDIE (TRIM) BOARD TO CLEAR TOP OF ADJACENT BLOCK. SEAL JOINT WITH COLOR-MATCH SILICONE SEALANT.
- (18) 1/2" KEEP HOLES DRILLED THROUGH EXISTING CMU OF DUMPSTER ENCLOSURE TO ALLOW WATER TO MIGRATE OUT OF THE SPACE BETWEEN THE NEW/EXISTING BLOCK WALLS. BORINGS STOP AT SPACE, THEY DO NOT CONTINUE INTO/THROUGH THE NEW CMU OF THE STORAGE BUILDING WALL.
- (19) RE-USE/REPLACE TO MATCH SECURITY HARDWARE.
- (20) CAST IN PLACE CONCRETE RAMP.

GENERAL NOTES

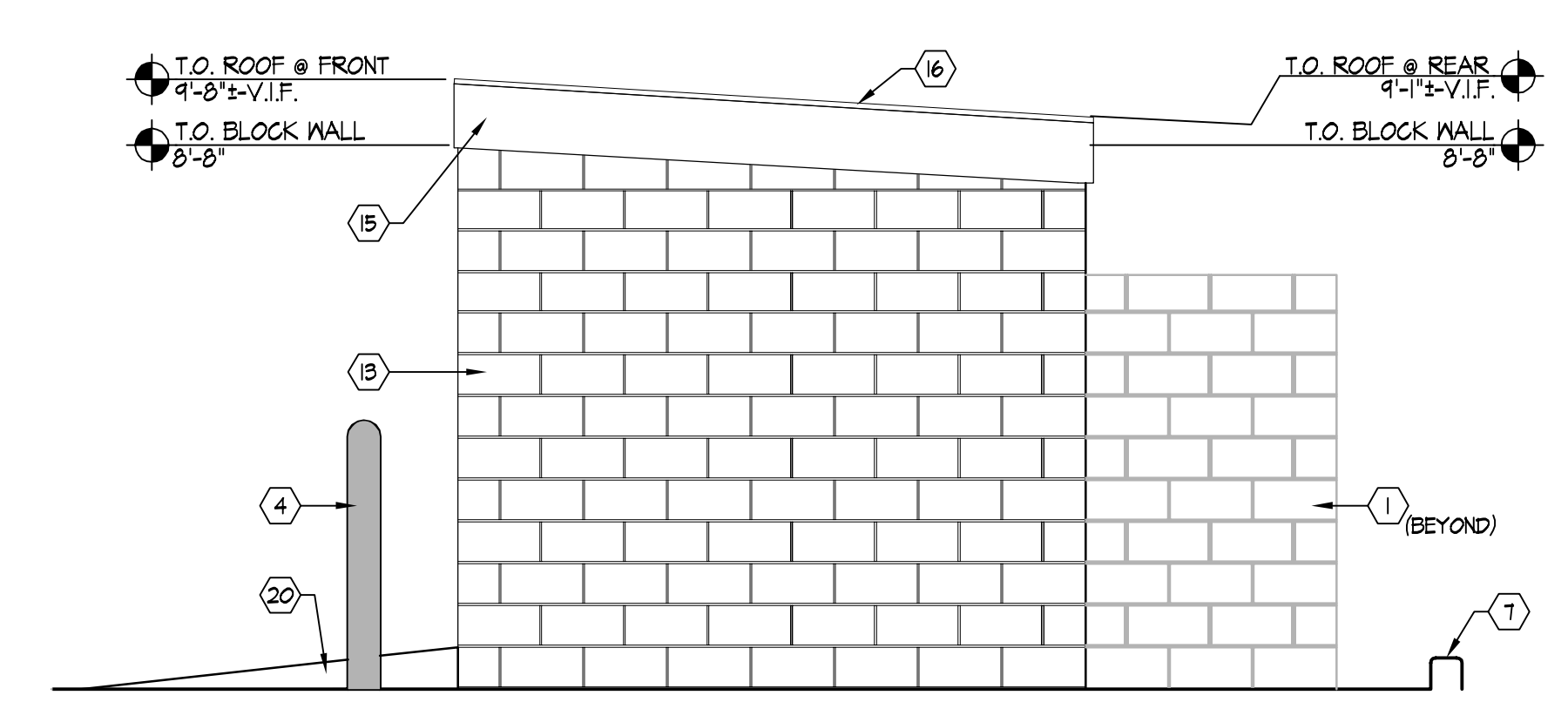
- A. ALL EXISTING DRAINAGE PATHWAYS SHALL BE MAINTAINED TO THE BEST OF THE ABILITY OF THE G.C. DURING NEW WORK. IF REWORK OF PAVED AREAS IMMEDIATE TO THE NEW STORAGE BUILDING IS REQUIRED, IT SHALL BE COORDINATED WITH FACILITIES.
- B. ALL NEW CONCRETE (BLOCK AND CAST) THAT IS NOT PAINTED TO BE COATED WITH (2) COATS OF A WATERPROOFING AGENT, SUCH AS THOMPSON'S WATER SEAL OR PERFORMANCE EQUAL. COORDINATE APPLICATION WITH MANUFACTURER DIRECTION.



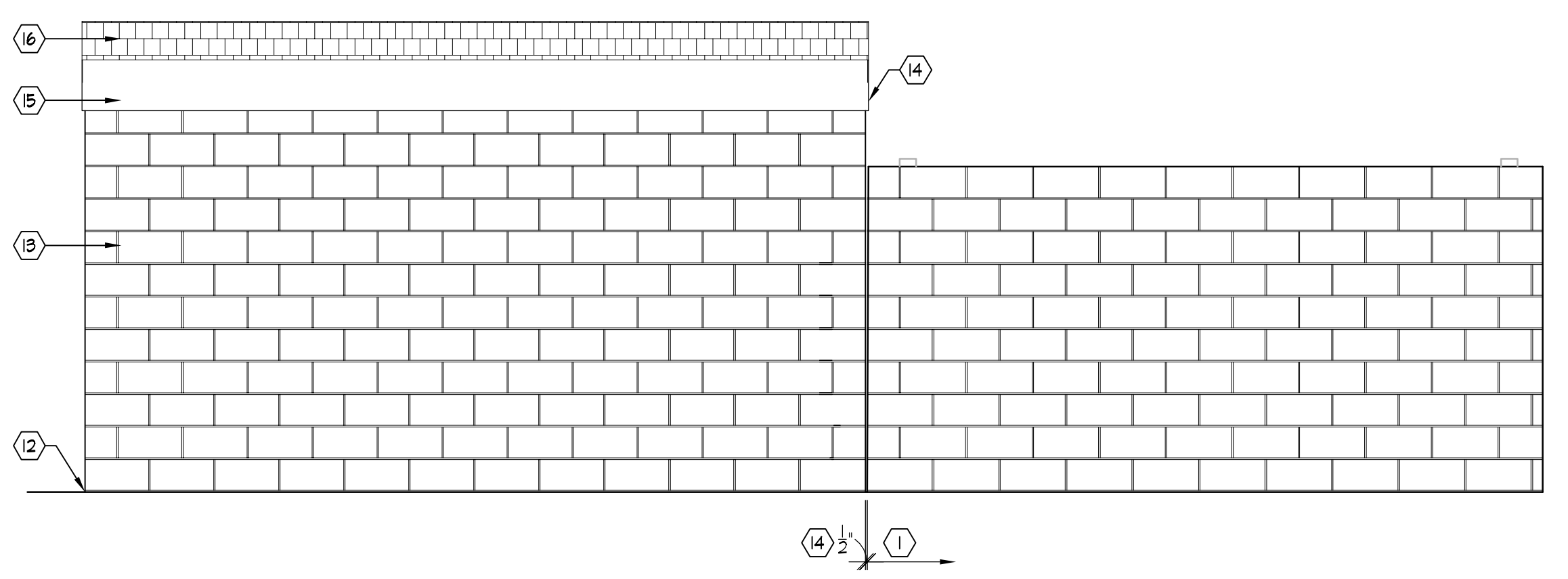
1 ENLARGED SITE PLAN AREA
SCALE: 1/4"=1'-0"



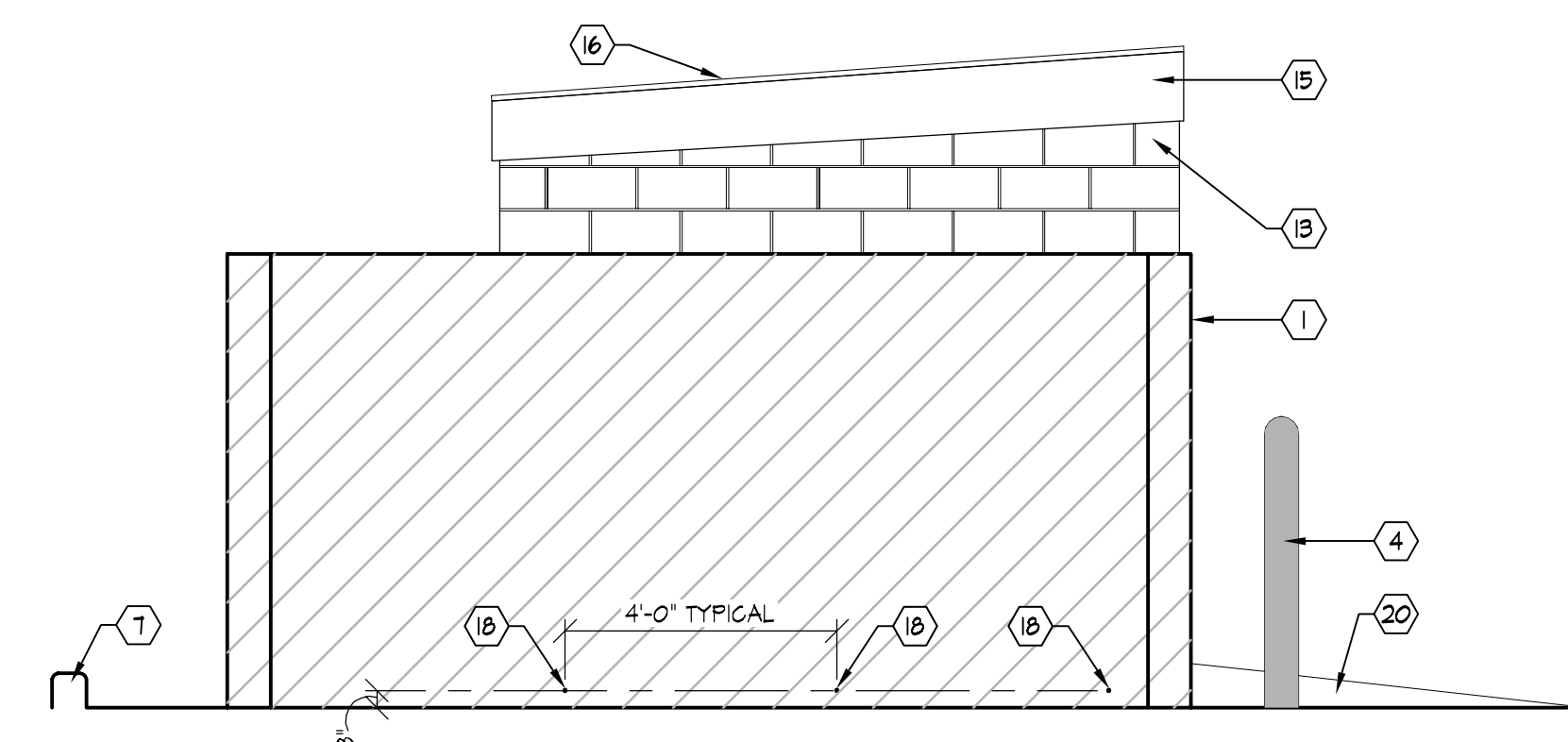
2 FRONT (EAST) ELEVATION
SCALE: 3/8"=1'-0"



4 SIDE (SOUTH) ELEVATION
SCALE: 3/8"=1'-0"



3 REAR (WEST) ELEVATION
SCALE: 3/8"=1'-0"



5 SIDE (NORTH) ELEVATION
SCALE: 3/8"=1'-0"

REGISTRATION SEAL

ARCVISION
INCORPORATED
ARCHITECTURE • ENGINEERING • STORE PLANNING
SAINT LOUIS / DALLAS / LAS VEGAS / ORLANDO
1950 ORANG ROAD, SUITE 300 ST. LOUIS, MO 63146
PH: (314) 415-2400 FAX: (314) 415-2300 www.arcv.com

Arby's

ARBY'S INSPIRE REMODEL
2601 EAST MAIN STREET
PLAINFIELD, IN 46168
STORE # 5651

REV.	DATE	DESCRIPTION
1	09/19/19	PLANNING COMMENTS

PROJECT NO: 180810
DRAWN BY: ME
CHECKED BY: ANH
ISSUE DATE: 09/11/19

C105

SITE - STORAGE OUTBUILDING