



RATIO OF MATERIALS:
BRICK = 22%
FIBER CEMENT PANELS = 43%
FIBER CEMENT LAP SIDING = 35%

01: FRONT ELEVATION

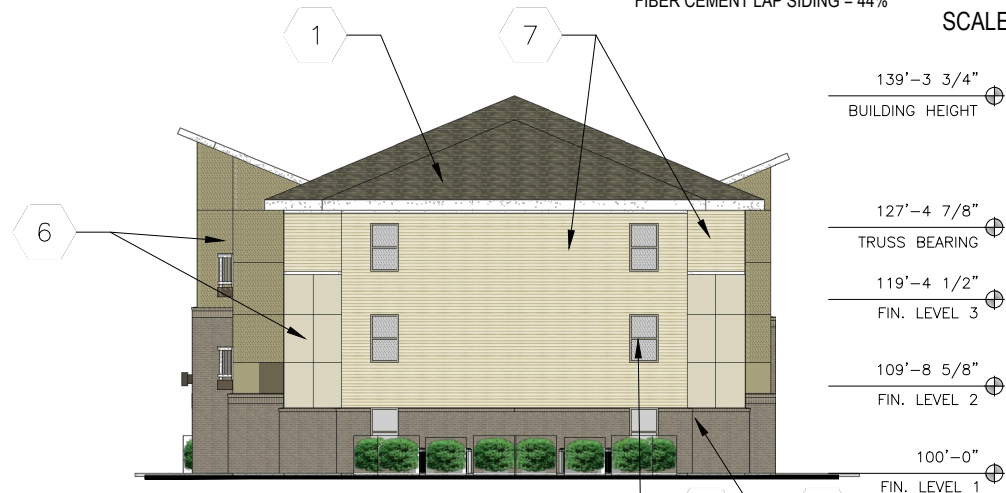
SCALE: 1" = 20'



RATIO OF MATERIALS:
BRICK = 21%
FIBER CEMENT PANELS = 35%
FIBER CEMENT LAP SIDING = 44%

02: REAR ELEVATION

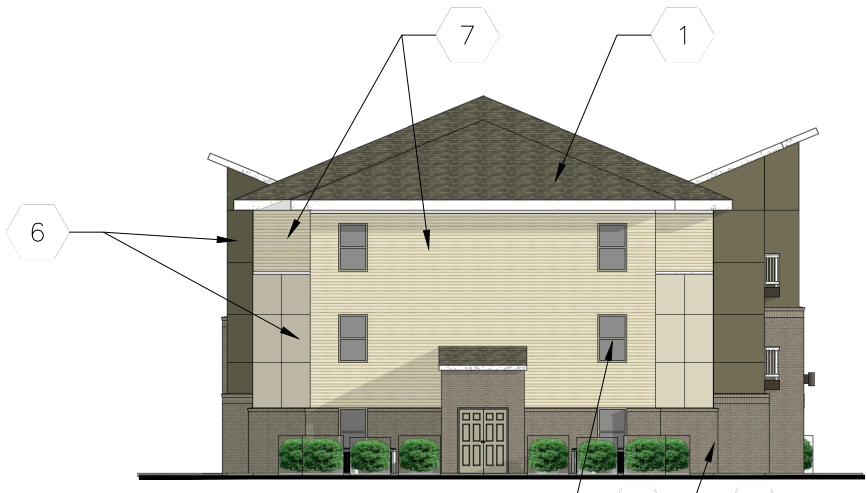
SCALE: 1" = 20'



RATIO OF MATERIALS:
BRICK = 28%
FIBER CEMENT PANELS = 15%
FIBER CEMENT LAP SIDING = 57%

04: RIGHT ELEVATION

SCALE: 1" = 20'



RATIO OF MATERIALS:
BRICK = 28%
FIBER CEMENT PANELS = 15%
FIBER CEMENT LAP SIDING = 57%

03: LEFT ELEVATION

SCALE: 1" = 20'

EXTERIOR ELEVATION KEY NOTES

1. ASPHALT DIMENSIONAL SHINGLES
2. JOINTS OF FIBER CEMENT PANEL.
3. FIBER CEMENT TRIM
4. BRICK VENEER
5. VINYL WINDOWS - SEE WINDOW SCHEDULE
6. FIBER CEMENT PANELS, WITH METAL REVEAL
7. FIBER CEMENT HORIZONTAL LAP SIDING

GENERAL NOTE:
PROVIDE 1X4 FIBER CEMENT TRIM BOARDS AT ALL CORNERS WHERE LAP SIDING OCCURS. PROVIDE METAL REVEAL TRIM PIECES AT ALL OUTSIDE CORNERS OF FIBER CEMENT PANELS.

RATIO OF MATERIALS:
BRICK = 22%
FIBER CEMENT PANELS = 42%
FIBER CEMENT LAP SIDING = 36%



HAVEN HOMES

STOUT HERITAGE PARKWAY
PLAINFIELD, INDIANA

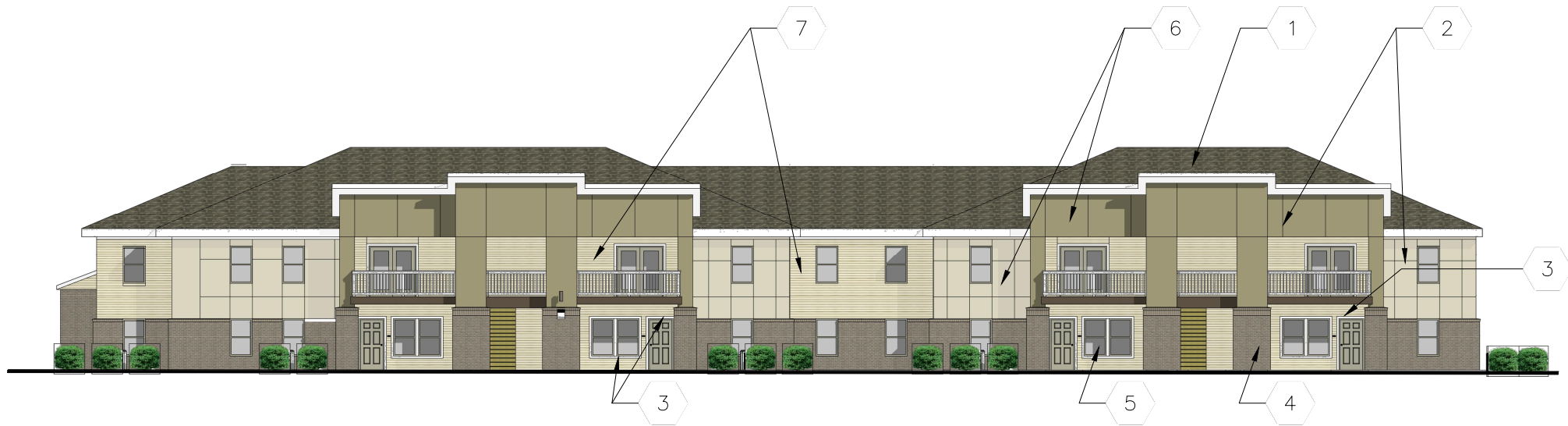
BLDG B1
ELEVATIONS

A201

08.30.19 | Revised PUD SUBMITTAL

SHEET TITLE

SHEET NO.



01: FRONT ELEVATION

SCALE: 1" = 20'

RATIO OF MATERIALS:
BRICK = 21%
FIBER CEMENT PANELS = 54%
FIBER CEMENT LAP SIDING = 25%



02: REAR ELEVATION

SCALE: 1" = 20'

RATIO OF MATERIALS:
BRICK = 26%
FIBER CEMENT PANELS = 50%
FIBER CEMENT LAP SIDING = 24%

EXTERIOR ELEVATION KEY NOTES

- 1. ASPHALT DIMENSIONAL SHINGLES
- 2. JOINTS OF FIBER CEMENT PANEL.
- 3. FIBER CEMENT TRIM
- 4. BRICK VENEER
- 5. VINYL WINDOWS - SEE WINDOW SCHEDULE
- 6. FIBER CEMENT PANELS, WITH METAL REVEAL
- 7. FIBER CEMENT HORIZONTAL LAP SIDING

GENERAL NOTE:
PROVIDE 1X4 FIBER CEMENT TRIM BOARDS AT ALL CORNERS WHERE LAP SIDING OCCURS. PROVIDE METAL REVEAL TRIM PIECES AT ALL OUTSIDE CORNERS OF FIBER CEMENT PANELS.

RATIO OF MATERIALS:
BRICK = 27%
FIBER CEMENT PANELS = 39%
FIBER CEMENT LAP SIDING = 34%



04: SIDE ELEVATION

SCALE: 1" = 20'

RATIO OF MATERIALS:
BRICK = 35%
FIBER CEMENT PANELS = 39%
FIBER CEMENT LAP SIDING = 26%



03: SIDE ELEVATION

SCALE: 1" = 20'

RATIO OF MATERIALS:
BRICK = 36%
FIBER CEMENT PANELS = 40%
FIBER CEMENT LAP SIDING = 26%



HAVEN HOMES
STOUT HERITAGE PARKWAY
PLAINFIELD, INDIANA

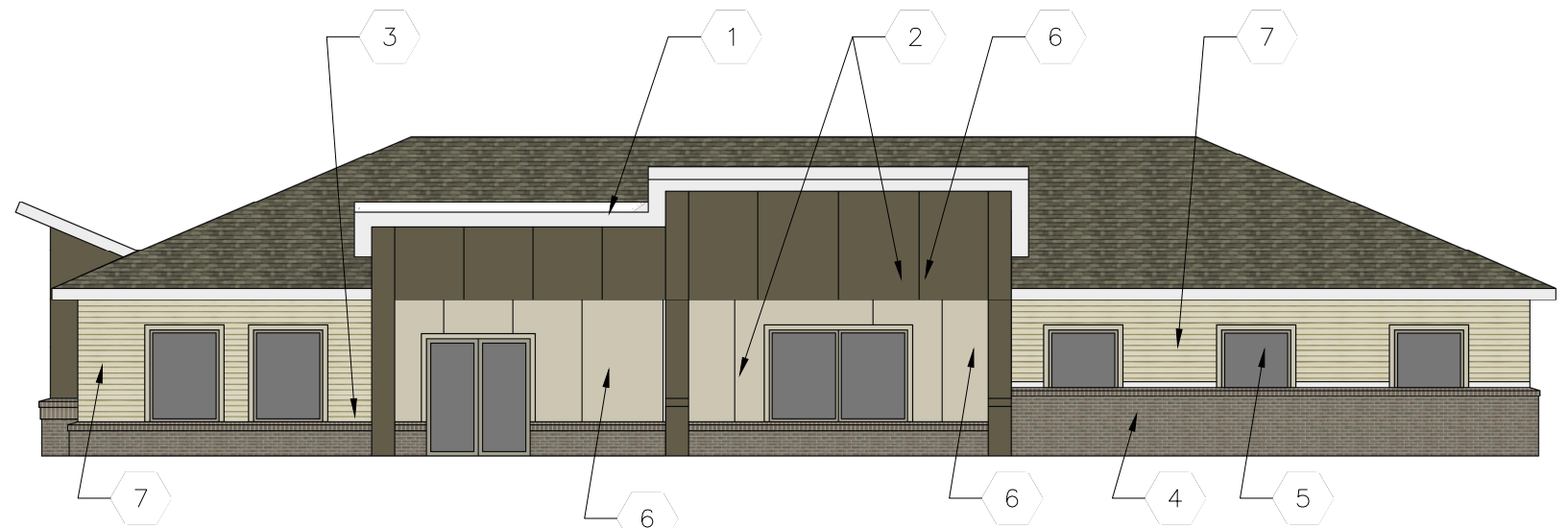
BLDG B2
ELEVATIONS

A202

08.30.19 | Revised PUD SUBMITTAL

SHEET TITLE

SHEET NO.



EXTERIOR ELEVATION KEY NOTES

1. ASPHALT DIMENSIONAL SHINGLES
2. JOINTS OF FIBER CEMENT PANEL.
3. FIBER CEMENT TRIM
4. BRICK VENEER
5. VINYL WINDOWS - SEE WINDOW SCHEDULE
6. FIBER CEMENT PANELS, WITH METAL REVEAL
7. FIBER CEMENT HORIZONTAL LAP SIDING

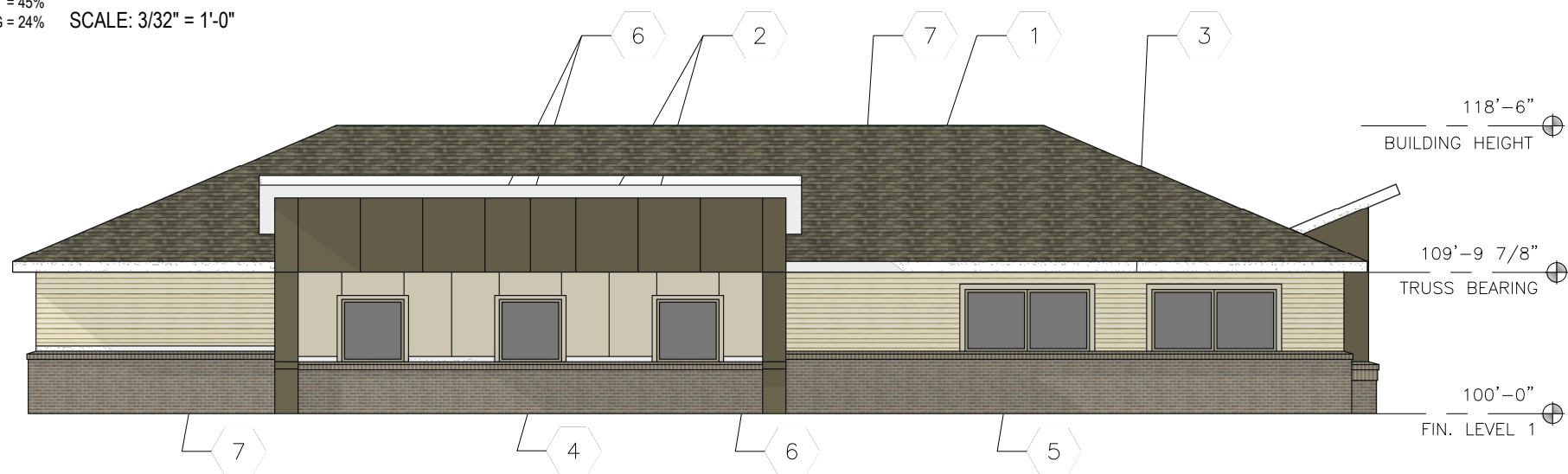
GENERAL NOTE:
PROVIDE 1X4 FIBER CEMENT TRIM BOARDS AT ALL CORNERS WHERE LAP SIDING OCCURS. PROVIDE METAL REVEAL TRIM PIECES AT ALL OUTSIDE CORNERS OF FIBER CEMENT PANELS.

RATIO OF MATERIALS:
BRICK = 35%
FIBER CEMENT PANELS = 39%
FIBER CEMENT LAP SIDING = 26%

RATIO OF MATERIALS:
BRICK = 31%
FIBER CEMENT PANELS = 45%
FIBER CEMENT LAP SIDING = 24%

01: FRONT ELEVATION

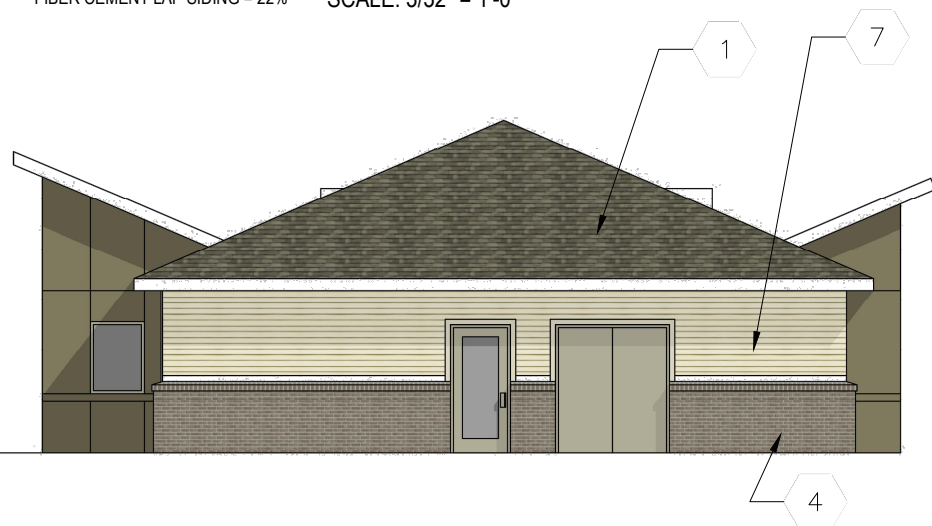
SCALE: 3/32" = 1'-0"



RATIO OF MATERIALS:
BRICK = 42%
FIBER CEMENT PANELS = 36%
FIBER CEMENT LAP SIDING = 22%

02: REAR ELEVATION

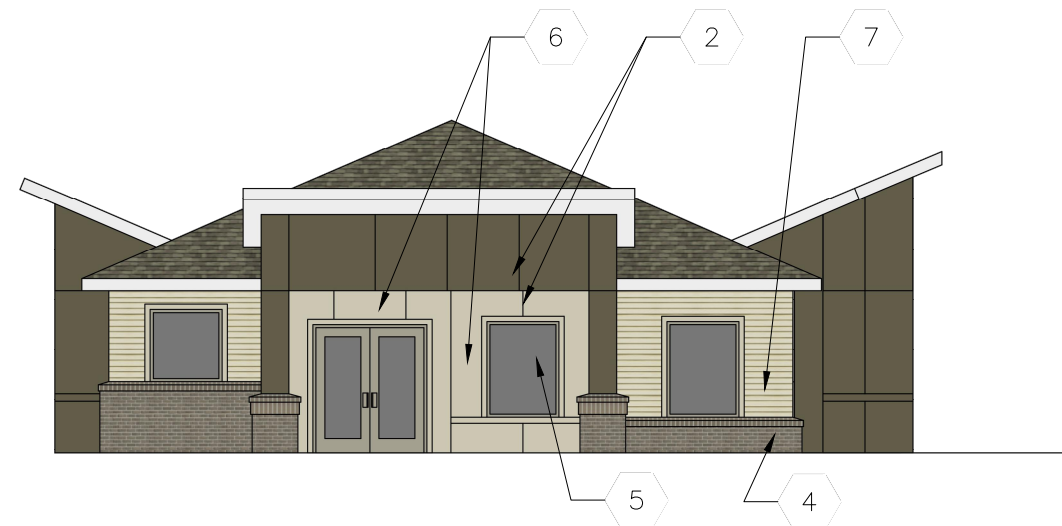
SCALE: 3/32" = 1'-0"



RATIO OF MATERIALS:
BRICK = 34%
FIBER CEMENT PANELS = 39%
FIBER CEMENT LAP SIDING = 27%

04: SIDE ELEVATION

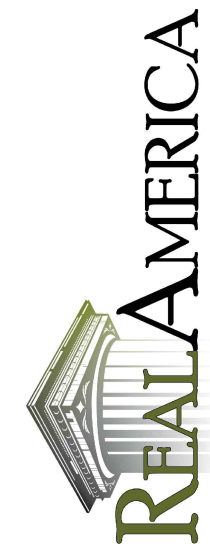
SCALE: 3/32" = 1'-0"



RATIO OF MATERIALS:
BRICK = 35%
FIBER CEMENT PANELS = 39%
FIBER CEMENT LAP SIDING = 26%

03: SIDE ELEVATION (MAIN ENTRY)

SCALE: 3/32" = 1'-0"



HAVEN HOMES
STOUT HERITAGE PARKWAY
PLAINFIELD, INDIANA

BLDG B3
ELEVATIONS

A203

08.30.19 | Revised PUD SUBMITTAL

SHEET TITLE

SHEET NO.