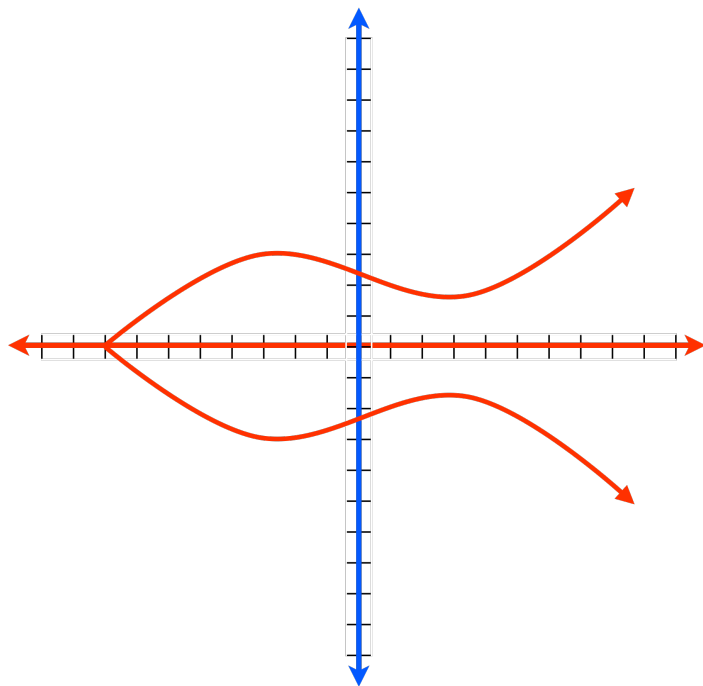
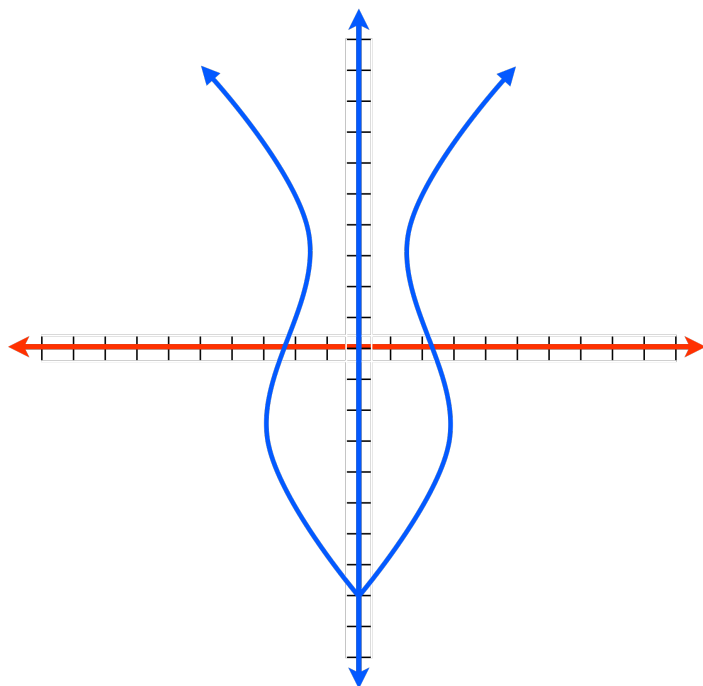


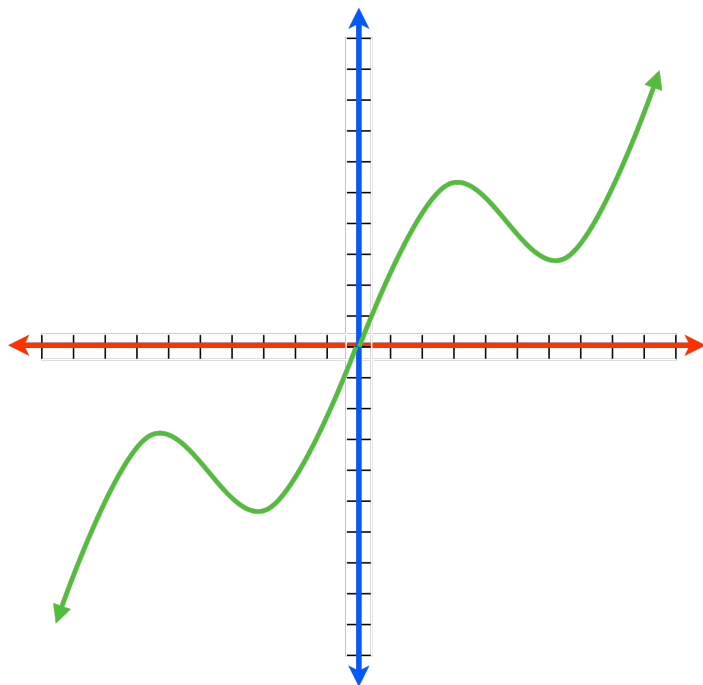
Symmetric with respect to x -axis



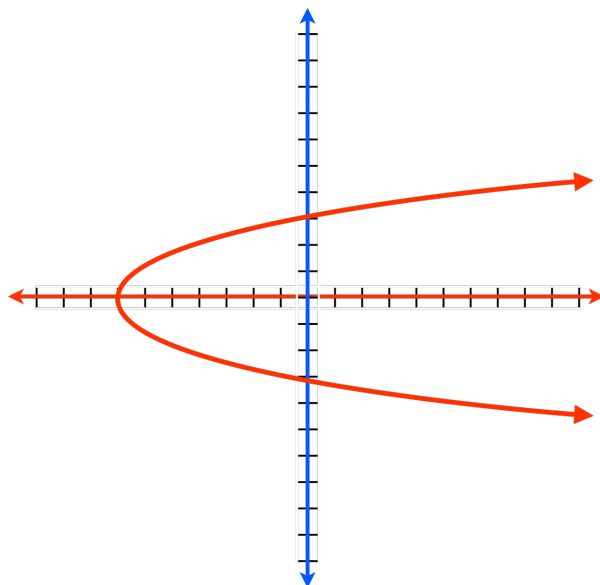
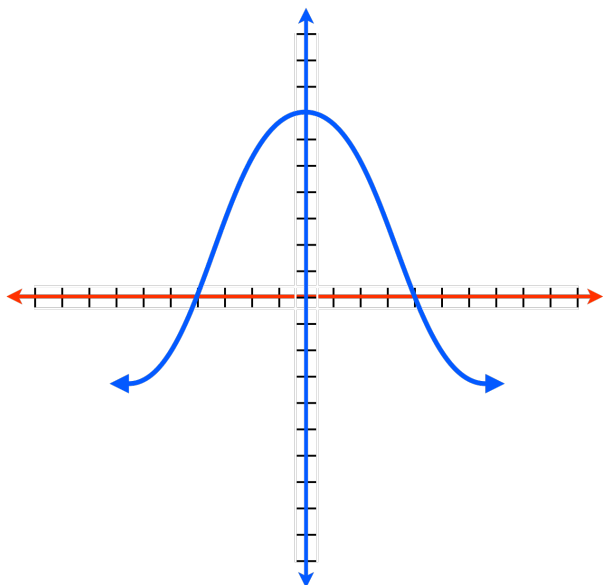
Symmetric with respect to y -axis



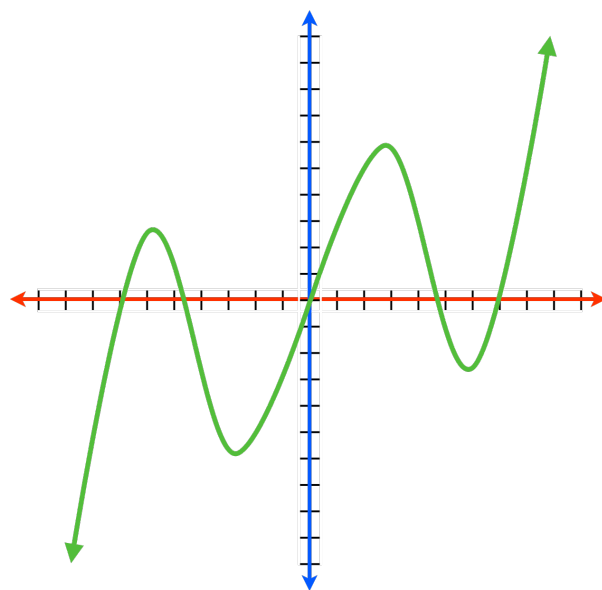
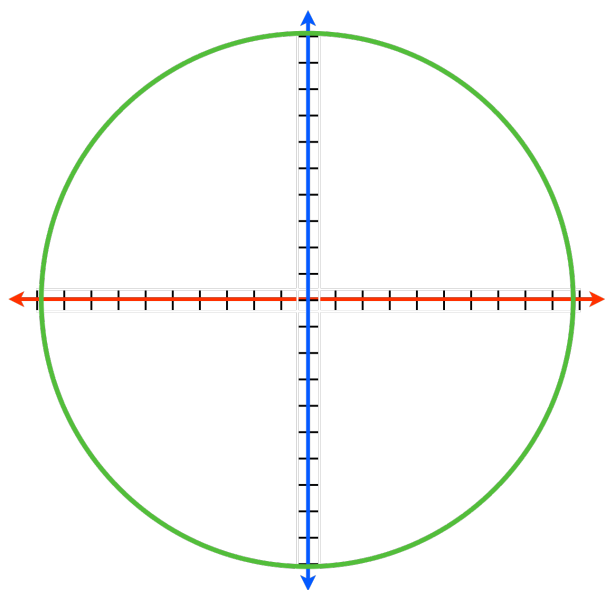
Symmetric with respect to **origin**



Tell whether the following graphs are symmetrical with respect to **x-axis**, **y-axis**, or **origin**.



Tell whether the following graphs are symmetrical with respect to x -axis, y -axis, or origin.



x -axis symmetry

$$(x, y) \rightarrow (x, -y)$$

y -axis symmetry

$$(x, y) \rightarrow (-x, y)$$

origin symmetry

$$(x, y) \rightarrow (-x, -y)$$

For the following (x, y) points, give the corresponding point that is symmetric with respect to x -axis, y -axis, and origin.

point (x, y)

x -axis $(x, -y)$

y -axis $(-x, y)$

origin $(-x, -y)$