

# The Honolulu Orchid Society

© Honolulu Orchid Society Inc.

## October 2022 Newsletter

### **HONOLULU ORCHID SOCIETY GENERAL MEMBERSHIP MEETING**

**Date:** Wednesday, October 12, 2022

**Time/Place:** 7:00 p.m. through Zoom Video Conference

**Program:** "Celebrating Our HOS Orchid Show 2022"

Come, join us to celebrate the return of our annual Orchid Show in pictures and stories. We will recap our show, visit with our vendors and enjoy our orchid displays.

You must register to attend the meeting. Register in advance for this meeting by Tuesday, October 11, 2022. Click **HERE** to register. After registering, you will receive a confirmation email containing information about joining the meeting.

The meeting is open to the public.

### **Mahalo Nui Loa**

Mahalo to all who attended last month's virtual membership meeting "**The canopy ecology of epiphytic orchids in the Osa Peninsula, Costa Rica**" presented by **Julia Douglas** who was in Mexico through Zoom. Thank you, **Julia**, for sharing your presentation in two parts. First presentation is her continuation of her study of the "**Biocultural Restoration of Prosthechea karwinskii in Oaxaca Mexico**". The people go into the forests to collect this unique orchid to adorn and use the flowers in celebrations to decorate their town. **Julia's** research is to accomplish the reattachment of the pseudobulbs, that were picked, to 15 host trees in the forest to regenerate new growth instead of just letting them die.

Second is "**Drivers of epiphytic orchid abundance and diversity in Osa Peninsula, Costa Rica**". **Julia** hoisted herself up into 150' to 200' foot tall trees in the forest to study epiphytic orchids growing on the branches high in the tree and was able to identify 40 common species in 35 different trees and also observed that other epiphytic orchids grew in the lower section of the trees.

Truly amazing and interesting. Your knowledge is totally appreciated.

Thank you, **Ben Kodama Jr.**, for providing 12 orchid plants at a discount for the September 2022 General Membership meeting.

## Orchidist of the Year

This award is to recognize and honor a member for outstanding and unselfish service and valuable contributions to the Society. This award can be presented to a member only once. **Nominations are due by Monday, October 31, 2022.** List the individual's contributions and attributes in the nomination write-up.

**Mail** to Honolulu Orchid Society, P O Box 558, Honolulu HI 96809-0558 Attn: Orchidist of the Year; or **email** to our President, Brad Lau at [bradlau23@gmail.com](mailto:bradlau23@gmail.com).

## Welcome New Member

We welcome our newest member **Christopher Matsunaga-Segi** of Aiea. Thank you for joining.

## Returned, We Have

The Honolulu Orchid Society's **2022 ANNUAL SHOW AND PLANT SALE** themed "**Return of the Orchids**" is just around the corner. See the poster on the right for dates and times of the Show.

**Kathy Sakuda** and **Adam Almeida** are co-chairing this event.

Ample parking is available with easy access from South King Street, just before the school's basketball court area next to Zippy's Restaurant.

The Kunia Orchid Society, Windward Orchid Society and the Honolulu Orchid Society will have floor displays. La Hui Okika (the Species Club) will have a table top display and members of HOS will be putting up a table top display of miniature orchids. Anyone with species or miniature orchids can place their plants in the respective table top displays.

THE HONOLULU ORCHID SOCIETY  
ORCHID SHOW & PLANT SALE

**RETURN of the ORCHIDS**

**October 7-8**  
2022  
9AM to 4PM\*

Washington Middle School  
Cafeteria, 1633 South King St.  
\* Plant sales close 3PM Saturday

Orchid displays ★ Plant sales  
Orchid culture ★ Country store

Friday, Oct 7 - 10AM, Grow orchids on cinder rock  
Saturday, Oct 8 - 10AM, Growing Phragmipediums as part of your collection

Session attendance is limited; visit our website for details.

Admission is free  
All are welcome!

[www.HonoluluOrchidSociety.org](http://www.HonoluluOrchidSociety.org)

## HOS Floor Display

Members of other orchid societies who would like to have their blooming orchid plants displayed are invited to place their plants in the Honolulu Orchid Society display. Register your plants and let Adam Almeida or Carol De Witt know that you have plants for the HOS display. Adam Almeida is our leader for the HOS display.

Help us get the word out about the show. It's **FREE**, the show is!

**HOS "Return of the Orchids" Floor Display** set up date is Thursday, October 6, 2022, starting at 9:00 am and need to be completed by 3:00 pm. Members and friends, please kokua your full support by providing the following:

- blooming orchid plants (make sure plants are in pots that can stand alone without falling), greens, and props.
- register blooming orchid plants by 10:30 am but NLT 11:00 am. (Cultivar name and all merit awards must be included on the registration form).
- help set up tables, placement of tall greens, wrap pots in black cloth.
- Start placement of plants – need to complete by 3:00 pm even though completion time of display set up is at 4:00 pm.
- greeneries to fill-in open spaces of the display (ferns, asst greens, pele's hair, ti leaves (assorted colors), rhaps palms, Song of India tall cuttings, asst bromeliads, etc.
- props to showcase our show theme - - "Star Wars" themed items like laser swords, toy figures, etc., stars and universe, moon, space themed objects. Please put your name on the props you bring, so it can be returned to you.
- your physical labor and time to help create, set up and break down our display at our show.

Ensure you tag your trays, loose pots and plants with your name so you get them back.

## HOS Country Store

**HOS Country Store will be reopening.** We are soliciting donations. Start gathering, boxing up your donations you'd like to give to our HOS Country Store. Anything that is slightly used, in good condition, but no longer needed in your household, etc. We would greatly appreciate the following:

- Baked Goods (assorted cookies, breads, brownies, snacks, etc.)
- Fresh Fruits/Vegetables in abundance (lemons, limes, starfruit, squash, herbs, etc.)
- Jams & Jellies
- Arts and Crafts, Usable "White Elephant" goods, vases, glassware, orchid books, etc.
- Garden Section needs donations of plants (Herbs, anything that grows...but please no weeds...), sanitized terra cotta pots 4" or larger, ceramic planters, plant books, plant hooks, gardening tools, and other related orchid items.
- Other sellable condition household "treasures" you want to donate are sooooo....totally welcomed!
- **NOT accepting used clothing and linens.**



Please drop off donations on Wednesday, October 5 -- 9 to 11 am; Thursday, October 6 -- 9 am to 2 pm; Friday, October 7 -- 9 am (last minute baked goodies)

Please pre-price your donations if possible. If you are unsure of prices, the country store volunteers will do the pricing.

To make things go a little smoother, please prepare an itemized list of your donations with your name, complete mailing address including zip code, email address and phone number for turn in at the Country Store (give to **JoAnn Higuchi, Kathy Sakuda**)-----otherwise PLEASE sign in the Country Store Donation Log Book (1) YOUR NAME, (2) COMPLETE MAILING ADDRESS, (3) PHONE NUMBER and EMAIL ADDRESS, and (4) ITEM/ITEMS YOU BROUGHT. DO NOT JUST DROP OFF AND LEAVE.

Members and friends, your generosity in this fundraising project is greatly appreciated. HOS is an all-volunteer 501(c)(3) nonprofit organization. Proceeds from the sale of these items will be used for our orchid culture and educational programs—making orchid resources available to the public and supporting scholarships and education.

## Orchid Culture

**The Show will feature two lectures:**

**Friday, October 7, 2022 - - 10:00 am – How to Grow Orchids on Cinder Rocks by Walter Hiraishi – Limited to the first 20 Participants - Walter Hiraishi** will be demonstrating how to grow orchids on cinder rocks. He will have samples on driftwood, baskets, etc. He will share other plants on different types of media in his collection and find out how he increased his selection without purchasing more plants. Participants will be given all materials for this session.

**Saturday, October 8, 2022 -- 10:00 am – Limited to the first 25 Participants - Ian Sandison and Kate Leonard** will talk about growing Phragmipedium orchids as part of your orchid collection. They will discuss their orchid growing set up and how they manage their mixed orchid collection. They will show you how they grow their Phragmipediums with their other orchids, including how they manage light, water, media, fertilizer, pests, and repotting.

**Plant Doctors at HOS 2022 Show.** What is wrong with my plant? Bring photos of your problem plant and look for our Plant Doctors **James Keach** and **Hannah Lutgen** at the Hawaii State Department of Agriculture table. They can help with orchid culture advice as well as problems.

Important information to include is the name of your plant, the symptoms that you are observing, the environmental growing conditions, along with the location where it grows. We love pictures! It helps to include a close-up of the problem area as well as a picture of the entire plant. This will help us diagnose your problem or identify your insect. (from the UH Got a Plant Question? Website).

## Pre-Sales

**Preordered HOS Shirts are in.** Shirts can be picked up at the HOS Country Store on Wednesday and Thursday, October 5 and 6, 10 am to 1 pm; and Friday and Saturday, October 7 and 8, 9 am to 3 pm. See Kathy Sakuda.

**Presale of Orchid Potting Mix** ends September 30, 2022. The order form was provided by HOS email dated 9-09-22 9:39 PM. If you still want to get the presale price, but have problems downloading the order form, just send your check made out to Honolulu Orchid Society, include your phone number and email address and mail to Honolulu Orchid Society, PO Box 558, Honolulu HI 96809-0558. Carol will fill in the form for you. Call Carol De Witt at (808) 597-4087 for information/questions. Pick up Wednesday and Thursday, October 5 and 6, 10 am to 2 pm and during show hours Friday and Saturday, October 7 and 8, at the HOS Country Store.

## Volunteers

Thank you to all who have volunteered to help make "Return of the Orchids" show a BLAST and ever so SPECIAL!

Volunteers, if you have questions concerning your assignments, please contact Carol De Witt at phone 808 597-4087 or email her at seabreeze808@outlook.com She will accept calls until 9:30 pm.

When you bring your blooming orchids for the display, please join us in creating our "Return of the Orchids".

Thursday, October 6, from 9:00 am to 3:00 pm to help set up and create our large floor display. Plant registration starts at 9:00 am and closes at 3:00 pm. All plants must be registered that are going to be placed in the display.

### Shift Info:

**Friday**, 10-7 are from 9:00 am to 12:30 pm (first shift) and from 12:30 pm to 4:00 pm (second shift);

**Saturday**, 10-8 are from 9:00 am to 12:30 pm (first shift) and 12:30 pm to 4:00 pm (second shift). Saturday's second shift includes helping with breakdown and clean-up-----the show closes at 4:00 pm.

**Lunch** will be provided for all who volunteer to work at the show. Workers report in at least 30 minutes prior to start of your shift. Morning shift workers will eat when called during their shift or when shift is completed, and afternoon shift workers will eat prior to start of their shift.

Reminder to all who help with the breakdown - - ALL PLANTS and PROPS used in the display belong to whomever brought them. They are not free for the taking. The owner's name should be on the items, but even if there is no name label, that does not mean you can take them. So please kokua and be considerate and not take them.

## In-Person Meetings Begin in November

**A-L-O-H-A!** "Celebrating the season. Appreciating friends and family. Wishing the best to all this Beautiful Season. Happy Thanksgiving!" November's General Membership Meeting is our return to In Person Meeting at Lanakila Elementary School Cafeteria on Wednesday, November 9, 2022 at 7:00 pm with a Holiday Celebration and Potluck. Bring your favorite

food to share.....be it appetizers, side dishes, main entrees, casseroles, soups, desserts, etc. If no can cook, too busy or stressed out to prepare a dish, that's okay--- just bring yourself and enjoy the evening with the rest of your orchid family. Paper goods and Beverage will be provided by HOS Refreshment Committee. More info to follow.

## **Mark Your Calendar**

**October Board of Trustees Meeting.** The HOS Board will meet through Zoom video conference on **Tuesday, October 11, 2022**, at 7:00 PM.

**November 2022 General Membership Meeting.** The November 2022 General Membership Meeting will take place at the Lanakila Elementary School Cafeteria, 717 N. Kuakini Street, Honolulu, HI on **Wednesday, November 9, 2022**, beginning at 7:00 pm. Program - **HOS Holiday Celebration and Potluck**

## **Recipe of the Month**

(from taste of home.com, 75 Vegetarian Lunch Ideas)

### **Vegetarian Linguine**

**Prep Time:** 30 minutes    **Servings:** 6

#### **Ingredients**

- 6 ounces uncooked linguine
- 2 tablespoons butter
- 1 tablespoon olive oil
- 2 medium zucchini, thinly sliced
- 1/2 pound fresh mushrooms, sliced
- 1 large tomato, chopped
- 2 green onions, chopped
- 1 garlic clove, minced
- 1/2 teaspoon salt
- 1/4 teaspoon pepper
- 1 cup shredded provolone cheese
- 3 tablespoons shredded Parmesan cheese
- 2 teaspoons minced fresh basil



#### **Instructions**

Cook linguine according to package directions. Meanwhile, in a large skillet, heat butter and oil over medium heat. Add zucchini and mushrooms; saute 3-5 minutes. Add tomato, onions, garlic and seasonings. Reduce heat; simmer, covered, about 3 minutes.

Drain linguine; add to vegetable mixture. Sprinkle with cheeses and basil. Toss to coat.



## Orchid Judging

The Honolulu Orchid Society's monthly orchid judging was conducted at the Lanakila Senior Center on Saturday, September 10, 2022. 15 plants were registered for judging. All the plants were screened and 5 were judged and received awards by the Judging Team. The awarded plants are shown below.

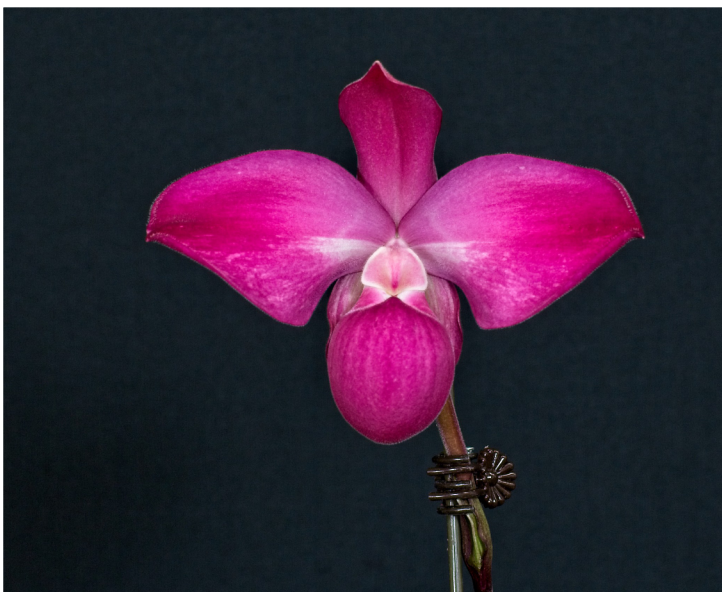
Honolulu Orchid Society judging was conducted at Aiea Orchid Club's first in-person meeting at the Aiea Elementary School on Monday, September 26, 2022. Six plants were registered for judging. None were awarded.

**There will be no judging on Saturday, October 8, 2022 at the Lanakila Senior Center. The judging session will instead be held on Thursday, October 6, 2022 at the Honolulu Orchid Society's 2022 Annual Orchid Show at the Washington Middle School Cafeteria.** All orchid plants in the displays (floor displays, table top displays and individual displays) will be eligible for merit awards and for trophy judging.



**Honolulu Orchid Society  
Merit Awards**  
Judged at Lanakila Senior Center  
September 10, 2022

Award No 2022-61  
**C. Summer Spot 'Carmela'**  
AM HOS (81.2 Pts.)  
Owner: Matthew McKnight III



Award No 2022-62  
**Phrag. Acker's Berry  
'Pacific Heights'**  
CR HOS (79.4 Pts.)  
Owner: Kate Leonard & Ian Sandison



Award No 2022-63  
**Rth. Adesso Tu 'Koko Head'**  
CR HOS (78.8 Pts.)  
Owners: Scot & Karen Mitamura



Award No 2022-64  
**Rlc. Golden Angel 'Yellow'**  
AM HOS (80.2 Pts.)  
Owner: Scot & Karen Mitamura



Award No 2022-65  
**Cdh. Hidden Gold 'Spots'**  
CDC HOS (81.2 Pts.)  
Owner: Nuuanu Orchids



## Orchid Tip of the Month by Scot Mitamura

As orchid shows begin to start again many of us will take this opportunity to add orchids to our collections. This is a good time to remind everyone about not adding any unwanted pests to our collections too. It does not matter where you buy from, but it is always smart to assume that there could be some new pest on that new orchid or plant. Remember that the worst pests often come from the best growers, so we must all be cautious no one is immune!

The best thing to do is to quarantine the new plants for about a month due to various adult pests and their eggs. During this time, you need to be extremely careful and observant. If you don't quarantine at least put them in a visible area that you can monitor.

Believe me, I was not serious about this, and today I'm paying the price. First spray everything with Bayer 3n1. This will kill adult insects, mites, and control most fungus, systemically. Extremely important is to do a follow up spraying within two weeks. This is to kill any emerging eggs that may have been laid. Most of our orchid pests have a life cycle within this time frame. Next, make sure that everything is treated with slug or snail bait, even if you do not see any damage. There are species that are really small, plus they are nocturnal so you may not see them. Once again, the second dose treatment is essential or control will be difficult to obtain. Check and remove any weeds. Weeds are the most overlooked pest in an orchid collection. Weeds do not have eggs but they have seeds and you most certainly will have them too. So, anticipate the next generation to emerge.

Examine the potting medium for age. Older, blooming plants will be more established in their pots and may be a couple of years old. This says that the media is declining and will need to be replaced soon. Most of the time I re-pot into my own media and put it into the pot of my liking. Often getting rid of that old media gets rid of the weeds, snails, and all bugs and eggs hiding in the media.

With orchid pests, we should always keep our guard up. You never know where or from whom your next pest may come from. It could be as simple as getting some Hono Hono keikis from a neighbor, buying a plant from a garage sale, ordering online, or even at an orchid show, you never know where your next major orchid pest will come from.

Aloha,

Scot