

AXOR Montreux

Surfaces: **Stainless Steel Optic** Article Number: **16582801**



Description

product features

- swivel range 360°
- laminar spray and shower spray
- lockable shower spray, spray returns through pressing spray diverter
- flow rate 6.7 l/min
- ceramic cartridge
- connection type: G 3/8 compression
- integrated non-return valve
- suitable for continuous flow water heaters

Technology



Product image

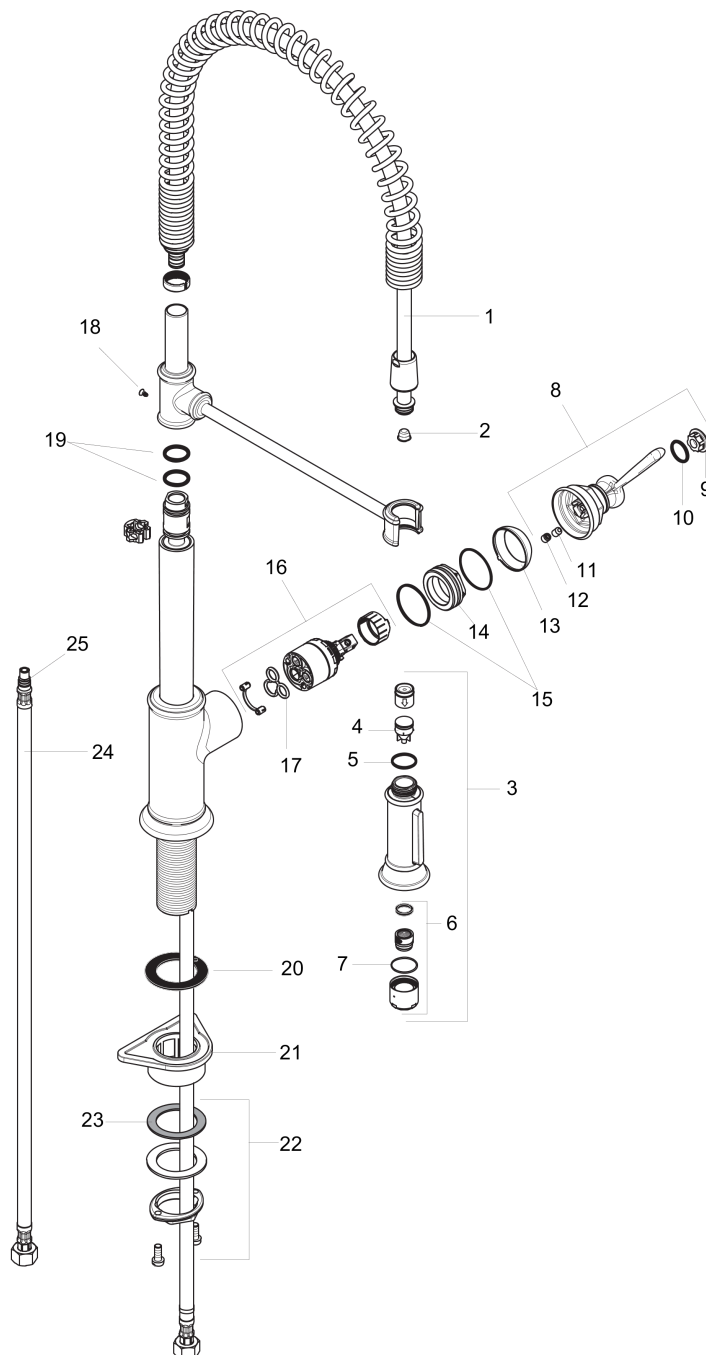


AXOR Montreux
Surfaces: **Stainless Steel Optic** Article Number: **16582801**



Exploded Drawing

Year of production: >01/18



AXOR Montreux

Surfaces: **Stainless Steel Optic** Article Number: **16582801**



Spare part list

Year of production: >01/18

Pos.	Description	Article Number	PC	PU
1	shower hose	97475000	0	1
2	filter	97735000	0	1
3	handspray	92967801	0	1
4	set of non return valves DW 15	97350000	0	1
5	O-ring 18x1,5	98231000	0	1
6	aerator laminar M22x1 (15 l/min)	95909000	0	1
7	O-ring 20x1	98140000	0	1
8	handle	92963800	0	1
9	cover cap	92964000	0	1
10	O-ring 16x2	98133000	0	1
11	hollow set screw M6x8	98444000	0	1
12	screw cover	96762000	0	1
13	flange	92965800	0	1
14	nut	92966000	0	1
15	O-ring 33x1,5	98164000	0	1
16	cartridge, assy	92730000	0	1
17	seal	95008000	0	1
18	screw	97662000	0	1
19	O-ring 17x2,5	98387000	0	1
20	sealing washer	97825000	0	1
21	support	97523000	0	1
22	fixing set (Ø 34)	95049000	0	1
23	lever collar	97548000	0	1
24	connection hose 35½" M8x0,75 3/8"	96316001	0	1
25	O-ring 7x1,5	98422000	0	1
a	non return valve	93218000	0	1