



# Grinnell

Worldwide  
Contacts

www.grinnell.com

## Grinnell Mechanical Products Figure 61 Flange Adapter For Joining Copper Tubing (CTS)

### General Description

The Figure 61 Flange Adapter allows a direct transition from flanged components to Grinnell grooved copper components. Flange bolt patterns conform to ANSI Class 125 and 150 standards.

#### NOTICE

*The Figure 61 Flange Adapter described herein must be installed and maintained in compliance with this document, in addition to the standards of any other authorities having jurisdiction. Failure to do so may impair the performance of this device.*

*The owner is responsible for maintaining their system and devices in proper operating condition. Contact the installing contractor or product manufacturer with any questions.*

### Technical Data

#### Sizes

2 inch to 6 inch (DN50 to DN150)

#### Approvals

UL and ULC Listed  
IAPMO UPC Certified  
Certified to all requirements of  
NSF/ANSI 61

#### Housing

Ductile iron conforming to ASTM A-536, Grade 65-45-12

#### Protective Coatings

Copper Acrylic Enamel

#### Gasket

(specify when ordering)

Grade "EN" EPDM NSF 61 approved compound, copper color code, for cold +86°F (+30°C) and hot +180°F (+82°C) potable water. Not recommended for petroleum service.

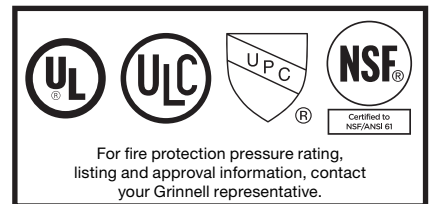
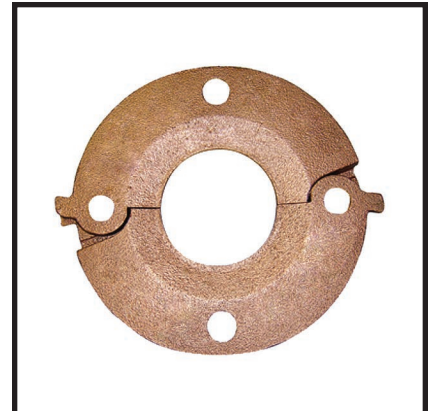
### Installation

GRINNELL Figure 61 Flange Adapters must be installed in accordance with the installation instructions provided in Technical Data Sheet G903.

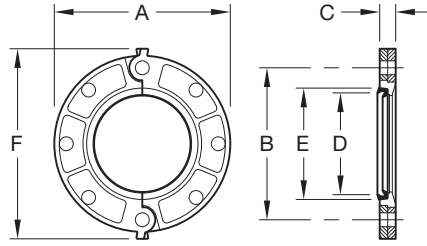
### Ordering Procedure

Grinnell Mechanical Products, are available through a network of distribution centers. For the nearest distributor, visit [www.grinnell.com](http://www.grinnell.com).

When placing an order, indicate the full product name. Please specify the quantity, figure number, type of gasket, Grade "EN" EPDM, and size.



For warranty terms and conditions, visit [www.grinnell.com](http://www.grinnell.com)



Copper Tube Size		Nominal Dimensions Inches mm						Bolts <sup>b</sup>		Approx. Weight Lbs. kg
Nominal ANSI Inches DN	O.D. Inches mm	A	B	C	D <sup>a</sup>	E <sup>a</sup>	F	Qty.	Size Inches	
2 50	2.125 54,0	6.38 162,1	4.75 120,7	0.75 19,1	2.13 54,0	3.41 86,6	7.25 184,2	4	5/8 x 3	4.1 1,9
2-1/2 65	2.625 66,7	7.00 178,0	5.50 140,0	0.88 22,0	2.63 67,0	3.91 99,0	7.88 200,0	4	5/8 x 3	5.7 2,6
3 80	3.125 79,4	7.50 190,5	6.00 152,4	0.94 23,9	3.13 80,0	4.53 115,1	9.88 251,0	4	5/8 x 3	6.7 3,0
4 100	4.125 104,8	9.00 228,6	7.70 190,5	0.94 23,9	4.13 105,0	5.53 140,5	9.90 251,5	8	5/8 x 3	8.5 3,9
5 125	5.125 130,7	10.00 254,0	8.50 215,9	1.00 25,4	5.13 130,0	6.72 170,7	11.38 289,1	8	3/4 x 3-1/2	10.3 4,7
6 150	6.125 155,6	11.00 279,4	9.50 241,3	1.00 25,4	6.13 156,0	7.78 197,6	11.88 301,8	8	3/4 x 3-1/2	11.5 5,2

a. Dimensions D and E represent minimum and maximum sealing surfaces.

b. Bolts are not supplied. Bolt lengths shown are standard; it is the responsibility of the purchaser to verify correct length for the intended application.

**Note:**

Phenolic Type "F" flange washer adapters are required when the Figure 61 Flange Adapter is used against surfaces such as:

- Rubber surfaces
- Adapting to AWWA cast flanges
- Rubber faced wafer valves
- Serrated flange surfaces

Figure 61 Flange Adapters are not recommended for applications that incorporate tie rods for anchoring or on a standard fitting within 90° of each other.

**FIGURE 1  
FIGURE 61 FLANGE ADAPTER  
NOMINAL DIMENSIONS**

**Pressure Ratings**

Nominal Copper Tube Size		Type "K" ASTM B-88			Type "L" ASTM B-88			Type "M" ASTM B-88			DWV ASTM B-306		
Nominal ANSI Inches DN	O.D. Inches mm	Wall Thick. Inch. mm	Max. Work. Press. psi kPa	Max. End Load Lbs. kN	Wall Thick. Inch. mm	Max. Work. Press. psi kPa	Max. End Load Lbs. kN	Wall Thick. Inch. mm	Max. Work. Press. psi kPa	Max. End Load Lbs. kN	Wall Thick. Inch. mm	Max. Work. Press. psi kPa	Max. End Load Lbs. kN
2 50	2.125 54,0	0.083 2,1	300 2065	1,065 4,74	0.070 1,8	300 2065	1,065 4,74	0.058 1,5	250 1725	890 3,96	—	—	—
2-1/2 65	2.625 66,7	0.095 2,4	300 2065	1,625 7,23	0.080 2,0	300 2065	1,625 7,23	0.065 1,7	250 1725	1,350 6,01	—	—	—
3 80	3.125 79,4	0.109 2,8	300 2065	2,300 10,23	0.090 2,3	300 2065	2,300 10,23	0.072 1,8	250 1725	1,415 6,30	0.045 1,1	100 690	765 3,40
4 100	4.125 104,8	0.134 3,4	300 2065	4,005 17,82	0.110 2,8	300 2065	4,005 17,82	0.095 2,4	250 1725	3,340 14,86	0.058 1,5	100 690	1,335 5,94
5 125	5.125 130,7	0.160 4,1	300 2065	6,190 27,55	0.125 3,2	300 2065	6,190 27,55	0.109 2,8	200 1375	4,125 18,36	0.072 1,8	100 690	2,060 9,17
6 150	6.125 155,6	0.192 4,9	300 2065	8,840 39,34	0.140 3,6	300 2065	8,840 39,34	0.122 3,1	200 1375	5,890 26,21	0.083 2,1	100 690	2,945 13,10

**TABLE A  
FIGURE 61 FLANGE ADAPTER  
PRESSURE RATINGS**